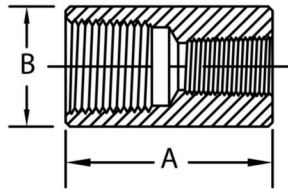
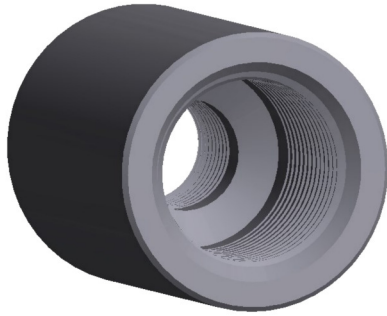


Class 3000 Carbon Forged Steel Threaded Reducing Couplings

ASTM A105, ASME B16.11, ASME B1.20.1



Pipe Size	A	B	Approx. Weight
1/4 X 1/8	1.375	0.750	0.1
3/8 X 1/8			
3/8 X 1/4	1.500	0.875	0.13
1/2 X 1/8	1.875	1.125	0.28
1/2 X 1/4			
1/2 X 3/8	1.875	1.250	0.28
3/4 X 1/8			
3/4 X 1/4			
3/4 X 3/8	2.000	1.375	0.42
3/4 X 1/2			
1 X 1/8			
1 X 1/4			
1 X 3/8	2.375	1.750	0.85
1 X 1/2			
1 X 3/4			
1-1/4 X 1/8			
1-1/4 X 1/4			
1-1/4 X 3/8			
1-1/4 X 1/2	2.625	2.250	1.50
1-1/4 X 3/4			
1-1/4 X 1			
1-1/2 X 1/8			
1-1/2 X 1/4			
1-1/2 X 3/8			
1-1/2 X 1/2	3.125	2.500	2.19
1-1/2 X 3/4			
1-1/2 X 1			
1-1/2 X 1-1/4			
2 X 1/8			
2 X 1/4			
2 X 3/8			
2 X 1/2	3.375	3.000	3.02
2 X 3/4			
2 X 1			
2 X 1-1/4			
2 X 1-1/2			
2-1/2 X 1/8			
2-1/2 X 1/4			
2-1/2 X 3/8			
2-1/2 X 1/2	3.625	3.625	4.56
2-1/2 X 3/4			
2-1/2 X 1			
2-1/2 X 1-1/4			
2-1/2 X 1-1/2			
2-1/2 X 2			
3 X 1/8			
3 X 1/4			
3 X 3/8			
3 X 1/2			
3 X 3/4			
3 X 1	4.250	4.250	6.79
3 X 1-1/4			
3 X 1-1/2			
3 X 2			
3 X 2-1/2			
4 X 1/8			
4 X 1/4			
4 X 3/8			
4 X 1/2			
4 X 3/4			
4 X 1			
4 X 1-1/4	4.750	5.500	12.00
4 X 1-1/2			
4 X 2			
4 X 2-1/2			
4 X 3			
4 X 3-1/2			