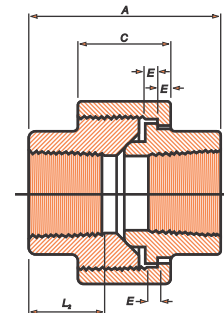
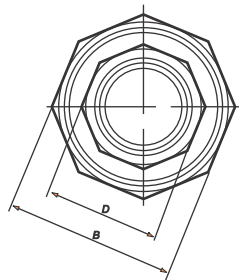


SOCKET - WELDING FITTINGS - DIMENSIONS OF UNIONS BS-3799 1974

Nominal Size		S	A	B	C	d	E	F	G
		3000							
Depth of Socket (min.) S		Distance between bottoms of sockets (min.) A	Bore diameter of sockets (min.) B	Socket wall thickness (min.) C	Bore diameter of union d*	Thickness of shoulder (min.) E	Width A/F of nut (min.) F	Height of nut (min.) G	
in	mm	mm	mm	mm	mm	mm	mm	mm	mm
1/8	(6)	10	17	10.7	3.2	6.8	3.2	32	16
1/4	(8)	10	17	14.1	3.3	9.2	3.2	32	18
3/8	(10)	10	17	17.6	3.5	12.5	3.2	36	19
1/2	(15)	10	18	21.8	4.1	15.5	4.0	41	21
3/4	(20)	13	20	27.4	4.3	21.0	4.8	50	24
1	(25)	13	26	34.1	5.0	26.5	4.8	60	25
1 1/4	(32)	13	28	42.9	5.3	35.0	5.6	70	29
1 1/2	(40)	13	30	49.0	5.6	40.5	5.6	78	30
2	(50)	16	36	61.0	6.1	52.0	6.4	95	37
2 1/2	(65)	16	57	73.8	7.7	62.0	9.6	125	48
3	(80)	16	70	89.7	8.3	78.0	12.7	140	51

*Bore diameter d corresponds to schedule 40 pipe. Subject to tolerances see 2.6.

*Outside diameter of pipe must be specified if dimensions are not in accordance with BS 1600.



SCREWED FITTINGS DIMENSIONS OF UNIONS BS-3799 1974

Material Size		A	B	C	D	E
		3000				
End to End		Width A/F taken nut (min.) B	Height of union nut (min.) C	Width A/F of ends (min.) D	Thickness of Shoulder (min.) E	Length of thread (min.) L1
in	mm	mm	mm	mm	mm	mm
1/8	(6)	40	32	16	17	6.70
1/4	(8)	43	32	18	19	10.21
3/8	(10)	48	36	19	22	10.36
1/2	(15)	51	43	21	30	13.56
3/4	(20)	57	50	24	36	13.86
1	(25)	64	60	25	41	17.34
1 1/4	(32)	70	70	29	50	17.93
1 1/2	(40)	79	78	30	60	18.38
2	(50)	89	95	37	70	19.22
2 1/2	(65)	118	125	48	85	28.89
3	(80)	121	140	51	100	30.48