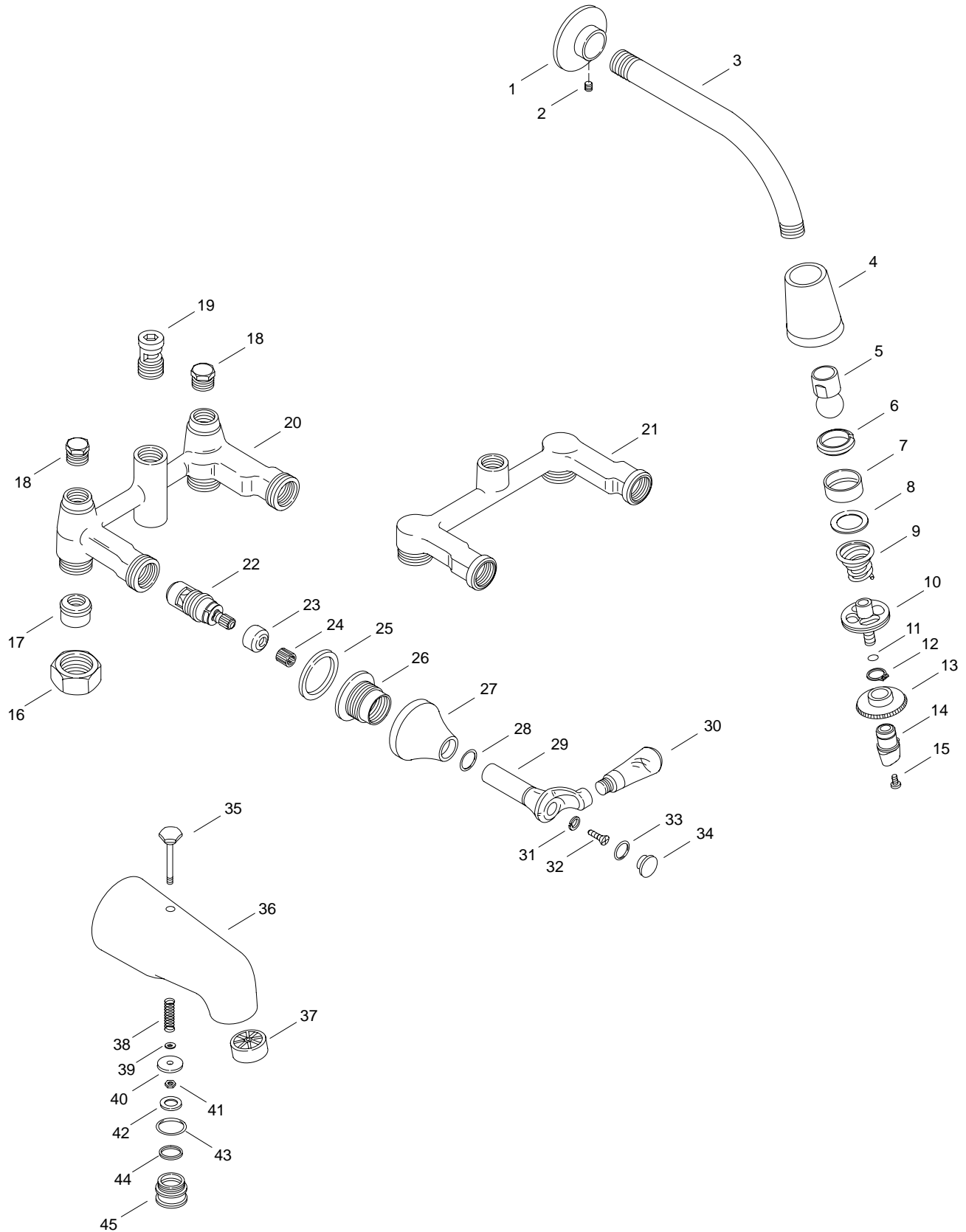


KOHLER[®] SERVICE PARTS

FLAIR II™
BATH AND SHOWER FAUCETS
K-7004-8A-**-AA, K-7004-8A-**-BA
K-7226-8A-**-AA, K-7226-8A-**-BA



Variation and/or finish/color code may be required when ordering.

SERVICE PARTS

ITEM NO.	PART NO.	DESCRIPTION
1	22911	Flange For Shower Arm
2	32966	Screw, 8-32 NC-2A x .188
3	24898	Shower Arm
4	29466	Showerhead Body
5	57346	Ball Joint Assembly
6	52843	Split Washer
7	24981	Packing for Showerhead
8	29266	Washer, 57/64" x 1-11/64"
9	24960	Spring for Showerhead
10	29506	Lock Ring Assembly
11	32698	O-Ring
12	29470	Retaining Ring
13	58001	Face, Showerhead
14	29479	Thumb Nut, Showerface
15	29476	Screw, 6-32 NC-2A x .313
16	24003	Nut, 1.25-14 NS-2B
17	24015	Union Joint
18	34191	Plug, 1/2 IPS
19	20421	Aspirator
20	40413	Yoke Assembly (K-7004)
21	21617	Yoke Assembly (K-7226)
22	30430	Ceramic Valve (Clockwise Close)
	30431	Ceramic Valve (Counterclockwise Close)
23	46115	Stabilizer
24	59027	Spline Adapter
25	50371	Gasket
26	50340	Escutcheon
27	50346	Bonnet
28	38820	O-Ring
29	50348	Lever
30	50349	Insert, Handle, Plastic
31	37793	Washer, Lock #8
32	61439	Screw, .164-32 UNC x 1.5
33	33993	O-Ring
34	50351	Plug Button
35	20536	Lift Rod
36	38777	Diverter Spout
37	38808	Bath Stream Breaker
38	20494	Spring
39	51176	Washer
40	59347	Seal Plate, Diverter
41	41491	Nut, 10-24 NC-2B
42	51290	Gasket
43	38676	O-Ring, -024 x 1.114
44	38677	Gasket, 1.138 ID x 1.245 OD
45	38711	Cap For Diecast Diverter Spout

SERVICE KITS

PART NO.	ITEM NO.	QTY.	DESCRIPTION
20345			Escutcheon with Screw
	1	1 ea.	Flange For Shower Arm
	2	1 ea.	Screw, 8-32 NC-2A x .188
20350			Shower Arm Assembly
	1	1 ea.	Flange For Shower Arm
	2	1 ea.	Screw, 8-32 NC-2A x .188
	3	1 ea.	Shower Arm
58307			Showerhead Assembly
	4	1 ea.	Showerhead Body
	5	1 ea.	Ball Joint Assembly
	6	1 ea.	Split Washer
	7	1 ea.	Packing for Showerhead
	8	1 ea.	Washer, 57/64" x 1-11/64"
	9	1 ea.	Spring for Showerhead
	10	1 ea.	Lock Ring Assembly
	11	1 ea.	O-Ring
	12	1 ea.	Retaining Ring
	13	1 ea.	Face, Showerhead
	14	1 ea.	Thumb Nut, Showerface
	15	1 ea.	Screw, 6-32 NC-2A x .313
58330			Shower Face Subassembly
	12	1 ea.	Retaining Ring
	13	1 ea.	Face, Showerhead
	14	1 ea.	Thumb Nut, Showerface
50595			Handle Assembly
	24	1 ea.	Spline Adapter
	25	1 ea.	Gasket
	26	1 ea.	Escutcheon
	27	1 ea.	Bonnet
	28	1 ea.	O-Ring
	29	1 ea.	Lever
	30	1 ea.	Insert, Handle, Plastic
	31	1 ea.	Washer, Lock #8
	32	1 ea.	Screw, .164-32 UNC x 1.5
	33	1 ea.	O-Ring
	34	1 ea.	Plug Button
38776			Diverter Spout Assembly
	35	1 ea.	Lift Rod
	36	1 ea.	Diverter Spout
	37	1 ea.	Bath Stream Breaker
	38	1 ea.	Spring
	39	1 ea.	Washer
	40	1 ea.	Seal Plate, Diverter
	41	1 ea.	Nut, 10-24 NC-2B
	42	1 ea.	Gasket
	43	1 ea.	O-Ring, -024 x 1.114
	44	1 ea.	Gasket, 1.138 ID x 1.245 OD
	45	1 ea.	Cap For Diecast Diverter Spout

Variation and/or finish/color code may be required when ordering.