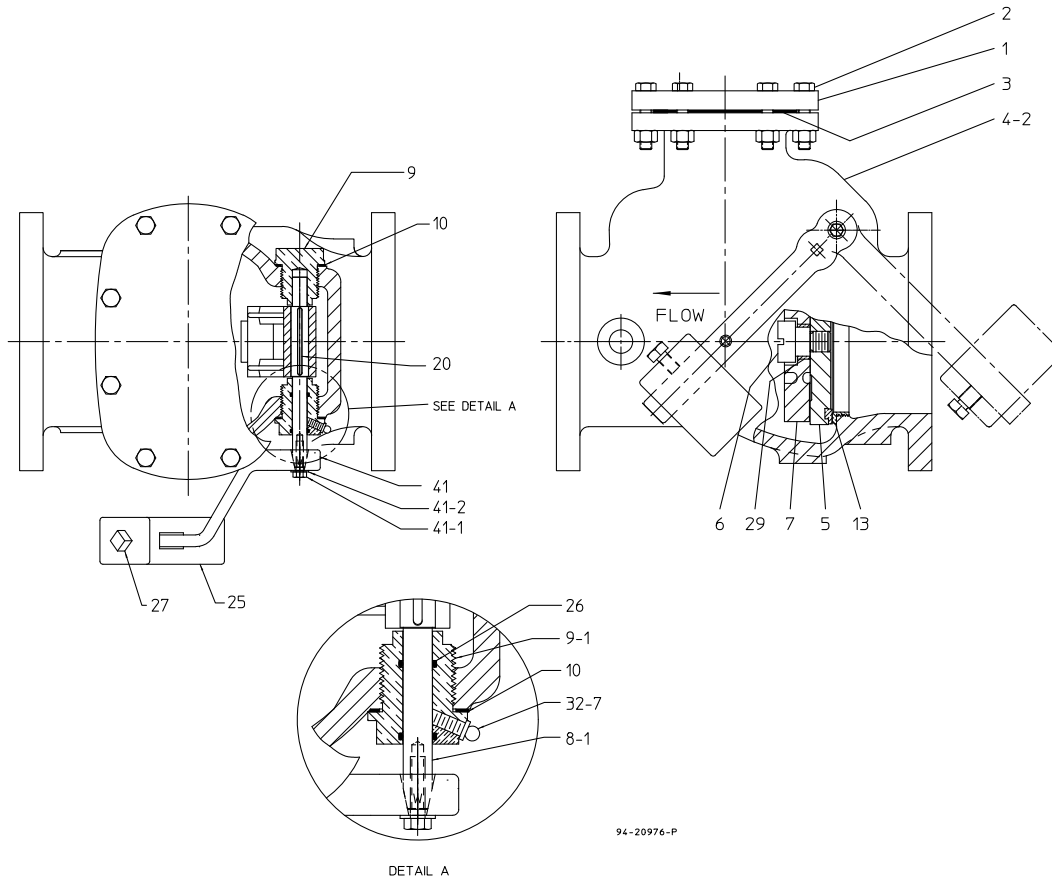


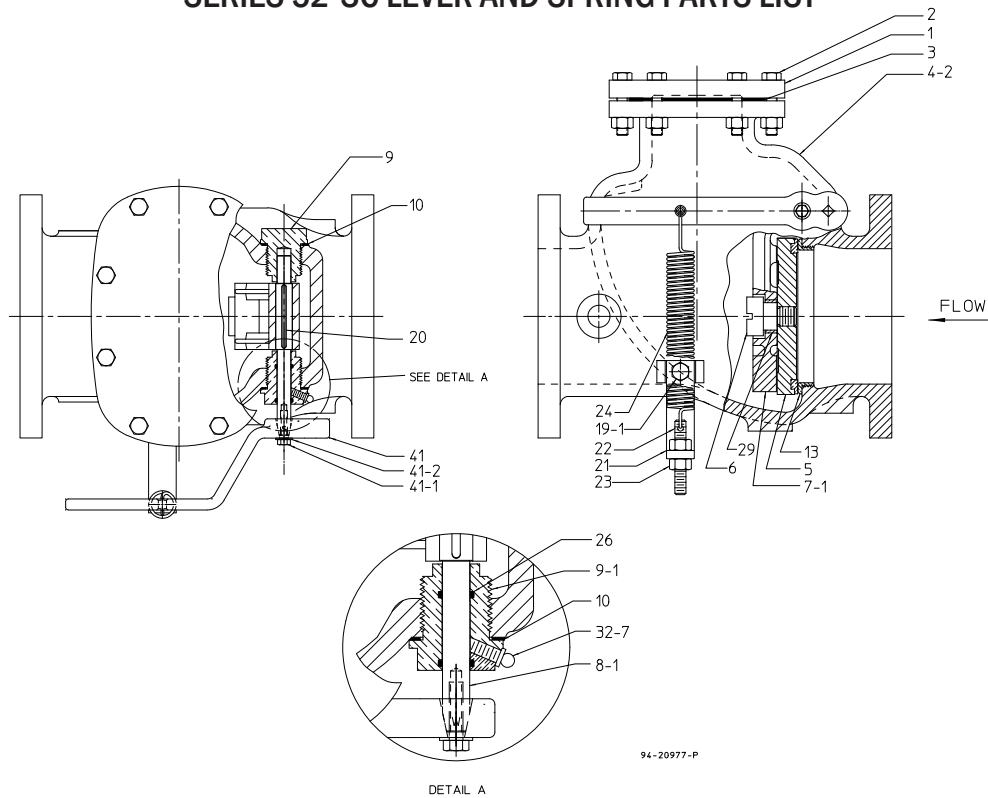
## SERIES 52-SC LEVER AND WEIGHT PARTS LIST



| Ref. No. | Description                | Material                     | Qty.   |
|----------|----------------------------|------------------------------|--------|
| 1        | Bonnet                     | Gray Iron                    | 1      |
| 2        | Bonnet Bolt & Nut          | 0304 Stainless Steel         | Varies |
| 3        | Bonnet Gasket              | Composition Rubber           | 1      |
| 4-2      | Flanged Ends Case          | Gray Iron                    | 1      |
| 5        | Disc                       | (See Note 6)                 | 1      |
| 6        | Disc Stud                  | Bronze                       | 1      |
| 7-1      | Clapper Arm for Lever      | Ductile Iron                 | 1      |
| 8-1      | Clapper Arm Shaft Assembly | Stainless Steel (See Note 5) | 1      |
| 9        | Retainer Plug              | Bronze                       | 1      |
| 9-1      | Retainer Plug for Lever    | Bronze                       | 1      |
| 10       | Retainer Plug Gasket       | Composition Rubber           | 2      |
| 13       | Seat Ring                  | Bronze                       | 1      |
| 20       | Shaft Key                  | Stainless Steel              | 1      |
| 25       | Weight for Lever           | Gray Iron                    | 1      |
| 26       | O-ring                     | Rubber                       | 2      |
| 27       | Weight Set Screw           | Steel                        | 1      |
| 29       | Disc Stud Bushing          | Bronze                       | 1      |
| 32-7     | Grease Fitting             | Steel                        | 1      |
| 41       | Lever                      | Ductile Iron                 | 1      |
| 41-1     | Lever Bolt                 | 0304 Stainless Steel         | 1      |
| 41-2     | Lever Washer               | 0304 Stainless Steel         | 1      |

- Construction, materials and testing comply with ANSI/AWWA C508.
- Bolt patterns of Class 125 flanged ends are in accordance with ANSI/AWWA C110/A21.10 (ASME B16.1 Class 125).
- Valves have manufacturer's name, pressure class and year of manufacture cast on side of case.
- All gray iron is ASTM A126 Class B.
- Clapper Arm shaft is stainless steel. Assembly includes lever, bolt, washer and key.
- Disc on 3 in. is bronze. 4 in. and above are gray iron with bronze face. Disc has lug on O.D. to prevent rotation.
- Lever is furnished on side and position shown unless otherwise specified. Lever shown by dot and dash lines is the position furnished when valve is to be installed in a vertical line with upward flow for lever and weight.

## SERIES 52-SC LEVER AND SPRING PARTS LIST



94-20977-P

| Ref. No. | Description                | Material                     | Qty.   |
|----------|----------------------------|------------------------------|--------|
| 1        | Bonnet                     | Gray Iron                    | 1      |
| 2        | Bonnet Bolt & Nut          | 0304 Stainless Steel         | Varies |
| 3        | Bonnet Gasket              | Composition Rubber           | 1      |
| 4-2      | Flanged Ends Case          | Gray Iron                    | 1      |
| 5        | Disc                       | (See Note 6)                 | 1      |
| 6        | Disc Stud                  | Bronze                       | 1      |
| 7-1      | Clapper Arm for Lever      | Ductile Iron                 | 1      |
| 8-1      | Clapper Arm Shaft Assembly | Stainless Steel (See Note 5) | 1      |
| 9        | Retainer Plug              | Bronze                       | 1      |
| 9-1      | Retainer Plug for Lever    | Bronze                       | 1      |
| 10       | Retainer Plug Gasket       | Composition Rubber           | 2      |
| 13       | Seat Ring                  | Bronze                       | 1      |
| 19-1     | Bracket Cap Screw          | Steel                        | 1      |
| 20       | Shaft Key                  | Stainless Steel              | 1      |
| 21       | Spring Bracket             | Steel                        | 1      |
| 22       | Spring Link                | Plated Steel                 | 1      |
| 23       | Link Nut                   | Plated Steel                 | 2      |
| 24       | Spring for Lever           | Steel                        | 1      |
| 26       | O-ring                     | Rubber                       | 2      |
| 29       | Disc Stud Bushing          | Bronze                       | 1      |
| 32-7     | Grease Fitting             | Steel                        | 1      |
| 41       | Lever                      | Ductile Iron                 | 1      |
| 41-1     | Lever Bolt                 | 0304 Stainless Steel         | 1      |
| 41-2     | Lever Washer               | 0304 Stainless Steel         | 1      |

- Construction, materials and testing comply with ANSI/AWWA C508.
- Bolt patterns of Class 125 flanged ends are in accordance with ANSI/AWWA C110/A21.10 (ASME B16.1 Class 125).
- Valves have manufacturer's name, pressure class and year of manufacture cast on side of case.
- All gray iron is ASTM A126 Class B.
- Clapper Arm shaft is stainless steel. Assembly includes lever, bolt, washer and key.
- Disc on 3 in. is bronze. 4 in. and above are gray iron with bronze face. Disc has lug on O.D. to prevent rotation.
- Lever is furnished on side and position shown unless otherwise specified.