

6042HWP – EVERYDAY BATHS

60 x 42 x 17 inches

SOAKER MODEL #6042H

WHIRLPOOL MODEL #6042HWP



AQUATIC ADVANTAGE

- National distribution
- 6 manufacturing facilities
- Private fleet
- Centralized customer service
- Field support

COLOR OPTIONS

Stock	Upgraded	Premium
Almond (C) White (C)	Linen/Biscuit (C) Bone (C)	Black (NA) Mexican Sand (NA) Sand Bar (NA) Sterling Silver (NA)

C = color matched trim

NA = not applicable

* color not available for whirlpool models

FEATURES

- Alcove bath
- Integral arm rest
- Ergonomic back rest
- Integral tiling flange (3T)
- Integral skirt
- Slip-resistant textured bottom
- Left or right hand drain
- AcrylX™ applied acrylic surface
- Lifetime limited warranty

Whirlpool Features:

- 6 directional hydrotherapy jets
- Color matched or clear trim
- 2 air controls
- Pneumatic on/off control
- Advanced safety suction system

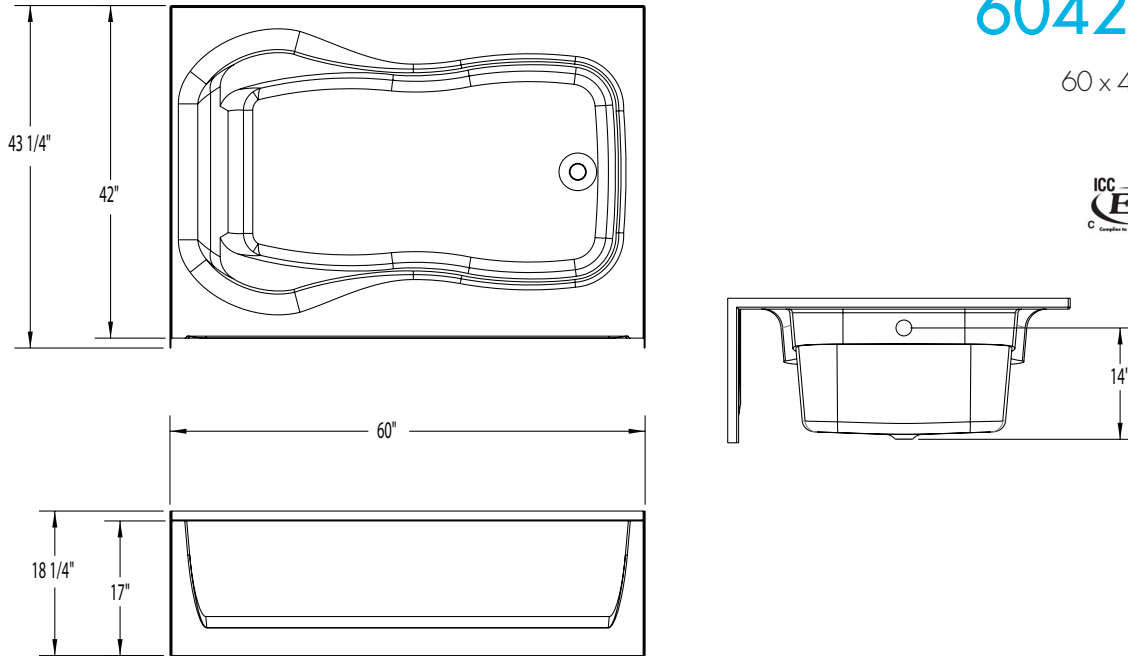
OPTIONS

- Removable access panel (whirlpool models)
- Designer drain, waste & overflow



6042HWP

60 x 42 x 17 inches



FEATURES lbs Dimensional Tolerance $\pm \frac{3}{16}$ ". Dimensions needed for site preparation should be measured from the unit. Aquatic assumes no responsibility for preparatory work.

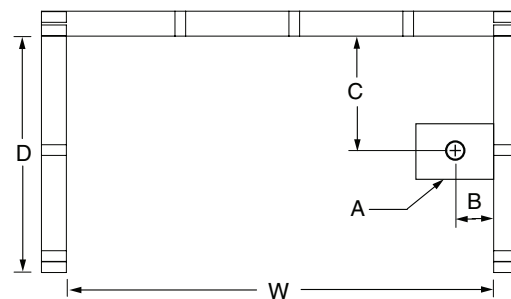
Model #	Material	Jets	Motor	Controls	Drain	Net Wt.	Pkg. Wt.
Soaker #6042H	AcrylX™	0	-	-	LH or RH	74	79
Whirlpool #6042HWP	AcrylX™	6	63 GPM	Pneumatic	LH or RH	134	139

DIMENSIONS

Specifications	inches
Width: Overall / Net	60
Depth: Overall / Net	43 1/4 / 42
Height: Overall / Net	18 1/4 / 17
Enclosure Opening	-
Skirt Height	17
Drain Rough-In (from Back Wall)	21
Drain Rough-In (from Side Wall)	2 1/4
Drain: Diameter / Clearance	2 / 3/8

FRAMING DIMENSIONS inches

Type	D Depth	W Width	H Height	A	B	C
Alcove	43 1/4	60 1/8	18 1/4	Box Out	2 1/4	21



SUMP DATA

Top of Drain to Bottom of Overflow	Capacity to Overflow gal	Min. Operating Capacity gal	WIDTH @ centerline		DEPTH @ centerline	
			Top	Bottom	Top	Bottom
12 5/8	65	50	54	44	26	23