

# INSTALLATION PROCEDURE

## FORDFLEX REPAIR CLAMP STYLES F1, F2 AND LARGER

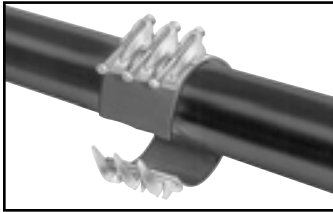
The successful application of a repair clamp rests heavily on the installer. We suggest the following guidelines be adopted as routine practice.

**CHECK THE DIAMETER OF THE PIPE TO MAKE CERTAIN YOU ARE USING THE CORRECT SIZE CLAMP**

**PREPARATIONS:**

1. Scrape the pipe to remove as much dirt and corrosion as possible so the surface is smooth.
2. Make certain the gasket is free of foreign matter and that nothing becomes lodged between the gasket and the pipe. Lubricate the pipe and/or gasket with soapy water or any other acceptable lubricant to achieve maximum results.
3. Use proper tools, avoid loose fitting wrenches and wrenches too short to achieve the proper torque of the nuts. A torque wrench is recommended.

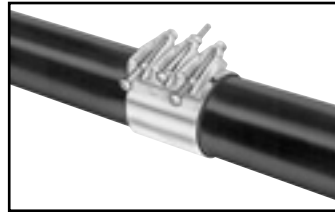
### Installing an F1 Repair Clamp



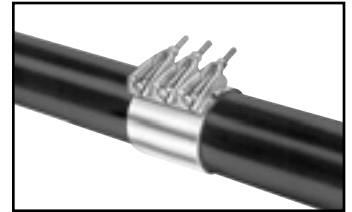
Back off nuts to end of bolts, but DO NOT remove them. Separate clamp and position on the pipe with the bolt lug section on top.



Hook the middle bolt into the receiver lug and tighten the nut until the bolt is secure.



ROTATE THE CLAMP in the direction of the arrow approximately 1/4 turn to ensure correct gasket positioning.



Squeeze the two lug sections together. Tighten the bolts evenly with incremental torque settings, up to the recommended torque.

**PRECAUTIONS:**

1. Repair clamps are not designed for pipe restraint. Make sure proper restraint is applied when required.
2. ALWAYS RECHECK TORQUE AND PRESSURE TEST FOR LEAKS BEFORE BACKFILLING.
3. Backfill and compact carefully around the clamp according to the pipe manufacturer's instructions.
4. Tighten all sections of a multi-section clamp evenly and equally to the recommended torque.

**RECOMMENDED TORQUE**

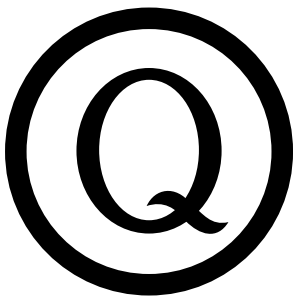
Clamp Top Range	Bolt Diameter	Approx. Torque
Thru 5.62"	5/8"	30 / 35 ft. lbs.
6.35" & Above	5/8"	75 ft. lbs.



The Ford Meter Box Co., Inc. 775 Manchester Avenue, P.O. Box 443, Wabash, Indiana, USA 46992-0443  
 Telephone: 260-563-3171 FAX: 800-826-3487 Overseas FAX: 260-563-0167 <http://www.fordmeterbox.com>

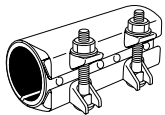
FORM # 91702-99

04/04

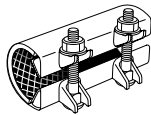


Quality Circle

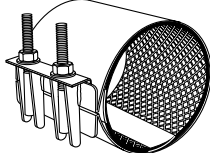
The assures you that the Ford Repair Clamp is manufactured to the highest standard of excellence.



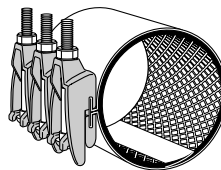
**Wrap Clamp**  
Full Wrap Gasket



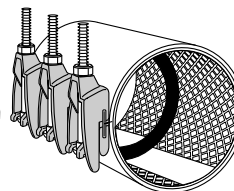
**Snap Clamp**  
Economical Water Pipe Repair



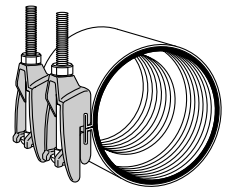
**FS1**  
All Stainless Steel



**F1**  
Removable Ductile Iron Lugs



**FIBC**  
Repair of Integral Bell Solvent PVC



**FCC**  
Repair of Solvent Weld PVC Coupling



The Ford Meter Box Co., Inc. 775 Manchester Avenue, P.O. Box 443, Wabash, Indiana, USA 46992-0443  
 Telephone: 260-563-3171 FAX: 800-826-3487 Overseas FAX: 260-563-0167 <http://www.fordmeterbox.com>

FORM # 91702-99

04/04