

For Residential and Commercial Applications

Job Name		Engineer / Architect	
Job Location		Wholesaler	
Submittal Date		Contractor	

SJ300 Series Faucet Shank Nut

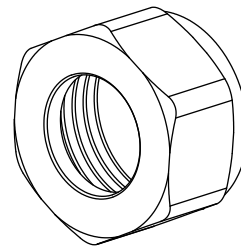
Use: To connect faucet water supply risers to faucet shank.

Design Features:

- Brass material

Operating Specifications:

Temperature: 32° - 124° F



MATERIAL SPECIFICATIONS

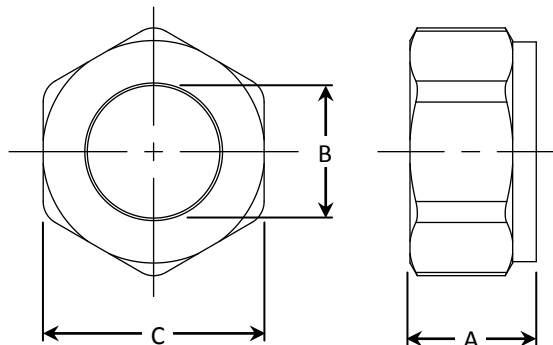
Faucet Nut	Brass or brass, chrome plated
-------------------	-------------------------------

Part Listing:

<input type="checkbox"/>	SJ300 C	Faucet shank nut, chrome
<input type="checkbox"/>	SJ300 CB	Faucet shank nut, chrome
<input type="checkbox"/>	SJ300 R	Faucet shank nut, rough brass
<input type="checkbox"/>	SJ300 RB	Faucet shank nut, rough brass, bulk

PART DIMENSIONS (Inches)

Model	Straight Thread	DIM. A	DIA. B	HEX. C
SJ300	1/2-14 NPSM	.50	.520	7/8



This specification and all information contained herein is the confidential and exclusive property of BrassCraft Manufacturing, and shall not be disclosed to others without the written consent of BrassCraft Mfg. This specification must be returned to BrassCraft Mfg. if requested.

400.156 SJ300 Faucet Shank Nut REV 08/14

BrassCraft®

© 2014 BrassCraft Mfg.