

For Residential and Commercial Applications

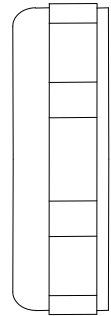
Job Name		Engineer / Architect	
Job Location		Wholesaler	
Submittal Date		Contractor	

90/ 96/ 97 Series Compression Slip Nuts

Use: Tubular drainage connector nut for use with waste drainage systems

Design Features:

- **Extruded one-piece nut.** Eliminates potential for pin holes and porosity
- **Clean, uniform threads** insure positive threaded connections and reduces potential for cross-threading
- **Smooth finish** simplifies assembly without burrs or rough surfaces to catch or hang up during installation

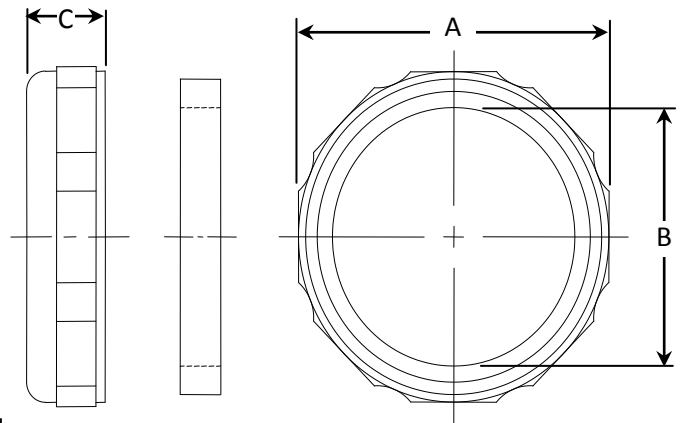


Operating Specifications:

Temperature: 40° to 140°F

MATERIAL SPECIFICATIONS	
Nut	Zinc die cast
Rubber Washer	Nitrile rubber

PART DIMENSIONS (Inches)			
Model	OCT. A	DIA. B	DIM. C
90A	1.75	1.29	.50
90B / 90BR	1.75	1.29	.50
96A	2.00	1.54	.50
96B / 96BR	2.00	1.54	.50
97B	2.00	1.29	.50



Part Listing:

- 90A 1-1/4" O.D. x 1-1/4" F.I.P., rough finish
- 90B 1-1/4" O.D. x 1-1/4" F.I.P., chrome plated
- 90BR 1-1/4" O.D. x 1-1/4" F.I.P., w/ rubber washer, chrome plated
- 96A 1-1/2" O.D. x 1-1/2" F.I.P., rough finish
- 96A B 1-1/2" O.D. x 1-1/2" F.I.P., rough finish, bulk
- 96B 1-1/2" O.D. x 1-1/2" F.I.P., chrome plated
- 96BR 1-1/2" O.D. x 1-1/2" F.I.P., w/ rubber washer, chrome plated
- 97B 1-1/4" O.D. x 1-1/2" F.I.P., chrome plated

This specification and all information contained herein is the confidential and exclusive property of BrassCraft Manufacturing, and shall not be disclosed to others without the written consent of BrassCraft. This specification must be returned to BrassCraft if requested.

