

EP ProPEX Coupling

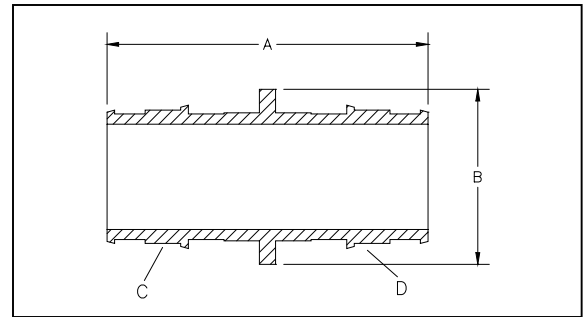
Submittal Information
Component

Project Information

Job Name: _____	Part No. Ordered: _____
Location: _____	Quantity Ordered: _____
_____	P.O. Number: _____
Engineer: _____	Date Submitted: _____
Contractor: _____	Submitted By: _____
Mfg Rep: _____	Approved By: _____

Technical Data

Material.....UDEL[®] Polysulfone, 20% glass reinforced
Max Temp (no pressure).....320°F
Max Use Temp/Pressure.....210°F @ 150 psi



Product Information and Application Use

The EP ProPEX couplings are available for use in hot and cold domestic potable water systems. Fittings are also approved for use in any hydronic heating systems. Each end of the coupling is manufactured with the Wirsbo ProPEX fitting for connections to hePEX plus or AQUAPEX tubing.

Ordering Information

Dimensional Information

✓ Description	Part Number	A	B	C	D	E	Weight
[] EP ProPEX Coupling, 3/8" PEX x 3/8" PEX	Q4543838	1.31"	0.75"	3/8"	3/8"	N/A	0.02 lbs
[] EP ProPEX Coupling, 3/8" PEX x 1/2" PEX	Q4543850	1.43"	0.84"	3/8"	1/2"	N/A	0.02 lbs
[] EP ProPEX Coupling, 1/2" PEX x 1/2" PEX	Q4545050	1.54"	0.84"	1/2"	1/2"	N/A	0.03 lbs
[] EP ProPEX Coupling, 1/2" PEX x 3/4" PEX	Q4545075	1.78"	1.19"	1/2"	3/4"	N/A	0.04 lbs
[] EP ProPEX Coupling, 3/4" PEX x 3/4" PEX	Q4547575	2.00"	1.19"	3/4"	3/4"	N/A	0.06 lbs
[] EP ProPEX Coupling, 3/4" PEX x 1" PEX	Q4547510	2.25"	1.35"	3/4"	1"	N/A	0.10 lbs
[] EP ProPEX Coupling, 1" PEX x 1" PEX	Q4541010	2.50"	1.35"	1"	1"	N/A	0.13 lbs

Code Approvals/Standards

ANSI/NSF 14 and 61 certified
ASTM F 877
ASTM F 1960
CAN/CSA B137.5
ICBO ER 5142
IPC
UPC
NSPC
SBCCI (PST and ESI Report No. 9661)

Installation

- Use the appropriate PEX ring for the tubing being connected.
- Refer to the Wirsbo AQUAPEX Installation Handbook for additional information.

Related Applications

AQUAPEX — Hot and Cold Potable Water Distribution
Wirsbo Radiant Floor Heating Systems
Wirsbo Snow & Ice Melting Systems

