



HOW TO SOLVENT WELD WITH SOLVENT CEMENTS

How To Solvent Weld

Prior to Use:

Read all product labels carefully.

Stir or shake cement before using. If gelled, do not use. Keep container closed when not in use. Avoid eye and skin contact. Wear safety glasses with side shields and wear rubber gloves.

1. Cut pipe ends square, Deburr the inside and Chamfer the outside of pipe ends, remove all dirt from pipe ends and fitting hubs.

2. Interference fit between pipe and fitting hub must be completed prior to primer and cement application. Pipe should easily go 1/3 to 2/3 the way into the fitting hub.

3. Choose suitable application at least 1/2 the size of the pipe diameter. For larger pipe diameters, use a natural bristle brush or roller.

4. Clean pipe and fitting hub with a listed cleaner.

5. First apply primer inside the fitting hub, then the exterior of pipe end and once again the fitting hub.

- Once the primer has been applied to both surfaces, the cement must be applied within 5 minutes. If not, you MUST prime the surfaces again before applying cement.

- Do Not use primer on ABS pipe and fittings.

6. First apply liberal coat of cement to exterior of the pipe end beyond fitting hub depth, then inside the fitting hub and once again to the outside of the pipe end.

- Remember that a thin coating of cement is recommended inside the fitting hub to prevent puddling. Puddling can cause weakening and lead to joint failure.

- Assembly parts QUICKLY. Cement must be fluid. Dried cement CANNOT be re-coated.

7. Turn pipe 1/4 of turn as you push the pipe end into the fitting hub.

8. Make sure pipe end bottoms out inside the fitting hub and hold for 30 seconds to prevent push-out. Wipe off excess cement

- Lower temperatures and larger diameter pipes may need a little extra hold time
- Allow 15 minutes for good handling strength and 2 hours cure time at temperatures above 60°F before pressure testing up to 180 psi. Longer cure times may be required at temperatures below 60°F or with pipe above 3". DO NOT TEST WITH COMPRESSED AIR OR GAS.

Pipe Types

CPVC: Chlorinated Poly Vinyl Chloride

Typically used for pressure piping applications, including hot and cold potable water distribution. Can also be used for corrosive fluid handling in industrial or chemical applications.

ABS: Acrylonitrile Butadiene Styrene

Typically used for non-pressure piping applications.

PVC: Poly Vinyl Chloride

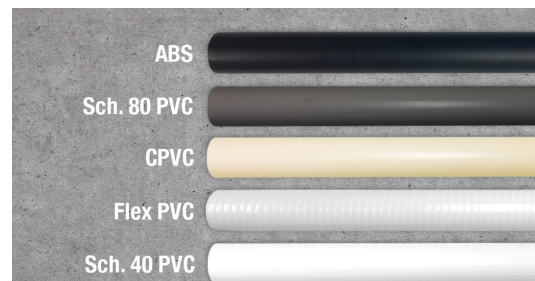
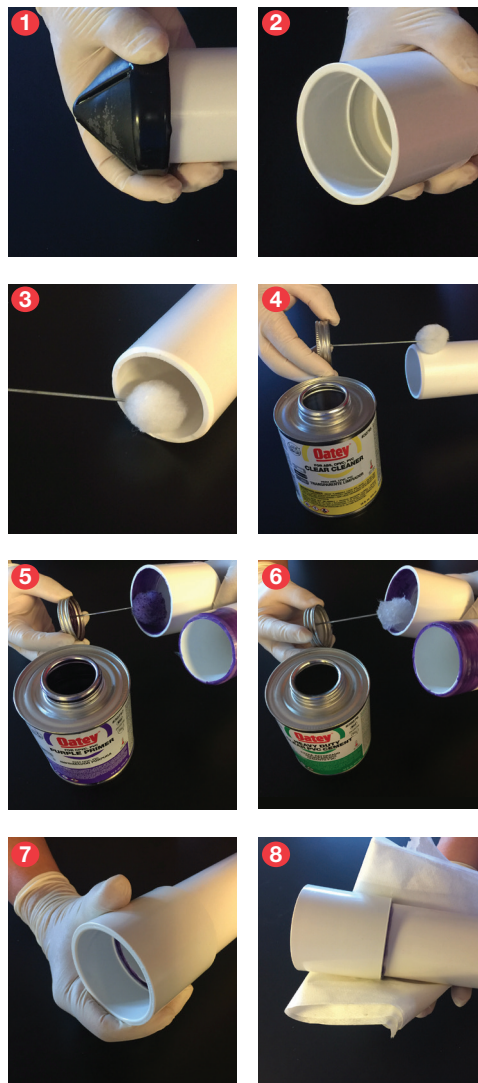
Typically used for pressure or non-pressure piping applications.

Solvent Cements for any Application

If you need to solvent weld one pipe joint or one thousand, Oatey is the solvent cement more professionals choose than any other brand. From hot to cold, wet to dry, Oatey has the solvent cement to meet your exact requirement for any plastic pipe installation.

Product Development

Oatey Solvent Cements are developed with the plumbing contractor in mind. Extensive research and product development provide you peace of mind and confidence when using Oatey brand solvent cements. In addition, no company works as hard as Oatey on behalf of the professional plumber with regulatory and coding agencies.



Set Up & Curing Times

The set up/cure time is dependent on several factors. The pipe size, socket fit, ambient temperature, relative humidity, solvent cement used and the system operating pressure should all be considered when determining set up/cure times.

Average Handling/Set Up Times for PVC/CPVC Solvent Cements

Handling/Set Up Time is the time required prior to handling the joint. In damp or humid weather, allow 50% additional time.

| Pipe Diameter | Temperature during assembly | | | |
|---------------|-----------------------------|-------------|-------------|------------|
| | 60° to 100°F | 40° to 60°F | 20° to 40°F | 0° to 20°F |
| ½" to 1¼" | 2 minutes | 5 minutes | 8 minutes | 10 minutes |
| 1½" to 3" | 5 minutes | 10 minutes | 12 minutes | 15 minutes |
| 4" to 5" | 15 minutes | 30 minutes | 1 hour | 2 hours |
| 6" to 8" | 30 minutes | 90 minutes | 3 hours | 6 hours |

Contact Oatey Technical Services for set up times for pipe larger than 8" diameter.

These figures should only be used as a general guide. Conditions in the field may vary.

Average Number of Joints Per Quart of Solvent Cement

| Pipe Diameter | ½" | ¾" | 1" | 1¼" | 1½" | 2" | 3" | 4" | 6" | 8" |
|------------------|-----|-----|-----|-----|-----|----|----|----|----|----|
| Number of Joints | 325 | 250 | 150 | 125 | 90 | 70 | 50 | 30 | 10 | 8 |

These figures are estimates based on laboratory testing. Conditions in the field may vary.

Average Joint Cure Times for PVC, ABS and CPVC Solvent Cements

| PVC & ABS | | | | | |
|---------------|---------------|---|-------------|-------------|---|
| Pipe Diameter | | Temperature during assembly and cure period | | | |
| | | 60° to 100°F | 40° to 60°F | 20° to 40°F | 0° to 20°F |
| ½" to 1¼" | Up to 180 psi | 15 min | 20 min | 30 min | Please contact Oatey Technical Services for cure time information |
| | 180 psi + | 4 hours | 8 hours | 36 hours | |
| 1½" to 3" | Up to 180 psi | 30 min | 45 min | 60 min | |
| | 180 psi + | 8 hours | 16 hours | 3 days | |
| 4" to 5" | Up to 180 psi | 2 hours | 4 hours | 36 hours | |
| | 180 psi + | 12 hours | 24 hours | 4 days | |
| 6" to 8" | Up to 180 psi | 8 hours | 16 hours | 3 days | |
| | 180 psi + | 24 hours | 48 hours | 9 days | |

| CPVC | | | | | |
|---------------|---------------|---|-------------|---|------------|
| Pipe Diameter | | Temperature during assembly and cure period | | | |
| | | 60° to 100°F | 40° to 60°F | 20° to 40°F | 0° to 20°F |
| ½" to 1¼" | Up to 180 psi | 1 hour | 2 hours | Please contact Oatey Technical Services for cure time information | |
| | 180 psi + | 6 hours | 3 days | | |
| 1½" to 3" | Up to 180 psi | 5 hours | 3 days | | |
| | 180 psi + | 3 days | 1 week | | |
| 4" to 5" | Up to 180 psi | 16 hours | 1 week | | |
| | 180 psi + | 1 week | 3 weeks | | |
| 6" to 8" | Up to 180 psi | 1 week | 2 weeks | | |
| | 180 psi + | 2 weeks | 4 weeks | | |

Contact Oatey Technical Services for cure times for pipe larger than 8" diameter.

This data is applicable only for new piping installations and not recommended for repair or cut-ins on hot and cold water distribution systems. Please contact Oatey Technical Service for recommendations on Cure Times for such applications.

DO NOT test PVC and CPVC piping systems with compressed air or gas.

NOTES: Cure schedule is the time required before pressure testing the system
 - This chart can be used as a guideline to determine joint cure
 - Cure times stated are for conditions with relative humidity of 60% or less
 + In damp or humid weather, allow 50% additional cure time



Oatey Co.
 Cleveland, OH 44135
 800-321-9532
 Oatey.com

©2019 Oatey SCS. All Rights Reserved.

This information is based on data believed to be reliable but Oatey makes no warranties, express or implied, as to its accuracy and assumes no liability arising out of its use. The data listed falls within the normal range of product properties but should not be used to establish specification limits or used alone as the basis of design. Oatey's liability to purchasers is expressly limited to the terms and conditions of sale. Oatey is a trademark of Oatey Co. All other trademarks can be found on Oatey.com. LCS358F WEB 03/20