

INSTALLER'S GUIDE

18-HB60D12-4

ALL phases of this installation must comply with NATIONAL, STATE AND LOCAL CODES.

See Unit Rating nameplate for max output temperature and static pressure range. Installer must check off Heater Installed nameplate on unit per instructions on nameplate

Models:

BAYHTRC106A-
BAYHTRC417A

Used With:

TCH / WCH024-42B/C
TCH / WCH048-60F

SUPPLEMENTARY ELECTRIC HEATERS for OVER / UNDER UNITS

⚠ WARNING: HAZARDOUS VOLTAGE - DISCONNECT POWER BEFORE SERVICING

ELECTRIC HEATER DATA

UNIT MODEL	ELECTRIC HEATER MODEL	RATED VOLTAGE	PHASE	HEATER CAPACITY		NO. OF STAGES	KW / STAGE		MCA (2)	MAX. FUSE OR HQCR CKT BKR SIZE (4)	CANADA ONLY MAX. CKT BKR SIZE (5)
				KW	BTUH		1	2			
WCH/TCH048F1 (6) (7)	BAYHTRC106A	208/240	1	4.33/5.76	14800/19600	1	4.33/5.76	---	26/30(3)	30/30	30/30
	BAYHTRC109A	208/240	1	6.12/8.16	20900/27800	1	6.12/8.16	---	37/43(3)	40/45	40/50
	BAYHTRC110A	208/240	1	7.93/10.56	27000/36000	1	7.93/10.56	---	48/55(3)	50/60	50/60
	BAYHTRC117A	208/240	1	12.98/17.28	44300/59000	1	12.98/17.28	---	78/90(3)	80/90	100/100
WCH/TCH060F1 (7)	BAYHTRC106A	208/240	1	4.33/5.76	14800/19600	1	4.33/5.76	---	26/30(3)	30/30	30/30
	BAYHTRC109A	208/240	1	6.12/8.16	20900/27800	1	6.12/8.16	---	37/43(3)	40/45	40/50
	BAYHTRC111A	208/240	1	7.93/10.56	27000/36000	1	7.93/10.56	---	48/55(3)	50/60	50/60
	BAYHTRC117A	208/240	1	12.98/17.28	44300/59000	1	12.98/17.28	---	78/90(3)	80/90	100/100
WCH/TCH024B1 WCH/TCH030B1 WCH/TCH036B1 WCH/TCH042B1	BAYHTRC106A	208/240	1	4.33/5.76	14800/19600	1	4.33/5.76	---	26/30(3)	30/30	30/30
	BAYHTRC108A	208/240	1	6.12/8.16	20885/27850	1	6.12/8.16	---	35/40(3)	35/40	40/40
	BAYHTRC111A	208/240	1	7.93/10.56	27000/36000	1	7.93/10.56	---	48/55(3)	50/60	50/60
	BAYHTRC112A	208/240	1	8.65/11.52	29500/39300	1	8.65/11.52	---	52/60(3)	60/60	60/60
WCH/TCH024C1 WCH/TCH030C1 WCH/TCH036C1 (7) WCH/TCH042C1 (7)	BAYHTRC106A	208/240	1	4.33/5.76	14800/19600	1	4.33/5.76	---	26/30(3)	30/30	30/30
	BAYHTRC109A	208/240	1	6.12/8.16	20900/27800	1	6.12/8.16	---	37/43(3)	40/45	40/50
	BAYHTRC111A	208/240	1	7.93/10.56	27000/36000	1	7.93/10.56	---	48/55(3)	50/60	50/60
WCH/TCH030B/C1 WCH/TCH036B/C1 WCH/TCH042B/C1	BAYHTRC117A	208/240	1	12.98/17.28	44300/59000	1	12.98/17.28	---	78/90(3)	80/90	100/100
WCH/TCH036B3 WCH/TCH042B3	BAYHTRC306A	208/240	3	4.33/5.76	14800/19600	1	4.33/5.76	---	15/18(3)	15/20	15/20
	BAYHTRC312A	208/240	3	8.65/11.52	29500/39300	1	8.65/11.52	---	30/35(3)	30/35	30/35
	BAYHTRC317A	208/240	3	12.98/17.28	44300/59000	1	12.98/17.28	---	45/52(3)	50/60	50/60
WCH/TCH036B4 WCH/TCH042B4	BAYHTRC406A	480	3	5.76	19600	1	5.76	---	9(3)	15	15
	BAYHTRC412A	480	3	11.52	39300	1	11.52	---	18(3)	20	20
	BAYHTRC417A	480	3	17.28	59000	1	17.28	---	26(3)	30	3

NOTES:

- Any power supply and circuits must be wired and protected in accordance with local electrical codes.
- The MCA values listed are for electric heater only.
- Field wire must be rated at least 75°C.
- The HACR circuit breaker is for U.S.A. installations only.

- For Canada installation reference only.
- BAYHTRC110A only approved for WCH/TCH048F1 models.
- BAYHTRC109A only approved for T/WCH036/042C1 and T/WCH048/060F1 models.

INSTALLER'S GUIDE

SINGLE PACKAGE UNIT INSTRUCTION

These instructions are for the installation of supplementary heaters in single package units described in the table below.

These instructions do not purport to cover all variations in system hookups nor to provide for every possible contingency to be met in connection with installation. Should further information be desired or should particular problems arise which are not covered sufficiently for the purchaser's purposes, the matter should be referred to the manufacturer.

1. Check for any shipping damage, and if any, report it to the carrier immediately.
2. Check the heater nameplate and compare with the table on page 2 - make certain that the available power supply complies with the table for the particular heater being used.

INSTALLATION OF HEATERS (EXCEPT C117A)

1. Remove heater control box cover, save the two (2) cover screws for reinstalling the cover later. See figure 1.
2. Remove the units top access panel.
3. Remove the appropriate high voltage entrance knockout on the side panel of the unit. See figure 2. (NOTE: TCH/WCH048/060F models have knockout on the opposite side as shown.)
4. Slide the heater assembly into the cavity between the blower scroll and the discharge air duct flanges. See figure 2.
5. Align the two (2) holes in the top flange of the control box with the two (2) holes in the top flange of the baffle plate. Secure with two (2) screws provided with the heater. See figure 2. (NOTE: Heater orientation is opposite as shown on TCH/WCH048/060F models.)
6. Connect the heaters' high voltage leads to the field supplied leads as follows.
 - a. route the field high voltage leads through the high voltage entrance knockout on unit side panel.
 - b. Wire leads together in accordance to National and Local Codes using good wiring practices and procedures, see "Field Wiring Connections on heater wiring diagram.
7. Depress the wires into the field junction cavity.
8. Connect the unit's low voltage leads and the heater's low voltage leads together via the polarized plug. Depress the connected polarized plug into the field junction cavity.
9. Replace the heater control box cover with the two (2) previously removed screws.
10. Replace the unit's top access panel.
11. Mark the heater installed nameplate per instructions on the nameplate. (See figure 2.) (Heater nameplate is located on the side panel of the unit.)

INSTALLATION OF BAYHTRC117A HEATER WITH FUSE BOX

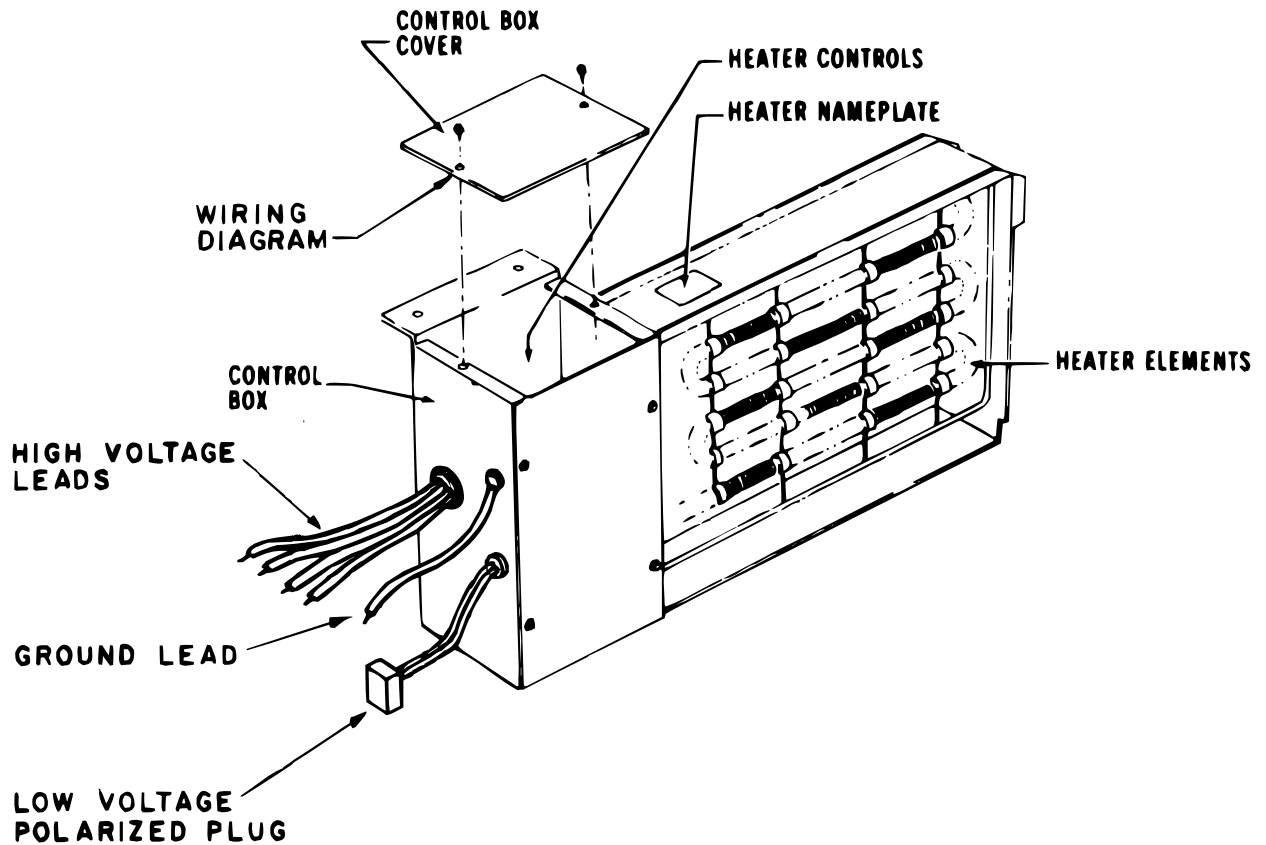
1. Remove heater control box cover, save the two (2) cover screws for reinstating the cover later. See figure 1.
2. Remove the units top access panel.
3. On the backside of the fuse box remove the sealing locknut from the chase nipple.
4. Remove the appropriate larger (1-3/8") high voltage entrance knockout on the side panel of the unit. See figure 3. Remove unit insulation from the knockout opening.
5. Mount the fuse box on the side of the unit as shown in figure 3. Place the chase nipple with the washer through the knockout on the unit and tighten sealing locknut firmly on the chase nipple. (NOTE: TCH/WCH048/060F models have knockout on the opposite side as shown.)

NOTE: Sealing side of the locknut must be against the unit's side panel.

6. Secure fuse box to the unit with the factory supplied screw. See figure 3.
7. Slide the heater assembly into the cavity between the blower scroll and the discharge duct flange. See figure 3. (NOTE: Heater orientation is opposite as shown on TCH/WCH048/060F models.)
8. Align the two (2) holes in the top flange of the control box with the two (2) holes in the top flange of the baffle plate. Secure with two (2) screws provided with the heater. See figure 2.
9. Route the heater's high voltage leads through the chase nipple in the back of the fuse box. See figure 4.
10. Connect the heater's high voltage leads to the fuse block as shown in figure 4 and also shown on the heater's wiring diagram located on the back of the control box cover.
11. Route the field high voltage leads into the fuse box through the knockout on the fuse box.
12. Connect the field high voltage leads and the ground wire to the fuse block and ground lug as shown on the heater wiring diagram. See figure 4.
13. Connect the unit's low voltage leads and the heater's low voltage leads together via the polarized plug. Depress the connected polarized plug into the field junction cavity.
14. Replace the heater control box cover with the two (2) screws removed in step 1.
15. Replace the unit's top access panel removed in step 2.
16. Mark the heater installed nameplate per instructions on the nameplate. (See figure 2.) (Heater nameplate is located on the side panel of the unit.)

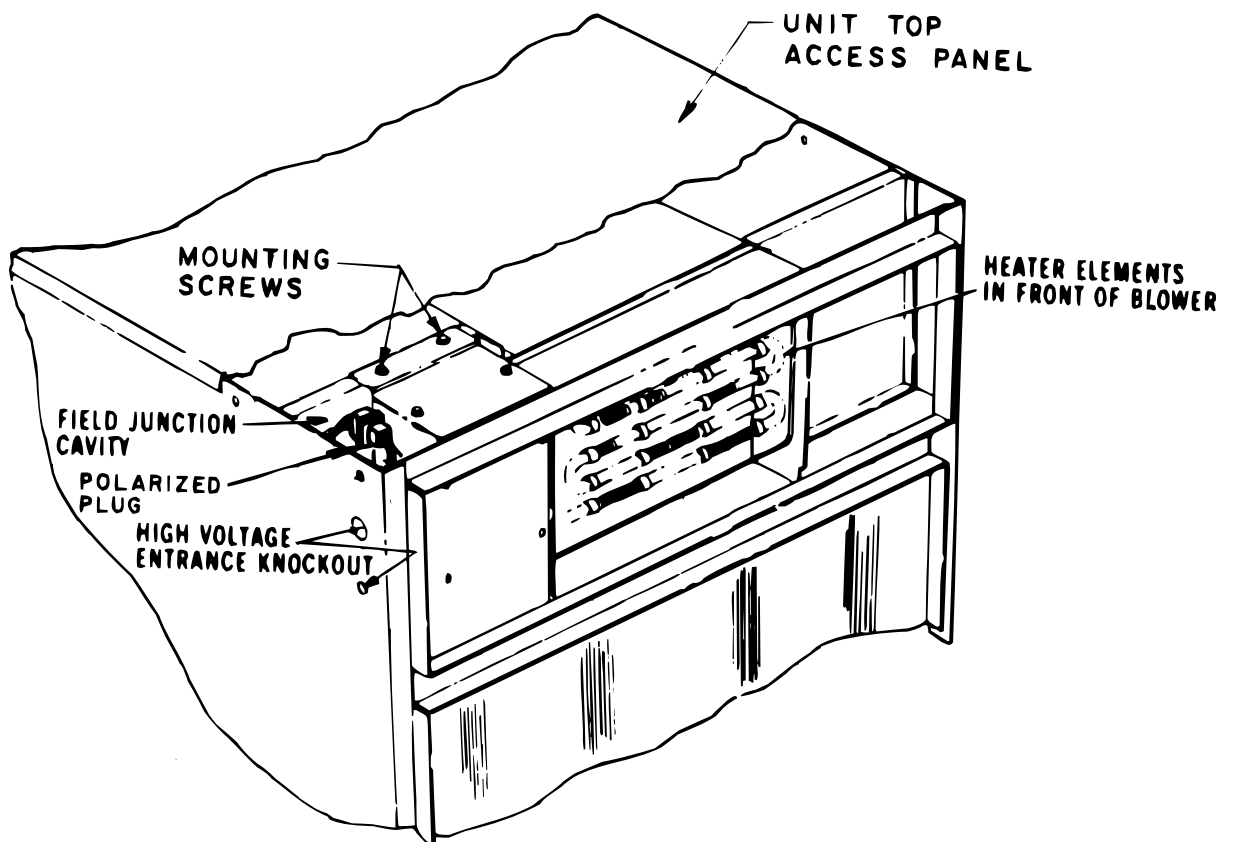
1

TYPICAL SINGLE ELEMENT HEATER



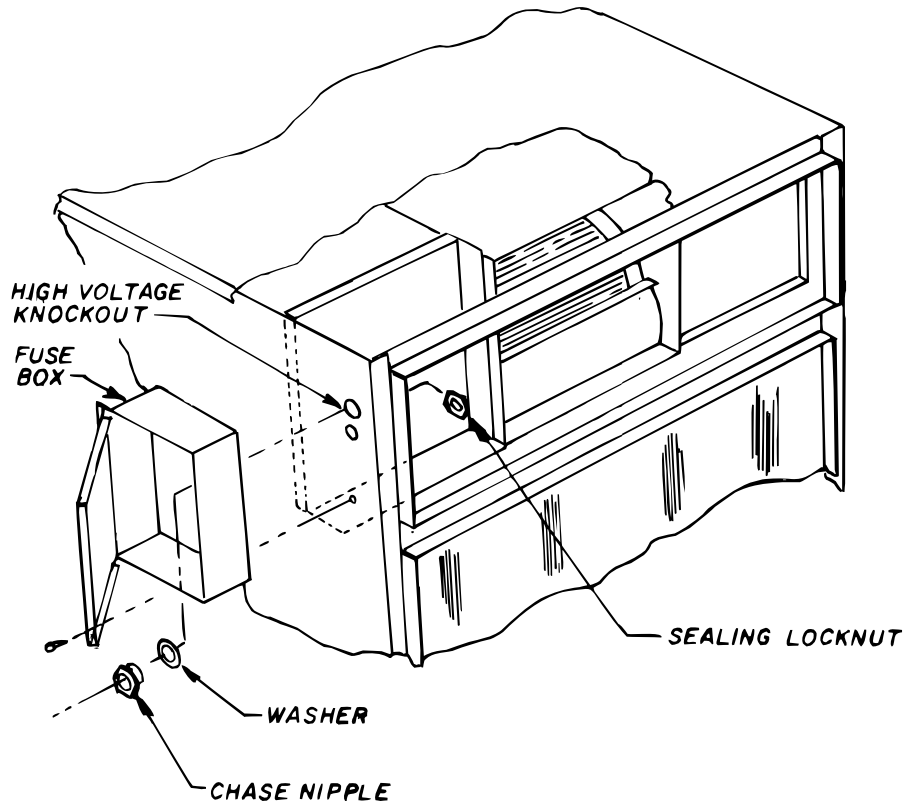
2

TYPICAL SINGLE ELEMENT HEATER INSTALLATION



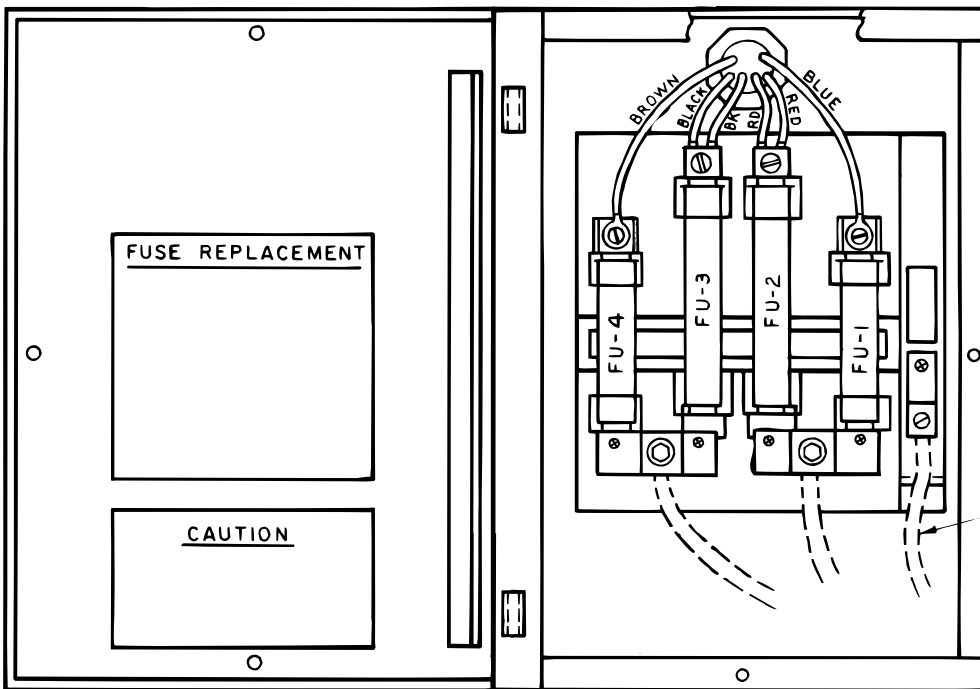
3

TYPICAL DUAL ELEMENT HEATER



4

DUAL ELEMENT HEATER FUSE BOX BAYHTRC117A



WIRING SHOWN DASHED
IS SUPPLIED BY FIELD.

WIRING SHOWN SOLID
IS SUPPLIED BY FACTORY.

GROUND
WIRE

Trane

6200 Troup Highway
Tyler, TX 75707-9010

A business of American Standard Companies

Technical Literature - Printed in U.S.A.