

# ProPEX lead-free (LF) brass flange adapter kits

Submittal information

Date submitted:

## Project Information

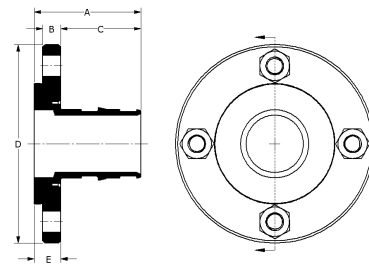
Job name :	Location :
Engineer :	Date submitted:
Contractor :	Submitted by:
Manufacturer's representative :	Approved by :

## Technical Data

Temp./pressure ratings	73°F (23°C) at 160 psi (11 bar)
	180°F (82°C) at 100 psi (6.9 bar)
	200°F (93°C) at 80 psi (5.5 bar)

## Product information and application use

ProPEX® Lead-free (LF) Brass Flange Adapter Kit connects Uponor PEX tubing to any compatible flange. Flanges conform to ANSI 16.5 150 Standard, are powder coated with an EPDM insulator adhered to the plate steel flange protruding inside of the steel flange to prevent contact with the LF brass flange adapter.



Part name	Part no.	A [inch]	B [inch]	C [inch]	D [inch]	E [inch]	Cv	Weight per UOM [lbs/UOM]	Equivalent length through [ft]	End type 1	End type 2
ProPEX LF Brass Flange Adapter Kit, 2 1/2" PEX (150 lb.)	LF2982525	3.77	0.63	2.837	7	0.933	131.5	9.2	7.6	ProPEX 2-1/2"	Flange 2-1/2"
ProPEX LF Brass Flange Adapter Kit, 3" PEX (150 lb.)	LF2983030	4.32	0.63	3.387	7.5	-	311	10.8	2.2	ProPEX 3"	Flange 3"

## Installation

ProPEX Expansion Tool and ProPEX Rings (sold separately) are required for connecting the PEX tubing. Refer to the Uponor AquaPEX® Professional Plumbing Installation Guide or Uponor Hydronic Piping Design Assistance Manual for additional information.

## Related applications

- PEX-a Plumbing Systems
- Hydronic Radiant Heating and Cooling Systems
- Snow Melting Systems
- Turf Conditioning Systems
- Permafrost Prevention Systems

## Codes

UPC|IBC|IRC|IPC|NPC of Canada|UMC|NSPC|IMC

## Standards

NSF-372|ASTM F877|ASTM F1960|CSA B137.5|NSF-61|NSF-14

## Listings

HUD MR 1269|APMO-ES|ICC-ES-PMG|cNSFus-pw-G|U.P.Code

## Trademark Information

ProPEX® is a registered trademark of Uponor Inc. ProPEX™ is a trademark of Uponor Ltd.

## Contact Information

Uponor Inc.  
5925 148th Street West  
Apple Valley, MN 55124  
T 800.321.4739  
F 952.891.2008

Uponor Ltd.  
6510 Kennedy Road  
Mississauga, ON L5T 2X4  
T 888.594.7726  
F 800.636.9517