



# SYMMONS® Vella™

## Kitchen Faucet S-2610

### Installation and Service Instructions



#### Model Numbers

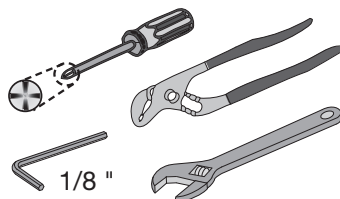
S-2610..... Kitchen Faucet

#### Decorative Finish Codes

*append to part numbers when applicable*

- STN Satin Nickel
- STS Stainless Steel
- Chrome (standard)

#### Tools & Materials




#### ☎ Need Help?

Symmons customer service:

(800) 796-6667, (781) 848-2250

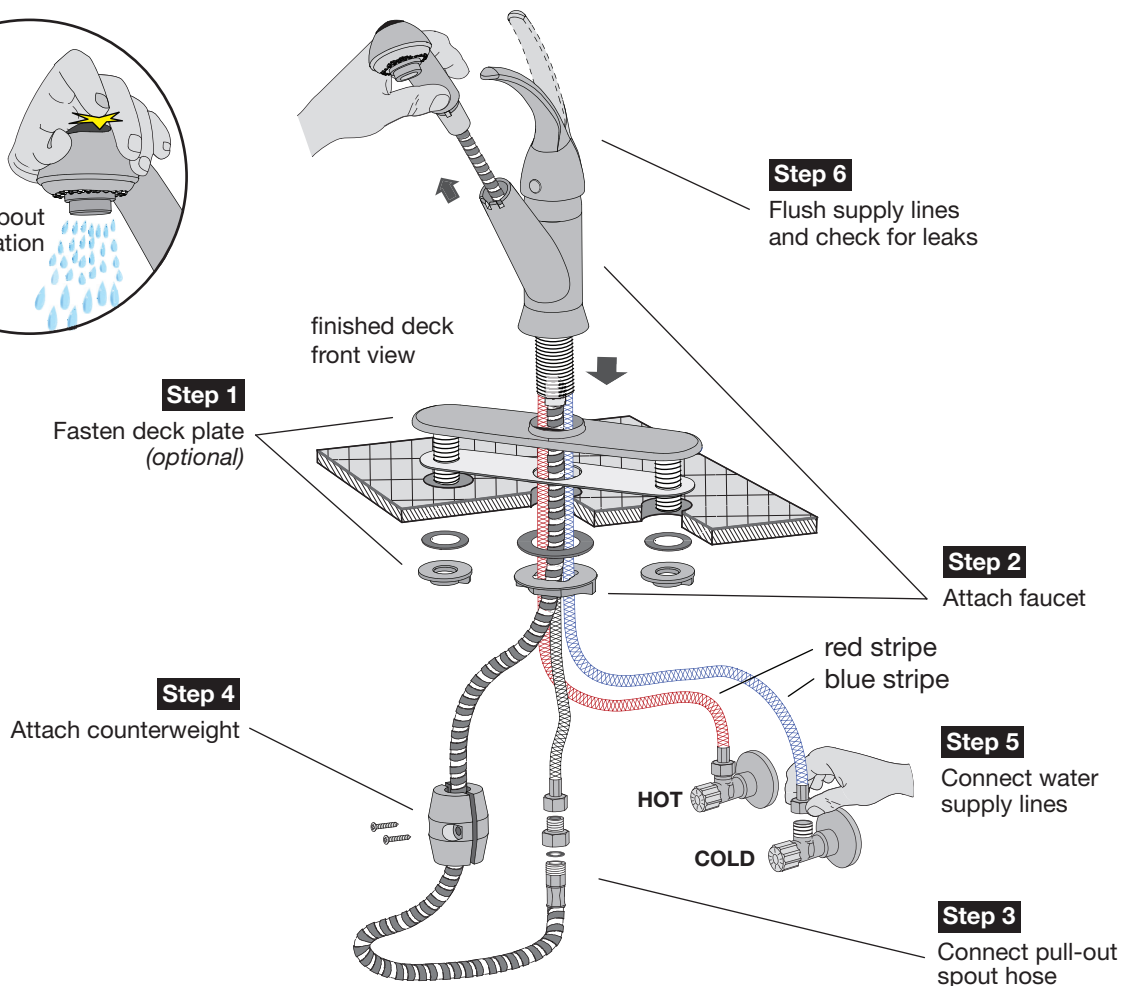
Email: [customerservice@symmons.com](mailto:customerservice@symmons.com)

Monday - Friday 8:00 am - 7:30 pm EST

 [www.symmons.com/service](http://www.symmons.com/service)

- Technical help
- Product information
- Warranty policy

### Quick Install Guide Vella Kitchen Faucet, S-2610

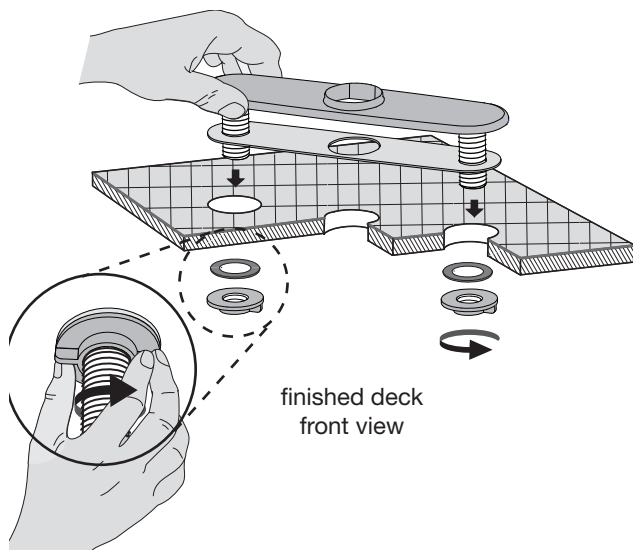


# Installation Instructions

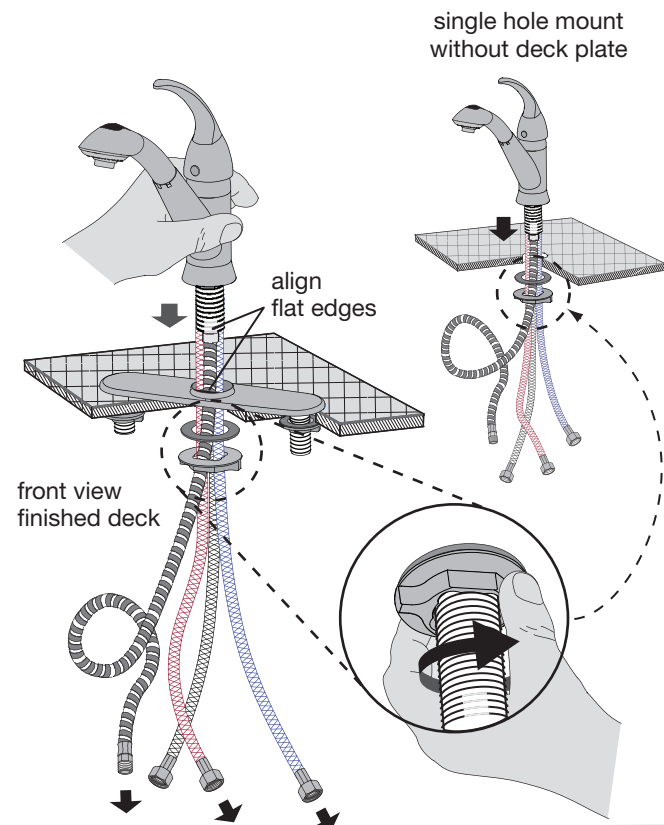
**Caution:** If replacing an older faucet ensure water supply is turned OFF before removing and then turn faucet handles ON to relieve water pressure.

## Step 1 Attach deck plate (optional)

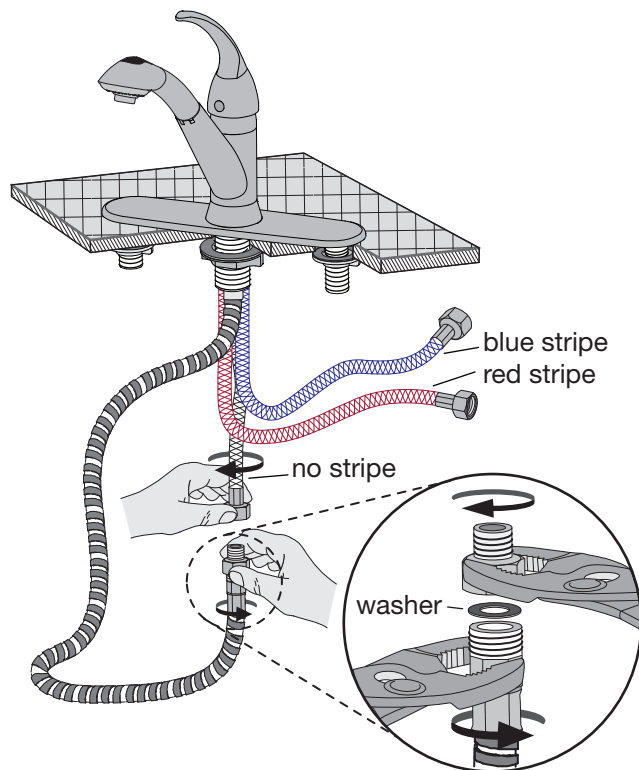
Installing deck plate is optional. Plate is typically used when replacing a faucet to cover existing holes.



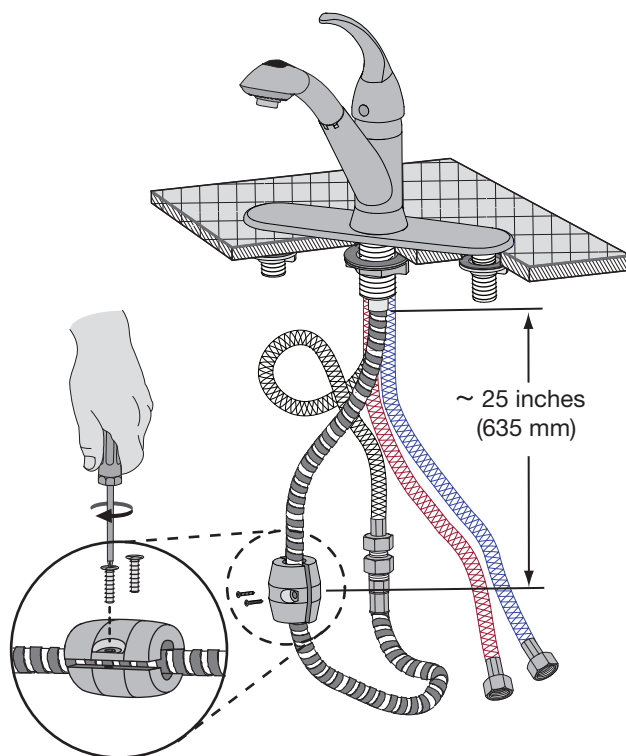
## Step 2 Attach faucet assembly to deck



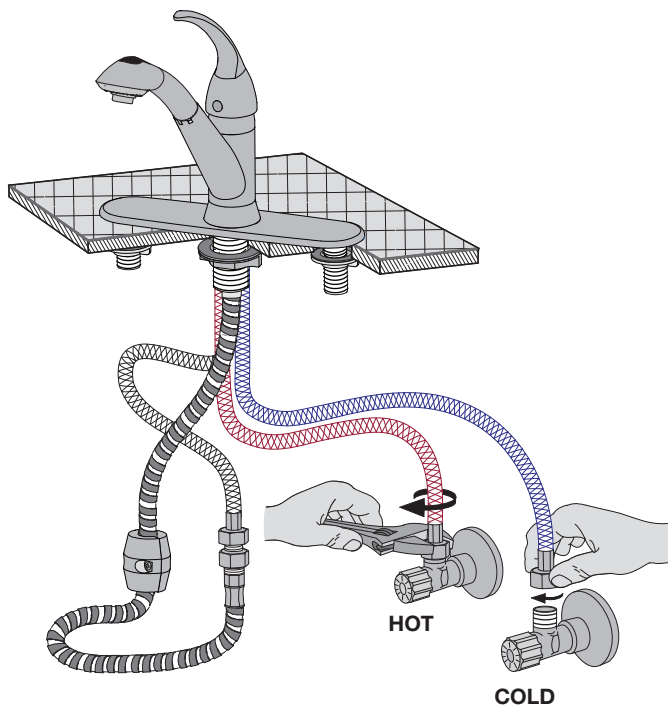
## Step 3 Connect pull-out spout hose



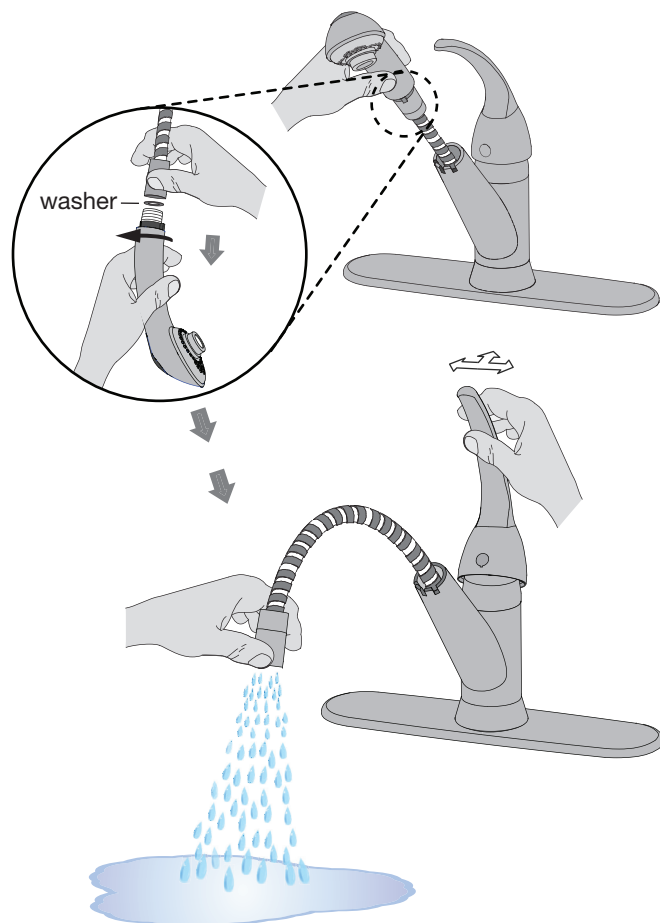
## Step 4 Attach counterweight to hose



### Step 5 Connect supply lines



### Step 6 Flush supply lines and check for leaks

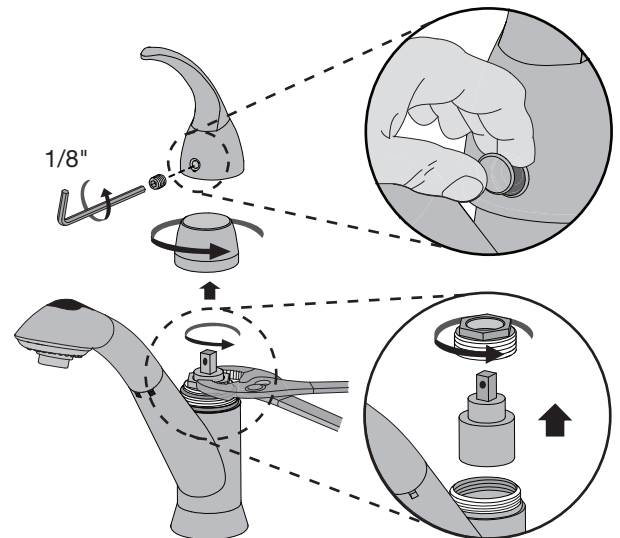


### Care of faucet finish

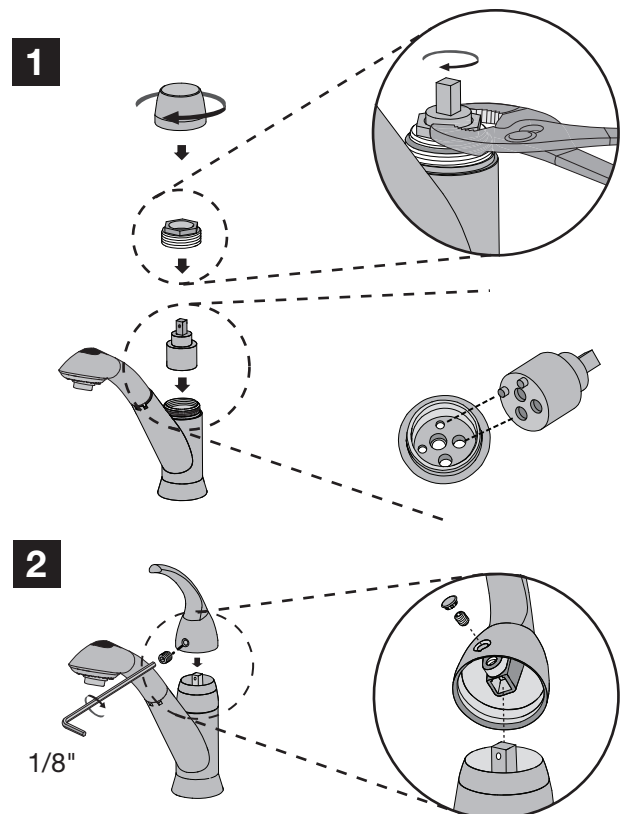
Clean finish area by using mild soap and water or non-abrasive cleaner and then rinse immediately. A non-abrasive wax may be used to preserve finish area.

### Valve cartridge replacement

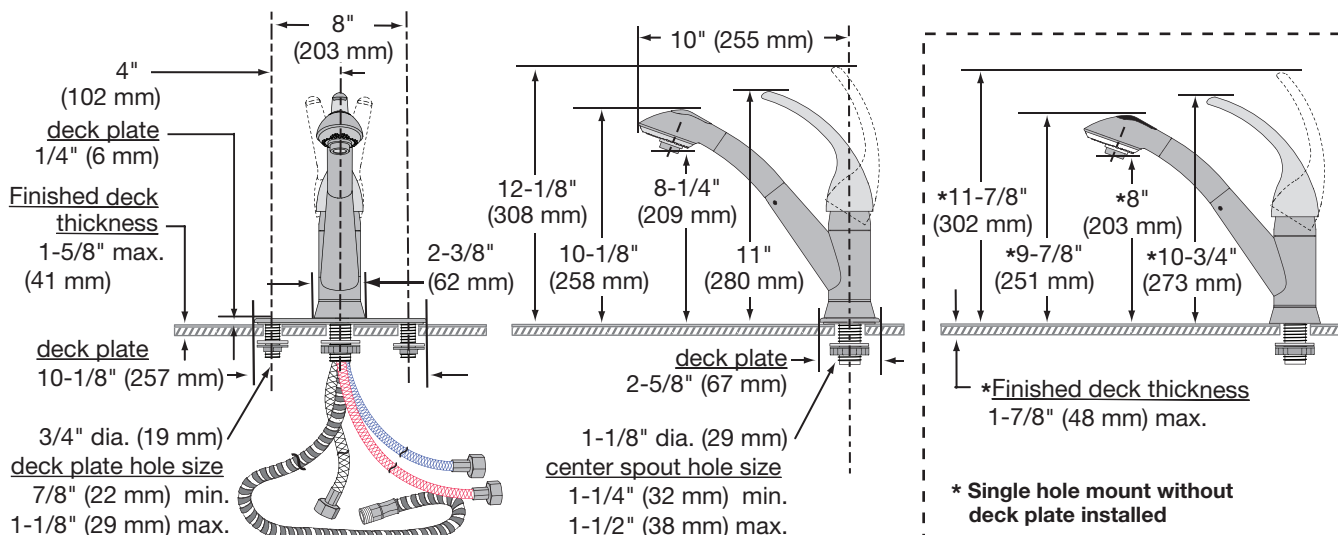
#### Removing handle and cartridge



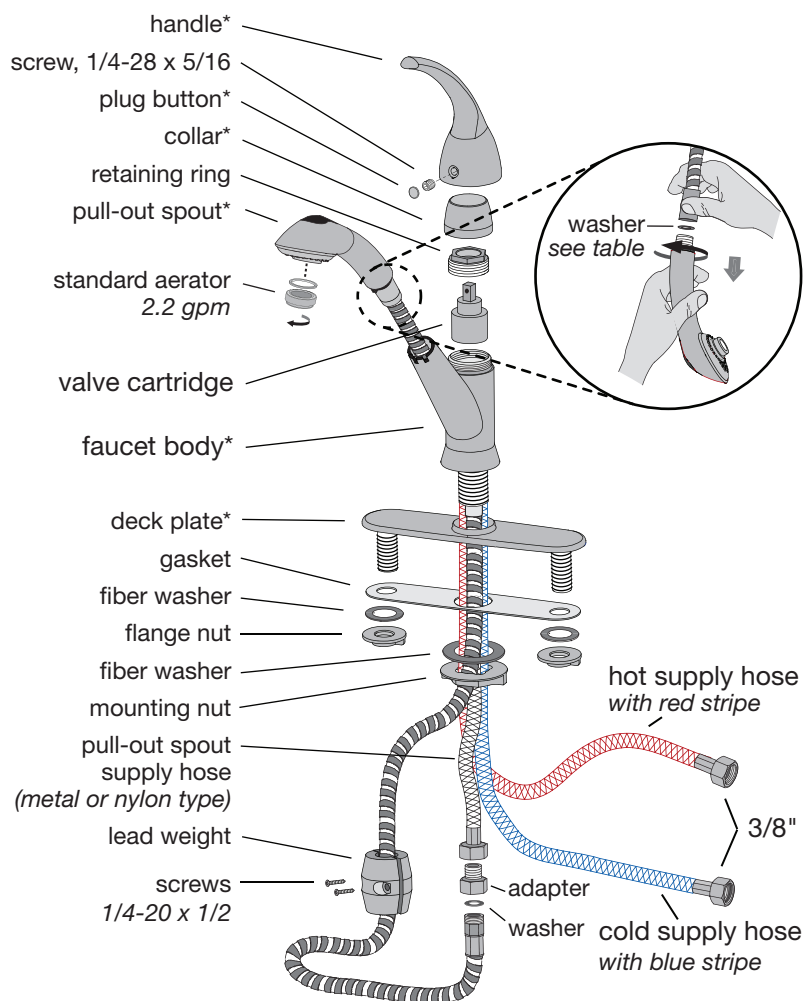
#### Replacing cartridge and handle

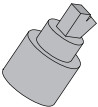





## Dimensions *Vella Kitchen Faucet, S-2610*



## Parts Assembly *Vella Kitchen Faucet, S-2610*



| Replacement Parts |  |
|-------------------|--|
| Part Number       | Item   |
| KN-4              | valve cartridge    |
| SC-12W            | <u>Pull-out spout hose washer</u><br>Washer for flexible metal type hose  |
| KN-236A           | Washer for nylon type hose    |
| LN-287 (TBD)      | <u>aerator flow rates</u><br>2.2 gpm (8.3L/min)<br>1.5 gpm (5.7L/min)     |

\* Note: When ordering parts for faucets with an optional decorative finish, append appropriate three letter suffix code to part numbers marked with an asterisk (\*).

### Ordering replacement parts:

Symmons customer service: (800) 796-6667, (781) 848-2250 M-F 8:00 am - 7:30 pm EST  
Symmons distributors: [www.symmons.com](http://www.symmons.com)