

SPECIFICATIONS

AMALFI™ TWO HANDLE MINI-WIDESPREAD LAVATORY FAUCET

Model

D304130

Description

- Ceramic disc valves
- 7 3/4" high spout, 3 5/8" spout length, laminar flow
- Includes 50/50 touch down drain DA505219P with color-matching flange and cap and black tailpiece
- 3 hole mount, 4" - 12" installation
- 1.2gpm (4.5L/min) maximum flow rate @60 psi
- Meets CEC Requirement

Standards



NSF/ANSI 372

- NSF/ANSI 372



- ASME A112.18.1M/A112.18.1

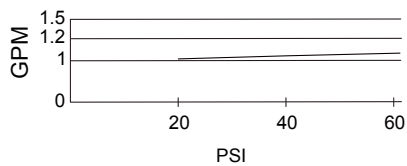


- ADA Accessibility Guidelines for Buildings and Facilities - 309.4 Operation for Operable Parts

Warranty

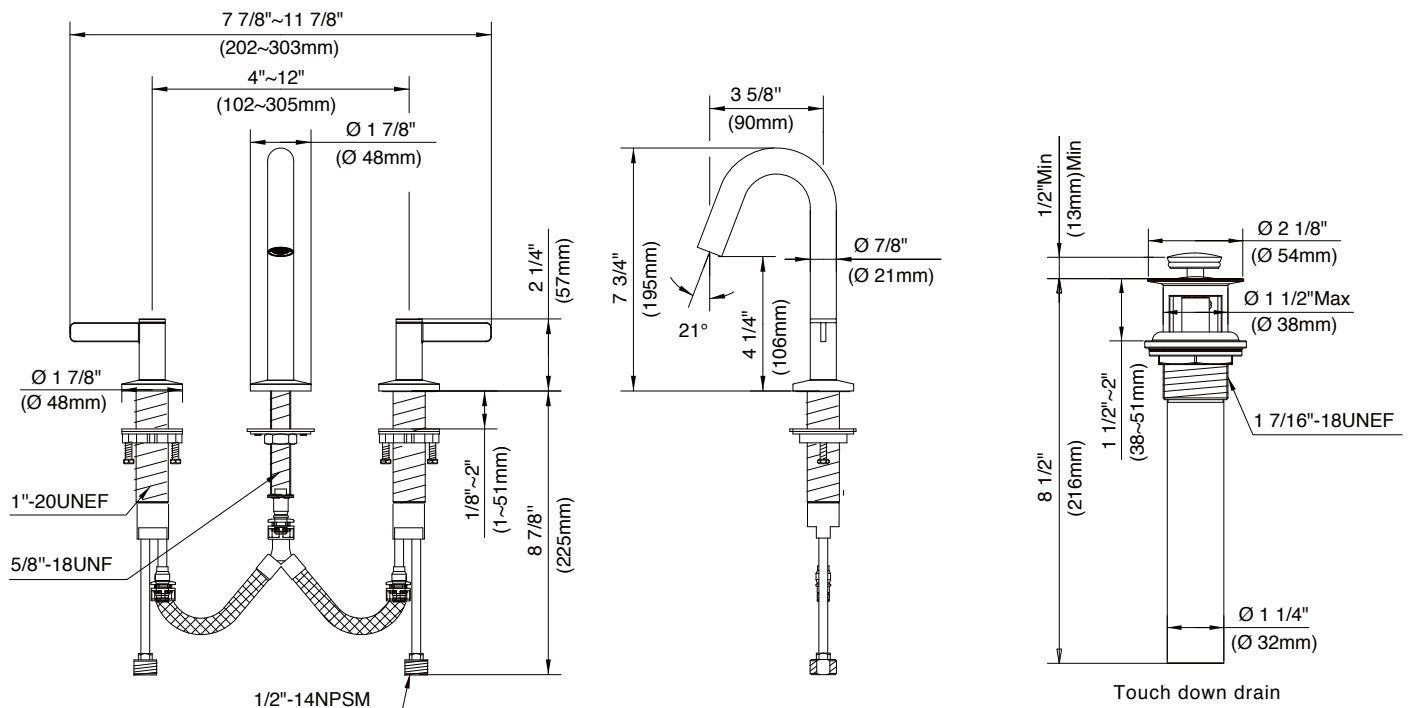
Danze products are covered by a manufacturer's limited "lifetime" warranty for manufacturing defects.

Flow Rate



Finishes Available

- Chrome
- Other: Refer to Price List for additional finish



Submittal Information:

Job Name: _____

Contractor: _____

Location: _____

Contact #: _____