

SPECIFICATIONS

SIRIUS™ TWO HANDLE WALL MOUNT LAVATORY FAUCET

Model

D316144T

Description

- Ceramic disc valves
- 10" spout length
- Natural water stream
- Includes metal touch down drain DA505918 with color matching cap and flange and chrome plated tailpiece
- 3 hole wall mount
- 1.2gpm (4.5L/min) maximum flow rate @60 psi
- Meets CEC Requirement

Standards



NSF/ANSI 372

• NSF/ANSI 372

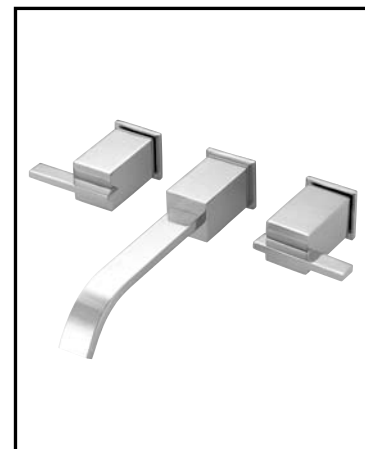
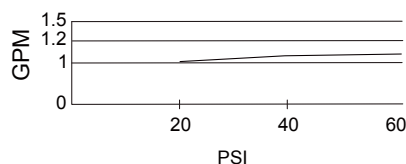
MEETS ASME
A112.18.1M/ A112.18.1

• ASME A112.18.1M/A112.18.1



- ADA Accessibility Guidelines for Buildings and Facilities - 309.4 Operation for Operable Parts

Flow Rate

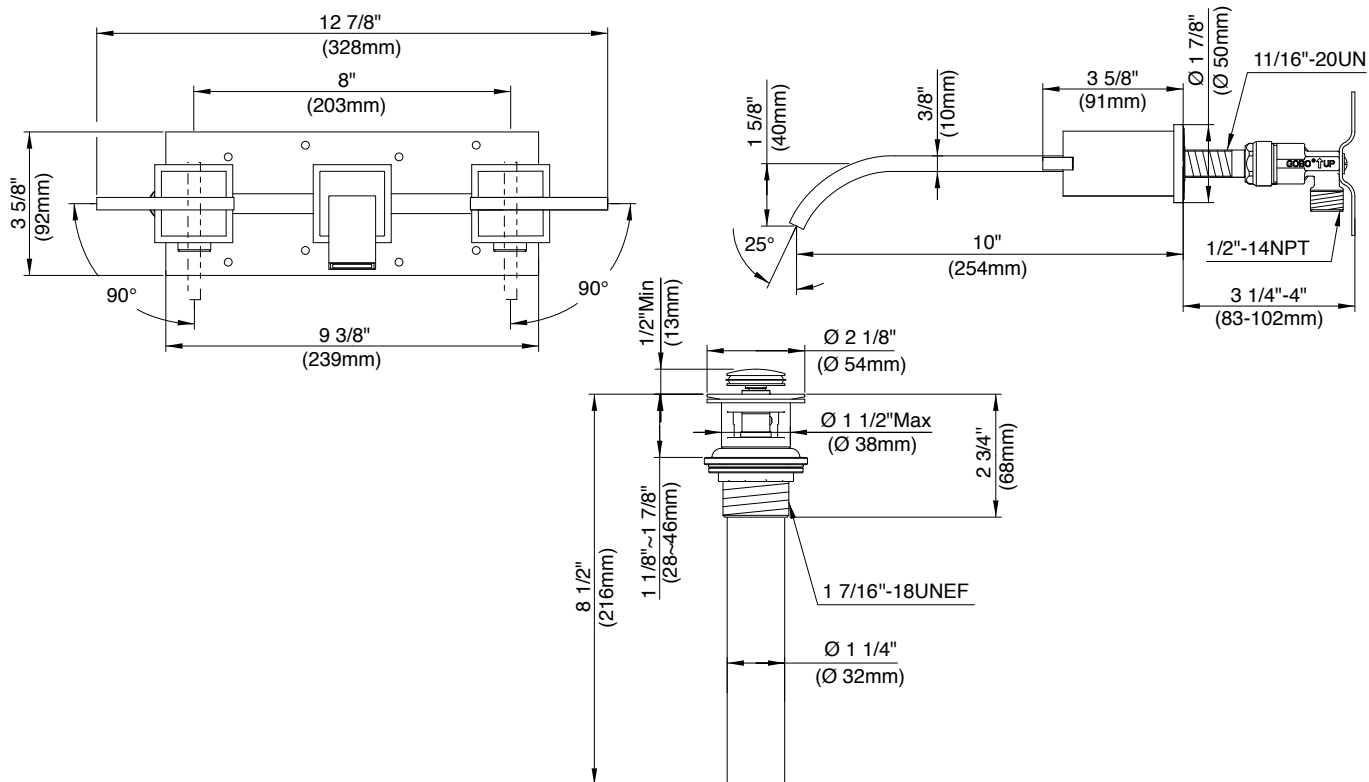


Finishes Available

- Chrome
- Other: Refer to Price List for additional finish

Warranty

Danze products are covered by a manufacturer's limited "lifetime" warranty for manufacturing defects.



Submittal Information:

Job Name: _____

Location: _____

Contractor: _____

Contact #: _____