

# Victaulic® VicFlex™ Sprinkler Fittings

## Series AH2 and AH2-CC Braided Flexible Hoses



Series AH2



Series AH2-CC

### 1.0 PRODUCT DESCRIPTION

#### Available Sizes by Component

**Series AH2 1"/DN25 ID Braided Hose:** 31, 36, 48, 60, 72"/790, 915, 1220, 1525, 1830 mm. Note: length includes adapter nipple and 5.75"/140 mm straight reducer.

**Series AH2-CC 1"/DN25 ID Braided Hose:** 31, 36, 48, 60, 72"/790, 915, 1220, 1525, 1830 mm.

Note: length includes captured coupling and 5.75"/140 mm straight reducer.

#### Connections

- **From Branchline**

- ¾"/20mm BSPT female thread (VdS only)
- 1 ¼"/32mm BSPT female thread (LPCB only)
- 1"/25mm NPT or BSPT female Thread
- 1"/25mm Grooved IGS (refer to Submittal 10.54 for additional IGS connections)
  - No. 116 CPVC Adapter (1"/25mm Female CPVC Socket x 1"/25mm Grooved IGS)
  - No. 142 Welded Outlet
  - Style 922 Outlet-T
  - Style 920N Mechanical-T Outlet
  - No. 65 Grooved End of Run Fitting

- **Hose Inlet**

- 1"/25mm Grooved IGS
- 1"/25mm NPT or BSPT male thread
- ¾"/20mm BSPT male thread (VdS only)
- 1 ¼"/32mm BSPT male thread (LPCB only)

ALWAYS REFER TO ANY NOTIFICATIONS AT THE END OF THIS DOCUMENT REGARDING PRODUCT INSTALLATION, MAINTENANCE OR SUPPORT.

System No.		Location	
Submitted By		Date	

Spec Section		Paragraph	
Approved		Date	

## 1.0 PRODUCT DESCRIPTION (CONTINUED)

### Maximum Allowable Sprinkler K-Factors

- FM (½"/15 mm reducer) K5.6/8,1 (S.I.), (¾"/20 mm reducer) K14.0/20,2 (S.I.)
- cULus (½"/15 mm reducer) K8.0/11,5 (S.I.), (¾"/20 mm reducer) K14.0/20,2 (S.I.)
- VdS/LPCB (½"/15 mm reducer) K5.6/8,1 (S.I.), (¾"/20 mm reducer) K8.0/11,5 (S.I.)

## 2.0 CERTIFICATION/LISTINGS



### NOTE

- The VicFlex Series AH2 Hose has been tested and evaluated by Spears® for acceptable use with Spears® CPVC Products and is therefore covered under the Spears® FlameGuard® Installer Protection Plan.

## 3.0 SPECIFICATIONS – MATERIAL

### Series AH2:

**Flexible Hose:** 300-series Stainless Steel  
**Collar/Weld Fitting:** 300-series Stainless Steel  
**Gasket Seal:** Victaulic EPDM  
**Isolation Ring:** Nylon  
**Nut and Nipple:** Carbon Steel, Zinc-Plated  
**Reducer (½"/15 mm or ¾"/20 mm):** Carbon Steel, Zinc-Plated  
**Low Profile Elbows:** Ductile Iron, Zinc-Plated

**Brackets:** Carbon Steel, Zinc-Plated

### Series AH2-CC:

**Flexible Hose:** 300-series Stainless Steel  
**Collar/Weld Fitting:** 300-series Stainless Steel  
**Gasket Seal:** Victaulic EPDM  
**Isolation Ring:** Nylon  
**Coupling Retainer Ring:** Polyethylene  
**Nut:** Carbon Steel, Zinc-Plated  
**Reducer (½"/15 mm or ¾"/20 mm):** Carbon Steel, Zinc-Plated  
**Low Profile Elbows:** Ductile Iron, Zinc-Plated  
**Housing:** Ductile iron conforming to ASTM A 536, Grade 65-45-12. Ductile iron conforming to ASTM A 395, Grade 65-45-15, is available upon special request.

### Coupling Housing Coating:

- Orange enamel (North America, Asia Pacific).
- Red enamel (Europe).
- Hot dipped galvanized.

### Gasket:<sup>1</sup>

#### Grade "E" EPDM (Type A)

FireLock EZ products have been Listed by Underwriters Laboratories Inc., Underwriters Laboratories of Canada Limited, and Approved by Factory Mutual Research for wet and dry (oil free air) sprinkler services within the rated working pressure.

<sup>1</sup> Services listed are General Service Guidelines only. It should be noted that there are services for which these gaskets are not compatible. Reference should always be made to the latest [Victaulic Gasket Selection Guide](#) for specific gasket service guidelines and for a listing of services which are not compatible.

**Bolts/Nut:** Zinc electroplated carbon steel, trackhead meeting the physical and chemical requirements of ASTM A 449 and physical requirements of ASTM A 183.

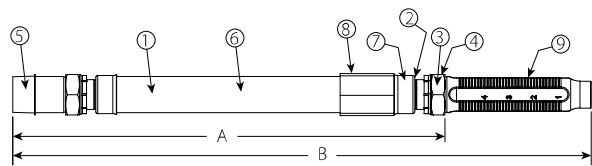
**Linkage:** CrMo Alloy Steel zinc electroplated per ASTM B633 Zn/Fe 5, Type III Finish

**No. 116 Adapter Fitting:** CPVC and Brass

**Seal:** Victaulic EPDM

## 4.0 DIMENSIONS

### Product Details - Series AH2 Braided Hose

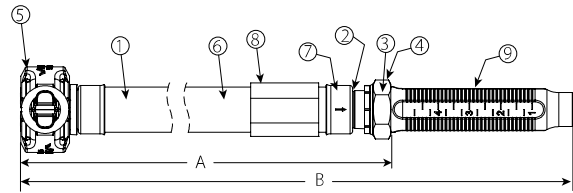


Item	Description
1	Flexible Hose
2	Isolation Ring
3	Gasket
4	Nut
5	Adapter Nipple
6	Braid
7	Collar/Weld Fitting
8	Sleeve
9	Reducer

### Hose Length Dimensions

Hose Length inches mm	A inches mm	B inches mm
31 790	25.3 641	31 790
36 915	31.3 794	36 915
48 1219	42.3 1073	48 1220
60 1525	54.3 1378	60 1525
72 1830	66.3 1683	72 1830

### Series AH2-CC Braided Hose



Item	Description
1	Flexible Hose
2	Isolation Ring
3	Gasket
4	Nut
5	Captured Coupling
6	Braid
7	Collar/Weld Fitting
8	Sleeve
9	Reducer

Hose Length inches mm	A inches mm	B inches mm
31 790	24.5 622	29.8 757
36 915	29.5 749	34.8 884
48 1219	41.5 1054	46.8 1189
60 1525	53.5 1359	58.8 1494
72 1830	65.5 1664	70.8 1798