

# SLOAN®

Water Connects Us®

## HYB-1000 HYBRID URINAL

with Jetrinse™ Solution

### Technology NEW CONSTRUCTION

### INSTALLATION INSTRUCTIONS

#### BEFORE STARTING INSTALLATION:

**IMPORTANT** Do not install on copper DWV due to copper's susceptibility to corrosion.

- ADA requires a lip height of 17" or lower. To allow for variances and assure compliance Sloan recommends roughing the drain line to achieve a 16-1/2" lip height

- Check slope. Downhill slope, per code, is essential because waterfree urinals depend on gravity flow.
- Check DWV material. Suitable materials include cast iron, PVC, ABS and galvanized steel.

#### TUBE CUTTING CHART

- Measure drain nipple depth (inches) to find trim length (inches)
- 13 7/8" or more DO NOT CUT
- 3 3/4" or less DO NOT USE TUBE

OR LESS	TRIM	OR LESS	TRIM	OR LESS	TRIM
13 3/4"	1/4"	10 1/4"	3 3/4"	6 3/4"	7 1/4"
13 1/2"	1/2"	10	4	6 1/2"	7 1/2"
13 1/4"	3/4"	9 3/4"	4 1/4"	6 1/4"	7 3/4"
13	1"	9 1/2"	4 1/2"	6	8
12 3/4"	1 1/4"	9 1/4"	4 3/4"	5 3/4"	8 1/4"
12 1/2"	1 1/2"	9	5	5 1/2"	8 1/2"
12 1/4"	1 3/4"	8 3/4"	5 1/4"	5 1/4"	8 3/4"
12	2"	8 1/2"	5 1/2"	5	9
11 3/4"	2 1/4"	8 1/4"	5 3/4"	4 3/4"	9 1/4"
11 1/2"	2 1/2"	8	6	4 1/2"	9 1/2"
11 1/4"	2 3/4"	7 3/4"	6 1/4"	4 1/4"	9 3/4"
11	3"	7 1/2"	6 1/2"	4	10
10 3/4"	3 1/4"	7 1/4"	6 3/4"		
10 1/2"	3 1/2"	7	7		

#### CUSTOMER CARE

1-800-982-5839

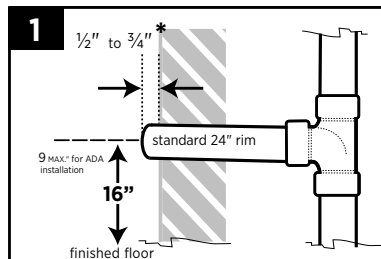
customer.service@sloanvalve.com



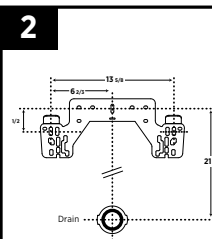
**CAUTION** After removing any urinal from the drain line, it's normal for certain naturally occurring, but potentially hazardous sewer gases, to escape through the opening until the waterless cartridge is installed properly into the waterless urinal. If you need to leave an open drain line unattended after removing the urinal from the wall, temporarily wedge paper towels or a rag into the drain hole to reduce any outflow of sewer gases, and remove the paper towels or rag prior to completing the urinal or cartridge installation. **Never smoke, have an open flame, or place your nose or mouth near open drain lines or waterless urinal housings into which a cartridge is not yet properly installed.** You also can wear a breathing mask when removing or installing any waterless urinal or cartridge to reduce potential exposure to any such gases

Sloan.com

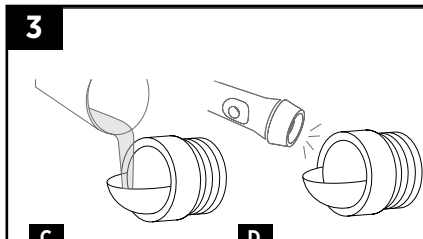
The information in this document is subject to change without notice.  
©2018 Sloan Valve Company All rights reserved.



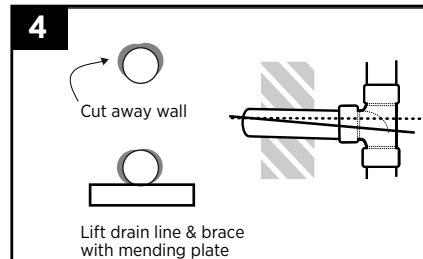
**Set drain line height** 16" from finished floor (standard 24" rim) or 9" Max. for ADA installation. Threaded nipple should extend 1/2 to 3/4" from wall. **\* IMPORTANT** Nipple must not extend more than 3/4" past the finished wall



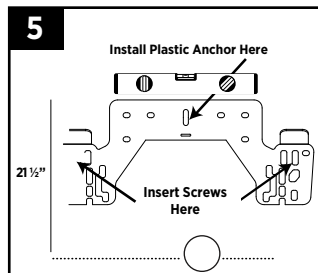
**Carrier stud placement** If using in-wall carrier set bearing as shown above.



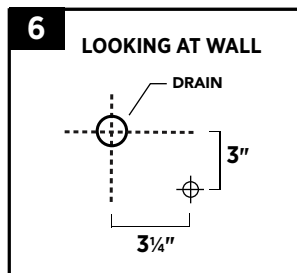
**A. Clean Face** of drain nipple.  
**B. Install the clear inspection disc** with the compression nut.  
**C. Slowly pour water** into the drain.  
**D. Use a flashlight to check the pitch/slope** no water should be present in the inspection disc or nipple.  
**E. Remove disc and nut** after inspection.



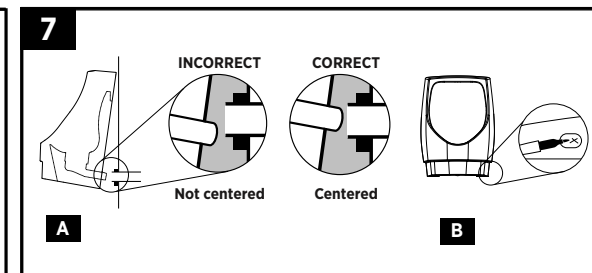
**Adjust drain to achieve pitch** only if standing water is present (code requires 1/4" drop per foot of drain line for proper pitch). Seal wall according to code.



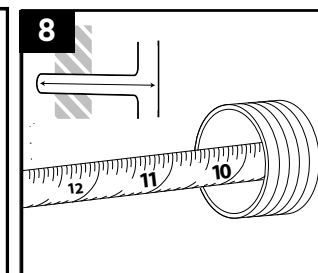
**Measure and mark rough in.** If in-wall carrier is not used. Use a 5/16" masonry bit to drill hole, then install the hanger bracket with one plastic anchor and screw.



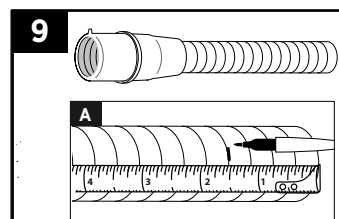
**Install 1/2" x 3/8" compression straight stop** with the handle facing floor.



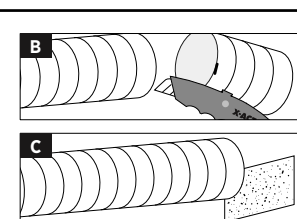
**A. Hang bowl on the bracket** and check tail pipe alignment, then remove the bowl and adjust the bracket as needed. Re-hang and re-check bowl alignment with the drain line. Tail pipe should align with center of drain line.  
**B. Mark anchor holes** then remove bowl without moving hanger bracket.



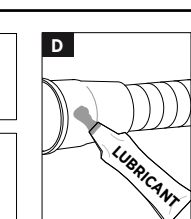
**Determine the drain nipple length** by measuring the distance between the back of the sanitary tee (or elbow) to the front edge of the nipple.



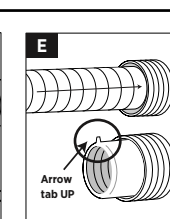
**A. Find the drain nipple depth** on the Tube Cutting Chart (left). **Measure and mark the specified trim length** on the insert tube at the nearest 1/4" groove.



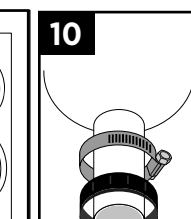
**B. Cut the tube** at the groove using a sharp utility knife to ensure a square, flat cut.



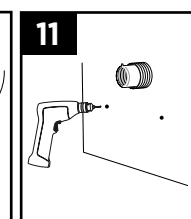
**C. Clean burrs** from the cut end by using emery paper.



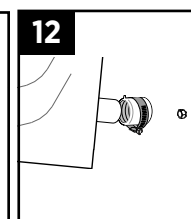
**D. Apply lubricant** to the outside of the rubber bushing and ribbed inside area.



**E. Insert tube and bushing.** **IMPORTANT** Be sure arrow tab is at the 12:00 position.



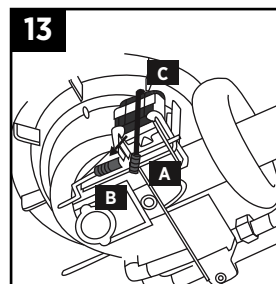
Apply lubricant to tailpipe of housing.  
**Place hose clamp and compression nut** onto the housing tailpipe.



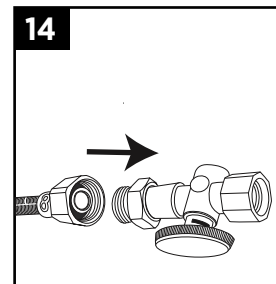
**Drill holes** with 3/16" masonry bit for the lower anchor screws and insert plastic anchors.



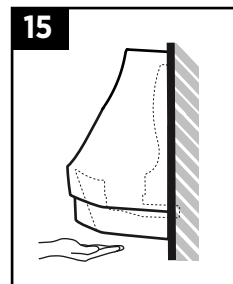
**Hang the bowl** inserting tailpipe into bushing, and tighten coupling and hose clamp. Install anchor screws with washers.



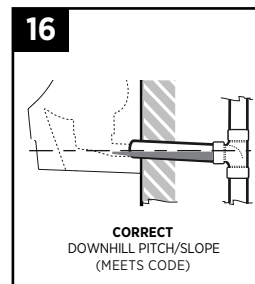
**Connect battery A to wire B.** Wait 1 minute for system to start up. Note system will allow 2 manual flushing before pausing 30 seconds.



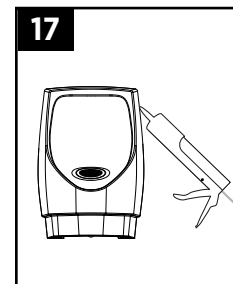
**Put adaptor onto stop then attach supply line to adaptor.** Turn water on and assure there are no connection leaks.



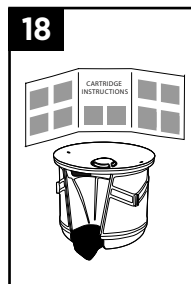
**Wave hand under IR switch** to activate test rinse and ensure there is no standing water in housing. System will operate automatically every 48 hours from battery plug in.



**If standing water exists,** line is clogged or there is improper slope installed in housing. See step 4, correct and reinstall urinal



**Caulk the bowl** to the wall if there is good flow and no leaks or standing water in housing.



**Install cartridge** as per the cartridge instruction sheet.