



HAND SINKS

WALL MOUNT HAND SINKS

MODEL: _____ PROJECT: _____ ITEM #: _____ QTY: _____

PRODUCT IMAGES



STANDARD FEATURES

- **Fabrication**
20 gauge stainless steel. All seams tig welded and polished
- **Bowl**
Deep drawn with stamped rim to prevent spillage
- **Wall Mounting Bracket**
Offset design for added strength
- **Faucet**
4" on center wall mount faucet included on most models
- **Drain**
Stainless Steel
- **Drain with Overflow**
Stainless Steel with plastic overflow tube and inlet
- **Plumbing**
1/2" IPS hot and cold water. 1 1/2" IPS drain outlet. Install at 36" working height. 1/2" faucet supply 12" from floor. 1 1/2" drain line 23 1/4" from floor. (3 1/2" IPS drain on Model HS-20)
- **Low Lead Compliance**
Low Lead Compliant faucet options are available to meet California AB-1953 and Vermont S152 standards

OPTIONAL ACCESSORIES

- **H-100** Chrome Plated 1 1/2" IPS P-Trap
- **H-101** Deck Mount Soap Dispenser
- **H-102** Upgrade: Low Lead Wrist Handle Faucet
- **H-103** Wrist Handle Kit
- **H-104** Wall Mount Soap Dispenser
- **H-105** Wall Mount Towel Dispenser
- **H-106** One Side Splash (Specify Side)
- **H-107** Two Side Splashes
- **H-108** Stainless Steel Skirt
- **H-109** Upgrade: Low Lead Royal Series Faucet
- **H-110** Side Support Brackets
- **H-111** Soap & Towel Dispenser
- **H-200** Upgrade: Low Lead Commercial Series Faucet



APPROVED BY:

Due to our commitment to continued product improvement, specifications are subject to change without notice.

Printed in the USA

Krowne Metal Corporation

100 Haul Rd. Wayne, NJ 07470 • Toll Free: (800) 631-0442 • Fax: (973) 872-1129
sales@krowne.com • www.krowne.com • www.facebook.com/KrowneMetal • www.twitter.com/KrowneMetal

KaTom Restaurant Supply, Inc.

Rev. 1/2013
No. 2.1

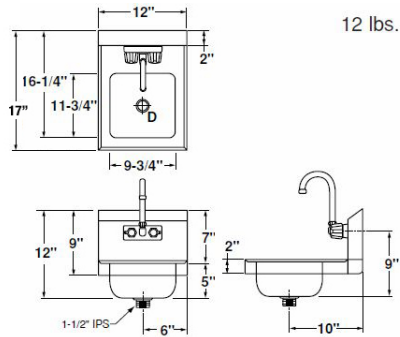
HAND SINKS

WALL MOUNT HAND SINKS

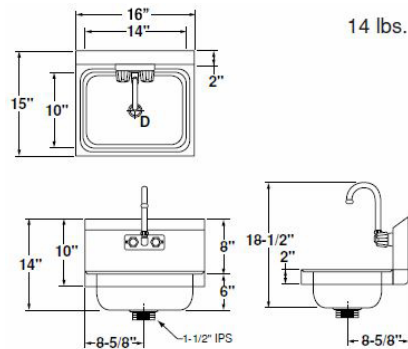
MODEL: _____ PROJECT: _____ ITEM #: _____ QTY: _____

WALL MOUNT HAND SINKS

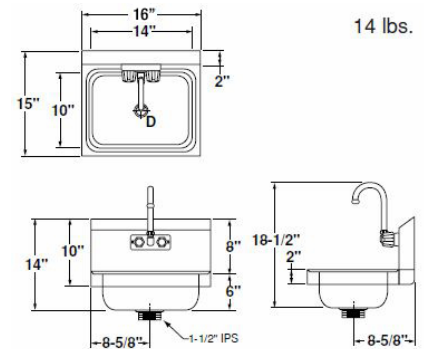
HS-9



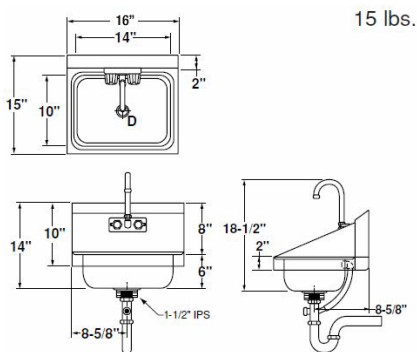
HS-2



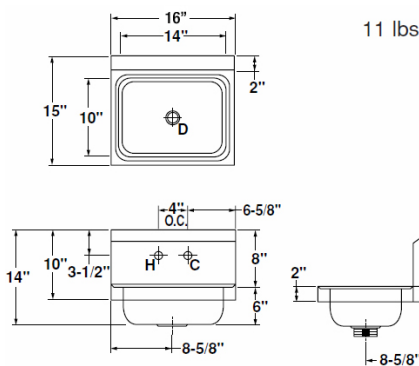
HS-4



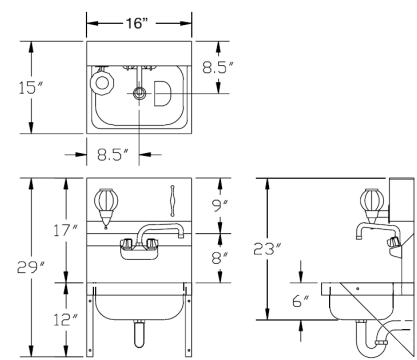
HS-5



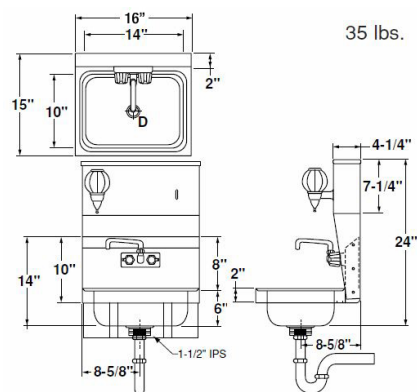
HS-6



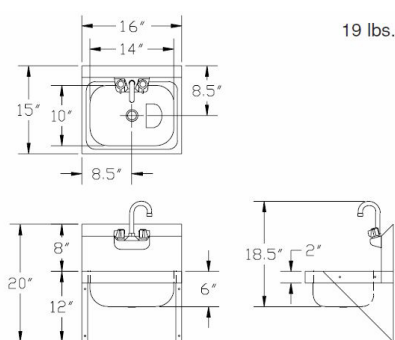
HS-7



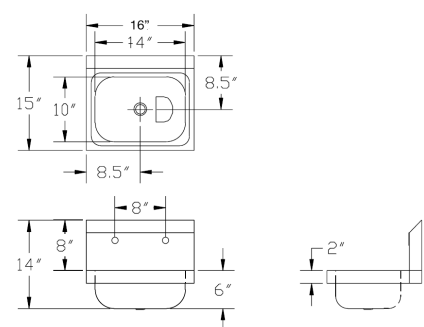
HS-8



HS-10



HS-20



CERTIFICATIONS:

Printed in the USA

APPROVED BY:

Due to our commitment to continued product improvement, specifications are subject to change without notice.

Krowne Metal Corporation

100 Haul Rd. Wayne, NJ 07470 • Toll Free: (800) 631-0442 • Fax: (973) 872-1129

sales@krowne.com • www.krowne.com • www.facebook.com/KrowneMetal • www.twitter.com/KrowneMetal

KaTom Restaurant Supply, Inc.

Rev. 1/2013

No. 2.1