

JM-1000™ Jet-Set Mini-Jet Operating Instructions

For 1-1/2" to 3" lines up to 50 ft. long



Your JM-1000 Jet-Set electric water jet is designed to give you years of trouble-free, profitable service. However, no machine is better than its operator.

Read, understand and follow all safety warnings and instructions provided with the product. Failure to follow the warnings and instructions may result in electric shock and/or serious injury. Save all warnings and instructions for future reference.

SAVE THESE INSTRUCTIONS!

General
PIPE CLEANERS




WARNING
 Read and understand operator's manual before using this machine. Failure to follow operating instructions could result in death or serious injury.

WARNING! Read and understand all instructions. Failure to follow all instructions listed below may result in electric shock, fire and/or serious personal injury. Replacement manuals are available upon request at no charge, or may be downloaded from our website, www.drainbrain.com. Instructional videos are available for download on our website, and may be ordered. If you have any questions or problems, please call General's customer service department at 412-771-6300.

SAVE THESE INSTRUCTIONS!

These instructions are intended to familiarize all personnel with the safe operation and maintenance procedures for the JM-1000.

SAFETY SYMBOLS

 This is the safety alert symbol. It is used to alert you to potential personal injury hazards. Obey all safety messages that follow this symbol to avoid possible injury or death.

DANGER

DANGER indicates a hazard with a high level of risk which, if not avoided, will result in death or serious injury.

WARNING

WARNING indicates a hazard with a medium level of risk which, if not avoided, could result in death or serious injury.

CAUTION

CAUTION indicates a hazard with a low level of risk which, if not avoided, will result in minor or moderate injury.

WARNING



Electric shock resulting in death can occur if you plug this machine into an improperly wired outlet. If the ground wire is electrified, you can be electrocuted by just touching the machine, even when the power switch is off. A ground fault circuit interrupter will not protect you in this situation. Use a UL approved tester to determine if the outlet is safe.



Do not operate power tools in explosive atmospheres, such as in the presence of flammable liquids, gases, or dust. Power tools create sparks which may ignite the dust or fumes.

Do not spray flammable liquids. Risk of explosion. Flammable liquids can create fumes which can ignite causing property damage or severe injury.



Do not direct discharge stream at people. This equipment can produce a high pressure stream of fluid that can pierce skin and its underlying tissues, leading to serious injury and possible amputation or death.



Always wear safety glasses and rubber soled, non-slip shoes. High pressure spray can cause paint chips or other particles to become airborne and fly at high speeds. Use of this safety equipment may prevent serious injury.

WARNING

This product can expose you to chemicals including lead, which is known to the State of California to cause cancer and birth defects or other reproductive harm. For more information go to www.P65Warnings.ca.gov.

GENERAL SAFETY RULES



WARNING

Read and understand all instructions. Failure to follow all instructions listed below may result in electric shock, fire, and/or serious injury.

SAVE THESE INSTRUCTIONS!

WORK AREA SAFETY

1. **All installations must comply with local codes.** Contact your electrician, plumber, utility company or the selling distributor for specific details. To comply with the National Electrical code (NFPA 70) and provide additional protection from risk of electric shock, the machines are equipped with a UL approved ground fault circuit interrupter (GFCI) power cord.
2. **Risk of explosion. Do not spray flammable liquids or operate in an area where flammable or explosive materials are used or stored.** Power tools create sparks which may ignite dust and fumes.
3. **Keep bystanders, children, and visitors away while operating machine.** Distractions can cause you to lose control.

ELECTRICAL SAFETY

1. **Grounded tools must be plugged into an outlet, properly installed and grounded in accordance with all codes and ordinances. Never remove the grounding prong or modify the plug in any way. Do not use any adapter plugs. Check with a qualified electrician if you are in doubt as to whether the outlet is properly grounded.** If the tool should electrically malfunction or break down, grounding provides a low resistance path to carry electricity away from the user.
2. **Avoid body contact with grounded surfaces such as pipes, radiators, ranges and refrigerators.** There is an increased risk of electric shock if your body is grounded.
3. **Do not expose power tools to rain or wet conditions.** Water entering a power tool will increase the risk of electric shock.
4. **When operating a power tool outside use an outdoor extension cord marked "W-A" or "W".** These cords are rated for outdoor use and reduce the risk of electric shock.
5. **Test the Ground Fault Circuit Interrupter (GFCI) provided with the power cord to insure it is operating correctly before operating machine.** Machine must have a properly functioning ground fault circuit interrupter on the power cord. GFCI reduces the risk of electric shock.
6. **Extension cords are not recommended unless they are plugged into a Ground Fault Circuit Interrupter (GFCI) found in circuit boxes or outlet receptacles.** The GFCI on the machine power cord will not prevent electric shock from the extension cords.
7. **Only use proper three-wire extension cords in good condition of no more than 50 ft. in length which have three-prong grounding plugs and three-pole receptacles which accept the tools plug.** Use of damaged, inferior, or other extension cords will not ground the tool, increases the risk of damage to the machine, electric shock, bodily injury or death.
8. **Keep all electric connections dry and off the ground.** Reduces the risk of electric shock.

9. **DO NOT touch plugs or tools with wet hands.** Reduces the risk of electric shock.

GROUND FAULT CIRCUIT INTERRUPTER (GFCI)

Your machine is equipped with a ground fault circuit interrupter, which protects you against shock if a short circuit should occur. Check that receptacle is properly grounded. Test the GFCI before each use.

1. Plug into 120-volt receptacle.
2. Push test button. Indicator light will go out and power to machine should cut off.
3. If light does not go out when test button is pushed, **DO NOT USE THE MACHINE** until proper repairs can be made.
4. To restore power after test, push reset button. With the reset button depressed, if the machine doesn't start, stops while running, or if the operator experiences a mild shock, **DO NOT USE THE MACHINE!** Tag the machine out of service and take it to a motor repair center or return it to the factory for repairs.

PERSONAL SAFETY

1. **High pressure developed by jet machines will cause personal injury. Water spray should not be pointed at any person.** High pressure spray can result in serious injury. If fluid seems to have penetrated the skin, seek emergency medical attention at once.
2. **Grip jet hose securely with both hands before starting the machine.** Failure to do so could result in injury from a whipping hose.
3. **Always wear eye protection and rubber gloves.** Safety equipment, eye safety devices, non-skid safety shoes and protective clothing must be worn when using this equipment.
4. **Stay alert, watch what you are doing and use common sense when operating a power tool. Do not use tool while tired or under the influence of drugs, alcohol, or medication.** A moment of inattention while operating power tools may result in serious personal injury.
5. **Dress properly. Do not wear loose clothing or jewelry. Contain long hair. Keep your hair, clothing, and gloves away from moving parts.** Loose clothes, jewelry, or long hair can be caught in moving parts.

SERVICE

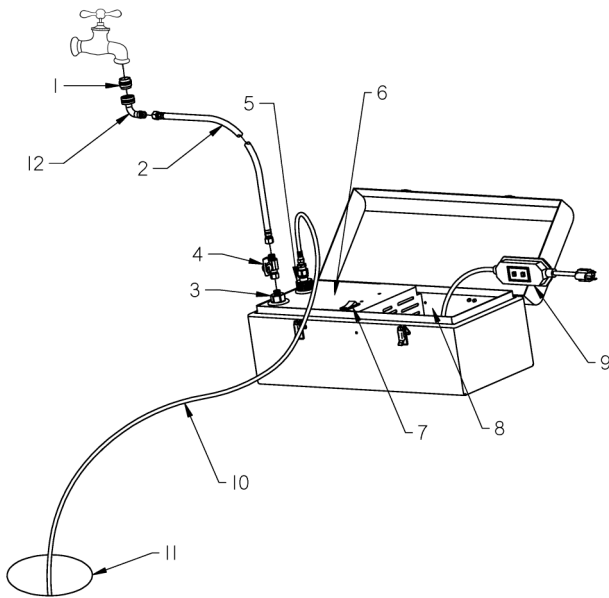
1. **Tool service must only be performed by qualified service personnel.** Service or maintenance performed by untrained personnel could result in injury and damage to the equipment.
2. **When servicing tool, use only identical replacement parts. Follow instructions in maintenance section of this manual.** Use of unauthorized parts or failure to follow maintenance instructions may cause injury or damage to equipment.

JET SAFETY

1. **Clean nozzles before each use.**
2. **Flush water supply hose to clear debris before connecting to jet.**
3. **Flush jet hose to clear debris before attaching nozzle.**
4. **Do not use hot water. Run only cool water through pump. Do not operate jet above rate pressure or above 90°F (32°C)** Operating jet above rate specifications risks damage to the pump and related components, and will void the warranty.

5. **Never run pump without water in it.** Operating the machine without water will cause the pump to fail and void the warranty.
6. **Check for worn hose and components before each use. Check that all fittings are secured before using jet.** Worn or loose fittings can cause damage to the machine and injure the operator.
7. **Protect machine and pump from freezing.** Storing or operating the jet in temperatures below freezing can damage pump, hose and other jet components. Store unit indoors or protect with anti-freeze when not in use.
8. **Do not sit or stand on carrying case.**
9. **General Wire Spring Co. will not be liable for any changes made to our standard machines or any components not purchased from General Wire Spring Co.**

JM-1000 SPECIFICATIONS



1. Threaded Faucet Adapter
2. Water Supply Hose
3. Water Inlet Adapter
4. Shut Off Valve
5. High Pressure Outlet
6. Pump & Motor (inside)
7. Power Switch
8. Storage Compartment
9. GFCI Power Cord
10. High Pressure Jet Hose
11. Drain
12. 90° Elbow

AUTOMATIC UNLOADER

The JM-1000 Mini Jet is equipped with an Automatic Unloader to protect the pump. It prevents pressure overload in the event that the nozzle is clogged or spray wand trigger is off. A water sensor in the pump will "sense" if the water is flowing and automatically turn off the power off if the water stops flowing to protect the pump from damage. The unit may shut off for 1 - 2 seconds while in operation to allow water to prime the pump. Do not run the jet for more than 5 minutes with the pump in bypass mode. Continuing to operate in bypass mode for extended periods will cause damage to the pump. Excessive temperatures will damage the pump and void the warranty.

JET HOSE

Tough high pressure jetting hose comes in a variety of lengths and diameters. The JM-1000 Mini-Jet has multiple hose options:

The Super-Flex™ 1/8" thermoplastic fiber braid hose has the flexibility to clear 1-1/2" to 3" drain lines. It's available in 30' or 50' lengths.

The optional High Performance 3/16" hose with Stainless Steel braid and Teflon core offers better cleaning power and greater durability. It has the flexibility to get through 1-1/2" to 3" drain lines and tight bends. It's available in 30' and 50' lengths.

HOSE GUIDE

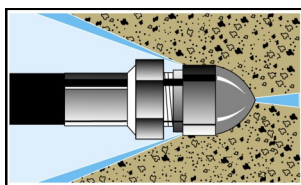
Cat. No.	Description	Dim.	For Pipe Size	For Use In
30JH00	Thermoplastic Fiber Braid Hose	30' x 1/8" ID	1-1/2" – 3"	Small lines, bathroom sinks, tight bends.
50JH00		50' x 1/8" ID		
30JH0S	Stainless Steel Braid Hose	30' x 3/16" ID		
50JH0S		50' x 3/16" ID		

Note: Use the 1/8" nozzle sets when using 3/16" hoses.

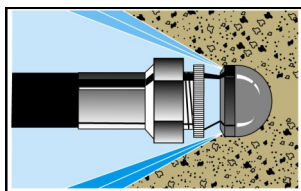
JET NOZZLES

1. A variety of jet nozzles are available for drain cleaning. Each has a different spray pattern and purpose. Some nozzles may have an orifice in the front to cut through the stoppage. All will have holes in the back to drive the hose down the line and clean the walls of the pipe. A tight spray pattern (15°) has more driving power for long runs, a wide spray pattern (30°) does a better job of cutting the grease off of the walls of the pipe. A combination of nozzles may be required to clear a line. Always turn off the machine and turn off output valve before changing nozzles.
2. Make sure the nozzle you are using matches the pump size. A 3000 psi pump requires a different nozzle orifice than a 1500 psi pump. Mismatching nozzles with pump size will either cause too little pressure, which may not clear the drain, or too much pressure, which may damage the machine.
3. Check nozzles before and after each use for clogged holes which can cause pressure to increase to dangerously high levels and damage the pump. A clogged hole can be cleared by simply using the NCT Nozzle Cleaning Tool.
4. Use the nozzle selection guide to determine what nozzle you will need for various applications.

Powerful penetrating nozzle cuts through grease and ice.



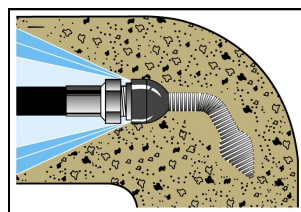
Wide spray flushing nozzle cleans inside of pipe thoroughly.



SPECIALTY NOZZLES

SPRING LEADER NOZZLE

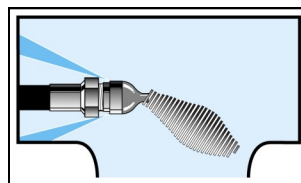
Flexible spring on the front of the nozzle helps guide hose around tight bends. Narrow spray pattern to the rear offers maximum thrust to pull the hose down the line.



Spring Leader Nozzle

DOWNHEAD NOZZLE

Flexible spring on swivel joint at the front of the nozzle guides the hose down Tees. Available for 1/8" hoses only.



Down Head Nozzle

NOZZLE SELECTION GUIDE

HOSE SIZE—1/8"	
	CAT #
15° Rear Jets w/No Forward Jet	JN-1
15° Rear Jets w/One Forward Jet	JN-2
30° Rear Jets w/No Forward Jet	JN-3
Spring Leader	JNSL-1
Down Head Nozzle (Optional)	JNDH-1

JET ASSEMBLY

- Upon arrival, inspect the shipping carton for damages. Unbox and examine all parts. Note any damage to machine or components for claims against freight carrier.
- Jet machines are meant to be used at or near the working area and under operator supervision. If machine must be located out of sight of operator, special controls may be required for proper machine operation and operator safety



OPERATION

SET-UP

1. Locate the jet near the drain line on a level surface with drainage.

Tip: Ideally, the drain line should be cleared from the downstream side; that is, from the street back toward the house. If you must clear the line from the drain toward the street, you may need to use a siphon pump to clear away excess water.
2. Check the inlet screen to make sure it's clean before each use.
3. Check that the incoming water supply is clean and free of debris. Turn the water source on for at least 15 seconds to remove any possible debris in the water before connecting hose to water inlet.
4. Connect one end of a water supply hose to the water supply and the other end to the water inlet of the jet machine. Water supply must be a minimum of 20 psi and not to exceed 100 psi. **or damage to the pump can occur.** Use only heavy duty 5/8" hose of no more than 50 ft. in length. If operated without an adequate water supply, the pump will cavitate. Cavitation causes the pump to vibrate, causing damage to the pump. **Note: Lack of water supply can lead to seal damage, causing a loss of pressure and will void the warranty to the pump.**
5. Maximum temperature from the water source should not exceed 90°F (32°C). **Using water hotter than 90°F (32°C) can cause damage to the pump and void the warranty.** If jet is being used to clear ice blockages, see instructions on Ice Blockages.
6. When using a new hose, run water through it to clean it out before attaching the nozzle.

OPERATION



NEVER POINT THE END OF THE JET HOSE AT A PERSON WHILE OPERATING.

1. Select the correct jet hose size to match the line size you are clearing. (See Hose Guide) Check all hoses for wear and damage. Tighten all connections securely. Note: If you are using a new jet hose, run water through it to flush out debris before connecting a nozzle.
2. Select the correct nozzle and attach to the end of the hose. (See Nozzle Selection Guide) Clean nozzles before and after each use.
3. Insert the jet hose 2 to 3 feet into the drain line before turning on machine.
4. Turn on the water supply valve fully to allow for maximum flow.
5. Turn ON shut-off valve at the end of the supply hose.
6. Allow water to run through the supply hose, through the jet, and out of the jet hose to purge air from system before turning on the machine.
7. Plug in GFCI power cord to proper receptacle and voltage.
8. While holding onto hose firmly to prevent hose from whipping around, turn the jet power switch on.
9. Guide the jet hose into the drain line. Do not feed the hose continuously, but rather, move the hose forward and back to allow the pressure to break up the stoppage and the water flow to flush it away. If you are clearing the line from the upstream side, this may take more time. Clearing the line from the downstream side allows debris to flow away easily.
10. The JM-1000 includes full time Pulse. The vibration generated helps to hose overcome the friction in the line and glide farther down the line. See Pulse section.
11. When the jet hose encounters a bend, it's advance will usually slow or stop. The hose has a slight bend in it from the hose reel. It may be necessary to manually feed or rotate the jet hose to work it around the bends. If the hose won't advance, put the hose in a loop and rotate it a quarter to half turn so the curve of the hose matches the pipe. It may also be necessary to pull the hose back six inches and snap it forward to hop across a gap in the pipe fitting.
12. Once you reach the stoppage, pass the hose back and forth through the section several times to ensure the line is thoroughly cleared. You may also switch nozzles to a wide spray or rotary (optional) nozzle for wall to wall cleaning action.

PULSE

Pulsation makes the hose vibrate, helping the jet go longer distances and around tight bends easier. Pulse causes the water to burst from the nozzle hundreds of times per second. Pulse is most effective in the 1/8" hose.

SHUT DOWN INSTRUCTIONS

After drain cleaning or spray washing is completed, run clear water through the system. Turn off water supply and drain as much water from the pump as possible. Remove water supply hose from inlet. If you are in a cold climate, see Freeze Protection section.

SPECIAL APPLICATIONS

ICE BLOCKAGES

High pressure water can be used to clear an ice blockage. A 3000 psi gas jet can clear a 4" line at an approximate rate of one foot per minute. The smaller, electric jet will take twice as long. Ambient air temperature will effect these times. Use a 15° nozzle with a forward jet. DO NOT allow the incoming water supply to exceed 90°F (32°C) or it could cause damage to the pump. Remember to follow the cold weather precautions found in the Freeze Protection section.

FREEZE PROTECTION

To protect your machine from severe damage caused by water freezing inside the components, it is important to winterize it whenever it is subjected to freezing temperatures.

The best way to protect the system is to keep it out of the cold. Barring that, the next best way is to flush the system with anti-freeze. To do so, simply attach a short garden hose (not to exceed four feet) to inlet on the jet and put other end into the anti-freeze container. Be sure to remove the nozzle from the hose. Turn the machine on to draw anti-freeze into the system. When anti-freeze flows out of the end of the hose, turn the machine off. When preparing to operate equipment for the next job, remove the anti-freeze. To do so, reconnect water source, turn jet on and direct flow of anti-freeze back into container. Be careful not to dilute anti-freeze with incoming water supply. Anti-freeze, if kept relatively undiluted, can be used again and again.

Hoses can also be protected from freezing by using compressed air to clear them of residual water. Remember to remove the nozzle from the jet hose.

MAINTENANCE



DISCONNECT JETTER FROM POWER SOURCE BEFORE PERFORMING MAINTENANCE OR MAKING ANY ADJUSTMENTS.

Regular inspection is the key to preventing breakdowns and prolonging the life of the equipment. Follow this simple procedure religiously.

DAILY

- Check INLET STRAINER for debris before each use.
- Check that the jet nozzles are not clogged or worn out.
- Clean nozzles between each use.

WEEKLY

- Check the pressure hose for wear and damage. Damaged hose can be repaired at a local service dealer, or by your equipment dealer.

TROUBLE SHOOTING GUIDE		
Problem	Probable Cause	Solution
Low pressure.	Worn, clogged, or oversized nozzle.	Clean or replace worn nozzle. Check nozzle size.
	Clogged water inlet strainer.	Clean or replace strainers.
	Inadequate water supply.	Make certain water supply valve is on fully. Make certain water supply hose is at least 5/8" in diameter, in good condition, with no kinks or damage, and is not longer than 50 ft.
	Worn or damaged pump.	Replace pump.
	Dirt or foreign particles in valve assembly.	Remove any dirt particles.
	Air leak in inlet plumbing.	Locate air leak. Re-seal connection or replace damaged port.
Rough operation with loss of pressure.	Restricted inlet plumbing or air leak in inlet plumbing.	Repair clogged inlet fittings. Check supply hose and ensure adequate water supply.
	Damaged pump.	Replace any damaged pump parts and clean out any foreign particles.
	Clogged nozzle.	Clean or replace nozzle.
Water leakage at intake.	Worn pump.	Repair or replace pump.
	Inadequate water supply to pump, creating a vacuum lock.	Ensure adequate tap water supply. Clear inlet filter.
Short pump life.	Pump damaged by chemicals.	Repair or replace pump. Do not pump chemicals.
	Running pump without water supply.	Do not allow jet to be run without proper water supply.
	Hot water in pump.	Do not run in bypass for more than 5 minutes. Do not let water supply exceed 90°F (32°C).
Irregular spray pattern.	Worn or partially clogged nozzle.	Clean or replace nozzle.
Pump cycles.	Fitting leaking downstream.	Tighten/replace fitting.
	Clogged nozzle.	Clean or replace nozzle.

General Wire Spring Co.
1101 Thompson Avenue
McKees Rocks, PA 15136
412-771-6300 www.drainbrain.com