



SOUTHLAND TOOL MFG. INC.



Building Innovative Tools for Municipalities

PRODUCT CATALOG 2019_{v12}

SOUTHLAND TOOL MFG. INC.

Building Innovative Tools for Municipalities



Hydro-Excavation and Vacuum tools



Scoops, Choppers



Grabbers



Catch Basin Spoons



Sewer Hose guides



Insert Nozzle Guider



Debris Catchers



Hand-Clams 6-25'



Extend-A-Claws, Telescopic



Nozzle Extensions



Rodding Tools



Telescopic Steel Grabbers



Proofer



Football Style
Manhole Hooks



Fiberglass Pole sets, Foam Filled



Finned Style



Lateral Rod Sets



Catch Basin Spoons



Calcium Cutters



Lateral Hyd. kits



Tap Cutters



Speciality Saws



Magnetic Manhole Lifter



Replacement Motors



Main Line Root Cutter Kits



Southland Tool Mfg. Inc.

SEWER EQUIPMENT GUIDE



PUMA Manhole Extraction Equipment

Debris Baskets, Grit Catchers	Page 1
Sewer Scoops, Choppers, Hose Grabbers, Pronged Grabbers, Spoons, Shovels	Page 2,3,4
Fiberglass Poles Sets, Telescopic Poles	Page 5
Foam Filled Poles, Aluminum Poles, Pole Grabbers Pole Mirrors, Pole Carriers	Page 6
Telescopic Grabbers, Steel Grabbers, Gulley Grabbers	Page 7

Jet & Vacuum Tools

Puma Grabber, Handi-Clams, Jetting and Vacuum Machine Accessories, Hose Guides, Rollers	Page 8,9
Hydro-Excavation Tools, Vac-Traps, Crowns, Drop Manhole Bridges	Page 10,11,12
Industrial Vacuum Equipment	Page 13,14
Hydraulic Root Cutters, Motors Kits, Skids	Page 15,16,17,18,19,20
Diamond Tap Cutters, Arrow Cutters, PVC Cutters, Special Saws, Carbide Saws	Page 21
Nozzle Extensions Finned, 6 Wire Skid, 4 Wire Skid, Football Style, Proofers	Page 22,23

Sewer Rodding Tools & Accessories

Sectional Sewer Rods	Page 24
Rodding Tools, Accessories	Page 25
Rod Cleaning Tools, Corkscrews, Augers	Page 26
Saws For Rodding	Page 27
Saw Blades Only, Concave, Flat, Spiral, Colorado	Page 28
Porcupines, Brushes, 3 Blade Cutters	Page 29
Power Drive Rod Turning Machine, Manhole Guides Set Up, Carry All Trailer	Page 30
Continuous Rods Guide Tools and Accessories	Page 31
Continuous Rod, Loading Rack, Rods and Tool Adapters	Page 32
No. 5 Plumbing Rods and Tools	Page 33
"B" Rods And Tools, Coiled Spring Items, Ball Valves, 90° Swivels	Page 34
Manhole Hooks, Sand Traps, Insert Nozzle Guide, Magnet	Page 35
Manhole Safety Covers (Big Red), Manhole Lifters	Page 36

SOUTHLAND TOOL MFG. INC.

Innovative Tools for Municipalities



PUMA TOOLS

DEBRIS BASKETS, CATCHERS, SCOOPS, GRABBERS

FLAT TRAPS FOR SKIMMING ALONG FLAT AREAS

FT-6	6"	FLAT TRAP BASKET 6" WIDE X 6" HIGH FOR QUICK CONNECT FIBERGLASS POLES
FT-8	8"	FLAT TRAP BASKET 8" WIDE X 6" HIGH FOR QUICK CONNECT FIBERGLASS POLES
FT-10	10"	FLAT TRAP BASKET 10" WIDE X 6" HIGH FOR QUICK CONNECT FIBERGLASS POLES
FT-12	12"	FLAT TRAP BASKET 12" WIDE X 8" HIGH FOR QUICK CONNECT FIBERGLASS POLES
FT-15	15"	FLAT TRAP BASKET 15" WIDE X 8" HIGH FOR QUICK CONNECT FIBERGLASS POLES

DEBRIS BASKETS TO USE WITH FIBERGLASS POLE

DB-6	6"	DEBRIS BASKET 6" FOR QUICK CONNECT FIBERGLASS POLES
DB-8	8"	DEBRIS BASKET 8" FOR QUICK CONNECT FIBERGLASS POLES
DB-10	10"	DEBRIS BASKET 10" FOR QUICK CONNECT FIBERGLASS POLES
DB-12	12"	DEBRIS BASKET 12" FOR QUICK CONNECT FIBERGLASS POLES
DB-15	15"	DEBRIS BASKET 15" FOR QUICK CONNECT FIBERGLASS POLES
DB-18	18"	DEBRIS BASKET 18" FOR QUICK CONNECT FIBERGLASS POLES
DB-24	24"	DEBRIS BASKET 19" FOR QUICK CONNECT FIBERGLASS POLES

DEBRIS GRIT CATCHERS TO USE WITH FIBERGLASS POLES

DB-6S	6"	DEBRIS GRIT CATCHER 6" FOR QUICK CONNECT FIBERGLASS POLES
DB-8S	8"	DEBRIS GRIT CATCHER 8" FOR QUICK CONNECT FIBERGLASS POLES
DB-10S	10"	DEBRIS GRIT CATCHER 10" FOR QUICK CONNECT FIBERGLASS POLES
DB-12S	12"	DEBRIS GRIT CATCHER 12" FOR QUICK CONNECT FIBERGLASS POLES
DB-15S	15"	DEBRIS GRIT CATCHER 15" FOR QUICK CONNECT FIBERGLASS POLES
DB-18S	18"	DEBRIS GRIT CATCHER 18" FOR QUICK CONNECT FIBERGLASS POLES
DB-24S	24"	DEBRIS GRIT CATCHER 19" FOR QUICK CONNECT FIBERGLASS POLES

Includes Solid Half Bottom And Back To Catch The Grit

DEBRIS BASKET WITH 25' ROPE

DBR-6	6"	DEBRIS BASKET 6" WITH ROPE
DBR-8	8"	DEBRIS BASKET 8" WITH ROPE
DBR-10	10"	DEBRIS BASKET 10" WITH ROPE
DBR-12	12"	DEBRIS BASKET 12" WITH ROPE
DBR-15	15"	DEBRIS BASKET 15" WITH ROPE
DBR-18	18"	DEBRIS BASKET 18" WITH ROPE
DBR-24	24"	DEBRIS BASKET 19" WITH ROPE

DEBRIS GRIT CATCHER WITH 25' ROPE

DBR-6S	6"	DEBRIS GRIT CATCHER 6" WITH ROPE
DBR-8S	8"	DEBRIS GRIT CATCHER 8" WITH ROPE
DBR-10S	10"	DEBRIS GRIT CATCHER 10" WITH ROPE
DBR-12S	12"	DEBRIS GRIT CATCHER 12" WITH ROPE
DBR-15S	15"	DEBRIS GRIT CATCHER 15" WITH ROPE
DBR-18S	18"	DEBRIS GRIT CATCHER 18" WITH ROPE
DBR-24S	24"	DEBRIS GRIT CATCHER 24" WITH ROPE

Includes Solid Half Bottom And Back To Catch The Grit

DEBRIS CYLINDER

DC-6	6"	DEBRIS CYLINDER FOR 6" PIPE
DC-8	8"	DEBRIS CYLINDER FOR 8" PIPE
DC-10	10"	DEBRIS CYLINDER FOR 10" PIPE
DC-12	12"	DEBRIS CYLINDER FOR 12" PIPE

FA-1	DEBRIS BASKET POLE ADAPTER
------	----------------------------



*All tools come standard with Quick-Connect Male Ends. Threaded ends for our Threaded poles available
(Add "T" to end of part #)*

ALUMINUM DEBRIS TRAPS, LIGHT AND NON-CORROSIVE ALUMINUM

ADT-6	6"	ALUMINUM DEBRIS/SAND TRAP FOR USE WITH FIBERGLASS POLES
ADT-8	8"	ALUMINUM DEBRIS/SAND TRAP FOR USE WITH FIBERGLASS POLES
ADT-10	10"	ALUMINUM DEBRIS/SAND TRAP FOR USE WITH FIBERGLASS POLES
ADT-12	12"	ALUMINUM DEBRIS/SAND TRAP FOR USE WITH FIBERGLASS POLES
ADT-15	15"	ALUMINUM DEBRIS/SAND TRAP FOR USE WITH FIBERGLASS POLES
ADT-18	18"	ALUMINUM DEBRIS/SAND TRAP FOR USE WITH FIBERGLASS POLES



SCOOPAS-STRONG HEAVY DUTY MADE TO FIT IN SEWER INVERT TO CATCH DEBRIS, ZINC PLATED

SC-4	4"	SCOOPA FOR FIBERGLASS POLES
SC-6	6"	SCOOPA FOR FIBERGLASS POLES
SC-8	8"	SCOOPA FOR FIBERGLASS POLES
SC-10	10"	SCOOPA FOR FIBERGLASS POLES
SC-12	12"	SCOOPA FOR FIBERGLASS POLES



SCOOPA SCREENS KEEPS DEBRIS FLOW FROM SPILLING OVER BACK OF TOOL. GOOD FOR CATCHING ROOTS. ZINC PLATED

SCCS-6	6"	SCOOPA SCREEN FOR FIBERGLASS POLES
SCCS-8	8"	SCOOPA SCREEN FOR FIBERGLASS POLES
SCCS-10	10"	SCOOPA SCREEN FOR FIBERGLASS POLES
SCCS-12	12"	SCOOPA SCREEN FOR FIBERGLASS POLES



CHOPPER

LC-9	6"	CURVED CHOPPER FOR FIBERGLASS POLES. GREASE LOG CHOPPER NOW WITH CURVED SIDE TO BETTER PUSH MATERIAL. THESE CHOPPERS ARE VERY SHARP AND CAN CHOP UP WOOD AND GREASE OR MUD OR ANYTHING YOU WANT. ZINC PLATED
------	----	--



SEWER HOSE GRABBERS

HG-1	8" WIDE IMPROVED HOSE GRABBER FOR FIBERGLASS POLES, ANGLE ENDS TO ALLOW EASY ENTRY FOR HOSE. THIS TOOL IS GREAT FOR PUSHING DOWN ON THE HOSE AS THE NOZZLE COMES OUT OF LINE. KEEPS IT HORIZONTAL. 1/4" THICK STEEL. ZINC PLATED.
------	---



SHT-1	7" WIDE OPPOSITE HOSE GRABBER, OPPOSING C HOOKS GRAB HOSE IN MIDDLE AND TWIST FOR EASY GRABBING. ALLOWS YOU TO MOVE THE HOSE FROM SIDE TO SIDE OR PUSH ON IT IN ANY DIRECTION. MADE OF STRONG 3/8" SPRING STEEL, ZINC PLATED.
-------	---



All tools come standard with Quick-Connect Ends. Threaded ends for our poles available (Add "T" to end of part # and add \$10.00)

DEBRIS GRABBERS, HOOKS, CLAWS, SHOVELS, SPOONS, MAGNETS

4 PRONGED DEBRIS GRABBER

4PG-1 8" WIDE 4 PRONGED DEBRIS GRABBER – PULLS OUT ROOTS, ROCKS, DEBRIS FROM MANHOLE. ZINC PLATED



3 PRONGED DEBRIS GRABBER

3PG-1 6" WIDE 3 PRONGED DEBRIS GRABBER. SAME AS ABOVE BUT 3 PRONGS. EACH PRONG IS MADE OF STRONG SPRING STEEL. THESE ARE SHARP AND WILL PUNCTURE A CAN OR GRAB FIBROUS ROOTS. ZINC PLATED



BITZ RAKE

BITZ-R 12" LONG BITZ RAKE. GREAT FOR GETTING MATERIAL OUT OF INVERTS AND CAN BE INSERTED INTO PIPE FOR CATCHING HANGING MATERIAL. ZINC PLATED



GRABBER CLAW

CRW-1 CLAW FOR ATTACHING TO POLES. INCLUDES CLAW, ROPE, PVC STAY, ONE-WAY CLEAT, HARDWARE AND ALL YOU NEED TO CONNECT TO OUR FIBERGLASS POLES. EXTENDS TO 24' OR MORE DEPENDING ON THE LENGTH YOU NEED. JUST ADD MORE POLES



RAKES

SR3-1 3 PRONGED 90° RAKE. GREAT FOR GRABBING ROOTS FROM SEWER OR STORM DRAINS. FITS OUR FIBERGLASS POLES AND IS MADE OF HARD SPRING STEEL WITH SHARPENED, POINTED ENDS. ZINC DIPPED FOR CORROSION RESISTANCE.



SPOONS

PS-1 9" DIA. ROUNDED CATCH BASIN SPOON. CONNECTS TO ALL OUR POLES THIS IS A 9" DIAMETER STEEL SPOON THAT WILL SCOOP OUT LARGER AMOUNTS OF MUC AND DEBRIS. FITS ANY LENGTHS OF FIBERGLASS POLES. ALSO USED ON OUR WOOD HANDLED SEWER SPOONS, ZINC PLATED



WSS-1 9" DIA. WESTERN STYLE SPOONS ARE GREAT WITH NICE STRONG BENT ANGLED FLAT PART AND TURNED UP EDGES THAT IS IDEAL FOR CLEANING OUT THOSE HARD TO GET AREAS. ALSO USED ON OUR WOOD HANDLE SPOONS (SEE PAGE 7) ZINC PLATED



HOOK

GH-1 GRAPPLING HOOK WITH 25' OF POLY ROPE, 3 PRONGS. GOOD FOR RETRIEVING LARGE DEBRIS OR SCALING FORTRESS WALLS. MADE OF 3/8" DIA. SPRING STEEL THAT WILL HOLD UP TO THE JOB. LIFT OVER 200 lbs. ZINC DIPPED FOR CORROSION RESISTANCE.



*All tools come standard with Quick-Connect Ends. Threaded ends for our poles available
(Add "T" to end of part # and add \$10.00)*

CAMERA HOOKS

CAM-1 CAMERA GAFFING HOOK. TESTED TO 200 LBS (**LEFT**)
CAM-2 SMALL DIAMETER CAMERA GAFFING HOOK 3" (**RIGHT**)
Made of strong spring steel and cold bent to the right hook design. Connects to our fiberglass poles. Red ball on end is removable. Zinc Plated



SSCAM-1S 2" SIDE TO SIDE CAMERA SWIVEL HOOK. Easy to turn to get around harness or bridle this camera hook articulates so you can get the hook into any position you want by moving and turning your pole.



ECL-1 ENVIROTYPE CAMERA LIFTING HOOK WITH SIDE PICK UP BARS AND POLE ADAPTER. This will lift your envirosight camera easily. Now you can have more control when grabbing this type of rover camera. Zinc Plated



SEWER MAGNET

SMAG-1 SEWER MAGNET, 100LB CAPACITY, AN OVERALL METAL RETRIEVER. Great tool for retrieving that lost tool, can lift valve. Covers come with steel protective plate to protect magnet. Zinc Plated



SHOVELS

SIS-1 INVERT SHOVEL ATTACHMENT - Attaches to all our pole systems, great for digging, moving debris in invert. Nice rounded side makes it perfect to fit in an 8" invert. Black Steel



FS-IT FLAT SHOVEL ATTACHMENT - Attaches to all our pole systems, this flat shovel is great for scraping well sides and chopping up floating debris. Black Steel



CS-IT SPADE ROUNDED SHOVEL. For use with fiberglass poles good all around shovel. Works well in areas where you need to slide and puncture debris. Black Steel



PIKE POLE ATTACHMENT

PP-125 PIKE POLE ATTACHMENT FOR POLES. Tough like firefighters the pike pole attachment is made of cast steel. Painted Black



**All tools come standard with Quick-Connect Ends. Threaded ends for our poles available
(Add "T" to end of part # and add \$10.00)**

POLE SETS FOR PUMA LINE OF TOOLS

FIBERGLASS POLES STANDARD WEIGHT ORANGE QUICK CONNECT

STD-3	3'	SINGLE MALE X FEMALE POLE
STD-6	6'	SINGLE MALE X FEMALE POLE
STD-18	18'	SET OF 2 MALE X FEMALE POLE AND ONE RUBBER END POLE
STD-21	21'	SET OF 3ea. 6' AND 1ea. 3' MALE X FEMALE POLE
STD-24	24'	SET OF 3 MALE X FEMALE POLE AND ONE RUBBER END POLE
STD-6R	6'	SINGLE 6' FEMALE X RUBBER END POLE
STD-12R	12'	SINGLE 12' POLE WITH FEMALE END X RUBBER END POLE



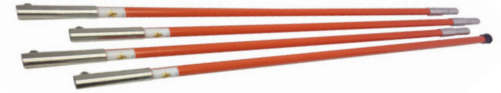
TELESCOPIC FIBERGLASS POLES

EXT-1	8'-16'	FIBERGLASS EXTENSION POLE 8'-16'
EXT-2	8'-24'	FIBERGLASS EXTENSION POLE 8'-24'
EXT-3	6'-12'	FIBERGLASS EXTENSION POLE 6'-12'



STEEL REINFORCED FIBERGLASS POLES (SUPER STIFF) QUICK CONNECT

STD-3ST	3'	SINGLE MALE X FEMALE POLE
STD-6ST	6'	SINGLE MALE X FEMALE POLE
STD-21ST	21'	SET OF 3ea. 6' AND 1ea. 3' MALE X FEMALE POLES
STD-24ST	24'	SET OF 3 MALE X FEMALE POLES AND ONE RUBBER END POLE



FOAM FILLED POLES FOR EXTRA STRENGTH AND SAFETY QUICK CONNECT

FF-3	3'	SINGLE MALE X FEMALE POLE
FF-6	6'	SINGLE MALE X FEMALE POLE
FF-8	8'	SINGLE 8' MALE AND FEMALE
FF-21	21'	SET OF 3ea. 6' AND 1ea. 3' MALE X FEMALE POLES
FF-24	24'	SET OF 3 MALE X FEMALE POLES AND ONE RUBBER END POLE
FF-6R	6'	SINGLE 6' FEMALE X RUBBER END POLE



THREADED ENDS – FIBERGLASS POLES STANDARD WEIGHT ORANGE

STD-3T	3'	SINGLE MALE X FEMALE POLE
STD-6T	6'	SINGLE MALE X FEMALE POLE
STD-18T	18'	SET OF 2 MALE X FEMALE POLES AND ONE END RUBBER POLE
STD-21T	21'	SET OF 3ea. 6' AND 1ea. 3' MALE X FEMALE POLE
STD-24T	24'	SET OF 3 MALE X FEMALE POLES AND ONE RUBBER END POLE
STD-6RT	6'	SINGLE 6' MALE X RUBBER END POLE
STD-12RT	12'	SINGLE 12' POLE WITH MALE END X RUBBER END
EXT-1T	7'-14'	FIBERGLASS EXTENSION POLE 7'-14'



THREADED ENDS – STEEL REINFORCED FIBERGLASS POLES (STRONGEST POLE AVAILABLE OUT THERE)

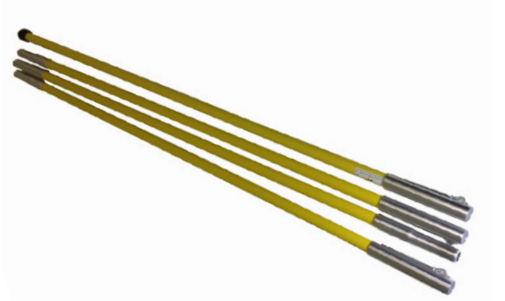
STD-3STT	3'	SINGLE MALE X FEMALE POLE
STD-6STT	6'	SINGLE MALE X FEMALE POLE
STD-18STT	18'	SET OF 2 MALE X FEMALE POLE & 1 POLE MALE X RUBBER END
STD-21STT	21'	SET OF 3ea. 6' AND 1ea. 3' MALE X FEMALE POLE
STD-24STT	24'	SET OF 3 MALE X FEMALE POLE AND ONE RUBBER END POLE



THREADED POLES CONT...

THREADED ENDS – FOAM FILLED POLES FOR EXTRA STRENGTH

FF-3T	3'	SINGLE MALE X FEMALE POLE
FF-6T	6'	SINGLE MALE X FEMALE POLE
FF-21T	21'	SET OF 3ea. 6' AND 1ea. 3' MALE X FEMALE POLES
FF-24T	24'	SET OF 3 MALE X FEMALE POLES AND ONE RUBBER END POLE
FF-6RT	6'	SINGLE 6' FEMALE X RUBBER END POLE



ALUMINUM POLE WITH ALUMINUM QUICK CONNECT ENDS

AP-6	6'	ALUMINUM POLE WITH ALUMINUM QUICK CONNECTS ENDS MXF
AP-12	12'	SET OF 2 MALE X FEMALE ALUMINUM POLES, 12' TOTAL
AP-18	18'	SET OF 3 MALE X FEMALE ALUMINUM POLES, 18' TOTAL
AP-24	24'	SET OF 4 MALE X FEMALE ALUMINUM POLES, 24' TOTAL



CUES® TYPE FIBERGLASS POLE

CTP-5	5'	CUES® TYPE 5' POLE-PUSH BUTTON TYPE
CTP-5FF	5'	CUES® TYPE FOAM FILLED POLE - PUSH BUTTON TYPE
CTP-FS	5'	CUES® TYPE FOAM STANDARD POLE WITH STEEL FEMALE
CTP-5FS	5'	CUES® TYPE FOAM FILLED POLE WITH FEMALE STEEL ENDS



REAR DOOR POLE CARRIERS

FBP-4 **4 PIECE** FIBERGLASS POLE BRACKET. Comes with bottom pegged rest and two brackets with tight stays to keep poles steady. All Aluminum Mounts to back door.

FBP-6 **6 PIECE** FIBERGLASS POLE BRACKET. Comes with bottom pegged rest and two brackets with grip tight stays to keep poles steady. All Aluminum mounts to back door.



SINGLE POLE CARRIERS

SDS-1 HIGH QUALITY CAST DESIGN FOR CARRYING A SINGLE POLE. One side is a closed circle.

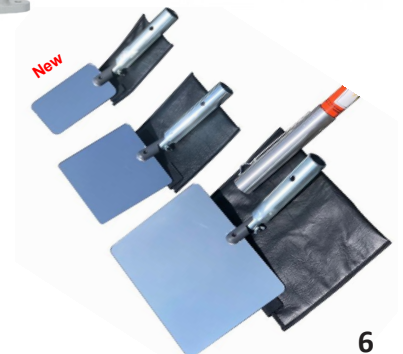
SDS-2 DOUBLE CARRIER WITH RUBBER GASKET TO PROTECT THE POLE. The other side is an open half-moon with a pull-tight and locking rubber strap to keep poles in place.



POLE INSPECTION MIRRORS

All come with Male Quick Connect End to fit our poles

IMR-1	4" X 6"	SEWER MIRROR COMPLETE WITH PADDED COVER WITH VELCRO
IMR-2	6" X 6"	SEWER MIRROR COMPLETE WITH PADDED COVER WITH VELCRO
IMR-3	8" X 10"	SEWER MIRROR COMPLETE WITH PADDED COVER WITH VELCRO



CLAW TELESCOPE POLE GRABBERS

- GWCT-12 12' LONG GRABBER WITH SPRING LOADED CLAW ACTION TELESCOPIC
FIBERGLASS POLE EXTENDS FROM 6'-12'
- GWCT-15 15' FIBERGLASS POLE EXTENDS FROM 7'-15'
- GWCT-16 16' FIBERGLASS POLE EXTENDS FROM 8'-16'
- GWCT-24 24' FIBERGLASS POLE EXTENDS FROM 8'-24'



STEEL DEBRIS GRABBER

- SGP-15 15' LONG STEEL TELESCOPIC GRABBER PRONG EXTENDS FROM 5' TO 15'
- SGP-21 21' LONG STEEL TELESCOPIC GRABBER PRONG EXTENDS FROM 7' TO 21'
- SGP-24 24' LONG STEEL TELESCOPIC GRABBER PRONG EXTENDS FROM 8' TO 24'



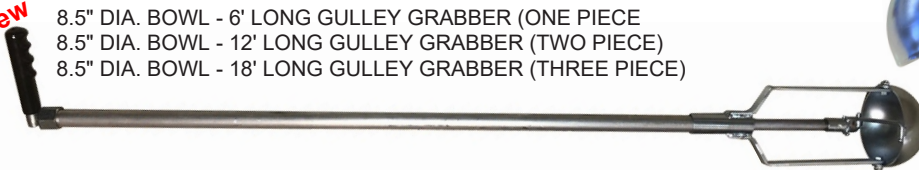
CONFINED SPACE GULLEY GRABBER

GULLEY GRABBER is great for removing mud, silt, leaves, stones or any other object that might have fallen down a hole. The hinged bowl opens wide and within its own circumference so you can get at items in restricted areas, the bowl is water tight. It comes in 3 sizes: 5.5", 6.5" and 8.5" Available in lengths, 6' 12' or 18'. if you buy a 18' footer then you can use it as a 6' or 12'. All break down and are "UPS'ABLE"

- GG-5-6 5.5" BOWL - 6' LONG GULLEY GRABBER (ONE PIECE)
- GG-5-12 5.5" BOWL - 12' LONG GULLEY GRABBER (TWO PIECE)
- GG-5-18 5.5" BOWL - 18' LONG GULLEY GRABBER (THREE PIECE)

- GG-6-6 6.5" BOWL - 6' LONG GULLEY GRABBER (ONE PIECE)
- GG-6-12 6.5" BOWL - 12' LONG GULLEY GRABBER (TWO PIECE)
- GG-6-18 6.5" BOWL - 18' LONG GULLEY GRABBER (THREE PIECE)

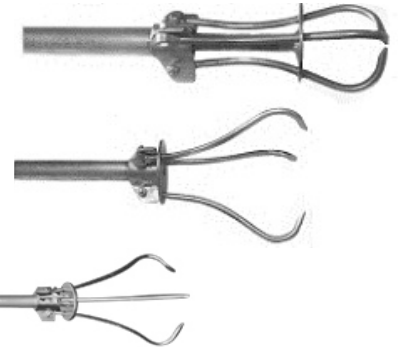
- New** GG-8-6 8.5" DIA. BOWL - 6' LONG GULLEY GRABBER (ONE PIECE)
- GG-8-12 8.5" DIA. BOWL - 12' LONG GULLEY GRABBER (TWO PIECE)
- GG-8-18 8.5" DIA. BOWL - 18' LONG GULLEY GRABBER (THREE PIECE)



PUMA GRABBER

The Puma Grabber is a one of a kind tool on the market. It allows you to pick up debris in small confined spaces in catch basins and pits and wet walls and more from the surface level. The lower end has 3 opposing sharpened prongs that are actuated by the top handle. Once you open the prongs, you then can push down on top handle that closes the prongs and grabs. Raising the tool, the weight of the item in the prongs, keeps the prongs closed. Knockdown so it's shipped parcel.

PMA-6S	6' LONG	PUMA GRABBER 6' LONG WITH 8" JAWS (1 PIECE)
PMA-8S	8' LONG	PUMA GRABBER 6' LONG WITH 8" JAWS (1 PIECE)
PMA-10S	10' LONG	PUMA GRABBER 10' LONG WITH 8" JAWS (2 PIECE)
PMA-12S	12' LONG	PUMA GRABBER 12' LONG WITH 8" JAWS (2 PIECE)
PMA-15S	15' LONG	PUMA GRABBER 15' LONG WITH 8" JAWS (3 PIECE)
PMA-18S	18' LONG	PUMA GRABBER 18' LONG WITH 8" JAWS (3 PIECE)
PMA-20S	20' LONG	PUMA GRABBER 20' LONG WITH 8" JAWS (4 PIECE)



HANDI-CLAMS ONE PIECE OR KNOCKDOWN MODELS - 12" -16" BUCKETS

The HANDI-CLAM is one of the most popular tools on the market for sewer/catch basin/pit cleaning. The lower end has 2 clam shell shaped buckets that are actuated by the top handle and close tight when you lock the handle. The big advantage is that we make these knockdown models so you do not have to pay high truck freight rates for a HANDI-CLAM over 8ft long. So when you buy a 12' clam it comes in two sections that are easily put together by the enclosed instructions. Plus you can use the clam as a 6 footer or 17 footer.

SHC-6	6'	HANDY CLAM 6' LONG WITH SMALL 12" BUCKET (ONE PIECE)
SHC-8	8'	HANDY CLAM 8' LONG WITH SMALL 12" BUCKET (TWO PIECE)
SHC-10	10'	HANDY CLAM 10' LONG WITH SMALL 12" BUCKET (TWO PIECE)
SHC-12	12'	HANDY CLAM 12' LONG WITH SMALL 12" BUCKET (TWO PIECE)
SHC-16	16'	HANDY CLAM 16' LONG WITH SMALL 12" BUCKET (THREE PIECE)
SHC-18	18'	HANDY CLAM 18' LONG WITH SMALL 12" BUCKET (THREE PIECE)
SHC-20	20'	HANDY CLAM 20' LONG WITH SMALL 12" BUCKET (FOUR PIECE)
SHC-25	25'	HANDY CLAM 25' LONG WITH SMALL 12" BUCKET (FOUR PIECE)

ALSO AVAILABLE WITH 16" BUCKET. ADD "6" TO PART NUMBER AND THE PRICE IS THE SAME.



These can be ordered in a one piece configuration also. (EXPENSIVE TO SHIP OVER 8') and you must specify at time of order that you want a single piece clam. Extra packing and shipping charges apply for truck shipments.

CATCH BASIN SPOON ASSEMBLIES WITH FIBERGLASS POLES

FS-6	6'	CATCH BASIN SPOON WITH ONE 6' FIBERGLASS POLE
FS-12	12'	CATCH BASIN SPOON WITH 12' FIBERGLASS POLES (2 POLES)
FS-18	18'	CATCH BASIN SPOON WITH 18' FIBERGLASS POLES (2 POLES)

WOOD HANDLE SPOONS

PS-6	6'	1.5" THICK ASH HANDLE AND CATCH BASIN SPOON (ONE PIECE)
PS-8	8'	1.5" THICK ASH HANDLE AND CATCH BASIN SPOON (ONE PIECE)
PS-10	10'	1.5" THICK ASH HANDLE AND CATCH BASIN SPOON (ONE PIECE)
PS-102	10'	1.5" THICK ASH HANDLE AND CATCH BASIN SPOON (TWO PIECE)
PS-122	12'	1.5" THICK ASH HANDLE AND CATCH BASIN SPOON (TWO PIECE)
PS-162	16'	1.5" THICK ASH HANDLE AND CATCH BASIN SPOON (TWO PIECE)
PS-183	18'	1.5" THICK ASH HANDLE AND CATCH BASIN SPOON (THREE PIECE)
PS-203	20'	1.5" THICK ASH HANDLE AND CATCH BASIN SPOON (THREE PIECE)

OSH STYLE "WESTERN PATTERN" WOOD HANDLE SPOONS

PS-60S	6'	WESTERN PADDLE SPOON WITH 1.5" THICK ASH HANDLE (ONE PIECE)
PS-80S	8'	WESTERN PADDLE SPOON WITH 1.5" THICK ASH HANDLE (ONE PIECE)
PS-100S	10'	WESTERN PADDLE SPOON WITH 1.5" THICK ASH HANDLE (ONE PIECE)
PS-1020S	10'	WESTERN PADDLE SPOON WITH 1.5" THICK ASH HANDLE (TWO PIECE)
PS-120S	12'	WESTERN PADDLE SPOON WITH 1.5" THICK ASH HANDLE (ONE PIECE)
PS-1220S	12'	WESTERN PADDLE SPOON WITH 1.5" THICK ASH HANDLE (TWO PIECE)
PS-1620S	16'	WESTERN PADDLE SPOON WITH 1.5" THICK ASH HANDLE (THREE PIECE)
PS-1820S	18'	WESTERN PADDLE SPOON WITH 1.5" THICK ASH HANDLE (TWO PIECE)



JETTING AND VACUUM TOOLS AND ACCESSORIES

SEWER HOSE PROTECTION EQUIPMENT

SAMR-1 UPPER MANHOLE ROLLER GUIDE (36" ALUMINUM) WITH NYLON ROLLER

SAMR-48 SAME AS ABOVE BUT WITH 48" LEGS

SASR-1 UPPER MANHOLE ROLLER GUIDE (STEEL CONSTRUCTION WITH NYLON ROLLER)

DPTR-1 UPPER MANHOLE "Y" ROLLER WITH ROOM FOR 8" SUCTION TUBE
OPENS UP IN MIDDLE FOR EXTRA ROOM. HINGED SO YOU CAN USE AS
CLOSED STANDARD OR OPEN "Y"

SAMA-1 UPPER MANHOLE ROLLER GUIDE (ALUMINUM) ALUMINUM ROLLER

ADJ-2-S ADJUSTABLE TOP SAFETY ROLLER. ALL STEEL CONSTRUCTION WITH LATERAL
WINGS FOR SAFETY AND TO HOLD POLES CONNECTED TO BOTTOM ROLLER

SJS-1 TIGER TAIL 3" X 36"
SJS-2 TIGER TAIL 2" X 36"

SJS-HD HEAVY DUTY TIGERTAIL PUMA HOSE GUIDE 3"
Smooth bore rubber hose, steel banded cuffs, king clamp rope lasts
10X longer than standard Tiger Tails

SJ2-HD HEAVY DUTY PUMA HOSE GUIDE 2"

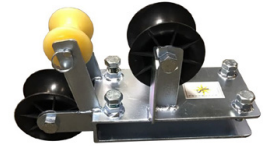
ADJ-1 ADJUSTABLE TOP MANHOLE ROLLER.
Tubular Steel sides to Manholes from 24" to 36". Opposing brackets grab manhole
ring. 3" Gap when opened up allows you to insert hose without taking apart

SSC-24 ANTI-SPLASH MANHOLE ROLLER GUIDE FOR 24"
SSC-36 ANTI-SPLASH MANHOLE ROLLER GUIDE FOR 36"
All aluminum construction with nylon roller and thick 3/8" Polycarbonate eliminates possibility of getting splashed by sewer water or falling in the manhole opening



CORRUGATED PIPE ROLLER

- STR-1 ROLLER FOR CORRUGATED PIPE PROTECTS YOUR HOSE WHEN CLEANING WHEN YOU NEED TO DROP YOUR HOSE OVER AN ELEVATED ROAD TO CLEAN A CULVERT THIS WILL PROTECT YOUR HOSE FROM SCRAPES AND SHREDDING



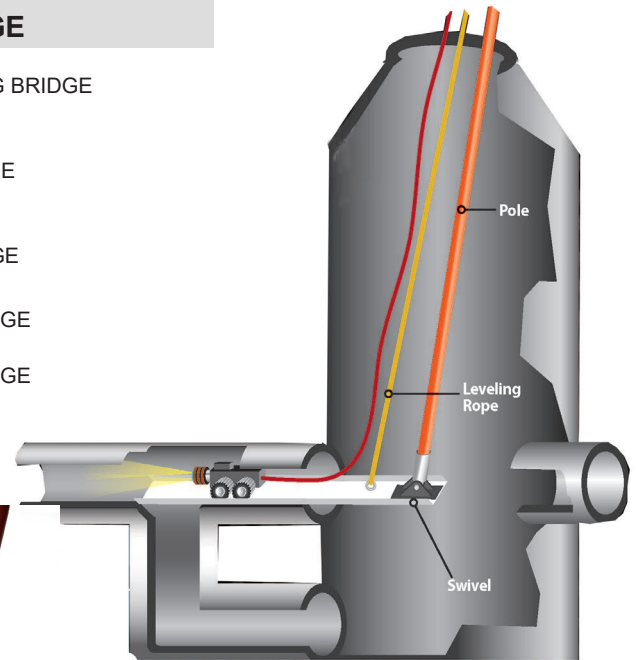
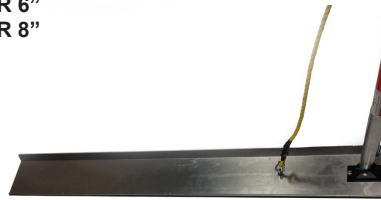
LOWER MANHOLE ROLLER GUIDES

- GTT-7 TIGER TAIL 5 ROLLER GUIDE. WITH 25' ROPE ALL ALUMINUM LOWERS YOUR HOSE AND NOZZLES INTO SEWER PIPE. PROTECTS HOSE, LIGHTWEIGHT AND EASY TO USE. 5 POLYPROPYLENE ROLLERS
- LCR-5 LOWER CAMERA ROLLER. ALL ALUMINUM WITH 4 OFFSET ROLLERS, 2 REMOVABLE TO FEED CABLE THROUGH. MOVABLE SHOE FOR STANDARD FIBERGLASS POLES OR CUES STYLE PUSH BUTTON POLES
- SDA-2 ARTICULATING ROLLER GUIDE ABLE TO GUIDE HOSE OVER AND UNDER EXPOSED PIPE. BENDS IN THE MIDDLE SO THAT YOUR HOSE WON'T GET RIPPED UP BY CORRUGATED STEEL PIPE 9 ROLLERS AND 2 HOSE STAYS ASSURE YOUR HOSE STAYS IN POSITION. COMES WITH 25' NYLON ROPE
- 729-A COMPACT LOWER MANHOLE ROLLER, STEEL, WITH 4 YELLOW POLYURETHANE ROLLERS. SAFETY ORANGE WITH TOP ADAPTER FOR FIBERGLASS POLE (3/16" STEEL 13"L X 15"H)
- SHDS-1 ALUMINUM LOWER MANHOLE ROLLER GUIDE SHOE - FOR LARGER LINES (4 NYLON ROLLERS) 3/4" THREADED CONNECTION. POLES NOT INCLUDED (21 1/2 x 21 1/2)
- SHDS-1ST **SAME AS ABOVE BUT STEEL CONSTRUCTION**
- LMER-1 LOWER MANHOLE EASEMENT ROLLER. ALLOWS OPERATOR TO CHANGE DIRECTION OF HOSE IN MANHOLE THAT HAS DENIED ACCESS. THIS TOOL/ROLLER ALLOWS YOU TO TURN THE HOSE 90° DELRIN ROLLER SPINS ON 2 SEALED BEARINGS
- SSR-5 STAKE ROLLER FOR HOSE TO GO AROUND BENDS HARDENED POINT AND HEAD. SPADE TO KEEP FROM TURNING
- HGR-1 HOSE GUIDE ROLLER-GRABBER FOR FIBERGLASS POLES
- HGR-1T HOSE GUIDE ROLLER-GRABBER FOR THREADED POLES HOSE IS CRADLED IN LOWER HOOKS TO ALLOW YOU TO LAUNCH THE REPLACEMENT NOZZLE WITH ROLLER ALREADY IN PLACE
- PR-1 DELRIN REPLACEMENT ROLLER BLACK
- PR-1Y YELLOW POLYURETHANE REPLACEMENT ROLLER
- PR-1-WB DELRIN REPLACEMENT ROLLER WITH 2 INTEGRATED SEALED BEARINGS
- FE-1 POLE ADAPTER. CONNECTS TO 3/4" THREADED NPT FOR ABOVE GUIDE SHOE ROLLERS TO OUR QUICK CONNECT FIBERGLASS POLES



DROP MANHOLE BRIDGE

- DMB-1 DROP MANHOLE BRIDGE FOR 8" **SEWER LINE** and UP 48" LONG BRIDGE
(This is our most commonly used size. Made for a crawler with a 6" width)
(Includes Pole Connector & 25' Rope for leveling)
- DMB-1S DROP MANHOLE BRIDGE FOR 6" SEWER LINE. 48" LONG BRIDGE
(This is our smallest bridge)
(Includes Pole Connector & 25' Rope for leveling)
- DMB-2 DROP MANHOLE BRIDGE FOR 8" **SEWER LINE**. 60" LONG BRIDGE
(Includes Pole Connector & 25' Rope for leveling)
- DMB-3 DROP MANHOLE BRIDGE FOR 10" **SEWER LINE**. 48" LONG BRIDGE
(Includes Pole Connector & 25' Rope for leveling)
- DBM-4 DROP MANHOLE BRIDGE FOR 12" **SEWER LINE**. 48" LONG BRIDGE
(Includes Pole Connector & 25' Rope for leveling)
- DMB-1-24 DROP MANHOLE BRIDGE KIT.
(Includes: Set of 24' Long Poles STD-24)
CHOOSE EITHER 6" OR 8" SIZE PIPE.
- Part#: DMB-1-24-6 FOR 6"
 - Part#: DMB-1-24-8 FOR 8"



DEEP MANHOLE TUBE HOLDER (PAT. PEND.)

- | | | |
|--------|----|---|
| DTH-8 | 8" | 8" DEEP TUBE HOLDER. USE TO LOWER TUBES INTO MANHOLE. FOR 36" |
| DTH-6 | 6" | 6" DEEP TUBE HOLDER. USE TO LOWER TUBES INTO MANHOLE. FOR 36" |
| DTH-50 | 8" | 8" DEEP TUBE HOLDER. EXTENDED ARM TO 50" LENGTH |
| DTH-60 | 8" | 8" DEEP TUBE HOLDER. EXTENDED ARM TO 60" LENGTH |



CROWN NOZZLE REDUCERS/EXCAVATOR CUFFS / ELBOWS / TUBE CLAMPS

- | | | |
|---------|-----------|---|
| RCN8SS | 8" X 5.5" | Crown Nozzle Reducer 12" Long. Vactor |
| RCN8SSC | 8" X 5.5" | Crown Nozzle Reducer 12" Long. Camel female band lock x reduced crown |
| RCN8SSV | 8" X 5.5" | Crown Nozzle Reducer 12" Long. Vac-All male band lock x reduced crown |



CROWN NOZZLE REDUCERS WITH CUFF FOR HYDROEXCAVATION/EXCAVATOR CUFFS

- | | | |
|----------|---------|--|
| RCUFF8FF | 8" X 6" | Hydro Excavator Reducer Cuff 8" Flat Flange x 6" Kanaflex Cuff |
| RCUFF8CT | 8" X 6" | Hydro Excavator Reducer Cuff 8" Bandlock Female (Camel) x 6" Kanaflex Cuff |
| RCUFF8JT | 8" X 6" | Hydro Excavator Reducer Cuff 8" Bandlock Male (Vac-All) x 6" Kanaflex Cuff |
| SCUFF8 | 8" X 8" | Hydro Excavator Straight Cuff 8" Flat Flange x 8" Kanaflex Cuff |



ALUMINUM ELBOWS

- | | |
|---------|--|
| CN908FF | 8" Flange Short Radius 90° Elbow with Flat Flange x Crown Nozzle. All Aluminum |
| EL98FF | 8" Flange Short Radius 90° Elbow with Flat Flange x Flat Flange. All Aluminum |
| EL458FF | 8" Flange Short Radius 45° Elbow with Flat Flange x Flat Flange. All Aluminum |



BEST IDEA EVER FOR YOUR SUCTION MACHINE - VAC TRAPS!

Vac-Traps are a Patent Pending item invented by David Pryor the owner of Southland Tool Mfg. So please do not accept any imitations, but only the best, from the source.

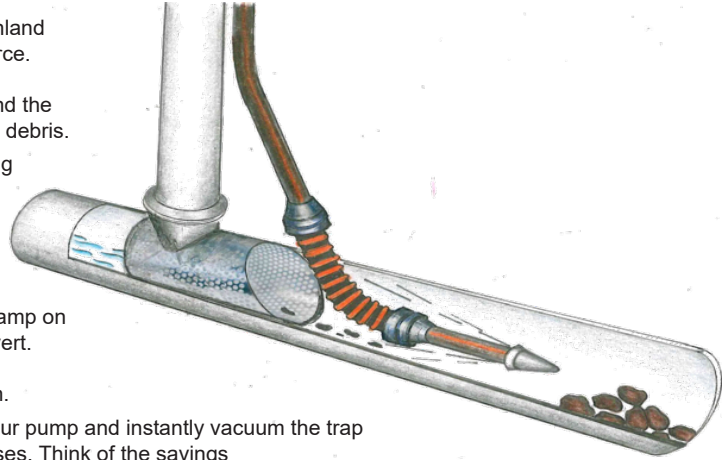
Southland Tool Inc. makes a variety of Vac-Trap Debris Catchers. The idea behind the Vac-Trap is to keep the water in the sewer line where it belongs and remove only debris.

When you are vacuuming the debris coming down the sewer you usually are using a crown nozzle elevated above the flow on the down stream side of the invert. This accepted way of suctioning debris means you remove a great deal of water from the sewer line that requires you to either, decant or dump the water, along with the debris. Decanting takes time, if you have the set up, and dumping water along with debris is expensive and inefficient.

The Vac-Trap allows you to keep the water in the sewer where it belongs. Just clamp on the correctly sized Vac-Trap to the end of your suction tube and lower into the invert. The sewer debris flows through it and traps the debris but lets the water filter out. You don't even have to run your PD or fan, just let the trap do the work on its own.

Once the trap is full and you see the water start to back up then simply turn on your pump and instantly vacuum the trap clean, then you're ready to start again. The Vac-trap pays for itself in just a few uses. Think of the savings of not having to run your suction pump continuously, not having to waste time to de-cant or dump later on.

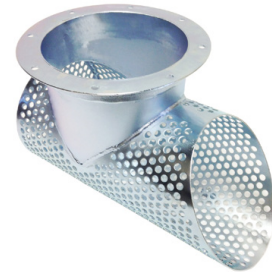
Now you can fill your tank with 80% debris and only 20% water.



VACTOR FLAT FLANGE TYPE

FULL FLOW

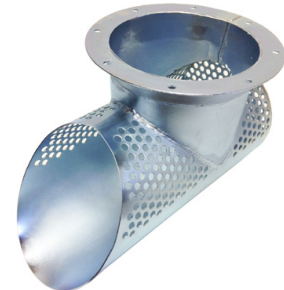
BT-6	6"	6" VAC-TRAP FOR 8" VACTOR SUCTION TUBE FLAT FLANGE
BT-8	8"	8" VAC-TRAP FOR 8" VACTOR SUCTION TUBE FLAT FLANGE
BT-10	10"	10" VAC-TRAP FOR 8" VACTOR SUCTION TUBE FLAT FLANGE
BT-12	12"	12" VAC-TRAP FOR 8" VACTOR SUCTION TUBE FLAT FLANGE
BT-15	15"	15" VAC-TRAP FOR 8" VACTOR SUCTION TUBE FLAT FLANGE
BT-18	18"	18" VAC-TRAP FOR 8" VACTOR SUCTION TUBE FLAT FLANGE
BT-24	24"	24" VAC-TRAP FOR 8" VACTOR SUCTION TUBE FLAT FLANGE



VACTOR FLAT FLANGE TYPE (With Grit Covers)

HALF MOON-CATCHES SAND

BT-6S	6"	6" VAC-TRAP GRIT FOR 8" VACTOR SUCTION TUBE FLAT FLANGE
BT-8S	8"	8" VAC-TRAP GRIT FOR 8" VACTOR SUCTION TUBE FLAT FLANGE
BT-10S	10"	10" VAC-TRAP GRIT FOR 8" VACTOR SUCTION TUBE FLAT FLANGE
BT-12S	12"	12" VAC-TRAP GRIT FOR 8" VACTOR SUCTION TUBE FLAT FLANGE
BT-15S	15"	15" VAC-TRAP GRIT FOR 8" VACTOR SUCTION TUBE FLAT FLANGE
BT-18S	18"	18" VAC-TRAP GRIT FOR 8" VACTOR SUCTION TUBE FLAT FLANGE
BT-24S	24"	24" VAC-TRAP GRIT FOR 8" VACTOR SUCTION TUBE FLAT FLANGE



CAMEL STYLE FEMALE END

FULL FLOW

CT-6	6"	6" VAC-TRAP FOR 8" CAMEL TYPE FEMALE END
CT-8	8"	8" VAC-TRAP FOR 8" CAMEL TYPE FEMALE END
CT-10	10"	10" VAC-TRAP FOR 8" CAMEL TYPE FEMALE END
CT-12	12"	12" VAC-TRAP FOR 8" CAMEL TYPE FEMALE END
CT-15	15"	15" VAC-TRAP FOR 8" CAMEL TYPE FEMALE END
CT-18	18"	18" VAC-TRAP FOR 8" CAMEL TYPE FEMALE END
CT-24	24"	24" VAC-TRAP FOR 8" CAMEL TYPE FEMALE END



CAMEL STYLE FEMALE END (With Grit Covers)

HALF MOON-CATCHES SAND

CT-6S	6"	6" VAC-TRAP GRIT FOR 8" CAMEL TYPE FEMALE END
CT-8S	8"	8" VAC-TRAP GRIT FOR 8" CAMEL TYPE FEMALE END
CT-10S	10"	10" VAC-TRAP GRIT FOR 8" CAMEL TYPE FEMALE END
CT-12S	12"	12" VAC-TRAP GRIT FOR 8" CAMEL TYPE FEMALE END
CT-15S	15"	15" VAC-TRAP GRIT FOR 8" CAMEL TYPE FEMALE END
CT-18S	18"	18" VAC-TRAP GRIT FOR 8" CAMEL TYPE FEMALE END
CT-24S	24"	24" VAC-TRAP GRIT FOR 8" CAMEL TYPE FEMALE END



VAC-ALL MALE COUPLING END

FULL FLOW

JT-6	6"	VAC-TRAP FOR 8" VAC-ALL MALE END
JT-8	8"	VAC-TRAP FOR 8" VAC-ALL MALE END
JT-10	10"	VAC-TRAP FOR 8" VAC-ALL MALE END
JT-12	12"	VAC-TRAP FOR 8" VAC-ALL MALE END
JT-15	15"	VAC-TRAP FOR 8" VAC-ALL MALE END
JT-18	18"	VAC-TRAP FOR 8" VAC-ALL MALE END

VAC-ALL MALE COUPLING END (With Grit Covers)

HALF MOON-CATCHES SAND

JT-6S	6"	VAC-TRAP GRIT FOR 8" VAC-ALL MALE END
JT-8S	8"	VAC-TRAP GRIT FOR 8" VAC-ALL MALE END
JT-10S	10"	VAC-TRAP GRIT FOR 8" VAC-ALL MALE END
JT-12S	12"	VAC-TRAP GRIT FOR 8" VAC-ALL MALE END
JT-15S	15"	VAC-TRAP GRIT FOR 8" VAC-ALL MALE END
JT-18S	18"	VAC-TRAP GRIT FOR 8" VAC-ALL MALE END

ADD "6" TO END OF PART #3 FOR 6" UP-TUBE FOR ANY VAC-TRAP. SAME PRICE

“DIG IT” HYDRO-EXCAVATING TOOLS

HYDRO-EXCAVATOR TOOL “DIG-IT” Is a lightweight attachment for your sewer hose, with sewer hose size (3/4” or 1”) and suction tubes sizes (6’ OR 8’). The wet ring has either 4, 8 or 10 replaceable stainless steel jets according to your GPM and PSI. Jets are slightly angled and zero degrees. Bottom rubber cuff provides protection.

PART NO.	MACHINE	TUBE SIZE	HOSE	JETS	PRICE
HY-EX-8V4-3/4	VACTOR/VAC-CON	8”	3/4	4	
HY-EX-8V8-3/4	VACTOR/VAC-CON	8”	3/4	8	
HY-EX-8V10-3/4	VACTOR/VAC-CON	8	3/4	10	
HYH-EX-8V4-1	VACTOR/VAC-CON	8”	1	4	
HYH-EX-8V8-1	VACTOR/VAC-CON	8”	1	8	
HYH-EX-8V10-1	VACTOR/VAC-CON	8”	1	10	
HY-EX-8C4-3/4	CAMEL	8”	3/4	4	
HY-EX-8C8-3/4	CAMEL	8”	3/4	8	
HY-EX-8C10-3/4	CAMEL	8”	3/4	10	
HY-EX-8C4-1	CAMEL	8”	1	4	
HY-EX-8C8-1	CAMEL	8”	1	8	
HY-EX-8C10-1	CAMEL	8”	1	10	
HY-EX-8J4-3/4	VAC-ALL	8”	3/4	4	
HY-EX-8J8-3/4	VAC-ALL	8”	3/4	8	
HY-EX-8J10-3/4	VAC-ALL	8”	3/4	10	
HY-EX-8J4-1	VAC-ALL	8”	1	4	
HY-EX-8J8-1	VAC-ALL	8”	1	8	
HY-EX-8J10-1	VAC-ALL	8”	1	10	

ALL ARE AVAILABLE IN 6” TUBE SIZE. ADD “6” AFTER HY-EX. SAME PRICE AS 8”

HYDRO-VAC TUBE HOLDER AND HANDLES

TWO HAND STYLE

HYH-4	4”	4” HYDRO -VAC TUBE HOLDER WITH 2 HANDLES FOR 4” TUBE OR HOSE
HYH-6	6”	6” HYDRO -VAC TUBE HOLDER WITH 2 HANDLES FOR 6” TUBE OR HOSE
HYH-8	8”	8” HYDRO -VAC TUBE HOLDER WITH 2 HANDLES FOR 4” TUBE OR HOSE



ONE HAND VACTOR STYLE

HYH-6-VS	6”	6” VACTOR STYLE WITH LARGER HANDLES FOR 6” TUBE OR HOSE
HYH-8-VS	8”	8” VACTOR STYLE WITH LARGER HANDLES FOR 8” TUBE OR HOSE



ONE HAND VACTOR STYLE

HYH-8-WH	8”	8” TUBE CLAMP VACTOR STYLE WITH ADJUSTABLE HOOK TYPE CLAMP
----------	----	--



TUBE HOSE CLAMPS (KEEPS YOUR HOSE STEADY AT EVERY CONNECTION)

THV-8	TUBE HOSE CLAMP	VACTOR/VAC-CON	8”
THC-8	TUBE HOSE CLAMP	CAMEL/VAC-ALL	8”



INDUSTRIAL HYDRO VACUUM EQUIPMENT

Industrial Vacuum Tools And Attachments Make Your Life Safer and Easier For Your Employees

Do you feel safe when vacuuming? Do you want your safety to be in your hands? Don't get caught not having this item in your safety program. It is essential and necessary for all vacuum operators to have control of the force of vacuum.

Industrial Vacuum Users Will Easily See The Benefits Of The Safety Shutter Nozzle. It Allows You To Control The Flow Of Vacuum At The Point Of Entry. With Just A Push Of A Lever You Can Completely Release The Vacuum Flow Or You Can Control The Amount Of Suction To The End Of The Nozzle.

GPSS-4BL 4" SAFETY SHUTTER SUCTION NOZZLE FOR 4" FLEX HOSE
Designed for 4" Flex Hose That Will Slip Over The Smooth Connection End.
Hose Will Swivel When Connected To Allow For Easy Positioning Of The Nozzle

GPSS-6BL 6" SAFETY SHUTTER SUCTION NOZZLE FOR 6" FLEX HOSE
Same As Above But For 6" Flex Hose

GP-TRI TRI-POD FOR SAFETY SHUTTER SUCTION NOZZLES
The Tri-Pod Allows You To Set Up The Safety Nozzle For Hands Free
Operation. It Works With The 4" or 6" Nozzle And Is Great For Pushing Material
To The Inlet Essential Making It A One-Man Job

GP-EXT EXTENSION HANDLE FOR SAFETY
The 3' Extension Handle Connects To The Safety Nozzle Allowing You to Stand
Up Straight To Take The Strain Off Your Back. Removing The Extension Handle
Allows You To Use The Safety Nozzle In Tight Confined Areas.

GP-62 2' X 6" EXTENSION TUBE FOR GP22-6BL
GP-63 3' X 6" EXTENSION TUBE FOR GP22-6BL
GP-42 2' X 4" EXTENSION TUBE FOR GP22-6BL
GP-43 3' X 4" EXTENSION TUBE FOR GP22-6BL

**All Aluminum tube extension. The suction inlet of the safety nozzle
to suck underwater or in any area where you need to extend the inlet.**

GP-DB-6 6" DUCKBILL NOZZLE FOR SAFETY SHUTTER SUCTION NOZZLE
GP-DB-4 4" DUCKBILL NOZZLE FOR SAFETY SHUTTER SUCTION NOZZLE .

**The Duckbill Nozzle is great for larger areas where extra width for liquids or slurry
might be needed. Special end connects directly to end of safety nozzle with clamp**

GP-DB-FF8 8" DUCKBILL NOZZLE FOR SAFETY SHUTTER SUCTION NOZZLE WITH 8" FLAT FLANGE

SPECIALTY VACUUM FITTINGS/CLAMPS/ADAPTERS

8FFX6FH 8" FLAT FLANGE X 6" FLEX HOSE ADAPTER WITH RING TO CONNECT TO BAND LOCK CLAMP
AND HOSE. YOUR HOSE WILL SWIVEL ON THIS ADAPTER. **HOSE NOT INCLUDED**



TRANSITION COUPLERS CHANGE ONE TYPE TUBE TO ANOTHER

8FFX8BLF	8" FLAT FLANGE X 8" FEMALE BANDLOCK COUPLER. CONNECTS YOUR FLAT FLANGE TUBES TO YOUR BAND LOCK MALE COUPLING. ZINC PLATED
8FFX8BLM	8" FLAT FLANGE X 8" MALE BANDLOCK COUPLER. CONNECTS YOUR FLAT FLANGE TUBES TO YOUR BAND LOCK/CAMEL FEMALE COUPLING. ZINC PLATED
6FFX6BLF	6" FLAT FLANGE X 6" FEMALE BANDLOCK COUPLER. CONNECTS YOUR FLAT FLANGE TUBES TO YOUR BAND LOCK MALE COUPLING. ZINC PLATED
6FFX6BLM	6" FLAT FLANGE X 6" MALE BANDLOCK COUPLER. CONNECTS YOUR FLAT FLANGE TUBES TO YOUR BAND LOCK/CAMEL FEMALE COUPLING. ZINC PLATED



TRANSITION REDUCER COUPLERS CHANGE ONE TYPE TUBE TO ANOTHER

8FFX6FF	8" X 6" FLAT FLANGE REDUCER COUPLING. ZINC PLATED REDUCES YOUR 8" FLAT FLANGE TUBES TO 6" FLAT FLANGE TUBES
8FFX6NPT	8" FLAT FLANGE X 6" NPT THREADED TRANSITION COUPLING
6BLFX4NPT	6" BAND LOCK FEMALE X 4" MALE NPT THREAD
8FFX6BLF	8" FLAT FLANGE REDUCER TO 6" BAND LOCK FEMALE COUPLER REDUCES YOUR 8" FLAT FLANGE TUBES TO YOUR 6" MALE END BAND LOCK TUBES
8FFX6BLM	8" FLAT FLANGE REDUCER TO 6" BAND LOCK MALE COUPLER REDUCES YOUR 8" FLAT FLANGE TUBES TO YOUR 6" FEMALE END BAND LOCK TUBES



COUPLERS X HOSE SHANK END FOR YOUR VACUUM MACHINES

8FFX8HA	8" FLAT FLANGE X 8" HOSE ADAPTER. CONNECTS YOUR 8" FLANGE VACUUM TUBES TO AN 8" KANAFLE TYPE VACUUM HOSE
6FFX6HA	8" FLAT FLANGE X 8" HOSE ADAPTER. CONNECTS YOUR 6" FLAT FLANGE VACUUM TUBES TO AN 6" KANAFLE TYPE VACUUM HOSE
8FFX6HA	8" FLAT FLANGE X 6" HOSE ADAPTER REDUCER. ALL STEEL WITH MOUNTING HOLES ZINC PLATED AND 7.5" OVERALL LENGTH (HOSE NOT INCLUDED)



FLANGED DOUBLE HOSE SHANK REDUCER. 8" TO DOUBLE 4". OPENING FOR 4" HOSE.

8FFX44DD 8" FLAT FLANGE X DOUBLE 4" HOSE CONNECTORS. ONE WITH SAFETY GRID INCLUDED FOR FREE AIR APPLICATION. 8" OVERALL LENGTH AND ZINC PLATED

8FFX44ME 8" FLAT FLANGE X DOUBLE 4" HOSE CONNECTOR WITH ONE 4" THREADED NPT MALE END



TUBE CLAMPS

S16584 8" VACTOR STYLE QUICK CLAMP. ADJUSTABLE TRIANGLE HOOK AND TRIMLINE HANDLE

S690-0073 6" VAC-CON STYLE QUICK CLAMP. OPEN HOOK ADJUSTABLE AND TRIMLINE HANDLE

S680-0015 8" VAC-CON STYLE QUICK CLAMP. OPEN HOOK ADJUSTABLE AND TRIMLINE HANDLE

S680-0015WLC 8" VAC-CON STYLE QUICK CLAMP. OPEN HOOK ADJUSTABLE AND TRIMLINE HANDLE
With safety pin locking device which prevents latch from opening

S42588WLC 8" BANDLOCK STYLE TUBE CLAMP With safety pin locking device which prevents latch from opening

S42587 6" BANDLOCK STYLE TUBE CLAMP

S42588 8" BANDLOCK STYLE TUBE CLAMP



HYDRAULIC ROOT SAW CUTTERS (MOTORS & KITS)

PUMA "HD" HIGH DISPLACEMENT HYDRAULIC ROOT SAW CUTTER

SOUTHLAND TOOL Offers you the "PUMA" HD ROOT CUTTER MOTOR as our standard cutter. Don't be fooled by smaller blue motors that offer only a fraction of the power that this high displacement motor offers. It has higher cutter force to plow into roots, grease, protruding taps and other stoppages. These units fit our front flanged EZ-SKIDS as seen below with 4 bolt in front and 2 bolt in the tail Nozzle. The profile of this cutter is designed for lines from 6" and up. The motor can accommodate hose sizes of 3/4" and 1" with flow from 35 to 80 gpm and pressure from 2000 to 3000 psi. Rated up to a maximum of 235 lbs. of torque.

PUMA ROOT CUTTER KIT AS FOLLOWS:

- SHYK-1 1" PUMA "HD" HIGHER DISPLACEMENT, 1" HYDRAULIC ROOT SAW MOTOR KIT INCLUDES: 4 easy skids of 6", 8, 10" and 12". 4 HD concave root saws for 6", 8", 10" and 12", also includes 1" HUB, Arbor turn tool, tool box and maintenance instructions.
- SHYK-3/4 3/4" SAME KIT AS ABOVE BUT FOR 3/4" SEWER HOSE



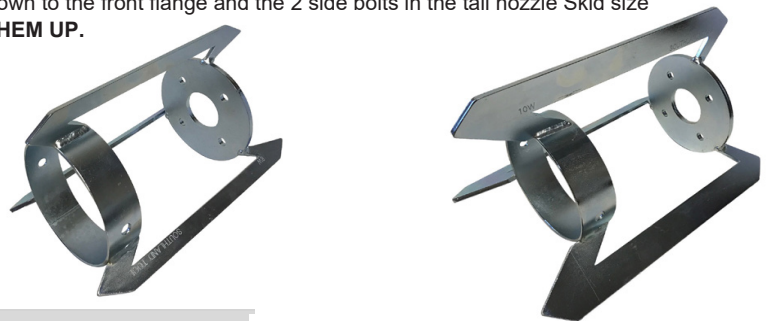
MOTORS-PARTS AND CHUCKS (FOR SAW BLADES Y CUTTERS SEE PAGES 19,26,27)

- | | | |
|----------|------|--|
| SHYM-1 | 1" | PUMA "HD" HIGHER DISPLACEMENT, 1" HYDRAULIC ROOT SAW MOTOR AND TAIL NOZZLE |
| SHYM-3/4 | 3/4" | PUMA "HD" HIGHER DISPLACEMENT, 3/4" HYDRAULIC ROOT SAW MOTOR AND TAIL NOZZLE |
| TNPM | 1" | TAIL NOZZLE REPLACEMENT ONLY |
| SKP-1R | 1" | REPAIR KIT FOR PUMA MOTOR - INCLUDES SEALS, THRUST BEARING AND RACE |
| GERP-1 | 1" | GEROTOR FOR PUMA MOTOR |
| RSH-1A | 1" | ROOT SAW HUB FOR ROOT CUTTER. FOR STANDARD 1/8" THICKNESS SAW BLADES |
| RSH-1B | 1" | ROOT SAW HUB FOR ROOT CUTTER. FOR HEAVY DUTY 3/16" THICKNESS SAW BLADES |
| 3BHC-1 | 1" | 3 BLADE CHUCK FOR ROOT CUTTER. FLAT AND CURVED BLADES SOLD SEPARATELY |

EZ ROOT CUTTER SKIDS FOR PUMA "HD" MOTORS

EZ ROOT CUTTER Skids are designed to skid over the motor and bolt down to the front flange and the 2 side bolts in the tail nozzle Skid size is stamped into the fins, **NO MORE LOSING THE SKIDS OR MIXING THEM UP.**

- | | | |
|-------|-----|---------------------------------------|
| SS-6 | 6" | 6" EZ ROOT CUTTER SKID WITH 6 RAILS. |
| SS-8 | 8" | 8" EZ ROOT CUTTER SKID WITH 6 RAILS. |
| SS-10 | 10" | 10" EZ ROOT CUTTER SKID WITH 6 RAILS. |
| SS-12 | 12" | 12" EZ ROOT CUTTER SKID WITH 6 RAILS. |
| SS-15 | 15" | 15" EZ ROOT CUTTER SKID WITH 6 RAILS. |
| SS-18 | 18" | 18" EZ ROOT CUTTER SKID WITH 6 RAILS. |
| SS-20 | 20" | 20" EZ ROOT CUTTER SKID WITH 6 RAILS. |
| SS-22 | 22" | 22" EZ ROOT CUTTER SKID WITH 6 RAILS. |
| SS-24 | 24" | 24" EZ ROOT CUTTER SKID WITH 6 RAILS. |



New DONUT SKIDS

- S950-108 FRONT 4 BOLT SKID DONUT FOR PUMA MOTOR

- S950-109 REAR 2 BOLT SKID DONUT FOR PUMA MOTOR



SRRC-1H SUPER "RED HOT" EXTENDED DUTY HYDRAULIC ROOT CUTTER MOTORS

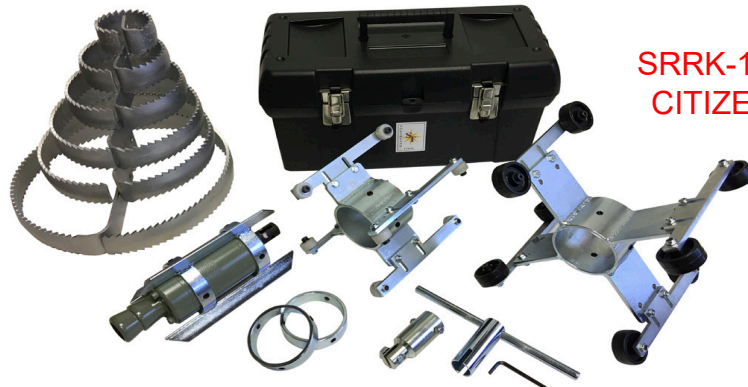
SRRC-1H	1"	ROUND BODY SUPER "RED HOT" HEAVY DUTY BEARING HYDRAULIC ROOT SAW MOTOR. This motor has been specially machined for a Heavy Duty thrust bearing that performs better for extended life, smooth running and reduced maintenance problems. This larger steel bearing absorbs the constant pounding of the shaft when plowing into root masses and stoppages. This motor fits all round body skids including Patriot and Smart Cutters.
		The round profile of the cutters allows it to enter sewer lines from 4" and up. The motor can accommodate hose sizes of 1" and 3/4" with flow from 35 to 80 gpm and pressure from 2000 to 3000 psi. Rated up to maximum of 235 lbs. of torque and 175 lbs. at continuous operation. This tool has the power to clean while the bearing can take a beating and keep on ticking. This motor beat all competitor motors.
SRRC-3/4H	3/4"	SAME AS ABOVE BUT FOR 3/4" HOSE.
SRRK-1H	1"	STANDARD ROUND BODY KIT With 4 skids and 4 saws 6", 8", 10" and 12"
SRRK-3/4H	3/4"	SAME AS ABOVE BUT FOR 3/4" HOSE.



SRRC-1P ROUND BODY SUPER "GREEN MACHINE" HYDRAULIC MOTOR

SOUTHLAND TOOL "SUPER GREEN MEANIE" Round Body root cutting motor is a superior cutting and ripping tool for cleaning roots, cutting taps and destroying other debris and buildup found in all sewer lines. The round profile of this motor allows it to be used in 4" pipes and up for either 3/4" or 1" Hose. Flow from 35 to 80 gpm and pressure from 1750 to 3000. 235 lbs. of torque. buy this motor only to replace your worn out Patriot or smart cutter green motor and use the green skids you have or buy our skids, standard or wheeled.

SRRC-1P	1"	ROUND BODY "SUPER GREEN MEANIE" 175lb. Torque motor replaces your patriot and smart cutters. This unit fits all of your patriot and smart cutter style skids
		Equipment Company.
SRRC-3/4P	3/4"	SAME AS ABOVE BUT FOR 3/4" HOSE.
SRRK-3/4, 1	1"	STANDARD ROUND BODY KIT With 4 Skids and 4 saws 6" , 8" , 10" and 12"

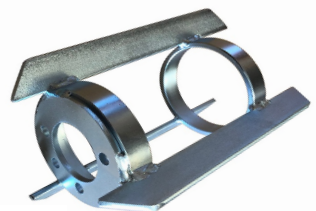
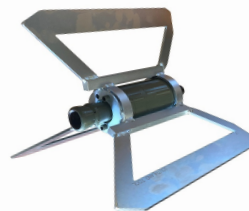


**SRRK-14-15W
CITIZEN KIT**

SRRK-14-15W		CITIZEN ROUND BODY "SUPER GREEN MACHINE" WHEELED KIT (Above) for pipe from 4" to 15" includes: Motor, Heavy Duty concave root saws of 4", 6", 8", 10" 12" and 15". 4" Round ring set, 6" Skid, 8", 10" adjustable wheeled skid, 12", 15" wheeled skids, 1" Hub for saws, turning maintenance tool, tool box and instructions.
-------------	--	---

SKIDS FOR ROUND BODY "RED" AND "GREEN" ROOT CUTTER MOTORS

RBS-4	4"	4" RING SET FOR ROUND BODY ROOT CUTTER
RBS-6	6"	6" SKID FOR ROUND BODY ROOT CUTTER
RBS-8	8"	8" SKID FOR ROUND BODY ROOT CUTTER
RBS-10	10"	SKID FOR ROUND BODY ROOT CUTTER
RBS-12	12"	SKID FOR ROUND BODY ROOT CUTTER
RBS-15	15"	SKID FOR ROUND BODY ROOT CUTTER
RBS-18	18"	SKID FOR ROUND BODY ROOT CUTTER
RBS-20	20"	SKID FOR ROUND BODY ROOT CUTTER
RBS-24	24"	SKID FOR ROUND BODY ROOT CUTTER
APS-1	8"-10"	ADJUSTABLE WHEELED SKID FOR ROUND BODY MOTORS ADJUSTS FROM 8" - 10"
APS-2	12"-15"	ADJUSTABLE WHEELED SKID FOR ROUND BODY MOTORS ADJUSTS FROM 12" - 15"



"HI-TORQUE" S906 HEAVY DUTY CONTRACTOR DUTY HYDRAULIC ROOT CUTTER

Southland Tools' S906M is the largest and most powerful of the Southland Tool Hydraulic motor line up. This "Hi-Torque" motor features a Gerotor design that internally lowers resistance and allows the motor to operate more efficiently while producing maximum cutting results.

The S906M Series of motors have all steel thrust bearing with robust roller that can handle the higher pressure loads of larger pumps and heavy cleaning in larger lines. This motor has long been referred to as the "Contractor Duty" motor as it holds up well under intense use for longer periods of time. Designed for lines from 6" to 30" the motor comes in 3/4", 1" and 1.25". It can handle flows of 10 to 170 gpm and pressure of 1500 to 3000 psi. It is rated to a maximum torque of 288 lbs. and 220 lbs. of continuous torque which is required for cutting taps in larger sizes.



HI-TORQUE HYDRAULIC ROOT SAW CUTTER KITS AND MOTORS

- S906K-1 "Hi-Torque" Hydraulic root saw motor includes: 4 easy skids of 6", 8", 10" and 12". 4 HD Concave root saws for 6", 8", 10 and 12", also includes 1" Hub, Arbor turn tool, tool box and maintenance instructions.
- S906K-3/4 Same as above but for 3/4" hose.
- S906M-1 HI-TORQUE HYDRAULIC ROOT CUTTER MOTOR ONLY FOR 1" SEWER HOSE
- S906M-3/4 HI-TORQUE HYDRAULIC ROOT CUTTER MOTOR ONLY FOR 3/4" SEWER HOSE
- S906M-1.25 HI-TORQUE HYDRAULIC ROOT CUTTER MOTOR ONLY FOR 1.25" SEWER HOSE



S906K-1
HI-TORQUE KIT

For Recyclers!

HI-TORQUE "ADVANCED KINETICS" CORROSION RESISTANT MOTOR

The S906M-AK series of motors is Southland Flagship motor. This motor is built for the same platform as the standard S-906M motor but has an infusion process at the cellular level applied to the internal parts that make it silky smooth to turn and ideal for recycler units, this process improves hydraulic performance and almost eliminates internal corrosion. This process known as "Advanced Kinetics" used a patented finish that improves coefficient allowing parts to run smoother which reduces drag, saves water and increases productivity. Known to sit for weeks with water inside and still turns.

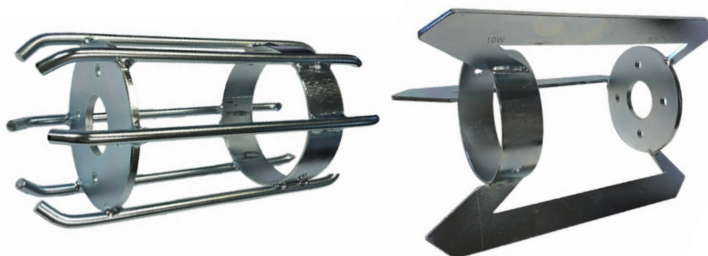


- S906M-1-AK HI-TORQUE HYDRAULIC ROOT CUTTER MOTOR ONLY 1" SEWER HOSE
- S906M-3/4-AK HI-TORQUE HYDRAULIC ROOT CUTTER MOTOR ONLY 3/4" SEWER HOSE
- S906M-1.25-AK HI-TORQUE HYDRAULIC ROOT CUTTER MOTOR ONLY FOR 1.25" SEWER HOSE
- S906M-1.50-AK HI-TORQUE HYDRAULIC ROOT CUTTER MOTOR ONLY FOR 1.50" SEWER HOSE



SKIDS FOR HI-TORQUE S906M STYLE ROOT CUTTERS

- | | | |
|---------|-----|--|
| STSS-6 | 6" | 6" EASY ROOT CUTTER SKID WITH 6 RAILS |
| STSS-8 | 8" | 8" EASY ROOT CUTTER SKID WITH 3 RAILS |
| STSS-10 | 10" | 10" EASY ROOT CUTTER SKID WITH 3 RAILS |
| STSS-12 | 12" | 12" EASY ROOT CUTTER SKID WITH 3 RAILS |
| STSS-15 | 15" | 15" EASY ROOT CUTTER SKID WITH 3 RAILS |
| STSS-18 | 18" | 18" EASY ROOT CUTTER SKID WITH 3 RAILS |
| STSS-20 | 20" | 20" EASY ROOT CUTTER SKID WITH 3 RAILS |
| STSS-22 | 22" | 20" EASY ROOT CUTTER SKID WITH 3 RAILS |
| STSS-24 | 24" | 24" EASY ROOT CUTTER SKID WITH 3 RAILS |



"PURPLE DEBRIS EATER" LATERAL ROOT CUTTER MOTORS FOR SMALLER LINES

Southland Tool "PURPLE DEBRIS EATER" Lateral root cutter motor packs a punch as it uses high torque and low speed to grind up grease and rip through roots in smaller 3" to 8" lines. Sized for 1/2", 3/4" or 1" hose it can accommodate pressures from 900 to 2000 psi and flows from 20 to 80 gpm. These purple motors can be bought alone or in kits. Skids are one piece design so they are easy to install.

- S903K-1/2 1/2" LATERAL MOTOR KIT INCLUDES: Concave saws from 3" to 8" and 3" set of rings and EZ skids of 4", 6" and 8". Arbor turning tool, Allen wrench, Tool box and Maintenance instructions
- S903K-3/4 3/4" LATERAL MOTOR COMPLETE KIT AS ABOVE BUT FOR 3/4" HOSE
- S903K-1 1" LATERAL MOTOR COMPLETE KIT AS ABOVE BUT FOR 1" HOSE
- S903M LATERAL MOTOR ONLY. **PLEASE SPECIFY WITH 1/2", 3/4" OR 1"**



ROOT CUTTER SKIDS AND RINGS FOR PURPLE DEBRIS EATER LATERAL CUTTER MOTOR

- LKS-3 LATERAL ROOT CUTTER SKID RING SET FOR 3" PIPE
- LKS-4 LATERAL ROOT CUTTER SKID FOR 4" PIPE
- LKS-6 LATERAL ROOT CUTTER SKID FOR 6" PIPE
- LKS-8 LATERAL ROOT CUTTER SKID FOR 8" PIPE

- RSH-5B 5/8" HUB FOR HYDRAULIC ROOT CUTTER SAW
- 3BHC-2 3 BLADE CHUCK FOR 5/8" HYD. ROOT CUTTER



ROOT CUTTER HUBS/CHUCK FOR 1" SHAFT MOTORS

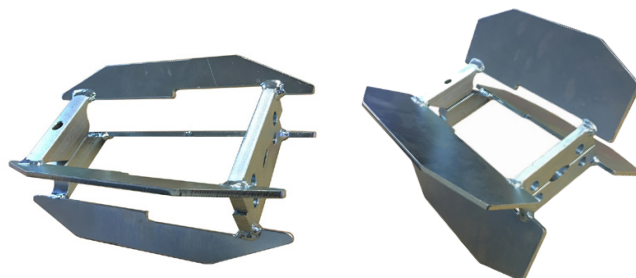
- RSH-1A 1" HUB FOR HYDRAULIC ROOT CUTTER STD. SAW 1/8"
- RSH-1B 1" HUB FOR HYDRAULIC ROOT CUTTER HD. SAW 3/16"
- RSH-5B 5/8" HUB FOR HYDRAULIC ROOT CUTTER SAW FOR 3/16 SAW BLADE
- RSH-5C 5/8" HUB FOR HYDRAULIC ROOT CUTTER SAW FOR 1/8 SAW BLADE
- 3BHC-1 3 BLADE CHUCK FOR 1" HYD. ROOT CUTTER

GOPHER SKIDS

- GFR-6 6" 6" GOPHER ROOT SAW SKID ASSEMBLY WITH FRONT RING AND REAR COLLAR
- GFR-8 8" 8" GOPHER ROOT SAW SKID ASSEMBLY WITH FRONT RING AND REAR COLLAR
- GFR-10 10" 10" GOPHER ROOT SAW SKID ASSEMBLY WITH FRONT RING AND REAR COLLAR
- GFR-12 12" 12" GOPHER ROOT SAW SKID ASSEMBLY WITH FRONT RING AND REAR COLLAR
- GFR-15 15" 15" GOPHER ROOT SAW SKID ASSEMBLY WITH FRONT RING AND REAR COLLAR

SHAMROCK STYLE 2-PART SKIDS FOR HI-TORQUE S906 ROOT CUTTERS

- STSS-6S 6" 6" SHAMROCK STYLE 2-PART SKIDS
- STSS-8S 8" 8" SHAMROCK STYLE 2-PART SKIDS
- STSS-10S 10" 10" SHAMROCK STYLE 2-PART SKIDS
- STSS-12S 12" 12" SHAMROCK STYLE 2-PART SKIDS
- STSS-15S 15" 15" SHAMROCK STYLE 2-PART SKIDS
- STSS-18S 18" 18" SHAMROCK STYLE 2-PART SKIDS
- STSS-20S 20" 20" SHAMROCK STYLE 2-PART SKIDS
- STSS-22S 22" 22" SHAMROCK STYLE 2-PART SKIDS
- STSS-24S 24" 24" SHAMROCK STYLE 2-PART SKIDS



SPECIALTY ROOT SAW BLADES CALCIUM CUTTER AND TAP CUTTERS

CARBIDE TIPPED CONCAVE ROOT SAWS

SCS-6	6"	CARBIDE TIPPED CONCAVE ROOT SAW BLADE ONLY. 3/16" THICK
SCS-8	8"	CARBIDE TIPPED CONCAVE ROOT SAW BLADE ONLY. 3/16" THICK
SCS-10	10"	CARBIDE TIPPED CONCAVE ROOT SAW BLADE ONLY. 3/16" THICK
SCS-12	12"	CARBIDE TIPPED CONCAVE ROOT SAW BLADE ONLY. 3/16" THICK
SCS-15	15"	CARBIDE TIPPED CONCAVE ROOT SAW BLADE ONLY. 3/16" THICK

CARBIDE TIPPED FLAT ROOT SAWS

SCFS-6	6"	CARBIDE TIPPED FLAT ROOT SAW BLADE ONLY. 3/16" THICK
SCFS-8	8"	CARBIDE TIPPED FLAT ROOT SAW BLADE ONLY. 3/16" THICK
SCFS-10	10"	CARBIDE TIPPED FLAT ROOT SAW BLADE ONLY. 3/16" THICK
SCFS-12	12"	CARBIDE TIPPED FLAT ROOT SAW BLADE ONLY. 3/16" THICK
SCFS-15	15"	CARBIDE TIPPED FLAT ROOT SAW BLADE ONLY. 3/16" THICK

CARBIDE WRAPPED CONCAVE ROOT SAWS

SCS-6W	6"	CARBIDE TIPPED AND CARBIDE WRAPPED CONCAVE ROOT SAW
SCS-8W	8"	CARBIDE TIPPED AND CARBIDE WRAPPED CONCAVE ROOT SAW
SCS-10W	10"	CARBIDE TIPPED AND CARBIDE WRAPPED CONCAVE ROOT SAW
SCS-12W	12"	CARBIDE TIPPED AND CARBIDE WRAPPED CONCAVE ROOT SAW
SCS-15W	15"	CARBIDE TIPPED AND CARBIDE WRAPPED CONCAVE ROOT SAW

CARBIDE WRAPPED FLAT ROOT SAWS

SCFS-6W	6"	CARBIDE TIPPED AND CARBIDE WRAPPED FLAT ROOT SAW
SCFS-8W	8"	CARBIDE TIPPED AND CARBIDE WRAPPED FLAT ROOT SAW
SCFS-10W	10"	CARBIDE TIPPED AND CARBIDE WRAPPED FLAT ROOT SAW
SCFS-12W	12"	CARBIDE TIPPED AND CARBIDE WRAPPED FLAT ROOT SAW
SCFS-15W	15"	CARBIDE TIPPED AND CARBIDE WRAPPED FLAT ROOT SAW

ANY SAW IS AVAILABLE WITH A WELDED ON 1" ARBOR HUB FOR \$60.00 ADD "WH" TO PART NUMBER

SUPER DUTY LARGE DIAMETER CONCAVE ROOT SAWS WITH SPOKES AND 1" HUB

SCRS-12	12"	CONCAVE HD SAW WITH 3 SPOKES AND 1" HUB
SCRS-15	15"	CONCAVE HD SAW WITH 3 SPOKES AND 1" HUB
SCRS-18	18"	CONCAVE HD SAW WITH 3 SPOKES AND 1" HUB
SCRS-20	20"	CONCAVE HD SAW WITH 3 SPOKES AND 1" HUB
SCRS-22	22"	CONCAVE HD SAW WITH 3 SPOKES AND 1" HUB
SCRS-24	24"	CONCAVE HD SAW WITH 3 SPOKES AND 1" HUB

SUPER DUTY LARGE DIAMETER FLAT ROOT SAW WITH SPOKES AND 1" HUB

SFRS-12	12"	FLAT HD SAW WITH 3 SPOKES AND 1" HUB
SFRS-15	15"	FLAT HD SAW WITH 3 SPOKES AND 1" HUB
SFRS-18	18"	FLAT HD SAW WITH 3 SPOKES AND 1" HUB
SFRS-20	20"	FLAT HD SAW WITH 3 SPOKES AND 1" HUB
SFRS-22	22"	FLAT HD SAW WITH 3 SPOKES AND 1" HUB
SFRS-24	24"	FLAT HD SAW WITH 3 SPOKES AND 1" HUB
SFRS-30	30"	FLAT HD SAW WITH 3 SPOKES AND 1" HUB

SUPER DUTY LARGE DIAMETER CARBIDE TIPPED ROOT SAWS WITH SPOKES AND 1" HUB

SCRS-12HD	12"	CONCAVE HD SAW WITH 3 SPOKES AND 1" HUB, CARBIDE TIPPED
SCRS-15HD	15"	CONCAVE HD SAW WITH 3 SPOKES AND 1" HUB, CARBIDE TIPPED
SCRS-18HD	18"	CONCAVE HD SAW WITH 3 SPOKES AND 1" HUB, CARBIDE TIPPED
SCRS-20HD	20"	CONCAVE HD SAW WITH 3 SPOKES AND 1" HUB, CARBIDE TIPPED
SCRS-22HD	22"	CONCAVE HD SAW WITH 3 SPOKES AND 1" HUB, CARBIDE TIPPED
SCRS-24HD	24"	CONCAVE HD SAW WITH 3 SPOKES AND 1" HUB, CARBIDE TIPPED

DIAMOND TAP CUTTERS

DTC-6	6"	DIAMOND TAP CUTTER
DTC-8	8"	DIAMOND TAP CUTTER
DTC-10	10"	DIAMOND TAP CUTTER
DTC-12	12"	DIAMOND TAP CUTTER
DTC-15	15"	DIAMOND TAP CUTTER

PVC TAP CUTTER

CTS-6	6"	PVC TAP CUTTER
CTS-8	8"	PVC TAP CUTTER
CTS-10	10"	PVC TAP CUTTER
CTS-12	12"	PVC TAP CUTTER
CTS-15	15"	PVC TAP CUTTER
CTS-18	18"	PVC TAP CUTTER

ARROW DIAMOND TIPPED CUTTER (CALCIUM CARBONATE CUTTER)

ADC-6	6"	ARROW DIAMOND POINT CUTTER
ADC-8	8"	ARROW DIAMOND POINT CUTTER
ADC-10	10"	ARROW DIAMOND POINT CUTTER
ADC-12	12"	ARROW DIAMOND POINT CUTTER
ADC-15	15"	ARROW DIAMOND POINT CUTTER



NOZZLE EXTENSIONS 1" - 3/4" - 1/2"

SSE-1	STRAIGHT STYLE LIGHTWEIGHT NOZZLE EXTENSION 1" X 13" LONG
SSE-3/4	STRAIGHT STYLE LIGHTWEIGHT NOZZLE EXTENSION 3/4" X 13" LONG
SSE-1/2	STRAIGHT STYLE LIGHTWEIGHT NOZZLE EXTENSION 1/2" X 13" LONG

4-FINNED NOZZLE EXTENSIONS 1"

FE-41	4"	1" X 4" 4 FINNED NOZZLE EXTENSION
FE-61	6"	1" X 6" 4 FINNED NOZZLE EXTENSION
FE-81	8"	1" X 8" 4 FINNED NOZZLE EXTENSION
FE-101	10"	1" X 10" 4 FINNED NOZZLE EXTENSION
FE-121	12"	1" X 12" 4 FINNED NOZZLE EXTENSION
FE-151	15"	1" X 15" 4 FINNED NOZZLE EXTENSION

4-FINNED NOZZLE EXTENSIONS 3/4"

FE-434	4"	3/4" X 4" 4 FINNED NOZZLE EXTENSION
FE-634	6"	3/4" X 6" 4 FINNED NOZZLE EXTENSION
FE-834	8"	3/4" X 8" 4 FINNED NOZZLE EXTENSION
FE-1034	10"	3/4" X 10" 4 FINNED NOZZLE EXTENSION
FE-1234	12"	3/4" X 12" 4 FINNED NOZZLE EXTENSION

4-FINNED NOZZLE EXTENSIONS 1/2"

FE-412	4"	1/2" X 4" 4 FINNED NOZZLE EXTENSION
FE-612	6"	1/2" X 6" 4 FINNED NOZZLE EXTENSION
FE-812	8"	1/2" X 8" 4 FINNED NOZZLE EXTENSION
FE-1012	10"	1/2" X 10" 4 FINNED NOZZLE EXTENSION
FE-1212	12"	1/2" X 12" 4 FINNED NOZZLE EXTENSION

6-FINNED HEAVY DUTY NOZZLE EXTENSIONS

FE-61-6	6"	1" X 6" 6 FINNED, 3/16" THICK HEAVY DUTY EXTENSION
FE-81-6	8"	1" X 8" 6 FINNED, 3/16" THICK HEAVY DUTY EXTENSION
FE-101-6	10"	1" X 10" 6 FINNED, 3/16" THICK HEAVY DUTY EXTENSION
FE-121-6	12"	1" X 12" 6 FINNED, 3/16" THICK HEAVY DUTY EXTENSION
FE-151-6	15"	1" X 15" 6 FINNED, 3/16" THICK HEAVY DUTY EXTENSION
FE-181-6	18"	1" X 18" 6 FINNED, 3/16" THICK HEAVY DUTY EXTENSION

6-WIRE NOZZLE EXTENSIONS 1"

WNE-41	4"	1" X 4" 6 WIRE NOZZLE EXTENSION
WNE-61	6"	1" X 6" 6 WIRE NOZZLE EXTENSION
WNE-81	8"	1" X 8" 6 WIRE NOZZLE EXTENSION
WNE-101	10"	1" X 10" 6 WIRE NOZZLE EXTENSION
WNE-121	12"	1" X 12" 6 WIRE NOZZLE EXTENSION
WNE-151	15"	1" X 15" 6 WIRE NOZZLE EXTENSION
WNE-181	18"	1" X 18" 6 WIRE NOZZLE EXTENSION
WNE-201	20"	1" X 20" 6 WIRE NOZZLE EXTENSION
WNE-241	24"	1" X 24" 6 WIRE NOZZLE EXTENSION

6-WIRE NOZZLE EXTENSIONS 3/4"

WNE-434	4"	3/4" X 4" 6 WIRE NOZZLE EXTENSION
WNE-634	6"	3/4" X 6" 6 WIRE NOZZLE EXTENSION
WNE-834	8"	3/4" X 8" 6 WIRE NOZZLE EXTENSION
WNE-1034	10"	3/4" X 10" 6 WIRE NOZZLE EXTENSION
WNE-1234	12"	3/4" X 12" 6 WIRE NOZZLE EXTENSION
WNE-1534	15"	3/4" X 15" 6 WIRE NOZZLE EXTENSION

6-WIRE NOZZLE EXTENSIONS 1/2"

WNE-412	4"	1/2" X 4" 6 WIRE NOZZLE EXTENSION
WNE-612	6"	1/2" X 6" 6 WIRE NOZZLE EXTENSION

4-WIRE NOZZLE EXTENSIONS 1"

W4-1	4"	1" X 4" 4 WIRE NOZZLE EXTENSION
W6-1	6"	1" X 6" 4 WIRE NOZZLE EXTENSION
W8-1	8"	1" X 8" 4 WIRE NOZZLE EXTENSION
W10-1	10"	1" X 10" 4 WIRE NOZZLE EXTENSION
W12-1	12"	1" X 12" 4 WIRE NOZZLE EXTENSION

4-WIRE NOZZLE EXTENSIONS 3/4"

W4-34	4"	3/4" X 4" 4 WIRE NOZZLE EXTENSION
W6-34	6"	3/4" X 6" 4 WIRE NOZZLE EXTENSION
W8-34	8"	3/4" X 8" 4 WIRE NOZZLE EXTENSION
W10-34	10"	3/4" X 10" 4 WIRE NOZZLE EXTENSION
W12-34	12"	3/4" X 12" 4 WIRE NOZZLE EXTENSION



4-WIRE NOZZLE EXTENSIONS 1/2"

W4-12	4"	1/2" X 4" 4 WIRE NOZZLE EXTENSION
W6-12	6"	1/2" X 6" 4 WIRE NOZZLE EXTENSION
W8-12	8"	1/2" X 8" 4 WIRE NOZZLE EXTENSION
W10-12	10"	1/2" X 10" 4 WIRE NOZZLE EXTENSION

FOOTBALL STYLE NOZZLE EXTENSIONS 1"

NFL-41	4"	1" X 4" FOOTBALL NOZZLE EXTENSION
NFL-61	6"	1" X 6" FOOTBALL NOZZLE EXTENSION
NFL-81	8"	1" X 8" FOOTBALL NOZZLE EXTENSION
NFL-101	10"	1" X 10" FOOTBALL NOZZLE EXTENSION
NFL-121	12"	1" X 12" FOOTBALL NOZZLE EXTENSION
NFL-151	15"	1" X 15" FOOTBALL NOZZLE EXTENSION

FOOTBALL STYLE NOZZLE EXTENSIONS 3/4"

NFL-434	4"	3/4" X 4" FOOTBALL NOZZLE EXTENSION
NFL-634	6"	3/4" X 6" FOOTBALL NOZZLE EXTENSION
NFL-834	8"	3/4" X 8" FOOTBALL NOZZLE EXTENSION
NFL-1034	10"	3/4" X 10" FOOTBALL NOZZLE EXTENSION
NFL-1234	12"	3/4" X 12" FOOTBALL NOZZLE EXTENSION

FOOTBALL STYLE NOZZLE EXTENSIONS 1/2"

NFL-412	4"	1/2" X 4" FOOTBALL NOZZLE EXTENSION
NFL-612	6"	1/2" X 6" FOOTBALL NOZZLE EXTENSION
NFL-812	8"	1/2" X 8" FOOTBALL NOZZLE EXTENSION
NFL-1012	10"	1/2" X 10" FOOTBALL NOZZLE EXTENSION

SUPER SHORT 8" FOOTBALL STYLE NOZZLE EXTENSIONS FOR 1" HOSE

NFL-41SS	4"	4" FOOTBALL NOZZLE EXTENSION 8" LONG
NFL-61SS	6"	6" FOOTBALL NOZZLE EXTENSION 8" LONG
NFL-81SS	8"	8" FOOTBALL NOZZLE EXTENSION 8" LONG

FINNED NOZZLE EXTENSION WITH WHEELS 1"

WE-61	6"	1" WHEELED NOZZLE EXTENSION FOR 6" AND UP
WE-81	8"	1" WHEELED NOZZLE EXTENSION FOR 8" AND UP
WE-101	10"	1" WHEELED NOZZLE EXTENSION FOR 10" AND UP
WE-121	12"	1" WHEELED NOZZLE EXTENSION FOR 12" AND UP
WE-151	15"	1" WHEELED NOZZLE EXTENSION FOR 15" AND UP

FINNED NOZZLE EXTENSION WITH WHEELS 3/4"

WE-634	6"	3/4" WHEELED NOZZLE EXTENSION FOR 6" AND UP
WE-834	8"	3/4" WHEELED NOZZLE EXTENSION FOR 8" AND UP
WE-1034	10"	3/4" WHEELED NOZZLE EXTENSION FOR 10" AND UP
WE-1234	12"	3/4" WHEELED NOZZLE EXTENSION FOR 12" AND UP
WE-1534	15"	3/4" WHEELED NOZZLE EXTENSION FOR 15" AND UP

HEAVY DUTY TUBE STYLE EXTENSION (12" LONG)

TSE-1/2	8 lbs.	HEAVY DUTY TUBE STYLE NOZZLE EXTENSION 1/2"
TSE-3/4	9 lbs.	HEAVY DUTY TUBE STYLE NOZZLE EXTENSION 3/4"
TSE-1	10 lbs.	HEAVY DUTY TUBE STYLE NOZZLE EXTENSION 1"

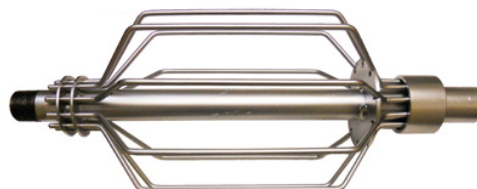
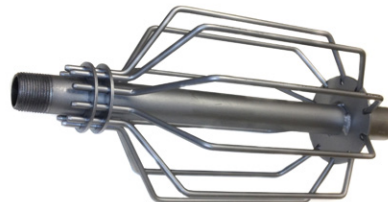
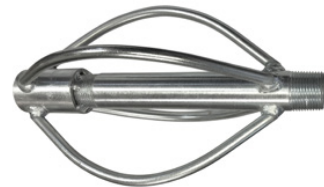
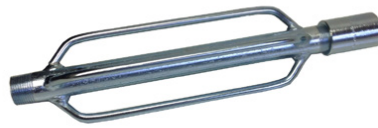
SHORT 10 LEG PROOFERS

S-6	6"	SHORT PROOFER 6" O.D. X 1"
S-7.5	7.5"	SHORT PROOFER 7.5" O.D. X 1"
S-8	8"	SHORT PROOFER 8" O.D. X 1"
S-9.5	9.5"	SHORT PROOFER 9" O.D. X 1"
S-10	10"	SHORT PROOFER 10" O.D. X 1"
S-11.5	11.5"	SHORT PROOFER 11.5" O.D. X 1"
S-12	12"	SHORT PROOFER 12" O.D. X 1"
S-15	15"	SHORT PROOFER 15" O.D. X 1"
S-18	18"	SHORT PROOFER 18" O.D. X 1"

FOR 3/4" PROOFER, ADD "34" AFTER PART NUMBER. SAME PRICE

LONG 10 LEG PROOFERS (REMOVABLE)

L-6	6"	LONG PROOFER 6" O.D. X 1"
L-7.5	7.5"	LONG PROOFER 7.5" O.D. X 1"
L-8	8"	LONG PROOFER 8" O.D. X 1"
L-9.5	9.5"	LONG PROOFER 9.5" O.D. X 1"
L-10	10"	LONG PROOFER 10" O.D. X 1"
L-11.5	11.5"	LONG PROOFER 11.5" O.D. X 1"
L-12	12"	LONG PROOFER 12" O.D. X 1"
L-15	15"	LONG PROOFER 15" O.D. X 1"
L-18	18"	LONG PROOFER 18" O.D. X 1"



SECTIONAL AND CONTINUOUS ROD, TOOLS AND ACCESSORIES

ADAPTER RODS

AR-1-1	5/16"
AR-1-2	3/8"
AR-1-SS	5/16"
AR-1-2SS	3/8"

ADAPTER ROD
ADAPTER ROD
SUPER SHORT
SUPER SHORT



PREMIUM PUMA RODS

STR-1-1	5/16" X 36"
STR-1-2	5/16" X 39"
STR-1-3	5/16" X 48"
STR-1-4	5/16" X 60"
STR-1-5	5/16" X 72"
STR-1-6	3/8" X 36"
STR-1-7	3/8" X 39"
STR-1-8	3/8" X 48"
STR-1-9	3/8" X 60"
STR-1-10	3/8" X 72"

PREMIUM SEWER ROD COMPLETE WITH COUPLING
PREMIUM SEWER ROD COMPLETE WITH COUPLING
PREMIUM SEWER ROD COMPLETE WITH COUPLING
PREMIUM SEWER ROD COMPLETE WITH COUPLING
PREMIUM SEWER ROD COMPLETE WITH COUPLING
PREMIUM SEWER ROD COMPLETE WITH COUPLING
PREMIUM SEWER ROD COMPLETE WITH COUPLING
PREMIUM SEWER ROD COMPLETE WITH COUPLING
PREMIUM SEWER ROD COMPLETE WITH COUPLING
PREMIUM SEWER ROD COMPLETE WITH COUPLING



PUMA SILVER RODS

STB-1-1	5/16" X 36"
STB-1-2	5/16" X 39"
STB-1-3	5/16" X 48"
STB-1-4	5/16" X 60"
STB-1-5	5/16" X 72"
STB-1-6	3/8" X 36"
STB-1-7	3/8" X 39"
STB-1-8	3/8" X 48"
STB-1-9	3/8" X 60"
STB-1-10	3/8" X 72"

SEWER ROD COMPLETE WITH COUPLING
SEWER ROD COMPLETE WITH COUPLING
SEWER ROD COMPLETE WITH COUPLING
SEWER ROD COMPLETE WITH COUPLING
SEWER ROD COMPLETE WITH COUPLING
SEWER ROD COMPLETE WITH COUPLING
SEWER ROD COMPLETE WITH COUPLING
SEWER ROD COMPLETE WITH COUPLING
SEWER ROD COMPLETE WITH COUPLING
SEWER ROD COMPLETE WITH COUPLING



QUICK COUPLE RODS

ALL 5/16" RODS ARE AVAILABLE WITH QUICK CONNECT DISCONNECT SPRING LOADED PIN COUPLINGS.
PLEASE ADD "R" TO PART NUMBER AND ADD \$10.00 TO EACH ROD OR TOOL



ROD TOOLS

PICK UP TOOLS

P1-1	5/16"
P1-2	3/8"
P1-3	

PICK UP TOOL FOR SECTIONAL ROD
PICK UP TOOL FOR SECTIONAL ROD
PICK UP TOOL FOR CONTINUOUS ROD



SPEAR HEADS

B2-1	2"
B2-2	2"
B4-1	4"
B4-2	4"

SPEAR HEAD WITH 5/16" ADAPTER ROD AND COUPLING
SPEAR HEAD WITH 3/8" ADAPTER ROD AND COUPLING
SPEAR HEAD WITH 5/16" ADAPTER ROD AND COUPLING
SPEAR HEAD WITH 3/8" ADAPTER ROD AND COUPLING

ASSEMBLY TOOLS

T1-1	5/16"
T1-2	3/8"

ASSEMBLY WRENCH
ASSEMBLY WRENCH

T2-1	5/16"
T2-2	3/8"

ASSEMBLY TURNING HANDLE
ASSEMBLY TURNING HANDLE

PULL OUT AND TURNING TOOLS

T3-1	5/16"
T3-2	3/8"

PULL OUT TOOL
PULL OUT TOOL

T4-1	5/16"
T4-2	3/8"

PULL OUT & TWISTING HANDLE
PULL OUT & TWISTING HANDLE

T5-1

BAR TURNING HANDLE FOR 5/16" AND 3/8"



T8	1/4" - 3/8"	ROUND ROD PULL-OUT FITS TOOLS 1/4" TO 3/8"
T11	5/16"	ROD TURNING RATCHET SINGLE FOR 5/16" RODS
T12	5/16"	ROD TURNING RATCHET ONE MAN DOUBLE
T13	3/8"	ROD TURNING RATCHET SINGLE FOR 3/8" RODS
T14	3/8"	ROD TURNING RATCHET ONE MAN DOUBLE

SPECIAL BORING TOOLS

T6-1	5/16"	LOOP SWIVEL TOOL
T6-2	3/8"	LOOP SWIVEL TOOL
T7-1	5/16"	SAND LEADER WITH ADAPTER ROD & COUPLING
T7-2	3/8"	SAND LEADER WITH ADAPTER ROD & COUPLING
T9-1	5/16"	BULLET TOOL WITH ADAPTER ROD
T9-2	3/8"	BULLET TOOL WITH ADAPTER ROD
T10-1	5/16"	PILOT BULLET TOOL WITH PULLOUT SWIVEL WITH ADAPTER ROD
T10-2	3/8"	PILOT BULLET TOOL WITH PULLOUT SWIVEL WITH ADAPTER ROD
T15-1	5/16"	"WINTERS" ROOT SAW COUPLING. COMBINE WITH ANY 2 ROOT SAW
T15-2	3/8"	"WINTERS" ROOT SAW COUPLING. COMBINE WITH ANY 2 ROOT SAW

CONTINUOUS ROD TOOLS SEE NOTE:

FOR ANY TOOL WITH SET SCREW COUPLING ADD "SS" AND EITHER 3 FOR .375, 4 FOR .393, 5 FOR .415 OR 6 FOR .461.
USE 3/8" PRICE FOR EXAMPLE: T9-SS-3 BULLET TOOL WITH .375 SET SCREW COUPLING.

CLEANING TOOLS

ROUND WIRE CORKSCREWS

F1-1	1-1/2"	USE WITH 5/16" ROD
F1-2	1-1/2"	USE WITH 3/8" ROD
F2-1	2"	USE WITH 5/16" ROD
F2-2	2"	USE WITH 3/8" ROD
F3-1	3"	USE WITH 5/16" ROD
F3-1	3"	USE WITH 3/8" ROD
F4-1	3-1/2"	USE WITH 5/16" ROD
F4-2	3-1/2"	USE WITH 3/8" ROD
F5-1	5"	USE WITH 5/16" ADAPTER ROD
F5-2	5"	USE WITH 3/8" ROD
F6-1	6"	USE WITH 5/16" ADAPTER ROD
F6-2	6"	USE WITH 3/8" ROD

DOUBLE ROUND WIRE CORKSCREWS

FD3-1	3"	USE WITH 5/16" ROD
FD3-2	3"	USE WITH 3/8" ROD
FD4-1	4"	USE WITH 5/16" ROD
FD4-2	4"	USE WITH 3/8" ROD
FD6-1	6"	USE WITH 5/16" ROD
FD6-2	6"	USE WITH 3/8" ROD

SAND CORKSCREWS

G-3-1	3"	SAND CORKSCREW USE WITH 5/16" ROD
G-3-2	3"	SAND CORKSCREW USE WITH 3/8" ROD

NOTE: For any cleaning tool you can buy the tool only less the coupling and adapter rod by adding a "B" after the part number

AUGERS

A2-1	2"	AUGER FOR 5/16" ROD
A2-2	2"	AUGER FOR 3/8" ROD
A3-1	3"	AUGER FOR 5/16" ROD
A3-2	3"	AUGER FOR 3/8" ROD
A4-1	4"	AUGER FOR 5/16" ROD
A4-2	4"	AUGER FOR 3/8" ROD
A5-1	5"	AUGER FOR 5/16" ROD
A5-2	5"	AUGER FOR 3/8" ROD
A6-1	6"	AUGER FOR 5/16" ROD
A6-2	6"	AUGER FOR 3/8" ROD
A8-1	8"	AUGER FOR 5/16" ROD
A8-2	8"	AUGER FOR 3/8" ROD
A10-1	10"	AUGER FOR 5/16" ROD
A10-2	10"	AUGER FOR 3/8" ROD



Set Screw Ends: For Set Screw Coupling Add "SS" and Either 3 for .375, 4 for .393, 5 for .415 or 6 for .461 rod. **Direct Hook Ends:** For Direct Hook End Add "DH" and Either 3 for .375, 4 for .393, 5 for .415 or 6 for .461 rod.

SQUARE BAR CORKSCREWS

E2-1	2"	SQUARE BAR CORKSCREW FOR 5/16" ROD
E2-2	2"	SQUARE BAR CORKSCREW FOR 3/8" ROD
E3-1	3"	SQUARE BAR CORKSCREW FOR 5/16" ROD
E3-2	3"	SQUARE BAR CORKSCREW FOR 3/8" ROD
E4-1	4"	SQUARE BAR CORKSCREW FOR 5/16" ROD
E4-2	4"	SQUARE BAR CORKSCREW FOR 3/8" ROD
E5-1	5"	SQUARE BAR CORKSCREW FOR 5/16" ROD
E5-2	5"	SQUARE BAR CORKSCREW FOR 3/8" ROD
E6-1	6"	SQUARE BAR CORKSCREW FOR 5/16" ROD
E6-2	6"	SQUARE BAR CORKSCREW FOR 3/8" ROD
E8-1	8"	SQUARE BAR CORKSCREW FOR 5/16" ROD
E8-2	8"	SQUARE BAR CORKSCREW FOR 3/8" ROD
E8-4	8" HD	8" HD SQUARE BAR CORKSCREW FOR 5/16"
E8-5	8" HD	8" HD SQUARE BAR CORKSCREW FOR 3/8"
E10-1	10"	SQUARE BAR CORKSCREW FOR 5/16" ROD
E10-2	10"	SQUARE BAR CORKSCREW FOR 3/8" ROD
E12-1	12"	SQUARE BAR CORKSCREW FOR 5/16" ROD
E12-2	12"	SQUARE BAR CORKSCREW FOR 3/8" ROD

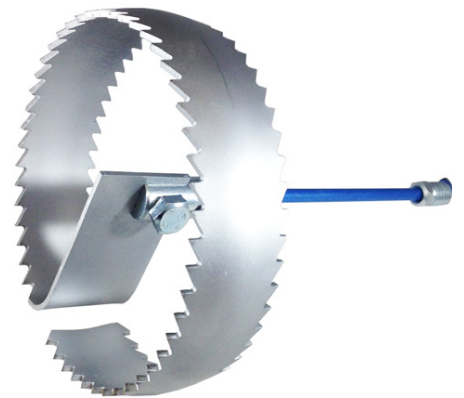


Set Screw Ends: For Set Screw Coupling Add "SS" and Either 3 for .375, 4 for .393, 5 for .415 or 6 for .461 rod. **Direct Hook Ends:** For Direct Hook End Add "DH" and Either 3 for .375, 4 for .393, 5 for .415 or 6 for .461 rod.

ROOT SAWS

STANDARD DUTY CONCAVE ROOT SAW

CRS-3-1	3"	CONCAVE ROOT SAW FOR 5/16" ROD
CRS-3-2	3"	CONCAVE ROOT SAW FOR 3/8" ROD
CRS-4-1	4"	CONCAVE ROOT SAW FOR 5/16" ROD
CRS-4-2	4"	CONCAVE ROOT SAW FOR 3/8" ROD
CRS-5-1	5"	CONCAVE ROOT SAW FOR 5/16" ROD
CRS-5-2	5"	CONCAVE ROOT SAW FOR 3/8" ROD
CRS-6-1	6"	CONCAVE ROOT SAW FOR 5/16" ROD
CRS-6-2	6"	CONCAVE ROOT SAW FOR 3/8" ROD
CRS-8-1	8"	CONCAVE ROOT SAW FOR 5/16" ROD
CRS-8-2	8"	CONCAVE ROOT SAW FOR 3/8" ROD
CRS-10-1	10"	CONCAVE ROOT SAW FOR 5/16" ROD
CRS-10-2	10"	CONCAVE ROOT SAW FOR 3/8" ROD
CRS-12-1	12"	CONCAVE ROOT SAW FOR 5/16" ROD
CRS-12-2	12"	CONCAVE ROOT SAW FOR 3/8" ROD
CRS-15-1	15"	CONCAVE ROOT SAW FOR 5/16" ROD
CRS-15-2	15"	CONCAVE ROOT SAW FOR 3/8" ROD



Set Screw Ends: For Set Screw Coupling Add "SS" and Either 3 for .375, 4 for .393, 5 for .415 or 6 for .461 rod. **Direct Hook Ends:** For Direct Hook End Add "DH" and Either 3 for .375, 4 for .393, 5 for .415 or 6 for .461 rod.

NOTE: For any cleaning tool you can buy the tool only less the coupling and adapter rod by adding a "B" after the part number

STANDARD DUTY FLAT ROOT SAWS

FRS-3-1	3"	STANDARD FLAT ROOT SAW FOR 5/16" ROD
FRS-3-2	3"	STANDARD FLAT ROOT SAW FOR 3/8" ROD
FRS-4-1	4"	STANDARD FLAT ROOT SAW FOR 5/16" ROD
FRS-4-2	4"	STANDARD FLAT ROOT SAW FOR 3/8" ROD
FRS-6-1	6"	STANDARD FLAT ROOT SAW FOR 5/16" ROD
FRS-6-2	6"	STANDARD FLAT ROOT SAW FOR 3/8" ROD
FRS-8-1	8"	STANDARD FLAT ROOT SAW FOR 5/16" ROD
FRS-8-2	8"	STANDARD FLAT ROOT SAW FOR 3/8" ROD
FRS-10-1	10"	STANDARD FLAT ROOT SAW FOR 5/16" ROD
FRS-10-2	10"	STANDARD FLAT ROOT SAW FOR 3/8" ROD
FRS-12-1	12"	STANDARD FLAT ROOT SAW FOR 5/16" ROD
FRS-12-2	12"	STANDARD FLAT ROOT SAW FOR 3/8" ROD
FRS-15-1	15"	STANDARD FLAT ROOT SAW FOR 5/16" ROD
FRS-15-2	15"	STANDARD FLAT ROOT SAW FOR 3/8" ROD



Set Screw Ends: For Set Screw Coupling Add "SS" and Either 3 for .375, 4 for .393, 5 for .415 or 6 for .461 rod. **Direct Hook Ends:** For Direct Hook End Add "DH" and Either 3 for .375, 4 for .393, 5 for .415 or 6 for .461 rod.

HEAVY DUTY CONCAVE ROOT SAWS

HCRS-3-1	3"	CONCAVE ROOT SAW FOR 5/16" ROD HD
HCRS-3-2	3"	CONCAVE ROOT SAW FOR 3/8" ROD HD
HCRS-4-1	4"	CONCAVE ROOT SAW FOR 5/16" ROD HD
HCRS-4-2	4"	CONCAVE ROOT SAW FOR 3/8" ROD HD
HCRS-5-1	5"	CONCAVE ROOT SAW FOR 5/16" ROD HD
HCRS-5-2	5"	CONCAVE ROOT SAW FOR 3/8" ROD HD
HCRS-6-1	6"	CONCAVE ROOT SAW FOR 5/16" ROD HD
HCRS-6-2	6"	CONCAVE ROOT SAW FOR 3/8" ROD HD
HCRS-8-1	8"	CONCAVE ROOT SAW FOR 5/16" ROD HD
HCRS-8-2	8"	CONCAVE ROOT SAW FOR 3/8" ROD HD
HCRS-10-1	10"	CONCAVE ROOT SAW FOR 5/16" ROD HD
HCRS-10-2	10"	CONCAVE ROOT SAW FOR 3/8" ROD HD
HCRS-12-1	12"	CONCAVE ROOT SAW FOR 5/16" ROD HD
HCRS-12-2	12"	CONCAVE ROOT SAW FOR 3/8" ROD HD
HCRS-15-1	15"	CONCAVE ROOT SAW FOR 5/16" ROD HD
HCRS-15-2	15"	CONCAVE ROOT SAW FOR 3/8" ROD HD
HCRS-18-1	18"	CONCAVE ROOT SAW FOR 5/16" ROD HD
HCRS-18-2	18"	CONCAVE ROOT SAW FOR 3/8" ROD HD
HCRS-20-1	20"	CONCAVE ROOT SAW FOR 5/16" ROD HD
HCRS-20-2	20"	CONCAVE ROOT SAW FOR 3/8" ROD



Set Screw Ends: For Set Screw Coupling Add "SS" and Either 3 for .375, 4 for .393, 5 for .415 or 6 for .461 rod. **Direct Hook Ends:** For Direct Hook End Add "DH" and Either 3 for .375, 4 for .393, 5 for .415 or 6 for .461 rod.

HEAVY DUTY FLAT ROOT SAWS

HFRS-3-1	3"	HD FLAT ROOT SAW FOR 5/16" ROD
HFRS-3-2	3"	HD FLAT ROOT SAW FOR 3/8" ROD
HFRS-4-1	4"	HD FLAT ROOT SAW FOR 5/16" ROD
HFRS-4-2	4"	HD FLAT ROOT SAW FOR 3/8" ROD
HFRS-5-1	5"	HD FLAT ROOT SAW FOR 5/16" ROD
HFRS-5-2	5"	HD FLAT ROOT SAW FOR 3/8" ROD
HFRS-6-1	6"	HD FLAT ROOT SAW FOR 5/16" ROD
HFRS-6-2	6"	HD FLAT ROOT SAW FOR 3/8" ROD
HFRS-8-1	8"	HD FLAT ROOT SAW FOR 5/16" ROD
HFRS-8-2	8"	HD FLAT ROOT SAW FOR 3/8" ROD
HFRS-10-1	10"	HD FLAT ROOT SAW FOR 5/16" ROD
HFRS-10-2	10"	HD FLAT ROOT SAW FOR 3/8" ROD
HFRS-12-1	12"	HD FLAT ROOT SAW FOR 5/16" ROD
HFRS-12-2	12"	HD FLAT ROOT SAW FOR 3/8" ROD
HFRS-15-1	15"	HD FLAT ROOT SAW FOR 5/16" ROD
HFRS-15-2	15"	HD FLAT ROOT SAW FOR 3/8" ROD
HFRS-18-1	18"	HD FLAT ROOT SAW FOR 5/16" ROD
HFRS-18-2	18"	HD FLAT ROOT SAW FOR 3/8" ROD
HFRS-20-1	20"	HD FLAT ROOT SAW FOR 5/16" ROD
HFRS-20-2	20"	HD FLAT ROOT SAW FOR 3/8" ROD



Set Screw Ends: For Set Screw Coupling Add "SS" and Either 3 for .375, 4 for .393, 5 for .415 or 6 for .461 rod. **Direct Hook Ends:** For Direct Hook End Add "DH" and Either 3 for .375, 4 for .393, 5 for .415 or 6 for .461 rod.

ROOT SAW BLADES ONLY

STANDARD CONCAVE ROOT SAW BLADES 1/8" THICK

CRS-3B	3"	CONCAVE ROOT SAW BLADE ONLY
CRS-4B	4"	CONCAVE ROOT SAW BLADE ONLY
CRS-5B	5"	CONCAVE ROOT SAW BLADE ONLY
CRS-6B	6"	CONCAVE ROOT SAW BLADE ONLY
CRS-8B	8"	CONCAVE ROOT SAW BLADE ONLY
CRS-10B	10"	CONCAVE ROOT SAW BLADE ONLY
CRS-12B	12"	CONCAVE ROOT SAW BLADE ONLY

ANY SAW IS AVAILABLE WITH A WELDED ON 1" ARBOR HUB FOR \$60.00 ADD "WH" TO PART NUMBER



STANDARD FLAT ROOT SAW BLADES 1/8" THICK

FRS-3B	3"	STANDARD FLAT ROOT SAW BLADE ONLY
FRS-4B	4"	STANDARD FLAT ROOT SAW BLADE ONLY
FRS-6B	6"	STANDARD FLAT ROOT SAW BLADE ONLY
FRS-8B	8"	STANDARD FLAT ROOT SAW BLADE ONLY
FRS-10B	10"	STANDARD FLAT ROOT SAW BLADE ONLY
FRS-12B	12"	STANDARD FLAT ROOT SAW BLADE ONLY

ANY SAW IS AVAILABLE WITH A WELDED ON 1" ARBOR HUB FOR \$60.00 ADD "WH" TO PART NUMBER



HEAVY DUTY CONCAVE ROOT SAW BLADES 3/16" THICK

HCRS-3B	3"	HD CONCAVE ROOT SAW BLADE ONLY
HCRS-4B	4"	HD CONCAVE ROOT SAW BLADE ONLY
HCRS-5B	5"	HD CONCAVE ROOT SAW BLADE ONLY
HCRS-6B	6"	HD CONCAVE ROOT SAW BLADE ONLY
HCRS-8B	8"	HD CONCAVE ROOT SAW BLADE ONLY
HCRS-10B	10"	HD CONCAVE ROOT SAW BLADE ONLY
HCRS-12B	12"	HD CONCAVE ROOT SAW BLADE ONLY
HCRS-15B	15"	HD CONCAVE ROOT SAW BLADE ONLY
HCRS-18B	18"	HD CONCAVE ROOT SAW BLADE ONLY
HCRS-20B	20"	HD CONCAVE ROOT SAW BLADE ONLY

ANY SAW IS AVAILABLE WITH A WELDED ON 1" ARBOR HUB FOR \$60.00 ADD "WH" TO PART NUMBER



HEAVY DUTY FLAT ROOT SAW BLADES 3/16" THICK

HFRS-3B	3"	HD FLAT ROOT SAW BLADE ONLY
HFRS-4B	4"	HD FLAT ROOT SAW BLADE ONLY
HFRS-5B	5"	HD FLAT ROOT SAW BLADE ONLY
HFRS-6B	6"	HD FLAT ROOT SAW BLADE ONLY
HFRS-8B	8"	HD FLAT ROOT SAW BLADE ONLY
HFRS-10B	10"	HD FLAT ROOT SAW BLADE ONLY
HFRS-12B	12"	HD FLAT ROOT SAW BLADE ONLY
HFRS-15B	15"	HD FLAT ROOT SAW BLADE ONLY
HFRS-18B	18"	HD FLAT ROOT SAW BLADE ONLY
HFRS-20B	20"	HD FLAT ROOT SAW BLADE ONLY

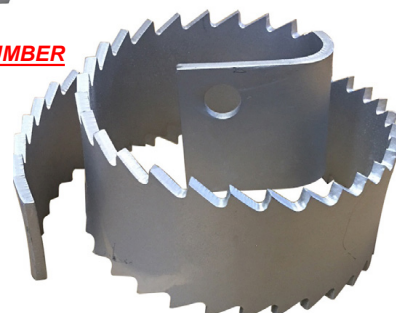
ANY SAW IS AVAILABLE WITH A WELDED ON 1" ARBOR HUB FOR \$60.00 ADD "WH" TO PART NUMBER



SPIRAL ROOT SAW BLADES 5/32" THICK

SRS-4B	4"	SPIRAL ROOT SAW FOR 4" PIPE BLADE ONLY
SRS-6B	6"	SPIRAL ROOT SAW FOR 6" PIPE BLADE ONLY
SRS-8B	8"	SPIRAL ROOT SAW FOR 8" PIPE BLADE ONLY
SRS-10B	10"	SPIRAL ROOT SAW FOR 10" PIPE BLADE ONLY
SRS-12B	12"	SPIRAL ROOT SAW FOR 12" PIPE BLADE ONLY
SRS-15B	15"	SPIRAL ROOT SAW FOR 15" PIPE BLADE ONLY
SRS-18B	18"	SPIRAL ROOT SAW FOR 18" PIPE BLADE ONLY

ANY SAW IS AVAILABLE WITH A WELDED ON 1" ARBOR HUB FOR \$60.00 ADD "WH" TO PART NUMBER



COLORADO STYLE SAW BLADE 3/16" THICK

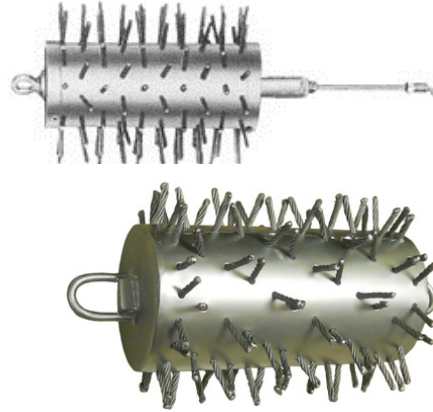
H-CRS-7C	7"	OVERLAP COLORADO WHITE SAW
----------	----	----------------------------



ADDITIONAL CLEANING TOOLS

PORCUPINES

D-4-1	4"	PORCUPINE TURN TYPE FOR 5/16" ROD
D-4-2	4"	PORCUPINE TURN TYPE FOR 3/8" ROD
D-6-1	6"	PORCUPINE TURN TYPE FOR 5/16" ROD
D-6-2	6"	PORCUPINE TURN TYPE FOR 3/8" ROD
D-8-1	8"	PORCUPINE TURN TYPE FOR 5/16" ROD
D-8-2	8"	PORCUPINE TURN TYPE FOR 3/8" ROD
D-10-1	10"	PORCUPINE TURN TYPE FOR 5/16" ROD
D-10-2	10"	PORCUPINE TURN TYPE FOR 3/8" ROD
D-12-1	12"	PORCUPINE TURN TYPE FOR 5/16" ROD
D-12-2	12"	PORCUPINE TURN TYPE FOR 3/8" ROD
D-15-1	15"	PORCUPINE TURN TYPE FOR 5/16" ROD
D-15-2	15"	PORCUPINE TURN TYPE FOR 3/8" ROD
D-18-1	18"	PORCUPINE TURN TYPE FOR 5/16" ROD
D-18-2	18"	PORCUPINE TURN TYPE FOR 3/8" ROD



ALSO AVAILABLE IN PULL TYPE. PP-6, PP-8, PP-10 ETC... SAME PRICE

SEWER BRUSH FOR SWABBING / FINISHING LINE

C-4-1	4"	STEEL SEWER BRUSH FOR 5/16" ROD
C-4-2	4"	STEEL SEWER BRUSH FOR 3/8" ROD
C-6-1	6"	STEEL SEWER BRUSH FOR 5/16" ROD
C-6-2	6"	STEEL SEWER BRUSH FOR 3/8" ROD
C-8-1	8"	STEEL SEWER BRUSH FOR 5/16" ROD
C-8-2	8"	STEEL SEWER BRUSH FOR 3/8" ROD
C-10-1	10"	STEEL SEWER BRUSH FOR 5/16" ROD
C-10-2	10"	STEEL SEWER BRUSH FOR 3/8" ROD
C-12-1	12"	STEEL SEWER BRUSH FOR 5/16" ROD
C-12-2	12"	STEEL SEWER BRUSH FOR 3/8" ROD



3 BLADE CUTTERS CHUCKS

CH-1-1	5/16"	CHUCK WITH ADAPTER ROD
CH-1-2	3/8"	CHUCK WITH ADAPTER ROD
CH-1-3	.375	CHUCK WITH SET SCREW CONNECTION
CH-1-4	.393	CHUCK WITH SET SCREW CONNECTION
CH-1-5	.415	CHUCK WITH SET SCREW CONNECTION
CH-1-6	.461	CHUCK WITH SET SCREW CONNECTION

SELECT CURVED BLADE FOR 3 BLADE CUTTER

CB-4	4"	CURVED BLADE FOR 3 BLADE CHUCK. PRICE PER BLADE
CB-6	6"	CURVED BLADE FOR 3 BLADE CHUCK. PRICE PER BLADE
CB-8	8"	CURVED BLADE FOR 3 BLADE CHUCK. PRICE PER BLADE
CB-10	10"	CURVED BLADE FOR 3 BLADE CHUCK. PRICE PER BLADE
CB-12	12"	CURVED BLADE FOR 3 BLADE CHUCK. PRICE PER BLADE
CB-15	15"	CURVED BLADE FOR 3 BLADE CHUCK. PRICE PER BLADE
CB-18	18"	CURVED BLADE FOR 3 BLADE CHUCK. PRICE PER BLADE

FOR FULL SIZE ADD "FS" AND \$2.00 TO EACH BLADE



SELECT FLAT BLADES FOR 3 BLADE CUTTER

FB-4	4"	FLAT BLADE FOR 3 BLADE CHUCK. PRICE PER BLADE
FB-6	6"	FLAT BLADE FOR 3 BLADE CHUCK. PRICE PER BLADE
FB-8	8"	FLAT BLADE FOR 3 BLADE CHUCK. PRICE PER BLADE
FB-10	10"	FLAT BLADE FOR 3 BLADE CHUCK. PRICE PER BLADE
FB-12	12"	FLAT BLADE FOR 3 BLADE CHUCK. PRICE PER BLADE
FB-15	15"	FLAT BLADE FOR 3 BLADE CHUCK. PRICE PER BLADE
FB-18	18"	FLAT BLADE FOR 3 BLADE CHUCK. PRICE PER BLADE



POWER ROD DRIVE TRAILER AND ACCESSORIES

POWER DRIVES

SPD-3	3 HP	Power Drive Units Include Speed-Chuck, Specify 5/16" or 3/8"
SPD-6.5	6.5 HP	Power Drive Units Include Speed-Chuck, Specify 5/16" or 3/8"
SPD-8	8 HP	Power Drive Units Include Speed-Chuck, Specify 5/16" or 3/8"
SPD-8H	8 HP	Honda Engine



RR-1-1	Rod reel. Made from 1/2" round bar. 500' capacity. Can be used with either the tripod steel stand or trailer type
RR-1-2	Rod reel stand street type. Guide tube with articulated elbow. 3 legs support the reel at perfect angle for pay-out



RR-1-3	Rod reel stand trailer type. Same guide tube but the mounting plate to attach to trailer. Also can be modified to fit your truck
--------	--



RR-1-4	Lower manhole rigid rod guide. Connects to 1.5" pipe to allow the rods to enter the sewer at the correct angle
--------	--

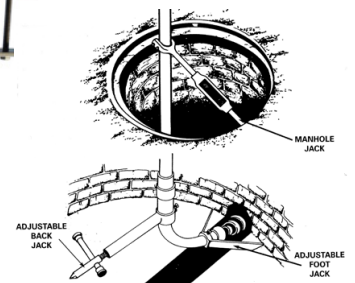
RR-1-5	Foot jack support. Keeps pressure in the guide system by supporting the guide against back wall of manhole
--------	--



RR-1-6	Back jack support. Keeps pressure in the guide system by supporting the guide against back wall of manhole
--------	--



RR-1-7	Manhole jack support. Used to support the 1.5" guide tube against the manhole ring
--------	--



RR-1-8	Complete manhole set-up kit with 21' of galvanized. Comes with 21' of pipe in sections and RR1-4, RR1-5, RR1-6, and RR1-7
--------	---

H-10-1	Carry all trailer. Can carry all your tools, rods and powerdrive to the job site. Includes a lockable and an open tool box. Comes with a standard 2" ball hitch and swivel 3rd wheel
--------	--

H-11-1	Stop, tail & turning lights
--------	-----------------------------

H-12-1	Pintle ring hitch
--------	-------------------

H-13-1	Electric brakes
--------	-----------------



CONTINUOUS ROD AND RODDER ACCESSORIES

CONTINUOUS ROD GUIDE HOSES

LW-7	7'	Lightweight Hose Guide With Flex-Metallic Liner
LW-10	10'	Lightweight Hose Guide With Flex-Metallic Liner
LW-15	15'	Lightweight Hose Guide With Flex-Metallic Liner
LW-18	18'	Lightweight Hose Guide With Flex-Metallic Liner
LW-20	20'	Lightweight Hose Guide With Flex-Metallic Liner
LW-22	22'	Lightweight Hose Guide With Flex-Metallic Liner
LW-24	24'	Lightweight Hose Guide With Flex-Metallic Liner
LW-25	25'	Lightweight Hose Guide With Flex-Metallic Liner
HD-7	7'	Heavy Duty Hose Guide With Metallic Liner
HD-10	10'	Heavy Duty Hose Guide With Metallic Liner
HD-15	15'	Heavy Duty Hose Guide With Metallic Liner
HD-18	18'	Heavy Duty Hose Guide With Metallic Liner
HD-20	20'	Heavy Duty Hose Guide With Metallic Liner
HD-22	22'	Heavy Duty Hose Guide With Metallic Liner
HD-24	24'	Heavy Duty Hose Guide With Metallic Liner
HD-25	25'	Heavy Duty Hose Guide With Metallic Liner
HDS-7	7'	Heavy Duty Hose Guide With Heavy Duty Steel Spring Liner
HDS-10	10'	Heavy Duty Hose Guide With Heavy Duty Steel Spring Liner
HDS-15	15'	Heavy Duty Hose Guide With Heavy Duty Steel Spring Liner
HDS-18	18'	Heavy Duty Hose Guide With Heavy Duty Steel Spring Liner
HDS-20	20'	Heavy Duty Hose Guide With Heavy Duty Steel Spring Liner
HDS-22	22'	Heavy Duty Hose Guide With Heavy Duty Steel Spring Liner
HDS-24	24'	Heavy Duty Hose Guide With Heavy Duty Steel Spring Liner
HDS-25	25'	Heavy Duty Hose Guide With Heavy Duty Steel Spring Liner
LW-15BF	15'	Below Freezing Hose Guide With Flex-Metallic Liner
LW-18BF	18'	Below Freezing Hose Guide With Flex-Metallic Liner
LW-20BF	20'	Below Freezing Hose Guide With Flex-Metallic Liner
LW-22BF	22'	Below Freezing Hose Guide With Flex-Metallic Liner
LW-24BF	24'	Below Freezing Hose Guide With Flex-Metallic Liner
LW-25BF	25'	Below Freezing Hose Guide With Flex-Metallic Liner



SPECIAL HD

CAM-LOCK ENDS

With 2" heavy duty iron Cam-Lock fitting male end
add "MI" to part number or add female end add "FI" to part number

Example: 7' light rod guide hose with male 2": heavy duty iron Cam Lock fittings part No. LW-7MI \$535.00 + \$120.00 = \$655.00

STEEL ENDS*

**ANY ABOVE HOSE CAN BE ORDERED WITH STEEL ENDS
BY ADDING "SE" TO PART NUMBER AND ADDING \$150.00,
COMES WITH FEMALE END FOR HOSE GUIDE BELL AND
STEEL MALE END FOR RODDING MACHINE**

HGB	HOSE GUIDE BELL
SPB	SINGLE PRONG BRACE WITH CHAIN AND ROPE
SPR	SINGLE PRONG BRACE WITH RING AND ROPE
HGS	HOSE GUIDE STAND
SME	STEEL MALE END
SME-1M	STEEL MALE END WITH STEEL 2" CAMLOCK
SFE	STEEL FEMALE FOR BELL FOR HOSE GUIDE BELL
SCL-1	STEEL FEMALE X FEMALE STRAIGHT COUPLER
SCL-2	SET OF CLAMPS FOR ATTACHED STEEL ENDS TO HOSE
SCL-3	ALUMINUM BELL END FOR GUIDE HOSE
SCL-4	ALUMINUM MALE END FOR GUIDE HOSE
SCL-5	INSERT GUIDE
SCL-6	LIGHTWEIGHT FLEX-METALLIC LINER AND LW HOSE (PER FOOT)
SCL-7	HEAVY DUTY HOSE WITH FLEX-METALLIC LINER (PER FOOT)
SCL-8	FLEX-METALLIC LINER ONLY (PER FOOT)



CONTINUOUS ROD

CONTINUOUS ROD PRICE PER FOOT

STC-1-2	0.375	Continuous Rod
STC-1-3	0.393	Continuous Rod
STC-1-4	0.415	Continuous Rod
STC-1-5	0.461	Continuous Rod



CONTINUOUS ROD TRANSFER RACK

CRTR-1 6 SPOKE HEAVY DUTY TRANSFER RACK. 6 SPOKE AND GUIDE ARM



ADAPTER COUPLINGS

ADAPTER COUPLINGS FOR CONNECTING CONTINUOUS ROD TO TOOLS

AC-1-1	0.375	Set screw type, to 3/8" COARSE RH THREAD
AC-1-2	0.393	Set screw type, to 3/8" COARSE RH THREAD
AC-1-4	0.461	Set screw type, to 3/8" COARSE RH THREAD
AC-2-1	0.375	Fine LH thread Hook , to 5/16" COARSE RH THREAD
AC-2-2	0.393	Fine LH thread Hook , to 5/16" COARSE RH THREAD
AC-2-4	0.461	Fine LH thread Hook , to 5/16" COARSE RH THREAD
AC-3-1	0.375	Set screw type, to 5/16" COARSE RH THREAD
AC-3-2	0.393	Set screw type, to 5/16" COARSE RH THREAD
AC-3-4	0.461	Set screw type, to 5/16" COARSE RH THREAD
AC-4-1	0.375	Fine LH thread hook , to 3/8" COARSE RH THREAD
AC-4-2	0.393	Fine LH thread hook , to 3/8" COARSE RH THREAD
AC-4-4	0.461	Fine LH thread hook , to 3/8" COARSE RH THREAD



COUPLING NUTS

CN-1-1	5/16"	Course Thread Right Hand Nut
CN-1-2	5/16"	Fine Thread Left Hand Nut
CN-1-3	3/8"	Course Thread Right Hand Nut
CN-1-4	3/8"	Fine Thread Left Hand Nut
CN-1-5	0.375	Course Thread Right Hand Nut
CN-1-6	0.375	Fine Thread Left Hand Nut
CN-1-7	0.393	Course Thread Right Hand Nut
CN-1-8	0.393	Fine Thread Left Hand Nut
CN-1-11	0.461	Course Thread Right Hand Nut
CN-1-12	0.461	Fine Thread Left Hand Nut



COUPLINGS FOR SECTIONAL AND CONTINUOUS ROD

CC-1-1	5/16"
CC-1-2	3/8"

COUPLINGS FOR SQUARE STOCK CORKSCREW

CS-1-1	5/16"	To Be Used With Adapter Rods
CS-1-2	3/8"	To Be Used With Adapter Rods
CS-1-3	0.375	With Set Screw Connections
CS-1-4	0.393	With Set Screw Connections
CS-1-6	0.461	With Set Screw Connections
CS-1-7	0.375	With Hook Type Connection
CS-1-8	0.393	With Hook Type Connection
CS-1-10	0.461	With Hook Type Connection



COUPLINGS FOR STANDARD ROOT SAW

CR1-1	5/16"	To Be Used With Adapter Rods
CR1-2	3/8"	To Be Used With Adapter Rods
CR1-3	0.375	With Set Screw Connections
CR1-4	0.393	With Set Screw Connections
CR1-6	0.461	With Set Screw Connections
CR1-7	0.375	With Hook Type Connection
CR1-8	0.393	With Hook Type Connection
CR1-10	0.461	With Hook Type Connection



QUICK CONNECT COUPLINGS

QCP-1	5/16"	Quick Connect Female Coupling for 5/16" Rods
QCM-1	5/16"	Quick Connect Male Coupling for 5/16" Rods
QCF-2	1/4"	Quick Connect Female Coupling for 1/4" Rods
QCM-2	1/4"	Quick Connect Male Coupling for 1/4" Rods



COUPLINGS FOR HD ROOT SAWS

CRHD-1	5/16"	To Be Used With Adapter Rods
CRHD-2	3/8"	To Be Used With Adapter Rods
CRHD-3	0.375	With Set Screw Connections
CRHD-4	0.393	With Set Screw Connections
CRHD-6	0.461	With Set Screw Connections
CRHD-7	0.375	With Hook Type Connection
CRHD-8	0.393	With Hook Type Connection
CRHD-9	0.415	With Hook Type Connection
CRHD-10	0.461	With Hook Type Connection



COUPLINGS FOR AUGERS 2", 3" & 4"

CA-1-1	5/16"	To Be Used With Adapter Rods
CA-1-2	3/8"	To Be Used With Adapter Rods
CA-1-3	0.375	With Set Screw Connections
CA-1-4	0.393	With Set Screw Connections
CA-1-6	0.461	With Set Screw Connections
CA-1-7	0.375	With Hook Type Connection
CA-1-8	0.393	With Hook Type Connection
CA-1-9	0.415	With Hook Type Connection
CA-1-10	0.461	With Hook Type Connection



COUPLINGS FOR AUGERS 6", 10" AND UP

CA-2-1	5/16"	To Be Used With Adapter Rods
CA-2-2	3/8"	To Be Used With Adapter Rods
CA-2-3	0.375	With Set Screw Connections
CA-2-4	0.393	With Set Screw Connections
CA-2-6	0.461	With Set Screw Connections
CA-2-7	0.375	With Hook Type Connection
CA-2-8	0.393	With Hook Type Connection
CA-2-9	0.415	With Hook Type Connection
CA-2-10	0.461	With Hook Type Connection



NO.5 PLUMBER RODS

P5-13 1/4" X 6' No. 5 PLUMBERS RODS. HEX COUPLING AND 1/4" X 6' LONG

P5-1 ROD FRAME ONLY

P5-2 2" ROUND WIRE COILED CORKSCREW

P5-3 3" DOUBLE ROUND WIRE COILED CORKSCREW

P5-4 4" ROUND WIRE CORKSCREW

P5-5-2 2" ROOT CUTTER WITH SPADE BLADE

P5-5-3 3" ROOT CUTTER WITH SPADE BLADE

P5-5-4 4" ROOT CUTTER WITH SPADE BLADE

P5-6 2" SPEAR HEAD WITH COILED PIG TAIL

P5-7 PICK-UP TOOL WITH COILED PIG TAIL

P5-8 ASSEMBLY TOOL FOR NO. 5 RODS

P5-9 ELECTRIC DRILL ADAPTER

P5-10 PULL OUT TURNING HANDLE

P-5SET COMPLETE NO. 5 SET IS COMPRISED OF:

17 each P5-13 (1/4" x 6' rods), 1 each of P5-1 Rod Frame, 1 each of P5-2 2" Corkscrew, 1 each of P5-3 4" Double Corkscrew, 1 each of P5-4 4" Corkscrew, 1 each of P5-5-3 3" Root Cutter, 1 each of P5-6 Spear Head, 1 each of P5-7 Pick-Up Tool, 1 Each of P5-8 Assembly Tool, 1 each of P5-9 Electric Drill Adapter, 1 each of P5-10 Turning, Handle.

Add "B" to any tool above for a pig tail with a "B" nut, and Add \$3.00 Each



ADD "M" TO ANY ABOVE CLEANING TOOL FOR A 5/16" PIGTAIL FOR AN ADDITIONAL \$15.00 (LIST)

"B" PLUMBERS RODS AND TOOLS

PB-1 1/4" X 6' "B" ROD COMPLETE (ROUND COUPLING)

PB-2 PICK UP TOOL

PB-3 4" CORKSCREW

PB-4 2" CORKSCREW

PB-5-3 3" ROOT CUTTER

PB-5-4 4" ROOT CUTTER

PB-5-2 2" ROOT CUTTER

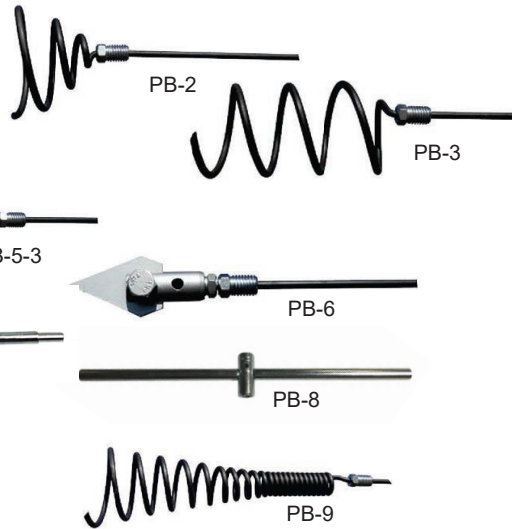
PB-6 2" SPEAR HEAD

PB-7 ASSEMBLY TOOL

PB-8 TURNING HANDLE

PB-9 4" TAPERED CORKSCREW (NOT IN SET)

PB-10 2" TAPERED CORKSCREW (NOT IN SET)



PB COMPLETE "B" PLUMBERS SET

SET INCLUDES 17 RODS AND 1 EACH OF ALL TOOLS ABOVE EXCEPT PB-9, PB-10 AND PB-5-2

SPECIAL COILED SPRING ITEMS

SSU-1 1" O.D. OF 1/4" WIRE X 12" LONG WITH RH X LH 5/16" NUTS

SSU-2 UNIVERSAL SPRINGS 1.25" DIA X 12" LONG WITH 5/16" LHXRH

SSCR-3 1" X 3' COILED ROD WITH RH X LH 5/16" NUTS

SCR-25 1" X 25' COILED ROD WITH 5/16" PIGS TAILS EACH SIDE

SCR-3A 1" X 3' COILED ROD WITH AUGER COUPLING X 5/16" PIG

PF-7 1" X 25' COILED ROD 1/4" PLUMBER TOOL MALE X FEMALE

PF-20M 1" X 3' LONG COILED ROD WITH 3" ROOT SAW X 5/16"

PF-21M 1" X 3' LONG COILED ROD WITH 4" ROOT SAW X 5/16"

PF-22M 1" X 3' LONG COILED ROD WITH 6" ROOT SAW X 5/16"

PF-8 1" FEMALE COILED ROD COUPLER

PF-9 1" MALE COILED ROD COUPLER



VALVES AND SWIVELS

VALVES

BHK-1-2 S-21 1" 2-WAY BALL VALVE 5000 PSI
BHK-3/4-2 S-234 3/4" 2-WAY BALL VALVE 5000 PSI
BHK-114-2 S-2125 1 1/4" 2-WAY BALL VALVE 5000 PSI
BHK-1-3 S-31 1" 3-WAY BALL VALVE 5000 PSI
BHK-3-3/4 S-334 3/4" 3-WAY BALL VALVE 5000 PSI



HOSE REEL SWIVELS

SSE-1E 1" 90° SWIVEL
SSE-12E 1 1/4" 90° SWIVEL
SSE-34E 3/4" 90° SWIVEL



MANHOLE HOOKS

POOK

DOUBLE SIDED PICK AND MANHOLE HOOK

This is the famous Pook that is well known in cities across America for those who want the toughest manhole hook. Hook and Pick combined to make a "Pook". One side of the 2 sided head is a sharp pick to chip away at asphalt or any other hard surface. The other side has a hook that has the perfect angle to fit in the hole and lift up any manhole lid. This complete unit is made from 4130 high carbon steel that is heat treated to exacting numbers. The handle is 3/4" thick!! Nice triangle flat against your palm. Powder coated safety orange



MSRH-1

MANHOLE HOOK, TRIANGLE HANDLE, 39" LONG, 90°

MSRH-2

MANHOLE HOOK, TRIANGLE HANDLE, 27" LONG, FLAT

MSRH-3

MANHOLE HOOK, TRIANGLE HANDLE, 39" LONG, FLAT

MSRT-1

"T" HANDLE MANHOLE HOOK, 39" LONG FLAT



SAND TRAPS

SST-6

6"

SAND TRAP WITH ROPE 25'

SST-8

8"

SAND TRAP WITH ROPE 25'

SST-10

10"

SAND TRAP WITH ROPE 25'

SST-12

12"

SAND TRAP WITH ROPE 25'

SST-15

15"

SAND TRAP WITH ROPE 25'

SST-18

18"

SAND TRAP WITH ROPE 25'

SST-20

20"

SAND TRAP WITH ROPE 25'



SPECIALTY TOOLS NOT OTHERWISE ACCOUNTED FOR

MAGNETIC VALVE BOX LIFTER

MVBL-1

The Valve Box Lifter packs a punch with 100 lb. magnet strength. Equipped with a 30" long T handle, it's easy to place on the cover and lift up.

FIBERGLASS POLE SUPPORT BRACKET

M-730

POLE SUPPORT BRACKET WITH WINGED HINGE

This handy tool will keep your pole supported above manhole rim. Hinged in middle so it folds up and is easy to store. Interior rubber gasket keeps pole in place.



INSERT NOZZLE GUIDE



1) Place hose
in Jaws

2) Close Jaws
around hose

3) Lower the
guide into place

4) Pull rope and release
hose and nozzle

This device connects to our interlocking pole systems. Essentially it will grab and lock the end of your hose where the nozzle is so the operator can put it where he wants. The sewer or duct might be submerged, blind, raised or dropped. Once you have the nozzle securely attached in the jaws you can lower the hose and nozzle into the manhole to the depth you need. At this point you just direct the end of the guide into the sewer line and insert it. At this point you can open the water flow so that your nozzle will take off in the line once you open the guide jaws. With a slight "tug" on the rope you will open the jaws and release the hose and nozzle. YOU'RE DONE. PULL UP GUIDE TO THE STREET.

ING-SS

ING-SS-24K

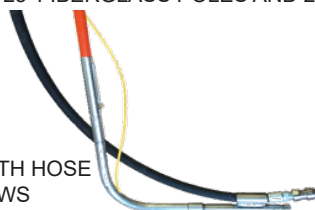
INSERT GUIDE ONLY. INCLUDES 25' NYLON ROPE. CONNECTS TO OUR QUICK CONNECT POLE SYSTEM.

INSERT NOZZLE GUIDE KIT INCLUDES 25' FIBERGLASS POLES AND 25' NYLON ROPE

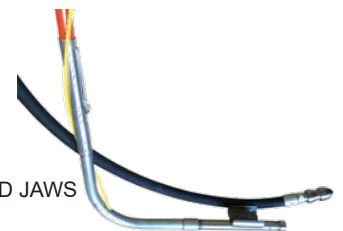
ING-SS ALONE



ING-SS SHOWN WITH HOSE AND NOZZLE IN JAWS



PULL THE ROPE AND JAWS RELEASE



New Product

MAGNETIC BOOM MANHOLE LIFTER

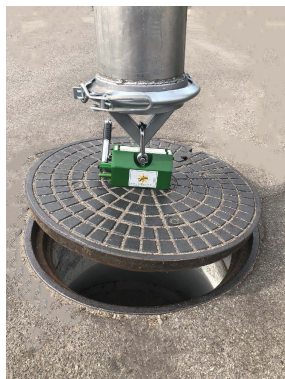
Easily attaches to the end of your boom hose. Either flat flange, male or female **BAND-LOCK** type. Weights 25lbs with 600lbs. capacity.

- Attach to Boom
- Lower onto Manhole lid
- Lift off and Detach.

MBL-61 LIFTER WITH 6" FLAT FLANGE 'VACTOR - VAC-CON'
MBL-81 LIFTER WITH 8" FLAT FLANGE 'VACTOR - VAC-CON'

MBL-82 LIFTER WITH 8" FEMALE FLANGE 'CAMEL - VAC-ALL'
MBL-62 LIFTER WITH 6" FEMALE FLANGE 'CAMEL - VAC-ALL'

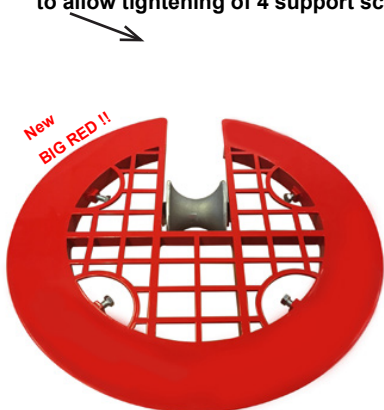
MBL-63 LIFTER WITH 6" MALE FLANGE 'CAMEL - VAC-ALL'
MBL-83 LIFTER WITH 8" MALE FLANGE 'CAMEL - VAC-ALL'



ALUMINUM ROLLER GRILL MANHOLE SAFETY COVER FOR VIDEO INSPECTION AND SEWER HOSE CLEANING

SMR-28A

This lightweight all aluminum manhole safety roller grill reduces the possibility to zero of falling into the manhole. Made of aluminum with an aluminum roller and powder coated red it is easy to see. Unique design has hand opening to allow tightening of 4 support screws. Just 15 lbs.



For 20" - 26"
Openings



SMR-28N

SAME ALUMINUM ROLLER GRILL MANHOLE SAFETY COVER BUT WITH HIGH DENSITY NYLON ROLLER FOR EVEN LIGHTER WEIGHT. JUST 11 LBS.

Southland Tool Mfg. Inc.
1430 N. Hundley St.
Anaheim, CA 92806

Tel: 714.632.8198 • Fax: 714.632.8228
www.southlandtool.com • sales@southlandtool.com