

Lincoln PRODUCTS

APPLIANCE REPAIR

SECTION 6



Refrigerator Filters

Lincoln Products filters provide a healthy alternative to tap water along with an eco-friendly alternative to bottled water.



FRIGIDAIRE



JENN-AIR

KitchenAid



Top refrigerator brands with the most popular models. Each manufacturer is color coded for easy reference. All filters are made in the USA.

Reasons to ditch the bottle and love the fridge again:

44% - the percentage of "purified" bottled water sold in U.S. that started out as municipal water.

38.6% - the percentage of plastic bottles recycled in the U.S.... Or simply put, over 60% of water bottles are trashed.

Potential - 48% of U.S. households own a fridge with water filters. Repeat purchase opportunities.



For GE

STOCK#	PACK	CASE	DESCRIPTION	MFG#	UPC#
109101	4		LPG-1 FITS GE	MWF	054374132331
109103	4		LPG-4 FITS GE	RPWF	054374330966
109105	4		LPG-3 FITS GE	MSWF	054374096671
109107	4		LPG-2 FITS GE	GSWF	054374966714

For Whirlpool

STOCK#	PACK	CASE	DESCRIPTION	MFG#	UPC#
109115	4		LPW-2 FITS WHIRLPOOL	4396510	054374667147
109117	4		LPW-3 FITS WHIRLPOOL	4396701	054374671472
109119	4		LPW-4 FITS WHIRLPOOL / KITCHENAID	8171413	054374714728

For LG

STOCK#	PACK	CASE	DESCRIPTION	MFG#	UPC#
109131	4		LPL-3 FITS LG	LT700P	054374747214
109133	4		LPL-1 FITS LG	LT500P	054374533909
109135	4		LPL-2 FITS LG	LT600P	054374474721

For Maytag

STOCK#	PACK	CASE	DESCRIPTION	MFG#	UPC#
109151	4		LPM-1 FITS MAYTAG / JENN-AIR	UKF7003	054374472147
109153	4		LPM-2 FITS MAYTAG	UKF8001	054374721474

For Samsung

STOCK#	PACK	CASE	DESCRIPTION	MFG#	UPC#
109161	4		LPS-2 FITS SAMSUNG	HAF-CIN	054374214747
109163	4		LPS-1 FITS SAMSUNG	DA29000036	054374147526

For Frigidaire

STOCK#	PACK	CASE	DESCRIPTION	MFG#	UPC#
109181	4		LPF-2 FITS FRIGIDAIRE	WF1CB	054374475261

For Amana

STOCK#	PACK	CASE	DESCRIPTION	MFG#	UPC#
109183	4		LPA-1 FITS AMANA	WF401	054374752614

In-Line Filter

For icemakers and water faucets. Fits 1/4" O.D. Tubing.

STOCK#	PACK	CASE	DESCRIPTION	UPC#
100354	6		ICEMAKER FILTER	054374157655



Water Filters and Waste Disposers

Systems IV®



STOCK#	PACK	CASE	DESCRIPTION	MFG#	UPC#
200016▲	1	12	SMALL ICEMAKER FILTER 1/4" COMPRESSION	T6	031453110060

Double the capacity of the T6 and includes a lime scale inhibitor

STOCK#	PACK	CASE	DESCRIPTION	MFG#	UPC#
200018▲	1	12	LARGE ICEMAKER FILTER 1/4" COMPRESSION	T10P	031453210104

Installs between cold supply valve and faucet. It has 1/2" MIP fittings and is supplied with a 1/2" FIP x 1/2" FIP vinyl supply tube

STOCK#	PACK	CASE	DESCRIPTION	MFG#	UPC#
200017▲	1	6	IN-LINE WATER FILTER KIT WITH FLEXIBLE SUPPLY	F7HIK	031453124876

The BG-3000R replacement system allows you look out for the environment while drinking clean water. Fewer resources are used in production of the filter and the packaging, and the Body Glove system offers a recycling program for used filters. Body Glove Replacement Cartridge.

STOCK#	PACK	CASE	DESCRIPTION	MFG#	UPC#
200400	1	6	BG-3000R WATER FILTRATION CARTRIDGE	WI-BG3000R	016145196140

InSinkErator® Waste Disposers

Badger Series



Dura-Drive® induction motor. Galvanized steel construction. 1-year We Come to You® In-Home Service Warranty. Made in the USA. Quick Lock® Sink Mount allows for easy installation and disposer replacement.

STOCK#	PACK	CASE	DESCRIPTION	MFG#	UPC#
050060	1	102	1/3 HORSEPOWER	BADGER1	050375000419
050070	1		1/3 HORSEPOWER WITH CORD	IBADGER1WC	050375001744
050065	1	90	1/2 HORSEPOWER	BADGER5	050375000426
050071	1		1/2 HORSEPOWER WITH CORD	IBADGER5WC	050375001737
050068	1	90	3/4 HORSEPOWER	BADGER5XP	050375007838

Evolution Series



SoundSeal® Technology delivers quiet performance versus a standard disposer. MultiGrind® Technology delivers two stages of grind and allows you to more efficiently grind difficult food items like bones. 3/4 Horsepower Dura-Drive® Induction Motor is engineered to specifications used for appliance motors, provides quiet operation and long life. 34.6 oz. Grind Chamber and Stainless Steel Grind Components for durability. Made in the USA. 4-Year We Come To You® In-Home Full Service Limited Warranty Covers parts and labor. Quick Lock® Sink Mount allows for easy installation and disposer replacement. Power cord not included (sold separately).

STOCK#	PACK	CASE	DESCRIPTION	MFG#	UPC#
050244	1	45	3/4 HORSEPOWER	COMPACT	050375006794

Evolution Essential



SoundSeal® Technology delivers quieter performance allowing you to hold a conversation with elevated voices in the same room. MultiGrind® Technology delivers two stages of grind and allows you to more efficiently grind difficult food items like bones. 3/4 Horsepower Dura-Drive® Induction Motor is engineered to specifications used for appliance motors, provides quiet operation and long life. 40 oz. Stainless Steel Grind Chamber and Components for durability. Made in the USA. 6-Year We Come To You® In-Home Full Service Limited Warranty Covers parts and labor. Quick Lock® Sink Mount allows for easy installation and disposer replacement, Power cord not included (sold separately).

STOCK#	PACK	CASE	DESCRIPTION	MFG#	UPC#
050255	1	42	3/4 HORSEPOWER	ESSENTIAL	050375006800



▲ For Proposition 65 warnings please refer to pages 48-59 at the end of this section.

All Products Used for Potable Water are:



Waste Disposers, Accessories and Parts



Insinkerator® Evolution Pro 750

Perfect for small households or restricted cabinet space. SoundSeal® technology delivers quiet performance versus a standard disposer. MultiGrind® technology delivers 2 stages of grind vs. 1 stage in standard disposer. Includes sound-reducing Quiet Collar® Sink Baffle containing antimicrobial material.

STOCK#	PACK	CASE	DESCRIPTION	MFG#	UPC#
050074	1		3/4 HORSEPOWER WITH CORD	IPRO750WCORD	050375018261



Excel 1

SoundSeal® Technology delivers Ultra-Quiet performance allowing you to hold a conversation with normal voices in the same room, MultiGrind® Technology delivers three stages of grind; you can stop worrying about what food you can/cannot put in your disposer, 1 Horsepower Dura-Drive® Induction Motor is engineered to specifications used for appliance motors, provides quiet operation and long life, Jam-Sensor® Circuit automatically increases torque to break through tough jams, Auto-Reverse grind system technology automatically reverses grind direction, 40 oz. Stainless Steel Grind Chamber and Components for durability, Made in the USA, InSinkErator 7-Year We Come To You® In-Home Full Service Limited Warranty Covers parts and labor, Quick Lock® Sink Mount allows for easy installation and disposer replacement, Power cord not included (Sold Separately)

STOCK#	PACK	CASE	DESCRIPTION	MFG#	UPC#
050277	1	33	1 HORSEPOWER	EXCEL	050375006817

SECTION 6 • PAGE 3

Accessories & Parts



Insinkerator® Bio-Charge Refill

This citrus-scented InSinkErator® Bio-Charge® Cartridge Replacement for Evolution Septic Assist® disposers is a cost-effective enzyme treatment. Bio-Charge contains a natural microorganism that helps break down food waste and a citrus scent to help control odors from the sink and drain. Bio-Charge® is only for use with the Evolution Septic Assist disposer, and will last 3 to 4 months with average use. One cartridge of Bio-Charge® equals 4 bottles of other septic treatments.

STOCK#	PACK	CASE	DESCRIPTION	MFG#	UPC#
050355	12	864	CARTRIDGE FOR SEPTIC DISPOSER	BIOCG	050375001706



Air Actuated Sink Top Switches

STOCK#	PACK	CASE	DESCRIPTION	MFG#	UPC#
251120	1	4	DUAL OUTLET W/CHROME & WHITE BUTTONS	STS-00	050375000358
251122	1	10	SINGLE OUTLET W/CHROME, WHITE & SATIN NICKEL BUTTONS	STS-S0	050375007807



Sink Top Switch Buttons

Compatible with ISE Single or Dual outlet switches

STOCK#	PACK	CASE	DESCRIPTION	MFG#	UPC#
251109	1	4	OIL RUBBED BRONZE BUTTON ONLY	STC-MB	050375009139
251110	1		SATIN NICKEL BUTTON ONLY	STC-SN	050375004479



Jamb Buster Wrench

A quick, effective tool to help free simple jumps. Works only on InSinkErator® manufactured disposers.

STOCK#	PACK	CASE	DESCRIPTION	MFG#	UPC#
251138	1	6	STAINLESS STEEL WRENCH	IVRN00	050375000242



▲ For Proposition 65 warnings please refer to pages 48-59 at the end of this section.

All Products Used for Potable Water are:



InSinkErator® Replacement Parts

Replacement Parts



STOCK#	PACK	CASE	DESCRIPTION	MFG#	UPC#
251100	1	6	STAINLESS STEEL STOPPER-CARDED	STP-SS	050375000198
251101	1	6	STAINLESS STEEL DUAL POSITION STOPPER-CARDED	STP-DS	050375002420
251104	1	6	DISPOSER CORD ACCESSORY KIT-CARDED	CRD-00	050375000365
251105	1	6	STANDARD MOUNTING GASKET-CARDED	SMG-00	050375000563
251106	1	6	DELUXE MOUNTING GASKET-CARDED	DMG-00	050375000570
251107	1	6	DELUXE MOUNTING GASKET KIT-CARDED	MGK-00	
251108	1	6	EVOLUTION COLLAR SINK BAFFLE -CARDED	OCB-AM	050375008217
251112	1	4	STAINLESS STEEL QUICK-LOCK FLANGE MOUNT-CARDED	OLM-00	050375002437
251115	1	6	FLEXIBLE DISCHARGE TUBE-CARDED	FDT-00	050375000372

Disposer Pigtail Kits

Complete kit with 1/2" Romex connector, wire nuts.

STOCK#	PACK	CASE	DESCRIPTION	UPC#
109790	6	36	3 FEET	054374106585
109793	6	36	6 FEET	054374106592

Display Materials

STOCK#	PACK	CASE	DESCRIPTION	MFG#	UPC#
055285	1	1	ISE DISPLAY POD	SA1127	

Instant Hot Dispenser Systems



InSinkErator® HOT100™

The InSinkErator® HOT100™ Instant Hot Water Dispenser System is the newest and most affordable addition to the Invite™ series. This model features an easy push-button technology which includes a unique HOT100 2/3 gallon stainless steel tank that delivers up to 60 cups per hour of 200° F near-boiling water. It has a modern chrome design that complements today's popular kitchen faucet styles. Model offers tool-free tank connections and dry-start protection for installation convenience.

STOCK#	PACK	CASE	DESCRIPTION	MFG#	UPC#
056301	6	84	FAUCET AND TANK CHROME	HOT100CSS	050375000495
056303	1		FAUCET AND TANK SATIN NICKEL	HOT100SNSS	050375019411



InSinkErator® Invite Contour™

The new InSinkErator® Invite Contour™ Instant Hot Water Dispenser faucet in Chrome with twist activation handle includes a 2/3 gallon stainless steel tank that delivers up to 60 cups per hour of near-boiling water. It has a stylish, sleek chrome and black design that offers tool-free tank connections and dry-start protection for installation convenience. Instant hot water dispensers sit right on the edge of your kitchen sink, the perfect complement to your faucet.

STOCK#	PACK	CASE	DESCRIPTION	MFG#	UPC#
056302	1	65	FAUCET AND TANK SATIN NICKEL	H-CONTOUR-SS	050375017899

Thermocouples

CSA certified to 1450 degrees Fahrenheit. Open circuit output up to 30 millivolts. Universal fit. Comes with adapters for all standard configurations. Compatible with all valves. Primarily used in water heaters, forced air heating systems, floor and wall furnaces.



STOCK#	PACK	CASE	DESCRIPTION	UPC#
102621▲	6	72	18"	054374006106
102622▲	6	72	24"	054374006113
102623▲	6	72	30"	054374006120
102624▲	6	72	36"	054374006137
102625▲	6	72	48"	054374006144

PG-9 Pilot Generator

Bunsen type pilot for quiet operation. Replaces ITT General Controls GP1, PG6, or G251 generators. Snorkel feature for service-free blue flame combustion. Generator cartridge is removable for replacement.



STOCK#	PACK	CASE	DESCRIPTION	UPC#
102632▲	6	48	PG-9 PILOT GENERATOR	054374006182

PG-36 Universal Power Generator

Replaces general controls (PG-9 cartridge), Honeywell, Robertshaw and White-Rodgers. Includes adapter sleeve for PG-9 pilots.



STOCK#	PACK	CASE	DESCRIPTION	UPC#
102634▲	6	72	PG-36/PG-9 GENERATOR CARTRIDGE	054374006199

Robertshaw® Low Capacity Gas Valve

Gas Valve 710 Series. Natural gas 70,000 Btu/L.P. gas 112,000 Btu, Low capacity designed for RVs and limited space heaters. Multi-tapped for universal fit. 1/2" X 1/2" low profile combo. Suitable for wall and space heater applications. Factory model 7000MVRLC. Valve Type: Millivolt. Gas Type: Natural. Inlet Conn.: 1/2"; Outlet Conn.: 1/2". Replaces General Controls #: B67



STOCK#	PACK	CASE	DESCRIPTION	UPC#
193166	1	1	MILLI-VOLT GAS VALVE	710-502 662013634278

Thermostats

Heating Thermostat

Replacement for 12 or 24 volt or millivolt heating thermostats. Replaces horizontal, round or vertical models. Easy to install, on/off switch. Suitable for all fuels. Economical.



STOCK#	PACK	CASE	DESCRIPTION	MFG#	UPC#
102650▲	12		HEAT ONLY THERMOSTAT 24V/MV		054374006205

White Rogers®

Sensi™ 4H/2C Universal Thermostat Wifi

Compatible with Wink app and Amazon Alexa. Connects thermostat to your home Wi-Fi network and control from anywhere via the free Android and iOS compatible app. Displays indoor humidity, outdoor temperature, and local weather. Optional 7 day scheduling helps reduce wasteful heating and cooling when no one is home. Quick and easy, installed just like a standard thermostat. Requires no C-wire for most HVAC applications.



STOCK#	PACK	CASE	DESCRIPTION	UPC#
194008	1	6	WiFi HEAT AND COOL	1F86U42WF 786710549335

LUX® Controls Heat or Cool Thermostat

A mechanical, standard heat/cool thermostat is a great budget conscious model for the home. Display provides both room temperature and set temperature. Includes decorative wall plate and is mercury free. For most 24V heat and A/C systems, 1 stage heat/1 stage cool: gas, oil or electric systems, 2-wire heat only hydronic systems (hot water baseboard & radiator), Single stage heat pumps



STOCK#	PACK	CASE	DESCRIPTION	MFG#	UPC#
194012	1	8	STANDARD HEAT AND COOL THERMOSTAT	T1011435A	021079000142

Digital Heat or Cool Thermostat

For most 24V heating and A/C systems, 1-heat/1-cool: gas, oil, electric or single stage heat pump systems. 2-wire heat only hydronic systems (hot water baseboard & radiator). Millivolt systems (wall heaters/furnaces & gas fireplaces).



STOCK#	PACK	CASE	DESCRIPTION	MFG#	UPC#
194015	1	10	DIGITAL HEAT AND COOL THERMOSTAT	DMH110	021079051106

Pre Programmed Thermostat

Easy installation, Easy to use, Easy to read display. 4 pre-programmed periods per day. Keyboard lock. Temporary override and manual hold. 3 year warranty. Selectable Fahrenheit/celsius setting. Adjustable temperature swing (differential) Speed Dial® For easy programming. Air filter monitor. Optional wall plate. Battery powered (ZAA) alkaline batteries required, mercury free. For most 24V heating and A/C systems. 1-heat/1-cool: gas, oil, electric or single stage heat pump systems. 2-wire heat only hydronic systems (hot water baseboard & radiator). Gas millivolt heaters.



STOCK#	PACK	CASE	DESCRIPTION	MFG#	UPC#
194020	1	10	HEAT AND COOL THERMOSTAT	TX500E-010	021079065004

5 Day Programmable Thermostat

Easy installation, Easy to use, Easy to read large back-lit display, User option: 2 or 4 periods per day, Keyboard lock, Temporary override and manual hold, 3 year warranty, Selectable Fahrenheit/celsius setting, Adjustable temperature swing (differential), Speed Slide® for easy programming, Air filter monitor, Adjustable 2nd stage heat offset, Optional wall plate, Selectable smart recovery, Dual powered (ZAA) Alkaline batteries, Mercury free, Universal compatibility for conventional heat & A/C. Universal compatibility for heat pumps with up to 2-stage heat/1 stage cool, 3-wire heat only hydronic systems (hot water) zone valves, Gas millivolt heaters.



STOCK#	PACK	CASE	DESCRIPTION	MFG#	UPC#
194025	1	10	PROGRAMMABLE	TX1500U	021079111503

7 Day Programmable Thermostat

The TX100E is a 7-day or 5-2 day programmable or non-programmable thermostat for 1 heat and 1 cool systems. For use with most single stage 24-Volt heating and cooling air conditioning systems. 1 heat/1 cool gas, oil, electric or single stage heat pumps; also millivolt systems (wall heaters/furnaces and gas fireplaces).



STOCK#	PACK	CASE	DESCRIPTION	MFG#	UPC#
194021	1	4	PROGRAMMABLE	TX100E	021079141005

LUX/GEO®

A fully featured thermostat with the unique function option to customize 7-day and 5-2 day programming settings. With its simple installation and large lighted display, this is a great choice for any home. Attractive, mercury free design. GEO Thermostat Universal compatibility for conventional heat & A/C up to 2-stage heat/2-stage cool. Universal compatibility for heat pumps with up to 2-stage heat/ 1-stage cool (including aux/emergency heat). 2-wire heat only hydronic systems (hot water, baseboard and radiator). Gas millivolt heaters. Works with Amazon Alexa. WIFI enabled.



STOCK#	PACK	CASE	DESCRIPTION	MFG#	UPC#
194016	1	3	PROGRAMMABLE - WHITE	GEO-WH-003	021079150014
194017	1	3	PROGRAMMABLE - BLACK	GEO-BL-003	021079150021

Orbit® Clear Comfort Thermostats

Orbit's Clear Comfort™ thermostats deliver consistent performance combined with an elegant and modern design. Accessible and easy-to-use controls allow for quick, straight-forward adjustments. This thermostat is compatible with 1-stage gas furnaces with or gas fan, 1-stage oil systems, 1-stage heat pumps, and cooling systems. 1-stage.



STOCK#	PACK	CASE	DESCRIPTION	MFG#	UPC#
194000	1	5	NON-PROGRAMMABLE	83501	046878835016

▲ For Proposition 65 warnings please refer to pages 48-59 at the end of this section.

SECTION 6 • PAGE 6



Orbit® Clear Comfort Pro Thermostat

Orbit's Clear Comfort Pro Thermostat combines all the features of a fully programmable energy-saving thermostat with a contemporary design that looks great in any home. Full 7-Day programmability eliminates the need for manual adjustments and allows for customization of heating and cooling with up to four periods per day.

STOCK#	PACK	CASE	DESCRIPTION	MFG#	UPC#
194005	1	5	PROGRAMMABLE	83521	046878835214



Honeywell® Controls Heat Only Thermostats

The Honeywell YCT30A1003 heat only thermostat is non-programmable and has low voltage controls with a snap-action switch for heating systems. This unit does not require leveling and is not compatible with electric baseboard heat, heat pump systems, or multi stage heating/cooling systems. This model is designed for easy installation in 15 minutes or less and provides a simple user-friendly display with a dual scale (F + C).

STOCK#	PACK	CASE	DESCRIPTION	MFG#	UPC#
194040	1	6	ECONOMY HEAT ONLY 24 VOLT	YCT30A1003	085267262392



This Non-programmable thermostat has low voltage controls with a snap-action switch for millivolt systems such as fireplaces and floor or wall furnace systems. Easy to install, this unit is extremely versatile and can be placed in any number of positions. It is mercury free and designed specifically with the consumer in mind. This model is easily read and even easier to adjust.

STOCK#	PACK	CASE	DESCRIPTION	MFG#	UPC#
194043	1	6	ECONOMY HEAT ONLY MILLIVOLT	YCT33A1000	085267262393



The Round Heat Only Manual Thermostat is an easily accessible and reliable option to adjusting your surrounding's temperature. This model has been designed to be especially user friendly and features a simple and precise round that's been celebrated for its ease of use and precision. Mercury free and featuring a decorative covering ring to cover surrounding wall marks, the Round Heat Only Manual Thermostat is a modern classic that has earned its distinction as a top end thermostat.

STOCK#	PACK	CASE	DESCRIPTION	MFG#	UPC#
194087	1	6	ROUND HEAT ONLY 24 VOLT	YCT87K1003	085267263672



Heat/Cool Thermostats

The Round Heat/Cool Only Manual Thermostat is an easily accessible and reliable option to adjusting your surrounding's temperature. This model has been designed to be especially user friendly and features a simple and precise round that's been celebrated for its ease of use and precision. Mercury free and featuring a decorative covering ring to cover surrounding wall marks, the Round Heat/Cool Only Manual Thermostat is a modern classic that has earned its distinction as a top end thermostat.

STOCK#	PACK	CASE	DESCRIPTION	MFG#	UPC#
194088	1	6	ROUND HEAT/COOL 24 VOLT	YCT87N1006	085267263696

Tankless Water Heater



Chronomite Instant-Flow®

Low-Flow electric tankless water heaters are designed to provide Reliable Instant hot water when installed at the Point of Use. Applications include commercial, industrial, residential, kitchen sink, bar sink, public lavatories, service sink, scrub sink, and shower.

STOCK#	PACK	CASE	DESCRIPTION	MFG#	UPC#
019910	1		0.5 GPM 120 VOLTS	CSR15L120HTR	883232502371

Copper Water Heater Flex Connectors - FIP x FIP

Corrugated copper tubing water lines for water heaters bend up to 180 degree angle. 3/4" FIP nut on each end.



STOCK#	PACK	CASE	DESCRIPTION	UPC#
109712	6		3/4" X 12" FIP X FIP	HANG TAG 054374013579
109715	6		3/4" X 15" FIP X FIP	HANG TAG 054374013586
109718	6		3/4" X 18" FIP X FIP	HANG TAG 054374013593
109724	6		3/4" X 24" FIP X FIP	HANG TAG 054374013609
210812▲	25		3/4" X 12" FIP X FIP	BULK 054374014439
210815▲	25		3/4" X 15" FIP X FIP	BULK 054374064250
210818▲	25		3/4" X 18" FIP X FIP	BULK 054374014446
210824▲	25		3/4" X 24" FIP X FIP	BULK 054374014453

Copper Water Heater Flex Connectors - FIP x SWEAT

Corrugated copper tubing water lines for water heaters bend up to 180 degree angle. 3/4" FIP nut x Sweat.



STOCK#	PACK	CASE	DESCRIPTION	UPC#
109719	6		3/4" X 18" FIP X SWEAT	HANG TAG 054374118335
109725	6		3/4" X 24" FIP X SWEAT	HANG TAG 054374118342
210912▲	25		3/4" X 12" FIP X SWEAT	BULK 054374028054
210915▲	25		3/4" X 15" FIP X SWEAT	BULK 054374028061
210918▲	25		3/4" X 18" FIP X SWEAT	BULK 054374028078
210924▲	25		3/4" X 24" FIP X SWEAT	BULK 054374028085

Stainless Steel Braid Reinforced Connectors - FIP x FIP

Stainless steel braid reinforced tubing water lines for water heaters. 3/4" FIP nut each end.



STOCK#	PACK	CASE	DESCRIPTION	UPC#
109720▲	25		3/4" X 12" FIP X FIP	HANG TAG 054374159642
109717	24	120	3/4" X 15" FIP X FIP	054374768486
109721▲	25		3/4" X 18" FIP X FIP	HANG TAG 054374159659
109722▲	25		3/4" X 24" FIP X FIP	HANG TAG 054374159666

Stainless Steel Braid Reinforced Connectors - FIP x MIP



STOCK#	PACK	CASE	DESCRIPTION	UPC#
109727	24	120	3/4" X 15" FIP X MIP	054374684861
109728	24	120	3/4" X 18" FIP X MIP	054374848614
109729	24	120	3/4" X 24" FIP X MIP	054374486144

Stainless Steel Braid Reinforced Connectors - FIP x COMP

Stainless steel braid reinforced water heater supply. 3/4" FIP nut X 3/4" compression nut.



STOCK#	PACK	CASE	DESCRIPTION	UPC#
109723▲	25		3/4" X 18" FIP X COMPRESSION	HANG TAG 054374806119
109726▲	25		3/4" X 24" FIP X COMPRESSION	HANG TAG 054374061198

Stainless Steel Corrugated Connectors - FIP x FIP

Stainless Steel corrugated, kink resistant tubing. Water lines for water heaters and water softeners.



STOCK#	PACK	CASE	DESCRIPTION	UPC#
109761	1	6	3/4" X 15" FIP X FIP MEGA WATERFLEX	054374311491
109762▲	6		3/4" X 18" FIP X FIP MEGA WATERFLEX	054374126118
109763▲	6		3/4" X 24" FIP X FIP MEGA WATERFLEX	054374126125
109765	1	12	1" X 3/4" x 24" FIP X FIP MEGA WATERFLEX	054374515691
109766▲	1	12	1" X 18" FIP X FIP MEGA WATERFLEX	054374569557
109767▲	1	12	1" X 24" FIP X FIP MEGA WATERFLEX	054374695577
109769	1	12	1-1/4" X 18" FIP X FIP MEGA WATERFLEX	054374557707
109768	1	12	1-1/4" X 1" x 24" FIP X FIP MEGA WATERFLEX	054374955770
109775	1	12	1-1/2" X 18" FIP X FIP MEGA WATERFLEX	054374577071



Water Heater Parts and Elements

Stainless Steel Corrugated Connectors - FIP x Sweat

Stainless steel corrugated, kink resistant tubing for water heaters and water softeners.



STOCK#	PACK	CASE	DESCRIPTION	UPC#
109758	1	6	3/4" X 3/4" X 18" FIP X SWEAT MEGA WATERFLEX	054374155156
109759	1	6	3/4" X 3/4" X 24" FIP X SWEAT MEGA WATERFLEX	054374551569

Stainless Steel Corrugated Connectors - FIP x Push Fit

Stainless steel corrugated, kink resistant tubing for water heaters and water softeners.



STOCK#	PACK	CASE	DESCRIPTION	UPC#
109705	1	6	3/4" X 3/4" X 18" FIP X PUSH FIT	054374115488

Water Flex Connector Washers

Fits 3/4" water flex connectors.



STOCK#	PACK	CASE	DESCRIPTION	UPC#
100224	6	144	WATERFLEX WASHERS-NEW STYLE	2 PER CARD 054374001811
100225	6	144	WATERFLEX WASHERS-OLD STYLE	2 PER CARD 054374055388

Di-Electric Nipples

Cadmium plated, plastic lined nipples help deter electrolysis.



STOCK#	PACK	CASE	DESCRIPTION	UPC#
109710▲	6	72	3/4" X 3" INSULATED NIPPLES	2 PER CARD 054374042654
109711	6	72	3/4" X 3" HEAT TRAP NIPPLES	2 PER CARD 054374323340

Hot Water Air Valves

For venting trapped air in hot water systems



STOCK#	PACK	CASE	DESCRIPTION	UPC#
122617▲	12	144	1/4" BLEED VENT KEY SQUARE HOLE	BAGGED 054374855469
122618▲	6	72	1/8" MIP AIR VALVE	BAGGED 054374909308
122629▲	6	72	AIR VALVE AND KEY	BAGGED 054374690930

Water Heater Elements

Screw-In Style

Fits Kelvinator, Norge, Intertherm, Montgomery Ward, Rheem and Rudd. Westinghouse changed to this type in 1963. State changed to this type in July 1975.



STOCK#	PACK	CASE	DESCRIPTION	UPC#
109770▲	6		4500 WATT - HIGH DENSITY - 240 VAC	054374013814
109772▲	6		4500 WATT - MEDIUM DENSITY - 240 VAC	054374013838

Fits Kelvinator, Norge, Intertherm, Montgomery Ward, Rheem and Rudd. Also fits some American Appliance, Craftmaster, State and Reliance and Westinghouse water heaters.



STOCK#	PACK	CASE	DESCRIPTION	UPC#
109773▲	6		1440 WATT - HIGH DENSITY - 120 VAC	054374096152
109774▲	6		3500 WATT - HIGH DENSITY - 240 VAC	054374138920

Universal Flange Style

4 bolt immersion element with 2-1/2" diagonal bolt hole centers.



STOCK#	PACK	CASE	DESCRIPTION	UPC#
109771	6		4500 WATT - MEDIUM DENSITY - 240 VAC	054374013821



Water Heater Elements and Accessories



Water Heater Element Wrench

Socket sized to fit screw-in type elements.

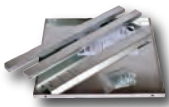
STOCK#	PACK	CASE	DESCRIPTION	UPC#
109785▲	12		ZINC PLATED	054374013883



Water Heater Thermostats

UL Listed with built-in safety switch to prevent overheating. Adjustable temperature range of 110° to 170°.

STOCK#	PACK	CASE	DESCRIPTION	UPC#
109780▲	12		UPPER, COMBINATION TYPE, DOUBLE POLE, WITH LIMIT	054374013852
109781	6	72	LOWER, SINGLE POLE, WITHOUT LIMIT	054374013869
109782	12		LOWER, COMBO TYPE, WITH LIMIT	054374013876



Oatey® Water Heater Stands

Holds up to a 50 gallon tank.

STOCK#	PACK	CASE	DESCRIPTION	MFG#	UPC#
010570	1		21" X 21" X 18" HIGH	34057	038753340579

Oatey® Water Heater Drip Pans

Manufactured from prime aluminum and are expertly worked to exact specifications under strict quality control., Recommended for gas or electric water heaters., Meets requirements of Southern Building Code. Exposed edges have been rolled to protect the installer from injury.



STOCK#	PACK	CASE	DESCRIPTION	MFG#	UPC#
010591	1	6	20" WITH 1" TO 1-1/2" PVC ADAPTER	34081	038753340814
010592	1	6	22" WITH 1" TO 1-1/2" PVC ADAPTER	34082	038753340821
010593	1	6	24" WITH 1" TO 1-1/2" PVC ADAPTER	34083	038753340838



Plastic water heater pans can be installed under electric water heaters to protect from water damage.

010596	1	12	22" WITH 1" TO 1-1/2" PVC ADAPTER	34063	038753340630
--------	---	----	-----------------------------------	-------	--------------



HoldRite® Water Heater Enclosures

Water Heater Enclosures are constructed of galvanized steel providing protection for water heaters and similar equipment installed in outdoor locations. Anchor points at the rear of the enclosure allow for optional attachment to the adjacent building structure.

STOCK#	PACK	CASE	DESCRIPTION	MFG#	UPC#
010580▲	1		24" X 24" X 74"	QSE24	671119000245
010581▲	1		26" X 26" X 74"	QSE26	671119260007
010582▲	1		30" X 30" X 74"	QSE30	671119000306

Eastman



STOCK#	PACK	CASE	DESCRIPTION	MFG#	UPC#
010595▲	1	10	22" ID X 24" OD WITH ADAPTER	60091	917126009162

Holdrite®

Quick Strap® Supports up to 80-gallon water heaters



STOCK#	PACK	CASE	DESCRIPTION	MFG#	UPC#
010608▲	1	15	GALVANIZED STEEL	QS-50	671119901504



Watts®



Water Heater Strap Kits are a double-strapping system for restraining water heaters. They can be installed on the front of the water heater or wrapped around the water heater with non-flammable back spacers to keep the heater from coming in contact with the wall, and are bolted directly to the wall studs. The kit contains four long straps to restrain the upper and lower portions of the water heater. They are easily adjustable with pre-assembled self-tapping lag bolts that are held with paper keepers.

STOCK#	PACK	CASE	DESCRIPTION	MFG#	UPC#
010620	1	10	GALVANIZED FOR WATER HEATERS UP TO 75 GAL	E-75	098268928624

Little Firefighter®



Water heater restraint, water heaters from earthquakes and other natural disasters. Secures up to 80 gallon water heaters. Complies with all codes. Strap made from a high strength, soft woven material. Fire-resistant material will not rust. Pre-assembled, with self drilling lag bolts. No sharp edges. Fast, easy installation.

STOCK#	PACK	CASE	DESCRIPTION	MFG#	UPC#
010635	1	24	FOR WATER HEATER 30 TO 80 GAL	LFR80	831888008082

Flexible Magnesium Anode Rods



Anode rods act as a sacrificial metal to help water heater corrosion and rust through. They help prolong the life of the heater.

STOCK#	PACK	CASE	DESCRIPTION	UPC#
119700▲	1	100	44" ROD WITH HEX HEAD	054374405282
119701▲	1	100	44" ROD WITH NIPPLE END	054374052820
119702▲	1	100	44" ROD WITH HEAT TRAP NIPPLE END	054374528202

Aluminum and Zinc Rods

STOCK#	PACK	CASE	DESCRIPTION	MFG#	UPC#
119703▲	1	100	44" ROD WITH HEX HEAD		054374790791
119704▲	1	100	44" ROD WITH NIPPLE END		054374630431

Thermal Expansion Tanks



PROFLO®

Diaphragm-type. Pre-pressurized expansion tank. Designed for potable hot water systems. Eliminates relief valve spills. Controls pressure build-up. Protects plumbing fixtures. Extends water heater life. Eliminates hot water waste. Factory pre-charged to 40 PSI. Low lead compliant. 3/4" SS NPTM connection.

STOCK#	PACK	CASE	DESCRIPTION	MFG#	UPC#
010629	1	75	2.0 GALLON CAPACITY 8"H X 11.6" DIAMETER	PFXT5	781889202623
010630▲	1	48	4.4 GALLON CAPACITY 11"H X 14.5" DIAMETER	PFXT12	781889202616

Gas Valve Keys



Furnace Key

Fits gas cocks with square stem.

STOCK#	PACK	CASE	DESCRIPTION	UPC#
102600▲	6	144	1/4" SOCKET X 3"	054374006014
102601	6	144	5/16" SOCKET X 3"	054374006021
102603▲	6	36	1/4" SOCKET X 9"	054374006045
102604	6	36	5/16" SOCKET X 9"	054374006052

Gas Valve Keys and Washing Machine Valves



Log Lighter Key

Replacement key fits both angle and straight log lighter valves with 5/16" square stems.

STOCK#	PACK	CASE	DESCRIPTION	UPC#
102602	6	36	5/16" SOCKET X 3"	054374006038

4-Way Valve Key

Fits a multiple number of furnaces and valves. Square holes are 1/4", 5/16", 9/32" and 11/32".

STOCK#	PACK	CASE	DESCRIPTION	MFG#	UPC#
142605▲	6	72	4-WAY	RAP50105	054374780730

10' Plumber's Tape

Galvanized steel strap for hanging pipes, fastening faucets and valves, repair jobs.

STOCK#	PACK	CASE	DESCRIPTION	UPC#
203138▲	100	28 GAUGE		BULK 054374014422
203139▲	100	22 GAUGE		BULK 054374027842

Washing Machine Valves

Washing Machine Valves

Satin finish brass valve for washing machines.



STOCK#	PACK	CASE	DESCRIPTION	MFG#	UPC#
109313▲	6	48	1/2" FIP INLET X HOSE THREAD		054374012732
290002▲	100		1/2" FIP INLET X HOSE THREADF	BULK	054374000272
290004▲	12	72	1/2" FIP - SATIN FINISH - DOMESTIC	247LF	690043461243
109314▲	6	72	5/8" COMPRESSION INLET X HOSE THREAD		054374012749
290190▲	100		5/8" COMPRESSION INLET X HOSE THREAD	BULK	054374000449
290005▲	12	72	1/2" NOMINAL COPPER - SATIN FINISH - DOMESTIC	221CCLF	690043461052
109318▲	6	48	5/8" COMPRESSION INLET X HOSE THREAD-COARSE THREAD		054374107391
				BULK	690043207193
Top handle.					
290001▲	24	144	1/2" FIP SATIN FINISH	BULK	690043002491

Dual Shut-Off Valve

This product consists of a brass body construction, and a single lever to control shutoff of both hot and cold water supplies.

STOCK#	PACK	CASE	DESCRIPTION	MFG#	UPC#
290000▲	6	30	1/2" SWEAT - ROUGH BRASS - IMPORT	KF1000	663370210013

Bypass Valves

STOCK#	PACK	CASE	DESCRIPTION	MFG#	UPC#
290010▲	12	72	1/2" REVERSE OUTLET - SATIN FINISH - DOMESTIC	248LF	690043461250
290011▲	12	72	1/2" SF BOTTOM OUTLET - SATIN FINISH - DOMESTIC	250LF	690043461274

Quarter Turn Ball Valves

Satin finish with stainless steel ball for better reliability.

STOCK#	PACK	CASE	DESCRIPTION	UPC#
109315▲	6	72	1/2" IPS X MALE HOSE THREAD	054374095803
109316▲	6	72	5/8" COMPRESSION X MALE HOSE THREAD	054374091560



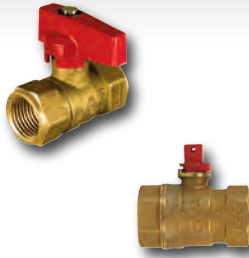
Gas Valves

15/16" flare nose valves replace old style 5/8" flare nose valves and readily adapt to today's 15/16" flare gas appliance connectors. All valves are CSA approved.

Gas Ball Valves

Straight Pattern - Pipe X Pipe

These gas valves are intended for use as appliance shut-off valves. AGA Approved.



STOCK#	PACK	CASE	DESCRIPTION	MFG#	UPC#
109500▲	6	72	1/2" FEMALE PIPE LEVER HANDLE		054374012985
109501▲	6	72	3/4" FEMALE PIPE LEVER HANDLE		054374012992
214404	100	200	1/2" FEMALE PIPE LEVER HANDLE-BULK		054374014552
214405	1	144	3/4" FEMALE PIPE LEVER HANDLE-BULK		054374014569
214406▲	1		1" FEMALE PIPE LEVER HANDLE		054374014576
214304▲	1	144	1/2" FEMALE PIPE FLAT HEAD		054374014521
214306▲	6	36	1" FEMALE PIPE FLAT HEAD	113-525	032888135253

Straight Pattern - Flare X Pipe



STOCK#	PACK	CASE	DESCRIPTION	MFG#	UPC#
109502▲	6	72	1/2" FLARE X 3/4" FEMALE PIPE-CARDED		054374100262
109504▲	6	72	3/8" FLARE X 1/2" FEMALE PIPE-CARDED		054374013005
109505▲	6	72	1/2" FLARE X 1/2" FEMALE PIPE-CARDED		054374013012
214252	10	80	1/2" FLARE X 3/4" FEMALE PIPE	01-537	054374102303
214250	10	100	3/8" FLARE X 1/2" FEMALE PIPE	PF9281FDC	054374015924
214251	100		1/2" FLARE X 1/2" FEMALE PIPE	PF9281FDD	054374015931

Straight Pattern - Flare X Pipe



STOCK#	PACK	CASE	DESCRIPTION	MFG#	UPC#
109507▲	6	48	15/16" FLARE X 1/2" FEMALE PIPE-CARDED		054374100279
109508▲	6	36	15/16" FLARE X 3/4" FEMALE PIPE-CARDED		054374013043
214256▲	144		15/16" FLARE X 1/2" FEMALE PIPE	F1361GFCL-4	054374145423
214255▲	144		15/16" FLARE X 3/4" FEMALE PIPE	F1361GFCL-3	054374014514

Angle Pattern - Flare X Pipe

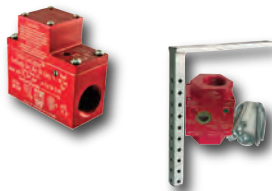


STOCK#	PACK	CASE	DESCRIPTION	MFG#	UPC#
109503▲	6	36	3/8" FLARE X 1/2" FEMALE PIPE-CARDED		054374058327
109506▲	6	48	1/2" FLARE X 1/2" FEMALE PIPE-CARDED		054374188833
109509▲	6	36	15/16" FLARE X 3/4" FEMALE PIPE-CARDED		054374013050
214249	10	120	3/8" FLARE X 1/2" FEMALE PIPE	01-380G	054374096411
214253	10	100	1/2" FLARE X 1/2" FEMALE PIPE	01-480G	054374089338
214254▲	100		15/16" FLARE X 3/4" FEMALE PIPE	01-680G	054374014507

Gas Earthquake Safety Valves

Little Firefighter® Gas Safety 3/4" Valve Kit

Automatically shuts off gas flow to the building when triggered by a 5.4 magnitude seismic event. Includes stabilizing bracket.



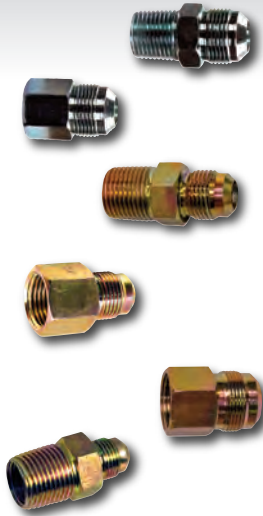
STOCK#	PACK	CASE	DESCRIPTION	MFG#	UPC#
193405	1	1	3/4" FIP WITH BRACKET	AGV-075-KIT	831888007528
193403	1	12	1" VERTICAL PATTERN WITH BRACKET	VAGV-100KIT	831888004121



Gas Fittings and Log Lighters

Gas Fittings

CSA approved fitting for use with approved gas connectors.



STOCK#	PACK	CASE	DESCRIPTION	UPC#
127530▲	12	144	15/16" FLARE X 1/2" MALE PIPE	BAGGED 054374086528
127531▲	12	144	15/16" FLARE X 3/4" MALE PIPE	BAGGED 054374086511
127532▲	12	144	15/16" FLARE X 1/2" FEMALE PIPE	BAGGED 054374086504
127533▲	12	144	15/16" FLARE X 3/4" FEMALE PIPE	BAGGED 054374086535
127521▲	6	72	3/8" FLARE X 1/2" FEMALE PIPE	BAGGED 054374809073
127540▲	12	144	1/2"FLARE X 3/8" MALE PIPE	BAGGED 054374132331
127541▲	12	144	1/2"FLARE X 1/2" MALE PIPE	BAGGED 054374416264
127542▲	12	144	1/2"FLARE X 3/4" MALE PIPE	BAGGED 054374162888
127543▲	12	144	1/2"FLARE X 3/8" MALE PIPE	BAGGED 054374755318
127544▲	12	144	1/2"FLARE X 1/2" FEMALE PIPE	BAGGED 054374628889
127598	6	72	1" FLARE X 3/4" MALE PIPE - STEEL	BAGGED 054374953493
127599	6	72	1" FLARE X 3/4" FEMALE PIPE - STEEL	BAGGED 054374534937
127526▲	6	72	3/8"M FLX1/2" MPT(TAPPED 3/8"FIP)STEEL	BAGGED 054374474271
127528▲	6	72	1/2"M FLX1/2" MPT(TAPPED 3/8"FIP)STEEL	BAGGED 054374742714

Log Lighters

Blue Flame™

Natural gas Log Lighters with Exclusive Air/Gas Mixing Chamber. 16" tube with 1/2" FIP inlet.



STOCK#	PACK	CASE	DESCRIPTION	MFG#	UPC#
214601▲	1	6	ANGLE	LLA1626.NG	054773113030
214602▲	1	6	STRAIGHT	LLS1626.NG	054773112033

Blue Flame™

Full-Turn "Blue Flame" Valve Kit - Includes 1/2" Brass Valve, Polish Chrome Floor Plate with Key.



STOCK#	PACK	CASE	DESCRIPTION	MFG#	UPC#
214610▲	6	24	STRAIGHT - CHROME	BFS.01.HD	054773902597
214651▲	6	36	STRAIGHT - POLISHED BRASS	B.FS.PB.HD	054773900357
214611▲	6	24	90° ANGLE - CHROME	BFA.PC.HD	054773900340
214661▲	6	36	90° ANGLE - POLISHED BRASS	BFA.PB.HD	054773900333

Log Lighter Valves

1/2" inlet and outlet, rough brass. Includes chrome plated flange and valve key. Use as shut-off between log lighter and gas supply.



STOCK#	PACK	CASE	DESCRIPTION	UPC#
109510▲	12		1/2" INLET-ANGLE PATTERN	054374013067
109511▲	4	32	1/2" INLET-STRAIGHT PATTERN	054374013074

PROFLO®

Quarter Turn Log Lighter Valve



STOCK#	PACK	CASE	DESCRIPTION	MFG#	UPC#
214721	1	36	1/2" INLET STRAIGHT PATTERN	PFSVL2CP	781889195420

Log Lighter Valve Flanges

Flange fits most angle and straight lighter valves.



STOCK#	PACK	CASE	DESCRIPTION	UPC#
109520	6	48	1/2" FIP X 2-1/2" CHROME	054374561582
109519▲	6	48	3/4" FIP X 1-3/4" QUARTER TURN CHROME	054374055371



Replacement Barbecue Hoses

Replacement Gas Grill Hose. Fits most propane barbecue gas grills.



STOCK#	PACK	CASE	DESCRIPTION	MFG#	UPC#
213103▲	1	6	22" LONG 3/8" MIP X 3/8" FIP	F273716	089301737167

Appliance Extension Hose for LP

Propane Appliance Extension Hose Assembly is used as an extension hose for portable propane appliances such as grills and stoves.



STOCK#	PACK	CASE	DESCRIPTION	MFG#	UPC#
213107▲	1	6	5' HOSE 1/4" MIP X 1/4" FIP	F273717	089301737174

Patio Hose for Natural Gas

Most commonly used for connecting natural gas appliances to the existing low pressure supply. With Dust Covers.



STOCK#	PACK	CASE	DESCRIPTION	MFG#	UPC#
213115▲	1	6	12' 3/8" FIP X 3/8" MALE FLARE QUICK DISCONNECT	F273720	089301737204

Propane Hose Assembly

Used to connect/extend hoses. Left hand threads. High Pressure 400 PSI.



STOCK#	PACK	CASE	DESCRIPTION	MFG#	UPC#
213120▲	1	6	5' HOSE 9/16" FPT X 9/16" FPT	F276148	089301761483

Used to connect low pressure appliances to low pressure regulators



213124▲	1	6	5' HOSE 3/8" M X 3/8" F	F276124	089301761247
213225▲	1	6	30' HOSE 3/8" M X 3/8" F	F271163-30	089301163331

Most commonly used with most distribution posts or T and Y connectors.



213220▲	1	6	5' DC-M X DC-F	F273710	089301737105
---------	---	---	----------------	---------	--------------

Connects appliances that are designed for disposable cylinders to a 20 lb. cylinder with hand tighten swivels on both ends. Includes hand wheel.



213222▲	1	6	5' HOSE POL-M-HAND WHEEL X DC-M	F273701	089301737013
213224▲	1	6	12' HOSE POL-M-HAND WHEEL X DC-M	F273702	089301737020

Pigtail Propane Hose Connector

For connecting propane cylinder to RV or trailer propane regulator. Rated for 200,000 BTUs per hour. Safety features include thermal protection in case of fire and excess flow protection in case of broken gas line. Type 1 ACME nut x 1/4 inverted male flare.



STOCK#	PACK	CASE	DESCRIPTION	MFG#	UPC#
213310	1	4	3' HOSE	59173	014717591737

High, Medium and Low Position Regulator

Low pressure regulator will operate barbecue grills and low pressure appliances.



STOCK#	PACK	CASE	DESCRIPTION	MFG#	UPC#
213136▲	1	6	3/8" FIP X POL-M	F276136	089301761360

90° Low Pressure Regulator with Appliance End Fitting and Acme Nut is most commonly used on propane gas grills.



213137▲	1	6	3/8" FIP INLET X APPLIANCE END FITTING OUTLET W/ACME NUT	F273761	089301737617
---------	---	---	--	---------	--------------



213170▲	1	6	3/8" FIP INLET X POL-M OUTLET	F273759	089301737594
---------	---	---	-------------------------------	---------	--------------

Propane Low Pressure Regulator is most commonly used on low pressure appliances that are up to 140,000 BTUs.



213138▲	1	6	1/4" FIP INLET X 3/8" FIP OUTLET	F273767	089301737679
---------	---	---	----------------------------------	---------	--------------



High Pressure Regulator

Most commonly used on torches, fish cookers, smokers, or other high pressure appliances. Adjustable 1 to 20 PSI

STOCK#	PACK	CASE	DESCRIPTION	MFG#	UPC#
213237▲	1	6	POL-M X 1/4" FIP	F273719	089301737198



Regulator Assemblies

5-ft Propane Hose and Regulator Assembly connects low pressure portable propane appliances to a 20 lb. cylinder.

STOCK#	PACK	CASE	DESCRIPTION	MFG#	UPC#
213217▲	1	6	3/8" FEM FLARE X POL-M-HAND WHEEL	F273071	089301730717

Adapters

Adapts hoses/regulators to tanks

STOCK#	PACK	CASE	DESCRIPTION	MFG#	UPC#
213145▲	1	6	1/4" MIP X POL-M-HAND WHEEL	F276139	089301761391
213129▲	1	6	9/16" M X POL-M-HAND WHEEL	F276129	089301761292

Adapts pipe thread to throw away cylinders

213141▲	1	6	1/4" MIP X 1" DC-M	F273755	089301737556
213140▲	1	6	9/16" MIP X DC-F	F276130	089301761308
213143▲	1	6	1/4" MIP X DC-F	F273754	089301737549

Adapts throw away cylinders to pipe thread

213147▲	1	6	1"-20 DC-M X 1/4" FIP	F276140	089301761407
---------	---	---	-----------------------	---------	--------------

Connects female fittings/hoses

213152▲	1	6	1/4" MIP X 9/16" M	F276152	089301761520
213153▲	1	6	3/8" MIP X 9/16" M	F276153	089301761537
213154▲	1	6	9/16" MIP X 9/16" M	F276154	089301761544

Adapts tank fitting to bottle gas cylinders

213155▲	1	6	DC-M X POL-F "STEAK SAVER"	F276171	089301761711
---------	---	---	----------------------------	---------	--------------

For refilling 1 lb. bottles - Canada only

213157▲	1	6	DC-F X POL-M	F276172	089301761728
---------	---	---	--------------	---------	--------------

PO.L. Nut and Tailpiece

123919▲	12	144	COMBO	Bagged	054374055838
---------	----	-----	-------	--------	--------------

Quick Disconnects

Provides plug in and plug out use of appliances such as gas grills, torches, heaters, cookers, etc.

STOCK#	PACK	CASE	DESCRIPTION	MFG#	UPC#
213159▲	1	6	1/4" MIP X 1/4" FIP	F276190	089301761902
213163▲	1	6	3/8" MIP X 3/8" FIP	F276187	089301761872
213161▲	1	6	1/4" MIP X POL-M	F276330	089301763302

Cylinder Adapter

Adapts bulk tank to appliances

STOCK#	PACK	CASE	DESCRIPTION	MFG#	UPC#
213160▲	1	6	DC-M X POL-M-HAND WHEEL	F273758	089301737587



Propane Accessories and Relief Valves



Propane Multiple Appliance Adapters

Allows the convenience of using your camper LP supply for lanterns, tabletop BBQs, etc. at parks, campsites, rest stops.

STOCK#	PACK	CASE	DESCRIPTION	MFG#	UPC#
213230▲	1	6	POL-F X DC-M X POL-M WITH DUST COVER AND CAP - TEE	F273751	089301737518
213235▲	1	6	POL-M-HAND WHEEL X DC-M X DC-M - WYE	F271715	089301717152
213240▲	1	6	POL-F X POL-F X POL-M WITH DUST CAPS - WYE	F271735	089301717350

Appliance End Fitting

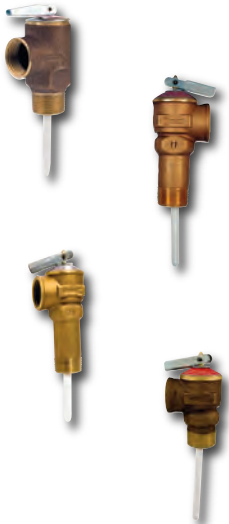
For appliances up to 80,000 BTU.

STOCK#	PACK	CASE	DESCRIPTION	MFG#	UPC#
213246▲	1	6	ACME NUT X 1/4" MIP	F276495	089301764958

Pressure Relief Valves

Temperature and Pressure Relief Valves

3/4" inlet and outlet probe extension thermostat has lever type reseating relief valve. Set at 210° and 150 PSI. Short probe is ideal for side tapped water heaters. Long probe makes it ideal for top tapped water heaters, especially when the valve is not tapped directly into the water heater.



STOCK#	PACK	CASE	DESCRIPTION	MFG#	UPC#
109512▲	12		SHORT PROBE	CARDED	054374013081
291410▲	50		SHORT PROBE	BULK	612052030067
291416▲	1	12	2-3/32" BODY 150PSI	23354-0150	697285233546
109513▲	6		LONG SHANK	CARDED	054374138821
291405▲	50		LONG SHANK	BULK	612052030906
109516▲	1	6	3/4" INLET X 3/4" OUTLET WITH 2-1/2" SHANK		054374055654
291412▲	1		2-1/2" SHANK 150 PSI	19783-0150	697285161320
109514▲	12		LONG PROBE	CARDED	054374013098
291411▲	50		LONG PROBE	BULK	612052032603
291409▲	1	72	LONG PROBE 125 PSI	15914-0125	697285159143

Pressure Relief Valves

3/4" inlet and outlet. Set at 150 PSI. Use when no temperature relief is needed.



STOCK#	PACK	CASE	DESCRIPTION	MFG#	UPC#
109515▲	6	48	3/4" INLET X 3/4" OUTLET	CARDED	054374013104
291303▲	50		3/4" INLET X 3/4" OUTLET	BULK	054374079797
291350▲	1	12	3/4" INLET X 3/4" OUTLET WILKINS	WP1000AXL150CF	612052231754

Water Hammer Arrestors

Water hammer arrestors are used to prevent suspended pipes from banging caused by faucets and valves (especially washing machine solenoid valves) closing rapidly and reverberating throughout the structure. Complies with national and state codes for residential use. UPC/ASSE certified.



STOCK#	PACK	CASE	DESCRIPTION	UPC#
109871▲	12		3/4" FEMALE HOSE THREAD X 3/4" MALE HOSE THREAD	054374134199
109877▲	6	72	1/2" MALE PIPE	054374159734



3/8" Stainless Steel Gas Connectors

3/8" connectors are used primarily for small appliances and log lighters. Each connector is supplied with one 3/8" flare x 1/2" MIP x 3/8" FIP and one 3/8" Flare x 1/2" FIP end fitting.

STOCK#	PACK	CASE	DESCRIPTION	MFG#	UPC#
109730	6		3/8" X 12"-BOXED		054374013616
109731	6		3/8" X 18"-BOXED		054374013623
109732	6		3/8" X 24"-BOXED		054374013630
109733	6		3/8" X 36"-BOXED		054374013647
109734	6		3/8" X 48"-BOXED		054374013654
109735	6		3/8" X 60"-BOXED		054374013661
109736	6		3/8" X 72"-BOXED		054374013678
116030	6		3/8" X 12"-BAGGED		054374055814
116031	6		3/8" X 18"-BAGGED		054374049783
116032	6		3/8" X 24"-BAGGED		054374049790
116033	6		3/8" X 36"-BAGGED		054374049806
116034	6		3/8" X 48"-BAGGED		054374049813
116035	6		3/8" X 60"-BAGGED		054374049820
116036	6		3/8" X 72"-BAGGED		054374049837
211012	1	25	3/8" X 12" -CSA-BULK	10-3132-12	054374049592
211018	1	25	3/8" X 18" -CSA-BULK	10-3132-18	054374049608
211024	1	25	3/8" X 24" -CSA-BULK	10-3132-24	054374049615
211036	1	25	3/8" X 36" -CSA-BULK	10-3132-36	054374049622
211048	1	25	3/8" X 48" -CSA-BULK	10-3132-48	054374049639
211060	1	12	3/8" X 60" -CSA-BULK	10-3132-60	054374049646
211072	1	12	3/8" X 72" -CSA- BULK	10-3132-72	054374049653



1/2" Stainless Steel Gas Connectors

1/2" connectors are primarily used for water heaters, clothes dryers and furnaces. Each connector is supplied with one 1/2" flare x 1/2" MIP x 3/8" FIP and one 1/2" flare x 1/2" FIP end fitting.

STOCK#	PACK	CASE	DESCRIPTION	MFG#	UPC#
109740	6		1/2" X 12"-BOXED		054374013685
109741	6		1/2" X 18"-BOXED		054374013708
109742	6		1/2" X 24"-BOXED		054374013715
109743	6		1/2" X 36"-BOXED		054374013722
109744	4		1/2" X 48"-BOXED		054374013739
109745	4		1/2" X 60"-BOXED		054374013746
109746	4		1/2" X 72"-BOXED		054374013753
116040	6		1/2" X 12"-BAGGED		054374049844
116041	6		1/2" X 18"-BAGGED		054374049851
116042	6		1/2" X 24"-BAGGED		054374049868
116043	6		1/2" X 36"-BAGGED		054374049875
116044	6		1/2" X 48"-BAGGED		054374049882
116045	6		1/2" X 60"-BAGGED		054374049899
116046	6		1/2" X 72"-BAGGED		054374049905
211112	1	25	1/2" X 12" -CSA-BULK	20-3132-12	054374049660
211118	1	25	1/2" X 18" -CSA-BULK	20-3132-18	054374049677
211124	1	25	1/2" X 24" -CSA-BULK	200-3132-24	054374049684
211136	1	25	1/2" X 36" -CSA-BULK	200-3132-36	054374049691
211148	1	25	1/2" X 48" -CSA-BULK	200-3132-48	054374049707
211160	1	12	1/2" X 60" -CSA-BULK	20-3132-60	054374049714



15/16" Stainless Steel Gas Connectors

15/16" connectors are used for stoves and high BTU output appliances. Each connector is supplied with one 15/16" flare x 1/2" MIP x 3/8" FIP and one 15/16" flare X 1/2" FIP end fitting.



STOCK#	PACK	CASE	DESCRIPTION	MFG#	UPC#
109752	4		15/16" X 24"-BOXED		054374013760
109753	4		15/16" X 36"-BOXED		054374013777
109754	4		15/16" X 48"-BOXED		054374013784
109755	4		15/16" X 60"-BOXED		054374013791
109756	4		15/16" X 72"-BOXED		054374013807
116052	6		15/16" X 24"-BAGGED		054374049912
116053	6		15/16" X 36"-BAGGED		054374049929
116054	6		15/16" X 48"-BAGGED		054374049936
116055	6		15/16" X 60"-BAGGED		054374049943
116056	6		15/16" X 72"-BAGGED		054374049950
211224	1	25	15/16" X 24" -CSA-BULK	30-3132-24	054374049738
211236	1	25	15/16" X 36" -CSA-BULK	300-3132-36	054374049745
211248	1	25	15/16" X 48" -CSA-BULK	30-3132-48	054374049752
211260	1	12	15/16" X 60" -CSA-BULK	30-3132-60	054374049769

3/8" Yellow Coated Gas Connectors

Polymer Base Coating protects Against Corrosive Chemicals. 3/8" connectors are used primarily for small appliances and log lighters. Each connector is supplied with one 3/8" flare x 1/2" MIP x 3/8" FIP and one 3/8" Flare x 1/2" FIP end fitting.



STOCK#	PACK	CASE	DESCRIPTION	MFG#	UPC#
116130	12	36	3/8" X 12"	B103-3132-12	054374889242
116131	12	36	3/8" X 18"	B103-3132-18	054374892426
116132	12	36	3/8" X 24"	B103-3132-24	054374924264
116133	10	30	3/8" X 36"	B103-3132-36	054374242641
116134	10	30	3/8" X 48"	B103-3132-48	054374426416
116135	6	24	3/8" X 60"	B103-3132-60	054374264162
116136	6	24	3/8" X 72"	B103-3132-72	054374641628

Polymer Base Coating protects against corrosive chemicals. Each connector is supplied with two 3/8" MIP x 1/2" MIP end fitting.

STOCK#	PACK	CASE	DESCRIPTION	MFG#	UPC#
116103	1		3/8" X 36"	B103-2131-36	054374206049

1/2" Yellow Coated Gas Connectors

Polymer Base Coating protects Against Corrosive Chemicals. 1/2" connectors are primarily used for water heaters, clothes dryers and furnaces. Each connector is supplied with one 1/2" flare x 1/2" MIP x 3/8" FIP and one 1/2" flare x 1/2" FIP end fitting.



STOCK#	PACK	CASE	DESCRIPTION	MFG#	UPC#
116140	12	36	1/2" X 12"	B203-3132-12	054374461288
116141	12	36	1/2" X 18"	B203-3132-18	054374162901
116142	12	36	1/2" X 24"	B203-3132-24	054374629015
116143	10	30	1/2" X 36"	B203-3132-36	054374290154
116144	10	30	1/2" X 48"	B203-3132-48	054374901548
116145	6	24	1/2" X 60"	B203-3132-60	054374015559
116146	6	24	1/2" X 72"	B203-3132-72	054374155590

Appliance Connectors and Washing Machine Hoses

1/2" Yellow Coated Gas Connectors W/Excess Flow Valve

For use with indoor and outdoor connections of gas appliances to gas piping system. May be used with natural, manufactured, mixed and liquefied petroleum (LP or propane) gases and LP gas-air mixtures. 1/2" connectors are used for small water heaters, clothes dryers and furnaces. Each connector is supplied with one 1/2" flare X 1/2" MIP and one 1/2" flare X 1/2" FIP end fitting.



STOCK#	PACK	CASE	DESCRIPTION	MFG#	UPC#
211418▲	1	5	1/2" X 18"	CSSD44E-P-18	026613117348
211424▲	1	5	1/2" X 24"	CSSD44E-P-24	026613117355
211436▲	1	5	1/2" X 36"	CSSD44-P-36	026613117362
211448▲	1	5	1/2" X 48"	CSSD44E-P-48	026613117379
211460▲	1	5	1/2" X 60"	CSSD44E-P-60	026613129006
211472▲	1	5	1/2" X 72"	CSSD44-72-P	026613128894

7/8" OD Yellow Coated Gas Connectors

7/8" connectors are used primarily for stoves and high BTU output appliances. Each connector is supplied with one 15/16" flare X 3/4" FIP X 3/4" MIP end fitting.



STOCK#	PACK	CASE	DESCRIPTION	MFG#	UPC#
211940▲	1	10	7/8" OD X 3/4" ID X 24"	CSSB21-24	026613118413
211942▲	1	10	7/8" OD X 3/4" ID X 36"	CSSB21-36	026613118444
211943▲	1	5	7/8" OD X 3/4" ID X 48"	CSSB21-48	026613118451

15/16" Yellow Coated Gas Connectors

Polymer Base Coating protects Against Corrosive Chemicals. 15/16" connectors are used for stoves and high BTU output appliances. Each connector is supplied with one 15/16" flare X 1/2" MIP x 3/8" FIP straight fitting and one 15/16" flare X 1/2" FIP end fitting.



STOCK#	PACK	CASE	DESCRIPTION	MFG#	UPC#
116152	6	24	15/16" X 24"	B303-3142-24	054374555901
116153	6	24	15/16" X 36"	B303-3142-36	054374559015
116154	4	16	15/16" X 48"	B303-3142-48	054374590155
116155	4	16	15/16" X 60"	B303-3142-60	054374901555
116156	4	16	15/16" X 72"	B303-3142-72	054374015665

Washing Machine Hoses

Braided Stainless Steel Hoses

High pressure washing machine hoses meet or exceed the specifications of original equipment manufacturer. 3/4" Female hose thread.



STOCK#	PACK	CASE	DESCRIPTION	UPC#
109814	5	50	4 FEET WITH STRAIGHT ENDS	054374058372
109815	5	50	5 FEET WITH STRAIGHT ENDS	054374058389
119815	1	6	5 FEET WITH STRAIGHT ENDS-2 PER BAG	054374519927
109816	5	50	6 FEET WITH STRAIGHT ENDS	054374058396
109817	12		4 FEET WITH ELBOW END	054374126286
109818	12		5 FEET WITH ELBOW END	054374262861
109819	12		6 FEET WITH ELBOW END	054374628612





Washing Machine Hose Kit

Includes: 2-4 Feet stainless steel washing machine hose, with 3/4" FHT 90° Elbow and 2 hose washers w/screen.

STOCK#	PACK	CASE	DESCRIPTION	UPC#
119840▲	1	6	4 FEET HOSES WITH 3/4" FHT 90° ELBOW	2 PER BAG 054374540556

Rubber Hoses

High quality reinforced rubber for hot or cold water. Meets or exceeds the specifications of original equipment manufacturer. 3/4" Female hose thread.



STOCK#	PACK	CASE	DESCRIPTION	UPC#
109833	24		3 FEET WITH STRAIGHT ENDS	054374013920
109834	24		4 FEET WITH STRAIGHT ENDS	054374013937
109835	24		5 FEET WITH STRAIGHT ENDS	054374013944
109836	24		6 FEET WITH STRAIGHT ENDS	054374013951
109837	12		8 FEET WITH STRAIGHT ENDS	054374861446
109844	24		4 FEET WITH ELBOW END	054374013975
109845	24		5 FEET WITH ELBOW END	054374013982
109846	24		6 FEET WITH ELBOW END	054374013999
250004	1		4 FEET WITH STRAIGHT ENDS - 1 RED / 1 BLUE	BAGGED 054374640218
250006	1		6 FEET WITH STRAIGHT ENDS - 1 RED / 1 BLUE	BAGGED 054374064021
250007	1	20	6 FEET RED/BLUE HOSE WITH ELBOW END	054374018437
250015	1		5 FEET WITH ELBOW ENDS - 1 RED / 1 BLUE	BAGGED 054374106301
149853	12		5/8" X 30" SERVICE SINK HOSE - MFG# PFSshe	BAGGED 781889192733

High Pressure Tub Mixer Hose

High quality 3/4" rubber hose with female connections. Mixes hot and cold water. Perfect for outdoor and basement showers, laundry and washing cars. Includes 2 washers.

STOCK#	PACK	CASE	DESCRIPTION	UPC#
109851	24		"Y" MIXER HOSE	054374014019

Discharge Hoses

Pre-formed hook-end to hang over laundry tub edge. Formed outlet end fits 3/4", 7/8" and 1" stub outs on automatic washing machines. Durable rubber hose construction.

STOCK#	PACK	CASE	DESCRIPTION	MFG#	UPC#
116080	12		5 FEET UNIVERSAL FIT	WRAPPED	054374042159
250011	1	12	5 FEET UNIVERSAL DRAIN HOSE	BULK	054374078912
116082	6		5 FEET UNIVERSAL FIT	WRAPPED	054374055401

The corrugated Hose is a durable, super flexible hose with saddle hook end for sure aim. The formed outlet end fits 1", 1-1/8" and 1-1/4" stub outs on automatic washing machines.

Washing Machine Accessories



Lint Trap

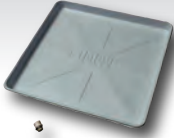
Fits washing machine drain hose. Prevents lint from clogging plumbing drain.

STOCK#	PACK	CASE	DESCRIPTION	MFG#	UPC#
109852▲	6	72	ALUMINUM MESH-2 PER CARD		054374110827
297004	6	144	ALUMINUM MESH-2 PER CARD	01000	070792010006

Washing Machine Accessories and Outlet Boxes

Washing Machine Drip Pan

The Oatey® Washing Machine Pan fits under your washing machine to protect your floor from condensation. The pan is made of durable, high-impact plastic. Pans have formed hole to punch out for the furnished, 1" PVC plastic fitting.



STOCK#	PACK	CASE	DESCRIPTION	MFG#	UPC#
392290	1	12	28" X 30" WITH 1" DRAIN ADAPTOR	34067	038753340678

Specialty Products™ Kahuna™ Outlet Box

Error proof no-knockout drains, Dual drain feature allows right or left outlet option, Fill stack & test directly from the box using EZ-fill Test Cap, Cosmetic plug for unused drain, Optional condensate with visible air gap, Top or bottom mountable valves



STOCK#	PACK	CASE	DESCRIPTION	MFG#	UPC#
392250▲	1	10	UNASSEMBLED BOX WITH MIP BALL VALVES - WHITE	OB-201	054374086641

Oatey® Centro II

Takes up less space and will fit almost anywhere, Made of PVC, Brackets and Faceplate made of HIPS, 2" Knockout drain caps, 2" Socket Hubs, Mountable with valves on top or bottom, 2 Piece valves come uninstalled, Two support brackets.



STOCK#	PACK	CASE	DESCRIPTION	MFG#	UPC#
392295	1	4	BOX ONLY FOR 1-1/2" TO 2" DRAINS	38120	038753381206

Quadro®

2" drain opening fits PVC or ABS schedule 40 DWV pipe. Box made of high impact polystyrene. 4 support brackets included for mountain. Easy to remove knockout. Snap-on faceplate frame accommodates up to 1" drywall.



STOCK#	PACK	CASE	DESCRIPTION	MFG#	UPC#
392230▲	1	12	1/4 Turn Brass Hammer Ball Valve-Copper Sweat INLET	38540	038753385402
392231▲	1	12	1/4 Turn Brass Hammer Ball Valve - CPVC INLET	38541	038753385419

Oatey® Fire-Rated Washing Machine Outlet Boxes can be used in all applications that require supply valves and waste drains recessed into a fire-rated wall.



STOCK#	PACK	CASE	DESCRIPTION	MFG#	UPC#
392296▲	1	6	1/4 TURN VALVES W/CPVC INLETS - WHITE	O38471	038753384719
392297▲	1	6	1/4 TURN VALVES W/ COPPER SWEAT INLETS - WHITE	O38470	038753384702

2X4™

Mount for condensate line, Knockout drain caps. Direct stud mount capability. Snap-on faceplate frame accommodates up to 1" drywall. Two support brackets and direct stud mounts for easy mounting. Box, Faceplate, and Brackets made from PVC.



STOCK#	PACK	CASE	DESCRIPTION	MFG#	UPC#
392298▲	1	12	1/4 TURN VALVES W/COPPER SWEAT INLETS-WHITE	O38201	038753382012

OxBox™

Boxes mount securely to stud or over studs. Separates supply and drainage systems into two stud bays. Separate boxes offer flexible layout. Durable ABS stands up to job site abuse. Drain knockout is easy to remove with pliers. With two MiniRester™ water hammer arresters. Debris covers included to protect boxes from drywall mud and paint. High-quality quarter-turn ball valves. 3/4" male hose-thread outlet connections.



STOCK#	PACK	CASE	DESCRIPTION	MFG#	UPC#
392221	1	12	NL OX WM FSWT MINI W/ FRM DSP	S696G2313MFPK4	739236100351

SharkBite®

STOCK#	PACK	CASE	DESCRIPTION	MFG#	UPC#
392205▲	1	10	WITH VALVES	24763	697285247635
392206▲	1		WITH VALVE AND HAMMER ARRESTORS	25031	697285013728



SECTION 6 • PAGE 22

Deflecto®

Dryer Vent Hoods

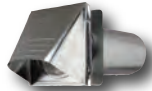
Supurr-Vent® Louvered Hood. Outdoor dryer vent cover.



STOCK#	PACK	CASE	DESCRIPTION	MFG#	UPC#
203300	1	48	4" HOOD - WHITE	HS4W/48	079916502120
203307	1	48	4" HOOD - BROWN	HS4B/48	079916500492
203322	1	18	4" HOOD WITH 11" PIPE - WHITE	SVHAW4/18	079916500430

Standard Dryer Hoods

Galvanized vent hoods.



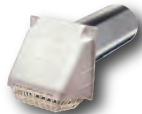
STOCK#	PACK	CASE	DESCRIPTION	MFG#	UPC#
203312	12	24	4" HOOD WITH PIPE AND COLLAR	GVH4	079916005553

Aluminum. 4" Diameter Vent Hood.



STOCK#	PACK	CASE	DESCRIPTION	MFG#	UPC#
203404	1	12	4" PIPE AND COLLAR	DAVAH4/12	079916200378

Plastic. 4" Diameter Vent Hood - Unassembled



STOCK#	PACK	CASE	DESCRIPTION	MFG#	UPC#
203315	1	18	4" HOOD WITH 11" PIPE - WHITE	RVHAW4/18	079916600468

Vent/Hood Kits

UL Listed. 8' Supurr-Flex® Clothes Dryer Transition Duct. Fire resistant. Flexible, easy to install, Supurr-Vent® Louvered Vent Hood. Opens with ease for maximum exhaust flow. Curved louvers for quieter operation. Durable weather resistant.



STOCK#	PACK	CASE	DESCRIPTION	MFG#	UPC#
203320	1	6	LOUVERED HOOD - WHITE	SK8WF	079916500225

Semi-rigid aluminum duct, Semi-rigid but flexible for easy installation. Fire resistant, Supurr-Vent® louvered vent hood. Opens with ease for maximum exhaust flow. Curved louvers for quieter operation. Durable weather resistant.



STOCK#	PACK	CASE	DESCRIPTION	MFG#	UPC#
203350	1	3	LOUVERED HOOD - WHITE	SK8WA	079916500157

UL Listed 8' Supurr-Flex® Clothes Dryer Transition Duct. Fire resistant. Flexible, easy to install. Wide Mouth Hood. Removable bird guard helps prevent birds and other pests from nesting in vent or entering home. Vent closure designed for maximum airflow. Durable weather resistant. Should self clean with wind or rain.



STOCK#	PACK	CASE	DESCRIPTION	MFG#	UPC#
203340	1	6	WIDE MOUTH HOOD-WHITE	RK8WF	079916600239

Lint Trap Kit

Includes: 4" Diameter x 8' Supurr-Flex® Metallic Duct, lint trap bucket, 2 Clamps. For indoor dryer venting. Quick, easy installation. Not recommended for gas dryers.



STOCK#	PACK	CASE	DESCRIPTION	MFG#	UPC#
203365	1	6	LINT TRAP KIT	LTF	079916501000

Cobra® Lint Brush

Used to remove lint in hard to reach areas of your dryer.



STOCK#	PACK	CASE	DESCRIPTION	MFG#	UPC#
203304▲	1	3	LINT BRUSH	53	088712000532

Dryer Vents

Galvanized paint grade

STOCK#	PACK	CASE	DESCRIPTION	UPC#
204180▲	1	2	3"	054374220465
204181▲	1	2	4"	054374204656
204182▲	1	2	6"	054374046584

Skinny Duct Aluminum Dryer Vent

Allows for dryer installation as little as 3" from wall. Adjustable 18"-31", can be cut to shorter lengths. Vertical, horizontal, or diagonal installation. All aluminum fire resistant ducting.

STOCK#	PACK	CASE	DESCRIPTION	MFG#	UPC#
203368	1	1	SKINNY DUCT DRYER VENT-ALUMINUM	DAF1	079916200385

Rodent/Bird Guard

Installs over most any type 3" or 4" dryer or bathroom exhaust vent

STOCK#	PACK	CASE	DESCRIPTION	MFG#	UPC#
203302	1	12	UNIVERSAL RODENT/ BIRD GUARD	UBGWL	079916201023

Dryer Ducting

90° Elbow. Aluminum.

STOCK#	PACK	CASE	DESCRIPTION	MFG#	UPC#
203311	1	12	4" X 90° ADJUSTABLE ELBOW	DE904	079916200163

Increaser/Reducer. Transitions between 3" and 4" Ducting

203310	1	12	3" TO 4" WHITE PLASTIC	IRB43	079916700113
--------	---	----	------------------------	-------	--------------

Supurr-Flex® Clothes Dryer Transition Duct

UL listed clothes dryer transition duct. Fire resistant. Flexible, easy to install.

STOCK#	PACK	CASE	DESCRIPTION	MFG#	UPC#
203477	1	6	4" X 8'	F0408B	079916430485
203480	1	6	4" X 5'	F0405B	079916430454
203481	1	3	4" X 20'	F0420B	079916431420
203485	1	1	4" X 50'	F0450	079916430041

Deflect-o Dryer Vent Hookup Kit

Semi-rigid aluminum duct. flexible strip gasket duct twists on hooker-upper protectors and slides over dryer vent and outlet pipe protects duct from being smashed behind dryer. No tools, tape or clamps required for installation.

STOCK#	PACK	CASE	DESCRIPTION	MFG#	UPC#
203351	1	25	4" X 8' SEMI-RIGID DUCTING W/END PROTECTORS	HUPK8WA/25	079916504278

Duct Connectors

Easily attaches one end of duct to dryer and other end to dryer vent. Protects duct from being smashed behind dryer which can lead to unsafe dryer operations and longer drying times.

STOCK#	PACK	CASE	DESCRIPTION	MFG#	UPC#
203313	1	6	4" WHITE DUCT CONNECTOR PLUS PROTECTOR	HUP	079916700236

Connects 4" ducting. Use clamps to secure.

203487	1	12	4" ALUMINUM	DAC4	079916200101
203488	1	12	4" ALUMINUM (RIDGES/CRIMP)	DAC4C	079916002019

Connects flexible semi-rigid, metallic or vinyl duct together quickly and easily. Duct twists easily into coupler for connection. No clamps, no tools, no tape.

209103	1	12	4" DUCT COUPLER - PLASTIC WHITE	FDC4	079916700229
--------	---	----	---------------------------------	------	--------------

SECTION 6 • PAGE 24



Dryer Vent Close Connector

STOCK#	PACK	CASE	DESCRIPTION	MFG#	UPC#
203369	1	6	4" DRYER CLOSE CONNECT	AMCC	079916199559

Duct Clamps

STOCK#	PACK	CASE	DESCRIPTION	MFG#	UPC#
203921	1	50	4" METAL BOLT CLAMP	MBC4	079916700052
203920	1	50	4" GALVANIZED WORM DRIVE	MC450	079916700090
203922	1	50	4" ADJUSTABLE RATCHET CLAMP PLASTIC (PAIR)	CX34	079916700007

Dryer Venting Box

High impact polystyrene. Meets UL Standard 94 HB tests for flammability. Improves dryer efficiency

STOCK#	PACK	CASE	DESCRIPTION	MFG#	UPC#
203370	1	12	DRYER VENTING BOX	DVBOX	079916202211

DryerBox®

STOCK#	PACK	CASE	DESCRIPTION	MFG#	UPC#
203325	1		3-1/2" DEEP DOWN VENTING FOR 2" X 4" WALL	DB-3D	851715001611
203326	1		4-1/4" DEEP DOWN VENTING FOR 2" X 6" WALL	DB-4D	851715001710
203327	1		3-1/2" DEEP UP VENTING FOR 2" X 4" WALL	DB-350	851715001314
203328	1		4-1/4" DEEP UP VENTING FOR 2" X 6" WALL	DB-425	851715001413
203329	1		4-1/4" DEEP UP OR DOWN VENTING FOR 2" X 4" OR 6" WALLS	DB480	851715001482

Dryer Exhaust Elbows

Inovte Dryer-El® 90-Degree Dryer elbow has 22-gauge aluminized steel construction for durability. It features fastening tabs for hook and twist assembly. It is suitable for dryer exhaust fitting, replacement to the standard 4-Inch elbow and efficient elbows for dryer venting.

STOCK#	PACK	CASE	DESCRIPTION	MFG#	UPC#
203330	1		45° LONG TURN DRYER ELBOW	LT 45	851715001833
203331	1		90° LONG TURN DRYER ELBOW	LT 90	851715001819

Metal Dryer Vent Clamps

Heavy duty cadmium plated steel dryer vent clamp. Fits 4" I.D. vent hose.

STOCK#	PACK	CASE	DESCRIPTION	MFG#	UPC#
109801	6	48	4" CLAMP	2 PER CARD	054374013906
203920	50		4" CLAMP	BULK	07991600090

Ice-Maker Boxes



SharkBite®

Ice Maker Outlet Box

The SharkBite Ice Maker Outlet Box is integrated with SharkBite ends to allow for quick & easy installation of a water main supply to an appliance. The SharkBite Ice Maker Boxes can be used on Copper, CPVC, PEX, and PE-RT.

STOCK#	PACK	CASE	DESCRIPTION	MFG#	UPC#
392200▲	1	10	WHITE WITH VALVE	25032	697285013735
392201▲	1	10	WITH VALVE AND WATER HAMMER ARRESTOR	25033	697285013742

Sioux Chief®

Ox Box™ Ice maker Box



Boxes mount securely to stud or over studs. Durable ABS stands up to job site abuse. With MiniRester water hammer arrester. Box mounts easily to stud for top or bottom supply. Debris covers included to protect boxes from drywall mud and paint. High-quality quarter-turn ball valve. 1/4" O.D. compression outlet connection. The debris cover protects valves from drywall mud and paint during construction.

STOCK#	PACK	CASE	DESCRIPTION	MFG#	UPC#
392220	1	5	1/2" MIP/SWEAT WITH ARRESTOR	696-G1010MFPK4	739236100108

Oatey®

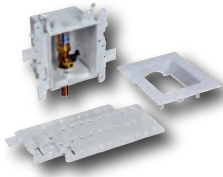
Square Ice Maker Box



2 support brackets, Provides quick, safe water supply and shut off for refrigerator ice maker and water dispenser. High impact polystyrene. Valves comply with requirements of NSF 61, Section 9. Box Dimensions: 6"W x 6"H x 3-3/8"D. Faceplate Dimensions: 8-1/4"W x 8-1/4"H.

STOCK#	PACK	CASE	DESCRIPTION	MFG#	UPC#
392235	1	6	WHITE W/1/4 TURN VALVE – CPVC INLET	39155	038753391557
392236	1	6	WHITE W/1/4 TURN VALVE – COPPER SWEAT INLET	39156	038753391564

Moda™ Universal Box



Designed to meet the needs of plumbing contractors for, ice maker applications. A universal single box platform provides maximum versatility, installation simplicity and rugged reliability. MODA Supply Box System is the ultimate solution for speed and flexibility. Brass valving with hammer arrestors.

STOCK#	PACK	CASE	DESCRIPTION	MFG#	UPC#
392232	1	12	1/4" OD BRASS VALVE W/COPPER SWEAT INLET	37687	038753376875
392233	1	12	1/4" OD BRASS VALVE W/CPVC INLET	37688	038753376882

Specialty Products®

Slim-line Ice Maker Boxes

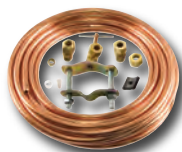


Slim-line profile for 1" backing. Ribbed walls add support for greater strength and better alignment. Adjustable face plate accommodates up to 5/8" wall thickness. Top and bottom nailing tabs assure solid installation. Constructed of high-impact plastic. Valve certified to ASME A112.18.1 Standard. Quarter Turn Ball Valve. Dimensions: Box: 5-3/16" x 5-3/16" x 2-1/2". Faceplate: 6-13/16" x 6-13/16". All valves are 1/2" inlet x 1/4" outlet, unless otherwise noted. All boxes are assembled.

STOCK#	PACK	CASE	DESCRIPTION	MFG#	UPC#
392243▲	1	10	1/2" MIP X 1/4" COMPRESSION - BEIGE	OB-800-LL	671436248498
392244▲	1	10	1/2" MIP X 1/4" COMPRESSION - WHITE	OB-801-LL	671436243127

Ice-Maker Repair Parts

Ice-Maker Hook-Up Kit



Taps into water supply and provides water flow to refrigerators with automatic ice-makers, humidifiers or drinking fountains. Includes component parts and instructions necessary for quick, easy installation. Kit contains: 25 feet 1/4" O.D. tubing, 1/4" compression saddle valve, brass tubing inserts (2) and 1/4" compression union.

STOCK#	PACK	CASE	DESCRIPTION	UPC#
107624▲	6		COPPER TUBING	054374791279
107619▲	6		POLYETHYLENE TUBING	054374912797

▲ For Proposition 65 warnings please refer to pages 48-59 at the end of this section.

Ice-Maker Repair Parts and Evaporative Cooler Parts



Ice-Maker Adapter

Adapts male hose thread to 1/4" compression thread.

STOCK#	PACK	CASE	DESCRIPTION	UPC#
122821	12	144	3/4" FHT X 1/4" COMPRESSION	054374201563

Evaporative Cooler Parts

Cooler Motors

Motors are designed to be used in high moisture environments. They feature corrosion protected shaft and rotor with permanently lubricated bearings. They are recognized by UL as component parts. Motors are 60 HZ single phase, 1725 RPM 1 speed and 1725/1140 RPM 2 speed. 115 VAC. 1/2" shaft. Copper wound.



STOCK#	PACK	CASE	DESCRIPTION	MFG#	UPC#
233331▲	1	1	1-SPEED 1/3 HP	2201	026529220101
233501▲	1	1	1-SPEED 1/2 HP	2203	026529220309
233502▲	1	1	2-SPEED 1/2 HP	2204	026529220408
233752▲	1	1	2-SPEED 3/4 HP	2206	026529220606

Float Valves

Used to regulate cooler water level.



STOCK#	PACK	CASE	DESCRIPTION	MFG#	UPC#
107632▲	6	36	1/4" COMPRESSION STANDARD-BRASS		054374062386
236102▲	1	50	1/4" COMPRESSION INLET -BRASS -BULK	4154	026529415309
107633▲	6	36	1/4" COMPRESSION ECONOMY-PLASTIC		054374062379
236066▲	1	50	1/4" COMPRESSION INLET -PLASTIC -BULK	4102	026529410106
107634▲	6	36	3/8" MIP OR 1/8" FIP		054374062393
236103▲	1	10	3/8" COMPRESSION INLET -BRASS -BULK	4178	026529417808



High capacity red brass valves with 1/4"-20 threaded arm for float rod.

236204	12	72	1/2" MIP INLET AND OUTLET - BRASS	FV-303P	082647095618
--------	----	----	-----------------------------------	---------	--------------

Cooler Accessories

For cooler bearings and some cooler motors with oil-able bearings - lubricate shaft bearings at the start of every season and every 60 days during season - inhibits rust and oxidation.



STOCK#	PACK	CASE	DESCRIPTION	MFG#	UPC#
236285	1	12	ZOOM SPOUT OILER-4 OZ	5713	026529571302



A time release cube that destroys unpleasant odors caused by algae and mildew. Helps to keep harmful minerals in suspension.

236301	1	12	FRESHAIRES COOLER CAKE	5255	026529525503
--------	---	----	------------------------	------	--------------

Cooler Drain Valves

Screws onto existing hose bibb allowing a water takeoff for evaporative coolers, etc.



STOCK#	PACK	CASE	DESCRIPTION	MFG#	UPC#
107608▲	10	100	3/4" FHT X MHT WITH A 1/8" FIP TAP	CARDED	054374011117
237023▲	10	100	3/4" FHT X MHT WITH A 1/8" FIP TAP	BULK	054374050567

Evaporative Cooler Parts and Dishwasher Accessories



Cooler Drains

STOCK#	PACK	CASE	DESCRIPTION	UPC#
127603▲	12	144	PLASTIC COOLER DRAIN BUSHING	BAGGED 054374086030
127600▲	12	144	BRASS COOLER DRAIN BUSHING	BAGGED 054374086009



Tapped Hose Caps

STOCK#	PACK	CASE	DESCRIPTION	UPC#
127607▲	12	144	1/8" TAP WITH 3/4" FHT	BAGGED 054374086801



Tapped Extension Pieces

STOCK#	PACK	CASE	DESCRIPTION	UPC#
127611▲	12	144	BRASS 1/8" TAP 1/2" MIP X FIP	BAGGED 054374880669
127612▲	12	144	BRASS 1/8" TAP 3/4" MIP X FIP	BAGGED 054374806690

Dishwasher Accessories



Drain Hose

Reinforced Rubber. IAPMO approved.

STOCK#	PACK	CASE	DESCRIPTION	MFG#	UPC#
119810▲	6		7/8" X 24"		054374134526

Reinforced rubber hose. Used to drain dishwashers, the 5/8" hose is used between the dishwasher and the air gap and the 7/8" hose is used between the air gap and the waste disposer or branch tailpiece.



STOCK#	PACK	CASE	DESCRIPTION	MFG#	UPC#
250021▲	1		5/8" ID X 50' COIL -IAPMO-BOXED	PF506N	781889258262
250022▲	1		7/8" ID X 50' COIL - BOXED	PF507N	781889258279
250026▲	1		5/8" ID X 50' REEL - PVC REINFORCED		054374908264
250028▲	1		7/8" ID X 25' REEL - RUBBER		054374145461
250030	1		5/8" ID X 1" OD X 50' REEL		054374908264
250032	1		7/8" ID X 25' REEL		054374145461



Dishwasher Drain Kit

Dishwasher drain kit. Contains 36" IAPMO approved hose, 3 stainless steel hose clamps and air gap.

STOCK#	PACK	CASE	DESCRIPTION	UPC#
119807▲	12		AIR GAP-STAINLESS STEEL	BAGGED 054374427147
119808▲	12		AIR GAP-BRUSHED NICKEL	BAGGED 054374270781
119809▲	12		AIR GAP-CHROME PLATED	BAGGED 054374038732



3/8" O.D. Dishwasher Supply

Stainless Steel Braid Reinforced. 3/8" O.D. compression nut x 3/8" O.D. compression nut.

STOCK#	PACK	CASE	DESCRIPTION	UPC#
109658	50		3/8" OD X 3/8" OD X 60"	HANG TAG 054374121229
109660	50		3/8" OD X 3/8" OD X 90"	HANG TAG 054374121236
109661	50		3/8" OD X 3/8" OD X 60" W/3/4" FHT ELBOW	HANG TAG 054374196340

Dishwasher Accessories and Appliance Installation Kits

Proflo® 3/8" O.D. Dishwasher Connector Kits



This PROFLO® kit includes a stainless steel braided hose and two brass elbow fittings: 3/8" MIP x 3/8" OD DW elbow and 3/8" MIP x 3/4" FHT DW elbow.

STOCK#	PACK	CASE	DESCRIPTION	MFG#	UPC#
109663▲	1	50	3/8" OD X 3/8" OD X 72" WITH FHT ELBOW	PFXSD6C72ET	781889235102

BrassCraft®



Speedl Plumb® PLUS flexible braided polymer dishwasher connector with 3/8" compression elbow adaptor. Eight-sided pneumatic crimp to greater dependability and reliable nut-to-hose connections. Pressure rating: 125 psi maximum. Temperature rating: 40° F to 140° F

STOCK#	PACK	CASE	DESCRIPTION	MFG#	UPC#
210001	1	10	3/8" OD X 3/8" OD X 72"	BB172DW6P	026613141800

Swivel Dishwasher Adapter Elbow



For dishwashers with male inlet.

STOCK#	PACK	CASE	DESCRIPTION	MFG#	UPC#
109319▲	6	48	3/8" X 3/4" COMPRESSION X FHT	CARDED	054374003600
129319▲	6	72	3/8" X 3/4" COMPRESSION X FHT	BAGGED	054374047697

Appliance Installation Kits

Universal Dishwasher Installation Kit



Stainless Steel connector with 3/8" compression ends. Includes a 3/8" compression X 3/4" female hose thread brass elbow and a 3/8" compression X 3/8" MIP elbow.

STOCK#	PACK	CASE	DESCRIPTION	MFG#	UPC#
109662▲	1	6	48"	CARDED	054374181414
119657▲	1	6	48"	BAGGED	054374404162
119658▲	1	6	60"	BAGGED	054374288892
119659▲	1	6	72"	BAGGED	054374888924

Dishwasher Extension Installation Kit



Includes a 3/8" compression X compression supply with one female end, hose clamp, pipe strap (1/2" & 3/4"), wire nuts, 3/8" Romex connector and a 6' pigtail.

STOCK#	PACK	CASE	DESCRIPTION	MFG#	UPC#
119850▲	1	6	EXTENSION INSTALL KIT	BAGGED	054374192380

Dual Fuel Range Kit



Includes 5/8" OD X 48" gas connector with polymer base coating protection. Steel fittings included: 3/4" FIP X 5/8" FLARE and 3/4" MIP or 3/4" FIP X 5/8" FLARE. 4-Ft four wire dryer cord, 50 AMP. Cord includes strain relief kit 4-Wire Cord. Fits more homes built prior to 1996. Ring terminals for secure connections.

STOCK#	PACK	CASE	DESCRIPTION	MFG#	UPC#
119885	1		DUAL FUEL RANGE INSTALL KIT	BAGGED	054374670123

Dryer Installation Kits



Includes 1/2" OD X 36" gas connector with polymer base coating protection. Steel fittings included: 1/2" FIP X 1/2" FLARE and 1/2" MIP or 3/8" FIP X 1/2" FLARE. 4" X 8-FT super flex duct. UL listed clothes dryer transition duct. Fire resistant. Two 4" tension clamps.

STOCK#	PACK	CASE	DESCRIPTION	MFG#	UPC#
119860	1		GAS DRYER INSTALLATION KIT	BAGGED	054374923809

4-Ft dryer cord includes strain relief kit. Fits More Homes Built Prior to 1996. Ring terminals for secure connections. 4" X 8-FT super flex duct. UL listed clothes dryer transition duct. Fire resistant. Two 4" tension clamps.

STOCK#	PACK	CASE	DESCRIPTION	MFG#	UPC#
119870	1		3 WIRE 30 AMP ELECTRIC DRYER	BAGGED	054374238095
119875	1		4 WIRE 30 AMP ELECTRIC DRYER	BAGGED	054374380954

Heating and Cooling Accessories

ProSelect™ Floor Registers

All steel welded construction. Heavy gauge steel construction for floor use. Multi-angled fin setting. Foot operated damper.

STOCK#	PACK	CASE	DESCRIPTION	MFG#	UPC#
190527▲	1	20	2" X 10" WHITE	PSFDWK10	781889081037
190528▲	1	30	2" X 12" WHITE	PSFDWK12	781889081044
190529▲	1	30	2" X 14" WHITE	PSFDWK14	781889132180
190537▲	1	20	4" X 10" WHITE	PSFDWP10	781889081051
190538▲	1	20	4" X 12" WHITE	PSFDWP12	781889081068
190539▲	1	20	4" X 14" WHITE	PSFDWP14	781889081075
190562▲	1	20	6" X 14" WHITE	PSFDWU14	781889140666
190535▲	1	20	2" X 10" BROWN	PSFDBK10	781889080955
190534▲	1	30	2" X 12" BROWN	PSFDBK12	781889080962
190536▲	1	30	2" X 14" BROWN	PSFDBK14	781889132173
190530▲	1	20	4" X 10" BROWN	PSFDBP10	781889080986
190532▲	1	20	4" X 12" BROWN	PSFDBP12	781889080993
190533▲	1	20	4" X 14" BROWN	PSFDBP14	781889081006
190563▲	1	20	6" X 14" BROWN	PSFDBU14	781889132210

Sidewall Registers

All steel welded construction. 1/2" spaced fins at 40 degrees. For both sidewall and ceiling applications. Ideal for shallow duct installation. Two, three and four-way air patterns. Integral multi-shutter damper. Screws included.

STOCK#	PACK	CASE	DESCRIPTION	MFG#	UPC#
190504▲	1	20	2 WAY 8" X 4" WHITE	PS2WWXP	781889081112
190506▲	1	20	2 WAY 8" X 6" WHITE	PS2WWXU	781889081129
190509▲	1	20	2 WAY 10" X 4" WHITE	PS2WW10P	781889081136
190510▲	1	20	2 WAY 10" X 6" WHITE	PS2WW10U	781889081143
190511▲	1	20	2 WAY 12" X 4" WHITE	PS2WW12P	781889081150
190512▲	1	20	2 WAY 12" X 6" WHITE	PS2WW12U	781889081167
190513▲	1	10	2 WAY 12" X 12" WHITE	PS4WW1212	781889081310
190501▲	1	20	2 WAY 14" X 4" WHITE	PS2WW14P	781889081181
190514▲	1	20	2 WAY 14" X 6" WHITE	PS2WW14U	781889081198
190516▲	1	10	2 WAY 14" X 8" WHITE	PS2WW14X	781889081204
190520▲	1	20	3 WAY 10" X 6" WHITE	PS3WW10U	781889081242
190521▲	1	20	3 WAY 8" X 4" WHITE	PS3WWXP	781889081228
190522▲	1	20	3 WAY 12" X 6" WHITE	PS3WW12U	781889081259
190524▲	1	20	3 WAY 14" X 6" WHITE	PS3WW14U	781889081266
190517▲	1	10	4 WAY 10" X 10" WHITE	PS4WW1010	781889081303
190518▲	1	20	4 WAY 6" X 6" WHITE	PS4WWUU	781889081280
190519▲	1	20	4 WAY 8" X 8" WHITE	PS4WWXX	781889081297

Curved Blade Sidewall/Ceiling Registers

Aluminum construction. For both sidewall and ceiling applications. One-way air pattern. Adjustable curved blades. Multi-shutter damper.

STOCK#	PACK	CASE	DESCRIPTION	MFG#	UPC#
190505▲	1	20	8" X 4" WHITE	PSA1CWXP	781889195697
190500▲	1	20	10" X 6" WHITE	PSA1CW10U	781889176221
190502▲	1	20	12" X 6" WHITE	PSA1CW12U	781889195673
190503▲	1	20	14" X 6" WHITE	PSA1CW14U	781889176238

SECTION 6 • PAGE 30

Sidewall Return Grilles

All steel welded construction. 1/2" spaced fins at 40 degrees. 5/16" margin turn-back. Screws included.



STOCK#	PACK	CASE	DESCRIPTION	MFG#	UPC#
190541▲	1	20	10" X 6" WHITE	PSRGW10U	781889081488
190540▲	1	20	10" X 8" WHITE	PSRGW10X	781889167458
190543▲	1	20	10" X 10" WHITE	PSRGW1010	781889081495
190542▲	1	20	12" X 6" WHITE	PSRGW12U	781889081518
190546▲	1	20	12" X 12" WHITE	PSRGW1212	781889081532
190566▲	1	10	12" X 20" WHITE	PSRGW1220	781889081549
190544▲	1	20	14" X 6" WHITE	PSRGW14U	781889081563
190545▲	1	20	14" X 8" WHITE	PSRGW14X	781889081570
190579▲	1	20	14" X 14" WHITE	PSRGW1414	781889081594
190567▲	1	10	14" X 20" WHITE	PSRGW1420	781889081600
190568▲	1	10	14" X 24" WHITE	PSRGW1424	781889081617
190547▲	1	20	16" X 8" WHITE	PSRGW16X	781889132241
190548▲	1	10	16" X 16" WHITE	PSRGW1616	781889081624
190551▲	1	10	18" X 24" WHITE	PSRGW1020	781889081501
190553▲	1	10	20" X 14" WHITE	PSRGW2014	781889081686
190556▲	1	10	20" X 20" WHITE	PSRGW2020	781889081709
190558▲	1	10	24" X 14" WHITE	PSRGW2414	781889081761
190560▲	1	5	24" X 20" WHITE	PSRGW2420	781889081785
190583▲	1	3	30" X 20" WHITE	PSFGW3020	781889081464

Filter Grills

All steel welded construction. 1/2" spaced fins at 40 degrees. Removable face with concealed latches and hinges for easy installation and cleaning.



STOCK#	PACK	CASE	DESCRIPTION	MFG#	UPC#
190580▲	1	5	20" X 14" WHITE	PSFGW2014	781889081396
190582▲	1	5	20" X 20" WHITE	PSFGW2020	781889081419
190584▲	1	5	24" X 14" WHITE	PSFGW2414	781889081433

Round Ceiling Diffusers

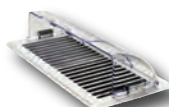
All-steel construction. Concentric rings deflect air stream 360° for maximum performance.



STOCK#	PACK	CASE	DESCRIPTION	MFG#	UPC#
190596▲	1	30	6" WHITE	PSRCDWU	781889140697
190594▲	1	30	8" WHITE	PSRCDWX	781889140703

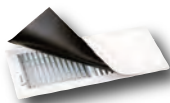
Air Deflectors

Air deflector. Clear plastic. Permanent magnets.



STOCK#	PACK	CASE	DESCRIPTION	MFG#	UPC#
190005	1	12	10"-14" ADJUSTABLE	99/12	079916000992

Magnetic Vent Covers



STOCK#	PACK	CASE	DESCRIPTION	MFG#	UPC#
190015	1	12	8" X 15" WHITE 3-PACK	MVC" X 815	079916000312

Duct Booster Fans

Increases air circulation. Lowers heating and cooling costs. Metal construction. No maintenance motor. Straightforward installation. 0.4 amp, 37 watts.



STOCK#	PACK	CASE	DESCRIPTION	MFG#	UPC#
190856	1	6	240 CFM, 6" DIAMETER X 7-3/4" DEEP	DIV625AF6	095247117178
190858	1	4	420 CFM, 8" DIAMETER X 8" DEEP	DIV625AF8	095247117185
190860	1	2	650 CFM, 10" DIAMETER X 8-1/2" DEEP	DIV625AF10	095247053537

Flexible Ducting

For multiple uses - dryer, bathroom or kitchen venting. Semi-rigid but flexible for easy installation. Fire resistant.



STOCK#	PACK	CASE	DESCRIPTION	MFG#	UPC#
209003	1	16	3" X 8' ALUMINUM DUCT	A038/16	079916004594
209004	1	9	4" X 8' ALUMINUM DUCT	AO48" X /9	079916424026
209005	1	5	5" X 8' ALUMINUM DUCT	AO58" X /5	079916005140
209006	1	4	6" X 8' ALUMINUM DUCT	AO68/4	079916424071
209007	1	5	7" X 8' ALUMINUM DUCT	AO78/5	079916424088
209008	1	4	8" X 8' ALUMINUM DUCT	AO88/4	079916424095

Flexible Insulated Ducting

ATCO #070 Series ducts are UL 181, Class 1 Air Ducts and are manufactured with a tri-directional fiberglass scrim reinforced, grey polyester outer jacket. The inner core is air-tight and designed for low-to-medium operating pressures in HVAC systems. With An R Value of 4.2.



STOCK#	PACK	CASE	DESCRIPTION	MFG#	UPC#
190706	1	1	6" X 25' BOXED	070625	671094265202
190708	1	1	8" X 25' BOXED	070825	671094265226
190710	1	1	10" X 25' BOXED	0701025	671094265240

Flexible Class 1 Insulated Air Ducting

Flexible duct is constructed with a spring steel wire helix, encapsulated in a 2-ply, air-tight inner core. Fiberglass insulation encompass the core and a unique metallized, reinforced vapor barrier surrounds the entire duct. UL Listed & Labeled, 10 Year limited warranty, GREENGUARD Gold Certification, Formaldehyde free (see www.jplflex.com for more info). 3/8" oversized inner core and Certified R-Values of R6.



STOCK#	PACK	CASE	DESCRIPTION	MFG#	UPC#
190806	1	1	6" X 25' BOXED	MHP25R66	814400012033
190808	1	1	8" X 25' BOXED	MHP25R68	814400012507
190810	1	1	10" X 25' BOXED	MHP25R610	814400012071
190812	1	1	12" X 25' BOXED	MHP5R612	814400012095

Tensioning Tool with Auto Cut Off

For continuous use on-the-job. The TY6 Tensioning Tool is designed for a heavy user of nylon ties. An adjustment knob allows installer to set desired tension for securing flex duct to a take-off collar. When the tie is tight, a breakaway spring mechanism releases the tool's lower handle, causing the blade to engage and automatically flush cut off the excess tail of the nylon tie.



STOCK#	PACK	CASE	DESCRIPTION	MFG#	UPC#
190802	1	3	MALCO AUTO CUT OFF TIE TOOL	TY6	686046521442

Line Set Tape

Cold weather rated, For indoor and outdoor use, High tack mold inhibiting adhesive, Made in the USA, Superior holding strength, UL723 classified, UV resistant.



STOCK#	PACK	CASE	DESCRIPTION	MFG#	UPC#
190830	24	864	2" X 60 YARD LINE SET TAPE BLACK	V1507BPRTDK60	750351150717

A superior closure system for use with class 1 flexible air duct and air connectors. Heavy duty patch, bundle, and job site repairs. Dryer vent sealing.



STOCK#	PACK	CASE	DESCRIPTION	MFG#	UPC#
190832	24	144	2" X 60 YARD METALLIZED DUCT TAPE	N558CA	742366005526



Poly Tape

STOCK#	PACK	CASE	DESCRIPTION	MFG#	UPC#
190834	24	144	2" ADHESIVE POLY TAPE	P36717K	742366010629

FlexiFix Metallized Tape

Long-life acrylic adhesive. Hand-tearable & contractor-friendly. No solvent odor. Easy-to-read UL marking. Excellent resistance to mold and mildew growth. Good all temperature performance (-10 to 250 °F) Contractor tough closure system for use on flexible air ducts and connectors. Sealing dryer vent connections. Seals and patches reflective and bubble insulation materials.



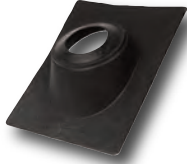
STOCK#	PACK	CASE	DESCRIPTION	MFG#	UPC#
190836	36	144	1.89" X 120 YARD METALLIZED TAPE	BT555M	742366006684

▲ For Proposition 65 warnings please refer to pages 48-59 at the end of this section.

Oatey®

Flex-Flash™ No-Caulk® Roof Flashing

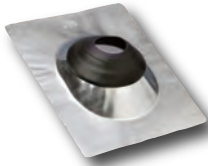
Oatey® Flex Flash No-Calk® Roof Flashings are manufactured with a 100% flexible, foldable plastic base for commercial and residential applications that require a watertight seal for roof penetrations around the plumbing vent pipe.



STOCK#	PACK	CASE	DESCRIPTION	MFG#	UPC#
203471	1	12	1-1/2"	14009	038753140094
203472	1	12	2"	14012	038753140124
203473	1	12	3"	14038	038753140384
203474	1	12	4"	14041	038753140414

Galvanized No-Calk® Roof Flashings/Standard Base

Oatey Galvanized Base No-Calk Roof Flashings can be used in commercial and residential applications where a watertight seal for roof penetrations around the plumbing vent pipe is required.



STOCK#	PACK	CASE	DESCRIPTION	MFG#	UPC#
203495	1	6	1-1/2"	11841	038753118413
203496	1	6	2"	11853	038753118536
203497	1	6	3"	11867	038753118673
203498	1	6	4"	11880	038753118802

Rain Collar For No-Calk® Roof Flashings



STOCK#	PACK	CASE	DESCRIPTION	MFG#	UPC#
203490	1	6	1-1/2"	14205	038753142050
203491	1	6	2"	14206	038753142067
203492	1	6	3"	14207	038753142074
203493	1	6	4"	14208	038753142081

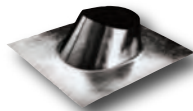
Vertical Side Flashing

Designed with a tear out collar to accommodate pipe size use from 1/2" to 2-1/2" or 3" to 6". Used in commercial or residential applications where a water-tight seal of piping penetrations through outside walls is required. Features a hard plastic panel with an elastomeric collar that seals around the pipe. Won't fade, crack or rust. Rated to 180°F.



STOCK#	PACK	CASE	DESCRIPTION	MFG#	UPC#
203460	1	12	FOR 1/2" TO 2 1/2" PIPE	12805	038753128054
203461	1	12	FOR 3" TO 6" PIPE	12806	038753128061

American Metals Standard



STOCK#	PACK	CASE	DESCRIPTION	MFG#	UPC#
203501	1	12	1/2" GALVANIZED	AME12F	095029100350
203502	1	12	3/4" GALVANIZED	A34F	095029300200
203503	1	12	1" GALVANIZED	A1F	095029300354
203505	1	24	1-1/2" GALVANIZED	A112F	095029300606
203506	1	24	2" GALVANIZED	A2F	095029300705
203507	1	12	3" GALVANIZED	3APF	735623306313
203515	1	24	4" GALVANIZED	A112FFU	095029307957

All-Pitch

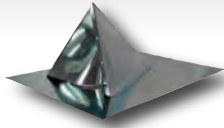


STOCK#	PACK	CASE	DESCRIPTION	MFG#	UPC#
203523	1	12	3" GALVANIZED	A3CF	095029302204
203524	1	12	4" GALVANIZED	A4CF	095029302501
203525	1	12	5" GALVANIZED	A5CF	095029302808
203526	1	12	6" GALVANIZED	A6CF	095029303003

Sheet Metal Roof Flashing

Famco® Cricket Flashing

Cricket flashing (CF) is designed to split snow and prevent it from damaging pipes and other roof protrusions. The CF features a large flange for easy installation and leak protection. This pipe flashing is for use on small diameter PVC vent pipes.



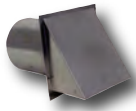
STOCK#	PACK	CASE	DESCRIPTION	MFG#	UPC#
203556	1	1-1/2" & 2"			054374162109
203557	1	3" & 4"			054374621095

Conductor Flashings



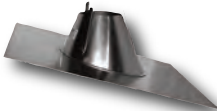
STOCK#	PACK	CASE	DESCRIPTION	MFG#	UPC#
203693▲	1	3" 26 GAUGE			054374095490
203694▲	1	4" 26 GAUGE			054374954902
203696▲	1	6" 26 GAUGE			054374549023

Galvanized with Screen



STOCK#	PACK	CASE	DESCRIPTION	MFG#	UPC#
203558	1	3"			054374210954
203559	1	4"			054374109548

Two Piece Roof Jacks



STOCK#	PACK	CASE	DESCRIPTION	MFG#	UPC#
203591	1	6	4"		054374410781
203593	1	6	6"		054374083848
203595	1	6	7"		054374384860
203585	1	6	7"	7RARB	
203597	1	6	8"		054374486076
203587	1	6	8"	8RARB	

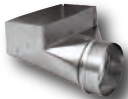
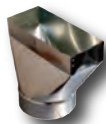
Two Piece Roof Jack Caps



STOCK#	PACK	CASE	DESCRIPTION	MFG#	UPC#
203592	1	6	4"		054374108022
203594	1	6	6"		054374838486
203596	1	6	7"		054374848607
203586	1	6	7"	7RAT	
203598	1	6	8"		054374860760
203588	1	6	8"	UCBRAT	

Single Wall Vent Fittings

Register Boot



STOCK#	PACK	CASE	DESCRIPTION	MFG#	UPC#
204183▲	1	2	3-1/4" X 10" X 6" STRAIGHT		054374465842
204184▲	1	2	4" X 12" X 6" STRAIGHT		054374658428
204185▲	1	2	4" X 14" X 6" STRAIGHT		054374584284
204186▲	1	2	4" X 10" X 6" STRAIGHT		054374842841
204187▲	1	2	4" X 10" X 6" ANGLE		054374428410
204188▲	1	2	4" X 12" X 6" ANGLE		054374284108
204189▲	1	2	4" X 14" X 6" ANGLE		054374841080

Perimeter Boot



STOCK#	PACK	CASE	DESCRIPTION	MFG#	UPC#
203692▲	1		12" X 4" X 6" NO PG 26 GAUGE	PH1	054374616657

Riser Pipe

STOCK#	PACK	CASE	DESCRIPTION	MFG#	UPC#
203865▲	1	80	3.25" X 10" X 3' 26 GAUGE	5420	054374144976

Universal Caps

Round Ameri-Caps. Aluminum Only.



STOCK#	PACK	CASE	DESCRIPTION	UPC#
204101	1	12	3"	A3CW 095029210905
204102	1	12	4"	A4CW 095029210929
204103	1	12	5"	A5CW 095029209312
204106	1	12	6"	A6CW 095029209336
204107	1	4	7"	A7CW 095029117860

Conductor Pipe Caps

For use with conductor pipe only. Galvanized.



STOCK#	PACK	CASE	DESCRIPTION	MFG#	UPC#
204111	1	10	3"	A3CPC 095029560000	
204112	1	6	4"	A4CPC 095029560055	
204114	1	6	6"	A6CPC 095029560154	

T Top Flashing



STOCK#	PACK	CASE	DESCRIPTION	MFG#	UPC#
204804	1	10	4"	4RJ26 735623305514	
204807	1	8	7"	7RJ26 735623305613	

Bell Increasers



STOCK#	PACK	CASE	DESCRIPTION	MFG#	UPC#
204122	1	12	3" X 4"	A34BTI 095029348264	

Bell Reducers



STOCK#	PACK	CASE	DESCRIPTION	MFG#	UPC#
204131	1	12	4" X 3"	A43BTR 095029348868	
204135	1	6	5" X 4"	A54BTR 095029348004	
204132	1	6	6" X 4"	A64BTR 095029348103	
204140	1	6	6" X 5"	A65BTR 095029348059	
204152	1	3	7" X 4"	A74BTR 095029348127	

Adjustable Elbows

Adjusts up to 90° Galvanized



STOCK#	PACK	CASE	DESCRIPTION	MFG#	UPC#
204161	1	55	3"-28 GAUGE	3"ADJ 735623301714	
204162	1	50	4"-28 GAUGE	4"ADJ 735623301813	
204163	1	32	5"-28 GAUGE	5"ADJ 735623301912	
204164	1	18	6"-28 GAUGE	6"ADJ 735623302018	
204165	1	18	7"-28 GAUGE	7"ADJ 735623302117	

Vent Tees

Galvanized



STOCK#	PACK	CASE	DESCRIPTION	MFG#	UPC#
204171	1	6	3"	A3VT 095029349650	
204172	1	6	4"	A4VT 095029349704	
204174	1	6	6"	A6VT 095029349759	

Vent Pipe

30" Lengths. Galvanized.



STOCK#	PACK	CASE	DESCRIPTION	MFG#	UPC#
204301	1	36	3" X 30"		735623300113
204302	1	20	4" X 30"		735623300212
204303	1	10	5" X 30"		735623300410
204304	1	10	6" X 30"		735623300618
204305	1	10	7" X 30"		735623300816

Single Wall Vent Fittings

American Metal Vent Pipe

STOCK#	PACK	CASE	DESCRIPTION	MFG#	UPC#
209020	1	24	3" X 30"	3VP	095029338555
204306	1	6	8" X 30"	8VP	095029338852

Bucket Hangers

STOCK#	PACK	CASE	DESCRIPTION	MFG#	UPC#
204740	1	12	3" TO 4" GALVANIZED	A34AB	095029314658

Round Vent Collars

Galvanized

STOCK#	PACK	CASE	DESCRIPTION	MFG#	UPC#
204753	1	12	3"	A3CVC	095029328303
204754	1	12	4"	A4CVC	095029328358

Pipe Hangers

Galvanized

STOCK#	PACK	CASE	DESCRIPTION	MFG#	UPC#
204773	1	24	3"	A3VPH	095029336155
208343	1	24	4"	A4VPH	095029336209

Adapter

Adapts Rectangular vent hoods to Round Ducting - Galvanized.

STOCK#	PACK	CASE	DESCRIPTION	MFG#	UPC#
204785	1	6	3-1/2" X 10" - 7"	ADP	735623303213

Flex Connectors

Single-wall corrugated aluminum easily connects from the appliance to AmeriVent Type B gas vent. May be compressed 4 inches per foot to shorten lengths. Sturdy Galvalume ends offer AmeriVent's proven snap-lock design. This product can only be used in the room with the equipment in occupied spaces, not in unoccupied spaces such as attics or crawl spaces. It cannot be used to pass through a wall, roof or ceiling, and cannot be totally enclosed.

STOCK#	PACK	CASE	DESCRIPTION	MFG#	UPC#
208006	1	6	3" X 12" ROUND	3FC12	095029111073
208007	1	6	4" X 12" ROUND	4FC12	095029112070

Double Wall Vent Fittings

Universal Adapters

The universal adapter offers secure, listed connections between AmeriVent Type B gas vent and gas vents of other manufacturers.

STOCK#	PACK	CASE	DESCRIPTION	MFG#	UPC#
208031	1	6	3" MALE	3EUAM	095029115606
208032	1	6	4" MALE	4EUAM	095029115644
208036	1	6	3" FEMALE	3EUAF	095029115620
208037	1	6	4" FEMALE	4EUAF	095029115668

Adjustable Length Vent

Adjustable lengths telescope onto standard AmeriVent pipe sections.

STOCK#	PACK	CASE	DESCRIPTION	MFG#	UPC#
208001	1	6	3" X 12"	3E12A	095029410503
208002	1	6	4" X 12"	4E12A	095029410558



Adjustable 90° Elbow

The adjustable 90° elbow is constructed of four sections for smoother bends and less resistance. The elbow adjusts from 0° to 90° easily in order to clear rafters or ceiling joists.

STOCK#	PACK	CASE	DESCRIPTION	MFG#	UPC#
208011	1	6	3"	3EAL	095029411708
208012	1	6	4"	4EAL	095029411753



Adjustable 45° Elbow

The adjustable 45° elbow is constructed of four sections for smoother bends and less resistance. The elbow adjusts from 0° to 45° easily in order to clear rafters or ceiling joists.

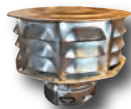
STOCK#	PACK	CASE	DESCRIPTION	MFG#	UPC#
208021	1	6	3"	3E45	095029412453
208022	1	6	4"	4E45	095029412507



Increaser

The increaser is used to increase vent size.

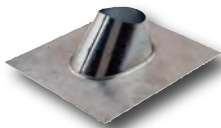
STOCK#	PACK	CASE	DESCRIPTION	MFG#	UPC#
208052	1	6	3" TO 4"	3EIX4	095029417755



Caps

The AmeriVent cap is the first engineered vent cap to gain recognition across the country for its performance. Millions of them are now installed on homes and business structures to protect against wind conditions that can cause waste gases to spill back into the structure through the appliance draft hood. The AmeriVent cap is UL-listed, and its patented design of ports and baffles keep rain and debris out of the vent. In addition, AmeriVent caps permit termination of vents at the minimum height necessary above the roof surface. The AmeriVent Cap is used as a ventilation cap as well as a Type B gas vent termination.

STOCK#	PACK	CASE	DESCRIPTION	MFG#	UPC#
208061	1	12	3" ROUND	3ECW	095029210912
208062	1	12	4" ROUND	4ECW	095029210936



Standard Flashing

The standard flashing fits flat to 5/12 pitch roof, and is made of double-seamed construction for protection from leakage. For a standard flashing with a 6" skirt,

STOCK#	PACK	CASE	DESCRIPTION	MFG#	UPC#
208071	1	12	3"	A3EF	095029302006
208072	1	12	4"	A4EF	095029302303



Storm Collar

The storm collar serves as a counter flashing. Use mastic to seal the vent pipe.

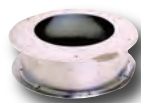
STOCK#	PACK	CASE	DESCRIPTION	MFG#	UPC#
208081	1	12	3"	A3ESC	095029330207
208082	1	12	4"	A4ESC	095029330252



Vent Collar

The vent collar provides a cover for a rough wall opening, and fits double wall pipe only.

STOCK#	PACK	CASE	DESCRIPTION	MFG#	UPC#
208091	1	12	3"	3EVC	095029327900
208092	1	12	4"	4EVC	095029327955



Wall Thimble

The wall thimble adjusts for various wall thicknesses from 4" to 6", and provides proper clearance for vent from combustibles.

STOCK#	PACK	CASE	DESCRIPTION	MFG#	UPC#
208101	1	6	3"	3EWT	095029333550
208102	1	6	4"	4EWT	095029333604

Double Wall Round and Oval Pipe Fittings



Draft Hood Connector

The draft hood connector connects Type B vent directly to an appliance draft hood. The flexible inlet can be shaped to fit oval draft hood outlets.

STOCK#	PACK	CASE	DESCRIPTION	MFG#	UPC#
208106	1	6	3"	3EDC	095029416857
208107	1	6	4"	4EDC	095029416901

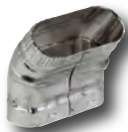


Firestop Support

The firestop support supports Type B gas vent starting at the appliance level and includes a support bracket. The support bracket (SB) and firestop (FS) are also available separately. Supports up to 20 feet.

STOCK#	PACK	CASE	DESCRIPTION	MFG#	UPC#
208363	1	12	3"	3FSP	095029312203
208364	1	6	4"	4FSP	095029312210

Double Wall Oval Vent Pipe Fittings



45° Elbows

The flat 45° elbow is used in pairs where offsets are desired in 1" minimum clearance enclosures or open spaces, such as attics or basements. Add pipe sections between pairs to produce additional offset.

STOCK#	PACK	CASE	DESCRIPTION	MFG#	UPC#
208212	1	6	4" OVAL STANDARD	4045S	095029422759
208222	1	6	4" OVAL FLAT	4045F	095029423350



Caps

STOCK#	PACK	CASE	DESCRIPTION	MFG#	UPC#
208262	1	12	4" OVAL	40C	095029322455



Standard Flashing

STOCK#	PACK	CASE	DESCRIPTION	MFG#	UPC#
208272	1	12	4" OVAL	40F	095029311909



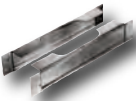
Storm Collar

STOCK#	PACK	CASE	DESCRIPTION	MFG#	UPC#
208282	1	12	4" OVAL	40SC	095029329003



Adapter

STOCK#	PACK	CASE	DESCRIPTION	MFG#	UPC#
208322	1	6	4" OVAL TO ROUND	40E	095029426856
208332	1	6	4" ROUND TO OVAL	4EO	095029427457



Hold Down Plate

STOCK#	PACK	CASE	DESCRIPTION	MFG#	UPC#
208342	1	24	4" OVAL	40HD	095029428553



Firestop Spacer

STOCK#	PACK	CASE	DESCRIPTION	MFG#	UPC#
208352	1	6	4" OVAL	40FS	095029428805



Plate Spacer

STOCK#	PACK	CASE	DESCRIPTION	MFG#	UPC#
208353	1	6	4" OVAL -2 PACK	40PS	095029428300

Type "B" Gas Venting and Fittings

Type "B" Gas Venting

The Type B designation is assigned to gas venting systems that meet the safety requirements of Underwriters Laboratories, Inc. The AmeriVent all-metal, double-wall gas vent is listed as Type B by Underwriters Laboratories, Inc. and is approved for such residential and commercial applications as Category 1 water heaters, boilers, furnaces, space heaters, or wall heaters. UL-approved Type B gas vent products form a continuous passageway from an approved gas appliance to the termination of the vent above the roof of the structure.

Round Vent Pipes

STOCK#	PACK	CASE	DESCRIPTION	MFG#	UPC#
209031	1	6	3" X 12"	3E12	095029400252
209032	1	6	3" X 18"	3E18	095029400207
209033	1	6	3" X 24"	3E24	095029400153
209034	1	6	3" X 36"	3E3	095029400108
209035	1	6	3" X 48"	3E4	095029109049
209036	1	6	3" X 60"	3E5	095029400009
209041	1	6	4" X 12"	4E12	095029401051
209042	1	6	4" X 18"	4E18	095029401006
209043	1	6	4" X 24"	4E24	095029400955
209044	1	6	4" X 36"	4E3	095029400900
209045	1	6	4" X 48"	4E4	095029400856
209046	1	6	4" X 60"	4E5	095029400801



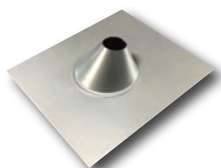
Oval Vent Pipes

STOCK#	PACK	CASE	DESCRIPTION	MFG#	UPC#
209241	1	6	4" X 12"	E4012	095029420205
209242	1	6	4" X 18"	E4018	095029420250
209243	1	6	4" X 24"	E4024	095029420304
209244	1	6	4" X 36"	E403	095029420007
209245	1	6	4" X 48"	E404	095029420052
209246	1	6	4" X 60"	E405	095029420106



Roof Flashing

STOCK#	PACK	CASE	DESCRIPTION	MFG#	UPC#
203575	1	25	1-1/2" REGULAR ROOF FLASHING 12" X 15" BASE	1/2PFR	054374217779
203576	1		2" REGULAR ROOF FLASHING 12" X 15" BASE	2 PFR	054374177790
203577	1		3" REGULAR ROOF FLASHING 15" X 18" BASE	3 PFR	054374777907



Duravent® Type "B" Round Gas Vent

Use for venting listed natural gas or liquid propane Category I, draft hood appliances, or appliances that have been specifically tested and listed to use Type B Gas Vent.

Vent Pipe

STOCK#	PACK	CASE	DESCRIPTION	MFG#	UPC#
203713▲	1	6	3" X 12" ROUND ADJUSTABLE LENGTH PIPE	3GV12A	662492000076
203738▲	1	6	3" X 12" ROUND VENT PIPE	3GV12	662492000069
203739▲	1	6	3" X 18" ROUND VENT PIPE	3GV18	662492000052
203737▲	1	6	3" X 24" ROUND VENT PIPE	3GV24	662492000045
203700▲	1	6	3" X 36" ROUND VENT PIPE	3GV36	662492000038
203710▲	1	6	3" X 48" ROUND VENT PIPE	3GV48	662492000021
203716▲	1	6	4" X 12" ROUND ADJUSTABLE LENGTH PIPE	4GV12A	662492000335
203744▲	1	6	4" X 12" ROUND VENT PIPE	4GV12	662492000328
203745▲	1	6	4" X 18" ROUND VENT PIPE	4GV18	662492000311
203746▲	1	6	4" X 24" ROUND VENT PIPE	4GV24	662492000304
203702▲	1	6	4" X 36" ROUND VENT PIPE	4GV36	662492000298



SECTION 6 • PAGE 39

Type "B" Gas Vent Fittings



90° Adjustable Elbow

STOCK#	PACK	CASE	DESCRIPTION	MFG#	UPC#
203712▲	1	18	3" ROUND	3GVL90	662492000090
203748▲	1	18	4" ROUND	4GVL90	662492000359



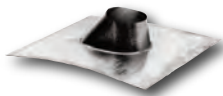
45° Adjustable Elbow

STOCK#	PACK	CASE	DESCRIPTION	MFG#	UPC#
203740▲	1		3" ROUND	3GVL45	662492000106
203718▲	1		4" ROUND	4GVL45	662492000366



Tee

STOCK#	PACK	CASE	DESCRIPTION	MFG#	UPC#
203701▲	1	6	3" ROUND	3GVT	662492000113
203703▲	1	6	4" ROUND	4GVT	662492000373



Adjustable Roof Flashing

STOCK#	PACK	CASE	DESCRIPTION	MFG#	UPC#
203711▲	1		3" ROUND	3GVF	662492000151
203747▲	1		4" ROUND	4GVF	662492000427
203725▲	1		5" ROUND	5GVF	662492000687



Tee Cap

STOCK#	PACK	CASE	DESCRIPTION	MFG#	UPC#
203714▲	1	6	3" ID ROUND	3GVTC	662492000120
203719▲	1	6	4" ID ROUND	4GVTC	662492000380



High Wind Vent Top

STOCK#	PACK	CASE	DESCRIPTION	MFG#	UPC#
203743▲	1	6	3" ROUND	3GVVTH	662492000144
203730▲	1	6	4" ROUND	4GVVTH	662492000410



Wall Thimble

STOCK#	PACK	CASE	DESCRIPTION	MFG#	UPC#
203715▲	1	6	3" ROUND	3GVWT	662492000212
203749▲	1		4" ROUND	4GVWT	662492000472



Firestop Spacer

STOCK#	PACK	CASE	DESCRIPTION	MFG#	UPC#
203717▲	1	6	4" ROUND	4GVFS	662492368114



Increaser

STOCK#	PACK	CASE	DESCRIPTION	MFG#	UPC#
203727▲	1	6	3" X 4" ROUND	3GVX4	662492526903



Pipe Collar

STOCK#	PACK	CASE	DESCRIPTION	MFG#	UPC#
203741▲	1	6	3" ROUND	3GVPC	662492000229
203728▲	1	6	4" ROUND	4GVPC	662492000489
203726▲	1	6	5" ROUND	5GVPC	662492000731

Type "B" Gas Vent Fittings



Storm Collar

STOCK#	PACK	CASE	DESCRIPTION	MFG#	UPC#
203724▲	1	12	3" ROUND	3GVSC	662492000168
203729▲	1	6	4" ROUND	4GVSC	662492000434
203736▲	1	6	5" ROUND	5GVSC	662492000694

Wall Strap

STOCK#	PACK	CASE	DESCRIPTION	MFG#	UPC#
203731▲	1	6	4" ROUND	4GGVWS	662492003350

Draft Hood Connector

STOCK#	PACK	CASE	DESCRIPTION	MFG#	UPC#
203742▲	1	6	3" HOOD TO ROUND PIPE	3GVC	662492000175

Duravent Type "B" Oval Gas Vent

Use for venting listed natural gas or liquid propane Category I, draft hood appliances, or appliances that have been specifically tested and listed to use Type B Gas Vent. Designed to be placed within 2" X 4" stud walls. Galvanized.



Vent Pipe

STOCK#	PACK	CASE	DESCRIPTION	MFG#	UPC#
203720▲	1	6	4" X 12" ADJUSTABLE LENGTH OVAL VENT PIPE	4GW12A	662492002643
203732▲	1	6	4" X 12" OVAL VENT PIPE	4GW12	662492002636
203733▲	1	4	4" X 18" OVAL VENT PIPE	4GW18	662492002629
203734▲	1	6	4" X 24" OVAL VENT PIPE	4GW24	662492002612
203704▲	1	6	4" X 36" OVAL VENT PIPE	4GW36	662492002605
203735▲	1	4	4" X 48" OVAL VENT PIPE	4GW48	662492002599

Base Plate

Use to attach oval vent to a wall furnace

STOCK#	PACK	CASE	DESCRIPTION	MFG#	UPC#
203705▲	1	6	4" OVAL BASE PLATE	MGD4GWBP	662492002780

Storm Collar

Use to maintain a weather tight resistant seal between the pipe and the flashing

STOCK#	PACK	CASE	DESCRIPTION	MFG#	UPC#
203706▲	1	6	4" OVAL STORM COLAR	4GWSC	662492002735

Pipe Vent Top

Required where pipe terminates above the roof line. Use for vertical installations only.

STOCK#	PACK	CASE	DESCRIPTION	MFG#	UPC#
203707▲	1	6	4" OVAL VENT TOP	4GWVT	662492002704

Elbows

STOCK#	PACK	CASE	DESCRIPTION	MFG#	UPC#
203708▲	1	6	4" ID 45° FLAT OVAL	4GWL45F	662492002667

Flashing

STOCK#	PACK	CASE	DESCRIPTION	MFG#	UPC#
203709▲	1	6	4" OVAL ADJ. FLASHING 0/12 TO 6/12 PITCH	4GWF	662492002711

Duravent Type "B" Oval Gas Venting



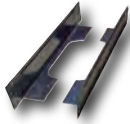
Adapter

STOCK#	PACK	CASE	DESCRIPTION	MFG#	UPC#
203721▲	1	6	4" OVAL TO ROUND	4GWAOR	662492002759



Plate Spacer

STOCK#	PACK	CASE	DESCRIPTION	MFG#	UPC#
203722	1	6	4" OVAL	4GWCS	662492002773



Firestop Spacer

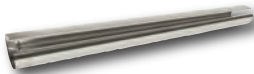
STOCK#	PACK	CASE	DESCRIPTION	MFG#	UPC#
203723	1	12	4" OVAL	4GWFS	662492002728

Vent Pipe and Fittings

Snap Lock KD Vent Pipe

Galvanized, 26 Gauge.

STOCK#	PACK	CASE	DESCRIPTION	MFG#	UPC#
203675▲	1		3" X 3'		054374183081
203653▲	1		4" X 3'		054374007714
203676▲	1		5" X 3'		054374830817
203654▲	1		6" X 3'		054374078424
203655▲	1		7" X 3'		054374784240
203677▲	1		8" X 3'		054374308170
203855▲	1		4" X 5'		054374233533
203856▲	1		5" X 5'		054374335336
203857▲	1		6" X 5'		054374353361
203858▲	1		7" X 5'		054374533619
203859▲	1		8" X 5'		054374533244



Adjustable 90° Elbow

Galvanized, 26 Gauge.

STOCK#	PACK	CASE	DESCRIPTION	MFG#	UPC#
203651▲	1		3"		054374424078
203652▲	1		4"		054374200771
203659▲	1		5"		054374952007
203660▲	1		6"		054374745814
203661▲	1		7"		054374458141
203671▲	1		8"		054374784318



Sure Fit Tapered Reducer

Galvanized, 26 Gauge.

STOCK#	PACK	CASE	DESCRIPTION	MFG#	UPC#
203680▲	1		4" X 3" TAPER		054374394760
203681▲	1		5" X 4" TAPER		054374947607
203656▲	1		6" X 4" TAPER		054374842407
203682▲	1		6" X 5" TAPER		054374476077
203657▲	1		7" X 6" TAPER		054374520077
203683▲	1		8" X 6" TAPER		054374760770
203684▲	1		8" X 7" TAPER		054374607709





Fan Boot

Galvanized, 26 Gauge.

STOCK#	PACK	CASE	DESCRIPTION	MFG#	UPC#
203662▲	1		3.25" X 10" X 6"		054374581412
203663▲	1		3.25" X 10" X 7"		054374814121



Tee Wye

Galvanized, 26 Gauge.

STOCK#	PACK	CASE	DESCRIPTION	MFG#	UPC#
203686▲	1		3" X 3" X 3" SEALED		054374784486
203664▲	1		4" X 4" X 4" SEALED		054374144839
203687▲	1		8" X 6" X 6" SEALED		054374844869
203688▲	1		8" X 8" X 6" SEALED		054374448692



Flue Reducers

Galvanized, 30 Gauge.

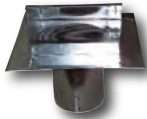
STOCK#	PACK	CASE	DESCRIPTION	MFG#	UPC#
203666▲	1		4" X 3"		054374483952
203667▲	1		5" X 4"		054374839520
203668▲	1		6" X 3"		054374240784
203669▲	1		6" X 4"		054374407842
203670▲	1		7" X 6"		054374078431
203665▲	1		8" X 6"		054374448395



Concrete Box

Galvanized, 26 Gauge.

STOCK#	PACK	CASE	DESCRIPTION	MFG#	UPC#
203672▲	1		10" X 4" X 6" X 18" HIGH		054374843183
203673▲	1		12" X 4" X 6" X 18" HIGH		054374431830
203674▲	1		14" X 4" X 6" X 18" HIGH		054374318308



Air Duct Reducer

Galvanized, 26 Gauge.

STOCK#	PACK	CASE	DESCRIPTION	MFG#	UPC#
203678▲	1		10" X 4" X 6" WITH 6" EXTENSION		054374083947
203679▲	1		14" X 4" X 6" WITH 6" EXTENSION		054374839476



True Tee

Galvanized, 26 Gauge.

STOCK#	PACK	CASE	DESCRIPTION	MFG#	UPC#
203650▲	1		4" X 4" X 4"	5151	054374274581
203685▲	1		6" X 6" X 6" SEALED		054374078448



Universal Wall Cap

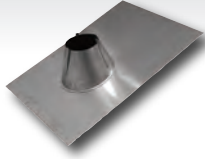
Galvanized, 26 Gauge.

STOCK#	PACK	CASE	DESCRIPTION	MFG#	UPC#
203658▲	1		4"		054374395200
203689▲	1		5"		054374486922
203690▲	1		6"		054374869220
203691▲	1		7"		054374692200

Vent Fittings and Access Doors

Code Cap Base

Aluminum, for use on shake roofs to meet code requirements.



STOCK#	PACK	CASE	DESCRIPTION	UPC#
203850▲	1	3"		054374922000
203851▲	1	4"		054374220007
203852▲	1	5"		054374011148
203853▲	1	6"		054374111503

Code Cap Top

Aluminum, for use on shake roofs to meet code requirements.



STOCK#	PACK	CASE	DESCRIPTION	UPC#
203860▲	1	3"		054374200078
203861▲	1	4"		054374000906
203862▲	1	5"		054374115495
203863▲	1	6"		054374155217

Access Doors

PROFLO® Stainless Steel

Concealed rod hinge. Not fire rated. Screwdriver operated latch. Constructed of 16 gauge steel.



STOCK#	PACK	CASE	DESCRIPTION	UPC#
392251▲	1	8" X 8"	PF88SSAD	781889051856
392252▲	1	10" X 10"	PF1010SSAD	781889051863
392253▲	1	12" X 12"	PF1212SSAD	781889051870

Plastic

Includes pull back tabs and locator holes for easy installation. Includes 1-1/2" frame around door.

Removable door. Door and frame can be painted or wallpapered. Plastic construction.



STOCK#	PACK	CASE	DESCRIPTION	UPC#
392259▲	1	8" X 8" WHITE	PF910708	781889021897
392260▲	1	10" X 14" WHITE	PF91071014	781889005019
392262▲	1	6" X 9" WHITE	PF910710	781889005002

Metal

Concealed rod hinge. Not fire rated. Screwdriver operated latch. Constructed of 16 gauge steel.



STOCK#	PACK	CASE	DESCRIPTION	UPC#	
392261▲	1	20	8" X 8" WHITE	PF88AD	781889051788
392269▲	1		10" X 10" WHITE	PF1010AD	781889051795
392263▲	1	10	12" X 12" WHITE	PF1212AD	781889051801
392264▲	1		14" X 14" WHITE	PF1414AD	781889051818
392266▲	1		16" X 16" WHITE	PF1616AD	781889051825
392267▲	1		18" X 18" WHITE	PF1818AD	781889051832
392268▲	1		24" X 24" WHITE	PF2424AD	781889051849

Oatey®

Easily installs between wall studs or ceiling joists. Flush- or surface-mounted frame. Used to allow access to plumbing, electrical wiring or other utility applications behind walls or ceilings. Constructed of high-impact ABS, paint or wallpaper to match décor. Door requires a screwdriver to open for child safety.



STOCK#	PACK	CASE	DESCRIPTION	UPC#
392265	1	6	14" X 29" WHITE PLASTIC	34044 038753340449

Access Doors, Crawl Vents, Cable Ties and Insulation Products



Cendrex®

Flexisnap-Flush Universal Access Door

A magnetic access door with powerful magnets that hold the sturdy metal panel in place. The adjustable frame adapts to different openings. Made of cold rolled steel. Door incorporates magnets to hold it in place.

STOCK#	PACK	CASE	DESCRIPTION	UPC#
392272	1	4	10-1/2" X 12" WHITE	FLE-10.5X12-W 764728451390
392273	1	4	14" X 15-1/2" WHITE	FLE-14X15.5-W 764728451055

Crawl Hole Vents



Crawl Hole Vents

STOCK#	PACK	CASE	DESCRIPTION	UPC#
204310	1		18" X 24"	CHV 735623502111
204311	1		18" X 24" DOOR ONLY	CHVDO 735623502210

Cable Ties

Cable Ties

Proselect™

High tensile strength. Made of type 6/6 Nylon. UL181B approved on 36" and 48" ties. 7-1/2" to 36" ties are UV rated under Standard 62275.



STOCK#	PACK	CASE	DESCRIPTION	MFG#	UPC#
305001	100		7-1/2" BLACK-100PK	PSCTBV	781889100868
305002	1000		7-1/2" BLACK-1000PK	PSCTBV1000	781889224205
305003	100		11" BLACK-100PK	PSCTB11	781889100813
305004	100		14" BLACK-100PK	PSCTB14	781889100820
305005	50		24" BLACK-50PK	PSCTB24	781889100837
305006	50		36" BLACK-50PK	PSCTB36	781881008445
305007	50		48" BLACK-50PK	PSCTB48	781889196373

Insulation Products



Frost King®

Water Heater Insulation Blankets

Vinyl Backed Fiberglass Insulation Blankets are designed for gas, oil or electric water heaters up to 60 gallon size. Package contains a roll of plastic tape.

STOCK#	PACK	CASE	DESCRIPTION	UPC#
010525	1	4	2" THICK X 48" X 75"	SP57/67 077578023816
010528	1	4	3" THICK X 48" X 75"	SP57/11C 077578023946
010530	1	4	3" THICK X 60" X 90" FITS UP TO 80 GALLON	SP60 077578051970



Faucet Protectors/Covers

Protects outdoor faucets/bibbs from freezing from freezing wind and chill.

STOCK#	PACK	CASE	DESCRIPTION	MFG#	UPC#
319020	1	24	FOAM	FC1	077578018157
319021	1	16	HARD PLASTIC	FC2	077578018140
319022	1	60	SOCK FAUCET COVER	FC3-12	077578058108

Heat tapes

Keep your pipes from freezing in the winter. With a built-in thermostat, the Frost King Electric Heat Cable Kit automatically keep your water pipes from freezing, works at temperatures down to 38 degrees below zero.

STOCK#	PACK	CASE	DESCRIPTION	MFG#	UPC#
319025	1	5	6' 120 VOLT, 7 WATTS PER FOOT	HC6A	077578015675
319026	1	5	12' 120 VOLT, 7 WATTS PER FOOT	HC12A	077578015668
319027	1	5	18' 120 VOLT, 7 WATTS PER FOOT	HC18A	077578015699
319028	1	5	24' 120 VOLT, 7 WATTS PER FOOT	HC24A	077578015705
319029	1	5	30' 120 VOLT, 7 WATTS PER FOOT	HC30A	077578015737



Foam and Foil Pipe Insulation

Foam and Foil Pipe Insulation helps stop wasteful heat loss, on cold pipes it can stop sweaty pipes which can cause mold. Also great for dampening sounds and vibrations throughout the house.

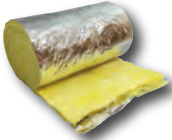
STOCK#	PACK	CASE	DESCRIPTION	MFG#	UPC#
248385	1	12	2" X 1/8" X 15'	FV15H	077578023175



Fiberglass Pipe Wrap

Insulate pipes in exposed areas, and it prevents pipes from sweating Spiral Duct Wrap.

STOCK#	PACK	CASE	DESCRIPTION	MFG#	UPC#
248381	1	24	3" X 1/2" X 25'	SP41X	077578014999
248382	1	12	3" X 1/2" X 50'	SP50	077578023045
248380	1	12	2" X 12" X 15'	SP55	077578022956



Reflectix® Double Reflective Insulation

The Reflectix® Double Reflective Insulation is the most versatile, widely distributed, energy-efficient product that we manufacture. The characteristics that make it so attractive include ease-of-handling and installation, more than 40+ commercial and residential construction applications, and a large selection of product configurations to accommodate the vast majority of applications / buildings. Distribution of our Double Reflective Insulation is worldwide through Do-It-Yourself Retailers, Contractor Sales Groups and Industrial / Commercial Building Products Suppliers.

Standard Edge

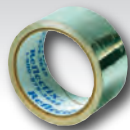
STOCK#	PACK	CASE	DESCRIPTION	MFG#	UPC#
248121	1	8	2' X 25' ROLL	BP24025	716511320017
248124	1	9	4' X 50' ROLL	BP48050	716511340022
248126	1	9	4' X 10' ROLL	BP48010	716511340008
248128	1	4	4' X 25' ROLL	BP48025	716511340015



Staple Tabs Edge

STOCK#	PACK	CASE	DESCRIPTION	MFG#	UPC#
248132	1	12	16" X 25' ROLL STAPLE TABS	ST16025	716511516014
248134	1	8	24" X 25' ROLL STAPLE TABS	ST24025	716511520011





Foil Seam Tape

STOCK#	PACK	CASE	DESCRIPTION	MFG#	UPC#
248138	6	864	2" X150' ROLL	FT25006	716511102507
248140	6	24	2" X 30' ROLL	FT21006	716511102101



Spiral Pipe Wrap

STOCK#	PACK	CASE	DESCRIPTION	MFG#	UPC#
248154	1	6	2" X 25' ROLL	SPW0202506	716511216259
248151	1	8	6" X 25' ROLL	SPW0602508	716511216273



Duct Wrap

Combines the properties of two popular insulating materials in one handy roll. It can be used on both heating and air-conditioning ducts, as well as on car and truck hoods and trunks.

STOCK#	PACK	CASE	DESCRIPTION	MFG#	UPC#
248156	4	64	12" X 25' ROLL	DW1202504	716511201255

Nomaco[®] Econotherm[®] Pipe Insulation



STOCK#	PACK	CASE	DESCRIPTION	MFG#	UPC#
248220	1	50	6' X 1/2" COPPER X 3/8" IRON PIPE X 1/2" WALL	58C	054374814039
248225	1	40	6' X 3/4" COPPER X 1/2" IRON PIPE X 1/2" WALL	78C	054374140411
248230	1	31	6' X 1" COPPER X 3/4" IRON PIPE X 1/2" WALL	118C	054374404117
248260	1	30	6' X 1/2" COPPER X 3/8" IRON PIPE X 3/4" WALL	58D	054374061549
248262	1	25	6' X 3/4" COPPER X 1/2" IRON PIPE X 3/4" WALL	78D	054374615490
248264	1	20	6' X 1" COPPER X 3/4" IRON PIPE X 3/4" WALL	118D	054374155125



248280	1	50	6' X 1/2" COPPER X 1/2" WALL	58CT	054374551255
248281	1	40	6' X 3/4" COPPER X 1/2" WALL	78CT	054374512553
248266	1	16	6' X 1-1/4" COPPER X 3/4" WALL	138D	054374176427
248268	1	14	6' X 1-1/2" COPPER X 3/4" WALL	158D	054374764273
248270	1	9	6' X 2" COPPER X 3/4" WALL	218D	054374642731



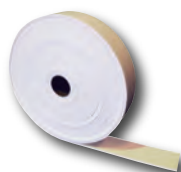
Nomaco[®] Imcolock[®] Pipe Insulation – Seam Seal

STOCK#	PACK	CASE	DESCRIPTION	MFG#	UPC#
248287	1	30	6' X 5/8" ID X 3/4" WALL	58DT	054374012305
248291	1	25	6' X 7/8" ID X 3/4" WALL	78DT	054374123353



Flex Wrap Foam Pipe Wrap

STOCK#	PACK	CASE	DESCRIPTION	MFG#	UPC#
248340	1	6	3/32" THICK X 6" X 200' ROLL	11	054374101955



Carrhill Handi-Cap Wrap

Used to wrap P-traps and supplies in public restrooms. Self adhesive.

STOCK#	PACK	CASE	DESCRIPTION	MFG#	UPC#
248345	1	24	1/8" THICK X 2" WIDE X 40' ROLL - WHITE	120WHT	801849001209

Proposition 65 Warnings

Below is a listing of all items that come with a Proposition 65 Warning. All eligible items are in numerical order.

STOCK#	WARNING	CHEMICAL
010595	<I> WARNING: Cancer and Reproductive Harm - www.p65warnings.ca.gov	DEHP
102600	<I> WARNING: Cancer and Reproductive Harm - www.p65warnings.ca.gov	LEAD AND LEAD COMPOUNDS; NICKEL (METALLIC)
102603	<I> WARNING: Cancer and Reproductive Harm - www.p65warnings.ca.gov	
107608	<I> WARNING: Cancer and Reproductive Harm - www.p65warnings.ca.gov	LEAD AND LEAD COMPOUNDS; NICKEL (METALLIC)
107619	<I> WARNING: Cancer and Reproductive Harm - www.p65warnings.ca.gov	LEAD AND LEAD COMPOUNDS
107624	<I> WARNING: Cancer and Reproductive Harm - www.p65warnings.ca.gov	LEAD AND LEAD COMPOUNDS
107632	<I> WARNING: Cancer and Reproductive Harm - www.p65warnings.ca.gov	
107633	<I> WARNING: Cancer and Reproductive Harm - www.p65warnings.ca.gov	LEAD
107634	<I> WARNING: Cancer and Reproductive Harm - www.p65warnings.ca.gov	
109313	<I> WARNING: Cancer and Reproductive Harm - www.p65warnings.ca.gov	LEAD AND LEAD COMPOUNDS; NICKEL (METALLIC)
109314	<I> WARNING: Cancer and Reproductive Harm - www.p65warnings.ca.gov	LEAD AND LEAD COMPOUNDS; NICKEL (METALLIC)
109315	<I> WARNING: Cancer and Reproductive Harm - www.p65warnings.ca.gov	CARBON BLACK; CHROMIUM (HEXAVALENT COMPOUNDS); LEAD AND LEAD COMPOUNDS
109316	<I> WARNING: Cancer and Reproductive Harm - www.p65warnings.ca.gov	CARBON BLACK; CHROMIUM (HEXAVALENT COMPOUNDS); LEAD AND LEAD COMPOUNDS
109318	<I> WARNING: Cancer and Reproductive Harm - www.p65warnings.ca.gov	LEAD
109319	<I> WARNING: Cancer and Reproductive Harm - www.p65warnings.ca.gov	LEAD
109500	<I> WARNING: Cancer and Reproductive Harm - www.p65warnings.ca.gov	LEAD AND LEAD COMPOUNDS
109501	<I> WARNING: Cancer and Reproductive Harm - www.p65warnings.ca.gov	LEAD AND LEAD COMPOUNDS
109502	<I> WARNING: Cancer - www.p65warnings.ca.gov	
109503	<I> WARNING: Cancer - www.p65warnings.ca.gov	
109504	<I> WARNING: Cancer and Reproductive Harm - www.p65warnings.ca.gov	LEAD AND LEAD COMPOUNDS

SECTION 6 • PAGE 48

Proposition 65 Warnings

Below is a listing of all items that come with a Proposition 65 Warning. All eligible items are in numerical order.

STOCK#	WARNING	CHEMICAL	
109505	<!> WARNING: Cancer and Reproductive Harm - www.p65warnings.ca.gov	LEAD AND LEAD COMPOUNDS	
109506	<!> WARNING: Cancer and Reproductive Harm - www.p65warnings.ca.gov	LEAD AND LEAD COMPOUNDS	
109507	<!> WARNING: Cancer and Reproductive Harm - www.p65warnings.ca.gov	LEAD AND LEAD COMPOUNDS; NICKEL (METALLIC)	
109508	<!> WARNING: Cancer and Reproductive Harm - www.p65warnings.ca.gov	LEAD AND LEAD COMPOUNDS; NICKEL (METALLIC)	
109509	<!> WARNING: Cancer and Reproductive Harm - www.p65warnings.ca.gov	LEAD	
109510	<!> WARNING: Cancer and Reproductive Harm - www.p65warnings.ca.gov	LEAD AND LEAD COMPOUNDS	
109511	<!> WARNING: Cancer and Reproductive Harm - www.p65warnings.ca.gov	LEAD AND LEAD COMPOUNDS	
109512	<!> WARNING: Cancer and Reproductive Harm - www.p65warnings.ca.gov	LEAD	
109513	<!> WARNING: Cancer and Reproductive Harm - www.p65warnings.ca.gov	LEAD	
109514	<!> WARNING: Cancer and Reproductive Harm - www.p65warnings.ca.gov	LEAD	
109515	<!> WARNING: Cancer and Reproductive Harm - www.p65warnings.ca.gov	LEAD	
109516	<!> WARNING: Cancer and Reproductive Harm - www.p65warnings.ca.gov	LEAD	
STOCK#	WARNING	CHEMICAL	CAS1
109519	<!> WARNING: Cancer - www.p65warnings.ca.gov	NICKEL	7440-02-0
109662	<!> WARNING: Cancer and Reproductive Harm - www.p65warnings.ca.gov	LEAD AND LEAD COMPOUNDS	
109720	<!> WARNING: Cancer and Reproductive Harm - www.p65warnings.ca.gov		
109721	<!> WARNING: Cancer and Reproductive Harm - www.p65warnings.ca.gov	LEAD AND LEAD COMPOUNDS; NICKEL (METALLIC); CARBON BLACK	
109722	<!> WARNING: Cancer and Reproductive Harm - www.p65warnings.ca.gov		
109726	<!> WARNING: Cancer and Reproductive Harm - www.p65warnings.ca.gov	LEAD	
109762	<!> WARNING: Cancer and Reproductive Harm - www.p65warnings.ca.gov	LEAD AND LEAD COMPOUNDS	
109763	<!> WARNING: Cancer and Reproductive Harm - www.p65warnings.ca.gov	LEAD AND LEAD COMPOUNDS	
109766	<!> WARNING: Cancer and Reproductive Harm - www.p65warnings.ca.gov	LEAD AND LEAD COMPOUNDS	
109767	<!> WARNING: Cancer and Reproductive Harm - www.p65warnings.ca.gov	LEAD AND LEAD COMPOUNDS	

SECTION 6 • PAGE 49



▲ For Proposition 65 warnings please refer to pages 48-59 at the end of this section.

Proposition 65 Warnings

Below is a listing of all items that come with a Proposition 65 Warning. All eligible items are in numerical order.

SECTION 6 • PAGE 50

STOCK#	WARNING	CHEMICAL	
109780	<I> WARNING: Cancer and Reproductive Harm - www.p65warnings.ca.gov		
109785	<I> WARNING: Cancer and Reproductive Harm - www.p65warnings.ca.gov	LEAD AND LEAD COMPOUNDS; NICKEL (METALLIC)	
109790	<I> WARNING: Cancer and Reproductive Harm - www.p65warnings.ca.gov	DI (2-ETHYLHEXYL) PHTHALATE (DEHP)	
109793	<I> WARNING: Cancer and Reproductive Harm - www.p65warnings.ca.gov	DI (2-ETHYLHEXYL) PHTHALATE (DEHP)	
109844	<I> WARNING: Cancer and Reproductive Harm - www.p65warnings.ca.gov		
109845	<I> WARNING: Cancer and Reproductive Harm - www.p65warnings.ca.gov		
109846	<I> WARNING: Cancer and Reproductive Harm - www.p65warnings.ca.gov		
109852	<I> WARNING: Cancer and Reproductive Harm - www.p65warnings.ca.gov	LEAD	
109871	<I> WARNING: Cancer and Reproductive Harm - www.p65warnings.ca.gov	1 3-BUTADIENE; LEAD AND LEAD COMPOUNDS	
109877	<I> WARNING: Cancer and Reproductive Harm - www.p65warnings.ca.gov	LEAD AND LEAD COMPOUNDS	
116082	<I> WARNING: Cancer and Reproductive Harm - www.p65warnings.ca.gov	DI (2-ETHYLHEXYL) PHTHALATE (DEHP); NICKEL (METALLIC)	
119657	<I> WARNING: Cancer and Reproductive Harm - www.p65warnings.ca.gov	LEAD AND LEAD COMPOUNDS	
119658	<I> WARNING: Cancer and Reproductive Harm - www.p65warnings.ca.gov	LEAD AND LEAD COMPOUNDS	
119659	<I> WARNING: Cancer and Reproductive Harm - www.p65warnings.ca.gov	LEAD AND LEAD COMPOUNDS	
STOCK#	WARNING	CHEMICAL	CAS1
119700	<I> WARNING: Cancer and Reproductive Harm - www.p65warnings.ca.gov	DI (2-ETHYLHEXYL) PHTHALATE; SILICA CRYSTALLINE	117-81-7
119701	<I> WARNING: Cancer and Reproductive Harm - www.p65warnings.ca.gov	DI (2-ETHYLHEXYL) PHTHALATE; SILICA CRYSTALLINE	117-81-7
119703	<I> WARNING: Cancer and Reproductive Harm - www.p65warnings.ca.gov	DI (2-ETHYLHEXYL) PHTHALATE; SILICA CRYSTALLINE	117-81-7
119704	<I> WARNING: Cancer and Reproductive Harm - www.p65warnings.ca.gov	DI (2-ETHYLHEXYL) PHTHALATE; SILICA CRYSTALLINE	117-81-7



▲ For **Proposition 65** warnings please refer to pages 48-59 at the end of this section.

Proposition 65 Warnings

Below is a listing of all items that come with a Proposition 65 Warning. All eligible items are in numerical order.

STOCK#	WARNING	CHEMICAL
119807	<I> WARNING: Cancer and Reproductive Harm - www.p65warnings.ca.gov	CARBON BLACK; 1 3-BUTADIENE; CHROMIUM (HEXAVALENT COMPOUNDS); DI (2-ETHYLHEXYL) PHTHALATE (DEHP); DIISONONYL PHTHALATE (DINP); STYRENE
119808	<I> WARNING: Cancer and Reproductive Harm - www.p65warnings.ca.gov	CARBON BLACK; 1 3-BUTADIENE; CHROMIUM (HEXAVALENT COMPOUNDS); DI (2-ETHYLHEXYL) PHTHALATE (DEHP); DIISONONYL PHTHALATE (DINP); STYRENE
119809	<I> WARNING: Cancer and Reproductive Harm - www.p65warnings.ca.gov	CARBON BLACK; 1 3-BUTADIENE; CHROMIUM (HEXAVALENT COMPOUNDS); DI (2-ETHYLHEXYL) PHTHALATE (DEHP); DIISONONYL PHTHALATE (DINP); STYRENE
119810	<I> WARNING: Cancer. www.P65Warnings.ca.gov	CARBON BLACK
119840	<I> WARNING: Cancer and Reproductive Harm - www.p65warnings.ca.gov	CARBON BLACK; DIISONONYL PHTHALATE (DINP); LEAD AND LEAD COMPOUNDS; NICKEL (METALLIC)
119850	<I> WARNING: Cancer and Reproductive Harm - www.p65warnings.ca.gov	LEAD AND LEAD COMPOUNDS; NICKEL (METALLIC); CARBON BLACK
122617	<I> WARNING: Cancer and Reproductive Harm - www.p65warnings.ca.gov	CHROMIUM (HEXAVALENT COMPOUNDS); LEAD AND LEAD COMPOUNDS; NICKEL (METALLIC)
122618	<I> WARNING: Cancer and Reproductive Harm - www.p65warnings.ca.gov	CHROMIUM (HEXAVALENT COMPOUNDS); LEAD AND LEAD COMPOUNDS
122629	<I> WARNING: Cancer and Reproductive Harm - www.p65warnings.ca.gov	CHROMIUM (HEXAVALENT COMPOUNDS); LEAD AND LEAD COMPOUNDS; NICKEL (METALLIC)



▲ For **Proposition 65** warnings please refer to pages 48-59 at the end of this section.

Proposition 65 Warnings

Below is a listing of all items that come with a Proposition 65 Warning. All eligible items are in numerical order.

STOCK#	WARNING	CHEMICAL
123919	<I> WARNING: Cancer and Reproductive Harm - www.p65warnings.ca.gov	LEAD AND LEAD COMPOUNDS
127430	<I> WARNING: Cancer and Reproductive Harm - www.p65warnings.ca.gov	LEAD AND LEAD COMPOUNDS
127521	<I> WARNING: Cancer and Reproductive Harm - www.p65warnings.ca.gov	LEAD
127526	<I> WARNING: Cancer - www.p65warnings.ca.gov	
127528	<I> WARNING: Cancer - www.p65warnings.ca.gov	
127530	<I> WARNING: Cancer and Reproductive Harm - www.p65warnings.ca.gov	LEAD AND LEAD COMPOUNDS
127531	<I> WARNING: Cancer and Reproductive Harm - www.p65warnings.ca.gov	LEAD AND LEAD COMPOUNDS
127532	<I> WARNING: Cancer and Reproductive Harm - www.p65warnings.ca.gov	LEAD AND LEAD COMPOUNDS
127533	<I> WARNING: Cancer and Reproductive Harm - www.p65warnings.ca.gov	LEAD AND LEAD COMPOUNDS
127540	<I> WARNING: Cancer - www.p65warnings.ca.gov	
127541	<I> WARNING: Cancer - www.p65warnings.ca.gov	
127542	<I> WARNING: Cancer - www.p65warnings.ca.gov	
127543	<I> WARNING: Cancer - www.p65warnings.ca.gov	
127544	<I> WARNING: Cancer - www.p65warnings.ca.gov	
127600	<I> WARNING: Cancer - www.p65warnings.ca.gov	
127603	<I> WARNING: Cancer - www.p65warnings.ca.gov	
127607	<I> WARNING: Cancer and Reproductive Harm - www.p65warnings.ca.gov	
127611	<I> WARNING: Cancer - www.p65warnings.ca.gov	
127612	<I> WARNING: Cancer - www.p65warnings.ca.gov	
129319	<I> WARNING: Cancer and Reproductive Harm - www.p65warnings.ca.gov	
142605	<I> WARNING: Cancer and Reproductive Harm - www.p65warnings.ca.gov	LEAD AND LEAD COMPOUNDS; NICKEL (METALLIC)
190510	<I> WARNING: Cancer and Reproductive Harm - www.p65warnings.ca.gov	LEAD AND LEAD COMPOUNDS
200016	<I> WARNING: Cancer and Reproductive Harm - www.p65warnings.ca.gov	LEAD
200017	<I> WARNING: Cancer and Reproductive Harm - www.p65warnings.ca.gov	LEAD
200018	<I> WARNING: Cancer and Reproductive Harm - www.p65warnings.ca.gov	LEAD
203138	<I> WARNING: Cancer and Reproductive Harm - www.p65warnings.ca.gov	

Proposition 65 Warnings

Below is a listing of all items that come with a Proposition 65 Warning. All eligible items are in numerical order.

STOCK#	WARNING	CHEMICAL	
STOCK#	WARNING	CHEMICAL	CAS1
203139	<!> WARNING: Cancer and Reproductive Harm - www.p65warnings.ca.gov		
203304	<!> WARNING: Cancer and Reproductive Harm - www.p65warnings.ca.gov	LEAD	7439-92-1
203650	<!> WARNING: Cancer and Reproductive Harm - www.p65warnings.ca.gov		Chromium
203651	<!> WARNING: Cancer and Reproductive Harm - www.p65warnings.ca.gov		Chromium
203652	<!> WARNING: Cancer and Reproductive Harm - www.p65warnings.ca.gov		Chromium
203653	<!> WARNING: Cancer and Reproductive Harm - www.p65warnings.ca.gov		Chromium
203654	<!> WARNING: Cancer and Reproductive Harm - www.p65warnings.ca.gov		Chromium
203655	<!> WARNING: Cancer and Reproductive Harm - www.p65warnings.ca.gov		Chromium
203656	<!> WARNING: Cancer and Reproductive Harm - www.p65warnings.ca.gov		Chromium
203657	<!> WARNING: Cancer and Reproductive Harm - www.p65warnings.ca.gov		Chromium
203658	<!> WARNING: Cancer and Reproductive Harm - www.p65warnings.ca.gov		Chromium
203659	<!> WARNING: Cancer and Reproductive Harm - www.p65warnings.ca.gov		Chromium
203660	<!> WARNING: Cancer and Reproductive Harm - www.p65warnings.ca.gov		Chromium
203661	<!> WARNING: Cancer and Reproductive Harm - www.p65warnings.ca.gov		Chromium
203662	<!> WARNING: Cancer and Reproductive Harm - www.p65warnings.ca.gov		Chromium
203663	<!> WARNING: Cancer and Reproductive Harm - www.p65warnings.ca.gov		Chromium
203665	<!> WARNING: Cancer and Reproductive Harm - www.p65warnings.ca.gov		Chromium
203666	<!> WARNING: Cancer and Reproductive Harm - www.p65warnings.ca.gov		Chromium
203667	<!> WARNING: Cancer and Reproductive Harm - www.p65warnings.ca.gov		Chromium
203668	<!> WARNING: Cancer and Reproductive Harm - www.p65warnings.ca.gov		Chromium
203669	<!> WARNING: Cancer and Reproductive Harm - www.p65warnings.ca.gov		Chromium
203670	<!> WARNING: Cancer and Reproductive Harm - www.p65warnings.ca.gov		Chromium
203671	<!> WARNING: Cancer and Reproductive Harm - www.p65warnings.ca.gov		Chromium
203672	<!> WARNING: Cancer and Reproductive Harm - www.p65warnings.ca.gov		Chromium
203673	<!> WARNING: Cancer and Reproductive Harm - www.p65warnings.ca.gov		Chromium
203674	<!> WARNING: Cancer and Reproductive Harm - www.p65warnings.ca.gov		Chromium
203675	<!> WARNING: Cancer and Reproductive Harm - www.p65warnings.ca.gov		Chromium
203676	<!> WARNING: Cancer and Reproductive Harm - www.p65warnings.ca.gov		Chromium
203677	<!> WARNING: Cancer and Reproductive Harm - www.p65warnings.ca.gov		Chromium
203678	<!> WARNING: Cancer and Reproductive Harm - www.p65warnings.ca.gov		Chromium



▲ For **Proposition 65** warnings please refer to pages 48-59 at the end of this section.

Proposition 65 Warnings

Below is a listing of all items that come with a Proposition 65 Warning. All eligible items are in numerical order.

SECTION 6 • PAGE 54

STOCK#	WARNING	CHEMICAL
203679	<I> WARNING: Cancer and Reproductive Harm - www.p65warnings.ca.gov	Chromium
203680	<I> WARNING: Cancer and Reproductive Harm - www.p65warnings.ca.gov	Chromium
203681	<I> WARNING: Cancer and Reproductive Harm - www.p65warnings.ca.gov	Chromium
203682	<I> WARNING: Cancer and Reproductive Harm - www.p65warnings.ca.gov	Chromium
203683	<I> WARNING: Cancer and Reproductive Harm - www.p65warnings.ca.gov	Chromium
203684	<I> WARNING: Cancer and Reproductive Harm - www.p65warnings.ca.gov	Chromium
203685	<I> WARNING: Cancer and Reproductive Harm - www.p65warnings.ca.gov	Chromium
203686	<I> WARNING: Cancer and Reproductive Harm - www.p65warnings.ca.gov	Chromium
203687	<I> WARNING: Cancer and Reproductive Harm - www.p65warnings.ca.gov	Chromium
203688	<I> WARNING: Cancer and Reproductive Harm - www.p65warnings.ca.gov	Chromium
203689	<I> WARNING: Cancer and Reproductive Harm - www.p65warnings.ca.gov	Chromium
203690	<I> WARNING: Cancer and Reproductive Harm - www.p65warnings.ca.gov	Chromium
203691	<I> WARNING: Cancer and Reproductive Harm - www.p65warnings.ca.gov	Chromium
203692	<I> WARNING: Cancer and Reproductive Harm - www.p65warnings.ca.gov	CHROMIUM
203696	<I> WARNING: Cancer and Reproductive Harm - www.p65warnings.ca.gov	CHROMIUM
203700	<I> WARNING: Cancer and Reproductive Harm - www.p65warnings.ca.gov	
203701	<I> WARNING: Cancer and Reproductive Harm - www.p65warnings.ca.gov	
203702	<I> WARNING: Cancer and Reproductive Harm - www.p65warnings.ca.gov	
203703	<I> WARNING: Cancer and Reproductive Harm - www.p65warnings.ca.gov	
203705	<I> WARNING: Cancer and Reproductive Harm - www.p65warnings.ca.gov	
203706	<I> WARNING: Cancer and Reproductive Harm - www.p65warnings.ca.gov	
203707	<I> WARNING: Cancer and Reproductive Harm - www.p65warnings.ca.gov	
203708	<I> WARNING: Cancer and Reproductive Harm - www.p65warnings.ca.gov	
203709	<I> WARNING: Cancer and Reproductive Harm - www.p65warnings.ca.gov	
203710	<I> WARNING: Cancer and Reproductive Harm - www.p65warnings.ca.gov	
203712	<I> WARNING: Cancer and Reproductive Harm - www.p65warnings.ca.gov	
203713	<I> WARNING: Cancer and Reproductive Harm - www.p65warnings.ca.gov	
203714	<I> WARNING: Cancer and Reproductive Harm - www.p65warnings.ca.gov	
203715	<I> WARNING: Cancer and Reproductive Harm - www.p65warnings.ca.gov	
203716	<I> WARNING: Cancer and Reproductive Harm - www.p65warnings.ca.gov	
203718	<I> WARNING: Cancer and Reproductive Harm - www.p65warnings.ca.gov	



▲ For **Proposition 65** warnings please refer to pages 48-59 at the end of this section.

Proposition 65 Warnings

Below is a listing of all items that come with a Proposition 65 Warning. All eligible items are in numerical order.

STOCK#	WARNING	CHEMICAL
203719	<!> WARNING: Cancer and Reproductive Harm - www.p65warnings.ca.gov	
203721	<!> WARNING: Cancer and Reproductive Harm - www.p65warnings.ca.gov	
203724	<!> WARNING: Cancer and Reproductive Harm - www.p65warnings.ca.gov	
203725	<!> WARNING: Cancer and Reproductive Harm - www.p65warnings.ca.gov	
203726	<!> WARNING: Cancer and Reproductive Harm - www.p65warnings.ca.gov	
203727	<!> WARNING: Cancer and Reproductive Harm - www.p65warnings.ca.gov	
203728	<!> WARNING: Cancer and Reproductive Harm - www.p65warnings.ca.gov	
203729	<!> WARNING: Cancer and Reproductive Harm - www.p65warnings.ca.gov	
203730	<!> WARNING: Cancer and Reproductive Harm - www.p65warnings.ca.gov	
203731	<!> WARNING: Cancer and Reproductive Harm - www.p65warnings.ca.gov	
203735	<!> WARNING: Cancer and Reproductive Harm - www.p65warnings.ca.gov	
203736	<!> WARNING: Cancer and Reproductive Harm - www.p65warnings.ca.gov	
203737	<!> WARNING: Cancer and Reproductive Harm - www.p65warnings.ca.gov	
203738	<!> WARNING: Cancer and Reproductive Harm - www.p65warnings.ca.gov	
203739	<!> WARNING: Cancer and Reproductive Harm - www.p65warnings.ca.gov	
203740	<!> WARNING: Cancer and Reproductive Harm - www.p65warnings.ca.gov	
203741	<!> WARNING: Cancer and Reproductive Harm - www.p65warnings.ca.gov	
203742	<!> WARNING: Cancer and Reproductive Harm - www.p65warnings.ca.gov	
203743	<!> WARNING: Cancer and Reproductive Harm - www.p65warnings.ca.gov	
203744	<!> WARNING: Cancer and Reproductive Harm - www.p65warnings.ca.gov	
203745	<!> WARNING: Cancer and Reproductive Harm - www.p65warnings.ca.gov	
203746	<!> WARNING: Cancer and Reproductive Harm - www.p65warnings.ca.gov	
203748	<!> WARNING: Cancer and Reproductive Harm - www.p65warnings.ca.gov	
203749	<!> WARNING: Cancer and Reproductive Harm - www.p65warnings.ca.gov	
203855	<!> WARNING: Cancer and Reproductive Harm - www.p65warnings.ca.gov	Chromium
203856	<!> WARNING: Cancer and Reproductive Harm - www.p65warnings.ca.gov	Chromium
203857	<!> WARNING: Cancer and Reproductive Harm - www.p65warnings.ca.gov	Chromium
203859	<!> WARNING: Cancer and Reproductive Harm - www.p65warnings.ca.gov	Chromium
203865	<!> WARNING: Cancer and Reproductive Harm - www.p65warnings.ca.gov	CHROMIUM
204182	<!> WARNING: Cancer - www.p65warnings.ca.gov	CHROMIUM
204189	<!> WARNING: Cancer and Reproductive Harm - www.p65warnings.ca.gov	CHROMIUM



▲ For **Proposition 65** warnings please refer to pages 48-59 at the end of this section.

Proposition 65 Warnings

Below is a listing of all items that come with a Proposition 65 Warning. All eligible items are in numerical order.

SECTION 6 • PAGE 56

STOCK#	WARNING	CHEMICAL	CAS1
210812	<I> WARNING: Cancer and Reproductive Harm - www.p65warnings.ca.gov	LEAD	7439-92-1
210815	<I> WARNING: Cancer and Reproductive Harm - www.p65warnings.ca.gov	LEAD	7439-92-1
210818	<I> WARNING: Cancer and Reproductive Harm - www.p65warnings.ca.gov	LEAD	7439-92-1
210824	<I> WARNING: Cancer and Reproductive Harm - www.p65warnings.ca.gov	LEAD	7439-92-1
210912	<I> WARNING: Cancer and Reproductive Harm - www.p65warnings.ca.gov	LEAD	7439-92-1
210915	<I> WARNING: Cancer and Reproductive Harm - www.p65warnings.ca.gov	LEAD	7439-92-1
210918	<I> WARNING: Cancer and Reproductive Harm - www.p65warnings.ca.gov	LEAD	7439-92-1
210924	<I> WARNING: Cancer and Reproductive Harm - www.p65warnings.ca.gov	LEAD	7439-92-1
211418	<I> WARNING: Cancer and Reproductive Harm - www.p65warnings.ca.gov	LEAD	7439-92-1
211472	<I> WARNING: Cancer and Reproductive Harm - www.p65warnings.ca.gov	LEAD	7439-92-1
211943	<I> WARNING: Cancer and Reproductive Harm - www.p65warnings.ca.gov	LEAD	7439-92-1
213103	<I> WARNING: Cancer and Reproductive Harm - www.p65warnings.ca.gov	LEAD AND LEAD COMPOUNDS	7439-92-1
213107	<I> WARNING: Cancer and Reproductive Harm - www.p65warnings.ca.gov	LEAD AND LEAD COMPOUNDS	7439-92-1
213115	<I> WARNING: Cancer and Reproductive Harm - www.p65warnings.ca.gov	LEAD AND LEAD COMPOUNDS	7439-92-1
213120	<I> WARNING: Cancer and Reproductive Harm - www.p65warnings.ca.gov	LEAD AND LEAD COMPOUNDS	7439-92-1
213124	<I> WARNING: Cancer and Reproductive Harm - www.p65warnings.ca.gov	LEAD AND LEAD COMPOUNDS	7439-92-1
213129	<I> WARNING: Cancer and Reproductive Harm - www.p65warnings.ca.gov	LEAD AND LEAD COMPOUNDS	7439-92-1
213136	<I> WARNING: Cancer and Reproductive Harm - www.p65warnings.ca.gov	LEAD AND LEAD COMPOUNDS	7439-92-1
213137	<I> WARNING: Cancer and Reproductive Harm - www.p65warnings.ca.gov	LEAD AND LEAD COMPOUNDS	7439-92-1
213138	<I> WARNING: Cancer and Reproductive Harm - www.p65warnings.ca.gov	LEAD AND LEAD COMPOUNDS	7439-92-1
213140	<I> WARNING: Cancer and Reproductive Harm - www.p65warnings.ca.gov	LEAD AND LEAD COMPOUNDS	7439-92-1
213141	<I> WARNING: Cancer and Reproductive Harm - www.p65warnings.ca.gov	LEAD AND LEAD COMPOUNDS	7439-92-1
213143	<I> WARNING: Cancer and Reproductive Harm - www.p65warnings.ca.gov	LEAD AND LEAD COMPOUNDS	7439-92-1
213145	<I> WARNING: Cancer and Reproductive Harm - www.p65warnings.ca.gov	LEAD AND LEAD COMPOUNDS	7439-92-1



▲ For **Proposition 65** warnings please refer to pages 48-59 at the end of this section.

Proposition 65 Warnings

Below is a listing of all items that come with a Proposition 65 Warning. All eligible items are in numerical order.

STOCK#	WARNING	CHEMICAL	CASI
213147	<!> WARNING: Cancer and Reproductive Harm - www.p65warnings.ca.gov	LEAD AND LEAD COMPOUNDS	7439-92-1
213152	<!> WARNING: Cancer and Reproductive Harm - www.p65warnings.ca.gov	LEAD AND LEAD COMPOUNDS	7439-92-1
213153	<!> WARNING: Cancer and Reproductive Harm - www.p65warnings.ca.gov	LEAD AND LEAD COMPOUNDS	7439-92-1
213154	<!> WARNING: Cancer and Reproductive Harm - www.p65warnings.ca.gov	LEAD AND LEAD COMPOUNDS	7439-92-1
213155	<!> WARNING: Cancer and Reproductive Harm - www.p65warnings.ca.gov	LEAD AND LEAD COMPOUNDS	7439-92-1
213157	<!> WARNING: Cancer and Reproductive Harm - www.p65warnings.ca.gov	LEAD AND LEAD COMPOUNDS	7439-92-1
213159	<!> WARNING: Cancer and Reproductive Harm - www.p65warnings.ca.gov	LEAD AND LEAD COMPOUNDS	7439-92-1
213160	<!> WARNING: Cancer and Reproductive Harm - www.p65warnings.ca.gov	LEAD AND LEAD COMPOUNDS	7439-92-1
213161	<!> WARNING: Cancer and Reproductive Harm - www.p65warnings.ca.gov	LEAD AND LEAD COMPOUNDS	7439-92-1
213163	<!> WARNING: Cancer and Reproductive Harm - www.p65warnings.ca.gov	LEAD AND LEAD COMPOUNDS	7439-92-1
213170	<!> WARNING: Cancer and Reproductive Harm - www.p65warnings.ca.gov	LEAD AND LEAD COMPOUNDS	7439-92-1
213220	<!> WARNING: Cancer and Reproductive Harm - www.p65warnings.ca.gov	LEAD AND LEAD COMPOUNDS	7439-92-1
213222	<!> WARNING: Cancer and Reproductive Harm - www.p65warnings.ca.gov	LEAD AND LEAD COMPOUNDS	7439-92-1
213224	<!> WARNING: Cancer and Reproductive Harm - www.p65warnings.ca.gov	LEAD AND LEAD COMPOUNDS	7439-92-1
213225	<!> WARNING: Cancer and Reproductive Harm - www.p65warnings.ca.gov	LEAD AND LEAD COMPOUNDS	7439-92-1
213230	<!> WARNING: Cancer and Reproductive Harm - www.p65warnings.ca.gov	LEAD AND LEAD COMPOUNDS	7439-92-1
213235	<!> WARNING: Cancer and Reproductive Harm - www.p65warnings.ca.gov	LEAD AND LEAD COMPOUNDS	7439-92-1
213237	<!> WARNING: Cancer and Reproductive Harm - www.p65warnings.ca.gov	LEAD AND LEAD COMPOUNDS	7439-92-1
213240	<!> WARNING: Cancer and Reproductive Harm - www.p65warnings.ca.gov	LEAD AND LEAD COMPOUNDS	7439-92-1
213246	<!> WARNING: Cancer and Reproductive Harm - www.p65warnings.ca.gov	LEAD AND LEAD COMPOUNDS	7439-92-1



▲ For **Proposition 65** warnings please refer to pages 48-59 at the end of this section.

Proposition 65 Warnings

Below is a listing of all items that come with a Proposition 65 Warning. All eligible items are In numerical order.

SECTION 6 • PAGE 58

STOCK#	WARNING	CHEMICAL		
214254	<I> WARNING: Cancer and Reproductive Harm - www.p65warnings.ca.gov	LEAD		
214255	<I> WARNING: Cancer and Reproductive Harm - www.p65warnings.ca.gov	LEAD AND LEAD COMPOUNDS; NICKEL (METALLIC)		
214256	<I> WARNING: Cancer and Reproductive Harm - www.p65warnings.ca.gov	LEAD AND LEAD COMPOUNDS; NICKEL (METALLIC)		
214304	<I> WARNING: Cancer and Reproductive Harm - www.p65warnings.ca.gov	LEAD AND LEAD COMPOUNDS; NICKEL (METALLIC)		
214306	<I> WARNING: Cancer and Reproductive Harm - www.p65warnings.ca.gov	LEAD		
214406	<I> WARNING: Cancer and Reproductive Harm - www.p65warnings.ca.gov	LEAD AND LEAD COMPOUNDS		
STOCK#	WARNING	CHEMICAL	CAS1	CAS2
214601	<I> WARNING: Cancer and Reproductive Harm - www.p65warnings.ca.gov	LEAD; CARBON MONOXIDE	7439-92-1	630-08-0
214602	<I> WARNING: Cancer and Reproductive Harm - www.p65warnings.ca.gov	LEAD; CARBON MONOXIDE	7439-92-1	630-08-0
214610	<I> WARNING: Cancer and Reproductive Harm - www.p65warnings.ca.gov	LEAD; CARBON MONOXIDE	7439-92-1	630-08-0
214611	<I> WARNING: Cancer and Reproductive Harm - www.p65warnings.ca.gov	LEAD; CARBON MONOXIDE	7439-92-1	630-08-0
214651	<I> WARNING: Cancer and Reproductive Harm - www.p65warnings.ca.gov	LEAD; CARBON MONOXIDE	7439-92-1	630-08-0
214661	<I> WARNING: Cancer and Reproductive Harm - www.p65warnings.ca.gov	LEAD; CARBON MONOXIDE	7439-92-1	630-08-0
STOCK#	WARNING	CHEMICAL		
233502	<I> WARNING: Cancer and Reproductive Harm - www.p65warnings.ca.gov	LEAD		
233752	<I> WARNING: Cancer and Reproductive Harm - www.p65warnings.ca.gov	LEAD		
236066	<I> WARNING: Cancer and Reproductive Harm - www.p65warnings.ca.gov	LEAD		
236102	<I> WARNING: Cancer and Reproductive Harm - www.p65warnings.ca.gov	LEAD		
236103	<I> WARNING: Cancer and Reproductive Harm - www.p65warnings.ca.gov	LEAD		
237023	<I> WARNING: Cancer and Reproductive Harm - www.p65warnings.ca.gov	LEAD AND LEAD COMPOUNDS; NICKEL (METALLIC)		
250021	<I> WARNING: Cancer. www.P65Warnings.ca.gov	CARBON BLACK		
250022	<I> WARNING: Cancer. www.P65Warnings.ca.gov	CARBON BLACK		
250026	<I> WARNING: Cancer and Reproductive Harm - www.p65warnings.ca.gov	DEHP		



▲ For **Proposition 65** warnings please refer to pages 48-59 at the end of this section.

Proposition 65 Warnings

Below is a listing of all items that come with a Proposition 65 Warning. All eligible items are in numerical order.

STOCK#	WARNING	CHEMICAL	
250028	<!> WARNING: Cancer and Reproductive Harm - www.p65warnings.ca.gov	DEHP	
STOCK#	WARNING	CHEMICAL	CAS1
290000	<!> WARNING: Cancer and Reproductive Harm - www.p65warnings.ca.gov	LEAD AND LEAD COMPOUNDS; NBR	9003-18-3
290001	<!> WARNING: Cancer and Reproductive Harm - www.p65warnings.ca.gov	LEAD	
290002	<!> WARNING: Cancer and Reproductive Harm - www.p65warnings.ca.gov	LEAD AND LEAD COMPOUNDS; NICKEL (METALLIC)	
290004	<!> WARNING: Cancer and Reproductive Harm - www.p65warnings.ca.gov	LEAD	
290005	<!> WARNING: Cancer and Reproductive Harm - www.p65warnings.ca.gov	LEAD	
290010	<!> WARNING: Cancer and Reproductive Harm - www.p65warnings.ca.gov	LEAD	
290011	<!> WARNING: Cancer and Reproductive Harm - www.p65warnings.ca.gov	LEAD	
290190	<!> WARNING: Cancer and Reproductive Harm - www.p65warnings.ca.gov	LEAD AND LEAD COMPOUNDS; NICKEL (METALLIC)	
291303	<!> WARNING: Cancer and Reproductive Harm - www.p65warnings.ca.gov	LEAD	
291405	<!> WARNING: Cancer and Reproductive Harm - www.p65warnings.ca.gov	LEAD	
291409	<!> WARNING: Cancer and Reproductive Harm - www.p65warnings.ca.gov	LEAD	
291410	<!> WARNING: Cancer and Reproductive Harm - www.p65warnings.ca.gov	LEAD	
291411	<!> WARNING: Cancer and Reproductive Harm - www.p65warnings.ca.gov	LEAD	
291412	<!> WARNING: Cancer and Reproductive Harm - www.p65warnings.ca.gov	LEAD	
291416	<!> WARNING: Cancer and Reproductive Harm - www.p65warnings.ca.gov	LEAD	
392200	<!> WARNING: Cancer and Reproductive Harm - www.p65warnings.ca.gov	LEAD	
392201	<!> WARNING: Cancer and Reproductive Harm - www.p65warnings.ca.gov	LEAD	
392205	<!> WARNING: Cancer and Reproductive Harm - www.p65warnings.ca.gov	LEAD	
392206	<!> WARNING: Cancer and Reproductive Harm - www.p65warnings.ca.gov	LEAD	
392230	<!> WARNING: Cancer and Reproductive Harm - www.p65warnings.ca.gov		
392231	<!> WARNING: Cancer and Reproductive Harm - www.p65warnings.ca.gov		
STOCK#	WARNING	CHEMICAL	CAS1
392243	<!> WARNING: Cancer - www.p65warnings.ca.gov	STYRENE	100-42-5
392244	<!> WARNING: Cancer - www.p65warnings.ca.gov	STYRENE	100-42-5
392250	<!> WARNING: Cancer - www.p65warnings.ca.gov	STYRENE	100-42-5
392296	<!> WARNING: Cancer and Reproductive Harm - www.p65warnings.ca.gov		
392297	<!> WARNING: Cancer and Reproductive Harm - www.p65warnings.ca.gov		
392298	<!> WARNING: Cancer and Reproductive Harm - www.p65warnings.ca.gov		



▲ For **Proposition 65** warnings please refer to pages 48-59 at the end of this section.