

# 66" X 36" SITKA

ACRYLIC DROP-IN TUB

SKU: 948269



**FEATURES**

Textured slip-resistant bottom.  
Pre-leveled base.  
ABS drain version available if needed for your installation.  
Optional Quick Connect Drop-In Drain Kit Includes:  
Floor Plate, 1-1/2" PVC Pipe, 2" x 1-1/2" Trap Adapters, 1  
Brass Threaded, 1 Brass Unthreaded Tailpiece and Plug.  
Installs above your subfloor, but underneath your cement  
floor or tile, so you do not need access below the fixture.  
A dual-mount design, this can be installed as a drop-in or  
undermount tub.

**SIGNATURE HARDWARE Lifetime Warranty**

See website for detailed warranty information.

**CONTENTS**

AIR & WHIRLPOOL TUB .....	PAGE 2
66" X 36 TUB .....	PAGE 3

# AIR TUB AND WHIRLPOOL TUB

## COMPONENTS LIST

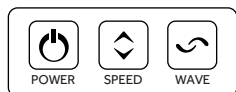
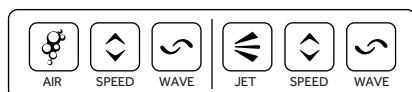
- Powerful whirlpool pump with variable flow device
- Heated blower for air bath system

## INSTALLATION

- Whirlpool and Total Massage units require dedicated 20 Amp, 120V service
- You must provide a receptacle with a 20 Amp configuration
- Electrical outlet must be mounted 4" (101mm) above the floor line and 12" max (305mm) inside from the edge of the bathtub, or in accordance with local building and electrical codes

## INTEGRATED CONTROL PANEL

- Intuitive electronic control buttons

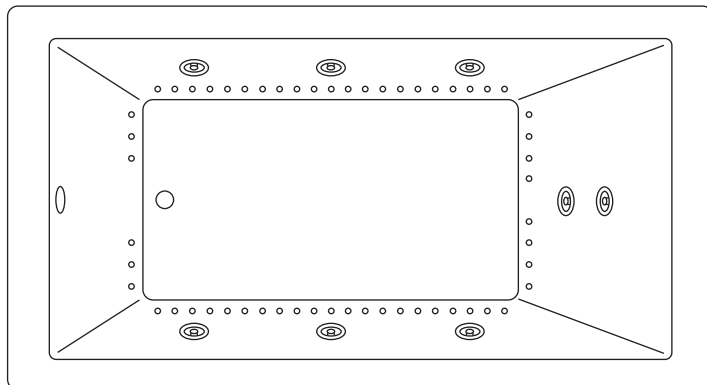


## INSIDE OF BATH

- (8) HIGH-FLOW DIRECTIONAL AND VOLUME-ADJUSTABLE WHIRLPOOL JETS
- (56) CHANNEL-FED AIRJETS (air bath and total massage)

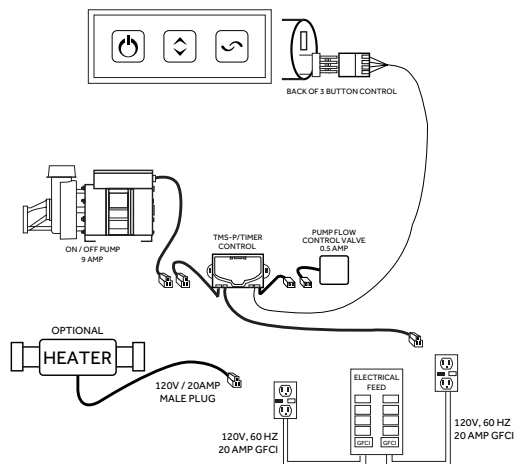


WHIRLPOOL JET

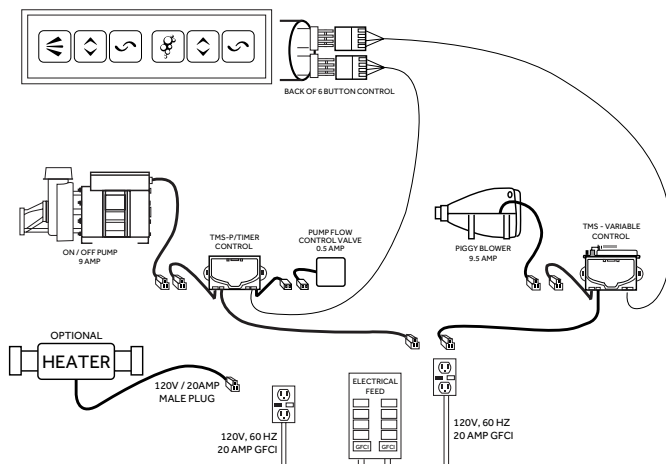


## ELECTRICAL CONFIGURATIONS

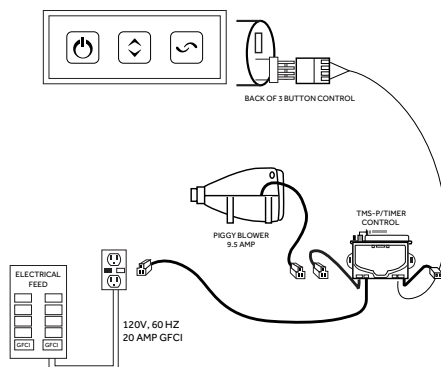
### WHIRLPOOL CIRCUIT WITH OPTIONAL HEATER



### TOTAL MESSAGE CIRCUIT WITH OPTIONAL HEATER



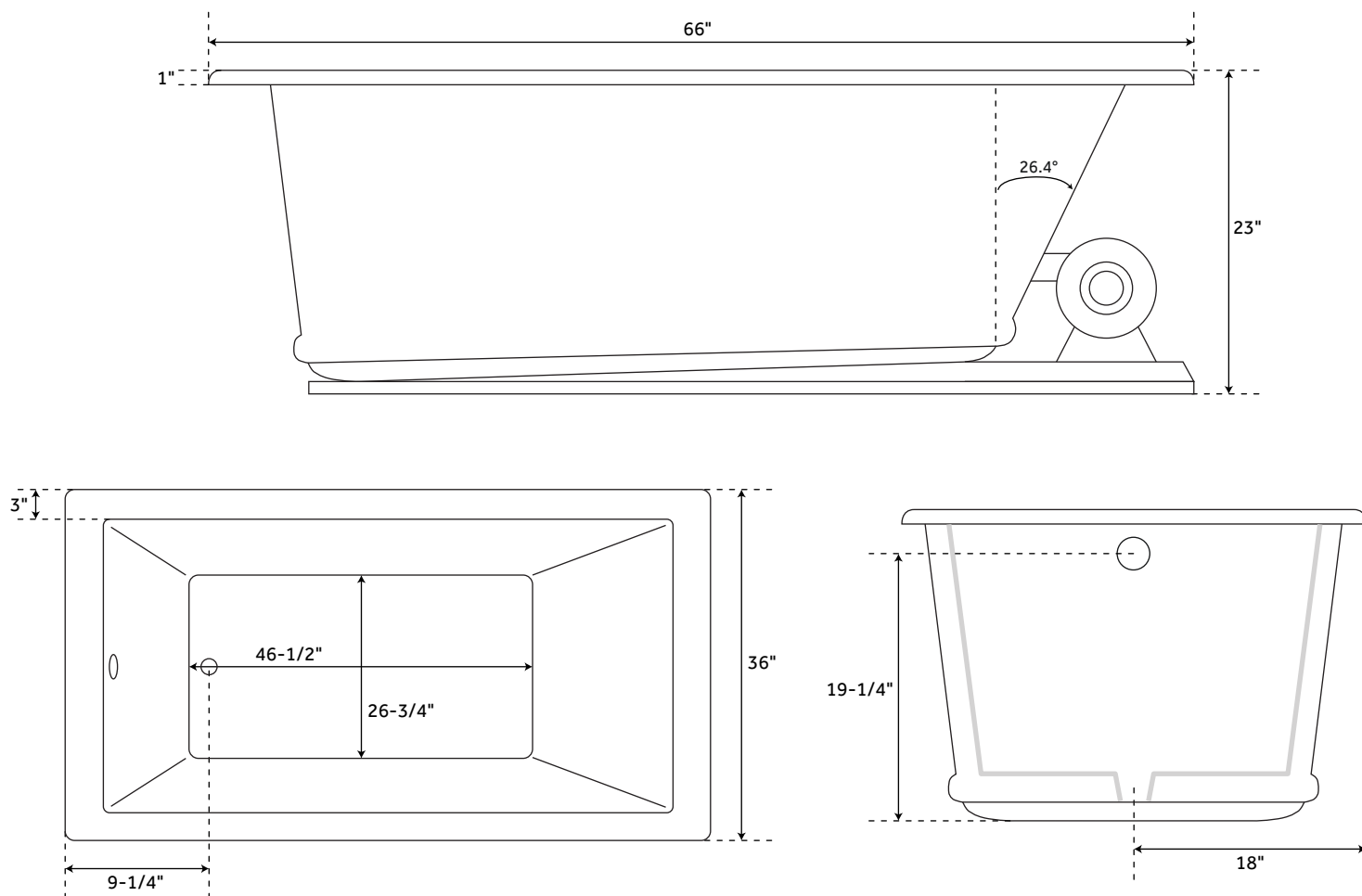
### AIR MESSAGE CIRCUIT



# 66" X 36" SITKA

## ACRYLIC DROP-IN TUB

SKU: 948269



### FEATURES

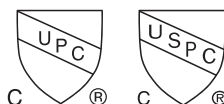
Product Finish: Biscuit  
Overflow Hole: Yes  
Shape: Rectangle  
Material: Acrylic  
Length: 66"  
Width: 36"  
Height: 23"  
Tub Interior Length: 46-1/2"  
Tub Interior Width: 26-3/4"  
Water Depth To Overflow: 19-1/4"  
Drain Included: Optional  
Drain Placement: End  
Faucet Included: No  
Water Capacity (Gallons): 75  
Tub Weight Uncrated (lbs): 124  
Tub Weight Crated (lbs): 234  
All dimensions ( $\pm 1/2"$ ).

### SOAKING TUB CODES/STANDARDS

cUPC  
CSA B45.5/IAPMO Z124  
Massachusetts Accepted

### WITH OPTIONAL AIR SYSTEM CODES/STANDARDS

cUSPC  
ASME A112.19.7/CSA B45.10  
UL 1795  
CSA C22.2 No. 218.2



### SIGNATURE HARDWARE LIFETIME WARRANTY

See website for warranty information



All dimensions and specifications are nominal and may vary. Use actual products for accuracy in critical situations.

PAGE 3