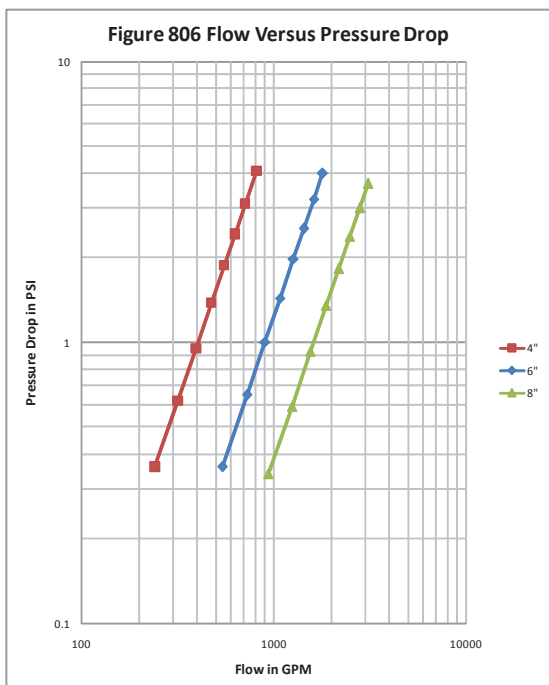
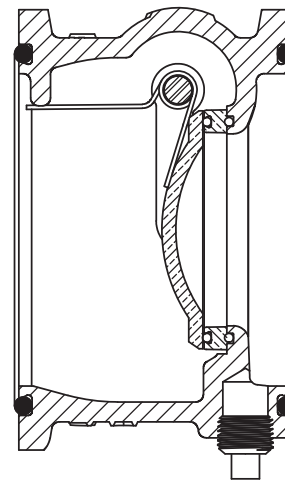
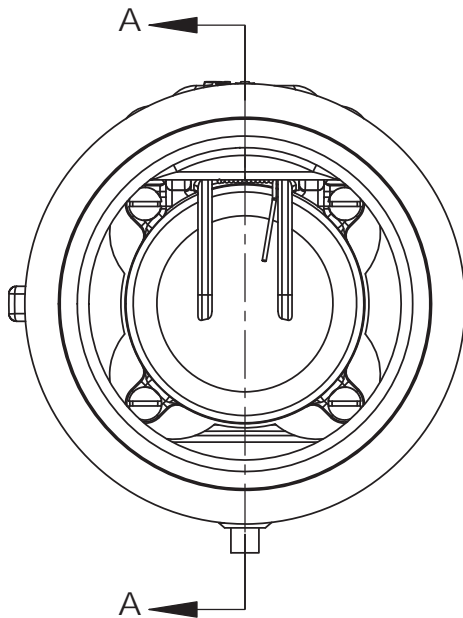
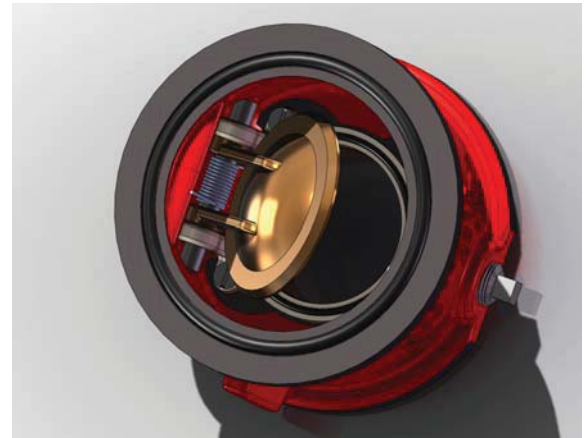


KENNEDY VALVE FIGURE 806 WAFER CHECK VALVES

UL/ULC Listed and FM Approved

300 psi rated working pressure, non-shock
Hydrostatically tested at the factory to
600 psi, seat and shell

- Sizes 4, 6, and 8 inch
- Ductile Iron Body
- Aluminum Bronze Clapper and Seat Ring
- Resilient Seating
- "O" Ring End Seals
- Stainless Steel Spring and Clapper Pin
- All Components Lead Free
- Fusion Bonded Epoxy Coated Interior and Exterior

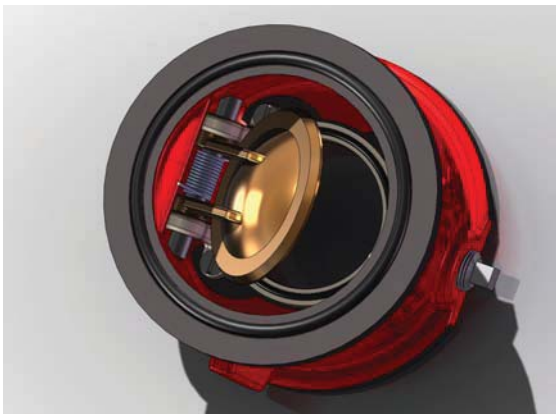
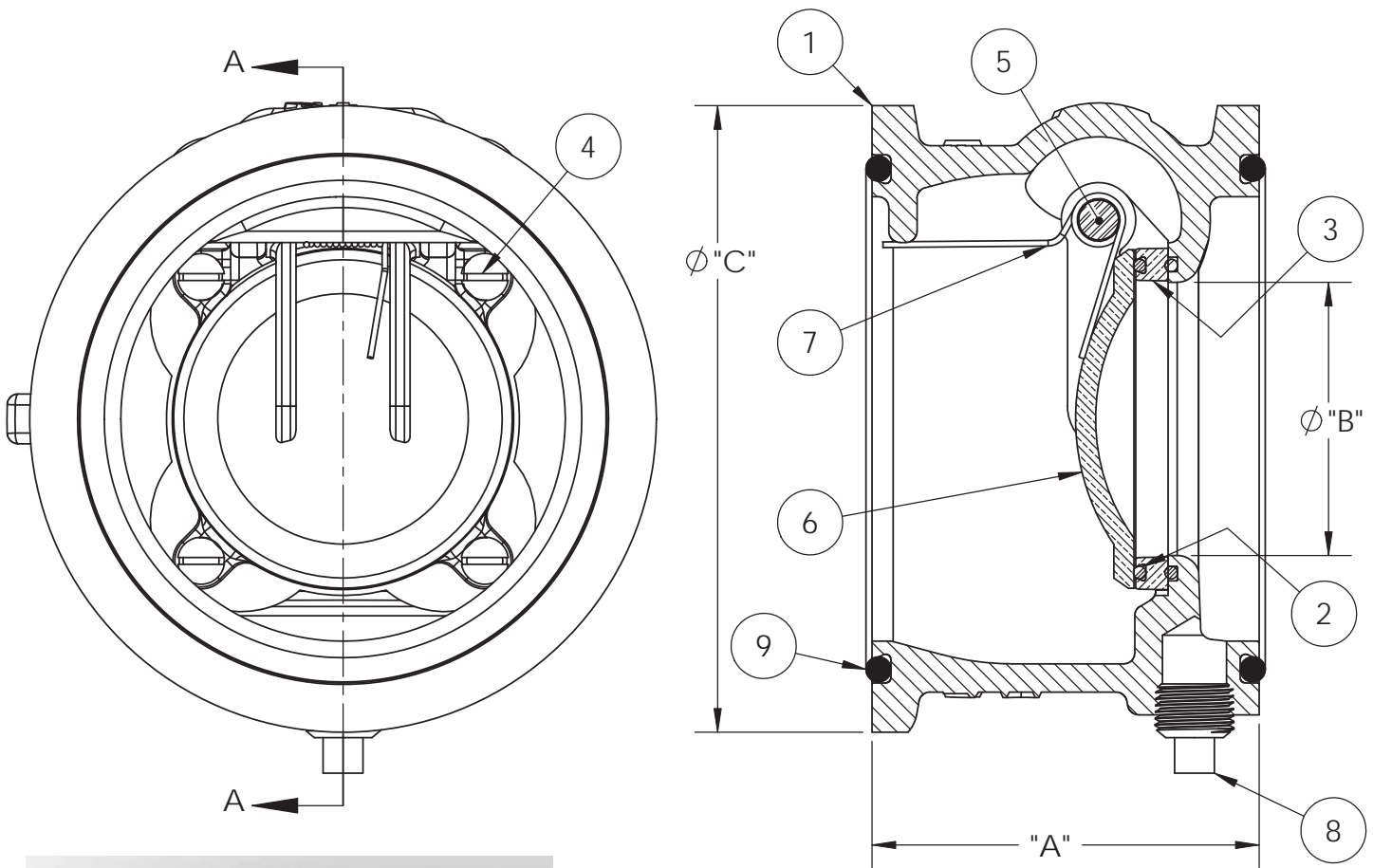


Compact, for installation between standard ASME B16.1 class 125 or class 150 flanges. Mounting between class 250/300 flanges requires use of spacers. Kennedy WAFER CHECK VALVES have spring loaded aluminum bronze clappers, resilient seating, and utilize "O" rings rather than gaskets for end seals.

Flow Verses Pressure Drop Data from
Utah Water Research Laboratory
Report No. 2040 and 2073

Wafer Check Valves Technical/Dimensional Data

ITEM NO.	DESCRIPTION	MATERIAL	QTY.
1	Body	Ductile Iron, ASTM A536 grade 70-50-5	1
2	Oring	Buna-N	2
3	Seat Ring	Aluminum Bronze, ASTM B806 C95400/C95500	1
4	Screw	18-8 Stainless Steel	4 (8" SIZE HAS 6)
5	Pin	18-8 Stainless Steel	1
6	Clapper	Aluminum Bronze, ASTM B806 C95400/C95500	1
7	Spring	302 Stainless Steel	1
8	1/2" NPT Pipe Plug	Steel	1 (4" SIZE ONLY)
9	Oring	Buna-N	2



SIZE	"A"	"B"	"C"	WT lbs
4"	4.25	3.00	6.88	12
6"	4.25	4.50	8.75	18
8"	4.25	6.00	11.00	26