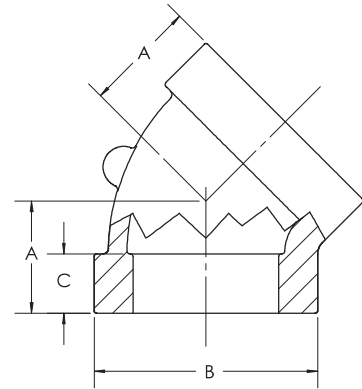


CAST IRON 45° ELL CLASS 125

NPS	Center to End A	Outside Dia. of Band B (min)	Length of Threads C (min)	Take Out
1/4	—	—	—	—
3/8	—	—	—	—
1/2	0.88	1.34	0.43	0.34
3/4	0.98	1.63	0.50	0.43
1	1.12	1.95	0.58	0.43
1 1/4	1.29	2.39	0.67	0.58
1 1/2	1.43	2.68	0.70	0.70
2	1.68	3.28	0.75	0.92
2 1/2	1.95	3.86	0.92	0.81
3	2.17	4.62	0.98	0.97
3 1/2	—	—	—	—
4	2.61	5.79	1.08	1.31
5	—	—	—	—
6	—	—	—	—



CAST IRON STRAIGHT TEE CLASS 125

NPS	Center to End A	Outside Dia. of Band B (min)	Length of Threads C (min)	Take Out
1/4	—	—	—	—
3/8	0.95	1.12	0.36	0.54
1/2	1.12	1.34	0.43	0.58
3/4	1.31	1.63	0.50	0.76
1	1.50	1.95	0.58	0.81
1 1/4	1.75	2.39	0.67	1.04
1 1/2	1.94	2.68	0.70	1.21
2	2.25	3.28	0.75	1.49
2 1/2	2.70	3.86	0.92	1.56
3	3.08	4.62	0.98	1.88
3 1/2	3.42	5.20	1.03	2.17
4	3.79	5.79	1.08	2.49
5	—	—	—	—
6	—	—	—	—

