

Victaulic® FireLock™ Installation-Ready™ Fittings No. 101, 102, 103, 104, 143



No. 101



No. 102



No. 103



No. 104



No. 143

1.0 PRODUCT DESCRIPTION

Application

- Patented *Installation-Ready* Fittings for Fire Protection Systems.

Available Sizes

- 1 ¼ – 2 ½"/DN32-DN65.
- 1" *FireLock IGS™ Installation-Ready* Fittings available. See [publication 10.54](#).

Pipe Material

- Schedule 10, Schedule 40 or specialty carbon steel pipe listed in Section 5. For use with alternative materials and wall thicknesses please contact Victaulic.
- For exceptions reference section 6.0 Notifications

Maximum Working Pressure

- Up to 365 psi/2517 kPa/25 bar.

Pipe Preparation

- Roll Grooved, Cut Grooved.

2.0 CERTIFICATION/LISTINGS



ALWAYS REFER TO ANY NOTIFICATIONS AT THE END OF THIS DOCUMENT REGARDING PRODUCT INSTALLATION, MAINTENANCE OR SUPPORT.

3.0 SPECIFICATIONS - MATERIAL

Fitting Housing: Ductile iron conforming to ASTM A536, Grade 65-45-12

Housing Coating: (specify choice)

- Orange coating.
- Red coating (standard for EMEA-I and Asia Pacific).
- Optional: Hot dipped galvanized.

Gasket:

Grade “E” EPDM (Type A) Vic-Plus™ Pre-lubricated Gasket

EPDM (Violet Color Code). Applicable for wet and dry (oil-free air) fire protection systems only. Listed/Approved for continuous use in wet and dry systems. Listed/Approved for dry systems at -40°F/-40°C and above. Not compatible for use with hot water services or steam services.

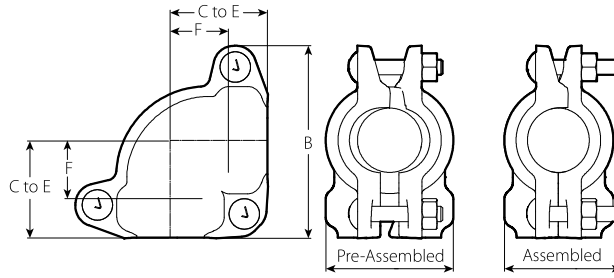
NOTES

- Reference should always be made to [publication 1-100](#), Victaulic Field Installation Handbook for gasket lubrication instructions.
- Services listed are General Service Guidelines only. It should be noted that there are services for which these gaskets are not compatible. Reference should always be made to [publication 05.01](#), Victaulic Gasket Selection Guide for specific gasket service guidelines and for a listing of services which are not compatible.

Bolts/Nuts: Carbon steel oval neck track bolts meeting the mechanical property requirements of ASTM A449 (imperial) and ISO 898-1 Class 9.8 (M10-M16) Class 8.8 (M20 and greater). Carbon steel hex nuts meeting the physical and chemical requirements of ASTM A563 Grade B (imperial) and ASTM A563M Class 9 (metric). Track bolts and hex nuts are zinc electroplated per ASTM B633 Fe/Zn 5, finish Type III (imperial) or Type II (metric).

4.0 DIMENSIONS

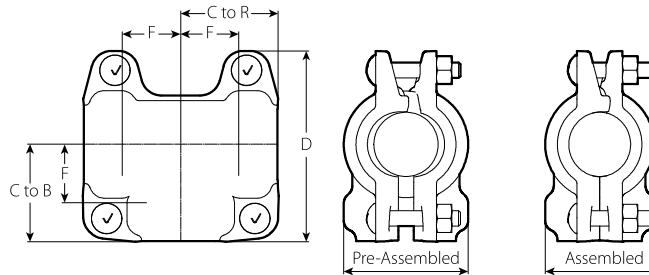
No. 101 Installation-Ready 90° Elbow



Size		Bolt/Nut		Dimensions					Weight
Nominal	Actual Outside Diameter	Qty.	Size	F Take Out	C to E	B	Pre-Assembled	Assembled	Approximate (Each)
inches DN	inches mm		inches mm	inches mm	inches mm	inches mm	inches mm	inches mm	lb kg
1 ¼ DN32	1.660 42.4	3	¾ x 2 M10 x 50	1.50 38	2.44 62	4.75 121	3.19 81	2.88 73	3.2 1.4
1 ½ DN40	1.900 48.3	3	¾ x 2 M10 x 50	1.56 40	2.56 65	5.00 127	3.50 89	3.06 78	3.7 1.7
2 DN50	2.375 60.3	3	7/16 x 2.75 M11 x 69	1.88 48	2.81 71	5.63 143	4.19 106	3.63 92	5.4 2.5
2 ½	2.875 73.0	3	7/16 x 2.75 M11 x 69	2.13 54	3.06 77	6.13 156	4.63 118	4.06 103	6.4 2.9
DN65	3.000 76.1	3	7/16 x 2.75 M11 x 69	2.19 56	3.13 80	6.19 157	4.75 121	4.19 106	6.6 3.0

4.1 DIMENSIONS

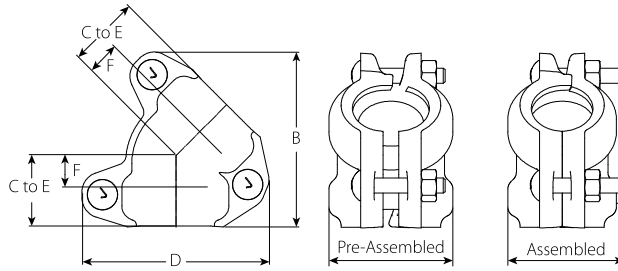
No. 102 Installation-Ready Tee



Size		Bolt/Nut		Dimensions						Weight
Nominal	Actual Outside Diameter	Qty.	Size	F Take Out	C to B	C to R	D	Pre-Assembled	Assembled	Approximate (Each)
inches DN	inches mm		inches mm	inches mm	inches mm	inches mm	inches mm	inches mm	inches mm	lb kg
1 ¼ DN32	1.660 42.4	4	¾ x 2 M10 x 50	1.50 38	2.44 62	2.44 62	4.75 121	3.19 81	2.88 73	4.2 1.9
1 ½ DN40	1.900 48.3	4	¾ x 2 M10 x 50	1.56 40	2.56 65	2.56 65	5.00 127	3.50 89	3.06 78	4.6 2.1
2 DN50	2.375 60.3	4	7/16 x 2.75 M11 x 69	1.88 48	2.88 73	2.88 73	5.50 140	4.19 106	3.63 92	6.4 2.9
2 ½	2.875 73.0	4	7/16 x 2.75 M11 x 69	2.13 54	3.13 80	3.13 80	6.00 152	4.63 118	4.06 103	7.5 3.4
DN65	3.000 76.1	4	7/16 x 2.75 M11 x 69	2.19 56	3.19 81	3.19 81	6.19 157	4.75 121	4.19 106	7.8 3.5

4.2 DIMENSIONS

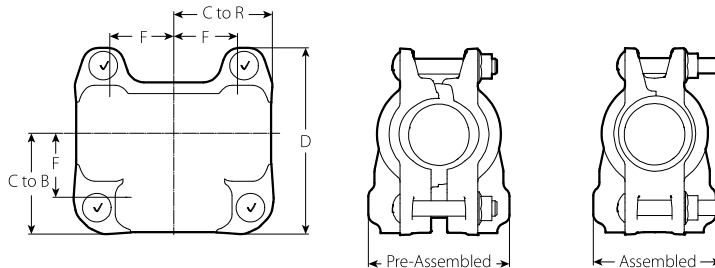
No. 103 Installation-Ready 45° Elbow



Size		Bolt/Nut		Dimensions						Weight	
Nominal inches DN	Actual Outside Diameter inches mm	Qty.	Size inches mm	F Take Out inches mm	C to E inches mm	B inches mm	D inches mm	Pre- Assembled inches mm	Assembled inches mm	Approximate (Each) lb kg	
1 ¼ DN32	1.660 42.4	3	¾ x 2 M10 x 50	0.81 21	1.81 46	4.38 111	4.69 119	3.19 81	2.88 73	2.8 1.3	
1 ½ DN40	1.900 48.3	3	¾ x 2 M10 x 50	0.94 24	1.88 48	4.50 114	4.81 122	3.44 87	3.06 78	3.1 1.4	
2 DN50	2.375 60.3	3	7/16 x 2.75 M11 x 69	1.00 25	2.00 51	5.00 127	5.44 138	4.19 106	3.63 92	4.4 2.0	
2 ½	2.875 73.0	3	7/16 x 2.75 M11 x 69	1.13 29	2.06 52	5.38 135	5.94 151	4.63 117	4.06 103	4.9 2.2	
DN65	3.000 76.1	3	7/16 x 2.75 M11 x 69	1.13 29	2.13 54	5.50 140	6.13 156	4.75 121	4.19 106	5.1 2.3	

4.3 DIMENSIONS

No. 104 Installation-Ready Bullhead Tee



Size		Bolt/Nut		Dimensions						Weight	
Nominal inches DN	Actual Outside Diameter inches mm	Qty.	Size inches mm	F Take Out inches mm	C to B inches mm	C to R inches mm	D inches mm	Pre- Assembled inches mm	Assembled inches mm	Approx. (Each) lb kg	
1 ½ x 1 ½ x 2 DN40 x DN40 x DN50	1.900 x 1.900 x 2.375 48.3 x 48.3 x 60.3	4	7/16 x 2.75 M11 x 69	1.88 48	2.88 73	2.88 73	5.38 137	4.13 105	3.75 95	7.0 3.2	
2 x 2 x 2 ½ DN50 x DN50 x 73.0 mm	2.375 x 2.375 x 2.875 60.3 x 60.3 x 73.0	4	7/16 x 2.75 M11 x 69	2.13 54	3.13 79	3.13 79	5.88 149	4.63 117	4.13 105	8.6 3.9	
2 ½ x 2 ½ x 3 73.0 mm x 73.0 mm x DN80	2.875 x 2.875 x 3.500 73.0 x 73.0 x 88.9	4	7/16 x 2.75 M11 x 69	2.38 60	3.50 89	3.50 89	6.50 165	5.25 133	4.75 121	10.8 4.9	