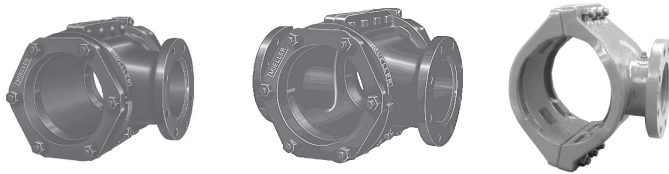
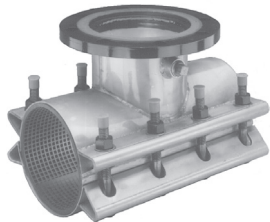


### Mueller® Tapping Sleeves and Crosses



- Full range of Tapping Sleeves and Crosses to fit most types of pipe including cast iron, ductile iron, A-C, and cast iron O.D. PVC--Also outlet sealed Tapping Sleeves for cast iron O.D. PVC plastic pipe and all classes of ductile iron and cast iron pipe through Class D pit cast iron.
- Sizes range from 4"x4" to 24"x24".
- All sleeves have outlet flange with dimensions and drilling that comply with ANSI B16.1, class 125 and with MSS SP-60.
- Available with optional Mueller HP® Epoxy Coating A-C sleeves are coated with orange primer. T-28 sleeve has epoxy coating and 304SS nuts and bolts as standard.
- Maximum working pressures: see product listings.

### Mueller Stainless Steel Tapping



- Sizes to fit iron pipe size PVC, C900 cast iron O.D. PVC, A-C, cast iron and ductile iron pipe.
- Sizes range from 4"x4" through 24"x12".
- Test plug standard.
- Fully passivated.
- Choice of FL or MJ integral outlet flange end connections
- "Waffle" 360° gasket with integral gap bridge.
- Maximum working pressures: see product listings.

### Mueller Cut-In Sleeve and Valve



- Mueller Cut-In Sleeve and Valve are used to install a gate valve in an existing cast iron, ductile iron, or cast iron O.D. PVC plastic pipe main when water interruption is permissible.
- Cut-In Sleeves are marked with length of pipe that is to be cut from main.
- Mechanical Joint ends speed installation.

### Mueller Tapping Valves



- Choice of Resilient Wedge or IBBM types.
- Sizes 2" through 48" Resilient Wedge 14" - 24" IBBM.
- One end flanged with alignment lip to attach to Tapping Sleeve, other end available with a variety of end connections with a special flange to permit attachment of Drilling Machine and Adapter.
- Meets all applicable parts of ANSI/AWWA C500, C509, or C515 Standards.
- Non-rising stem (NRS).
- 2" - 12" RWGV: maximum working pressure 350 psig (2400 kPa/24 barg) test pressure 700 psig (4800 kPa/48 barg)
- 14" - 48" RWGV: maximum working pressure 250 psig (1725 kPa/17 barg) test pressure 500 psig (3450 kPa/35 barg)
- IBBM: maximum working pressure 14"-24" 150 psig (1100 kPa/11 barg) - test pressure 300 psig (2100 kPa/21 barg).
- Mueller valves are designed for potable water applications

### Mueller Split Repair Sleeves

- Heavy cast iron construction.
- Long length for support and rigidity.



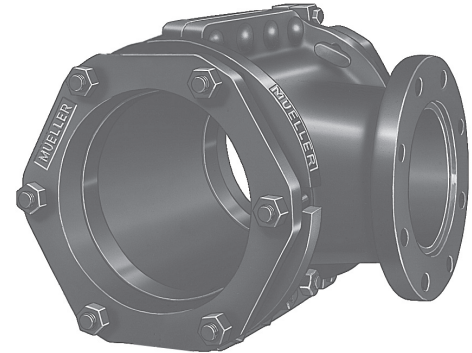
- 4" thru 24" sizes.
- 4" - 12" sizes--250 psig (1725 kPa/17 barg) maximum working pressure .
- 14" - 24" sizes--150 psig (1100 kPa/11 barg) maximum working pressure.



**WARNING:** Use on A-C pipe, which contains a known carcinogen, requires appropriate protective equipment and procedures be employed.

Rev. 7-17 Shaded area indicates changes

- Catalog number  
**H-615** Mechanical Joint Tapping Sleeve - with Duck Tipped end gaskets
- Sizes-- 4"-24" main and outlet (see chart below for available size combinations)
- Outlet flange drilling complies with ASME/ANSI B16.1 class 125, B16.42 class 150 and with MSS SP-60
- Certified to ANSI/NSF 61
- Ductile Iron body with 3/4" NPT test plug
- 4"-24" sizes--250 psig (1725 kPa/17 barg) maximum working pressure



H-615 shown

### Tapping Sleeve pipe information

Nominal size of main	O.D. Range of sleeve		Class and type of pipe	End Gasket part number
	Inch	mm		
4"	4.74"-4.86"	120.5-123.3	Cast iron classes 100, 150, 200 & A - all classes of ductile iron - cast iron O.D. PVC plastic pipe classes 150 & 200	195824
	4.87"-5.32"	123.8-135.0	Cast iron classes B, C, & D - A-C classes 100 & 150	195653
6"	6.84"-6.96"	173.8-176.7	Cast iron classes 100, 150, 200 & A - all classes of ductile iron - cast iron O.D. PVC plastic pipe classes 150 & 200	195825
	6.97"-7.40"	177.1-187.9	Cast iron classes B, C, & D - A-C classes 100 & 150	195654
8"	8.99"-9.11"	228.4-231.3	Cast iron classes 100, 150, 200, & A & B - all classes of ductile iron - cast iron O.D. PVC plastic pipe classes 150 & 200	195826
	9.12"-9.62"	231.7-244.2	Cast iron classes B, C, & D - A-C classes 100 & 150	195655
10"	11.04"-11.16"	280.5-283.4	Cast iron classes 150, 200, 250, & A & B - all classes of ductile iron - cast iron O.D. PVC plastic pipe classes 150 & 200	194680
12"	13.14"-13.26"	333.9-336.7	Cast iron classes 150, 200, 250, & A & B - all classes of ductile iron - cast iron O.D. PVC plastic pipe classes 150 & 200	194638
14"	15.22"-15.35"	386.7-389.8	Cast iron classes 50, 100, 150, 200, 250, A & B - all classes of ductile iron	195127
16"	17.32"-17.45"	440.0-443.1	Cast iron classes 50, 100, 150, 200, 250, A & B - all classes of ductile iron	195128
18"	19.42"-19.55"	493.4-496.5	Cast iron classes 50, 100, 150, 200, 250, A & B - all classes of ductile iron	195266
20"	21.52"-21.65"	546.7-549.8	Cast iron classes 50, 100, 150, 200, 250, A & B - all classes of ductile iron	195129
24"	25.72"-25.85"	653.4-656.5	Cast iron classes 50, 100, 150, 200, 250, A & B - all classes of ductile iron	195130

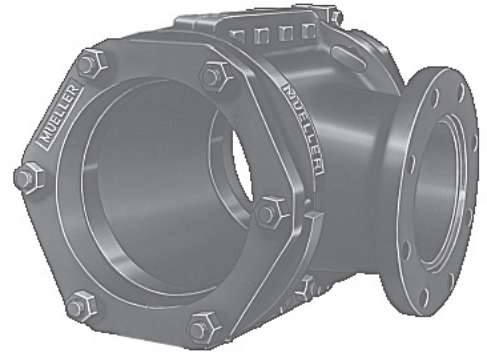
### Sizes available

Nominal size of main	Outlet size									
	4"	6"	8"	10"	12"	14"	16"	18"	20"	24"
4"	X	-	-	-	-	-	-	-	-	-
6"	X	X	-	-	-	-	-	-	-	-
8"	X	X	X	-	-	-	-	-	-	-
10"	X	X	X	X	-	-	-	-	-	-
12"	X	X	X	X	X	-	-	-	-	-
14"	-	X	X	X	X	X	-	-	-	-
16"	X	X	X	X	X	X	X	-	-	-
18"	X	X	X	X	X	-	X	X	-	-
20"	X	X	X	X	X	X	X	X	X	-
24"	X	X	X	X	X	X	X	X	X	X

# MECHANICAL JOINT TAPPING SLEEVE FOR PITCAST C.I. PIPE

Shaded area indicates change Rev. 7-17

- Catalog number  
**H-616** Mechanical Joint Tapping Sleeve - plain rubber end gaskets
- Sizes-- 10"-24" main and 4"-24" outlet (see chart below for available size combinations)
- Outlet flange drilling complies with ASME/ANSI B16.1 class 125, B16.42 class 150 and with MSS SP-60
- Ductile Iron body with 3/4" NPT test plug
- 10"-24" sizes--200 psig (1375 kPa/14 barg) maximum working pressure



H-616 shown

## Tapping Sleeve pipe information

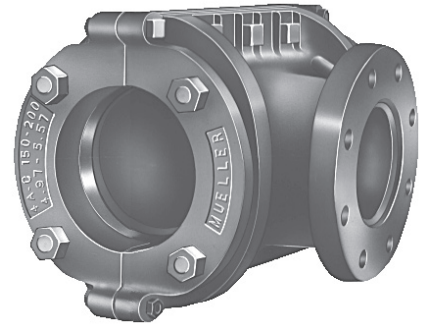
Nominal size of main	O.D. Range of sleeve		Class and type of pipe	End Gasket Part Numbers
	in.	mm		
10"	11.43"-11.46"	288.1-291.0	Cast iron classes C & D	194681
12"	13.44"-13.56"	341.5-344.3		194642
14"	15.59"-15.71"	396.1-398.9		195131
16"	17.74"-17.86"	450.7-453.5		195132
18"	19.84"-20.00"	504.1-507.9		195268
20"	21.98"-22.14"	558.4-562.3		195133
24"	26.24"-26.40"	666.6-670.5		195134

## Sizes available

Nominal size of main	Outlet size									
	4"	6"	8"	10"	12"	14"	16"	18"	20"	24"
10"	X	X	X	X	-	-	-	-	-	-
12"	X	X	X	X	X	-	-	-	-	-
14"	X	X	X	X	X	X	-	-	-	-
16"	X	X	X	X	X	X	X	-	-	-
18"	X	X	X	X	X	-	X	X	-	-
20"	X	X	X	X	X	X	X	X	X	-
24"	X	X	X	X	X	X	X	-	X	X

Rev. 2-18 Shaded area indicates changes

- Catalog number--  
**H-619** Mechanical Joint Tapping Sleeve
- 4"-12" main and outlet (see chart below for available size combinations)
- Specially designed for use on A-C pipe
- Outlet flange drilling complies with ASME/ANSI B16.1 class 125, B16.42 class 150 and with MSS SP-60
- Ductile Iron body with 3/4" NPT test plug
- 4"-12" sizes--200 psig (1375 kPa/14 barg) maximum working pressure



H-619 shown

### Tapping Sleeve pipe information

Nominal size of main	O.D. Range of sleeve		Class and type of pipe	End Gasket part number
	Inch	mm		
4"	4.97"-5.57"	126.3-141.4	A-C classes 150 & 200	195656
6"	7.05"-7.60"	179.2-192.9	A-C classes 100, 150 & 200	195657
8"	9.22"-9.79"	234.3-248.6	A-C classes 100, 150 & 200	195658
10"	11.77"-12.25"	299.1-311.1	A-C classes 150 & 200	194307
12"	14.03"-14.51"	356.5-368.5	A-C classes 150 & 200	195289

### Sizes available

Nominal size of main	Outlet size				
	4"	6"	8"	10"	12"
4"	X	-	-	-	-
6"	X	X	-	-	-
8"	X	X	X	-	-
10"	X	X	X	X	-
12"	X	X	X	X	X

NOTE: The actual diameter A-C pipe varies among manufacturers and from piece to piece. It is important to measure the pipe diameter at the point where the sleeve will be installed. The O.D. of A-C pipe can be reduced by following the recommendations of the specific pipe manufacturer.

# T-28 DUCTILE IRON TAPPING SLEEVE

- Catalog number  
**T-28 Dual Compression Seal Tapping Sleeve**
- Sizes—range from 6"-16" main and outlet (see chart below for available size)
- Fits all classes of pipe through Class D pit cast gray iron
- 3/8" test plug standard
- Epoxy coated ductile iron construction
- O-ring seals on outlet and flange connection
- Outlet flange drilling complies with ASME/ANSI B16.1 class 125, B16.42 class 150 and with MSS SP-60
- 304 Stainless steel bolts
- 250 psig (1725 kPa/17 barg) maximum working pressure



T-28 shown

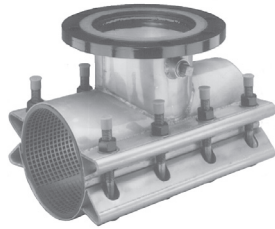
## Tapping Sleeve pipe information

Nominal size of main	O.D. Range of sleeve		Class and type of pipe
	in.	mm	
6"	6.90 - 7.10	175.26 - 180.34	Fits all classes of pipe through Class D pit cast gray iron.
8"	9.05 - 9.30	229.87 - 236.22	
10"	11.10 - 11.40	281.94 - 289.56	
12"	13.20 - 13.50	335.28 - 342.90	
16"	17.40 - 17.80	441.96 - 452.12	

## Sizes available

Nominal size of main	Outlet size				
	4"	6"	8"	10"	12"
6"	X	X	-	-	-
8"	X	X	X	-	-
10"	X	X	X	X	-
12"	X	X	X	X	X
16"	X	X	X	X	X

Rev. 7-17 Shaded area indicates changes



H-304SS shown



H-304MJ shown

- Catalog number-- **H-304** Stainless Steel Tapping Sleeve
- Sizes--4"-24" main and outlet (see chart below for available size combinations)
- Outlet choices: flange or integral MJ outlet
- Outlet flange material options: 304L Stainless steel, carbon steel, or ductile iron outlet flange which meets or exceeds all applicable requirements of ANSI B16.1, class 125 and B16.42 class 150 and in accordance with MSS-SP60
- Integral MJ flange is 304L stainless steel
- Certified to ANSI/NSF 61
- 3/4" NPT brass test plug (Stainless Steel optional)
- 4"-12" sizes--250 psig (1725 kPa/17 barg) maximum working pressure
- 14"-24" sizes--200 psig (1375 kPa/14 barg) maximum working pressure

### How to determine a Mueller Tapping Sleeve Part Number

Select the appropriate numbers from the pipe information chart that follows. Example: For 6"x6" with 7.30-7.50 O.D. Range and stainless steel flange. Resulting Part No. **0606H304SS0750**

Main size	Outlet size	Model Number	Flange Material	Maximum O.D.
06	06	H-304*	SS**	0750

\*3" outlet flange only available in stainless steel

\*\* H-304 is constant for all Mueller Stainless Steel Tapping Sleeves listed here

\*\* SS = stainless steel flange, CS = carbon steel flange, DI = ductile iron flange, MJ=integral mechanical joint outlet.\*

### Tapping Sleeve pipe information

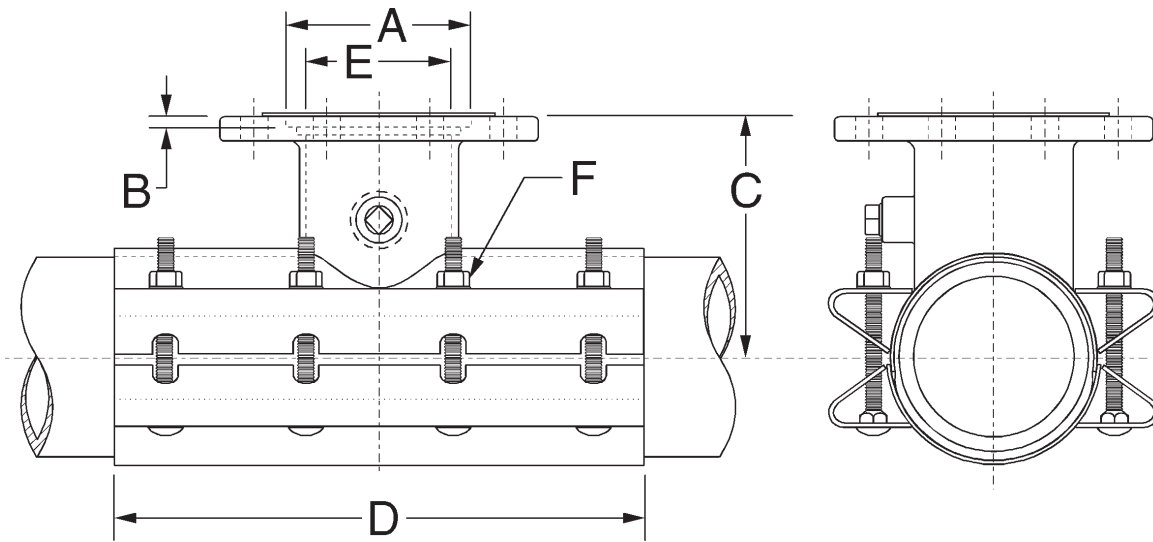
Size of main	Size of outlet glange	Available sleeve O.D. ranges		Class and type of pipe
4"	3", 4"	4.50-4.90	114.30-124.46	Iron pipe size PVC; C900 Cast Iron O.D. PVC; Cast iron 100-250 A, B, C, D; Ductile Iron; AC 100
		4.80-5.00	121.92-127.00	
6"	3", 4", 6"	6.59-6.99	167.39-177.55	Iron pipe size PVC; C900 Cast Iron O.D. PVC; Cast iron 100-250 A, B, C, D; Ductile Iron; AC 100, 150
		6.89-7.30	175.00-185.42	
		7.10-7.50	180.34-190.50	
		7.40-7.80	187.96-198.12	
8"	3", 4", 6", 8"	7.90-8.30	200.66-210.82	Iron pipe size PVC; C900 Cast Iron O.D. PVC; Cast iron 100-250 A, B, C, D; Ductile Iron; AC 100, 150, 200
		8.62-9.06	218.95-230.12	
		9.04-9.45	229.62-240.03	
		9.20-9.60	233.68-243.84	
10"	3", 4", 6", 8", 10"	9.60-10.00	243.84-254.00	Iron pipe size PVC; C900 Cast Iron O.D. PVC; Cast iron 100-250 A, B, C, D; Ductile Iron; AC 100, 150, 200
		9.90-10.30	251.46-261.62	
		10.73-11.13	272.54-282.70	
		11.05-11.45	280.67-290.83	
12"	3", 4", 6", 8", 10", 12"	11.70-12.10	297.18-307.34	C900 Cast Iron O.D. PVC; Cast Iron 100-250 A, B, C, D; Ductile Iron; AC 100, 150, 200; C905 IPS O.D. PVC (14")
		12.00-12.40	304.80-314.96	
		12.50-12.90	317.50-327.66	
		12.75-13.20	332.85-335.28	
14"	4", 6", 8", 10", 12"	13.16-13.56	334.26-344.42	C905 Cast Iron O.D. PVC; Cast Iron 100-250 A, B, C, D; Ductile Iron; AC 100, 150, 200; C905 IPS O.D. PVC (16")
		13.60-14.09	345.44-378.46	
		14.10-14.58	358.14-370.33	
		15.25-15.65	387.35-397.51	
16"	4", 6", 8", 10", 12"	15.60-16.00	396.24-406.40	C905 Cast Iron O.D. PVC; Cast Iron 100-250 A, B, C, D; Ductile Iron; AC 100, 150, 200; C905 IPS O.D. PVC (18")
		16.38-16.73	416.05-424.94	
		16.48-16.88	418.59-428.75	
		17.40-17.80	441.96-452.12	
18"	4", 6", 8", 10", 12"	17.54-17.94	334.26-344.42	C905 Cast Iron O.D. PVC; Cast Iron 100-250 A, B, C, D; Ductile Iron; AC 100, 150, 200; C905 IPS O.D. PVC (20")
		17.85-18.25	445.52-463.55	
		18.15-18.55	461.01-471.17	
		18.60-19.00	472.44-482.60	
20"	4", 6", 8", 10", 12"	19.30-19.70	490.22-500.38	C905 Cast Iron O.D. PVC; Cast Iron 100-250 A, B, C, D; Ductile Iron; AC 100, 150, 200; C905 IPS O.D. PVC (22")
		19.70-20.10	500.38-510.54	
		21.40-21.80	543.56-553.72	
24"	4", 6", 8", 10", 12"	21.90-22.30	556.26-566.42	C905 Cast Iron O.D. PVC; Cast Iron 100-250 A, B, C, D; Ductile Iron
		22.30-22.70	566.42-576.58	
		23.30-23.70	591.82-601.98	
24"	4", 6", 8", 10", 12"	23.80-24.10	604.52-612.14	C905 cast iron O.D. PVC; Cast Iron 100-250 A, B, C, D; Ductile Iron
		25.60-26.00	650.24-660.40	

# STAINLESS STEEL TAPPING SLEEVE - 4" - 24"



# 12.6A

Shaded area indicates change Rev. 4-14



Nominal Size		Dimensions*					Bolts Per Side
		Outlet Flange†		Sleeve			
Main	Outlet	A	B	C	D	E	F
4"	4"	5.0315	.25	7.00	15	4.50	4
6"	4"	5.0315	.25	7.50	15	4.50	4
6"	6"	7.0315	.31	8.00	15	6.50	4
8"	4"	5.0315	.25	8.50	15	4.50	4
8"	6"	7.0315	.31	9.00	15	6.50	4
8"	8"	9.0315	.31	9.50	18	8.50	6
10"	4"	5.0315	.25	10.00	15	4.50	4
10"	6"	7.0315	.31	10.50	15	6.50	4
10"	8"	9.0315	.31	11.00	18	8.50	6
10"	10"	11.0315	.31	11.50	24	10.50	8
12"	4"	5.0315	.25	12.00	15	4.50	4
12"	6"	7.0315	.31	12.00	15	6.50	4
12"	8"	9.0315	.31	12.00	18	8.50	6
12"	10"	11.0315	.31	12.00	24	10.50	8
12"	12"	13.0315	.31	12.00	30	12.50	8
14"	4"	5.0315	.25	13.63	15	4.50	4
14"	6"	7.0315	.31	13.63	15	6.50	4
14"	8"	9.0315	.31	13.63	18	8.50	6
14"	10"	11.0315	.31	13.63	24	10.50	8
14"	12"	13.0315	.31	13.63	30	12.50	8
16"	4"	5.0315	.25	14.59	15	4.50	4
16"	6"	7.0315	.31	14.59	15	6.50	4
16"	8"	9.0315	.31	14.59	18	8.50	6
16"	10"	11.0315	.31	14.59	24	10.50	8
16"	12"	13.0315	.31	14.59	30	12.50	8
18"	4"	5.0315	.25	16.00	15	4.50	4
18"	6"	7.0315	.31	16.00	15	6.50	4
18"	8"	9.0315	.31	16.00	18	8.50	6
18"	10"	11.0315	.31	16.00	24	10.50	8
18"	12"	13.015	.31	16.00	30	12.50	8
20"	4"	5.0315	.25	16.88	15	4.50	4
20"	6"	7.0315	.31	16.88	15	6.50	4
20"	8"	9.0315	.31	16.88	18	8.50	6
20"	10"	11.0315	.31	16.88	24	10.50	8
20"	12"	13.0315	.31	16.88	30	12.50	8
24"	4"	5.0315	.25	19.00	24	4.50	8
24"	6"	7.0315	.31	19.00	24	6.50	8
24"	8"	9.0315	.31	19.00	24	8.50	8
24"	10"	11.0315	.31	19.00	24	10.50	8
24"	12"	13.0315	.31	19.00	30	12.50	10

\* All dimensions are in inches.

†With MJ option, this flange is replaced by an integral SS outlet pipe extension and MJ gland welded permanently in place allowing the sleeve to bolt directly to the outlet of any standard MJ valve. Dimensions for MJ option are compatible with standard connections, and A and B dimensions in chart do not apply.

Rev. 5-18 Shaded area indicates changes



H-306CS shown



H-306MJ shown

- Catalog number-- **H-306** Fabricated Steel Tapping Sleeve
- Sizes - 4"-16" main and outlet (see chart below for available size combinations)
- Outlet choices: flange or integral MJ outlet
- Outlet flange material is carbon steel: outlet flange meets or exceeds all applicable requirements of ANSI B16.1, class 125 and in accordance with MSS-SP60
- Integral MJ flange is carbon steel
- Certified to ANSI/NSF 61
- 3/4" NPT brass test plug
- 4"-12" sizes--300 psig (1725 kPa/17 barg) maximum working pressure
- 14"-16" sizes--250 psig (1375 kPa/14 barg) maximum working pressure

**How to determine a Mueller Tapping Sleeve Part Number**

Select the appropriate numbers from the pipe information chart that follows. Example: For 6"x6" with 6.86-7.16 O.D. Range and stainless steel flange. Resulting Part No. **0606H306CS0716**

Main size	Outlet size	Model Number	Flange Material	Maximum O.D.
06	06	H-306*	CS**	0716

\*\* H-306 is constant for all Mueller Fabricated Steel Tapping Sleeves listed here  
CS = carbon steel flange, MJ=integral mechanical joint outlet.\*

### Tapping Sleeve pipe information

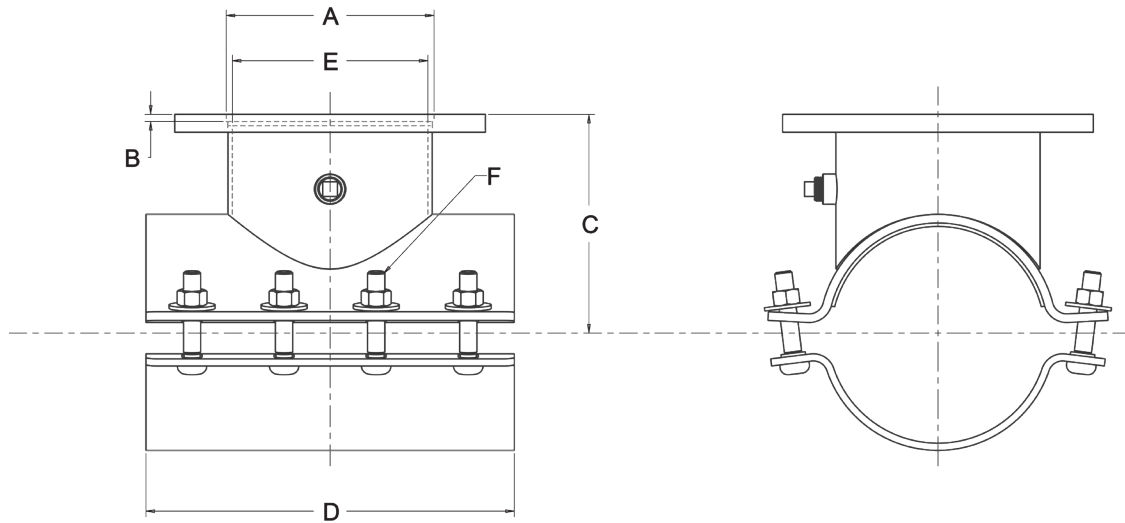
Size of Main	Size of Outlet Flange	Available O.D. Ranges	
		in.	mm
4"	3" & 4"	4.50	114.30
		4.80	117.92
6"	3", 4", 6"	6.57-6.73	166.88-170.94
		6.86-7.16	174.24-181.86
		7.10-7.40	180.34-187.96
		7.43-7.73	188.72-196.34
8"	3", 4", 6", 8"	8.46-8.75	214.88-222.25
		8.82-9.12	224.03-231.65
		9.07-9.37	230.38-238.00
		9.39-9.69	238.51-246.13
		9.95-10.25	252.73-260.35
10"	3", 4", 6", 8", 10"	10.64-10.86	270.26-275.84
		10.95-11.25	278.13-285.75
		11.17-11.47	283.72-291.34
		11.50-11.80	292.10-299.72
		11.64-11.94	295.66-303.28
12"	3", 4", 6", 8", 10", 12"	11.94-12.24	303.28-310.90
		12.58-12.88	319.53-327.15
		13.05-13.35	331.47-339.09
		13.30-13.60	337.82-345.44
		13.79-14.09	350.27-357.89
14"	3, 4", 6", 8", 10", 12"	14.28-14.58	362.71-370.33
		14.78-15.08	375.41-383.03
		15.15-15.45	384.81-392.43
		15.42-15.72	391.67-399.29
		15.62-15.92	396.75-404.37
16"	3", 4", 6", 8", 10", 12"	15.92-16.22	404.37-411.99
		16.15-16.45	410.21-417.83
		16.43-16.73	417.32-424.94
		16.68-16.98	423.67-431.29
		16.96-17.26	430.78-438.40
		17.27-17.57	438.66-446.28
		17.57-17.87	446.28-453.90
17.83-18.13	452.88-460.50		
		18.13-18.43	460.50-468.12

Pipe O.D. Chart		
Size of Main	IPS	DI/C900/C905
4"	4.50	4.80
6"	6.625	6.90
8"	8.625	9.05
10"	10.75	11.10
12"	12.75	13.20
14"	14.00	15.30
16"	16.00	17.40

For other pipe O.D. information reference chart on catalog page 19.15



# H-306 FABRICATED STEEL TAPPING SLEEVE - 4" - 16"



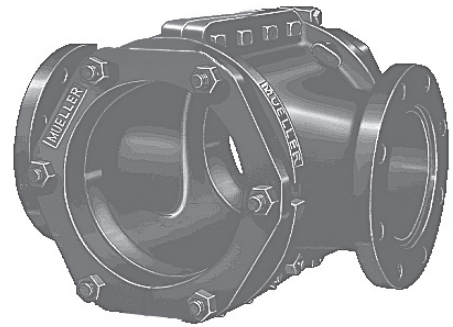
Nominal Size		Dimensions*					Bolts Per Side
		Outlet Flange†		Sleeve			
Main	Outlet	A	B	C	D	E	F
4"	3"	4.0315	0.25	7.00	12	3.50	3
	4"	5.0315	0.25	7.00	12	4.50	3
6"	3"	4.0315	0.25	7.50	12	3.50	3
	4"	5.0315	0.25	7.50	12	4.50	3
	6"	7.0315	0.31	8.00	12	6.50	3
8"	3"	4.0315	0.25	8.50	12	3.50	3
	4"	5.0315	0.25	8.50	12	4.50	3
	6"	7.0315	0.31	9.00	12	6.50	3
	8"	9.0315	0.31	9.50	16	8.50	4
10"	3"	4.0315	0.25	10.00	12	3.50	3
	4"	5.0315	0.25	10.00	12	4.50	3
	6"	7.0315	0.31	10.50	12	6.50	3
	8"	9.0315	0.31	11.00	16	8.50	4
	10"	11.0315	0.31	11.50	20	10.50	5
12"	3"	4.0315	0.25	12.00	12	3.50	3
	4"	5.0315	0.25	12.00	12	4.50	3
	6"	7.0315	0.31	12.00	12	6.50	3
	8"	9.0315	0.31	12.00	16	8.50	4
	10"	11.0315	0.31	12.00	20	10.50	5
	12"	13.0315	0.31	12.00	24	12.50	6
14"	3"	4.0315	0.25	13.63	12	3.50	3
	4"	5.0315	0.25	13.63	12	4.50	3
	6"	7.0315	0.31	13.63	12	6.50	3
	8"	9.0315	0.31	13.63	16	8.50	4
	10"	11.0315	0.31	13.63	20	10.50	5
	12"	13.0315	0.31	13.63	24	12.50	6
16"	3"	4.0315	0.25	14.59	12	3.50	3
	4"	5.0315	0.25	14.59	12	4.50	3
	6"	7.0315	0.31	14.59	12	6.50	3
	8"	9.0315	0.31	14.59	16	8.50	4
	10"	11.0315	0.31	14.59	20	10.50	5
	12"	13.0315	0.31	14.59	24	12.50	6

\* All dimensions are in inches.

†With MJ option, this flange is replaced by an integral SS outlet pipe extension and MJ gland welded permanently in place allowing the sleeve to bolt directly to the outlet of any standard MJ valve. Dimensions for MJ option are compatible with standard connections, and A and B dimensions in chart do not apply.

Rev. 7-17 Shaded area indicates changes

- Catalog number  
**H-715** Mechanical Joint Tapping Cross - with Duck Tipped end gaskets
- Sizes--4"-24" main and outlet (see chart below for available size combinations)
- Outlet flange drilling complies with ASME/ANSI B16.1 class 125, B16.42 class 150 and with MSS SP-60
- Ductile Iron body with 3/4" NPT test plug
- 4"-12" sizes--200 psig (1375 kPa/14 barg) maximum working pressure
- 14" - 24" sizes--150 psig (1100 kPa/11 barg) maximum working pressure



H-715 shown

### Tapping Cross pipe information

Nominal size of main	O.D. Range of sleeve		Class and type of pipe	End Gasket part number
	Inch	mm		
4"	4.74"-4.86"	120.5-123.3	Cast iron classes 100, 150, 200 & A - all classes of ductile iron - cast iron O.D. PVC plastic pipe classes 150 & 200	195824
	4.87"-5.32"	123.8-135.0	Cast iron classes B, C, & D - A-C classes 100 & 150	195653
6"	6.84"-6.96"	173.8-176.7	Cast iron classes 100, 150, 200 & A - all classes of ductile iron - cast iron O.D. PVC plastic pipe classes 150 & 200	195825
	6.97"-7.40"	177.1-187.9	Cast iron classes B, C, & D - A-C classes 100 & 150	195654
8"	8.99"-9.11"	228.4-231.3	Cast iron classes 100, 150, 200, & A & B - all classes of ductile iron - cast iron O.D. PVC plastic pipe classes 150 & 200	195826
	9.12"-9.62"	231.7-244.2	Cast iron classes B, C, & D - A-C classes 100 & 150	195655
10"	11.04"-11.16"	280.5-283.4	Cast iron classes 100, 150, 200, & A & B - all classes of ductile iron - cast iron O.D. PVC plastic pipe classes 150 & 200	194680
12"	13.14"-13.26"	333.9-336.7	Cast iron classes 100, 150, 200, & A & B - all classes of ductile iron - cast iron O.D. PVC plastic pipe classes 150 & 200	194638
14"	15.22"-15.35"	386.7-389.8	Cast iron classes 50, 100, 150, 200, 250, A & B - all classes of ductile iron	195127
16"	17.32"-17.45"	440.0-443.1	Cast iron classes 50, 100, 150, 200, 250, A & B - all classes of ductile iron	195128
18"	19.42"-19.55"	493.4-496.5	Cast iron classes 50, 100, 150, 200, 250, A & B - all classes of ductile iron	195266
20"	21.52"-21.65"	546.7-549.8	Cast iron classes 50, 100, 150, 200, 250, A & B - all classes of ductile iron	195129
24"	25.72"-25.85"	653.4-656.5	Cast iron classes 50, 100, 150, 200, 250, A & B - all classes of ductile iron	195130

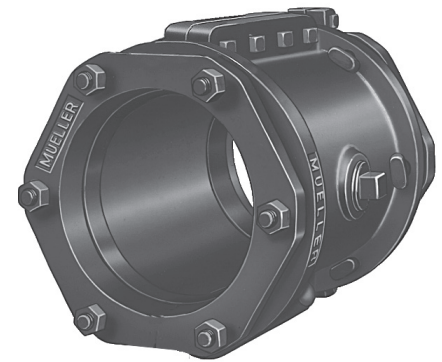
### Sizes available

Nominal size of main	Outlet size									
	4"	6"	8"	10"	12"	14"	16"	18"	20"	24"
4"	X	-	-	-	-	-	-	-	-	-
6"	X	X	-	-	-	-	-	-	-	-
8"	X	X	X	-	-	-	-	-	-	-
10"	X	X	X	X	-	-	-	-	-	-
12"	X	X	X	X	X	-	-	-	-	-
14"	-	X	X	X	X	X	-	-	-	-
16"	X	X	X	X	X	X	X	-	-	-
18"	X	X	X	X	X	-	X	X	-	-
20"	X	X	X	X	X	X	X	X	X	-
24"	X	X	X	X	X	X	X	X	X	X

# MECHANICAL JOINT SPLIT REPAIR SLEEVE FOR CENTRIFUGAL CAST, C.I., D.I., & PVC PIPE

Shaded area indicates change Rev. 7-16

- Catalog number  
**H-785** Mechanical Joint Split Repair Sleeve - with Duck Tipped end gasket
- Sizes --4" through 24" (see chart below for sizes, O.D. ranges and sleeve lengths)
- Mechanical joint ends with duck-tipped end gaskets
- Ductile Iron body with 3/4" NPT test plug
- 4"-12" sizes--250 psig (1725 kPa/17 barg) maximum working pressure
- 14" - 24" sizes--150 psig (1100 kPa/11 barg) maximum working pressure



H-785 shown

## Tapping Sleeve pipe information

Nominal size of main	Sleeve length**	O.D. Range of sleeve		Class and type of pipe	End Gasket Part Number
		Inch	mm		
4"	11-1/2"	4.47-4.86	120.5-123.3	Cast iron classes 100, 150, 200 and A - all classes ductile iron - cast iron O.D. PVC plastic pipe classes 150 and 200	195824
		4.87-5.32	123.8-135.0	Cast iron classes B, C, and D - A-C classes 100 and 150	195653
6"	13-1/2"	6.84-6.96	173.8-176.7	Cast iron classes 100, 150, 200 and A - all classes ductile iron - cast iron O.D. PVC plastic pipe classes 150 and 200	195825
		6.97-7.40	177.1-187.9	Cast iron classes B, C, and D - A-C classes 100 and 150	195654
8"	15-1/2"	8.99-9.11	228.4-231.3	Cast iron classes 100, 150, 200 and A - all classes ductile iron - cast iron O.D. PVC plastic pipe classes 150 and 200	195826
		9.12-9.62	231.7-244.2	Cast iron classes B, C, and D - A-C classes 100 and 150	195655
10"	17-1/2"	11.04-11.16	280.5-283.4	Cast iron classes 150, 200, 250, A, and B - all classes ductile iron - cast iron O.D. PVC plastic pipe classes 150 and 200	194680
12"	19-1/2"	13.14-13.26	333.9-336.7	Cast iron classes 150, 200, 250, A, and B - all classes ductile iron - cast iron O.D. PVC plastic pipe classes 150 and 200	194638
14"	22-1/2"	15.22-15.35	386.7-389.8	Cast iron classes 50, 100, 150, 200, 250, A and B - all classes ductile iron	195127
16"		17.32-17.45	440.0-443.1	Cast iron classes 50, 100, 150, 200, 250, A and B - all classes ductile iron	195128
18"		19.42-19.55	493.4-496.5	Cast iron classes 50, 100, 150, 200, 250, A and B - all classes ductile iron	195266
20"		21.52-21.65	546.7-549.8	Cast iron classes 50, 100, 150, 200, 250, A and B - all classes ductile iron	195129
24"		25.72-25.85	653.4-656.5	Cast iron classes 50, 100, 150, 200, 250, A and B - all classes ductile iron	195130

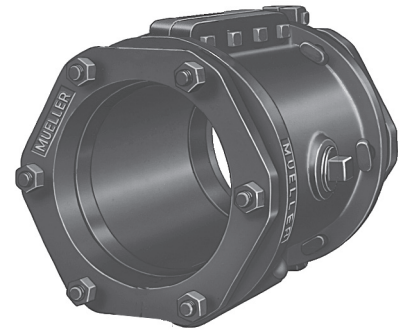
\*\*This length does not include end glands or bolts.



**WARNING:** Use on A-C pipe, which contains a known carcinogen, requires appropriate protective equipment and procedures be employed.

Rev. 7-16 Shaded area indicates changes

- Catalog number  
**H-786** Mechanical Joint Split Repair Sleeve - with plain rubber gasket
- Sizes--10" through 24" (see chart below for sizes, O.D. ranges, sleeve lengths)
- Mechanical joint ends with plain rubber end gaskets
- Ductile Iron body with 3/4" NPT test plug
- 10"-12" sizes--200 psig (1325 kPa/14 barg) maximum working pressure
- 14"-24" sizes--150 psig (1100 kPa/11 barg) maximum working pressure



H-786 shown

### Split Repair Sleeve pipe information

Nominal size of main	Sleeve length**	O.D. Range of sleeve		Class and type of pipe	End Gasket Part Number
		Inch	mm		
10"	17-1/2"	11.34-11.46	288.1-291.0	Cast iron classed C & D	194681
12"	19-1/2"	13.44-13.56	341.5-344.3		194642
14"	22-1/2"	15.59-15.71	396.1-398.9		195131
16"		17.74-17.86	450.7-453.5		195132
18"		19.84-20.00	504.1-507.9		195268
20"		21.98-22.14	558.4-562.3		195133
24"		26.24-26.40	666.6-670.5		195134



**Reliable Connections™**

[www.muellercompany.com](http://www.muellercompany.com) • [moreinfo@muellercompany.com](mailto:moreinfo@muellercompany.com)

---

Rev. 5-18 Shaded area indicates changes

- Catalog number  
**T-2361-16** mechanical joint x flanged ends (with mechanical joint unassembled accessories)  
**T-2361-19** mechanical joint x flanged ends (less mechanical joint accessories)
- Sizes - 3", 4", 6", 8", 10", 12"
- Meets or exceeds all applicable requirements of ANSI/AWWA C515 Standard, UL 262 Listed, FM 1120/1130 Approved, and certified to ANSI/NSF 61 & 372
- Flanged end drilling complies with ASME/ANSI B16.1 Class 125 and with MSS SP-60
- Mechanical joint outlet complies with ANSI/AWWA C111 Standard
- Iron body with nominal 10 mils Mueller Pro-Gard™ Fusion Bonded Epoxy Coated interior and exterior surfaces
- Epoxy coating meets or exceeds all applicable requirements of ANSI/AWWA C550 Standard
- Iron wedge, symmetrical and fully encapsulated with molded rubber; no exposed iron
- Non-rising stem (NRS)
- Triple O-ring seal (2 above the thrust collar and 1 below)
- 2" square wrench nut - open left or open right
- 350 psig (2400 kPa/24 barg) maximum working pressure, 700 psig (4800 kPa/48 barg) static test pressure
- UL Listed/FM Approved 350 psig (2400 kPa/24 barg)
- Designed for potable water applications



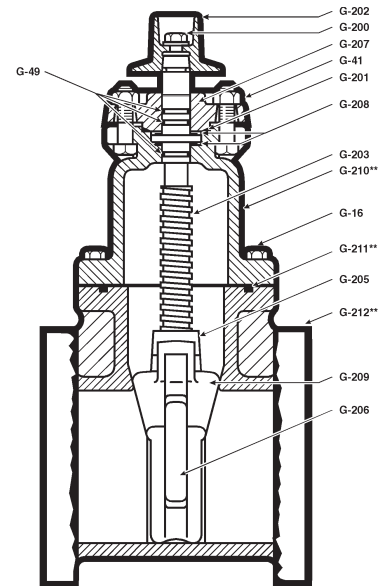
**T-2361-16 shown**  
*M.J. accessories shipped unassembled*

### Options

- Position indicators
- Stainless steel stem: type 304 and type 316
- EPDM disc and o-rings
- Low zinc, silicon bronze ASTM B98-C66100/H02 stem
- Handwheel

### Resilient wedge gate valve parts

Catalog Part Number	Description	Material	Material standard
G-16	Bonnet bolts and nuts	316 Stainless steel	ASTM F593 (bolt) ASTM F594 (nut)
G-41	Stuffing box bolts and nuts	316 Stainless steel	ASTM F593 (bolt) ASTM F594 (nut)
G-49	Stem o-rings (3)	Nitrile	ASTM D2000
G-200	Wrench nut cap screw	316 Stainless steel	ASTM F593
G-201	Stuffing box seal	Nitrile	ASTM D2000
G-202	Wrench nut	Ductile Iron	ASTM A536 ▼
G-203	Stem	Bronze	ASTM B138
G-204	Handwheel (not shown)	Cast Iron +	ASTM A126 CL.B
G-205	Stem nut	Bronze	ASTM B584
G-206	Guide cap bearings	Acetal	-
G-207	Stuffing box with dirt seal	Ductile Iron Rubber	ASTM A536 ▼ ASTM D2000
G-208	Anti-friction washer (2)	Acetal	-
G-209	Wedge Rubber encapsulated	Ductile Iron* SBR	ASTM A536 ▼ ASTM D2000
G-210**	Bonnet	Ductile Iron	ASTM A536 ▼
G-211**	Bonnet O-ring ***	Nitrile	ASTM D2000
G-212**	Body	Ductile Iron	ASTM A536 ▼



\* Fully encapsulated in molded rubber with no iron exposed.

\*\* Previous to 1999 these parts on 4"-12" valves were designed with a gasket instead of an O-ring and with additional bolts. Confirm the type of seal when ordering a replacement gasket or O-ring.

▼ Material strength ASTM A536 65-45 minimum

^ Per ANSI/AWWA C111 working pressure above 250psi requires the use of a special gasket rated for higher pressure.

+ Manufacturer's option to change material to ductile iron ASTM A536

++ 3" valves meet or exceed all applicable requirements of ANSI/AWWA C509 standard

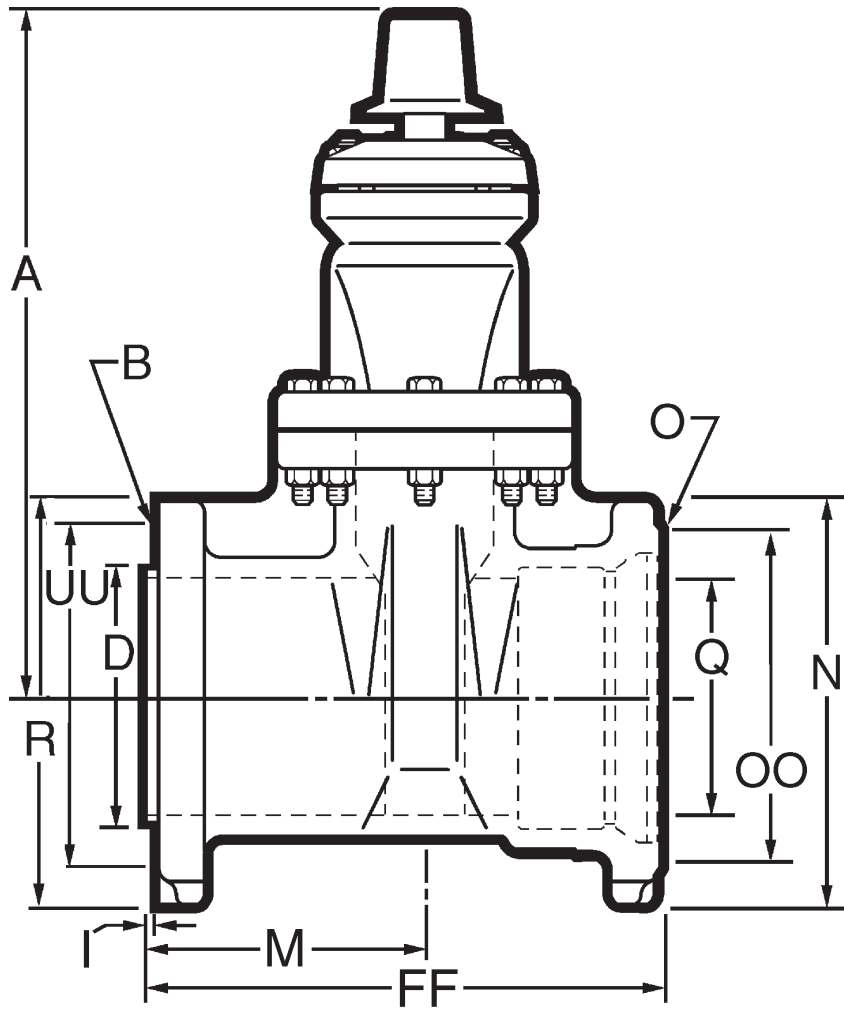
\*\*\* 3" valves use a bonnet gasket

# 3"-12" T-2361 RESILIENT WEDGE TAPPING VALVES - M.J. X FL. ENDS



# 12.13

Shaded area indicates change Rev. 5-18



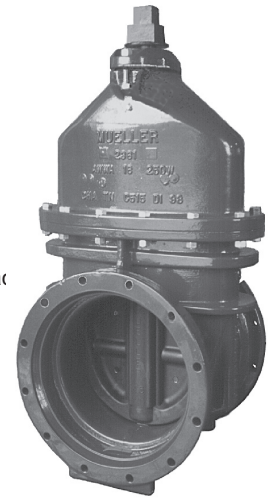
## Dimensions

Dimensions*	Nominal Size					
	3"	4"	6"	8"	10"	12"
A	12.38	14.19	18.0	21.50	25.50	28.62
R	7.50	9.00	11.00	13.50	16.00	19.00
D	3.97	5.00	7.00	9.00	11.00	13.00
I	0.18	0.18	0.25	0.25	0.25	0.25
M	4.73	6.24	6.75	7.75	8.52	7.25
UU (bolt circle diameter)	6.19	7.50	9.50	11.75	14.25	17.00
N	7.50	9.12	11.12	13.38	15.68	17.94
B (number and size of holes for FL)	4--.75	8--.75	8--.88	8--.88	12--1.00	12--1.00
Q (bore)	3.30	4.30	6.30	8.30	10.30	12.30
FF	8.99	9.82	11.43	12.46	14.31	14.87
O (number and size of holes for MJ)	4--.75	4--.88	6--.88	6--.88	8--.88	8--.88
OO (bolt circle diameter)	6.19	7.50	9.50	11.75	14.00	16.25
Turns to open	11	14	20.5	26.5	33	38.5
Weight*	66	82	138	200	302	400

\* All dimensions are in inches. All weights include accessories are in pounds and approximate.

Rev. 7-18 Shaded area indicates changes

- Catalog number--  
**T-2361-16** mechanical joint x flanged ends (with mechanical joint unassembled accessories)  
**T-2361-19** mechanical joint x flanged ends (less mechanical joint accessories)
- Size-- 14", 16"††, 18", 20", 24", 30", 36", 42", 48"
- Meets or exceeds all applicable requirements of ANSI/AWWA C515 Standard, UL 262 Listed, FM 1120/1130 Approved, and certified to ANSI/NSF 61 & 372
- Flanged end drilling complies with ASME/ANSI B16.1 Class 125 and with MSS SP-60
- Mechanical joint end complies with ANSI/AWWA C111 Standard
- Ductile iron body with nominal 10 mils Mueller Pro-Gard™ Fusion Bonded Epoxy Coated interior and exterior surface and 48" valves coated with HP epoxy
- Epoxy coating meets or exceeds all applicable requirements of ANSI/AWWA C550 Standard
- Ductile iron wedge, symmetrical and fully encapsulated with molded rubber; no exposed iron
- Non-rising stem (NRS)
- Triple O-ring seal (2 above the thrust collar and 1 below)
- 2" square wrench nut – open left or open right 30"-48" require a Spur Gear or Beval Gear
- 250 psig (1725 kPa/17 barg) maximum working pressure, 500 psig (3400 kPa/34 barg) static test pressure
- 14" and 16" UL Listed: FM Approved 250 psig (1725 kPa/17 barg)
- 18", 20" and 24" sizes – UL Listed/FM Approved: 175 psig (1200 kPa/12 barg); FM approved 250 psig (1725 kPa/ 17 barg)
- Designed for potable water applications



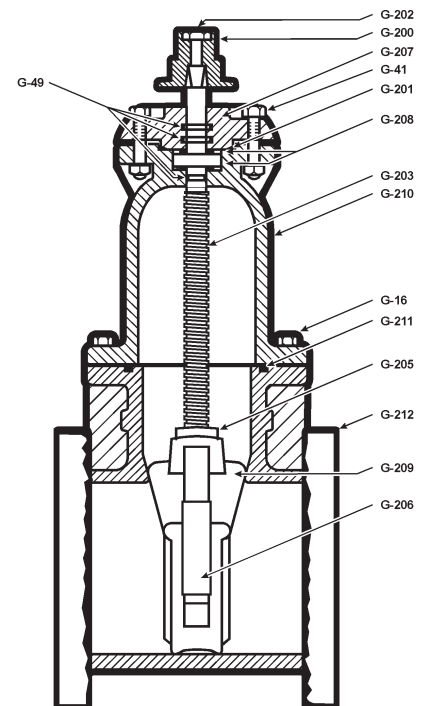
**T-2361-16 shown**  
*M.J. accessories shipped unassembled*

### Options

- Low zinc, silicon bronze ASTM B98-C66100/H02 stem; 14"-16" and ASTM B763-C99500; 18"-48"
- Bypass 18"-48" (2" on 18"-20"; 2.5" on 24"; 3" on 30"-48")
- Bypass 3" on 30"-36"; 4" on 42"-48"
- Position indicators
- EPDM disc and o-rings (14"-16" option, 18"-48" standard)
- Spur or Beval Geared actuator
- Stainless steel stem: Type 304, Type 316

### Resilient wedge gate valve parts

Catalog Part Number	Description	Material	Material standard
G-16	Bonnet bolts and nuts***	316 Stainless steel	ASTM F593 (bolt) ASTM F594 (nut)
G-41	Stuffing box bolts and nuts***	316 Stainless steel	ASTM F593 (bolt) ASTM F594 (nut)
G-49	Stem o-rings (3)†	Nitrile †	ASTM D2000
G-200	Wrench nut cap screw	316 Stainless steel	ASTM F594
G-201	Stuffing box o-ring seal†	Nitrile †	ASTM D2000
G-202	Wrench nut	Cast Iron +++	ASTM A126 CL.B
G-203	Stem	Bronze	ASTM B138**
G-204	Handwheel (not shown)	Cast Iron +++	ASTM A126 CL.B
G-205	Stem nut	Bronze	ASTM B62
G-206	Guide cap bearings	Acetal	-
G-207	Stuffing box	Ductile Iron	ASTM A536 ▼
G-208	Anti-friction washer (2)	Acetal	-
G-209	Wedge Rubber encapsulated	Ductile Iron* SBR†	ASTM A536 ▼ ASTM D2000
G-210**	Bonnet	Ductile Iron	ASTM A536 ▼
G-211**	Bonnet o-ring†	Nitrile †	ASTM D2000
G-212**	Body	Ductile Iron	ASTM A536 ▼



\* Fully encapsulated in molded rubber with no iron exposed

\*\*18" - 48" ASTM B584

†18" - 48" EPDM standard

††Must use 1/2" under size shell cutter

+++ Manufacturers option to change material to Ductile Iron ASTM A536

▼ Material strength ASTM A536 65-45 minimum

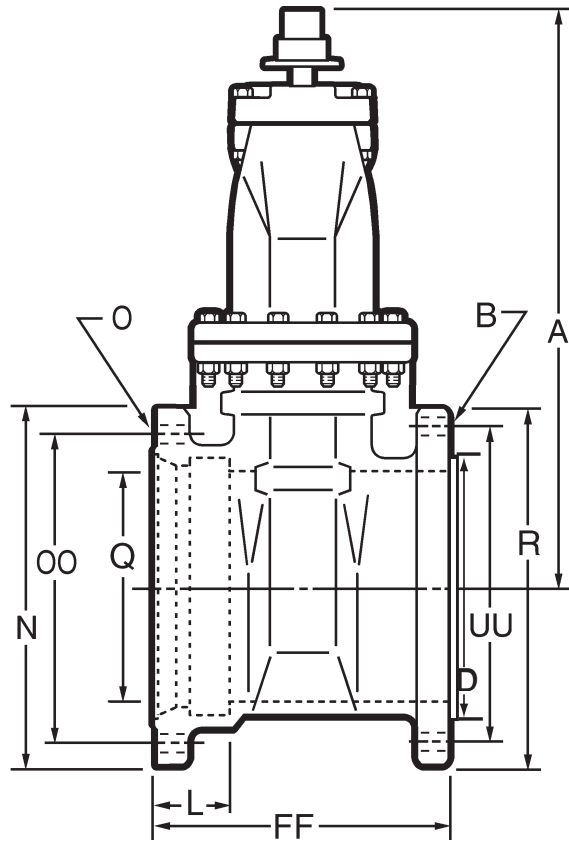


# 14" - 48" T-2361 RESILIENT WEDGE GATE VALVE - D.I. - M.J. X FL. ENDS



# 12.15

Shaded area indicates change Rev. 2-16



## Dimensions

Dimensions*	Nominal Size								
	14"	16"	18"	20"	24"	30"†	36"†	42"†	48"†
A	32.75	37.88	44.19	48.25	53.88	See A for spur or bevel gear			
D	15.25	17.25	19.47	21.47	25.47	30.94	36.94	43.44	49.44
L	3.50	3.50	3.50	3.50	3.50	4.00	4.00	4.00	4.00
N	20.25	22.56	24.76	27.25	31.51	39.53	46.41	53.53	60.41
O (number and size of holes for MJ)	10--.88	12--.88	12--.88	14--.88	16--.88	20--1.25	24--1.25	28--1.38	32--1.38
Q (bore)	14.38	16.00	18.38	20.38	24.38	30.38	36.38	42.38	48.38
OO (bolt circle diameter for MJ)	18.75	21.00	23.25	25.50	30.00	36.88	43.75	50.62	57.50
R	21.00	23.50	25.00	27.50	32.00	38.75	46.00	53.00	59.50
UU (bolt circle diameter for FL)	18.75	21.25	22.75	25.00	29.50	36.00	42.75	49.50	56.00
FF	17.41	17.91	19.25	19.75	21.75	29.75	33.75	40.38	43.79
B	12--1.12	16--1.12	16--1.25	20--1.25	20--1.38	28--1.38	32--1.63	36--1.63	44--1.63
A - spur gear	38.50	43.58	49.41	53.01	59.51	70.81	83.08	97.84	109.70
A - bevel gear**	34.00	37.38	44.50	47.69	54.06	64.93	77.19	90.75	102.61
Turns to open (without gearing)	43.5	48	57	63	75	-	-	-	-
Turns to open (spur gearing)	178	201	234	258	308	381	455	524	596
Turns to open (bevel gearing)	174	196	228††	252††	300††	372	444	524	596
Weight*	655	875	1226	1500	2375	5100	8400	13300	19700

\*All dimensions are in inches. All weights are in pounds and are approximate. Weights for 30"-48" valves are with gearing; for all others without gearing.

\*\*Center line of operating nut to center line of valve.

†Spur or Bevel Gear must be used with 30", 36", 42", 48" valves.

††Turns shown for Master Gear bevel gearing. Valves with Limitorque bevel gearing: 18" - 227, 20" - 251, 24" - 300".

Rev. 5-18 Shaded area indicates changes

- Catalog number  
**T-2362-16** mechanical joint x flanged ends (with mechanical joint unassembled accessories)  
**T-2362-19** mechanical joint x flanged ends (less mechanical joint accessories)
- Sizes - 2", 3", 4", 6", 8", 10", 12"
- Meets or exceeds all applicable requirements of ANSI/AWWA C509 Standard, UL 262 Listed, FM 1120/1130 Approved, and certified to ANSI/NSF 61 & 372
- Flanged end drilling complies with ASME/ANSI B16.1 class 125, B16.42 class 150 and with MSS SP-60
- Mechanical joint outlet complies with ANSI/AWWA C111 Standard
- Iron body with nominal 10 mils Mueller Pro-Gard™ Fusion Bonded Epoxy Coated interior and exterior surfaces
- Epoxy coating meets or exceeds all applicable requirements of ANSI/AWWA C550 Standard
- Iron wedge, symmetrical and fully encapsulated with molded rubber; no exposed iron
- Non-rising stem (NRS)
- Triple O-ring seal (2 above the thrust collar and 1 below)
- 2" square wrench nut - open left or open right
- 350 psig (2400 kPa/24 barg) maximum working pressure, 700 psig (4800 kPa/48 barg) static test pressure
- UL Listed, FM Approved: 350 psig (2400 kPa/24 barg) maximum working pressure
- Designed for potable water applications



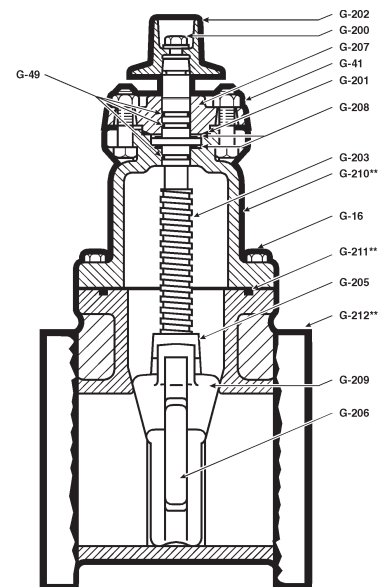
**T-2362-16 shown**  
M.J. accessories  
shipped unassembled

### Options

- Position indicators
- Stainless steel stem: type 304 and type 316
- EPDM disc and o-rings
- Low zinc, silicon bronze ASTM B98-C66100/H02 stem
- Handwheel

### Resilient wedge gate valve parts

Catalog Part Number	Description	Material	Material standard
G-16	Bonnet bolts and nuts	316 Stainless steel	ASTM F593 (bolt) ASTM F594 (nut)
G-41	Stuffing box bolts and nuts	316 Stainless steel	ASTM F593 (bolt) ASTM F594 (nut)
G-49	Stem o-rings (3)	Nitrile	ASTM D2000
G-200	Wrench nut cap screw	316 Stainless steel	ASTM F593
G-201	Stuffing box seal	Nitrile	ASTM D2000
G-202	Wrench nut	Ductile Iron	ASTM A536 ▼
G-203	Stem	Bronze	ASTM B138
G-204	Handwheel (not shown)	Cast Iron +++	ASTM A126 CL.B
G-205	Stem nut	Bronze	ASTM B62
G-206	Guide cap bearings	Acetal	-
G-207	Stuffing box with dirt seal	Ductile iron	ASTM A536 ▼
G-208	Anti-friction washer (2)	Acetal	-
G-209	Wedge Rubber encapsulated	Ductile iron * SBR	ASTM A536 ▼ ASTM D2000
G-210**	Bonnet	Ductile iron	ASTM A536 ▼
G-211**	Bonnet O-ring ++	Neoprene	ASTM D2000
G-212**	Body	Ductile iron	ASTM A536 ▼



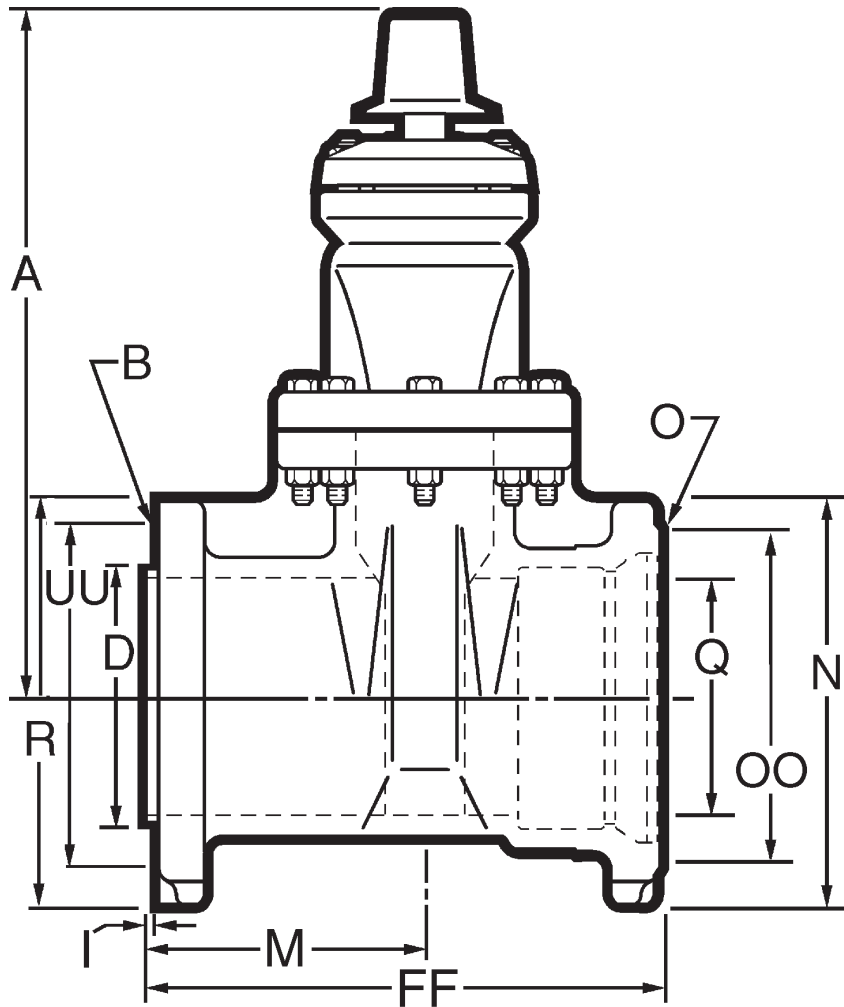
\* Fully encapsulated in molded rubber with no iron exposed,  
+++ Manufacturers option to change material to Ductile Iron ASTM A536  
▼ Material strength ASTM A536 65-45 minimum  
++ 2"-3" valves use bonnet gaskets

**2"-12" T-2362 RESILIENT WEDGE  
TAPPING VALVES - M.J. X FL. ENDS**



**12.17**

Shaded area indicates change Rev. 2-17



**Dimensions**

Dimensions*	Nominal Size						
	2"	3"	4"	6"	8"	10"	12"
A	9.88	12.38	14.19	18.00	21.50	22.50	28.62
R	6.00	7.50	9.00	11.00	13.50	16.00	19.00
D	2.97	3.97	5.00	7.00	9.00	11.00	13.00
I	0.16	0.18	0.18	0.25	0.25	0.25	0.25
M	4.46	4.73	6.24	6.75	7.50	8.44	8.26
UU (bolt circle diameter)	4.75	6.00	7.50	9.50	11.75	14.25	17.00
N	6.25	7.50	9.12	11.12	13.38	15.68	17.94
B (number and size of holes for FL)	4--.75	4--.75	8--.75	8--.88	8--.88	12--1.0	12--1.0
Q (bore)	2.30	3.30	4.30	6.30	8.30	10.30	12.30
FF	8.55	8.99	11.91	13.00	14.75	15.80	16.26
O (number and size of holes for MJ)	4--.75	4--.75	4--.88	6--.88	6--.88	8--.88	8--.88
OO (bolt circle diameter)	4.75	6.19	7.50	9.50	11.75	14.00	16.25
Turns to open	8	11	14	20.5	26.5	33	38.5
Weight*	44	66	109	175	272	417	541

\* All dimensions are in inches. All weights include accessories are in pounds and approximate.

Rev. 2-18 Shaded area indicates changes

- Catalog number--  
T-2380 flanged x mechanical joint with M.J. accessories
- Sizes--14", 16", 18", 20", 24"
- Meets or exceeds all applicable requirements of ANSI/AWWA C500 Standard,
- Certified to ANSI/NSF 61.
- Designed for potable water applications
- 150 psig rated working pressure

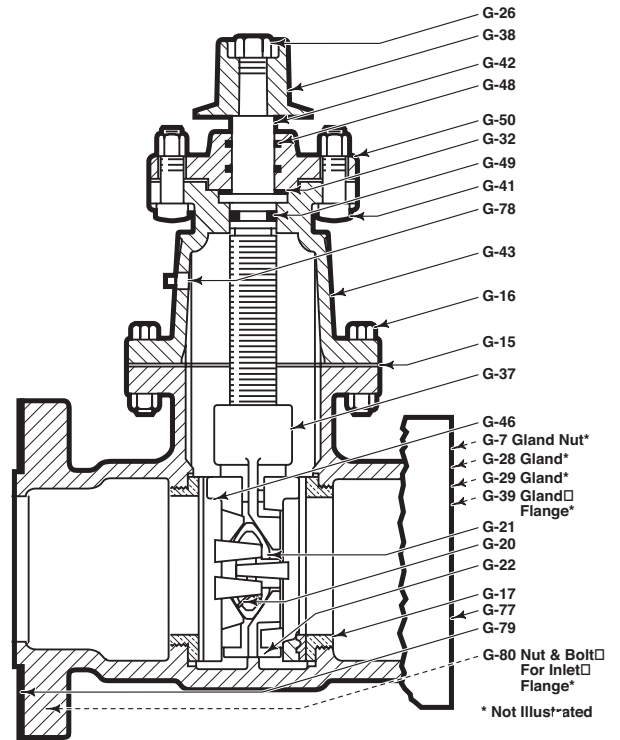
### Options

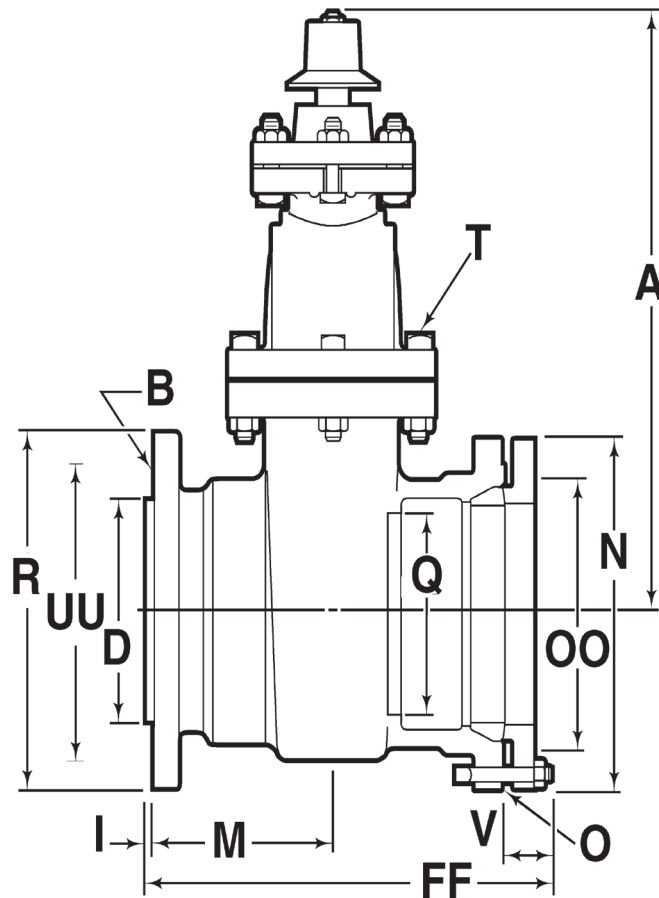
- Bevel or spur gearing; 16"-24"
- Position indicators; 14"-16"
- Epoxy Coating
- Handwheel
- Low zinc, silicon bronze ASTM B98-C66100/H02 Stem and disc pins; ASTM B763-C99500 Stem 18"-36"

### Double-disc Tapping Valve parts

Catalog Part Number	Description	Material	Material Standard
G-15	Bonnet gasket	Composition	ASTMD1170
G-16	Bonnet bolts & nuts	316 Stainless steel	ASTM F593 (bolt) ASTM F594 (nut)
G-17	Seat ring	Bronze	ASTM B62
G-46	Disc and disc ring	Cast iron**	ASTM A126 CL.B
G-20	Disc pin	Bronze	ASTM B21
G-21	Side spreader	Bronze	ASTM B62
G-22	Bottom wedge	Cast iron	ASTM A126 CL.B
G-78	Test plug	Iron	-
G-26	Nut for wrench nut	316 Stainless steel	ASTM F594
G-32	Stuffing box gasket	Fiber	-
G-37	Top wedge nut	Cast iron**	ASTM A126 CL.B
G-38	Wrench nut	Cast iron	ASTM A126 CL.B
G-41	Stuffing box bolt & nut	316 Stainless steel	ASTM F593 (bolt) ASTM F594 (nut)
G-42	Stem	Bronze	ASTM B138
G-43	Bonnet	Cast iron	ASTM A126 CL.B
G-45	Hand Wheel	Cast iron	ASTM A126 CL.B
G-77	Body	Cast iron	ASTM A126 CL.B
G-48	Suffing box O-ring	Rubber	ASTM D2000
G-49	Stem O-ring	Rubber	ASTM D2000
G-50	Stuffing box	Cast iron	ASTM A126 CL.B
G-79	Inlet flange gasket	Composition	-
G-80	Inlet flange bolts and nuts	Steel	-

\*\* Cast iron discs with rolled-in bronze facings; cast iron top wedge nut with integrally cast bronze busing.





**Dimensions**

Dimensions*	Nominal Size**				
	14"	16"	18"	20"	24"
A	34.13	39	43	47.5	55.75
Q (bore)	14.25	16.25	18.25	20.25	24.25
R	21	23.5	25	27.5	32
D	15.25	17.25	19.47	21.47	25.47
I	0.25	0.25	0.25	0.25	0.25
M	7.50	10.38	11	11.13	12.75
FF	17.89	23.56	24.75	25.13	28.13
V	2.63	3.01	3	2.47	3.47
N	20.31	22.56	24.81	27.01	31.56
T	18	18	20	20	24
B (number and size of bolts for FL)	12--1	16--1	16--1.125	20--1.125	20--1.25
O (number and size of bolts for MJ)	10--.88	12--.75	12--.75	14--.75	16--.75
UU (bolt circle diameter for FL)	18.75	21.25	22.75	25.00	29.50
OO (bolt circle diameter for MJ)	18.75	21.00	23.25	25.50	30.00
Turns to open (without gearing)	46	53	59	67	80
Turns to open (bevel gearing)	NA	212	236	260	308
Turns to open (spur gearing)	NA	217	242	267	316
Weight*	826	1144	1653	2300	3190

\* All dimensions are in inches. All weights include accessories are in pounds and approximate.

\*\* Nominal.

12.20



MUELLER TAPPING MATERIALS  
AND SPECIALTY VALVES

Rev. 3-18 Shaded area indicates changes

---



**Reliable Connections™**

[www.muellercompany.com](http://www.muellercompany.com) • [moreinfo@muellercompany.com](mailto:moreinfo@muellercompany.com)

---

**To order Tapping Valves specify:**

**Quantity**

If more than one size, specify quantity of each

**Size**

Nominal size of valve

**Catalog number**

**Direction of opening**

Specify open left (counter-clockwise) or open right (clockwise). Wrench nuts on valves that open to the right are painted red for identification purposes.

**Method of operation**

Non-rising valves are available with either a 2" square wrench nut or a handwheel. Handwheels are standard on flanged x flanged valves; all other NRS valves have a 2" square wrench nut as standard (24" also has bevel gearing). When ordering NRS valves, specify wrench nut or handwheel.

**Special requirements**

Contact MUELLER Customer Service Center with special requirements such as special paints or coatings, low zinc bronze stems, stainless steel fasteners etc.

**Tapping Valve Repair Parts**

To order repair parts specify size of valve, direction of opening, year date on body, catalog part number, catalog number of valve if known, and type of ends if ordering body.

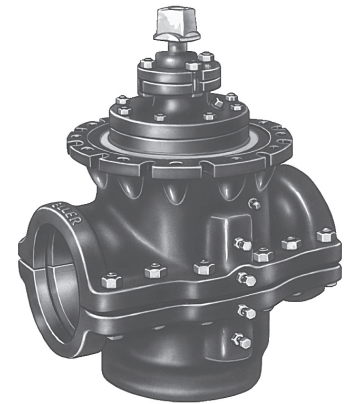
---

Rev. 4-14 Shaded area indicates changes

### Discontinued Item

Please contact your Mueller Customer Service Representative for equipment and parts availability.

- Catalog number--  
**H-800** inserting valve
- Sizes--4", 6", and 8"



H-800 shown

### Inserting Valve basic equipment

Catalog number--  
**H-811**--Basic equipment used with Mueller CL-12 Drilling Machine  
**H-810**--Basic equipment used with Mueller CC-25 Drilling Machine

### Discontinued Item

Please contact your Mueller Customer Service Representative for equipment and parts availability.

### Basic equipment and weights

Part	Part Numbers	
	H-811	H-810
Short adapter	80594	80594
Long adapter	80592	80592
Slide valve	83542	83542
Flange gasket	79740	79740
Flange washer	92576	92576
Flange bolts and nuts	36446	36446
Double end wrench (small)	96536	96536
Double end wrench (large)	58196	58196
Socket wrench (small)	33124	33124
Socket wrench (large)	33125	33125
Ratchet wrench	40233	40233
Ratchet brace	51963	51963
Hex wrench (short)	40327	40327
Hex wrench (long)	33113	33113
Boring bar socket	83780	80601
Guide supports	40280	40280
Grease	90968	90968
Pressure release valve	3/4" H-11055	3/4" H-11055

Catalog number	Weight
H-811	700 lbs.
H-810	700 lbs.



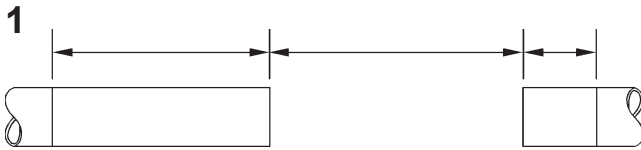


- Catalog numbers--
  - H-840** cut-in sleeve with duck-tipped gasket\*
  - H-842** cut-in sleeve with duck-tipped gasket\* and bonding set screws in gland
  - H-841** cut-in sleeve with plain rubber gasket\*
  - H-843** cut-in sleeve with plain rubber gasket\* and bonding set screws in gland
- Sizes--4",6",8",10", and 12"
- Cast iron construction
- Spigot end corresponds to class 150 ductile iron pipe
- Sleeves are marked with dimensional information to show how much of existing main must be removed for installation of sleeve and valve
- 200 psig (1375 kPa/14 barg) maximum working pressure

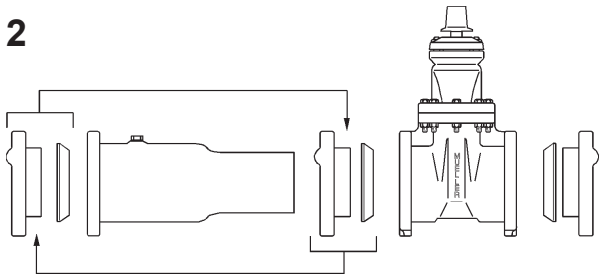
† See page 12.26 for extra gaskets and classes of pipe that cut-in valve will fit.



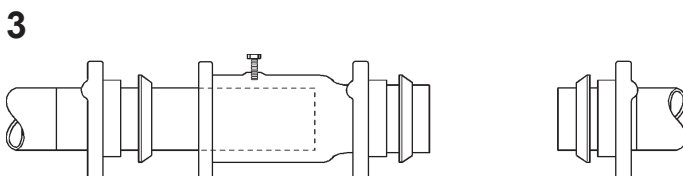
## Fast, simple installation



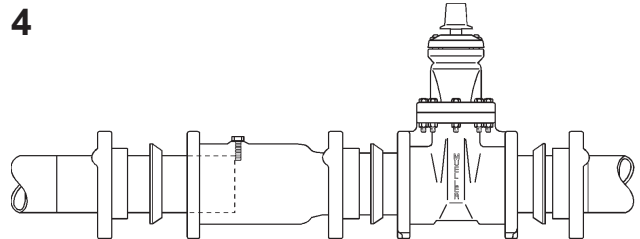
Clean pipe. With water pressure shut off, cut out the appropriate length of main.



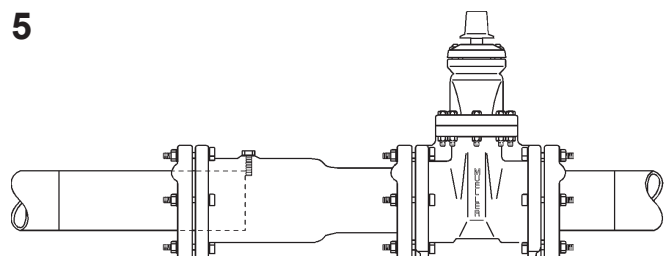
Disassemble the gland and gasket from the sleeve and interchange with the gland and gasket from one end of the cut-in valve.



Back the stop screw out until flush with the inside of the sleeve, and slide the sleeve over the end of pipe. Make sure end of pipe isn't hitting the stop screw.



Position cut-in valve on end of main. Slide sleeve spigot end into end of valve. Tighten stop screw so it clears end of pipe.



Position gaskets and glands. Install all tee-head pipe gland bolts and tighten. Open the cut-in valve and turn on water pressure in main.

Rev. 5-18 Shaded area indicates changes

- Catalog number--
  - C-2362-44** D-150 mechanical joint ends with accessories and duck tipped rubber gaskets†
  - C-2362-45** D-150 mechanical joint ends with accessories and plain tipped rubber gaskets†
  - C-2362-54** D-150 mechanical joint ends with accessories and duck tipped rubber gaskets† and bonding set screws in gland
  - C-2362-55** D-150 mechanical joint ends with accessories and plain tipped rubber gaskets† and bonding set screws in gland
- Sizes-- 4", 6", 8"
- Meets or exceeds all applicable requirements of ANSI/AWWA C509 Standard and is certified to ANSI/NSF 61 & 372
- Iron body with nominal 10 mils Mueller Pro-Gard™ Fusion Bonded Epoxy Coated interior and exterior surfaces
- Epoxy coating meets or exceeds all applicable requirements of ANSI/AWWA C550 Standard
- Iron wedge, symmetrical and fully encapsulated with molded rubber; no exposed iron
- Non-rising stem (NRS)
- Triple O-ring seal (2 upper & 1 lower O-ring)
- 2" square wrench nut - open left or open right
- 4" - 8" sizes--350 psig (2400 kPa/24 barg) maximum working pressure, 700 psig (4800 kPa/48 barg) static test pressure
- Designed for potable water applications



**C-2362-44 shown**  
D-150 M.J. accessories  
shipped unassembled



Cross section of plain tipped rubber gasket.



Cross section of plain tipped rubber gasket.

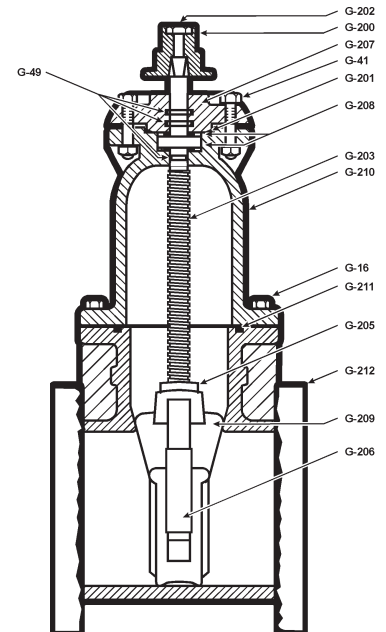
† See page 12.26 for extra gaskets and classes of pipe that cut-in valve will fit.

### Options

- Position indicators
- Stainless steel stem: type 304 and type 316
- EPDM disc and o-rings
- Low zinc, silicon bronze ASTM B98-C66100/H02 stem
- Handwheel

### Resilient Wedge Cut-In Valve Parts

Catalog Part Number	Description	Material	Material Standard
G-16	Bonnet bolts & nuts	316 Stainless Steel	ASTM F593 (bolt) ASTM F594 (nut)
G-41	Stuffing box bolt & nut	316 Stainless Steel	ASTM F593 (bolt) ASTM F594 (nut)
G-49	Stem o-rings (3)	Nitrile	ASTM D2000
G-200	Wrench nut cap screw	316 Stainless Steel	ASTM F593
G-201	Stuffing box seal	Nitrile	ASTM D2000
G-202	Wrench nut	Ductile Iron	ASTM A536 ▼
G-203	Stem	Bronze	ASTM B138
G-204	Handwheel (not shown)	Cast Iron +	ASTM A126 CL.B
G-205	Stem nut	Bronze	ASTM B62
G-206	Guide cap bearings	Acetal	-
G-207	Stuffing box with dirt seal	Ductile Iron	ASTM A536 ▼
G-208	Anti-friction washer (2)	Acetal	-
G-209	Wedge, Rubber encapsulated	Ductile Iron**+ SBR	ASTM A536 ▼ ASTM D2000
G-210***	Bonnet	Ductile Iron	ASTM A536 ▼
G-211***	Bonnet O-ring	Nitrile	ASTM D2000
G-212***	Body	Ductile Iron	ASTM A536 ▼

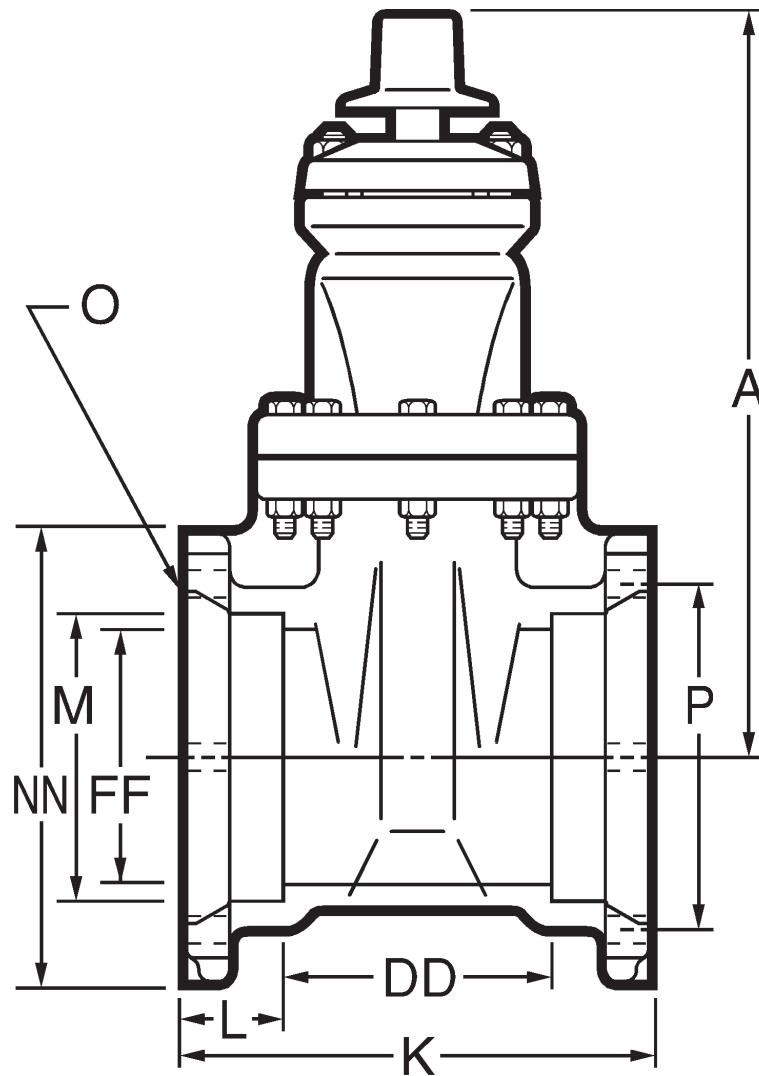


\* Fully encapsulated in molded rubber with no iron exposed

\*\* Previous to 1999 these parts on 4"-8" valves were designed with a gasket instead of an O-ring and with additional bolts. Confirm the type of seal when ordering a replacement gasket or O-ring.

+ Manufacturers option to change material to Ductile Iron ASTM A536

▼ Material strength ASTM A536 65-45 minimum



**Dimensions**

Dimensions*	Nominal Size		
	4"	6"	8"
A	14.19	18.0	21.50
K	10.00	11.50	12.50
L	2.50	2.50	2.50
M	5.17	7.27	9.47
O	4--.88	6--.88	6--.88
P	7.75	9.75	12.125
DD	5.00	6.50	7.50
FF	4.30	6.30	8.30
NN	9.44	11.44	13.81
Turns to open	14	20.5	26.5
Weight*	120	186	280

\* All dimensions are in inches. All weights include accessories are in pounds and approximate.

Rev. 7-18 Shaded area indicates changes

### Extra gaskets for Mueller Cut-in Valves

Mueller Cut-in Valves are furnished with one of two types of gaskets, either duck-tipped or plain rubber. The type of gaskets furnished is determined by the valve catalog number selected.

Each type of gasket is for a specific type and class of pipe. In general for a given nominal size of pipe, duck-tipped gaskets are used with pipe having the smaller outside diameter, while plain rubber gaskets are used with pipe having the larger outside diameter.

For all Mueller Cut-in Valves of a given nominal size, the body and end glands are the same regardless of the type of gaskets furnished. Therefore, one valve with two sets of gaskets (one set each of duck-tipped and plain rubber) will fit all classes of pipe listed below. If there is any question as to the type of pipe involved when using a cut-in sleeve and cut-in valve, **we recommend ordering and stocking cut-in valves with duck-tipped gaskets and separate plain rubber gaskets for each valve.**

### Duck-tipped gaskets for Mueller® Cut-in Sleeves and Valves

#### Duck-tipped gaskets must be used with the following pipe:

Centrifugally cast pipe, classes 50-250  
ANSI A21.6 AWWA C106  
ANSI A21.8 AWWA C108

Pit cast pipe, classes 50-250  
ANSI A21.8 AWWA C102

Ductile iron pipe, classes 50-56  
ASNI A21.51 AWWA C151

Cast iron pipe, AWWA Specification, class A and 8", 10" and 12" class B

Cast iron, old AGA Standard

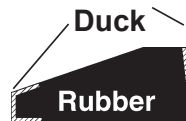
Federal Specifications WW-P-421, classes 150 and 250

Cast iron O.D. PVC pipe, class 200 AWWA C900

### Duck-tipped gaskets

Gasket Part Number	Pipe size*	Approximate pipe O.D.	Approximate pipe circumference
194732	4"	4.80"	15-1/4"
194733	6"	6.90"	21-3/4"
194734	8"	9.05"	28-1/2"
194735	10"	11.10"	35"
194736	12"	13.20"	41-5/8"

\*Nominal



Cross section of duck-tipped rubber

### Plain rubber gaskets for Mueller® Cut-in Sleeves and Valves Plain rubber gaskets must be used with the following pipe:

Cast iron, AWWA Specifications, class C and D, and 4" and 6" class B

#### Gland Packs

#### D-150 Mechanical Joint accessories

Valve size	D-150 Mechanical Gland Joint part number	D-150 Mechanical Gland Joint with bonding screws part number	D-150 plain gasket part number	D-150 Duck-tipped gasket part number
4"	160519	186610	194738	194732
6"	160520	186611	194739	194733
8"	160521	186612	194740	194734
10"	160522	186613	194741	194735
12"	160523	186614	194742	194736

### Plain rubber gaskets

Gasket Part Number	Pipe size*	Approximate pipe O.D.	Approximate pipe circumference
194738	4"	5.00"	15-7/8"
194739	6"	7.10"	22-1/2"
194740	8"	9.30"	29-3/8"
194741	10"	11.40"	36"
194742	12"	13.50"	42-5/8"

\*Nominal



Cross section of plain tipped rubber