



NORANDEX™

EXTERIOR PRODUCTS FOR YOUR HOME

2019

RAINWARE, TRIM COIL & SOFFIT

Lodi Plant

www.acm-metals.com



NORANDEX™

EXTERIOR PRODUCTS FOR YOUR HOME

Rainware Components

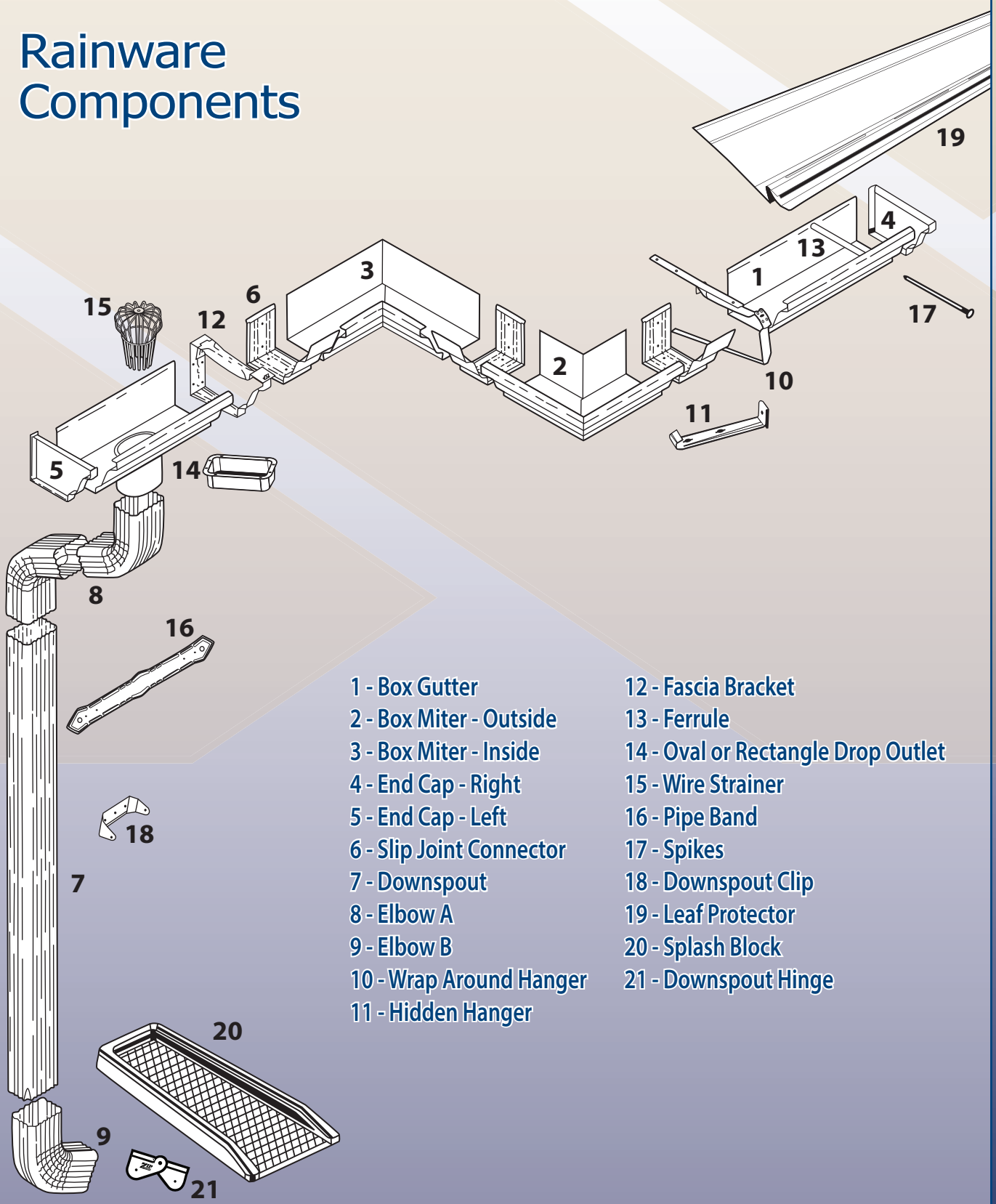




Table of Contents

Gutter Coil Conversion Chart	2	T-Wedge Hangers	17
Gutter Coil	3	Gutter Wedges	17
Spin Down Gutter Coil	4	Wrap Around.....	17
Gutters	5-6	T-Bar	17
End Cap Reference Chart	7	Hanger Straps.....	17
Downspouts	8	Rainware Accessories.....	18
Elbows	9	Ring Shanks.....	18
A & B Elbows	9	Ferrules.....	18
Variable Degree Elbows	9	Round/Half Round Products	19-21
Offsets	10	Half Round Gutters	19
Downspout Accessories.....	11-12	Round Downspouts	19
Leader Heads.....	11	Round Elbows	19
Outlets.....	11	Round Offsets	20
Wire Strainers.....	11	Half Round End Caps.....	20
PVC Adapters.....	11	Half Round Leader Heads.....	20
Y Adapters.....	11	Round & Half Round Outlets	20
Y Diverters	11	Round Leaders Straps	21
Funnels	12	Half Round Miters	21
Leader Straps	12	Half Round Hidden Hangers.....	21
Pipe Bands.....	12	Copper Products.....	22
Downspout Hinges.....	12	Gutter Protection.....	23-25
Splash Blocks.....	12	Drain Guard	23
Miters.....	13	Gutter Protection Screen Systems.....	23-24
Extreme™ Miters	13	Gutter Protection Perforated.....	24
Box Miters	13	& Cover Systems	
Bay Miters	13	Gutter Protection & Accessories	25
Strip Miters.....	13	Trim Coil.....	26
Joints	14	Norandex™.....	26
Expansion Joints.....	14	Mastic	26
Slip Joints.....	14	Hardie	26
End Caps	15	Textured, Mar-Resistant Window Trim Coil...	26
Hangers.....	16-17	Soffit and F-Channel & J-Channel	27
Hidden	16	Hidden Vent Soffit.....	27
Hangers with Screws.....	16	F-Channel.....	27
		J-Channel	27
		Norandex™ Aluminum Warranty	28
		Norandex™ Steel Warranty	29

PROUDLY FINISHED WITH
SHERWIN-WILLIAMS
Coil Coatings

www.acm-metals.com

To place orders for metal products, please call:

Lodi Plant Customer Service: **Ph 877-213-5962 • Fax 608-362-0599**

For siding and window inquiries, please call Norandex™ Corporate Customer Service at **800-528-0942**



Gutter Coil Conversion Chart

(Determining Feet to Weight)

Coil Width	Thickness Material	Conversion Multiplier Formula		
11-3/4"	.027" Alum.	lin. ft. _____	X .377 = _____	# lbs.
11-7/8"	.027" Alum.	lin. ft. _____	X .380 = _____	# lbs.
14"	.027" Alum.	lin. ft. _____	X .453 = _____	# lbs.
15"	.027" Alum.	lin. ft. _____	X .476 = _____	# lbs.
11-3/4"	.032" Alum.	lin. ft. _____	X .446 = _____	# lbs.
11-7/8"	.032" Alum.	lin. ft. _____	X .450 = _____	# lbs.
13"	.032" Alum.	lin. ft. _____	X .500 = _____	# lbs.
15"	.032" Alum.	lin. ft. _____	X .571 = _____	# lbs.
18"	.032" Alum.	lin. ft. _____	X .678 = _____	# lbs.
11-7/8"	26 ga. Steel	lin. ft. _____	X .768 = _____	# lbs.
12"	26 ga. Steel	lin. ft. _____	X .775 = _____	# lbs.
13"	26 ga. Steel	lin. ft. _____	X .839 = _____	# lbs.
14"	26 ga. Steel	lin. ft. _____	X .904 = _____	# lbs.
15"	26 ga. Steel	lin. ft. _____	X .969 = _____	# lbs.
19"	26 ga. Steel	lin. ft. _____	X 1.23 = _____	# lbs.
11-3/4"	16 oz. Copper	lin. ft. _____	X 0.98 = _____	# lbs.
11-7/8"	16 oz. Copper	lin. ft. _____	X 0.99 = _____	# lbs.
15"	16 oz. Copper	lin. ft. _____	X 1.25 = _____	# lbs.

To process an order for a spin down quantity, determine the number of pounds based on the requested footage by the contractor. Enter the number of pounds on the ticket noting the required footage. After spinning down the required coil footage, re-weigh the coil to verify the actual pounds of coil taken out of inventory. Note the actual weight in shipped column of the ticket. Update the tickets to adjust the invoice accordingly. This process ensures proper invoicing and accurate inventory levels.

These coils are cut from master coils which are slightly thicker in the middle to avoid oil canning during the painting process. The gauge can vary slightly depending on where the coil was cut from the master coil. Inventory will vary if the product is sold by footage and not weight. Remember, product is purchased by the pound. Re-weighing is necessary for accuracy.

A NOTE ABOUT COLOR SELECTION

NORANDEX™ provides color chip cards which show a close representation of the color. The purpose of color chip cards is to narrow down the homeowner choice of colors. Depending upon the substrate, the final selection should always be based on either an aluminum or steel color tile fan deck, viewed in full sunlight.

Metallic colors, such as Copper Penny (CP), Bronze (BZ), Rustic Copper (M2), and Weathered Bronze (WB), have mica (refractive) or aluminum (reflective) flakes added to the paint finish. The color of different products may be the same (as measured on a colorimeter), but the visual appearance may look slightly different when viewed from different angles and varying amount of sunlight. This is a normal occurring phenomenon and is due the chance positioning of the mica and aluminum flakes when added to the paint finish.



NORANDEX™ Gutter Coil

LODI PLANT

Gutter Coil



Part #	Description	Colors	Nom. Gauge/ Thickness	Pieces/ Pound
AGC21178 - -	Alum. 11-7/8" Coil	*CP, *FR, *MS, *WH	0.027	Order by the lb.
AGC21178M2	Alum. 11-7/8" Coil	M2 (Premium Color)	0.027	Order by the lb.
AGC278 - - - -	Alum. 11-7/8" Coil	30/30, 50/80, 80/RB, AL/WI, BB/BZ, BU/NW, CC/CA, DS/VG, EG/WH, HC/LI, HG/CG, MR/SP, PC/ST, PH/WH, RB/HV, RB/MB, RS/DM, RW/BK, S7/WH, TA/CU, TB/BB, WB/HV, WB/MB, WH/HV, WT/CA	0.027	Order by the lb.
AGC214WH	Alum. 14" Coil	WH	0.027	Order by the lb.
AGC214 - - - -	Alum. 14" Coil	50/80, AL/WI, BB/BZ, BU/NW, CC/CA, DS/VG, EG/WH, HC/LI, HG/CG, MR/SP, PC/ST, RB/HV, RB/MB, RW/BK, TA/CU, WB/MB	0.027	Order by the lb.
AGC215 - -	Alum. 15" Coil	*CP, *FR, *WH	0.027	Order by the lb.
AGC215M2	Alum. 15" Coil	M2 (Premium Color)	0.027	Order by the lb.
AGC215 - - - -	Alum. 15" Coil	50/80, 80/RB, AL/WI, BB/BZ, BU/NW, CC/CA, DS/VG, EG/WH, HC/LI, HG/CG, MR/SP, PC/ST, PH/WH, RB/HV, RB/MB, RS/DM, RW/BK, S7/WH, TA/CU, TB/BB, WB/HV, WB/MB, WH/HV, WT/CA	0.027	Order by the lb.
AGC31178 - -	Alum. 11-7/8" Coil	AL, BU, BZ, CA, DS, FR, HV, MS, PC, RB, ST, TB, WH, WI	0.032	Order by the lb.
AGC315 - -	Alum. 15" Coil	AL, BU, BZ, CA, DS, FR, HV, MS, PC, RB, ST, TB, WH, WI	0.032	Order by the lb.
AGC318 - - - -	Alum. 18" Coil	BZ/FR, RB/WH	0.032	Order by the lb.
*NOTE: One week extended lead-time for these gutter coil colors.				
GGC612 - - - -	Galv. 12" Coil	BB/WH, CC/WH, CG/HG, DS/WH, EG/WH, HV/WH, PC/WH, RB/WH, RW/BK, VG/WH, WI/WH	26 ga	1,000 Lbs.
GGC613 - - - -	Galv. 13" Coil	BB/WH, CC/WH, CG/HG, DS/WH, HV/WH, PC/WH, RB/WH, RW/BK, VG/WH	26 ga	1,000 Lbs.
GGC614RBWH	Galv. 14" Coil	RB/WH	26 ga	400 Lbs.
GGC154PR	Galv. 15" Coil	Prime	26 ga	400 Lbs.
GGC154HVWH	Galv. 15" Coil	HV/WH	26 ga	400 Lbs.
GGC615WH	Galv. 15" Coil	WH	26 ga	1,000 Lbs.
GGC615 - - - -	Galv. 15" Coil	BB/WH, CC/WH, CG/HG, DS/WH, EG/WH, HV/WH, PC/WH, RB/WH, RW/BK, TA/CU, VG/WH, WI/WH	26 ga	1,000 Lbs.
GGC619WH	Galv. 19" Coil	WH	26 ga	1,000 Lbs.
GGC619 - - - -	Galv. 19" Coil	BB/WH, CC/WH, CG/HG, DS/WH, EG/WH, HV/WH, PC/WH, RB/WH, RW/BK, TA/CU, VG/WH, WI/WH	26 ga	1,000 Lbs.
GGC6E5 - - - -	Galv. 15" Coil "E" Grade	BB/WH, CC/WH, CG/HG, DS/WH, EG/WH, HV/WH, PC/WH, RB/WH, RW/BK, TA/CU, VG/WH, WH/WH, WI/WH	26 ga	1,000 Lbs.
GGC6E9 - - - -	Galv. 19" Coil "E" Grade	BB/WH, CC/WH, CG/HG, DS/WH, EG/WH, HV/WH, PC/WH, RB/WH, RW/BK, TA/CU, VG/WH, WH/WH, WI/WH	26 ga	1,000 Lbs.
PGC261178	Bond. 11-7/8" Coil	Bond.	26 ga	Order by the lb.
PGC2615	Bond. 15" Coil	Bond.	26 ga	Order by the lb.

Note: .032 aluminum thickness also available with additional lead-time and potential freight charges. Consult your customer service rep for color and coil width availability.

Rainware & Accessories Colors:

COLOR	CODE	COLOR	CODE	COLOR	CODE	COLOR	CODE	COLOR	CODE
NX ALMOND	AD	COPPER PENNY	CP	HARVEST BROWN	HV*	REDWOOD	RW*	TAHOE BLUE	TA*
ALMOND	AL	COUNTRY BLUE	CU*	NX JEFFERSON TAN	JT	ROSEWOOD	RS	TERRA BRONZE	TB
BEAVER BROWN	BB*	DESERT MAUVE	DM	NX LINEN	LN	ROYAL BROWN	RB*	VICTORIAN GREY	VG*
BLACK	BK*	DESERT SAND	DS*	LINEN	LI	RUSTIC COPPER	M2**	WEATHERED BRONZE	WB
BRONZE	BZ	NX DUNE	CD	MARINE GREEN	MR	NX SAND STONE	SS	WHEAT	WT
BUCKSKIN	BU	EVERGREEN	EG*	MUSKET BROWN	MB	SANDTONE	ST	WICKER	WI*
CAMEO	CA	FROST	FR	NORWEGIAN WOOD	NW	SEA BLUE	S7	30 WHITE	WH*
CHARCOAL GREY	CG*	HARBOR GREY	HG*	PEBBLESTONE CLAY	PC*	NX SIERRA	S1	50 WHITE	50
CLASSIC CREAM	CC*	HERITAGE CREAM	HC	PEACH	PH	SPANISH GREEN	SP	80 WHITE	80

*Available in STEEL

**Rustic Copper is a PREMIUM color.



NORANDEX™ Gutter Coil

LODI PLANT

Spin Down Gutter Coil



Part #	Description	Colors	Nom. Gauge/ Thickness	Pieces/ Pound
ASC21178 - -	Alum. 11-7/8" Coil	*CP, *FR, *WH	0.027	Order by the lb.
ASC278 - - - -	Alum. 11-7/8" Coil	30/30, 50/80, 80/RB, AL/WI, BB/BZ, BU/NW, CC/CA, DS/VG, EG/WH, HC/LI, HG/CG, MR/SP, PC/ST, PH/WH, RB/HV, RB/MB, RS/DM, RW/BK, S7/WH, TA/CU, TB/BB, WB/HV, WB/MB, WH/HV, WT/CA	0.027	Order by the lb.
ASC214WH	Alum. 14" Coil	WH	0.027	Order by the lb.
ASC214 - - - -	Alum. 14" Coil	50/80, AL/WI, BB/BZ, BU/NW, CC/CA, DS/VG, EG/WH, HC/LI, HG/CG, MR/SP, PC/ST, RB/HV, RB/MB, RW/BK, TA/CU, WB/MB	0.027	Order by the lb.
ASC215 - -	Alum. 15" Coil	*CP, *FR, *WH	0.027	Order by the lb.
ASC215 - - - -	Alum. 15" Coil	50/80, 80/RB, AL/WI, BB/BZ, BU/NW, CC/CA, DS/VG, EG/WH, HC/LI, HG/CG, MR/SP, PC/ST, PH/WH, RB/HV, RB/MB, RS/DM, RW/BK, S7/WH, TA/CU, TB/BB, WB/HV, WB/MB, WH/HV, WT/CA	0.027	Order by the lb.
ASC31178 - -	Alum. 11-7/8" Coil	AL, BU, BZ, CA, DS, FR, HV, MS, PC, RB, ST, TB, WH, WI	0.032	Order by the lb.
ASC315 - -	Alum. 15" Coil	AL, BU, BZ, CA, DS, FR, HV, MS, PC, RB, ST, TB, WH, WI	0.032	Order by the lb.

Note: Min. of 25 lbs./Max. of 150 lbs.

***NOTE:** One week extended lead-time for these spin down coil colors.

As an extra service, we'll spin down small quantities of a slow moving color on a special order basis. Minimum quantity is 25 lbs.

Please note, once order is activated, no returns or changes can be made.

Rainware & Accessories Colors: **Available in Steel*

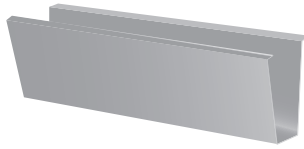
COLOR	CODE	COLOR	CODE	COLOR	CODE	COLOR	CODE	COLOR	CODE
ALMOND	AL	COPPER PENNY	CP	HARVEST BROWN	HV*	ROSEWOOD	RS	WEATHERED BRONZE	WB
BEAVER BROWN	BB*	COUNTRY BLUE	CU*	LINEN	LI	ROYAL BROWN	RB*	WHEAT	WT
BLACK	BK*	DESERT MAUVE	DM	MARINE GREEN	MR	SANDTONE	ST	WICKER	WI*
BRONZE	BZ	DESERT SAND	DS*	MUSKET BROWN	MB	SEA BLUE	S7	30 WHITE	WH*
BUCKSKIN	BU	EVERGREEN	EG*	NORWEGIAN WOOD	NW	SPANISH GREEN	SP	50 WHITE	50
CAMEO	CA	FROST	FR	PEBBLESTONE CLAY	PC*	TAHOE BLUE	TA*	80 WHITE	80
CHARCOAL GREY	CG*	HARBOR GREY	HG*	PEACH	PH	TERRA BRONZE	TB		
CLASSIC CREAM	CC*	HERITAGE CREAM	HC	REDWOOD	RW*	VICTORIAN GREY	VG*		



NORANDEX™ Gutters

LODI PLANT

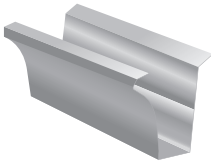
Gutter - Plain



Part #	Description	Colors	Nom. Gauge/ Thickness	Pieces Length	Pieces/ Box
PGUPW520	Bond. 5-1/4 Gutter-PW	Bond.	26 ga	20'	Order by the pc.
PGUPW525	Bond. 5-1/4 Gutter-PW	Bond.	26 ga	25'	Order by the pc.
PGUPW530	Bond. 5-1/4 Gutter-PW	Bond.	26 ga	30'	Order by the pc.
PGUPW720	Bond. 7-1/4 Gutter-PW	Bond.	26 ga	20'	Order by the pc.
PGUPW725	Bond. 7-1/4 Gutter-PW	Bond.	26 ga	25'	Order by the pc.
PGUPW730	Bond. 7-1/4 Gutter-PW	Bond.	26 ga	30'	Order by the pc.

Note: Also available without wing.

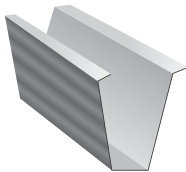
Gutter - Curved



Part #	Description	Colors	Nom. Gauge/ Thickness	Pieces Length	Pieces/ Box
PGUCW525	Bond. 5-1/4 Gutter-CW	Bond.	26 ga	25'	Order by the pc.
PGUCW720	Bond. 7-1/4 Gutter-CW	Bond.	26 ga	20'	Order by the pc.
PGUCW725	Bond. 7-1/4 Gutter-CW	Bond.	26 ga	25'	Order by the pc.
PGUCW730	Bond. 7-1/4 Gutter-CW	Bond.	26 ga	30'	Order by the pc.

Note: Also available without wing.

Gutter - Decco



Part #	Description	Colors	Nom. Gauge/ Thickness	Pieces Length	Pieces/ Box
PGUDW520	Bond. 5-1/4 Gutter-DW	Bond.	26 ga	20'	Order by the pc.
PGUDW525	Bond. 5-1/4 Gutter-DW	Bond.	26 ga	25'	Order by the pc.
PGUDW530	Bond. 5-1/4 Gutter-DW	Bond.	26 ga	30'	Order by the pc.
PGUDW720	Bond. 7-1/4 Gutter-DW	Bond.	26 ga	20'	Order by the pc.
PGUDW725	Bond. 7-1/4 Gutter-DW	Bond.	26 ga	25'	Order by the pc.
PGUDW730	Bond. 7-1/4 Gutter-DW	Bond.	26 ga	30'	Order by the pc.
PGUDW4R720	Bond. 7-1/4 Gutter-DW 4 Rib	Bond.	26 ga	20'	Order by the pc.
PGUDW4R725	Bond. 7-1/4 Gutter-DW 4 Rib	Bond.	26 ga	25'	Order by the pc.
PGUDW4R730	Bond. 7-1/4 Gutter-DW 4 Rib	Bond.	26 ga	30'	Order by the pc.

Note: Also available without wing.

Gutter - Tile Plain

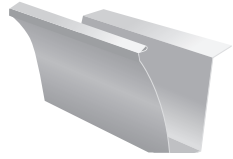
Part #	Description	Colors	Nom. Gauge/ Thickness	Pieces Length	Pieces/ Box
PGUTW720	Bond. 7-1/4 Gutter-TW	Bond.	26 ga	20'	Order by the pc.
PGUTW725	Bond. 7-1/4 Gutter-TW	Bond.	26 ga	25'	Order by the pc.
PGUTW730	Bond. 7-1/4 Gutter-TW	Bond.	26 ga	30'	Order by the pc.



NORANDEX™ Gutters

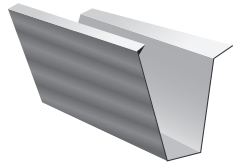
LODI PLANT

Gutter - Tile Curve



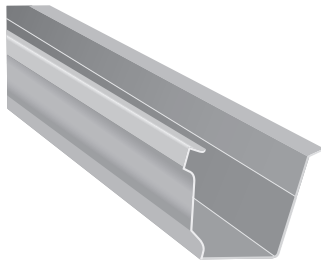
Part #	Description	Colors	Nom. Gauge/ Thickness	Pieces Length	Pieces/ Box
PGUTCW720	Bond. 7-1/4" Gutter-TCW	Bond.	26 ga	20'	Order by the pc.
PGUTCW725	Bond. 7-1/4" Gutter-TCW	Bond.	26 ga	25'	Order by the pc.
PGUTCW730	Bond. 7-1/4" Gutter-TCW	Bond.	26 ga	30'	Order by the pc.

Gutter - Tile Decco



Part #	Description	Colors	Nom. Gauge/ Thickness	Pieces Length	Pieces/ Box
PGUTDW720	Bond. 7-1/4" Gutter-TDW	Bond.	26 ga	20'	Order by the pc.
PGUTDW725	Bond. 7-1/4" Gutter-TDW	Bond.	26 ga	25'	Order by the pc.
PGUTDW730	Bond. 7-1/4" Gutter-TDW	Bond.	26 ga	30'	Order by the pc.
PGUTDW4725	Bond. 7-1/4" Gutter-TDW 4 Rib	Bond.	26 ga	25'	Order by the pc.
PGUTDW4730	Bond. 7-1/4" Gutter-TDW 4 Rib	Bond.	26 ga	30'	Order by the pc.

Gutter - K-Style



Part #	Description	Colors	Nom. Gauge/ Thickness	Pieces Length	Pieces/ Box
PGUKW420	Bond. 4" Gutter- KW	Bond.	26 ga	20'	Order by the pc.
PGUKW425	Bond. 4" Gutter- KW	Bond.	26 ga	25'	Order by the pc.
PGUKW430	Bond. 4" Gutter- KW	Bond.	26 ga	30'	Order by the pc.
PGUKW520	Bond. 5" Gutter- KW	Bond.	26 ga	20'	Order by the pc.
PGUKW525	Bond. 5" Gutter- KW	Bond.	26 ga	25'	Order by the pc.
PGUKW530	Bond. 5" Gutter- KW	Bond.	26 ga	30'	Order by the pc.
PGUKW620	Bond. 6" Gutter- KW	Bond.	26 ga	20'	Order by the pc.
PGUKW625	Bond. 6" Gutter- KW	Bond.	26 ga	25'	Order by the pc.
PGUKW630	Bond. 6" Gutter- KW	Bond.	26 ga	30'	Order by the pc.



NORANDEX™ End Caps

LODI PLANT

End Cap Reference Chart

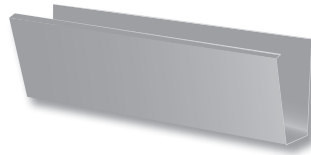
FASCIA & DECCO STYLE END CAPS



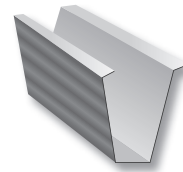
5 1/4" Fascia End Cap



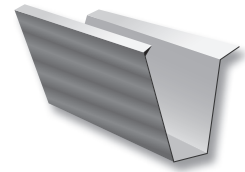
7 1/4" Fascia End Cap
Notched for roof tile applications.



Fascia Gutter
PGUPW - -



Gutter Decco
PGUDW - -



Tile Decco Gutter
PGUTDW - -

GEC52LML Galv. 5 1/4" Left End Cap
GEC52RML Galv. 5 1/4" Right End Cap

7 1/4" end caps are notched in back for roof tile applications.

GEC72LML Galv. 7 1/4" Left End Cap
GEC72RML Galv. 7 1/4" Right End Cap
PEC72L Bond. 7 1/4" Left End Cap
PEC72R Bond. 7 1/4" Right End Cap

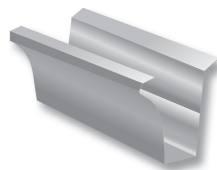
CURVED STYLE END CAPS



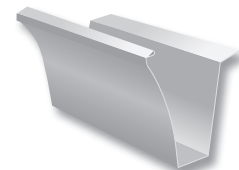
5 1/4" Curved End Cap



7 1/4" Curved End Cap
Notched for roof tile applications.



Curved Gutter
PGUCW - -



Tile Curved Gutter
PGUTCW - -

GEC52LCML Galv. 5 1/4" Left End Cap Curved
GEC52RCML Galv. 5 1/4" Right End Cap Curved

7 1/4" end caps are notched in back for roof tile applications.

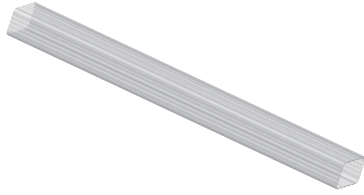
GEC72LCML Galv. 7 1/4" Left End Cap Curved
GEC72RCML Galv. 7 1/4" Right End Cap Curved
PEC72LC Bond. 7 1/4" Left End Cap Curved
PEC72RC Bond. 7 1/4" Right End Cap Curved



NORANDEX™ Downspouts

LODI PLANT

Downspouts



Part #	Description	Colors	Nom. Gauge/ Thickness	Piece Length	Pieces/ Box	Boxes/ Pallet
ADS238 - -	Alum. D/S 2 x 3 Corrugated 8'	(Listed Below)	0.019	8'	10	28
ADS238M2	Alum. D/S 2 x 3 Corrugated 8'	M2 (Premium Color)	0.019	8'	10	28
ADS2310 - -	Alum. D/S 2 x 3 Corrugated 10'	(Listed Below)	0.019	10'	10	28
ADS2310M2	Alum. D/S 2 x 3 Corrugated 10'	M2 (Premium Color)	0.019	10'	10	28
ADS3410 - -	Alum. D/S 3 x 4 Corrugated 10'	*(Listed Below)	0.019	10'	10	15
ADS3410M2	Alum. D/S 3 x 4 Corrugated 10'	M2 (Premium Color)	0.019	10'	10	15
ADS24510 - -	Alum. D/S 4 x 5 Corrugated 10'	BK, RB, WH, 80	0.027	10'	6	- -

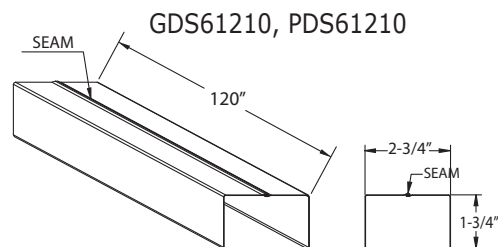
*Also available in Montana Suede (MS)

GDS61210 - -	Galv. D/S 1-3/4 x 2-3/4 Steel Painted 10'	(Steel Colors Below)	26 ga	10'	10	
GDS61210ML	Galv. D/S 1-3/4 x 2-3/4 Steel Plain 10'	Mill	26 ga	10'	10	
GDS61211ML	Galv. D/S 1-3/4 x 2-3/4 Steel Plain 11'	Mill	26 ga	11'	10	
GDS81220ML	Galv. D/S 1-3/4 x 2-3/4 Steel Plain 20'	Mill	28 ga	20'	10	
GDS82310 - -	Galv. D/S 2 x 3 Steel Corrugated Painted 10'	(Steel Colors Below)	28 ga	10'	10	
GDS82310PR	Galv. D/S 2 x 3 Steel 10'	Prime	28 ga	10'	10	
GDS82310ML	Galv. D/S 2 x 3 Steel Corrugated Plain 10'	Mill	28 ga	10'	10	
GDS63410 - -	Galv. D/S 3 x 4 Steel Corrugated Painted 10'	*(Steel Colors Below)	26 ga	10'	5	
GDS63410ML	Galv. D/S 3 x 4 Steel Corrugated Plain 10'	Mill	26 ga	10'	5	
GDS63410M	Galv. D/S 3 x 4 Steel Smooth Plain 10'	Mill	26 ga	10'	5	

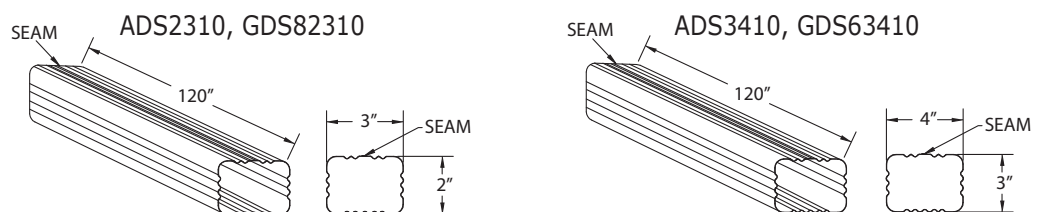
*Note: Extended lead time required for this part in these colors.

PDS61210	Bond. D/S 1-3/4 x 2-3/4 Plain 10'	Bond.	26 ga	10'	10	
PDS61211	Bond. D/S 1-3/4 x 2-3/4 Plain 11'	Bond.	26 ga	11'	10	
PDS61212	Bond. D/S 1-3/4 x 2-3/4 Plain 12'	Bond.	26 ga	12'	10	
PDS61220	Bond. D/S 1-3/4 x 2-3/4 Plain 20'	Bond.	26 ga	20'	10	
PDS61222	Bond. D/S 1-3/4 x 2-3/4 Plain 22'	Bond.	26 ga	22'	10	
PDS62310	Bond. D/S 2 x 3 Plain 10'	Bond.	26 ga	10'	10	
PDS63410	Bond. D/S 3 x 4 Plain 10'	Bond.	26 ga	10'	10	
PDSW61211	Bond. D/S 1-3/4 x 2-3/4 Plain 11'	Bond.	26 ga	11'	10	

SMOOTH PLAIN



CORRUGATED



Rainware & Accessories Colors:

COLOR	CODE	COLOR	CODE	COLOR	CODE	COLOR	CODE	COLOR	CODE
NX ALMOND	AD	COPPER PENNY	CP	HARVEST BROWN	HV*	REDWOOD	RW*	TAHOE BLUE	TA*
ALMOND	AL	COUNTRY BLUE	CU*	NX JEFFERSON TAN	JT	ROSEWOOD	RS	TERRA BRONZE	TB
BEAVER BROWN	BB*	DESERT MAUVE	DM	NX LINEN	LN	ROYAL BROWN	RB*	VICTORIAN GREY	VG*
BLACK	BK*	DESERT SAND	DS*	LINEN	LI	RUSTIC COPPER	M2**	WEATHERED BRONZE	WB
BRONZE	BZ	NX DUNE	CD	MARINE GREEN	MR	NX SAND STONE	SS	WHEAT	WT
BUCKSKIN	BU	EVERGREEN	EG*	MUSKET BROWN	MB	SANDTONE	ST	WICKER	WI*
CAMEO	CA	FROST	FR	NORWEGIAN WOOD	NW	SEA BLUE	S7	30 WHITE	WH*
CHARCOAL GREY	CG*	HARBOR GREY	HG*	PEBBLESTONE CLAY	PC*	NX SIERRA	SI	50 WHITE	50
CLASSIC CREAM	CC*	HERITAGE CREAM	HC	PEACH	PH	SPANISH GREEN	SP	80 WHITE	80

*Available in STEEL (extended lead-time)

**Rustic Copper is a PREMIUM color.



NORANDEX™ Elbows

LODI PLANT

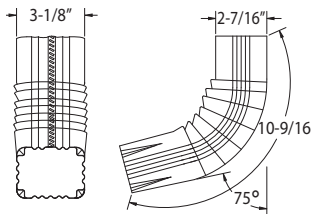
Elbows



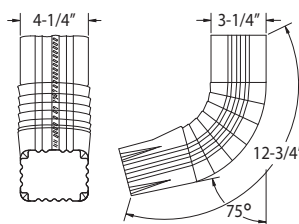
Part #	Description	Colors	Nom. Gauge/ Thickness	Pieces/ Box
AAE23 - -	Alum. 2 x 3 A Corrugated Elbow	(Listed Below)	0.019	30
AAE23M2	Alum. 2 x 3 A Corrugated Elbow	M2 (Premium Color)	0.019	30
ABE23 - -	Alum. 2 x 3 B Corrugated Elbow	(Listed Below)	0.019	30
ABE23M2	Alum. 2 x 3 B Corrugated Elbow	M2 (Premium Color)	0.019	30
AAE34 - -	Alum. 3 x 4 A Corrugated Elbow	*(Listed Below)	0.019	30
AAE34M2	Alum. 3 x 4 A Corrugated Elbow	M2 (Premium Color)	0.019	30
ABE34 - -	Alum. 3 x 4 B Corrugated Elbow	*(Listed Below)	0.019	30
ABE34M2	Alum. 3 x 4 B Corrugated Elbow	M2 (Premium Color)	0.019	30
<i>*Also available in Montana Suede (MS)</i>				
GAE812 - -	Galv. 1-3/4 x 2-3/4 A Plain Elbow	(Steel Colors Below)	28 ga	30
GBE812 - -	Galv. 1-3/4 x 2-3/4 B Plain Elbow	(Steel Colors Below)	28 ga	30
GAE812ML	Galv. 1-3/4 x 2-3/4 A Plain Elbow	Mill	28 ga	30
GBE812ML	Galv. 1-3/4 x 2-3/4 B Plain Elbow	Mill	28 ga	30
GAE823 - -	Galv. 2 x 3 A Corrugated Elbow	(Steel Colors Below)	28 ga	30
GBE823 - -	Galv. 2 x 3 B Corrugated Elbow	(Steel Colors Below)	28 ga	30
GAE823ML	Galv. 2 x 3 A Corrugated Elbow	Mill	28 ga	30
GBE823ML	Galv. 2 x 3 B Corrugated Elbow	Mill	28 ga	30
GAE823PR	Galv. 2 x 3 A Corrugated Elbow	Prime	28 ga	30
GBE823PR	Galv. 2 x 3 B Corrugated Elbow	Prime	28 ga	30
GAE634 - -	Galv. 3 x 4 A Corrugated Elbow	*(Steel Colors Below)	26 ga	30
GBE634 - -	Galv. 3 x 4 B Corrugated Elbow	*(Steel Colors Below)	26 ga	30
GAE6734ML	Galv. 3 x 4 A Smooth Elbow	Mill	26 ga	20
GBE6734ML	Galv. 3 x 4 B Smooth Elbow	Mill	26 ga	20
PAE12	Bond. 1-3/4 x 2-3/4 Smooth A Elbow	Bond.	26 ga	20

***Note:** Extended lead time required for this part in these colors.

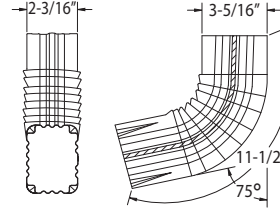
AAE23, GAE823 A-Elbow



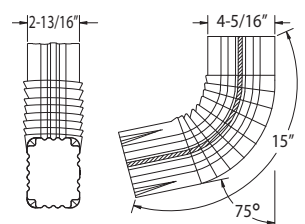
AAE34, GAE634 A-Elbow



ABE23, GBE823 B-Elbow



ABE34, GBE634 B-Elbow



Variable Deg. Elbows

Variable degree elbows are used to go around obstructions (ledge jumpers) or transition to the slope of the roof. Number of crimps to create angle can vary with manufacturer.

Part #	Description	Colors	Nom. Gauge/ Thickness	Pieces/ Box
AAE423 - -	Alum. 2 x 3 A Var Deg Elbow 45°	(Listed Below)	0.019	30
ABE423 - -	Alum. 2 x 3 B Var Deg Elbow 45°	(Listed Below)	0.019	30
AAE923 - -	Alum. 2 x 3 A Var Deg Elbow 90°	(Listed Below)	0.019	24
ABE923 - -	Alum. 2 x 3 B Var Deg Elbow 90°	(Listed Below)	0.019	24
GAE8412ML	Galv. 1-3/4 x 2-3/4 Smooth A Var Deg Elbow 45°	Mill	28 ga	20
GAE8912ML	Galv. 1-3/4 x 2-3/4 Smooth A Var Deg Elbow 90°	Mill	28 ga	20
GAE8423ML	Galv. 2 x 3 Smooth A Var Deg Elbow 45°	Mill	28 ga	20
GAE8623ML	Galv. 2 x 3 Smooth A Var Deg Elbow 60°	Mill	28 ga	20
PAE412	Bond. 1-3/4 x 2-3/4 Smooth A Var Deg Elbow 45°	Bond.	26 ga	20
PAE612	Bond. 1-3/4 x 2-3/4 Smooth A Var Deg Elbow 60°	Bond.	26 ga	20
PAE912	Bond. 1-3/4 x 2-3/4 Smooth A Var Deg Elbow 90°	Bond.	26 ga	20

Rainware & Accessories Colors:

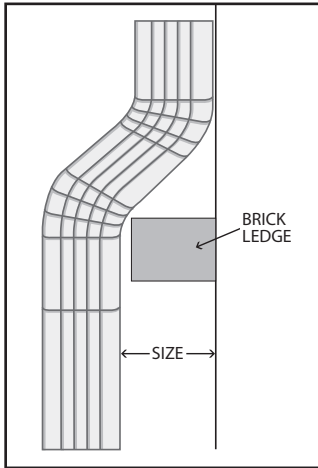
COLOR	CODE	COLOR	CODE	COLOR	CODE	COLOR	CODE	COLOR	CODE
NX ALMOND	AD	COPPER PENNY	CP	HARVEST BROWN	HV*	REDWOOD	RW*	TAHOE BLUE	TA*
ALMOND	AL	COUNTRY BLUE	CU*	NX JEFFERSON TAN	JT	ROSEWOOD	RS	TERRA BRONZE	TB
BEAVER BROWN	BB*	DESERT MAUVE	DM	NX LINEN	LN	ROYAL BROWN	RB*	VICTORIAN GREY	VG*
BLACK	BK*	DESERT SAND	DS*	LINEN	LI	RUSTIC COPPER	M2**	WEATHERED BRONZE	WB
BRONZE	BZ	NX DUNE	CD	MARINE GREEN	MR	NX SAND STONE	SS	WHEAT	WT
BUCKSKIN	BU	EVERGREEN	EG*	MUSKET BROWN	MB	SANDTONE	ST	WICKER	WI*
CAMEO	CA	FROST	FR	NORWEGIAN WOOD	NW	SEA BLUE	S7	30 WHITE	WH*
CHARCOAL GREY	CG*	HARBOR GREY	HG*	PEBBLESTONE CLAY	PC*	NX SIERRA	S1	50 WHITE	50
CLASSIC CREAM	CC*	HERITAGE CREAM	HC	PEACH	PH	SPANISH GREEN	SP	80 WHITE	80

***Available in STEEL** (extended lead-time)

****Rustic Copper is a PREMIUM color.**

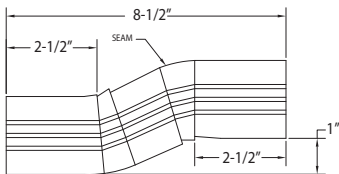


Offsets

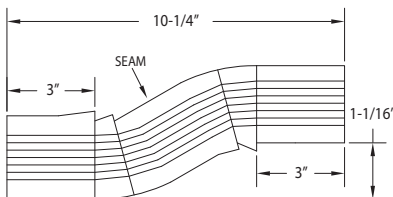


We have several varieties of offset downspout connections to transition gracefully over a brick ledge. You can eliminate the awkward look of a two-piece configuration with our choice of 1" to 6" away-from-the-wall options.

ABO1123A A-Offset



ABO1134A A-Offset



Part #	Description	Colors	Nom. Gauge/Thickness	Pieces/Box
ABO1123A --	Alum. 2 x 3 - 1" Offset A's	*(Listed Below)	0.019	24
*Also available in Montana Suede (MS). Not available in Rustic Copper (M2).				
ABO1223A --	Alum. 2 x 3 - 2" Offset A's	(Listed Below)	0.019	24
ABO1223AM2	Alum. 2 x 3 - 2" Offset A's	M2 (Premium Color)	0.019	24
ABO1223B --	Alum. 2 x 3 - 2" Offset B's	(Listed Below)	0.019	24
ABO1423A --	Alum. 2 x 3 - 4" Offset A's	(Listed Below)	0.019	20
ABO1423AM2	Alum. 2 x 3 - 4" Offset A's	M2 (Premium Color)	0.019	20
ABO1423B --	Alum. 2 x 3 - 4" Offset B's	(Listed Below)	0.019	20
ABO1134A --	Alum. 3 x 4 - 1" Offset A's	(Listed Below)	0.019	24
ABO1134AM2	Alum. 3 x 4 - 1" Offset A's	M2 (Premium Color)	0.019	24
ABO1134B --	Alum. 3 x 4 - 1" Offset B's	(Listed Below)	0.019	24
ABO1234A --	Alum. 3 x 4 - 2" Offset A's	(Listed Below)	0.019	24
ABO1234AM2	Alum. 3 x 4 - 2" Offset A's	M2 (Premium Color)	0.019	24
ABO1234B --	Alum. 3 x 4 - 2" Offset B's	(Listed Below)	0.019	24
ABO1334A --	Alum. 3 x 4 - 3" Offset A's	(Listed Below)	0.019	24
ABO1334AM2	Alum. 3 x 4 - 3" Offset A's	M2 (Premium Color)	0.019	24
ABO1334B --	Alum. 3 x 4 - 3" Offset B's	(Listed Below)	0.019	24
ABO1434A --	Alum. 3 x 4 - 4" Offset A's	(Listed Below)	0.019	20
ABO1434AM2	Alum. 3 x 4 - 4" Offset A's	M2 (Premium Color)	0.019	20
ABO1434B --	Alum. 3 x 4 - 4" Offset B's	(Listed Below)	0.019	20
ABO1323A --	Alum. 2 x 3 - 3" Offset A's	*(Listed Below)	0.019	24
ABO1323B --	Alum. 2 x 3 - 3" Offset B's	*(Listed Below)	0.019	24
ABO1523A --	Alum. 2 x 3 - 5" Offset A's	*(Listed Below)	0.019	20
ABO1523B --	Alum. 2 x 3 - 5" Offset B's	*(Listed Below)	0.019	20
ABO1623A --	Alum. 2 x 3 - 6" Offset A's	*(Listed Below)	0.019	20
ABO1623B --	Alum. 2 x 3 - 6" Offset B's	*(Listed Below)	0.019	20
ABO1534A --	Alum. 3 x 4 - 5" Offset A's	*(Listed Below)	0.019	20
ABO1534B --	Alum. 3 x 4 - 5" Offset B's	*(Listed Below)	0.019	20
ABO1634A --	Alum. 3 x 4 - 6" Offset A's	*(Listed Below)	0.019	20
ABO1634B --	Alum. 3 x 4 - 6" Offset B's	*(Listed Below)	0.019	20
AAOE23 --	Alum. 2 x 3 Offset Elbow	MB, WH, WT	0.019	24
ABOE23 --	Alum. 2 x 3 Offset Elbow	MB, WH, WT	0.019	24
*Not available in Rustic Copper (M2).				
GBO1123A --	Galv. 2 x 3 - 1" Offset A's	(Steel Colors Below)	26 ga	24
GBO1123B --	Galv. 2 x 3 - 1" Offset B's	(Steel Colors Below)	26 ga	24
GBO1334B --	Galv. 3 x 4 - 3" Offset B's	HV, WH	26 ga	24
GAOE823 --	Galv. 2 x 3 - 3" Offset Elbow A's	HV, WH	28 ga	24
GBOE823 --	Galv. 2 x 3 - 3" Offset Elbow B's	HV, WH	28 ga	24
GAOE34 --	Galv. 3 x 4 - 3" Offset Elbow A's	HV, WH	26 ga	24
GBOE34 --	Galv. 3 x 4 - 3" Offset Elbow B's	HV, WH	26 ga	24

Rainware & Accessories Colors:

COLOR	CODE	COLOR	CODE	COLOR	CODE	COLOR	CODE	COLOR	CODE
NX ALMOND	AD	COPPER PENNY	CP	HARVEST BROWN	HV*	REDWOOD	RW*	TAHOE BLUE	TA*
ALMOND	AL	COUNTRY BLUE	CU*	NX JEFFERSON TAN	JT	ROSEWOOD	RS	TERRA BRONZE	TB
BEAVER BROWN	BB*	DESERT MAUVE	DM	NX LINEN	LN	ROYAL BROWN	RB*	VICTORIAN GREY	VG*
BLACK	BK*	DESERT SAND	DS*	LINEN	LI	RUSTIC COPPER	M2**	WEATHERED BRONZE	WB
BRONZE	BZ	NX DUNE	CD	MARINE GREEN	MR	NX SAND STONE	SS	WHEAT	WT
BUCKSKIN	BU	EVERGREEN	EG*	MUSKET BROWN	MB	SANDTONE	ST	WICKER	WI*
CAMEO	CA	FROST	FR	NORWEGIAN WOOD	NW	SEA BLUE	S7	30 WHITE	WH*
CHARCOAL GREY	CG*	HARBOR GREY	HG*	PEBBLESTONE CLAY	PC*	NX SIERRA	SI	50 WHITE	50
CLASSIC CREAM	CC*	HERITAGE CREAM	HC	PEACH	PH	SPANISH GREEN	SP	80 WHITE	80

*Available in STEEL (extended lead-time)

**Rustic Copper is a PREMIUM color.



NORANDEX™ Downspout Accessories

LODI PLANT

Leader Heads



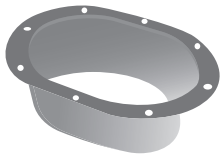
Part #	Description	Colors	Nom. Gauge/ Thickness	Pieces/ Box
ALH23WH	Alum. 2 x 3 Leader Head - 9 x 7 Opening	WH	0.027	15
ALH34WH	Alum. 3 x 4 Leader Head - 10 x 6 Opening	WH	0.027	6
GLH12ML	Galv. 1-3/4 x 2-3/4 Leader Head - 10 x 5 Opening	Mill	26 ga	Order by the pc.
GLH23ML	Galv. 2 x 3 Leader Head - 9 x 7 Opening	Mill	26 ga	Order by the pc.
GLH34ML	Galv. 3 x 4 Leader Head - 9 x 7 Opening	Mill	26 ga	Order by the pc.
GLH46ML	Galv. 4 x 6 Leader Head	Mill	26 ga	Order by the pc.
PLH34	Bond. 3 x 4 Leader Head - 9 x 7 Opening	Bond.	26 ga	Order by the pc.

Outlets

Rectangle
Outlet

Part #	Description	Colors	Pieces/ Box
AOOV34ML	Alum. 4" Oval Outlet	*	50
AORE23ML	Alum. 2 x 3 Rectangle Outlet	*	30
AORE34ML	Alum. 3 x 4 Rectangle Outlet	*	50
AORE45ML	Alum. 4 x 5 Rectangle Outlet	*	50

Oval
Outlet



GOOV3ML	Galv. 3" Oval Outlet	Mill	50
GORE12ML	Galv. 1-3/4 x 2-3/4 Rectangle Outlet	Mill	50

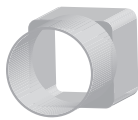
***NOTE:** Aluminum outlets made with mill or painted finish per manufacturer's discretion.

Wire Strainers



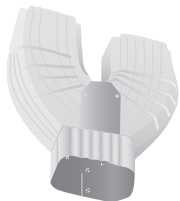
Part #	Description	Colors	Pieces/ Box
GWS2	Galv. 2" Wire Strainer	Mill	50
GWS3	Galv. 3" Wire Strainer	Mill	50

PVC Adapters



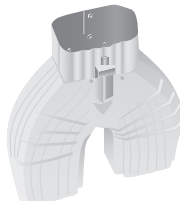
Part #	Description	Colors	Pieces/ Box
APVC344WH	PVC 3 x 4 x 4 Flush Mount Adapter	WH	24

Y Adapters



Part #	Description	Colors	Nom. Gauge/ Thickness	Pieces/ Box
AYA23 - -	Alum. 2 x 3 Y Adapter	RB, WH	0.019	10
AYA34 - -	Alum. 3 x 4 Y Adapter	RB, WH	0.019	10

Y Diverters



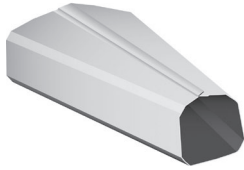
Part #	Description	Colors	Nom. Gauge/ Thickness	Pieces/ Box
AYD23 - -	Alum. 2 x 3 Y Diverter	RB, WH	0.019	10
AYD34 - -	Alum. 3 x 4 Y Diverter	RB, WH	0.019	10



NORANDEX™ Downspout Accessories

LODI PLANT

Funnels



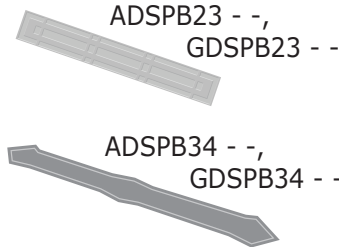
Part #	Description	Colors	Nom. Gauge/ Thickness	Pieces/ Box
AFN23 - -	Alum. 2 x 3 Funnel	RB, WH	0.018	12
AFN34 - -	Alum. 3 x 4 Funnel	RB	0.018	12

Leader Straps



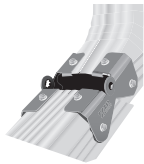
Part #	Description	Colors	Nom. Gauge/ Thickness	Pieces/ Box
GDSPB12 - -	Galv. 1-3/4 x 2-3/4 Leader Strap	(Steel Colors Below)	26 ga	100
GDSPB12ML	Galv. 1-3/4 x 2-3/4 Leader Strap	Mill	26 ga	100
GDSPB23ML	Galv. 2 x 3 Leader Strap	Mill	26 ga	100
GDSPB34ML	Galv. 3 x 4 Leader Strap	Mill	26 ga	100

Pipe Bands



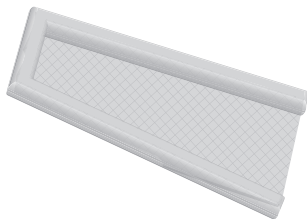
Part #	Description	Colors	Nom. Gauge/ Thickness	Pieces/ Box
ADSPB23 - -, GDSPB23 - -	Alum. 2 x 3 Pipe Band	(Listed Below)	0.019	100
ADSPB34 - -	Alum. Pipe Band, Fits 2 x 3 & 3 x 4	(Listed Below)	0.019	100
ADSPB34M2	Alum. Pipe Band, Fits 2 x 3 & 3 x 4	M2 (Premium Color)	0.019	100
ADSCP23 - -	Alum. 2 x 3 Clip	*(Listed Below)	0.032	100
ADSCP34 - -	Alum. 3 x 4 Clip	(Listed Below)	0.032	50
<i>*Also available in Montana Suede (MS).</i>				
GDSPB23 - -	Galv. 2 x 3 Pipe Band	(Steel Colors Below)	26 ga	100
GDSPB34 - -	Galv. Pipe Band, Fits 2 x 3 & 3 x 4	(Steel Colors Below)	26 ga	100
GDSPB46ML	Galv. 4 x 6 Pipe Band	Mill	26 ga	100
GDSPB7ML	Galv. 7" Pipe Band	Mill	26 ga	100

Downspout Hinges



Part #	Description	Colors	Pairs/ Bag	Bags/ Box	Pairs/ Box
AZHWH	Aluminum 2 x 3 / 3 x 4 Zip Hinge	WH	12 pairs	20	240 pairs

Splash Blocks



Part #	Description	Colors	Pieces/ Box
SBGN	Splash Block - Green	GN	Order by the pc. 10 pcs./box
SBBR	Splash Block - Brown	BR	Order by the pc. 10 pcs./box

Rainware & Accessories Colors:

COLOR	CODE	COLOR	CODE	COLOR	CODE	COLOR	CODE	COLOR	CODE
NX ALMOND	AD	COPPER PENNY	CP	HARVEST BROWN	HV*	REDWOOD	RW*	TAHOE BLUE	TA*
ALMOND	AL	COUNTRY BLUE	CU*	NX JEFFERSON TAN	JT	ROSEWOOD	RS	TERRA BRONZE	TB
BEAVER BROWN	BB*	DESERT MAUVE	DM	NX LINEN	LN	ROYAL BROWN	RB*	VICTORIAN GREY	VG*
BLACK	BK*	DESERT SAND	DS*	LINEN	LI	RUSTIC COPPER	M2**	WEATHERED BRONZE	WB
BRONZE	BZ	NX DUNE	CD	MARINE GREEN	MR	NX SAND STONE	SS	WHEAT	WT
BUCKSKIN	BU	EVERGREEN	EG*	MUSKET BROWN	MB	SANDTONE	ST	WICKER	WI*
CAMEO	CA	FROST	FR	NORWEGIAN WOOD	NW	SEA BLUE	S7	30 WHITE	WH*
CHARCOAL GREY	CG*	HARBOR GREY	HG*	PEBBLESTONE CLAY	PC*	NX SIERRA	SI	50 WHITE	50
CLASSIC CREAM	CC*	HERITAGE CREAM	HC	PEACH	PH	SPANISH GREEN	SP	80 WHITE	80

***Available in STEEL (extended lead-time)**

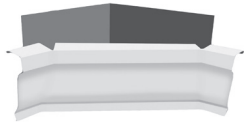
****Rustic Copper is a PREMIUM color.**



NORANDEX™ Miters

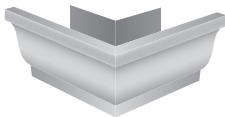
LODI PLANT

Extreme™ Miters

Extreme™
Miter

Part #	Description	Colors	Nom. Gauge/ Thickness	Pieces/ Box
AEM5 - -	Alum. 5" Extreme™ Miter	RB, WH, 80	0.019	10

Box Miters

Box Miter
InsideBox Miter
Outside

Part #	Description	Colors	Nom. Gauge/ Thickness	Pieces/ Box
ABM5I - -	Alum. 5" Inside K Box Miter	(Listed Below)	0.019	20
ABM5IM2	Alum. 5" Inside K Box Miter	M2 (Premium Color)	0.019	20
ABM5O - -	Alum. 5" Outside K Box Miter	(Listed Below)	0.019	20
ABM5OM2	Alum. 5" Outside K Box Miter	M2 (Premium Color)	0.019	20
ABM6I - -	Alum. 6" Inside K Box Miter	*(Listed Below)	0.019	20
ABM6IM2	Alum. 6" Inside K Box Miter	M2 (Premium Color)	0.019	20
ABM6O - -	Alum. 6" Outside K Box Miter	*(Listed Below)	0.019	20
ABM6OM2	Alum. 6" Outside K Box Miter	M2 (Premium Color)	0.019	20

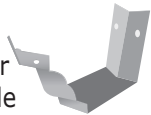
*Also available in Montana Suede (MS)

Bay Miters

Bay Miter
45° InsideBay Miter
45° Outside

Part #	Description	Colors	Nom. Gauge/ Thickness	Pieces/ Box
ABY5I - -	Alum. 5" Inside K Bay Miter	(Listed Below)	0.019	20
ABY5IM2	Alum. 5" Inside K Bay Miter	M2 (Premium Color)	0.019	20
ABY5O - -	Alum. 5" Outside K Bay Miter	(Listed Below)	0.019	20
ABY5OM2	Alum. 5" Outside K Bay Miter	M2 (Premium Color)	0.019	20
ABY6I - -	Alum. 6" Inside K Bay Miter	(Listed Below)	0.019	20
ABY6IM2	Alum. 6" Inside K Bay Miter	M2 (Premium Color)	0.019	20
ABY6O - -	Alum. 6" Outside K Bay Miter	(Listed Below)	0.019	20
ABY6OM2	Alum. 6" Outside K Bay Miter	M2 (Premium Color)	0.019	20

Strip Miters

Strip Miter
90° InsideStrip Miter
90° Outside

Part #	Description	Colors	Nom. Gauge/ Thickness	Pieces/ Box
ASM5I - -	Alum. 5" Inside K Strip Miter	(Listed Below)	0.027	20
ASM5IM2	Alum. 5" Inside K Strip Miter	M2 (Premium Color)	0.027	20
ASM5O - -	Alum. 5" Outside K Strip Miter	(Listed Below)	0.027	20
ASM5OM2	Alum. 5" Outside K Strip Miter	M2 (Premium Color)	0.027	20
ASM6I - -	Alum. 6" Inside K Strip Miter	(Listed Below)	0.027	20
ASM6IM2	Alum. 6" Inside K Strip Miter	M2 (Premium Color)	0.027	20
ASM6O - -	Alum. 6" Outside K Strip Miter	(Listed Below)	0.027	20
ASM6OM2	Alum. 6" Outside K Strip Miter	M2 (Premium Color)	0.027	20

Rainware & Accessories Colors:

COLOR	CODE	COLOR	CODE	COLOR	CODE	COLOR	CODE	COLOR	CODE
NX ALMOND	AD	COPPER PENNY	CP	HARVEST BROWN	HV	REDWOOD	RW	TAHOE BLUE	TA
ALMOND	AL	COUNTRY BLUE	CU	NX JEFFERSON TAN	JT	ROSEWOOD	RS	TERRA BRONZE	TB
BEAVER BROWN	BB	DESERT MAUVE	DM	NX LINEN	LN	ROYAL BROWN	RB	VICTORIAN GREY	VG
BLACK	BK	DESERT SAND	DS	LINEN	LI	RUSTIC COPPER	M2*	WEATHERED BRONZE	WB
BRONZE	BZ	NX DUNE	CD	MARINE GREEN	MR	NX SAND STONE	SS	WHEAT	WT
BUCKSKIN	BU	EVERGREEN	EG	MUSKET BROWN	MB	SANDTONE	ST	WICKER	WI
CAMEO	CA	FROST	FR	NORWEGIAN WOOD	NW	NX SIERRA	SI	30 WHITE	WH
CHARCOAL GREY	CG	HARBOR GREY	HG	PEBBLESTONE CLAY	PC	SEA BLUE	S7	50 WHITE	50
CLASSIC CREAM	CC	HERITAGE CREAM	HC	PEACH	PH	SPANISH GREEN	SP	80 WHITE	80

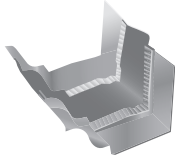
*Rustic Copper is a PREMIUM color.



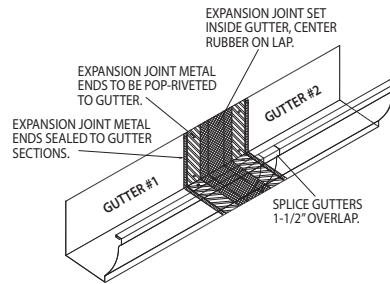
NORANDEX™ Joints

LODI PLANT

Expansion Joints



Part #	Description	Colors	Nom. Gauge/ Thickness	Pieces/ Box
AEJ5ML	Alum. 5" K Expansion Joint	Mill	0.030	12
AEJ6ML	Alum. 6" K Expansion Joint	Mill	0.030	12

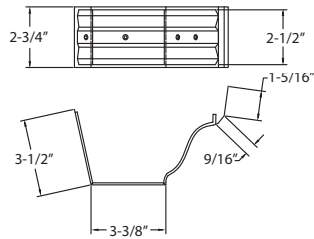


A 40' section of gutter can potentially expand almost 2/3 of an inch from winter to summer moving the fasteners back and forth until the gutter falls down. Expansion joints are a preventive measure for excessive movement in the gutter, and should be mounted in place every 40' of exceptionally long gutter runs.

Slip Joints




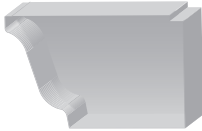

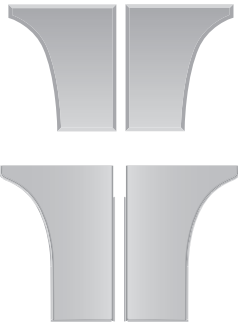
Part #	Description	Colors	Nom. Gauge/ Thickness	Pieces/ Box
ASJC5 - -	Alum. 5" K Slip Joint	RB, WH	0.019	Order by the pc.





NORANDEX™ End Caps

LODI PLANT

End Caps		Part #	Description	Colors	Nom. Gauge/ Thickness	Piece Length	Pieces/ Box
 <p>FASCIA</p>	AEC5L - -	Alum. 5" Left End Cap K		*(Listed Below)	0.019	5"	50
	AEC5LM2	Alum. 5" Left End Cap K		M2 (Premium Color)	0.019	5"	50
	AEC5R - -	Alum. 5" Right End Cap K		*(Listed Below)	0.019	5"	50
	AEC5RM2	Alum. 5" Right End Cap K		M2 (Premium Color)	0.019	5"	50
	AEC6L - -	Alum. 6" Left End Cap K		(Listed Below)	0.019	6"	50
	AEC6LM2	Alum. 6" Left End Cap K		M2 (Premium Color)	0.019	6"	50
	AEC6R - -	Alum. 6" Right End Cap K		(Listed Below)	0.019	6"	50
	AEC6RM2	Alum. 6" Right End Cap K		M2 (Premium Color)	0.019	6"	50
	AFEC525L - -	Alum. 5¼" Left End Cap Seamless Fascia		(Listed Below)	0.019	5¼"	50
	AFEC525R - -	Alum. 5¼" Right End Cap Seamless Fascia		(Listed Below)	0.019	5¼"	50
*Also available in Montana Suede (MS)							
 <p>K-STYLE</p>	GEC4LML	Galv. 4" Left End Cap K		Mill	26 ga	4"	50
	GEC4RML	Galv. 4" Right End Cap K		Mill	26 ga	4"	50
	GEC5L - -	Galv. 5" Left End Cap K		(Steel Colors Below)	26 ga	5"	30
	GEC5R - -	Galv. 5" Right End Cap K		(Steel Colors Below)	26 ga	5"	30
	GEC5LML	Galv. 5" Left End Cap K		Mill	26 ga	5"	50
	GEC5RML	Galv. 5" Right End Cap K		Mill	26 ga	5"	50
	GEC6L - -	Galv. 6" Left End Cap K		(Steel Colors Below)	26 ga	6"	30
	GEC6R - -	Galv. 6" Right End Cap K		(Steel Colors Below)	26 ga	6"	30
	GEC6LPR	Galv. 6" Left End Cap K		Prime	26 ga	6"	30
	GEC6RPR	Galv. 6" Right End Cap K		Prime	26 ga	6"	30
 <p>SEAMLESS FASCIA</p>	GEC6LML	Galv. 6" Left End Cap K		Mill	26 ga	6"	50
	GEC6RML	Galv. 6" Right End Cap K		Mill	26 ga	6"	50
	GEC52LC - -	Galv. 5¼" Left End Cap fits Curved style gutters		(Steel Colors Below)	26 ga	5¼"	50
	GEC52RC - -	Galv. 5¼" Right End Cap fits Curved style gutters		(Steel Colors Below)	26 ga	5¼"	50
	GEC52LCML	Galv. 5¼" Left End Cap fits Curved style gutters		Mill	26 ga	5¼"	50
	GEC52RCML	Galv. 5¼" Right End Cap fits Curved style gutters		Mill	26 ga	5¼"	50
	GEC72LC - -	Galv. 7¼" Left End Cap fits Curved style gutters, notched for roof tile apps.		(Steel Colors Below)	26 ga	7¼"	50
	GEC72RC - -	Galv. 7¼" Right End Cap fits Curved style gutters, notched for roof tile apps.		(Steel Colors Below)	26 ga	7¼"	50
	GEC72LCML	Galv. 7¼" Left End Cap fits Curved style gutters, notched for roof tile apps.		Mill	26 ga	7¼"	50
	GEC72RCML	Galv. 7¼" Right End Cap fits Curved style gutters, notched for roof tile apps.		Mill	26 ga	7¼"	50
 <p>CURVED</p>	GFEC525L - -	Galv. 5¼" Left End Cap Seamless Fascia		(Steel Colors Below)	26 ga	5¼"	50
	GFEC525R - -	Galv. 5¼" Right End Cap Seamless Fascia		(Steel Colors Below)	26 ga	5¼"	50
	GFEC725L - -	Galv. 7¼" Left End Cap Seamless Fascia		(Steel Colors Below)	26 ga	7¼"	50
	GFEC725R - -	Galv. 7¼" Right End Cap Seamless Fascia		(Steel Colors Below)	26 ga	7¼"	50
	GEC52LML	Galv. 5¼" Left End Cap fits Fascia & Decco style gutters		Mill	26 ga	5¼"	50
	GEC52RML	Galv. 5¼" Right End Cap fits Fascia & Decco style gutters		Mill	26 ga	5¼"	50
	GEC72LML	Galv. 7¼" Left End Cap fits Fascia & Decco style gutters, notched for roof tile apps.		Mill	26 ga	7¼"	50
	GEC72RML	Galv. 7¼" Right End Cap fits Fascia & Decco style gutters, notched for roof tile apps.		Mill	26 ga	7¼"	50
	PEC5L	Bond. 5" Left End Cap fits K-style gutters		Bond.	26 ga	5¼"	50
	PEC5R	Bond. 5" Right End Cap fits K-style gutters		Bond.	26 ga	5¼"	50
PEC6L	Bond. 6" Left End Cap fits K-Style gutters		Bond.	26 ga	6"	50	
PEC6R	Bond. 6" Right End Cap fits K-Style gutters		Bond.	26 ga	6"	50	
PEC52L	Bond. 5¼" Left End Cap fits Fascia & Decco gutters		Bond.	26 ga	5¼"	50	
PEC52R	Bond. 5¼" Right End Cap fits Fascia & Decco gutters		Bond.	26 ga	5¼"	50	
PEC72L	Bond. 7¼" Left End Cap fits Fascia & Decco style gutters, notched for roof tile apps.		Bond.	26 ga	7¼"	50	
PEC72R	Bond. 7¼" Right End Cap fits Fascia & Decco style gutters, notched for roof tile apps.		Bond.	26 ga	7¼"	50	
PEC72LC	Bond. 7¼" Left End Cap fits Curved style gutters, notched for roof tile apps.		Bond.	26 ga	7¼"	50	
PEC72RC	Bond. 7¼" Right End Cap fits Curved style gutters, notched for roof tile apps.		Bond.	26 ga	7¼"	50	

Rainware & Accessories Colors:

COLOR	CODE	COLOR	CODE	COLOR	CODE	COLOR	CODE	COLOR	CODE
NX ALMOND	AD	COPPER PENNY	CP	HARVEST BROWN	HV*	REDWOOD	RW*	TAHOE BLUE	TA*
ALMOND	AL	COUNTRY BLUE	CU*	NX JEFFERSON TAN	JT	ROSEWOOD	RS	TERRA BRONZE	TB
BEAVER BROWN	BB*	DESERT MAUVE	DM	NX LINEN	LN	ROYAL BROWN	RB*	VICTORIAN GREY	VG*
BLACK	BK*	DESERT SAND	DS*	LINEN	LI	RUSTIC COPPER	M2**	WEATHERED BRONZE	WB
BRONZE	BZ	NX DUNE	CD	MARINE GREEN	MR	NX SAND STONE	SS	WHEAT	WT
BUCKSKIN	BU	EVERGREEN	EG*	MUSKET BROWN	MB	SANDTONE	ST	WICKER	WI*
CAMEO	CA	FROST	FR	NORWEGIAN WOOD	NW	SEA BLUE	S7	30 WHITE	WH*
CHARCOAL GREY	CG*	HARBOR GREY	HG*	PEBBLESTONE CLAY	PC*	NX SIERRA	S1	50 WHITE	50
CLASSIC CREAM	CC*	HERITAGE CREAM	HC	PEACH	PH	SPANISH GREEN	SP	80 WHITE	80

*Available in STEEL (extended lead-time)

**Rustic Copper is a PREMIUM color.



NORANDEX™ Hangers

LODI PLANT

Hidden Hangers

ABH5ML



AHH5ML

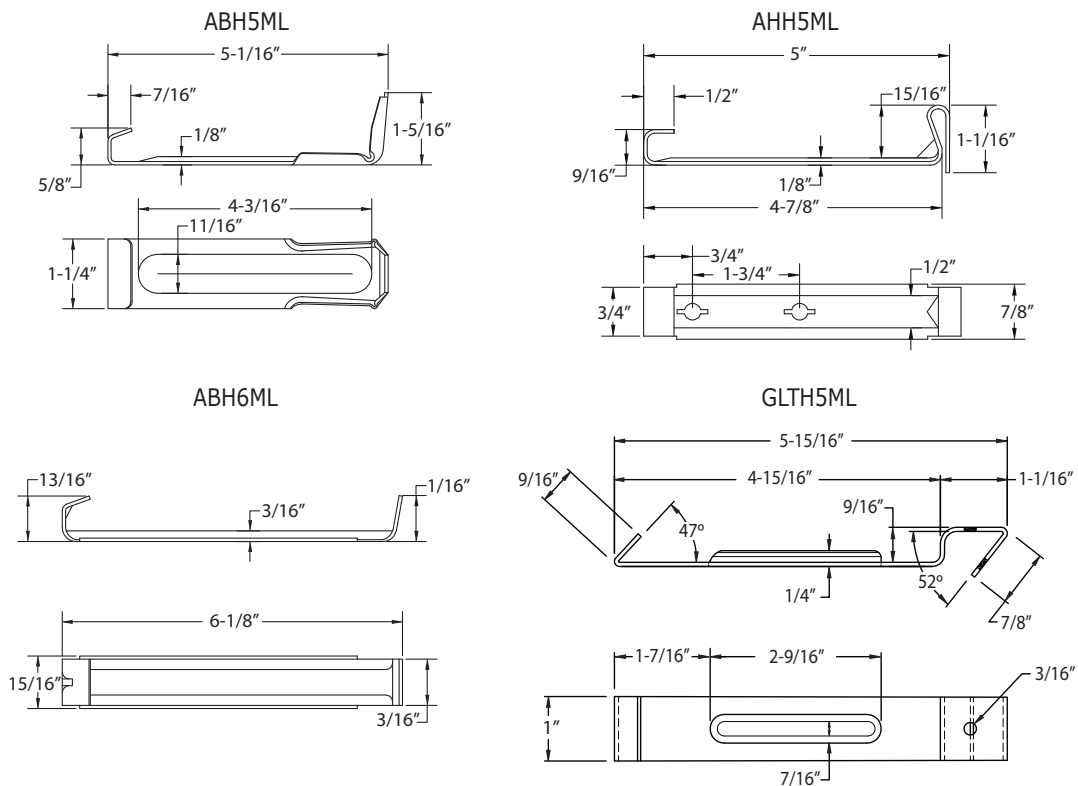


AHT5CML



Part #	Description	Colors	Nom. Gauge/ Thickness	Piece Length	Pieces/ Box
ABH451ML	Alum. 4-1/2" Backless Std. Bar Hanger	Mill	0.060	4-1/2"	100
* ALTH45ML	Alum. 4-1/2" Locktype Hanger	Mill	0.060	4-1/2"	100
ABH51ML	Alum. 5" Backless Std. Bar Hanger	Mill	0.060	5"	100
ABH5ML	Alum. 5" Backless Std. Bar Hanger	Mill	0.060	5"	400
AHH5ML	Alum. 5" Hook Hanger with Clip	Mill	0.060	5"	500
AHT51ML	Alum. 5" Hangtite Hanger	Mill	0.060	5"	100
AHT5ML	Alum. 5" Hangtite Hanger	Mill	0.060	5"	1000
AHT5CML	Alum. 5" Hangtite Hanger with Clip	Mill	0.060	5"	1000
ABH6ML	Alum. 6" Backless Std. Bar Hanger	Mill	0.060	6-1/8"	750
AHH6ML	Alum. 6" Hook Hanger with Clip	Mill	0.060	6"	250
AHT61ML	Alum. 6" Hangtite Hanger	Mill	0.060	6"	100
AHT6CML	Alum. 6" Hangtite Hanger with Clip	Mill	0.060	6"	1000
GBH4ML	Galv. 4" Hidden Hanger	Mill	26 ga	4"	100
GBH451ML	Galv. 4-1/2" Backless Hanger	Mill	26 ga	4-1/2"	100
* GLTH45ML	Galv. 4-1/2" Locktype Hanger	Mill	26 ga	4-1/2"	100
GBH51ML	Galv. 5" Hidden Backless Hanger	Mill	26 ga	5"	100
* GLTH5ML	Galv. 5" Locktype Hanger	Mill	26 ga	5"	100
GBH6ML	Galv. 6" Backless Hanger	Mill	26 ga	6"	100

***NOTE:** Use Locktype hangers with wing-configured gutters.



Hangers w/Screws

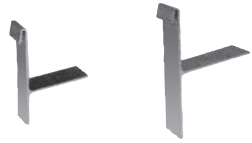
Part #	Description	Colors	Nom. Gauge/ Thickness	Piece Length	Pieces/ Box
AHFSS5ML	Alum. 5" Supreme Hanger w/Screw	Mill	0.060	5"	400
AQSHH5ML	Alum. 5" Quick Screw Hidden Hanger w/Screw	Mill	0.060	5"	500
AQSHH6ML	Alum. 6" Quick Screw Hidden Hanger w/Screw	Mill	0.060	6"	300



NORANDEX™ Hangers

LODI PLANT

T-Wedge Hangers



ATW44ML ATW45MML

Part #	Description	Colors	Nom. Gauge/ Thickness	Pieces/ Bag
ATW44ML	Alum. 5" T-Wedge 4400	Mill	0.070	50
ATW45MML	Alum. 5"-6" T-Wedge 4500	Mill	0.070	50

A T-Wedge can be adjusted to keep the gutter level at various fascia board angles.

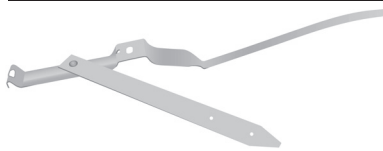
Gutter Wedges



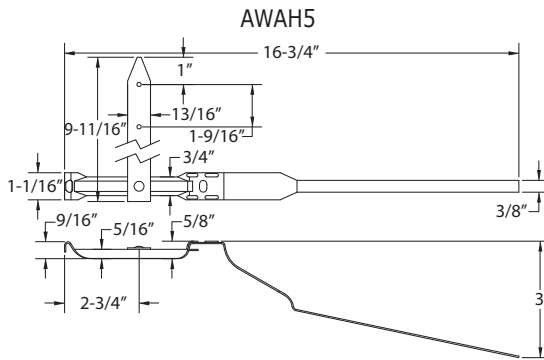
GW5, GW6

Part #	Description	Colors	Nom. Gauge/ Thickness	Pieces/ Box
GW5 - -	Alum. 5" Gutter Wedge	RB, WH	0.027	100
GW6 - -	Alum. 6" Gutter Wedge	RB, WH	0.027	50

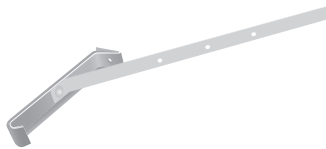
Wrap Around Hangers



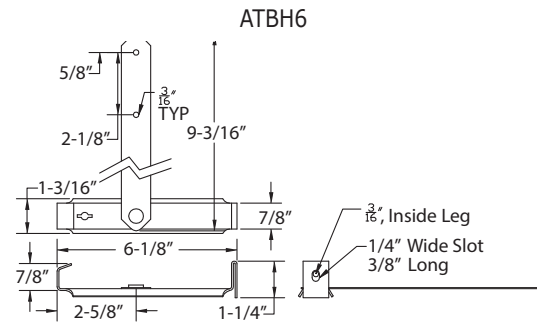
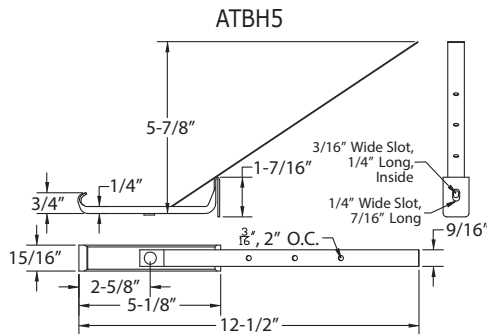
Part #	Description	Colors	Nom. Gauge/ Thickness	Piece Length	Pieces/ Box
AWAH5WH	Alum. 5" Wrap Around Hanger K	WH	0.060	16-3/4"	100



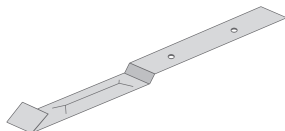
T-Bar Hangers



Part #	Description	Colors	Nom. Gauge/ Thickness	Piece Length	Pieces/ Box
ATBH5ML	Alum. 5" T-Bar Strap Hanger	Mill	0.060	12-1/2"	100
ATBH6WH	Alum. 6" T-Bar Painted Strap Hanger	WH	0.060	6-1/8"	100



Hanger Straps



Part #	Description	Colors	Pieces/ Box
GHK4ML	Galv. 4" Hanger Strap Plain K	Mill	250
GHK5ML	Galv. 5" Hanger Strap Plain K	Mill	250
GHP5ML	Galv. 5-1/4" Hanger Strap Plain	Mill	250
GHK6ML	Galv. 6" Hanger Strap Plain K	Mill	250
GHP7ML	Galv. 7-1/4" Hanger Strap Plain	Mill	250
GHT7ML	Galv. 7-1/4" Hanger Strap Tile	Mill	250



NORANDEX™ Rainware Accessories

LODI PLANT

Ring Shanks (Spikes)					
Part #	Description	Colors	Piece Length	Pieces/Box	
AS7WH	Alum. 7" Ring Shank	WH	7"	500	
AS8WH	Alum. 8" Ring Shank	WH	8"	500	
GS7WH	Galv. 7" Ring Shank	WH	7"	50	

Ferrules					
Part #	Description	Colors	Piece Length	Pieces/Box	
AF5ML	Alum. 5" Ferrule	Mill	5"	500	
AF6ML	Alum. 6" Ferrule	Mill	6"	500	
GF5ML	Galv. 5" Ferrule	Mill	5"	500	
GF6ML	Galv. 6" Ferrule	Mill	6"	500	



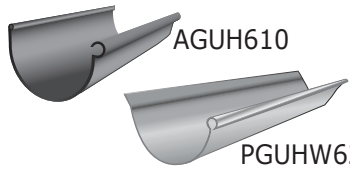


NORANDEX™ Round & Half Round Products

LODI PLANT

Half Round Gutters

Part #	Description	Colors	Nom. Gauge/ Thickness	Piece Length	Pieces/ Box
AGUH610	Alum. 6" H/R Gutter Reverse Bead	BZ, MB, WH	.027	10'	5
AGUH610M2	Alum. 6" H/R Gutter Reverse Bead M2 (Premium Color)		.027	10'	5
PGUHW520	Bond. 5" Half Round Gutter	Bond.	26 ga	20'	Order by the pc.
PGUHW620	Bond. 6" Half Round Gutter	Bond.	26 ga	20'	Order by the pc.
PGUHW625	Bond. 6" Half Round Gutter	Bond.	26 ga	25'	Order by the pc.



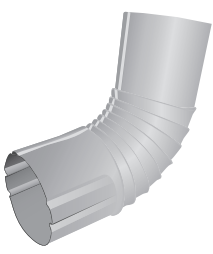
Round Downspouts

Part #	Description	Colors	Nom. Gauge/ Thickness	Piece Length	Pieces/ Box
ADSR210	Alum. D/S 2" Round Pipe 10'	BU, MB, WH	0.019	10'	5
ADSR310	Alum. D/S 3" Round Pipe 10'	(Listed Below)	0.019	10'	5
ADSR310M2	Alum. D/S 3" Round Pipe 10'	M2 (Premium Color)	0.019	10'	5
ADSR310ML	Alum. D/S 3" Round Pipe 10'	Mill	0.019	10'	5
ADSR38	Alum. D/S 3" Round Pipe 8'	(Listed Below)	0.019	8'	5
GDSR210	Galv. D/S 2" Round Pipe 10'	MB, WH	26 ga	10'	10
GDSRP262ML	Galv. D/S 2" Plain Round Pipe 10'	Mill	26 ga	10'	10
GDSRP263ML	Galv. D/S 3" Plain Round Pipe 10'	Mill	26 ga	10'	10
GDSRP264ML	Galv. D/S 4" Plain Round Pipe 10'	Mill	26 ga	10'	10
GDSRP265ML	Galv. D/S 5" Plain Round Pipe 10'	Mill	26 ga	10'	10
PDSRP262	Bond. D/S 2" Plain Round Pipe 10'	Bond.	26 ga	10'	10
PDSRP263	Bond. D/S 3" Plain Round Pipe 10'	Bond.	26 ga	10'	10
PDSRP264	Bond. D/S 4" Plain Round Pipe 10'	Bond.	26 ga	10'	10
PDSRP265	Bond. D/S 5" Plain Round Pipe 10'	Bond.	26 ga	10'	10



Round Elbows

Part #	Description	Colors	Nom. Gauge/ Thickness	Pieces/ Box
AER345	Alum. 3" Round 45°	(Listed Below)	0.019	25
AER3	Alum. 3" Round 75°	(Listed Below)	0.019	25
AER3M2	Alum. 3" Round 75°	M2 (Premium Color)	0.019	25
AER3WBHV	Alum. 3" Round 75°	WB/HV	0.019	25
AER390	Alum. 3" Round 90°	(Listed Below)	0.019	25
GER245ML	Galv. 2" Round 45°	Mill	26 ga	20
GER260ML	Galv. 2" Round 60°	Mill	26 ga	20
GER275ML	Galv. 2" Round 75°	Mill	26 ga	20
GER290ML	Galv. 2" Round 90°	Mill	26 ga	20
GER345ML	Galv. 3" Round 45°	Mill	26 ga	20
GER360ML	Galv. 3" Round 60°	Mill	26 ga	20
GER375ML	Galv. 3" Round 75°	Mill	26 ga	20
GER390ML	Galv. 3" Round 90°	Mill	26 ga	20
GER445ML	Galv. 4" Round 45°	Mill	26 ga	20
GER460ML	Galv. 4" Round 60°	Mill	26 ga	20
GER475ML	Galv. 4" Round 75°	Mill	26 ga	20
GER490ML	Galv. 4" Round 90°	Mill	26 ga	20
PER345	Bond. 3" Round 45°	Bond.	26 ga	20
PER375	Bond. 3" Round 75°	Bond.	26 ga	20
PER390	Bond. 3" Round 90°	Bond.	26 ga	20




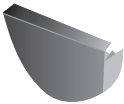
Rainware & Accessories Colors:

COLOR	CODE	COLOR	CODE	COLOR	CODE	COLOR	CODE	COLOR	CODE
NX ALMOND	AD	COPPER PENNY	CP	HARVEST BROWN	HV	REDWOOD	RW	TAHOE BLUE	TA
ALMOND	AL	COUNTRY BLUE	CU	NX JEFFERSON TAN	JT	ROSEWOOD	RS	TERRA BRONZE	TB
BEAVER BROWN	BB	DESERT MAUVE	DM	NX LINEN	LN	ROYAL BROWN	RB	VICTORIAN GREY	VG
BLACK	BK	DESERT SAND	DS	LINEN	LI	RUSTIC COPPER	M2*	WEATHERED BRONZE	WB
BRONZE	BZ	NX DUNE	CD	MARINE GREEN	MR	NX SAND STONE	SS	WHEAT	WT
BUCKSKIN	BU	EVERGREEN	EG	MUSKET BROWN	MB	SANDTONE	ST	WICKER	WI
CAMEO	CA	FROST	FR	NORWEGIAN WOOD	NW	NX SIERRA	SI	30 WHITE	WH
CHARCOAL GREY	CG	HARBOR GREY	HG	PEBBLESTONE CLAY	PC	SEA BLUE	S7	50 WHITE	50
CLASSIC CREAM	CC	HERITAGE CREAM	HC	PEACH	PH	SPANISH GREEN	SP	80 WHITE	80

*Rustic Copper is a PREMIUM color.


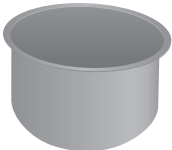


Round Offsets		Part #	Description	Colors	Nom. Gauge/ Thickness	Pieces/ Box
	ABO11R3 - -	Alum. (1pc.) 1" Offset 3" Round	BB, HC, MB, NW, RB, TB, WH, WI, WT	0.019	20	
	ABO12R3 - -	Alum. (1pc.) 2" Offset 3" Round	BB, HC, MB, NW, RB, TB, WH, WI, WT	0.019	20	
	ABO13R3 - -	Alum. (1pc.) 3" Offset 3" Round	BB, HC, MB, NW, RB, TB, WB, WH, WI, WT	0.019	20	
	ABO14R3 - -	Alum. (1pc.) 4" Offset 3" Round	BB, HC, MB, NW, RB, TB, WB, WH, WI, WT	0.019	20	
	ABO15R3 - -	Alum. (1pc.) 5" Offset 3" Round	(Listed Below)	0.019	Order by the pc.	
	ABO16R3 - -	Alum. (1pc.) 6" Offset 3" Round	(Listed Below)	0.019	Order by the pc.	
	ABO12R4M2	Alum. (1pc.) 4" Offset 2" Round	M2 (Premium Color)	0.019	20	
	ABO14R4M2	Alum. (1pc.) 4" Offset 4" Round	M2 (Premium Color)	0.019	20	

Half Round End Caps		Part #	Description	Colors	Nom. Gauge/ Thickness	Pieces/ Box
	AECH6 - -	Alum. 6" Half Round Universal End Cap	*(Listed Below)	0.019	20	
	AECH6M2	Alum. 6" Half Round Universal End Cap	M2 (Premium Color)	0.019	20	
	GECH5ML	Galv. 5" Half Round Universal End Cap	Mill	26 ga	50	
	GECH6ML	Galv. 6" Half Round Universal End Cap	Mill	26 ga	50	

**Not available in these colors: HC, LI, NW, PH, WB, WT*

Round Leader Heads		Part #	Description	Colors	Nom. Gauge/ Thickness	Pieces/ Box
	ALHR3WH	Alum. 3" Round Leader Head - 9 x 7 Opening	WH	0.019	Order by the pc.	
	GLHR3ML	Galv. 3" Round Leader Head - 9 x 7 Opening	Mill	26 ga	Order by the pc.	

Round & H/R Outlets		Part #	Description	Colors	Pieces/ Box
Half Round Outlet		AORO2ML	Alum. 2" Round Outlet	*	100
		AORO238ML	Alum. 2-3/8" Round Outlet	*	250
		AORO234ML	Alum. 2-3/4" Round Outlet	*	250
		AOROH63ML	Alum 3" Half Round Drop Outlet	*	50
Round Outlet		GORO2ML	Galv. 2" Round Drop Outlet	Mill	25
		GORO3ML	Galv. 3" Round Drop Outlet	Mill	50
		GOROH3ML	Galv. 3" Half Round Outlet	Mill	50
		GOROH64	Galv. 4" Round x 6" Half Round Outlet	Mill	50
		GORO25ML	Galv. 2 x 5 Round Drop Outlet	Mill	25
		GORO210ML	Galv. 2 x 10 Round Roof Outlet	Mill	25

***NOTE:** Aluminum outlets made with mill or painted finish per manufacturer's discretion.

Rainware & Accessories Colors:

COLOR	CODE	COLOR	CODE	COLOR	CODE	COLOR	CODE	COLOR	CODE
NX ALMOND	AD	COPPER PENNY	CP	HARVEST BROWN	HV	REDWOOD	RW	TAHOE BLUE	TA
ALMOND	AL	COUNTRY BLUE	CU	NX JEFFERSON TAN	JT	ROSEWOOD	RS	TERRA BRONZE	TB
BEAVER BROWN	BB	DESERT MAUVE	DM	NX LINEN	LN	ROYAL BROWN	RB	VICTORIAN GREY	VG
BLACK	BK	DESERT SAND	DS	LINEN	LI	RUSTIC COPPER	M2*	WEATHERED BRONZE	WB
BRONZE	BZ	NX DUNE	CD	MARINE GREEN	MR	NX SAND STONE	SS	WHEAT	WT
BUCKSKIN	BU	EVERGREEN	EG	MUSKET BROWN	MB	SANDTONE	ST	WICKER	WI
CAMEO	CA	FROST	FR	NORWEGIAN WOOD	NW	NX SIERRA	SI	30 WHITE	WH
CHARCOAL GREY	CG	HARBOR GREY	HG	PEBBLESTONE CLAY	PC	SEA BLUE	S7	50 WHITE	50
CLASSIC CREAM	CC	HERITAGE CREAM	HC	PEACH	PH	SPANISH GREEN	SP	80 WHITE	80

**Rustic Copper is a PREMIUM color.*



NORANDEX™ Round & Half Round Products

LODI PLANT

Leader Straps

Part #	Description	Colors	Nom. Gauge/ Thickness	Pieces/ Box
GDSPBR2ML	Galv. 2" Round Leader Strap	Mill	26 ga	100
GDSPBR3ML	Galv. 3" Round Leader Strap	Mill	26 ga	100
GDSPBR4ML	Galv. 4" Round Leader Strap	Mill	26 ga	100
GDSPBR5ML	Galv. 5" Round Leader Strap	Mill	26 ga	100

Half Round Miters

Part #	Description	Colors	Nom. Gauge/ Thickness	Pieces/ Box
ABYH6IM2	Aluminum 6" 45°, Bay, Inside	M2, M3 (Premium Colors)	0.027	10
ABYH6OM2	Aluminum 6" 45°, Bay, Outside	M2, M3 (Premium Colors)	0.027	10
ASMH6IM2	Aluminum 6" 90°, Strip, Inside	M2, M3 (Premium Colors)	0.027	10
ASMH6OM2	Aluminum 6" 90°, Strip, Outside	M2, M3 (Premium Colors)	0.027	10
GBMH6IML	Galv. 6" Inside Half Round Miter	Mill	26 ga	20
GBMH6OML	Galv. 6" Outside Half Round Miter	Mill	26 ga	20

H/R Hidden Hangers

GHHR6ML



Part #	Description	Colors	Pieces/ Box
AHSHR6ML	Alum. 6" Half Round Hanger w/Screw	Mill	300
GHHR5ML	Galv. 5" Half Round Hanger	Mill	Order by the pc.
GHHR6ML	Galv. 6" Half Round Hanger	Mill	Order by the pc.

Note: Only for reverse bead half round gutters



Copper Products

Part #	Description	Nom. Gauge	Pieces/ Box
CGUH520	Copper 5" x 20' Half Round Gutter	16 oz	Order by the pc.
CGUH620	Copper 6" x 20' Half Round Gutter	16 oz	Order by the pc.
CDS2310	Copper 2 x 3 Corrugated Downspout 10'	16 oz	Order by the pc.
CDSR310	Copper 3" x 10' Round Downspout	16 oz	Order by the pc.
CDSR410	Copper 4" x 10' Round Downspout	16 oz	Order by the pc.
CAE23	Copper 2 x 3 A Corrugated Elbow	16 oz	Order by the pc.
CBE23	Copper 2 x 3 B Corrugated Elbow	16 oz	Order by the pc.
CAE34	Copper 3 x 4 A Corrugated Elbow	16 oz	Order by the pc.
CBE34	Copper 3 x 4 B Corrugated Elbow	16 oz	Order by the pc.
CER345	Copper 3" Round Elbow 45°	16 oz	Order by the pc.
CER375	Copper 3" Round Elbow 75°	16 oz	Order by the pc.
CER475	Copper 4" Round Elbow 75°	16 oz	Order by the pc.
CERC3	Copper 3" x 10' Corrugated Round Elbow	16 oz	Order by the pc.
CERC4	Copper 4" x 10' Corrugated Round Elbow	16 oz	Order by the pc.
CBO1323A	Copper 2 x 3 - 3" A Offset	10 oz	Order by the pc.
CBO1323B	Copper 2 x 3 - 3" B Offset	10 oz	Order by the pc.
CCH3	Copper 3" Conductor Head	16 oz	Order by the pc.
CCH4	Copper 4" Conductor Head	16 oz	Order by the pc.
COOV2	Copper 2" Oval Outlet	16 oz	Order by the pc.
COOV3	Copper 3" Oval Outlet	16 oz	Order by the pc.
COROH63	Copper 3" Half Round Outlet	16 oz	Order by the pc.
COROH64	Copper 4" Half Round Outlet	16 oz	Order by the pc.
CDSPB34	Copper 3 x 4 Leader Strap	10 oz	Order by the pc.
CDSPBU	Copper Universal Downspout Band	16 oz	Order by the pc.
CBM5I	Copper 5" Inside Box Miter	16 oz	Order by the pc.
CBM5O	Copper 5" Outside Box Miter	16 oz	Order by the pc.
CBMH5I	Copper 5" Inside Half Round Box Miter	16 oz	Order by the pc.
CBMH5O	Copper 5" Outside Half Round Box Miter	16 oz	Order by the pc.
CBMH6I	Copper 6" Inside Half Round Box Miter	16 oz	Order by the pc.
CBMH6O	Copper 6" Outside Half Round Box Miter	16 oz	Order by the pc.
CEC5L	Copper 5" Left End Cap	16 oz	Order by the pc.
CEC5R	Copper 5" Right End Cap	16 oz	Order by the pc.
CECH5	Copper 5" Half Round End Cap	10 oz	Order by the pc.
CECH6	Copper 6" Half Round End Cap	10 oz	Order by the pc.
CGCSCNB5	Copper 5" Half Round Gutter Hanger SB	16 oz	Order by the pc.
CGCSCNB6	Copper 6" Half Round Gutter Hanger SB	16 oz	Order by the pc.
CHRSHK30	Copper #30 Shank Half Round Gutter Hanger	16 oz	Order by the pc.
CHHR5CC	Copper 5" #10 Hanger Combo w/Clip	16 oz	Order by the pc.
CHHR6CC	Copper 6" #10 Hanger Combo w/Clip	16 oz	Order by the pc.
CRRNHR5	Copper 5" Half Round Regal SB Bar Hanger	16 oz	Order by the pc.
CRRNHR6	Copper 6" Half Round Regal SB Bar Hanger	16 oz	Order by the pc.
CPR	Copper Pop Rivets	--	100



Copper Half Round Gutter



Copper Round Downspout



Copper Round Elbow



Half Round End Cap



NORANDEX™ Drain Guard & Gutter Protection LODI PLANT

Drain Guard

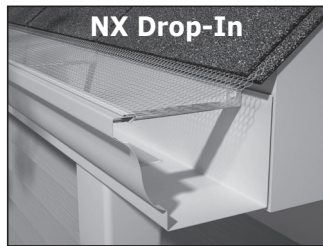


Drain Guard

Rectangular style, wall-mount with removable basket.

Part #	Description	Colors	Pieces/ Box	Pieces/ Pallet
ALDG23 - -	Alum. 2 x 3 Drain Guard	WH, BR	25	375
ALDG34WH	Alum. 3 x 4 Drain Guard	WH	25	375

Screen Systems



NX Drop-In

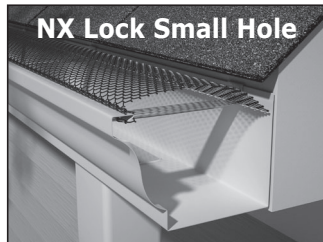
The front attachment provides a firm hold to the front of the gutter and has a wide mounting flange for a permanent install. The mill finish aluminum screen is micro crimped for enhanced durability.

Part #	Description	Colors	Nom. Gauge/ Thickness	Piece Length	Pieces/ Box	Feet/ Box
ALGP5DIML	Alum. 5" Drop-In	Mill	0.025	4'	50	200'
ALGP6DIML	Alum. 6" Drop-In	Mill	0.025	4'	50	200'

Powder Coated Screens

Our special powder coating is designed to uniformly cover all surfaces and contains UV inhibitors for extra durability. The coating is distinguished by the smooth feel of the finish.

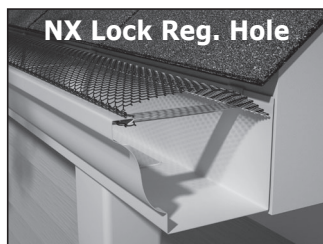
Conventional powder finishes don't coat the entire mesh which leads to corrosion and product failure. You can easily identify these products because they feel rough due to the inconsistency of the coating on the surface of the screen.



NX Lock Small Hole

The small hole screen system installs quickly without disturbing the shingles with its front and back snap lock system.

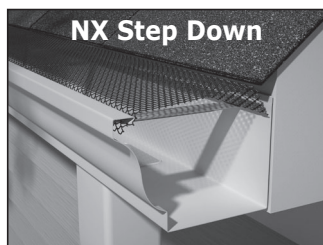
Part #	Description	Colors	Nom. Gauge/ Thickness	Piece Length	Pieces/ Box	Feet/ Box
GGP5LSHBK	Galv. 5" Lock Small Hole	BK	28 ga	4'	25	100'
GGP6LSHBK	Galv. 6" Lock Small Hole	BK	28 ga	4'	25	100'



NX Lock Regular Hole

The regular hole screen system installs quickly without disturbing the shingles with its front and back snap lock system.

Part #	Description	Colors	Nom. Gauge/ Thickness	Piece Length	Pieces/ Box	Feet/ Box
GGP5LRHBK	Galvanized 5" Lock Regular Hole	BK	28 ga	4'	25	100'
GGP6LRHBK	Galvanized 6" Lock Regular Hole	BK	28 ga	4'	25	100'



NX Step Down

The small hole screen incorporates a raised snap-in system in the back of the gutter to seal off the void between the shingles and the screen. Step Down installs quickly without the use of screws or disturbing the shingles.

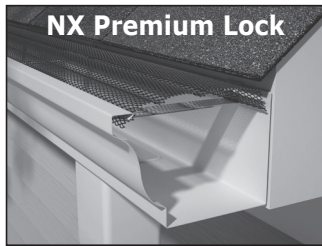
Part #	Description	Colors	Nom. Gauge/ Thickness	Piece Length	Pieces/ Box	Feet/ Box
GGP5SDBK	Galv. 5" Step Down	BK	28 ga	4'	25	100'
GGP6SDBK	Galv. 6" Step Down	BK	28 ga	4'	25	100'



NORANDEX™ Gutter Protection

LODI PLANT

Screen Systems (cont.)



NX Premium Lock

The tiny holes keeps out small debris, while allowing water to flow through the screen. Two stiffening beads run down the center of the screen for added strength. Installation is quick and easy without disturbing the shingles. The screen locks into place with a raised back and front-tiered mounting system.

Part #	Description	Colors	Nom. Gauge/ Thickness	Piece Length	Pieces/ Box	Feet/ Box
ALGP5PLBK	Alum. 5" Premium Lock	BK	0.032	4'	25	100'
ALGP6PLBK	Alum. 6" Premium Lock	BK	0.032	4'	25	100'

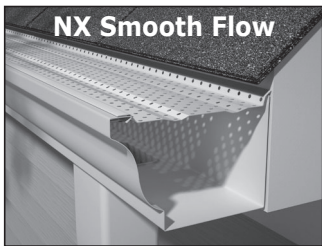


NX Deluxe Half Round

Spring tension design holds this gutter screen in place. Snaps in and out of half round gutters for easy cleaning. 28 gauge steel stands tough under a full load of wet leaves without collapsing. Installs with a slope toward the front to help debris slide off.

Part #	Description	Colors	Nom. Gauge/ Thickness	Piece Length	Pieces/ Box	Feet/ Box
GLGEZ6DH	Galv. 6.5" Deluxe half Round	BK	28 ga	4'	25	100'

Perforated & Dome



NX Smooth Flow

The perforated cover installs easily without disturbing the shingles. Product is factory notched for easy overlapping. Dual center ribbed bends provide extra rigidity against expansion and contraction. Six 50-count bags of #6 hex head 3/8 stainless steel painted screws are included.

Part #	Description	Colors	Nom. Gauge/ Thickness	Piece Length	Pieces/ Box	Feet/ Box
ALGP5SF - -	Alum. 5" Smooth Flow	BK, WH, ML	.019	6'	40	240'
ALGP6SF - -	Alum. 6" Smooth Flow	BK, WH, ML	.019	6'	40	240'



NX Master Flow

The snap in perforated panels are installed without disturbing the shingles and without the use of screws. The patented curved back portion keeps the contoured front mounting system in place, provides a gentle transition of rainwater on to the panel, blocks debris from depositing in the back of the gutter, and is not obstructed by screw hangers.

Part #	Description	Colors	Nom. Gauge/ Thickness	Piece Length	Pieces/ Box	Feet/ Box
ALGP5MFBK	Alum. 5" Master Flow	BK	.019	4'	25	100'
ALGP6MFBK	Alum. 6" Master Flow	BK	.019	4'	25	100'



NX Snap-In Dome Cover

This unique solid dome cover is designed for maximum debris load and is one of the easiest dome cover systems to install. The dome cover snaps in without the use of brackets or screws and doesn't disturb the shingles. Snap-In Dome is available in several colors to enhance the curb appeal of your home by blending in with the roof line.

Part #	Description	Colors	Nom. Gauge/ Thickness	Piece Length	Pieces/ Box	Feet/ Box
ALGP5SD - -	Alum. 5" Snap-In Dome	BK, RB, TB, WH	.028	4'	14	56'
ALGP6SD - -	Alum. 6" Snap-In Dome	BK, RB, TB, WH	.028	4'	14	56'

Gutter Protection Colors:

COLOR	CODE	COLOR	CODE	COLOR	CODE	COLOR	CODE	COLOR	CODE
BLACK	BK	ROYAL BROWN	RB	TERRA BRONZE	TB	WHITE		MILL	ML

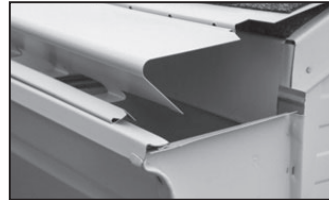
Gutter Protection

LODI PLANT

Gutter Protection		Part #	Description	Colors	Nom. Gauge/ Thickness	Piece Length	Pieces/ Box
Gutter Protection							
ALGLFH5	- -	Alum. 5"/6" Perforated High-Flow Gutter Cover with Screws 4'	AL, BK, CC, CL, DB, EG, IV, MB, PL, RB, S1, TB, TX, WH	0.024	4'	5	
ALGLFS5	- -	Alumi. 5"/6" Standard Solid Gutter Cover with Screws 4'	AL, BK, CC, CL, DB, EG, IV, MB, PL, RB, S1, TB, TX, WH	0.024	4'	25	
ALGRX5	- -	Alum. 5" Drop-In Cover 6'	DB, WH	0.019	6'	50	
ALGRX6	- -	Alum. 6" Drop-In Cover 6'	DB, WH	0.019	6'	50	



ALGLFH5 High Flow



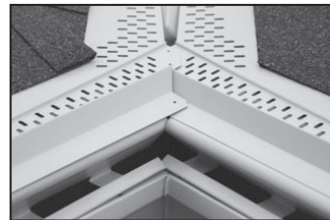
ALGLFS5 Solid



ALGRX5 Drop-In

Gutter Protection Accessories

ALGLFM5	- -	Alum. Miters (set - 1 Left & 1 Right)	AL, BK, CC, CL, DB, EG, MB, PL, RB, S1, TB, TX, WH	0.024		10
ALGLFE5R	- -	Alum. End Caps (Right)	AL, BK, CC, CL, DB, EG, MB, PL, RB, S1, TB, TX, WH	0.024	5"	25
ALGLFE5L	- -	Alum. End Caps (Left)	AL, BK, CC, CL, DB, EG, MB, PL, RB, S1, TB, TX, WH	0.024	5"	25



ALGLFM5 Miters



ALGLFE5 R/L End Caps

Gutter Protection Colors:

COLOR	CODE	COLOR	CODE	COLOR	CODE	COLOR	CODE	COLOR	CODE
ALMOND	AL	CLAY	CL	IVORY	IV	ROYAL BROWN	RB	TUXEDO GRAY	TX
BLACK	BK	DARK BRONZE	DB	MUSKET BROWN	MB	SAND	S1	30 WHITE	WH
CLASSIC CREAM	CC	EVERGREEN	EG	PEARL GRAY	PL	TERRA BRONZE	TB		

Trim Coil Offering

LODI PLANT

Trim Coil	Description	Piece Length	Pieces/ Box	Boxes/ Pallet	Pieces/ Pallet	Rolls/ Truck
	.019 Aluminum Trim Coil	50'	1	48	48	1248

Unless otherwise stated, all Smooth and Wood Grain trim coil is white (W1) on the opposite side.

NORANDEX™ Smooth

ATCS24 - - Aluminum 24" Smooth

NORANDEX™ No. Pine Embossed

ATCW24 - - Aluminum 24" Embossed

NORANDEX™ PVC

ATCP24 - - Aluminum 24" PVC

Norandex™ Trim Coil Colors

COLOR	CODE	COLOR	CODE	COLOR	CODE	COLOR	CODE	COLOR	CODE
NX ALMOND	D49	NX DOVE GREY	A26	NX IVY GREEN	G13	NX OLIVE	G14	NX SMOKE	A21
NX BEIGE	D52	NX DUNE	D54	NX KHAKI	D59	NX ROYAL BROWN	B6	NX STEEL BLUE	L8
BRONZE	B13	NX EVERGREEN	G15	NX LINEN	W10	NX RUSSETT	B18	NX TAN	D48
NX CACTUS	G16	NX FERN	A24	NX MAVERICK BROWN**	B20	NX SAND	D51	NX TUMBLEWEED TAN	D55
NX CHAMPAGNE	D53	NX FIREBRICK	R6	NX MOCHA	D58	NX SAND STONE	D46	NX WEDGEWOOD BLUE	L7
CLAY	D43	NX GENEVA BLUE	L9	NX MUSKET BROWN	B1	NX SEAPORT	A22	NX WHEAT	D50
NX COBBLESTONE CLAY	D56	NX GRANITE	A19	NX MYRTLE	G17	NX SIERRA	D47	WHITE	W1
NX CREAM	D22	NX GRAPHITE**	A25	NORWEGIAN WOOD**	D26	NX SILVER	A3	NX YELLOW**	Y4
NX DEEP WATER	L10								

**Not available in PVC: A25, B20, D26, Y4

MASTIC Smooth

ATCS24 - - Aluminum 24" Smooth

MASTIC No. Pine Embossed

ATCW24 - - Aluminum 24" NP Embossed

MASTIC PVC

ATCP24 - - Aluminum 24" PVC

Mastic Trim Coil Comparable Colors / ● = Designer Collection Color Thru System™ (smooth only)

COLOR	CODE	COLOR	CODE	COLOR	CODE	COLOR	CODE	COLOR	CODE
● ALMOND*	D14	CORN SILK*	D24	LAKESHORE FERN*	G2	REDWOOD*	R3	SILVER GREY	A3
AUTUMN HARVEST*	B11	DEEP GRANITE*	A9	● LINEN	D4	● ROYAL BROWN	B6	● TERRA BRONZE	B12
● BLACK*	A17	● DESERT SAND	D34	MISTY SHADOW*	A10	RUGGED CANYON*	B9	● VICTORIAN GREY	A5
BROOKSTONE	D21	ENGLISH WEDGEWOOD*	A11	MONTANA SUEDE*	D44	RUSSET RED*	R4	VINEYARD GROVE*	G7
● CAMEO	W2	EVEREST	A15	● MUSKET BROWN	B1	SAGE*	D25	● WHITE	W1
● CHARCOAL GREY*	A8	● EVERGREEN	G6	● PEBBLESTONE CLAY	D5	● SANDTONE	D6	● WICKER	D8
● CLASSIC CREAM	D22	● HARBOR GREY	A2	QUIET WILLOW*	G12	SCOTTISH THISTLE	G9		

*Not available in PVC: D14, B11, A17, A8, D24, A9, A11, G2, A10, D44, G12, R3, B9, R4, D25, G7

HARDIE Smooth

ATCS24 - - Aluminum 24" Smooth

HARDIE No. Pine Embossed

ATCW24 - - Aluminum 24" NP Embossed

Hardie Trim Coil Comparable Colors:

COLOR	CODE	COLOR	CODE	COLOR	CODE
ARCTIC WHITE/WOODSTOCK BROWN	C2	HEATHERED MOSS/BOOTHBAY BLUE	C9	MOUNTAIN SAGE/LIGHT MIST	C10
CHESTNUT BROWN/EVENING BLUE	C8	IRON GREY/COUNTRYLANE RED	C7	SAND STONE BEIGE (PVC only)	D15

TEXTURED, MAR-RESISTANT WINDOW TRIM COIL

ATCT24 - - Aluminum 24" Textured

Window Trim Coil Colors:

COLOR	CODE	COLOR	CODE	COLOR	CODE
CLAY	D39	TAN	D38	WHITE	W4



NORANDEX™ Soffit, F-Channel, & J-Channel

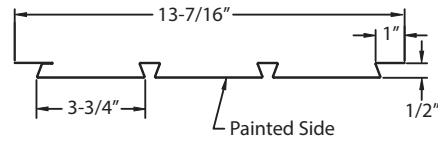
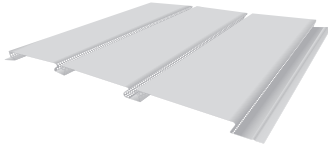
LODI PLANT

12" Hidden Vent Soffit

Part #	Description	Colors	Nom. Gauge/ Thickness	Piece Length	Pieces/ Box	Boxes/ Pallet	Pieces/ Pallet
--------	-------------	--------	-----------------------	--------------	-------------	---------------	----------------

AST12HVWH	Alum. 12" Hidden Vent Soffit	WH	0.019	12'	16	24	384
-----------	------------------------------	----	-------	-----	----	----	-----

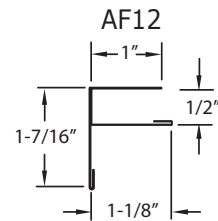
NOTE: Requires 1/2" J- or F-Channel for installation.



F-Channel

Part #	Description	Colors	Nom. Gauge/ Thickness	Piece Length	Pieces/ Box	Boxes/ Pallet	Pieces/ Pallet
--------	-------------	--------	-----------------------	--------------	-------------	---------------	----------------

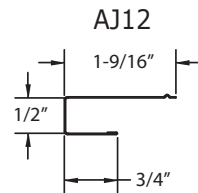
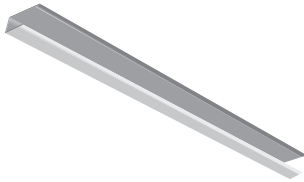
AF12WH	Alum. 1/2" F-Channel	WH	0.019	12'	25	24	600
--------	----------------------	----	-------	-----	----	----	-----



J-Channel

Part #	Description	Colors	Nom. Gauge/ Thickness	Piece Length	Pieces/ Box	Boxes/ Pallet	Pieces/ Pallet
--------	-------------	--------	-----------------------	--------------	-------------	---------------	----------------

AJ12WH	Alum. 1/2" J-Channel	WH	0.019	12'	25	24	600
--------	----------------------	----	-------	-----	----	----	-----





NORANDEX™

ALUMINUM LIFETIME WARRANTY

ALUMINUM RAINWARE, SIDING ACCESSORIES, SOFFIT, FASCIA & TRIM COIL



Buy Norandex™ products with confidence knowing that:

- Norandex™ aluminum products carry a limited lifetime warranty.
- Material and Labor is covered.
- Transferrable at no charge.
- Doesn't require registration.

Norandex™ manufactures Aluminum Soffit, Aluminum Siding & Soffit Accessories, Aluminum Trim Coil, Aluminum Fascia (the "Products"), Aluminum Gutter Coil, and Rainware Accessories in accordance with high standards and tight quality controls. The Products will not rust, burn or support combustion, or split or crack due to cold weather because they are made of aluminum.

WHAT DOES THIS WARRANTY COVER?

Norandex™ warrants to you, the owner of the property at the time the Products were installed, that the Products are free from defects in material and workmanship in the course of manufacture, and that the finish on the Products will not chip, peel, flake or blister under conditions of ordinary wear, if installed according to local building codes and industry specifications. This Warranty is limited to the terms and conditions, exclusions and limitations, requirements and legal rights stated in this Warranty.

HOW LONG DOES THE COVERAGE LAST?

If you are an individual, this Limited Lifetime Warranty lasts for the life of the property on which the Products were originally applied ("Property") for as long as you own the Property. If you are not an individual (e.g., you are a corporation, condominium, cooperative housing arrangement, unincorporated association, school, church, government or public entity, etc.), the warranty period will be 50 years from the date of original installation of the Products on the Property, prorated as outlined in the Warranty Coverage Schedule contained within. This Limited Lifetime Warranty may be transferred with the Property. However, upon the transfer, the warranty period will be no more than 50 years from the date of original installation of the Products on the Property, prorated in accordance with the Warranty Coverage Schedule contained within.

WHAT WILL WE DO?

You must notify us in accordance with the notice requirements outlined below, and we must validate the complaint. In the event the manufacturer is denied access for an inspection, this warranty is null and void. Upon the notification and validation, we will undertake the following:

We will repair, replace or refund the purchase and installation price of the defective portion of our product that blisters, checks, crazes, flakes, peels or weathers unevenly due to a defect in our manufacturing process. Our obligations under this warranty will in no event exceed the purchase price of the originally installed Products found to be warrantable and the cost of the labor involved in the original installation of such defective Products. Any additional costs and expenses beyond these amounts are your responsibility. Norandex™ will not pay or be responsible for any costs associated with or related to anything else affixed to the Material or building's roof, including but not limited to solar panels, television antennas, moisture sensors, etc.

In the event of repair, replacement or refinishing under this Warranty, the Warranty applicable to the replacement material or to the repaired or refinished Products will extend only for the time remaining under the original Warranty.

If we elect to repair or replace Product under this warranty, we will also cover the reasonable labor costs for the applicable area, as determined by us.

WHAT DOESN'T THIS WARRANTY COVER?

This Warranty does not cover damage of any kind resulting from:

- Product that is stored in situations where standing water is covering the surface for prolonged period of time;
- Faulty or improper contractor fabrication or installation, including "oil canning" waving, buckling, or other distortions;
- Installation of our Product in direct contact with dissimilar materials as discussed in the final section of this warranty;
- Cracking or crazing of the Product's paint surface due to field forming of Products in cold temperatures; or
- Changes in surface color resulting from chalking, fading, soiling or staining. Exposure to the elements may cause these changes over time;

the degree to which weathering occurs will vary depending on air quality, the building's location and other local conditions over which we have no control;

- accidental damage;
- settlement;
- structural shrinkage or distortion of the property structure;
- fire;
- lightning, hurricane, tornado, windstorm, earthquake, volcanoes, hail, or other acts of God;
- harmful chemicals (including harmful cleaning compounds and pesticides);
- fumes, volcanic smog, or vapors; Warranty does not cover material within 30 miles of volcano.
- surface deterioration due to air pollution or seacoast environment (no coverage if product installation is within 1500 feet of seacoast);
- misuse or abuse;
- vandalism;
- airborne stains, mold and mildew accumulation;
- your failure (or the failure of subsequent Property owners) to provide reasonable and necessary maintenance of the Products (see "Care and Maintenance Instructions");
- impact of foreign objects;
- warping or distortion due to exposure to excessive heat sources (e.g., barbecue grills) or exposure to unusual or excessive reflective heat sources (e.g., window reflection);
- Products that have been painted or whose surface has been altered in any way will void the paint finish warranty;
- any other causes beyond our reasonable control; or
- Corrosion caused by contact with dissimilar materials, treated lumber, or direct salt spray.

OTHER LIMITATIONS

1. This Warranty covers only genuine Norandex™, Aluminum Soffit, Aluminum Siding & Soffit Accessories, select Aluminum Trim Coil, Aluminum Fascia, and Aluminum Gutter Coil & Rainware Accessories. It is your responsibility to verify that the soffit, fascia, and accessories installed are our Products. For Trim Coil, we require written proof it is Norandex™ product. Our products are warranted in the continental United States, Hawaii, and Alaska.

2. Products are designed and intended for use as small flashings and water diverters, and should not be used as roofing material.

3. Due to normal weathering, replacement Products may differ in gloss and color from Products originally installed on the Property.

4. We reserve the right to discontinue or change any design or color of any of our products at any time and without notice or liability. If, for any reason, Products of the type originally installed are no longer available from us at the time you make a warranty claim, we may substitute another product determined by us to be of comparable quality and price.

5. There are no warranties on these Products other than as set forth in this Warranty. We are not liable to you for a breach of any other written or oral express warranties, such as those, if any, given to you by dealers, contractors, applicators, or distributors of the Products.

6. WE EXCLUDE AND ARE NOT RESPONSIBLE FOR ANY CONSEQUENTIAL OR INCIDENTAL DAMAGES ARISING OUT OF ANY BREACH OF THIS EXPRESSED WARRANTY, OR ANY OTHER ORAL, WRITTEN OR IMPLIED WARRANTY THAT MAY APPLY TO YOUR PURCHASE, AS IT RELATES TO OUR PRODUCTS.

THIS IS YOUR EXCLUSIVE WARRANTY AND IS IN LIEU OF ALL OTHER WARRANTIES, EXPRESSED OR IMPLIED, INCLUDING BUT NOT LIMITED TO IMPLIED WARRANTIES OF MERCHANTABILITY AND FITNESS FOR A PARTICULAR PURPOSE.

7. This Warranty gives you specific legal rights. You may also have other rights which vary from state to state. SOME STATES DO NOT ALLOW THE EXCLUSION OR LIMITATION OF INCIDENTAL OR CONSEQUENTIAL DAMAGES, SO THE ABOVE LIMITATION OR EXCLUSION MAY NOT APPLY TO YOU.

(Complete Aluminum Warranty available upon request)



STEEL RAINWARE AND ACCESSORIES



Buy Norandex™ products with confidence knowing that:

- Norandex™ steel rainware products carry a limited lifetime warranty.
- Material and Labor is covered.
- Doesn't require registration.

Norandex™ manufactures Steel Rainware & Accessories including Gutter Coil in accordance with high standards and tight quality controls. The Products will not burn or support combustion, or split or crack due to cold weather because they are made of steel.

WHAT DOES THIS WARRANTY COVER?

Norandex™ warrants to you, the owner of the property at the time the Products were installed, that the Products are free from defects in material and workmanship in the course of manufacture, and that the finish on the Products will not chip, peel, flake or blister under conditions of ordinary wear, if installed according to local building codes and industry specifications. This warranty excludes any areas of the material that are within 3/4" of any edge that has been cut subsequent to the application of the paint to the substrate. This Warranty is limited to the terms and conditions, exclusions and limitations, requirements and legal rights stated in this Warranty.

HOW LONG DOES THE COVERAGE LAST?

If you are an individual, this Limited Lifetime Warranty lasts for the life of the property on which the Products were originally applied ("Property") for as long as you own the Property. If you are not an individual (e.g., you are a corporation, condominium, cooperative housing arrangement, unincorporated association, school, church, government or public entity, etc.), the warranty period will be 50 years from the date of original installation of the Products on the Property, prorated as outlined in the Warranty Coverage Schedule contained within. This Limited Lifetime Warranty is limited to the original owner. Coverage will be 100% for ten years after the installation and prorated after that period. See Warranty Coverage Schedule section for details of prorated coverage.

WHAT WILL WE DO?

You must notify us in accordance with the notice requirements outlined below, and we must validate the complaint. In the event the manufacturer is denied access for an inspection, this warranty is null and void. Upon the notification and validation, we will undertake the following:

We will repair, replace or refund the purchase and installation price of the defective portion of our product that blisters, checks, crazes, flakes, peels or weathers unevenly due to a defect in our manufacturing process. Our obligations under this warranty will in no event exceed the purchase price of the originally installed Products found to be warrantable and the cost of the labor involved in the original installation of such defective Products. Any additional costs and expenses beyond these amounts are your responsibility. Norandex™ will not pay or be responsible for any costs associated with or related to anything else affixed to the Material or building's roof, including but not limited to solar panels, or television antennas, moisture sensors, etc.

In the event of repair, replacement or refinishing under this Warranty, the Warranty applicable to the replacement material or to the repaired or refinished Products will extend only for the time remaining under the original Warranty.

If we elect to repair or replace Product under this warranty, we will also cover the reasonable labor costs for the applicable area, as determined by us.

WHAT DOESN'T THIS WARRANTY COVER?

This Warranty does not cover damage of any kind resulting from:

- Product that is stored in situations where standing water is covering the surface for prolonged period of time;
- Faulty or improper installation, including "oil canning" waving, buckling, or other distortions;
- Installation of our Product in direct contact with dissimilar materials as discussed in the final section of this warranty;
- Cracking or crazing of the Product's paint surface due to field forming of Products in cold temperatures; or material that has bends less than 2T for a sheet thickness of 0.0299" and thinner and bends less than 4T for a sheet thickness of 0.0300" and thicker.

- Changes in surface color resulting from chalking, fading, soiling or staining. Exposure to the elements may cause these changes over time; the degree to which weathering occurs will vary depending on air quality, the building's location and other local conditions over which we have no control;
- accidental damage;
- settlement;
- structural shrinkage or distortion of the property structure;
- fire;
- lightning, hurricane, tornado, windstorm, earthquake, hail, or other acts of God;
- harmful chemicals (including harmful cleaning compounds and pesticides);
- fumes, volcanic smog, or vapors; Warranty for material is not given within 30 miles of volcano.
- surface deterioration due to air pollution or seacoast environment; (no Warranty if installed product is within 1 mile of seacoast.)
- misuse or abuse;
- vandalism;
- airborne stains, mold and mildew accumulation;
- your failure (or the failure of subsequent Property owners) to provide reasonable and necessary maintenance of the Products (see "Care and Maintenance Instructions");
- impact of foreign objects;
- warping or distortion due to exposure to excessive heat sources (e.g., barbecue grills) or exposure to unusual or excessive reflective heat sources (e.g., window reflection);
- Products that have been painted or whose surface has been altered in any way will void the paint finish warranty;
- any other causes beyond our reasonable control; or
- Corrosion caused by contact with dissimilar materials, treated lumber, or direct salt spray.

OTHER LIMITATIONS

1. This Warranty covers only genuine Norandex™ Steel Rainware and Accessories, including Gutter Coil. It is your responsibility to verify that the rainware and accessories installed are our Products. Our products are warranted in the continental United States, Hawaii, and Alaska.
2. Products are designed and intended for use as small flashings and water diverters, and should not be used as roofing material.
3. Due to normal weathering, replacement Products may differ in gloss and color from Products originally installed on the Property.
4. We reserve the right to discontinue or change any design or color of any of our products at any time and without notice or liability. If, for any reason, Products of the type originally installed are no longer available from us at the time you make a warranty claim, we may substitute another product determined by us to be of comparable quality and price.
5. There are no warranties on these Products other than as set forth in this Warranty. We are not liable to you for a breach of any other written or oral express warranties, such as those, if any, given to you by dealers, contractors, applicators, or distributors of the Products.
6. WE EXCLUDE AND ARE NOT RESPONSIBLE FOR ANY CONSEQUENTIAL OR INCIDENTAL DAMAGES ARISING OUT OF ANY BREACH OF THIS EXPRESSED WARRANTY, OR ANY OTHER ORAL, WRITTEN OR IMPLIED WARRANTY THAT MAY APPLY TO YOUR PURCHASE, AS IT RELATES TO OUR PRODUCTS. THIS IS YOUR EXCLUSIVE WARRANTY AND IS IN LIEU OF ALL OTHER WARRANTIES, EXPRESSED OR IMPLIED, INCLUDING BUT NOT LIMITED TO IMPLIED WARRANTIES OF MERCHANTABILITY AND FITNESS FOR A PARTICULAR PURPOSE.
7. This Warranty gives you specific legal rights. You may also have other rights which vary from state to state. SOME STATES DO NOT ALLOW THE EXCLUSION OR LIMITATION OF INCIDENTAL OR CONSEQUENTIAL DAMAGES, SO THE ABOVE LIMITATION OR EXCLUSION MAY NOT APPLY TO YOU.

(Complete Steel Warranty available upon request)



NORANDEX™

EXTERIOR PRODUCTS FOR YOUR HOME

Southern California Rainware Colors



Frost



30 White - Flat



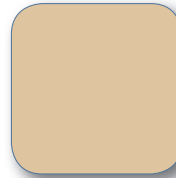
50 White - Textured



80 White - Gloss



Pebblestone Clay



Sandtone



Norwegian Wood



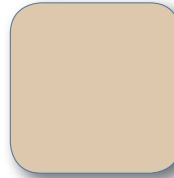
Almond



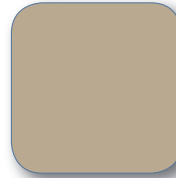
Heritage Cream



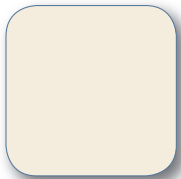
Classic Cream



Desert Sand



Wicker



Linen



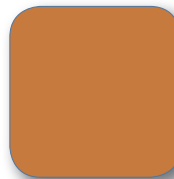
Cameo



Wheat



Terra Bronze



Copper Penny



Bronze



RUSTIC COPPER
(Premium Color)



Harvest Brown



Musket Brown



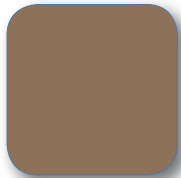
Royal Brown



Beaver Brown



Weathered Bronze



Buckskin



Black



Evergreen



Spanish Green



Marine Green



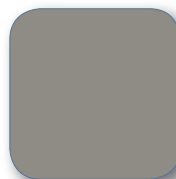
Redwood



Rosewood



Charcoal Grey



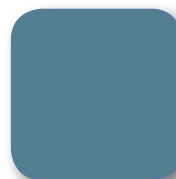
Harbor Grey



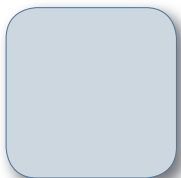
Victorian Grey



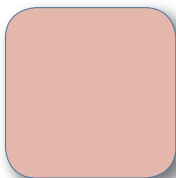
Tahoe Blue



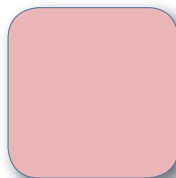
Country Blue



Sea Blue



Peach



Desert Mauve

**Note:
Actual colors
may vary
from finished
product.*

PROUDLY FINISHED WITH
SHERWIN-WILLIAMS®
Coil Coatings



NORANDEX™

EXTERIOR PRODUCTS FOR YOUR HOME

Northern California Rainware Colors



Frost



*30 White - Flat



50 White - Textured



80 White - Gloss



*Pebblestone Clay



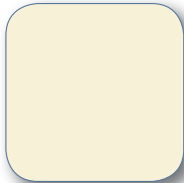
Sandtone



Norwegian Wood



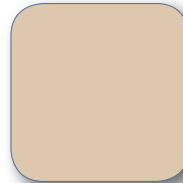
Almond



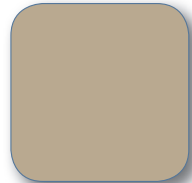
Heritage Cream



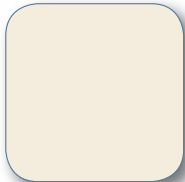
*Classic Cream



*Desert Sand



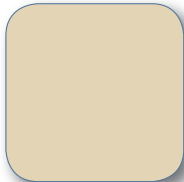
*Wicker



Linen



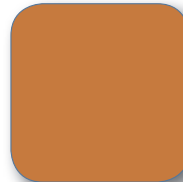
Cameo



Wheat



Terra Bronze



Copper Penny



Bronze



*Harvest Brown



Musket Brown



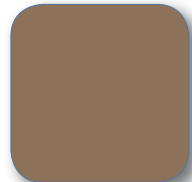
*Royal Brown



*Beaver Brown



Weathered Bronze



Buckskin



*Black



*Evergreen



Spanish Green



Marine Green



*Redwood



Rosewood



*Charcoal Grey



*Harbor Grey



*Victorian Grey



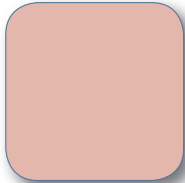
*Tahoe Blue



*Country Blue



Sea Blue



Peach



Desert Mauve

*These colors are available in steel.

Note: Actual colors may vary from finished product.

Paint finish provided by

valspar

if it matters, we're on it.®