

STANDARD MAINTENANCE AND TROUBLESHOOTING

REPLACING THE MIXING CARTRIDGE

1. Shut off the water supply to the faucet.
2. Turn on the faucet briefly to relieve any pressure inside the faucet.
3. Remove cap C from the lever handle A and remove the screw B using allen key.
4. Remove the handle A from the faucet body.
5. Unscrew the cap D.
6. Unscrew the cartridge lock nut E.
7. Lift ceramic disk cartridge F from the body and replace it with new cartridge. Ensure the two lugs on bottom of the cartridge sit properly in the allocated holes at the base of the body.
8. Reassemble faucet in reverse order and test for leakage.

REPLACING THE FILTERED WATER VALVE

1. Shut off the water supply to the faucet.
2. Turn on the faucet briefly to relieve any pressure inside the faucet.
3. Remove cap C from the handle H and remove the screw B1 using an allen key.
4. Remove handle H from the faucet body.
5. Use 20 mm socket to unscrew valve from faucet body and replace with new valve, tighten new valve, **DO NOT exceed 177 in-lbs of torque.**
6. Reassemble faucet in reverse order and test for leakage.

GENERAL MAINTENANCE

See Installation section for hose replacement diagram.

Clean aerator periodically for any buildup.

Do not use harsh detergents, solvents, chemical agents, metallic sponges, etc. that could harm the surface and damage the finish.

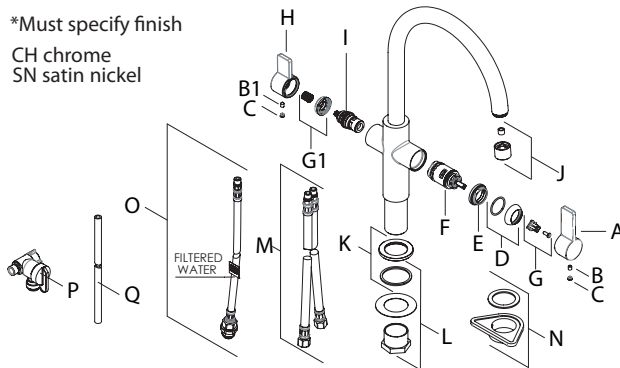
Clean only with a soft sponge and soapy water.

SPARE / REPLACEMENT LIST

| | | |
|-----------|--------------------------------|---------|
| A+B+C+G | Mixer Handle assembly | F3101* |
| H+B1+C+G1 | Filtered water handle assembly | FT3101* |
| D. | Cap | F2902* |
| E. | Lock nut | F2903 |
| F. | Cartridge | F2904 |
| I. | Filtered water valve | FT3102 |
| J. | Aerator assembly | FT3103* |
| K+L+N | Mounting hardware kit | F3110 |
| M. | Supply hoses | FT3104 |
| O. | Filtered water supply hose | FT3105 |
| P. | Shut off valve | 10306 |
| Q. | 3/8" Poly Tubing | 10305 |

*Must specify finish

CH chrome
SN satin nickel



LIMITED LIFETIME WARRANTY

Franke Kitchen Systems, LLC extends the following warranty to the original purchaser of its faucets effective January 1, 2003.

All faucets installed in a private residence will carry a limited lifetime warranty on all mechanical parts to be free of manufacturing defects in material and workmanship under normal usage. All chrome finishes carry a limited lifetime warranty; all other finishes are warranted for five (5) years from the original date of purchase.

Marine and Outdoor Installation: Franke faucets are NOT warranted for Marine and Outdoor installations.

This warranty applies only to the original owner, providing the product has been installed in accordance with our installation instructions, used as recommended and in a normal residential application. In the event of a warranty claim, the owner will be required to provide proof of purchase - save sales receipt. This warranty covers all components which make the product operational. Franke, at its option, may repair or replace the product or components necessary to restore the product to good working condition. Franke reserves the right to inspect the installation prior to the actual replacement of the product or component part. This warranty does not cover misuse or abuse, accidental damages, scuffs or scratches, improper installation, abnormal usage, negligence or damage caused by improper maintenance or cleaning. Normal wear of parts is excluded from the warranty. Damage caused by impurities or acts beyond our control are not covered. Any product or part which has been repaired or altered in any manner outside of Franke's factory, unless previously authorized in writing by Franke, will void warranty. **Any replacement excludes transportation and any labor re-installation costs.** This warranty does not allow recovery of incidental or consequential damages such as loss of use, delay, property damage or other consequential damage, and Franke accepts no liability for such damages.

The Franke warranty is limited to the above conditions and to the warranty period specified herein and is exclusive. Franke DISCLAIMS all other warranties, expressed or implied, including IMPLIED WARRANTIES OF MERCHANTABILITY AND/OR FITNESS FOR A PARTICULAR PURPOSE. This warranty gives you specific legal rights that may vary from state to state.

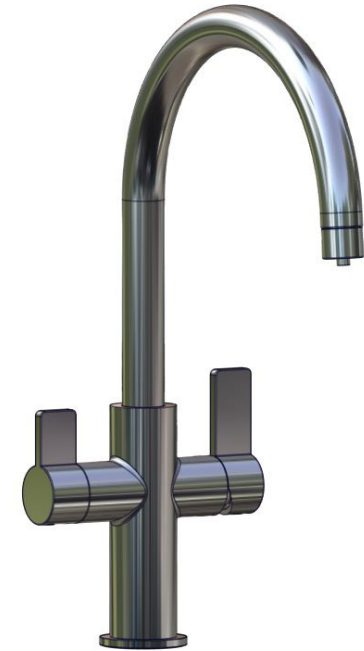
Further information

For any further information about our products, about the installation of them or about the guarantee, please contact our customer service department:

Franke Kitchen Systems
800 Aviation Parkway
Smyrna, TN 37167, USA
Phone: 800-626-5771
Email: ks-customerservice.us@franke.com

INSTALLATION MANUAL

AMBIENT FILTER 3-1 FFT3100 - FFT3180



MAKE IT WONDERFUL




LISTRE196824/3VF C08960

REV.1.07/2016

TECHNICAL DATA

| | |
|-----------------------------|--------------------|
| Flow Rate filtered water | 0.52 GPM at 45 PSI |
| Flow Rate mixed water | 1.75 GPM at 45 PSI |
| Recommended Water Pressure | 30-75 PSI |
| Max. Water Pressure | 145 PSI |
| Recommended Hot Water Temp. | 120°-140° F |
| Hole Size For Faucet | 1 3/8" |

 Certifies this faucet complies with ASME A112.18.1 / CSA B125.1 & NSF 61, NSF 372 and AB1953

NOTE:

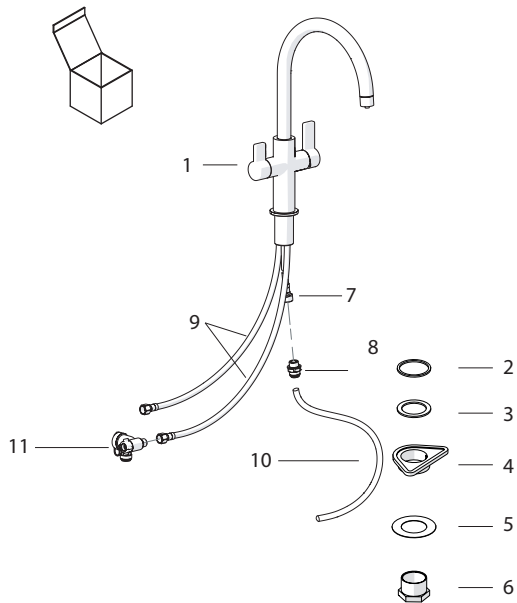
Contact us immediately if you see inconsistencies.

Phone: (1- 800-626-5771)

website: www.frankeksd.com

email: ks-customerservice.us@franke.com

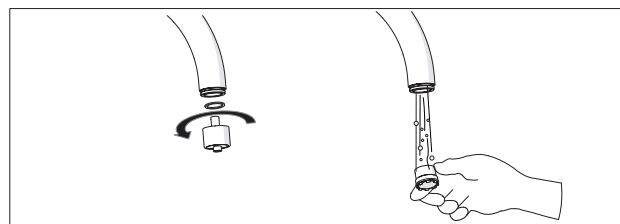
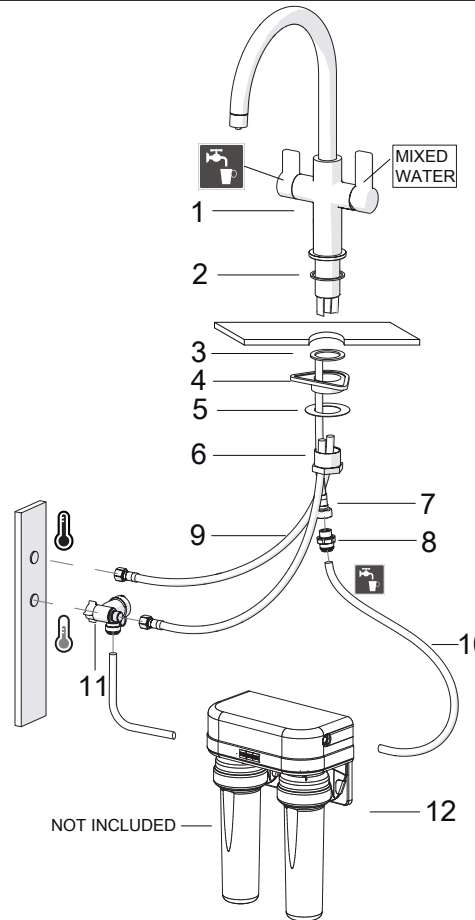
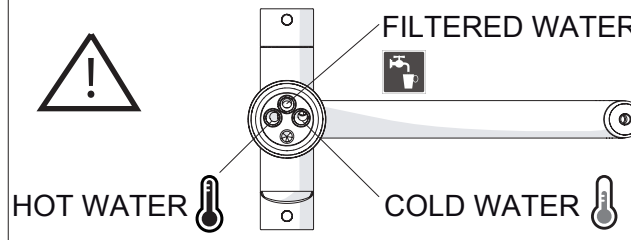
CONTENTS IN BOX



- | | |
|-------------------|---------------------------------|
| 1 Faucet assembly | 7 Filtered water supply hose |
| 2 Rubber washer | 8 Filtered water supply fitting |
| 3 Rubber washer | 9 Supply hoses |
| 4 Plastic flange | 10 3/8" Poly Tubing |
| 5 Fixing plate | 11 Shut off valve |
| 6 Fixing nut | |

IMPORTANT: Franke strongly recommends using only genuine Franke water filtration products with this faucet. The **installation** or function of the faucet can't be guaranteed if using other filtration products.

HOSE REPLACEMENT DIAGRAM-BOTTOM VIEW OF FAUCET



INSTALLATION INSTRUCTIONS

1. Remove all contents from the package and check for completeness. Franke recommends this product be installed by a licensed, professional plumber. Be sure to observe all applicable plumbing and building codes during the installation.

2. Turn off water supply.

3. Cut a mounting hole 1 3/8 diameter (35mm) in the desired position in counter top or sink (if one isn't available).

4. Place the rubber washer (2) over the base of the faucet body.

ATTENTION: The washer should be sitting between the countertop and faucet base. **DO NOT** use putty or other sealant at this location.

5. Install the mounting hardware to the base of the faucet body in the following order - rubber washer (3); plastic flange (4) fixing plate (5) as illustrated

6. Secure the faucet by tightening the fixing nut (6) to the faucet body.

7. Connect the 3/8 poly tubing (10) to the Filtered water supply fitting (8) and cut tubing to proper length to remove any unnecessary loops or low spots. Save excess tubing for water filtration connection.

IMPORTANT: DO NOT use tools of any kind to tighten the filtered water supply fitting (8). It is pre-installed and shouldn't need additional tightening, but if additional tightening is necessary, it should ONLY be tightened by hand.

IMPORTANT: When using push fittings, ensure the ends of the tubing are cut square and free of burrs or damage within 1" of the end of the tube. DO NOT use any forms of sealing compounds, or tools to remove the tubing or modify the fitting in any way, as this can damage fitting and result in leaks. Proper installation and removal of tubing in push fittings is outlined below. Damage in this area can cause leaks.

HOW TO INSERT/REMOVE TUBING IN PUSH FIT CONNECTIONS

Insert the tubing squarely. See Figure A.
Make sure to insert tubing completely. See Figure B.
To remove, push in collet and pull out tubing See Figure C.

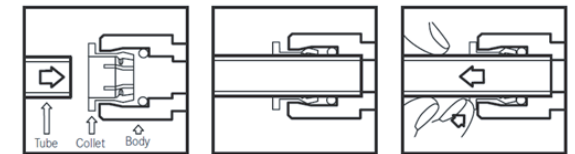


Figure A

Figure B

Figure C

8. Connect the 3/8 poly tubing (10) to the exit of the water filter (12).

9. Connect the hot water supply hose (9) to the hot water supply in the house as illustrated.

10. Connect the shut-off valve (11) to the cold water supply in the house and connect the other side to the cold water supply hose (9) as illustrated.

IMPORTANT: DO NOT over-tighten threaded connections for the shut-off valve (11). **DO NOT exceed 25 in-lbs of torque.**

11. Take excess 3/8" poly tubing (10) from step 7 and connect one end to the push fitting connection of the shut-off valve (11) as illustrated. Take the other end and connect it to the inlet of the water filter (12).

12. Remove the aerator by hand, open shut-off valve (11) and turn on the faucet (filtered water and then mixed water).

Flush the faucet for any debris and check for leaks.

Reinstall aerator and ensure everything is functioning properly.