

STANDARD MAINTENANCE AND TROUBLESHOOTING

Replacing Mixing Cartridge

1. Shut off the water supply to the faucet
2. Turn on the faucet briefly to relieve any pressure inside the faucet
3. Remove set screw from handle C using allen key
4. Remove handle C from faucet body
5. Unscrew the cap D
6. Unscrew the cartridge lock nut E
7. Lift ceramic disk cartridge F from the body and replace it with new cartridge. Ensure the two lugs on bottom of the cartridge sit properly in the allocated holes at the base of the body
8. Reassemble faucet in reverse order and test for leakage

Replacing The Filtered Water Valve

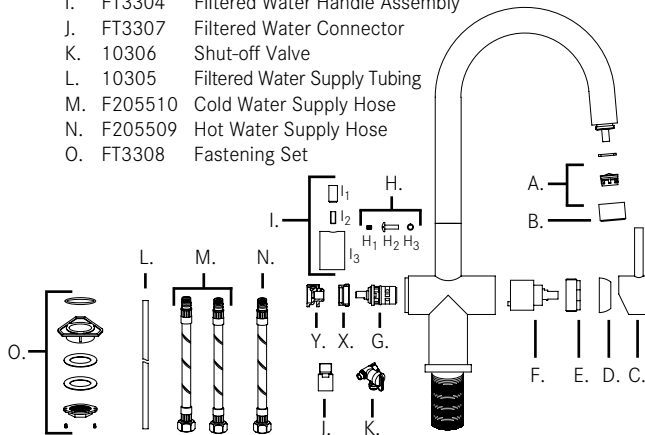
1. Follow steps 1 and 2 on replacing mixing cartridge section
2. Unscrew the handle tip I₁ from the handle thread I₂ and remove it from the handle body I₃
3. Unscrew handle thread I₂ from handle body I₃ using allen key
4. Slide handle body I₃ off of the faucet body
5. Remove phillips screw H₂ and allen screw H₁ from handle mounting sleeve Y and slide mounting sleeve Y off the valve stem
6. Unscrew the valve cap X using 22mm wrench
7. Remove filtered water valve G from faucet body and replace with new valve. Ensure two tabs on the valve align with the slots in the faucet body
8. Reassemble faucet in reverse order and test for leakage

General Maintenance

- Clean aerator periodically for any buildup
- Do not use harsh detergents, solvents, chemical agents, especially any containing CHLORINE, or metallic sponges as these can damage the surface finish
- Clean only with soft sponge and soapy water

Spare/Replacement List

- | | | |
|----|---------|--------------------------------|
| A. | FT3301 | Aerator with Washer |
| B. | FT3302 | Aerator Sleeve |
| C. | FT3303 | Mixer Handle Assembly |
| D. | F205506 | Cartridge Cap |
| E. | F3412 | Cartridge Nut |
| F. | F206502 | Cartridge |
| G. | FT3306 | Filtered Water Valve |
| H. | FT3305 | Handle Fastening Hardware |
| I. | FT3304 | Filtered Water Handle Assembly |
| J. | FT3307 | Filtered Water Connector |
| K. | 10306 | Shut-off Valve |
| L. | 10305 | Filtered Water Supply Tubing |
| M. | F205510 | Cold Water Supply Hose |
| N. | F205509 | Hot Water Supply Hose |
| O. | FT3308 | Fastening Set |



LIMITED LIFETIME WARRANTY

Franke Kitchen Systems, LLC (Franke) extends the following warranty to the original purchaser of its faucets effective January 1, 2003.

All faucets installed in a private residence will carry a limited lifetime warranty on all mechanical parts to be free of manufacturing defects in material and workmanship under normal usage. All chrome finishes carry a limited lifetime warranty; all other finishes are warranted for five (5) years from the original date of purchase.

Marine and Outdoor Installation: Franke faucets are NOT warranted for Marine and Outdoor installations.

This warranty applies only to the original owner, providing the product has been installed in accordance with our installation instructions, used as recommended and in a normal residential application. In the event of a warranty claim, the owner will be required to provide proof of purchase. Please save sales receipt. This warranty covers all components which make the product operational. Franke, at its option, may repair or replace the product or components necessary to restore the product to good working condition. Franke reserves the right to inspect the installation prior to the actual replacement of the product or component part. This warranty does not cover misuse or abuse, accidental damages, scuffs or scratches, improper installation, abnormal usage, negligence or damage caused by improper maintenance or cleaning. Normal wear of parts is excluded from the warranty. Damage caused by impurities or acts beyond our control are not covered. Any product or part which has been repaired or altered in any manner outside of Franke's factory, unless previously authorized in writing by Franke, will void warranty. **Any replacement excludes transportation and any labor re-installation costs.** This warranty does not allow recovery of incidental or consequential damages such as loss of use, delay, property damage or other consequential damage, and Franke accepts no liability for such damages.

The Franke warranty is limited to the above conditions and to the warranty period specified herein and is exclusive. Franke DISCLAIMS all other warranties, expressed or implied, including IMPLIED WARRANTIES OF MERCHANTABILITY AND/OR FITNESS FOR A PARTICULAR PURPOSE. This warranty gives you specific legal rights that may vary from state to state.

Further information

For any further information about our products, about the installation of them or about the guarantee, please contact the customer service department at:

Franke Kitchen Systems, LLC
Kitchen Systems Division
800 Aviation Parkway
Smyrna, TN 37167
Phone: 1-800-626-5771
Fax: 1-888-685-0007
www.franke.us/ks.com

Inventory #?

07/2016

INSTALLATION MANUAL

EOS

FFT3350 Faucet



MAKE IT WONDERFUL



TECHNICAL DATA

- Flow rate filtered water 0.52 GPM at 60 PSI
- Flow Rate mixed water 1.75 GPM at 60 PSI
- Recommended water pressure – 30-75 psi
- Max water pressure – 145 psi
- Recommended hot water temperature – 120 - 140 F
- Hole size for faucet – 1 3/8"



Certifies this faucet complies with ASME A112.18.1 / CS B125.1 & NSF 61, NSF 372 and AB1953

Note

Contact us immediately if you see inconsistencies:

- Phone – 1-800-626-5771
- Email – ks-customerservice.us@franke.com
- Website – www.franke.us/ks.com



Contents in Box

- A. Faucet assembly
- B. Escutcheon o-ring
- C. Plastic flange
- D. Rubber washer
- E. Steel washer
- F. Fixing nut
- G. Hot water supply hose
- H. Filtered water supply hose with connector
- I. Cold water supply hose
- J. Filtered water supply tubing
- K. Shut-off valve

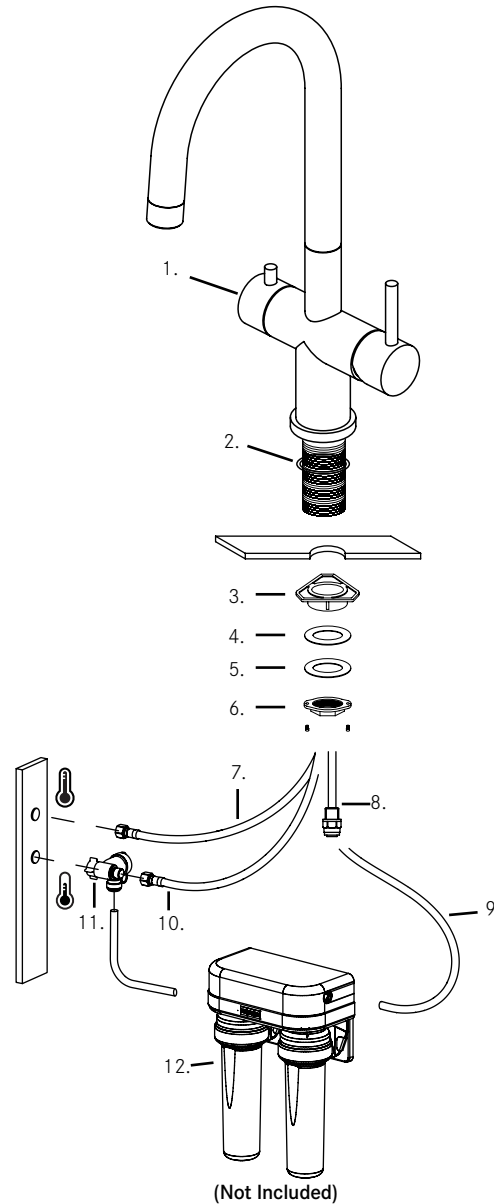
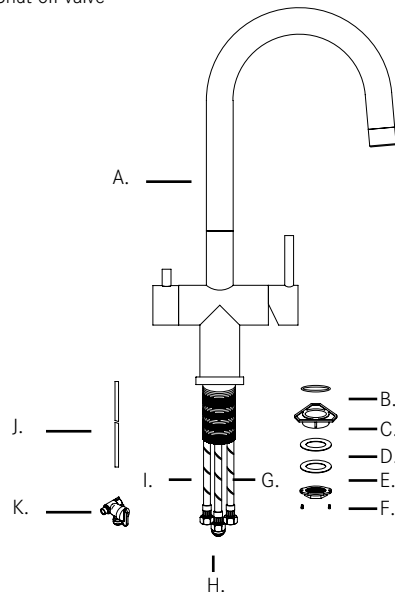
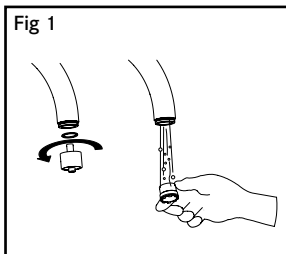


Fig 1



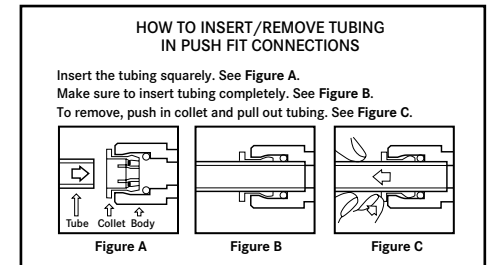
INSTALLATION INSTRUCTIONS

1. Remove all contents from the package and check for completeness. Franke recommends this product be installed by a licensed, professional plumber. Be sure to observe all applicable plumbing and building codes during the installation.
2. Turn off water supply.
3. Cut mounting hole 1 3/8" in diameter (35mm) in the desired position (if one isn't available).
4. Make sure the rubber escutcheon o-ring (2) is in place in the escutcheon. **DO NOT use putty or other sealant at this location.**
5. Install the mounting hardware to the base of the faucet body in the following order: Plastic flange (3), rubber washer (4), steel washer (5), fixing nut (6).
6. Secure the faucet by tightening the fixing nut (6) to the faucet body by tightening the two phillips fixing screws.

7. Connect the filtered water supply tubing (9) to the filtered water connector (8) and cut tubing to proper length to remove any unnecessary loops or low spots. Save excess tubing for water filtration connection.

IMPORTANT: Do NOT modify the filtered water connector in any way, this could lead to leaks. It is pre-installed and shouldn't need additional tightening, but if additional tightening is necessary, it should ONLY be tightened by hand.

IMPORTANT: When using push fittings, ensure the ends of the tubing are cut square and free of burrs or damage within 1" of the end of the tube. DO NOT use any forms of sealing compounds, or tools to remove the tubing or modify the fitting in any way, as this can damage fitting and result in leaks. Proper installation and removal of tubing in push fittings is outlined below. Damage in this area can cause leaks.



8. Connect the filtered water supply tubing (9) to the exit of the water filter (12) (sold separately).
9. Connect the hot water supply hose (7) to the hot water supply in the house as illustrated.
10. Connect the shut-off valve (11) to the cold water supply in the house and connect the other side to the cold water supply hose (10) as illustrated. **IMPORTANT: DO NOT over-tighten threaded connections for the shut-off valve (11). DO NOT exceed 25 in-lbs of torque.**
11. Take excess supply tubing (9) from step 7 and connect one end to the push fitting connection of the shut-off valve (11) as illustrated. Take the other end and connect it to the inlet of the water filter (12).
12. Remove the aerator by hand, open shut-off valve (11) and turn on the faucet (filtered water and then mixed water). Flush the faucet for any debris and check for leaks. Reinstall aerator and ensure everything is functioning properly (See fig 1).