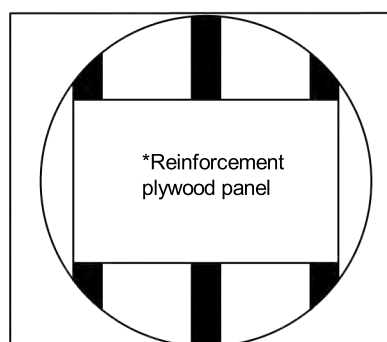


# 1513-WV 3021

## Step 1

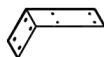






Cut opening in wall



Reinforcement plywood panel  
 larg enough to cover 2 studs  
 \*not provided by manufacturer

Wall

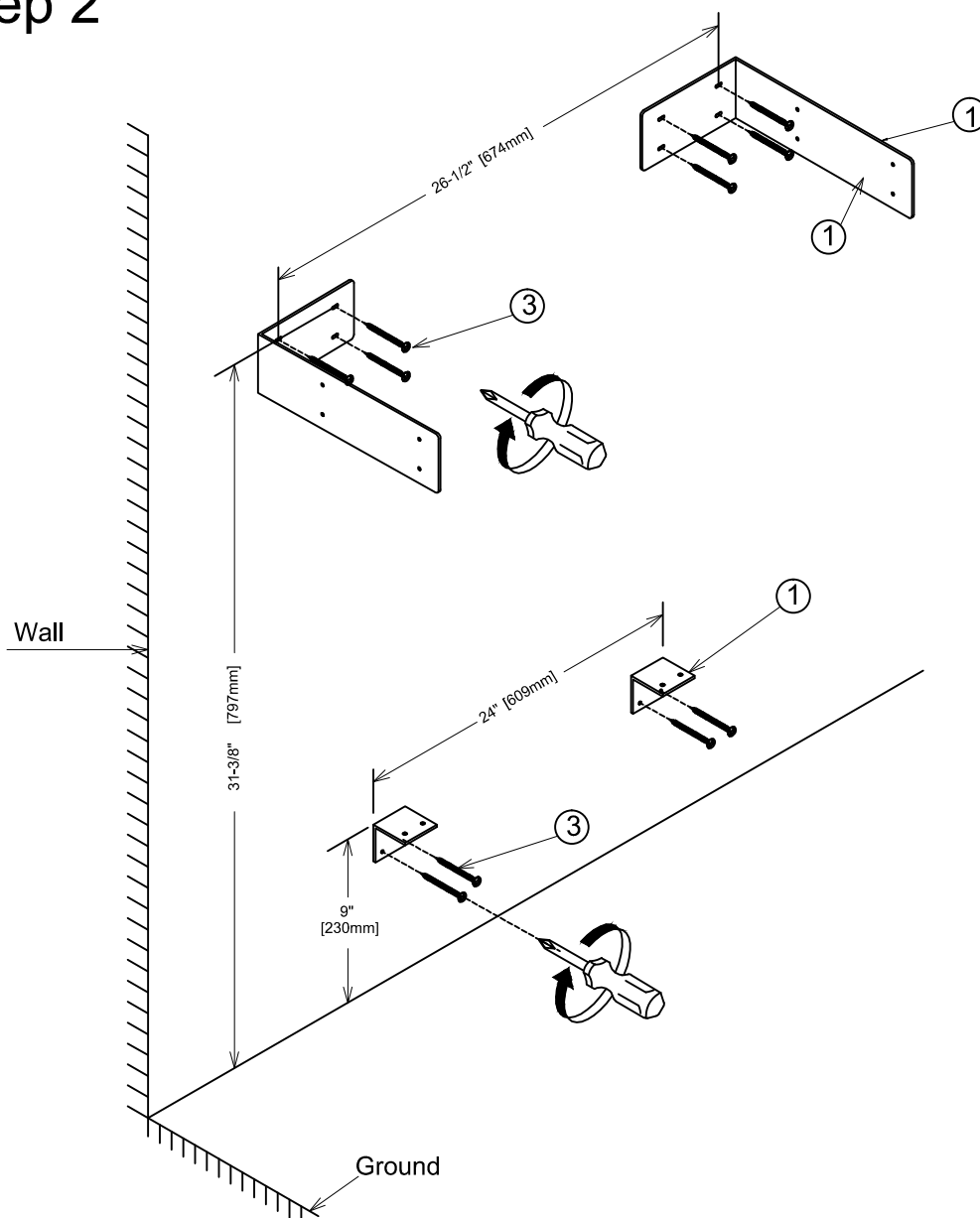
Ground

PARTS INCLUDED				TOOLS AND MATERIALS		
1		280*150*80*3MM	2 PCS	 Screwdriver  Tape measure  Pencil		
2		50*50*50*3MM	2 PCS			
3		Φ8 X 38mm	12 PCS			
4		Φ3.5*15MM	10 PCS			

**Fairmont Designs highly recommends that you seek a professional installation specialist if you are unsure of installation. Please note: Fairmont Designs is not responsible for any installation error, damages or injuries, actual or consequential resulting from possible printing error in instruction**

1513-WV 3021

## Step 2

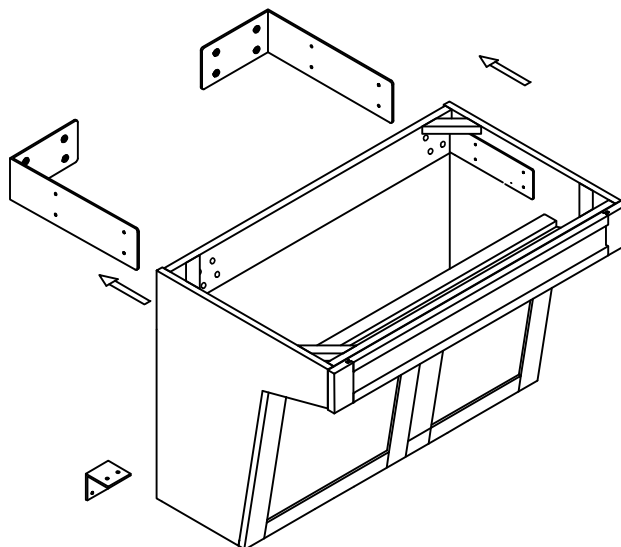


mounting bracket must  
be attached to  
reinforcement panel

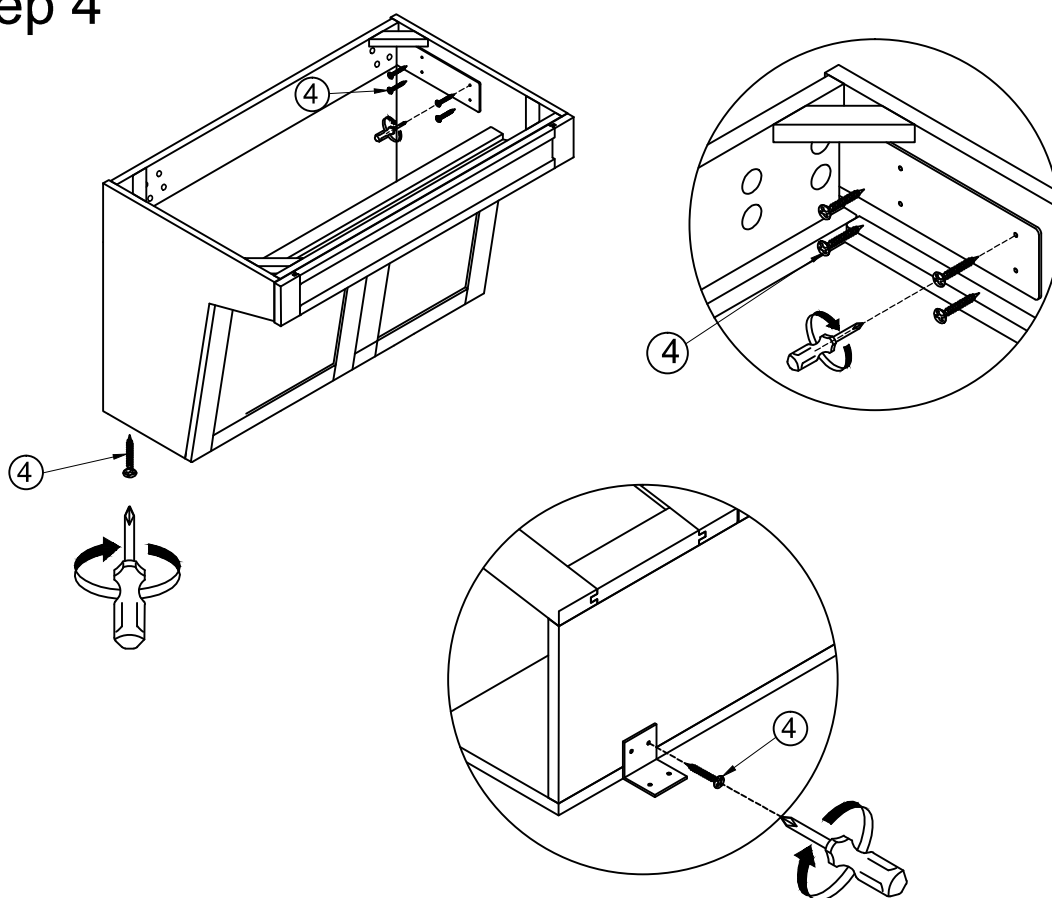
Fairmont Designs highly recommends that you seek a professional installation specialist if you are unsure of installation. Please note: Fairmont Designs is not responsible for any installation error, damages or injuries, actual or consequential resulting from possible printing error in instruction

1513-WV 3021

Step 3



Step 4



Fairmont Designs highly recommends that you seek a professional installation specialist if you are unsure of installation. Please note: Fairmont Designs is not responsible for any installation error, damages or injuries, actual or consequential resulting from possible printing error in instruction