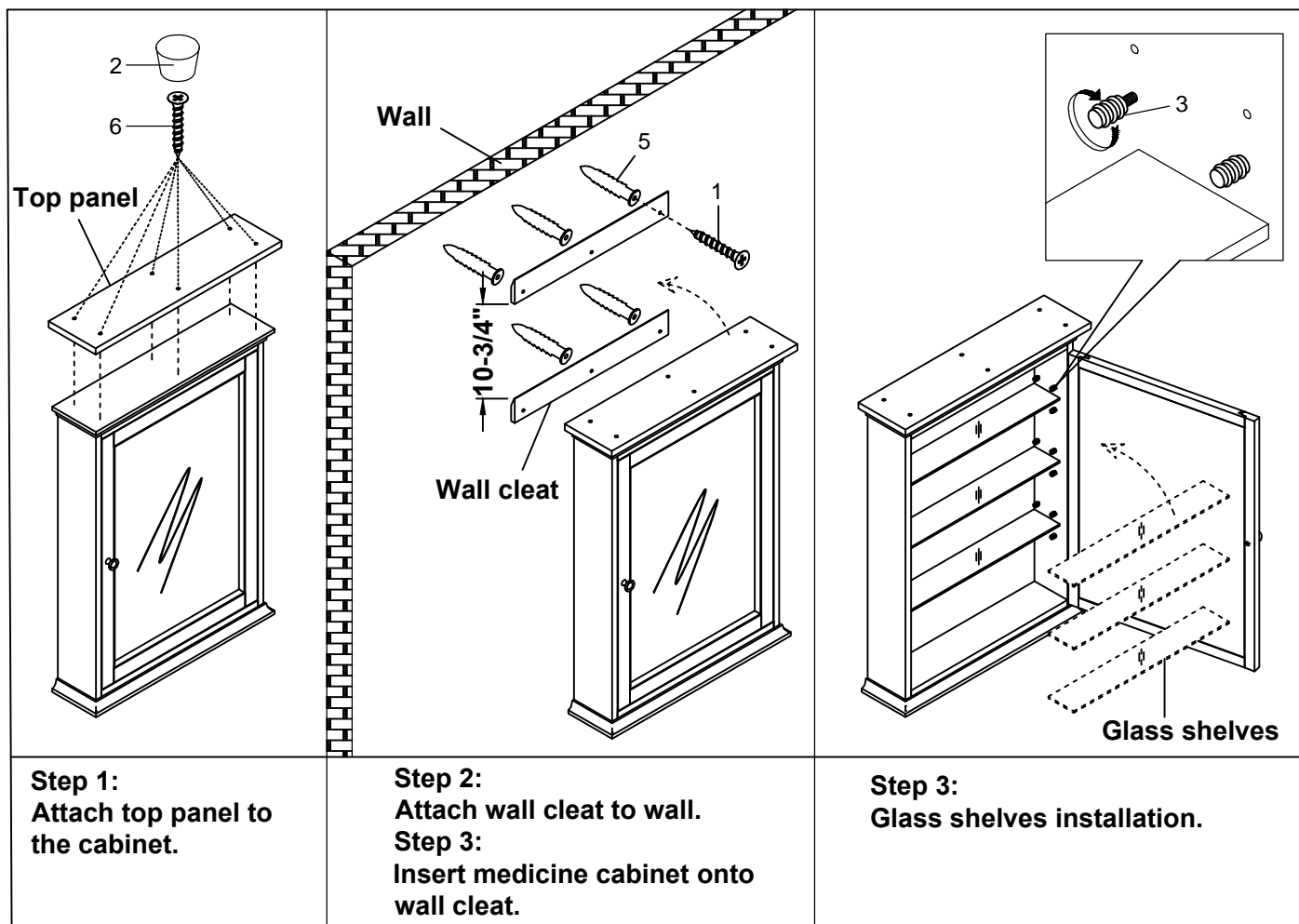
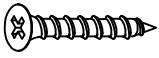
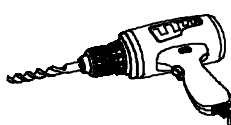
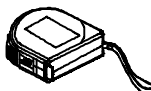

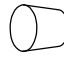
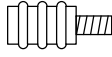
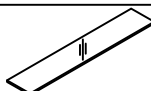
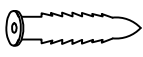
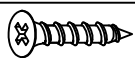


Before Installing Top Panel to the Cabinet, the Cabinet can mounted as hinge Right or Hinge Left.



PART INCLUDED				TOOLS AND MATERIALS		
1		Ø8x1-1/2"L	6	 Electric Drill	 Tape Measure	 Pencil
2		Φ10.5x8mm	6			
3		Φ9x22mm	12			
4		Glass Shelf	3			
5		Plastic fastening	6			
6		Ø8x1"L	6			

Fairmont Designs highly recommends that you seek a professional installation specialist if you are unsure of installation. Please note: Fairmont Designs is not responsible for any installation error, damages or injuries, actual or consequential resulting from possible printing error in instruction.