

# EDGE STAR<sup>®</sup>

## Refrigerator / Freezer



# CRF321SS

## Owner's Manual

## Important Safety Information

Improper handling can cause serious damage to the EdgeStar refrigerator and / or injury to the user. This refrigerator is designed for domestic indoor use only. **Do not use the unit for industrial or commercial use.** Any other use may invalidate the warranty. Please review the ratings label located on the rear panel of the unit for electrical and other technical data related to this unit. The unit must be used in a properly grounded wall outlet.

**Please read and follow the safety information listed below to reduce the risk of fire, electric shock, or injury.**



### Electrical Safety

- Do not exceed the power outlet ratings.
- It is recommended the refrigerator be connected on its own circuit.
- The unit must be installed in accordance with state and local electrical codes.
- A standard electrical supply (115 V, 60Hz), that is properly grounded in accordance with the National Electrical Code and local codes and ordinances is required.
- Use outlets that cannot be turned off by a switch or pull chain.
- Always turn the unit off and unplug it from the outlet when cleaning.
- Unplug the unit if it is not going to be used for an extended period of time.
- Do not operate the unit with a power plug missing the ground plug, a damaged cord, or a loose socket.
- Be sure the refrigerator is properly grounded.
- Never plug or unplug the unit with wet hands.
- Do not bypass, cut, or remove the grounding plug.
- Do not use extension cords or power strips with this unit. You may need to contact your electrician if it is necessary to use a longer cord or if you do not have a grounded outlet. Do not modify the power cord's length or share the outlet with other appliances.
- Do not start or stop the unit by switching the circuit's power on and off.
- If the power cord is damaged, it must be replaced by the manufacturer or a qualified technician.
- Never repair the unit while it is plugged in.
- Immediately unplug the unit if it makes strange sounds, emits smells, or smoke comes out of it, and contact customer service.
- Do not remove any part of the casing unless you are instructed to do so by an authorized technician.
- You should never attempt to repair the unit yourself.
- Contact customer service for service options if the unit needs service.

# Important Safety Information



## General Safety

- To prevent injuries, use at least two people to move and install the refrigerator.
- This appliance is not intended for use by persons, including children, with reduced physical, sensory or mental capabilities, unless they have been given supervision or instruction concerning the use of the appliance by the person(s) responsible for their safety.
- Install the refrigerator in a well-ventilated area where the ambient temperature is above 50° F and below 90° F.
- Do not place hot or warm items into the refrigerator before they cool down to room temperature.
- This unit is designed to be installed indoors, and protected from rain, sleet, snow, and / or moisture.
- This unit is not intended to be used by children.
- Children should be supervised to ensure that they do not play with this product.
- Never allow children to crawl inside the refrigerator. If you are disposing of the unit, remove the door.
- Do not use this appliance near flammable gas or combustibles such as gasoline, benzene, or thinner.
- Do not store explosive substances such as aerosol cans with a flammable propellant in this appliance.
- Do not place the unit near heat sources such as ovens, grills, or direct sunlight.
- Only use in an upright position on a flat, level surface and provide proper ventilation.
- Do not pinch or kink the power supply line between the unit and cabinet.
- Do not leave any cleaning solutions in the unit.
- Do not use solvent-based cleaning agents or abrasive solutions to clean the unit as they may damage the interior and exterior.
- Do not place any other appliances on top of the unit.
- Do not turn the unit upside down, on its side, or at an angle off level.
- If your model of refrigerator is equipped with a lock, keep the keys away from children.
- Do not move the unit without emptying the contents and securing the door in a closed position.
- This appliance is not intended for use by persons (including children) with reduced physical, sensory, or mental capabilities unless they are given supervision or instruction by a person responsible for their safety.
- This appliance is meant for use in the household or similar settings.
- Keep all ventilation openings clear of obstruction.
- Do not use mechanical devices or other means to accelerate the t process.
- Do not damage the refrigerant circuit.
- Do not use other appliances inside the refrigerator unless recommended by the manufacturer.
- If the supply cord is damaged, it must be replaced by the manufacturer, its service agent, or a similarly qualified individual.



**DANGER:** Risk of child entrapment. Before you throw away your old refrigerator or freezer, take off the doors and leave the shelves in place so that children may not easily climb inside.

# Table of Contents

Important Safety Information .....	2
First-Time Operating Instructions .....	5
Introduction.....	5
Parts Identification .....	6
Installation .....	7
Unpacking the Refrigerator .....	7
Clearance Requirements.....	7
Electrical Requirements .....	8
Recommended Grounding Method .....	8
Leveling the Refrigerator .....	8
Reversing the Door Swing.....	9
Cleaning Prior to Use .....	9
Operation.....	10
Installation Checklist before Operation.....	10
Temperature Control.....	10
Food Storage.....	10
Freezing Fresh Food.....	10
Interior Light .....	11
Normal Sounds.....	12
Defrosting .....	12
Energy Saving Guide .....	12
Preparing the Refrigerator for Storage.....	13
Cleaning and Maintenance.....	13
Troubleshooting.....	14
Specifications .....	16
EdgeStar Limited Warranty .....	17

# First-Time Operating Instructions

Before use, make sure all packaging labels and materials are removed from the unit. Be sure to keep track of all included parts and pieces before discarding the packaging materials. It is advised that you keep the original box and packaging materials in case you ever need to move or ship the appliance in the future.

Let the unit stand for at least 24 hours before you use it; this allows the cooling components time to settle from transit. The instruction manual should be read before use.

## Introduction

Thank you for purchasing this EdgeStar refrigerator. We hope that this purchase will be the beginning of a lasting and rewarding relationship between you and EdgeStar. We will provide the customer support and exemplary products necessary to nurture that relationship.

This manual contains important information regarding the proper installation, use, and maintenance of your refrigerator. Following this manual will ensure that your product will work at its peak performance and efficiency.

Please save the original product packaging in case you need to safely transport your refrigerator.

For Your Records:

Please write down the model number and serial number below for future reference. Both numbers are located on the ratings label on the back of your unit and are needed to obtain warranty service. You may also want to staple your receipt to this manual as it is the proof of your purchase, and is also needed for service under your warranty.

Model Number: \_\_\_\_\_

Serial Number: \_\_\_\_\_

Date of Purchase: \_\_\_\_\_

For a more efficient experience, please do the following before contacting customer service:

If you received a damaged product, immediately contact the retailer or dealer who sold the product.

Read and follow this instruction manual carefully to help you install, use, and maintain your refrigerator.

Read the troubleshooting section of this manual. It will help you diagnose and solve common issues.

Visit us on the web at [www.edgestar.com](http://www.edgestar.com) to register your product, download product guides, and access additional troubleshooting resources and up-to-date information.

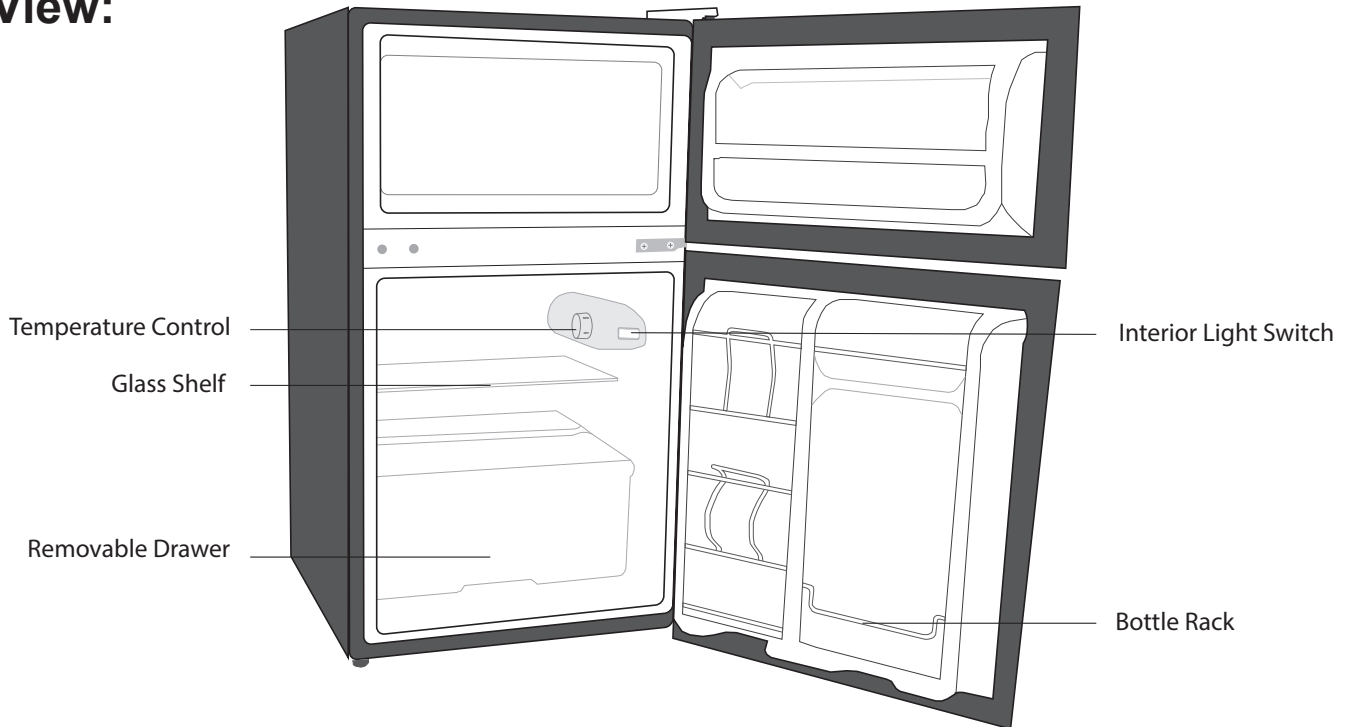
For warranty service, customer service representatives are available at [service@edgestar.com](mailto:service@edgestar.com).

## Parts Identification

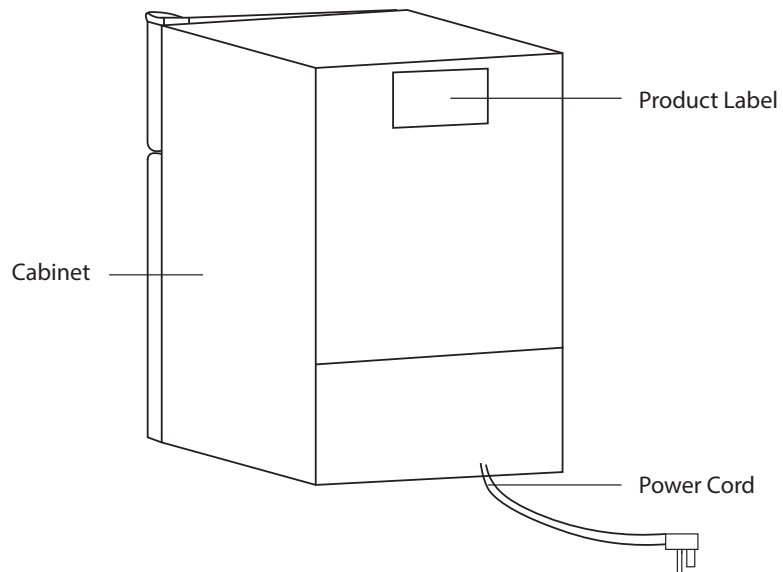


**Note:** Gather the model and serial number from the product label and write them down before installing the refrigerator.

### Front View:



### Rear View:



**Note:** A plastic ice scraper is included with every unit to remove frost from the freezer zone.

# Installation

The refrigerator should be installed in accordance with local electrical code requirements. The refrigerator should also be placed in a location that is strong enough to support its total weight, keeping in mind that it will weigh substantially more when fully loaded than when empty. **Before you plug the refrigerator into a power supply, be sure to let it stand upright for at least 24 hours to allow the compressor's oils to settle.**

## Unpacking the Refrigerator



**Warning:** Use two or more people to move and install the refrigerator. Failure to do so can result in back or other injury. Carefully remove the packaging materials. Remove any shipping tape and glue from your refrigerator before use. Do not use sharp instruments, rubbing alcohol, flammable fluids, or abrasive cleaners to remove tape or glue. These products can damage the surface of your refrigerator.



**Warning:** Do not remove any safety, warning, or product information labels from your refrigerator.

This refrigerator has been designed for freestanding installation. This will allow you to install the refrigerator in almost any place you desire. You must follow the stated instructions for electrical requirements and leveling the refrigerator.

## Clearance Requirements

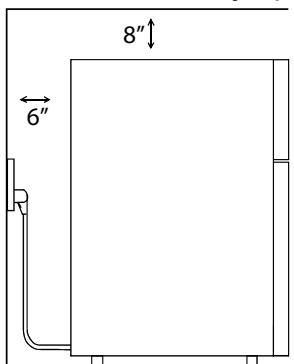


**Notes:**

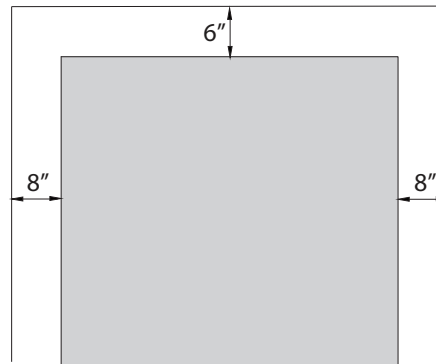
- This unit **MUST** be installed in an area protected from the elements, e.g. wind, rain, water spray, or drips.
- The refrigerator should not be located next to ovens, grills, or other heat sources.
- Do not kink or pinch the power supply cord between the refrigerator and the wall or cabinet.

Leave 8" of space on either side of the refrigerator, 6" at the rear, and 8" above the unit. This will allow cold air to circulate around the refrigerator and improve the efficiency of the cooling process. The door can be opened to the right or the left, depending on what best suits the location. Please ensure there is adequate space for the door to fully open.

**Side View:**



**Top View:**





**Warning:** DO NOT install the refrigerator behind a closed cabinet door.



**Note:** The refrigerator should be installed on a firm and level surface that will be able to support the entire weight of a fully loaded unit. It is important for the refrigerator to be level in order to work properly. If needed, you can adjust the height of the refrigerator by rotating the feet. See the “Leveling the refrigerator” section.

## Electrical Requirements

A standard electrical supply (115 VAC only, 60 Hz) properly grounded in accordance with National Electrical Code and local codes and ordinances is required. The fuse (or circuit breaker) size should be 15 Amps.

### ELECTRIC SHOCK HAZARD!



- Plug into a grounded 3-prong outlet.
- Never remove the grounding prong from the plug.
- Never use an adapter to bypass the grounding prong.
- DO NOT use an extension cord.
- Failure to follow these instructions can result in fire, electrical shock, or death.

## Recommended Grounding Method

For your personal safety, this appliance must be grounded. It is equipped with a power supply cord that has a 3-pronged grounding plug. To minimize possible shock hazard, the cord must be plugged into a mating 3-pronged wall socket, and grounded in accordance with the National Electrical Code and local codes and ordinances. If a mating wall socket is not available, it is the personal responsibility of the customer to have a properly grounded, 3-prong wall receptacle installed by a qualified electrician.

## Leveling the Refrigerator

It is important for the refrigerator to be level in order to work properly. It can be raised or lowered by rotating the leveling feet at the front of the unit. If you find that the surface is not level, rotate the feet until the refrigerator becomes level. You may need to make several adjustments to level it. We recommend using a carpenter’s level to check the machine.

1. Place a carpenter’s level on top of the product to see if the refrigerator is level from front to back and side to side.
2. Adjust the height of the feet as follows:  
Turn the leveling feet to the right to lower that side of the refrigerator.  
Turn the leveling feet to the left to raise that side of the refrigerator.



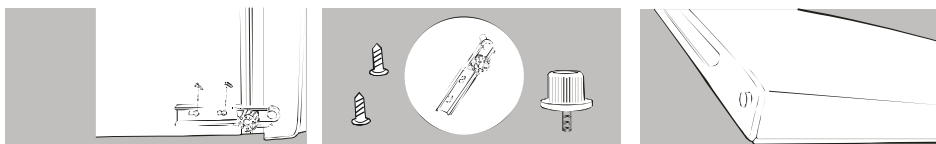
## Reversing the Door Swing



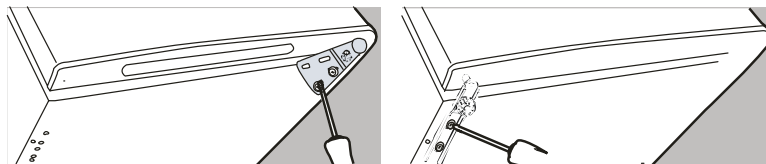
### Notes:

- Before you begin, unplug the refrigerator.
- If it is necessary to tilt the unit backwards, rest the unit on something solid so that it will not slip during the process.
- Do not lay the unit flat as this may damage the coolant system.

1. Unscrew the two screws from the bottom hinge and remove the hinge from the unit. Remove the leveling leg from the opposite side. Set the hinge, leg, and screws aside in a safe location.
2. Slide the lower door down from the hinge pin located on the top of the door. Set the door aside.



3. Remove the plastic top cover by removing the 2 screws in the back, then unscrew the two screws from the top hinge and remove the hinge and upper door from the unit. Set them aside.
4. Remove the 2 screws from the middle hinge between the 2 doors. Take care to keep the plastic washers for the other side of the hinge.
5. Flip the middle hinge over and secure to the opposite side of the unit by inserting the two screws through the hinge bracket. Do not tighten at this step
6. Slide the top door onto the middle hinge.
7. Install the top hinge on the other side of the unit by inserting the two screws through the hinge and into the top of the unit. Do not tighten at this step.
8. Check that the upper door is properly aligned and tighten the screws in the hinges.



9. Slide the bottom door into the middle hinge and screw the bottom hinge into place.
10. Check that the door is aligned horizontally and vertically and that the seals are closed on all sides before securely tightening the bottom hinge screws.

## Cleaning Prior to Use

Although the refrigerator is cleaned at the factory, dust and contaminants can accumulate during transport, and it is important that the refrigerator be thoroughly cleaned prior to its first use.

Wipe the inside of the unit with a wet cloth or sponge soaked in a solution of warm water and baking soda. Remove the shelves and salad bins and wash with warm, soapy water. Clean the exterior of the unit using a damp cloth, but do not use baking soda on the stainless steel.

# Operation

## Installation Checklist before Operation

1. Have all packing materials and tape been removed from the interior and exterior of the refrigerator?
2. Have the installation instructions been followed, including connecting the machine to electricity? And has proper grounding been installed for the refrigerator?
3. Has the machine been leveled?
4. Is the refrigerator in a site where the ambient temperature is between 50°F and 90°F all year round?
5. Is there a clearance of at least 8" on either side, 6" at the rear, and 8" above the refrigerator?
6. Has the refrigerator been thoroughly cleaned prior to use?

## Temperature Control

The temperature in the refrigerator and freezer is controlled by a thermostat control knob located inside the unit. Turn the thermostat control knob clockwise or counterclockwise to regulate the temperature inside both zones. The markings on the control knobs indicate the "MIN, MED, MAX, and OFF" positions. The temperature decreases from high to low, with the MIN position being the warmest and the MAX position being the coldest.

When using the refrigerator for the first time or after defrosting, turn the temperature control to "MAX" for at least two hours before storing food or beverages inside.

## Food Storage

- Cooked meats or fish should always be stored on a shelf above raw meats or fish to avoid bacterial transfer. Keep raw meat or fish in a container large enough to collect juices and cover it properly. Place the container on the lowest shelf.
- Leave space around your food to allow air to circulate inside the unit. Ensure all parts of the unit are kept cool.
- To prevent transfer of flavors and drying out, pack or cover food separately. Fruit and vegetables do not need to be wrapped.
- Always let pre-cooked food cool down before placing it in the unit. This will help to maintain the internal temperature.
- To prevent cold air escaping, try to limit the number of times you open the door, and close it quickly.

## Freezing Fresh Food

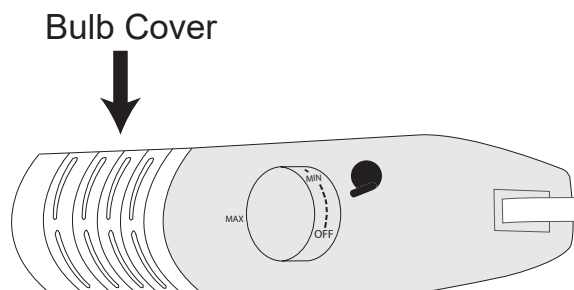
Ensure that your freezing operations are carried out under the most hygienic conditions as freezing alone does not sterilize the food. It is advisable to freeze large amounts of food by packing it into separate meal portions and not in bulk form. Never put hot or even warm food into the unit. Prior to storing frozen food, pack it in plastic bags, aluminum sheets, or freezing containers and then put it in the freezer. Never fill the freezer completely, as frost will accumulate on your food.

## Interior Light

The refrigerator is equipped with a small incandescent bulb to illuminate the interior. The light switch will be automatically triggered when the door opens. If it does not come on when you open the door, the light bulb may need to be changed.

Follow the steps bellow to replace the interior light bulb:

1. Remove any tape from the plastic bulb cover. You may need to remove food items or shelves to access it.



- 2) Reach inside the bulb cover and press down on the bottom to release the tabs holding it in place.
- 3) Unscrew the old light bulb and remove it.
- 4) Replace with a standard 7 or 10 Watt night light bulb.
- 5) Replace the bulb cover by snapping the tabs into place.



**Caution:** If you turned the unit off, please wait at least 5 minutes before turning it back on.

## Normal Sounds

Your refrigerator may make noise during operation. Most of these sounds are normal. Hard surfaces like the floor and walls can make sounds seem louder than they actually are.

**The following describes several sounds you may hear and what may be making them:**

- Rattling noises may come from the flow of the refrigerant or the water line. Items stored on top of the refrigerator can also make noises.
- The high efficiency compressor may make a pulsating or high-pitched sound.
- Water running from the evaporator to the water bin may make a splashing sound.
- As each cycle ends, you may hear a gurgling sound due to the refrigerant flowing in your refrigerator.
- You may hear air being forced over the condenser by the condenser fan.

## Defrosting

Excess frost may build up inside the unit during normal operation. To defrost the unit, first remove the power plug from the wall socket, open the door, and move all of the appliance's contents to a cool place.

Defrost the unit using the included plastic scraper, or let the temperature rise naturally until the frost melts. Then wipe away the remaining ice and water. When you are finished defrosting the unit, plug the freezer back into the power supply. Do not use metal or other sharp tools to remove frost.

## Energy Saving Guide

- Do not open the door too often, especially when the weather is humid and hot. Once you open the door, close it as soon as possible.
- Occasionally check that the refrigerator is sufficiently ventilated. Make sure there is adequate air circulation behind the refrigerator.
- In normal temperature conditions, leave the thermostat at the middle setting.
- Before loading the refrigerator with food, make sure the food is cooled to the ambient room temperature.
- The ice and frost layer increases energy consumption. Be sure to defrost and clean the refrigerator once this layer reaches a thickness of 1/8".

## Preparing the Refrigerator for Storage

If the refrigerator will not be used for a long time or is to be moved to another place, it will be necessary to defrost the unit and dry the interior.

1. Disconnect the refrigerator from the power supply by removing the power plug from the wall socket.
2. Clean the inside of the unit with a mild detergent or hand soap solution. Dry thoroughly.
3. Leave the door open to allow for air circulation and to prevent mold, mildew, and unpleasant smells.



**Caution:** Store the unit out of reach from children. If you have children, you may want to take precautions such as removing the door to prevent a child from being trapped inside.

## Cleaning and Maintenance

Periodic cleaning and proper maintenance will ensure efficiency, top performance, and long life.

### Exterior Cleaning

The exterior may be cleaned with a mild detergent or hand soap mixed with warm water. Do not use solvent based or abrasive cleaners. Use a soft sponge and rinse with clean water. Wipe with a soft clean towel to prevent water spotting. If the door panel is stainless steel, it can discolor when exposed to chlorine gas and moisture. Clean stainless steel using a cloth dampened with a mild detergent such as lemon juice or vinegar and warm water solution. Never use an abrasive or caustic cleaning agent.

### Interior Cleaning

The refrigerator's interior should be cleaned occasionally.

1. Disconnect power to the unit.
2. Open the door and remove the contents and shelves.
3. Wait until the unit defrosts.
4. With a clean cloth, wipe down the interior of the unit.
5. Reinsert the shelves and items.
6. Reconnect power to the unit.

# Troubleshooting

## Before Calling for Help:

If the unit appears to be malfunctioning, read through the “Operation” section of this manual first. If the problem persists, check the Troubleshooting Guide below and on the following page. The problem may be something that can easily be solved or explained.

<b>Problem</b>	<b>Possible Cause</b>	<b>Solution</b>
The unit turns on and off frequently.	The room temperature is higher than the recommended ambient environment.	Run the refrigerator at the appropriate ambient temperature.
	The door is being opened often.	Minimize the number of times the door is opened.
	The door is not completely closed.	Make sure the door is completely closed.
	The door gasket is not sealing properly.	Make sure the door gasket is properly sealing.
	The refrigerator is not sufficiently ventilated.	This unit requires adequate air circulation behind the appliance.
The unit does not turn on.	There is a power failure.	Ensure the refrigerator is plugged in and the power outlet has power.
	The refrigerator is not plugged in.	Plug the unit in to a power outlet that has sufficient amperage.
	A house fuse has blown or the circuit breaker is tripped.	Replace the broken fuse in your fuse box or reset the breaker.
The refrigerator / freezer will not reach the desired temperature	The refrigerator is placed too close to a heat source.	Keep the refrigerator away from direct sun light or other heat sources.
	The refrigerator is not sufficiently ventilated.	This unit requires adequate air circulation behind the appliance.
	The door is opened too frequently or for a long period of time.	Close the door tightly and do not open the door too frequently or for a long period of time.

<b>Problem</b>	<b>Possible Cause</b>	<b>Solution</b>
The unit is making strange noises	Certain sounds are normal.	Read the “Normal Sounds” section.
	The unit is not level or is touching another appliance.	Check to make sure that the refrigerator is level, and that it is not in contact with another appliance or furniture.
The body of the refrigerator / freezer is electrified.	The unit is not grounded properly.	Contact your local electrician to test your electrical grounding system.
Frost is forming in the refrigerator.	The environment is humid.	Though the unit uses an “auto-defrost” system, under certain conditions, manual defrosting may be required. If frost builds up, you can try running the refrigerator on a warmer temperature setting, minimizing the number of times you open the door, or unplugging the unit to allow the frost to melt.
	The ambient temperature is too low.	
	The door is being opened too frequently.	
The door will not shut properly.	Your refrigerator is not level.	Make sure the refrigerator is on a level surface.
	The door gasket is dirty.	Clean the door gasket.
	The door gasket is not installed correctly.	Make sure the door gasket is properly installed.
	The shelf is incorrectly installed.	Correctly install the shelf.

# Specifications



**Note:** Technical data and performance information are provided for reference only. Specifications are subject to change. Check the rating label on the refrigerator for the most accurate information.

Product Type	Refrigerator and Freezer
Model	<b>CRF321SS</b>
Voltage / Frequency	AC 115V~60Hz
Amperage	0.85A
Color	Stainless Steel / Black
Storage Capacity	3.1 Cu. Ft.
Refrigerant	R600a (1.38 oz)
Temperature Range	Refrigerator: 32°F - 50°F Freezer: -11.2°F - 5°F
Dimensions (Height x Width x Depth )	33 3/8" x 18 11/16" x 19 15/16"



# EdgeStar Limited Warranty

**One Year Parts & 90 Days Labor**

This product is warranted by EdgeStar and is subject to any conditions set forth as follows:

## WHAT IS COVERED:

**LABOR:** For a period of NINETY (90) DAYS from the date of original purchase, labor will be performed free of charge at an authorized EdgeStar repair facility. At its option, EdgeStar will repair the product with new or remanufactured parts, or exchange the defective product with a new, refurbished, or remanufactured product. If a product is replaced, it will carry the remaining warranty of the original product. After the ninety (90) day period, EdgeStar will no longer be responsible for labor charges incurred. All defective products and parts covered by this warranty will be repaired or replaced on a mail-in basis to an EdgeStar authorized repair facility.

**PARTS:** For a period of ONE (1) YEAR from the date of original purchase, EdgeStar will supply new, rebuilt, or refurbished parts free of charge. EdgeStar may request a defective part be returned in exchange for the replacement part. All replacement parts or products will be new, remanufactured, or refurbished. All products and parts replaced by EdgeStar under warranty service become the property of EdgeStar.

This warranty applies to the original purchaser only, and only covers defects in workmanship experienced during operation of the product under normal service, maintenance, and usage conditions. This warranty applies to the purchase and use of this product in residential settings within the United States of America.

## WHAT IS NOT COVERED- The following limitations apply to the coverage of this warranty. This warranty does not cover:

The following limitations apply to the coverage of this warranty. This warranty does not cover:

- Labor charges for installation, setup or training to use the product.
- Shipping damage, and any damage caused by improper packaging for shipment to an authorized service center, and any damaged caused by improper voltage or any other misuse, including abnormal service, handling, or usage.
- Cosmetic damage such as scratches and dents.
- Normal wear and tear on parts or replacement of parts designed to be replaced, e.g. filters, cartridges, batteries.
- Service trips to deliver, pick-up, or repair, install the product, or to instruct in proper usage of the product.
- Damages or operating problems resulting from misuse, abuse, operation outside environmental specifications, uses contrary to instructions provided in the owner's manual, accidents, acts of God, vermin, fire, flood, improper installation, unauthorized service, maintenance negligence, unauthorized installation or modification, or commercial use.
- Labor charges incurred 91 days or more after the date of original purchase.
- The use of EdgeStar products in commercial settings.
- Optional accessories, attachments, and appearance items.
- Products that have been modified to perform outside of specifications without the prior written permission of EdgeStar.
- Products lost in shipment, or theft.
- Products sold AS IS or from an unauthorized reseller.
- Products that have had their serial numbers removed or defaced. Products with serial numbers that have been invalidated.

**OBTAINING WARRANTY SERVICE:** If you believe your product is defective, contact EdgeStar Customer Support for troubleshooting assistance and warranty service at [www.edgestar.com](http://www.edgestar.com) or call 1-866-319-5473. Before contacting Customer Support you are required to have your model number, serial number, and proof of purchase available upon request. Once an EdgeStar authorized representative has confirmed that your product is defective and eligible for warranty service, the product must be returned to an EdgeStar authorized repair facility. EdgeStar is not responsible for damage resulting from shipper mishandling or improper packaging. Do not return a defective product to the place of purchase. Products received without a return authorization number will be refused.

THIS WARRANTY IS IN LIEU OF ANY OTHER WARRANTY, EXPRESS OR IMPLIED, INCLUDING WITHOUT LIMITATION, ANY WARRANTY OF MERCHANTABILITY OR FITNESS FOR A PARTICULAR PURPOSE. TO THE EXTENT ANY IMPLIED WARRANTY IS REQUIRED BY LAW, IT IS LIMITED IN DURATION TO THE EXPRESS WARRANTY PERIOD ABOVE. NEITHER THE MANUFACTURER NOR ITS DISTRIBUTORS SHALL BE LIABLE FOR ANY INCIDENTAL, CONSEQUENTIAL, INDIRECT, SPECIAL, OR PUNITIVE DAMAGES OF ANY NATURE, INCLUDING WITHOUT LIMITATION, LOST REVENUES OR PROFITS, OR ANY OTHER DAMAGE WHETHER BASED IN CONTRACT, TORT, OR OTHERWISE. IN NO EVENT AND UNDER NO CIRCUMSTANCE OF ANY TYPE OR KIND SHALL THE SELLER, MANUFACTURER AND/OR DISTRIBUTOR BE LIABLE FOR ANY REASON, UNDER ANY THEORY, FOR MORE THAN THE BASIC COST OF THE PRODUCT TO THE PURCHASER OR END USER. SOME STATES DO NOT ALLOW THE EXCLUSION OF INCIDENTAL OR CONSEQUENTIAL DAMAGES, SO THE ABOVE EXCLUSION MAY NOT APPLY TO YOU. THIS WARRANTY GIVES YOU SPECIFIC LEGAL RIGHTS. YOU MAY HAVE OTHER RIGHTS THAT VARY FROM STATE TO STATE.

**EDGE STAR<sup>®</sup>**