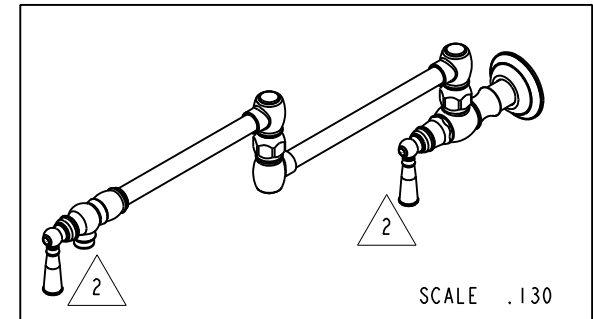
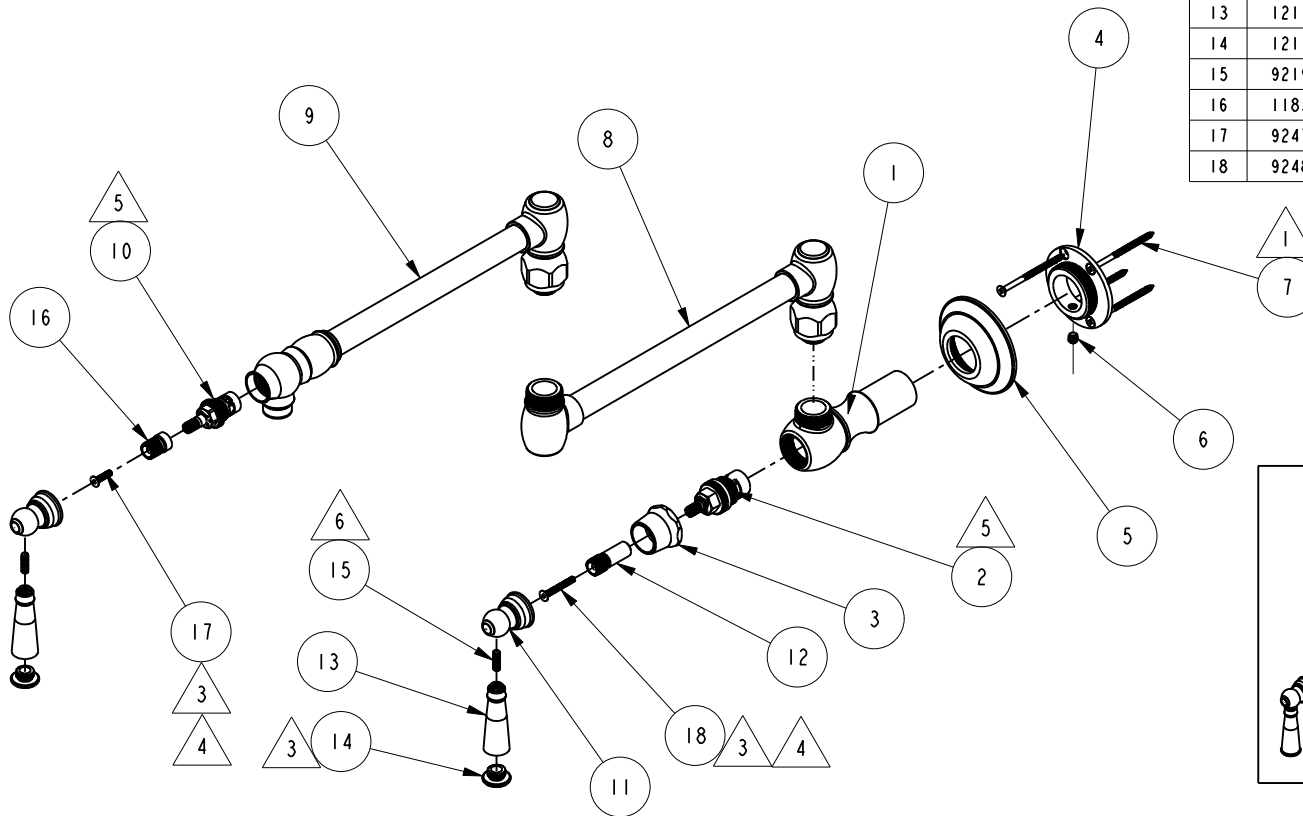


NOTES:

- 1 PACK THESE ITEMS IN A PLASTIC BAG.
- 2 HANDLE IN CLOSE POSITION.
- 3 APPLY LOCTITE 680.
- 4 APPLY LOCTITE ON ITMES 17 & 18 ONLY AFTER ADJUSTING HANDLES IN THEIR OPTIMAL POSITION.
- 5 INSTALLATION TORQUE 11-14 LB-FT.
- 6 APPLY LOCTITE 242.

BILL OF MATERIAL (CURRENT LEVEL)

ITEM	PT/ASSY	DESCRIPTION	TYPE	QTY.
1	11299	VALVE BODY, WALL-END	PART	1
2	1-006	C/S VALVE CARTRIDGE - HOT	PART	1
3	12095	BONNET	PART	1
4	11301	FLANGE, MOUNTING	PART	1
5	2-555	FLANGE ASM, TRAD	ASSEMBLY	1
6	92231	1/4-20 X 1/4 SET SCREW	PART	1
7	92223	WOOD SCREW #8 X 2-1/2	PART	4
8	2-550	LOWER ARM ASM, TRAD	ASSEMBLY	1
9	2-549	UPPER ARM ASM, TRAD	ASSEMBLY	1
10	1-134	CARTR 3/8 HOT 1/4 TR	PART	1
11	11729	BODY HANDLE	PART	2
12	11835	ADAPTER	PART	1
13	12110	LEVER, HANDLE	PART	2
14	12111	CAP, LEVER, HANDLE	PART	2
15	92192	SET SCREW 10-32 X 5/8"	PART	2
16	11834	ADAPTER	PART	1
17	92477	M4 X 16 mm FLAT HD CAP SCREW	PART	1
18	92487	M4 X 30 mm FLAT HD CAP SCREW	PART	1



COPYRIGHT 2005 BRASSTECH, INC. THESE DRAWINGS AND THE DESIGNS DEPICTED HEREIN ARE THE PROPRIETARY PROPERTY OF BRASSTECH. ANY USE OR REPRODUCTION IS SUBJECT TO THE EXPRESS APPROVAL OF BRASSTECH. UNAUTHORIZED USE IS STRICTLY PROHIBITED. ALL RIGHTS RESERVED.

BRASSTECH
INCORPORATED
2001 E. CARNEGIE AVE.
SANTA ANA, CA 92705
(949) 417-5207

JACOBAN TRADITIONAL WALL MOUNT POT FILLER

ASSY. NO. 2470-5503

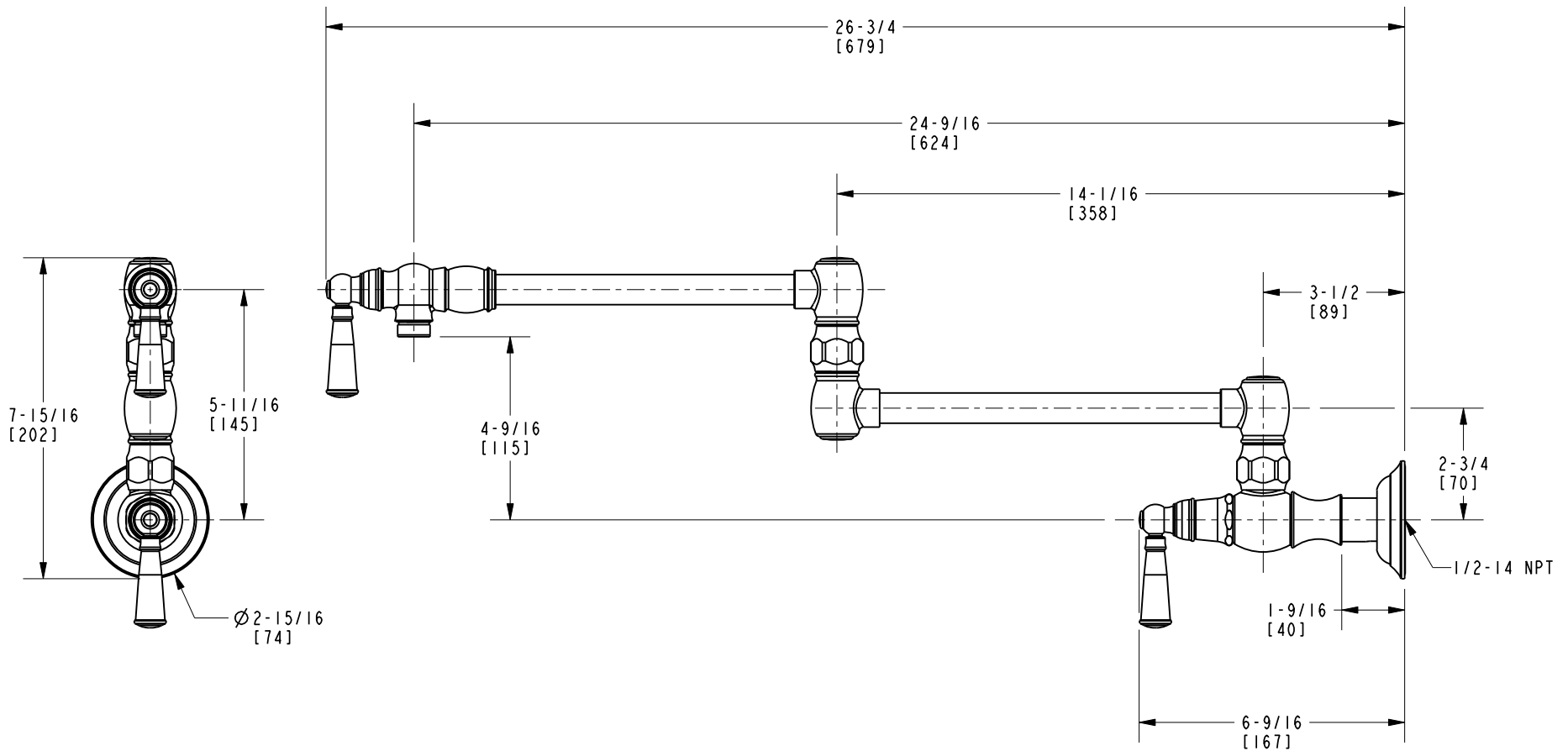
SCALE .188

REF. -

SHEET 1 OF 2

B	EN-2205	08/03/012
A	EN-2085	03/05/12
-	EN-1552-4	02/01/11
REV	REV DESC	DATE

SPECIFICATION DWG



DIMENSIONS ARE IN INCHES AND AN APPROXIMATION OF A TYPICAL INSTALLATION

COPYRIGHT 2005 BRASSTECH, INC. THESE DRAWINGS AND THE DESIGNS DEPICTED HEREIN ARE THE PROPRIETARY PROPERTY OF BRASSTECH. ANY USE OR REPRODUCTION IS SUBJECT TO THE EXPRESS APPROVAL OF BRASSTECH. UNAUTHORIZED USE IS STRICTLY PROHIBITED. ALL RIGHTS RESERVED.

BRASSTECH INCORPORATED		2001 CARNEGIE AVE. SANTA ANA, CA 92705 (949) 417-5207
DWG NO.	2470-5503	REV B
SCALE .250	REF. -	SHEET 2 OF 2