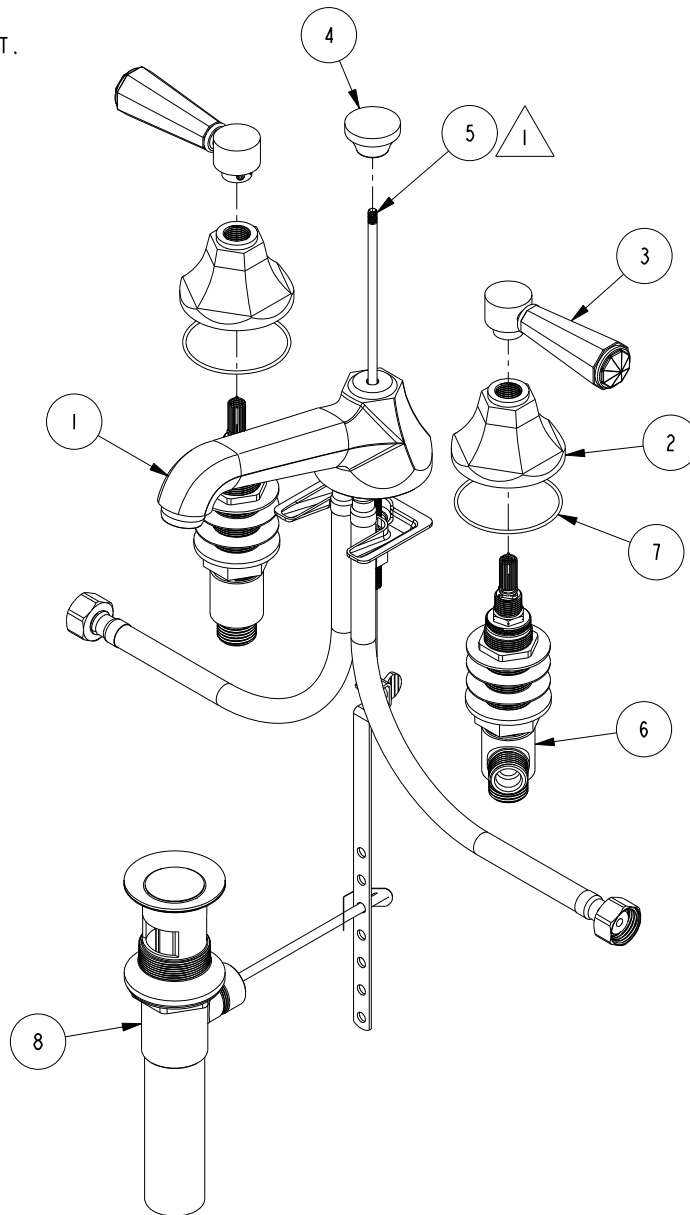


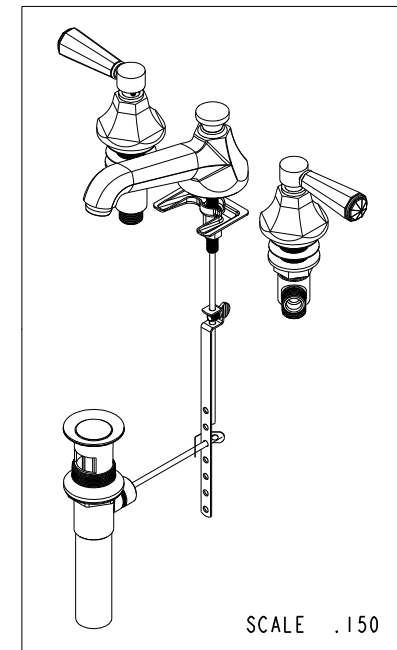
NOTE:

1 APPLY LOCTITE 680 OR EQUIVALENT.



BILL OF MATERIAL (CURRENT LEVEL)

ITEM	PT/ASSY	DESCRIPTION	TYPE	QTY.
1	3-346	ASSY, SPOUT	ASSEMBLY	1
2	10960	HEX ESCUTCHEON	PART	2
3	2-876	CRYSTAL HANDLE LEVER ASM	ASSEMBLY	2
4	10961	SMOOTH POP - UP KNOB	PART	1
5	10288	3/16" POP UP ROD	PART	1
6	1-525	W/S VALVE INSTALLATION	ASSEMBLY	1
7	91386	O-RING, #2-034, EPDM, 65-75 DURO	PART	2
8	325	POP UP ASSEMBLY	ASSEMBLY	1



COPYRIGHT 2005 BRASSTECH, INC. THESE DRAWINGS AND THE DESIGNS DEPICTED HEREIN ARE THE PROPRIETARY PROPERTY OF BRASSTECH. ANY USE OR REPRODUCTION IS SUBJECT TO THE EXPRESS APPROVAL OF BRASSTECH. UNAUTHORIZED USE IS STRICTLY PROHIBITED. ALL RIGHTS RESERVED.

BRASSTECH
INCORPORATED

2001 E. CARNEGIE AVE.
SANTA ANA, CA 92705
(949) 417-5207

WIDESPREAD FAUCET

ASSY. NO.
1230

SCALE .250

REF. -

SHEET 1 OF 2

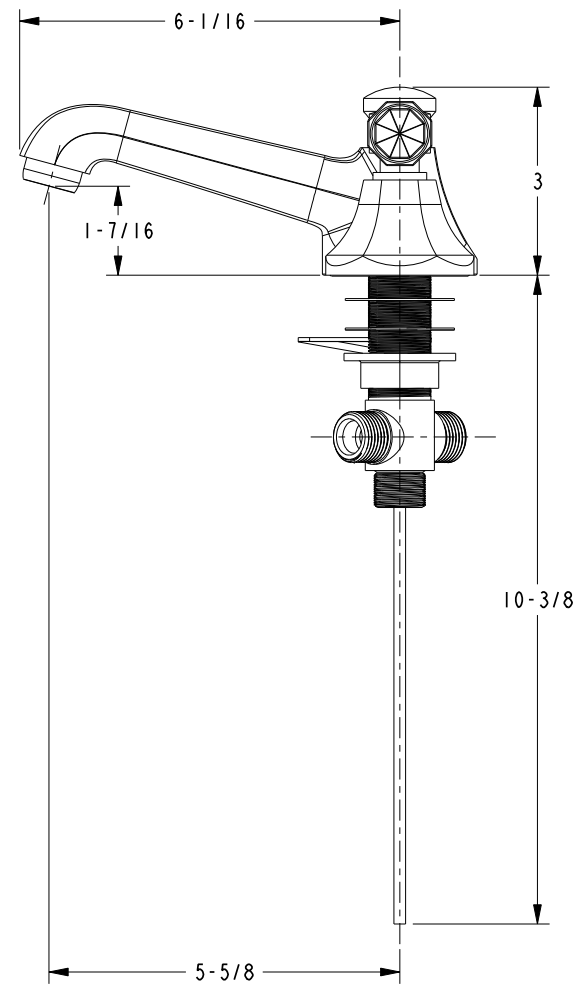
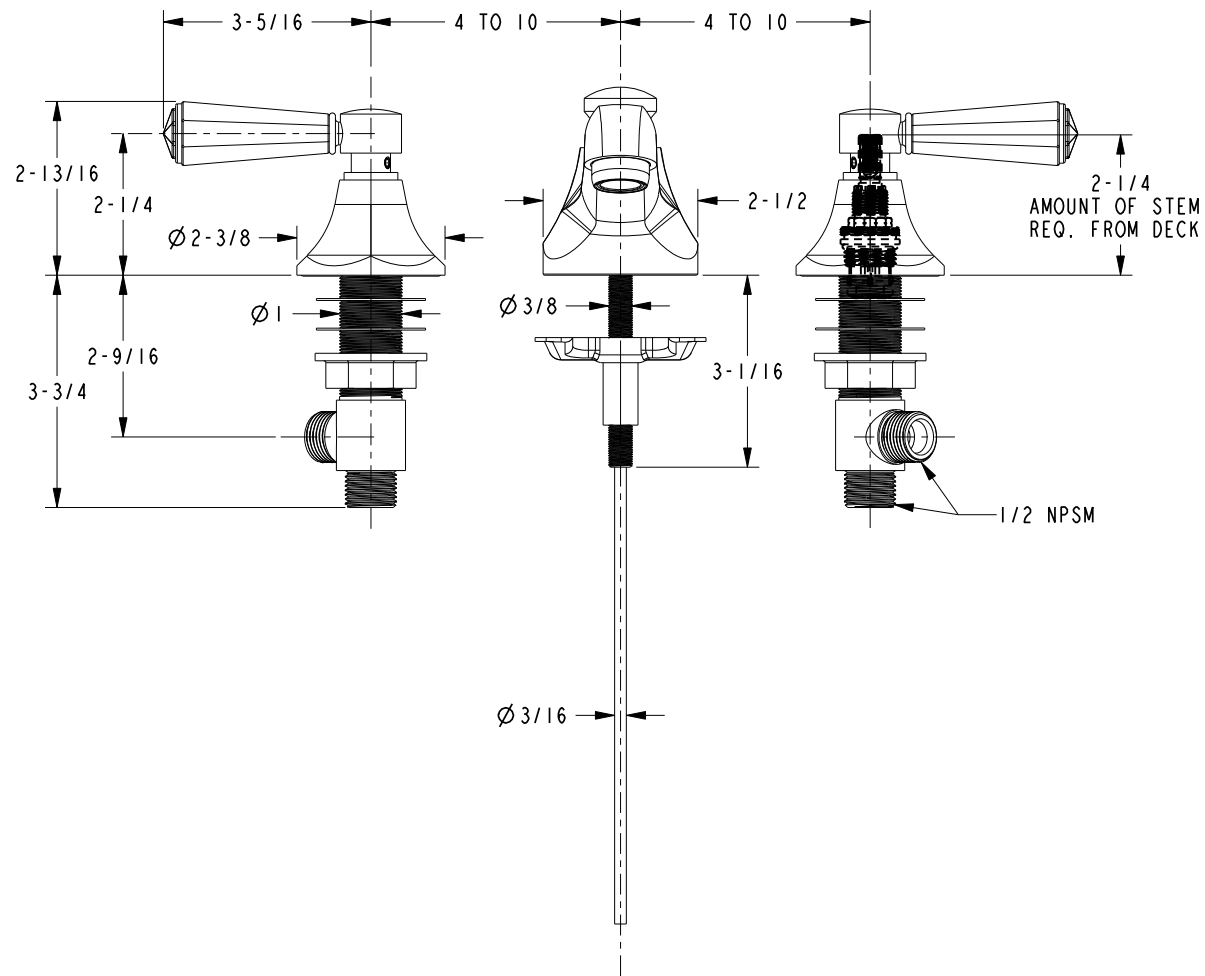
REV

REV DESC

DATE

SCALE .150

SPECIFICATION DWG



DIMENSIONS ARE IN INCHES AND AN APPROXIMATION OF A TYPICAL INSTALLATION

COPYRIGHT 2005 BRASSTECH, INC. THESE DRAWINGS AND THE DESIGNS DEPICTED HEREIN ARE THE PROPRIETARY PROPERTY OF BRASSTECH. ANY USE OR REPRODUCTION IS SUBJECT TO THE EXPRESS APPROVAL OF BRASSTECH. UNAUTHORIZED USE IS STRICTLY PROHIBITED. ALL RIGHTS RESERVED.

BRASSTECH		2001 CARNEGIE AVE. SANTA ANA, CA 92705 (949) 417-5207	
DWG NO.	1230	REV	-
SCALE	.325	REF.	-
SHEET	2	OF	2