

## Features

- Solid brass construction
- Face plate with handle escutcheon and ADA compliant diverter pull-knob
- 1.8 gallons (6.7 liters) per minute maximum flow rate showerhead
- Lever handle is ADA compliant when used with Tub and Shower Trim
- Intended for use with Newport Brass rough valve(s) as specified (Required Accessory)

## Codes / Standards Compliance

Meets or exceeds the following at date of manufacture:

- ASME A112.18.1/CSA B125.1
- IAPMO/cUPC
- IPC
- ADA
- ICC/ANSI A117.1
- ASSE 1016
- Energy Policy Act of 1992
- EPA Watersense
- All applicable US Federal and State material regulations

## Tub and Shower Trim

# 3-8202BP



## Colors / Finishes

- 15: Polished Nickel
- 15S: Satin Nickel - PVD
- 26: Polished Chrome

## Specified Model

Model	Description	Colors   Finishes
3-8202BP	Tub and Shower Trim	<input type="checkbox"/> 15 <input type="checkbox"/> 15S <input type="checkbox"/> 26

## Required Accessory

Model	Description	Colors   Finishes
1-685	BP valve with diverter	<input type="checkbox"/> NA

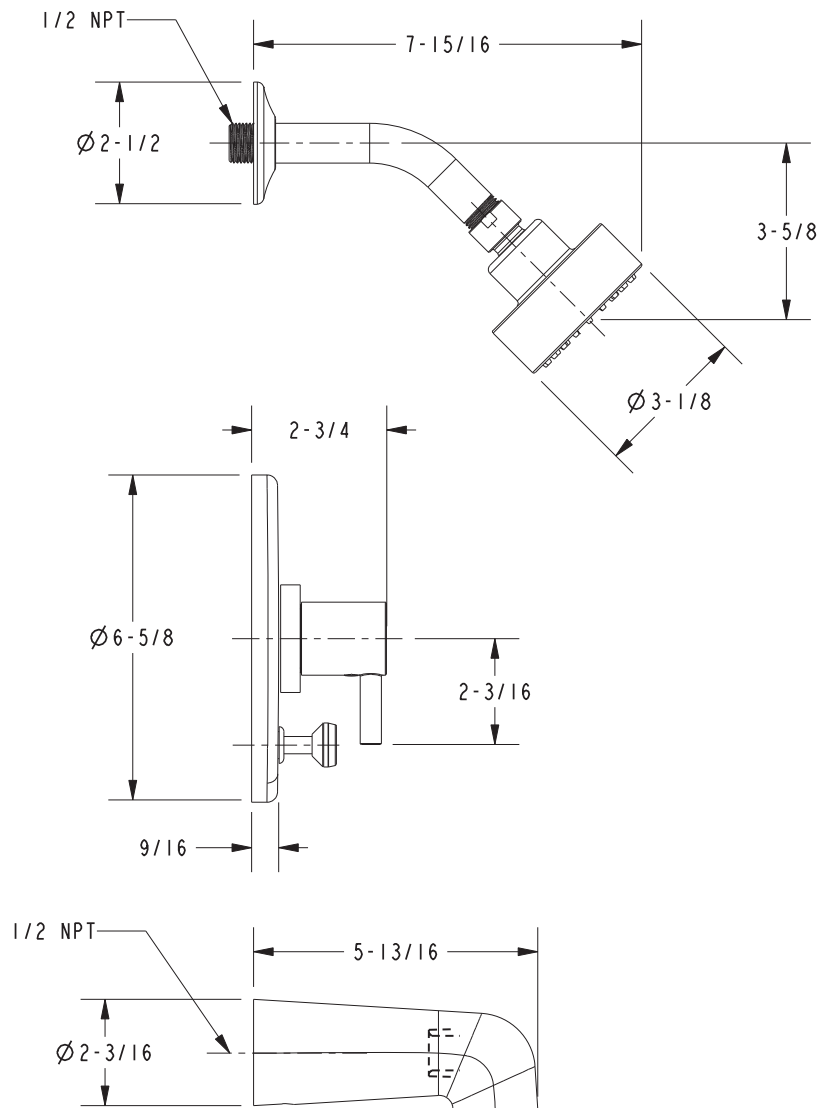
## Product Specification

Add "Length Indicator and Color / Finish" suffix to Model number, below.

The single-control Tub and Shower Trim shall be made of solid brass construction. Tub and Shower Trim shall include showerhead with arm and flange, tub spout and faceplate with escutcheon and ADA compliant diverter pull-knob. Lever handle is ADA compliant when used with Tub and Shower Trim. Showerhead shall have a maximum flow rate of 1.8 gallons (6.7 liters) per minute. Tub and Shower Trim shall be Newport Brass Model 3-8202BP/\_\_\_\_ and single-control Tub and Shower rough valve shall be Newport Brass Model 1-685.

# 3-8202BP

## PRODUCT DIMENSIONS *(Units are in inches)*



Newport 365 Bronwen Tub and Shower Trim

**3-8202BP**

Page 2 of 2 Spec\_3-8202BP\_a\_3.18

**NEWPORT BRASS**  
Flawless Beauty. From Faucet to Finish.™

t: 949.417.5207 | [www.newportbrass.com](http://www.newportbrass.com)  
©2016 Brasstech, Inc.