

# PIVOTING BLOWERS

## PRODUCT INFORMATION

### Motor

3-speed, 1/13 HP, 120V, 1 phase, totally enclosed, ball bearing, permanently lubricated, permanent split capacitor (model 9555)

3-speed, 1/16 HP, 120V, 1 phase, totally enclosed, ball bearing, permanently lubricated, permanent split capacitor (model 9550)

### Controls

Side mounted rotary dial switch

### Power Cord

Black, 10', 3-conductor with GFCI, SO type (model 9555)

Black, 10', 3-conductor, SO type (model 9550)

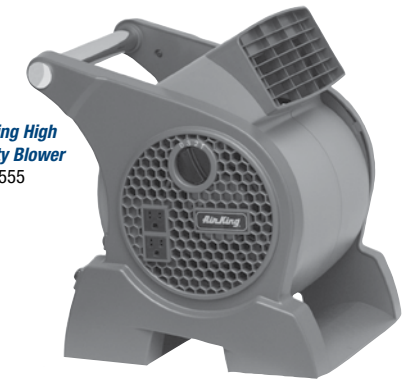
### Construction

Molded ABS Plastic

### Compliance

ETL, OSHA

*Pivoting High Velocity Blower*  
9555



*Pivoting Utility Blower*  
9550

BLADE SIZE	MOTOR SIZE	MODEL NUMBER	DESCRIPTION	CFM			AMPS			SHIP WEIGHT	LIST PRICE
				HIGH	MED	LOW	HIGH	MED	LOW		
7" x 7"	1/13 HP	9555	Pivoting High Velocity Blower	350	300	250	.94	.78	.70	12.8	\$180.00
6" x 6"	1/16 HP	9550	Pivoting Utility Blower	310	269	190	.80	.62	.50	10.1	\$120.00

Tested in accordance with AMCA standard 230-99. • Specifications are subject to change.

# WINDOW FANS

## PRODUCT INFORMATION

### Motor

3-speed, 1/6 HP, 120V, 1 phase, totally enclosed, ball bearing, permanently lubricated, permanent split capacitor (model 9166)

3-speed, 1/6 HP, 120V, 1 phase, permanently lubricated, permanent split capacitor (model 9155)

### Controls

Front mounted rotary switch

### Power Cord

Black, 7', 3-conductor, SPT-2-R type (model 9166)

White, 7', 3-conductor, SPT-2-R type (model 9155)

### Construction

Impact resistant plastic housing, powder coated steel front grill and blade (model 9166)

High impact styrene housing, ABS plastic blade, and metal front grill (model 9155)

### Compliance

ETL, OSHA

### Window Size Requirements

27" to 38" x 26.25"H (model 9166)

26.5" to 34.5" x 22"H (model 9155)



*Whole House Window Fan*  
9166



*Window Fan*  
9155

BLADE SIZE	MOTOR SIZE	MODEL NUMBER	DESCRIPTION	CFM			AMPS			SHIP WEIGHT	LIST PRICE
				HIGH	MED	LOW	HIGH	MED	LOW		
20"	1/6 HP	9166	20" Whole House Window Fan	3560	3120	2510	1.40	1.30	1.0	36.0	\$280.00
16"	1/6 HP	9155	16" Window Fan	2470	1700	1360	.83	.55	.45	15.0	\$180.00

Tested in accordance with AMCA standard 230-99. • Specifications are subject to change.

