



AIR CONDITIONERS

Features

- Outdoor air conditioner designed for ground level or rooftop installations. These units offer comfort and dependability for single, multi-family and light commercial applications.
- Painted louvered steel cabinet
- Easily accessible control box
- Condenser coils constructed with copper tubing and enhanced aluminum fins
- Grille/Motor mount for quiet fan operation
- Filter Drier (shipped – not installed)

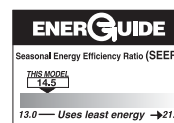


WA14**W- SERIES

Efficiency 14 SEER/11.7-12.2 EER

Nominal Sizes 1.5 to 5 Ton

[5.28 to 17.6 kW]



“Proper sizing and installation of equipment is critical to achieve optimal performance. Split system air conditioners and heat pumps must be matched with appropriate coil components to meet ENERGY STAR criteria. Ask your Contractor for details or visit www.energystar.gov.”

TABLE OF CONTENTS

Model Number Identification	3-4
Electrical & Physical Data	5
Unit Dimensions	6
Refrigerant Line Size Information.....	7
Performance Data	8-10
Limited Warranty	11

Air Conditioners*

<u>W</u>	<u>A</u>	<u>14</u>	<u>24</u>	<u>W</u>	<u>J</u>	<u>1</u>	<u>N</u>	<u>A</u>	<u>*</u>
Brand	Product Category	SEER	Capacity BTU/HR	Major Series*	Voltage	Type	Controls	Minor Series**	Option Code
Weather King	A - Air Conditioners	13 - 13 SEER 14 - 14 SEER	18 - 18,000 [5.28 kW] 24 - 24,000 [7.03 kW] 30 - 30,000 [8.79 kW] 36 - 36,000 [10.55 kW] 42 - 42,000 [12.31 kW] 48 - 48,000 [14.07 kW] 60 - 60,000 [17.58 kW]	A - 1st Design W - Southwest Region	J - 1ph, 208-230/60 C - 3ph, 208-230/60 D - 3ph, 460/60	1 - Single-stage	N - Non-Communicating	A - 1st Design	N/A

Heat Pumps (For Reference)**

<u>W</u>	<u>P</u>	<u>14</u>	<u>24</u>	<u>A</u>	<u>J</u>	<u>1</u>	<u>N</u>	<u>A</u>	<u>*</u>
Brand	Product Category	SEER	Capacity BTU/HR	Major Series*	Voltage	Type	Controls	Minor Series**	Option Code
WeatherKing	P - Heat Pump	13 - 13 SEER 14 - 14 SEER	18 - 18,000 [5.28 kW] 24 - 24,000 [7.03 kW] 30 - 30,000 [8.79 kW] 36 - 36,000 [10.55 kW] 42 - 42,000 [12.31 kW] 48 - 48,000 [14.07 kW] 60 - 60,000 [17.58 kW]	A - 1st Design	J - 1ph, 208-230/60	1 - Single-stage	N - Non-Communicating	A - 1st Design	N/A

Furnace Coils (For Reference)**

<u>T</u>	<u>C</u>	<u>F</u>	<u>24</u>	<u>17</u>	<u>S</u>	<u>T</u>	<u>A</u>	<u>M</u>	<u>C</u>	<u>A</u>	<u>*</u>
Brand	Product Category	Type	Capacity BTU/HR	Width	Efficiency	Metering Device	Major Series*	Orientation	Casing	Minor Series**	Option Code
Generic	C - Evap Coil	F - Furn Coil H - Air-Handler Coil	24 - 24,000 [7.03 kW] 36 - 36,000 [10.55 kW] 48 - 48,000 [14.07 kW] 60 - 60,000 [17.58 kW]	14 - 14" 17 - 17.5" 21 - 21" 24 - 24.5"	S - Standard Eff. M - Mid Eff. H - High Eff.	T-TXV E-EEV P-Piston	A - 1st Design	M - Multipoise V - Vertical only/ convertible H - Ded. Horizontal only	C - Cased U - Uncased	A - 1st Design	N/A

[J] Designates Metric Conversions

90%+ AFUE Gas Furnaces (For Reference)**

<u>W</u>	<u>92</u>	<u>P</u>	<u>A</u>	<u>70</u>	<u>2</u>	<u>3</u>	<u>17</u>	<u>M</u>	<u>S</u>	<u>A</u>
Brand	Series	Motor	Major Rev	Input BTU/HR	Stages	Air Flow	Cabinet Width	Configuration	Nox	Minor Rev
WeatherKing	92 - 92 AFUE 96 - 96 AFUE	P - PSC	A - 1st Design	040 - 42,000 [12.31 kW] 060 - 56,000 [16.41 kW] 070 - 70,000 [20.51 kW] 085 - 84,000 [24.62 kW] 100 - 98,000 [28.72 kW] 115 - 112,000 [32.82 kW]	1 - Single-stage	3 - up to 3 ton 5 - 3 1/2 up to 5 ton	14 - 14" 17 - 17.5" 21 - 21" 24 - 24.5"	M - Multi	X - Low Nox S - Standard	A - 1st Design

80% AFUE Gas Furnaces (For Reference)**

<u>W</u>	<u>80</u>	<u>1</u>	<u>S</u>	<u>A</u>	<u>075</u>	<u>3</u>	<u>17</u>	<u>M</u>	<u>S</u>	<u>A</u>
Brand	Series	Stages	Motor	Major Rev	Input BTU/HR	Air Flow	Cabinet Width	Configuration	Nox	Minor Rev
WeatherKing	80 - 80+ AFUE	1 - Single-stage	S - PSC standard	A - 1st Design	050 - 50,000 [15 kW] 075 - 75,000 [22 kW] 100 - 100,000 [29 kW] 125 - 125,000 [37 kW] 150 - 150,000 [44 kW]	3 - up to 3 ton 4 - 2 1/2 to 4 ton 5 - 3 1/2 up to 5 ton	14 - 14" 17 - 17.5" 21 - 21" 24 - 24.5"	M - Multi Z - Down & zero clearance down flow	X - Low Nox S - Standard	A - 1st Design

Air Handlers (For Reference)**

<u>W</u>	<u>H</u>	<u>1</u>	<u>I</u>	<u>36</u>	<u>17</u>	<u>S</u>	<u>I</u>	<u>A</u>	<u>N</u>	<u>A</u>	<u>*</u>	<u>-</u>	
Brand	Product Category	Stages of Airflow	Motor Type	Capacity BTU/HR	Width	Coil Size	Metering Device	Major Series*	Controls	Voltage	Minor Series**	Factory Heat Cap	Option Code
Weather King	H - Air Handler	1 - Single-Stage	T - Constant Torque P - PSC	24 - 24,000 [7.03 kW] 36 - 36,000 [10.55 kW] 48 - 48,000 [14.07 kW] 60 - 60,000 [17.58 kW]	14 - 14" 17 - 17.5" 21 - 21" 24 - 24.5"	S - Standard Eff. M - Mid Eff. H - High Eff.	T - TEV	A - 1st Design	N - Non-comm	A - 1ph, 115/60 J - 1ph, 208-240/60 D - 3ph, 480/60	A - 1st Design	00 - no factory heat with option code	* TBD

[] Designates Metric Conversions

Electrical and Physical Data

Model Number WA 14**W	ELECTRICAL							PHYSICAL					
	Phase Frequency (Hz) Voltage (Volts)	Compressor		Fan Motor Full Load Amperes (FLA)	Minimum Circuit Capacity Amperes	Fuse or HACR Circuit Breaker		Outdoor Coil			Refrig. Per Circuit Oz. [g]	Weight	
		Rated Load Amperes (RLA)	Locked Rotor Amperes (LRA)			Minimum Amperes	Maximum Amperes	Face Area Sq. Ft. [m ²]	No. Rows	CFM [L/s]		Net Lbs. [kg]	Shipping Lbs. [kg]
18	1-60-208/230	9/9	46	0.5	12/12	15/15	20/20	11.80 [1.1]	1	2200 [1038]	80.9 [2293]	150 [68.0]	157 [63.5]
24	1-60-208/230	13.5/13.5	58.3	0.8	18/18	25/25	30/30	13.72 [1.2]	1	2007 [947]	75.8 [2148]	164 [74.3]	171 [69.9]
30	1-60-208/230	12.8/12.8	64	0.68	18/18	25/25	30/30	13.72 [1.2]	1	2915 [1375]	83.5 [2367]	168 [76.2]	175 [71.2]
36	1-60-208/230	15.4/15.4	79	1.0	21/21	25/25	35/35	21.85 [2.03]	1	3431 [1619]	100.8 [2857]	194 [91.1]	201 [82.1]
42	1-60-208/230	16.0/16.0	88	2.8	23/23	30/30	35/35	21.85 [2.03]	1	3431 [1619]	165 [4734]	218 [98.8]	225 [93]
48	1-60-208/230	21.8/21.8	117	2.8	31/31	40/40	50/50	21.85 [2.03]	2	3615 [1706]	133 [3770]	262 [118.8]	269 [112.9]
60	1-60-208/230	26.4/26.4	134	1.7	36/36	45/45	60/60	21.85 [2.03]	2	3615 [1706]	170.2 [4825]	254 [115.2]	274 [115.2]

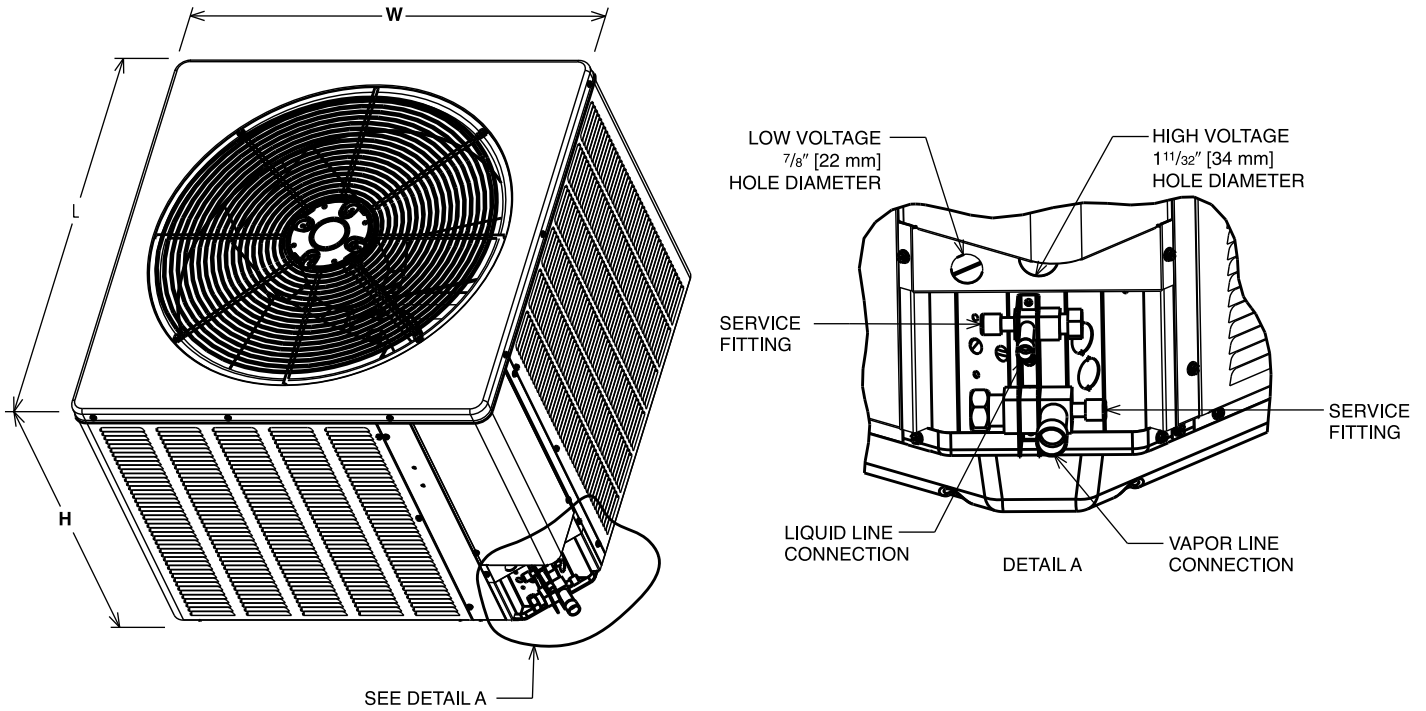
NOTE: Factory Refrigerant Charge includes refrigerant for 15 feet of standard line set.

[] Designates Metric Conversions

Unit Dimensions

Model No. WA14**W	Unit Dimensions		
	Width "W" Inches [mm]	Length "L" Inches [mm]	Height "H" Inches [mm]
18, 24	27 ⁵ / ₈ [702]	27 ⁵ / ₈ [702]	24 ¹ / ₄ [616]
30	31 ⁵ / ₈ [803]	31 ⁵ / ₈ [803]	27 ³ / ₈ [695]
36, 42, 48, 60	31 ⁵ / ₈ [803]	31 ⁵ / ₈ [803]	35 ³ / ₈ [899]

[] Designates Metric Conversions



NOTE: Illustrations show the deep drawn basepan.

Condensing Unit Refrigerant Line Size Information

Liquid Line Sizing (R-410A)														
System Capacity	Liquid Line Connection Size (Inch I.D.)	Line Size (Inch O.D.) [mm]	Liquid Line Size – Outdoor Unit Above Indoor Coil (Cooling Only—Does not apply to Heat Pumps)						Liquid Line Size – Outdoor Unit Below Indoor Coil					
			Total Equivalent Length—Feet [m]						Total Equivalent Length—Feet [m]					
			25 [7.62]	50 [15.24]	75 [22.86]	100 [30.48]	125 [38.10]	150 [45.72]	25 [7.62]	50 [15.24]	75 [22.86]	100 [30.48]	125 [38.10]	150 [45.72]
			Minimum Vertical Separation—Feet [m]						Maximum Vertical Separation—Feet [m]					
-18	3/8" [9.53]	1/4 [6.35]	0	0	0	5 [1.52]	19 [5.79]	33 [10.06]	25 [7.62]	24 [7.32]	10 [3.05]	N/A	N/A	N/A
		5/16 [7.93]	0	0	0	0	0	0	25 [7.62]	45 [13.72]	41 [12.50]	38 [11.58]	34 [10.36]	30 [9.14]
		3/8* [9.53]	0	0	0	0	0	0	25 [7.62]	50 [15.24]	49 [14.94]	47 [14.33]	46 [14.02]	45 [13.72]
-24	3/8" [9.53]	1/4 [6.35]	0	10 [3.05]	36 [10.97]	61 [18.59]	87 [26.52]	112 [34.14]	16 [4.88]	N/A	N/A	N/A	N/A	N/A
		5/16 [7.93]	0	0	0	0	0	0	25 [7.62]	28 [8.53]	22 [6.71]	15 [4.57]	9 [2.74]	N/A
		3/8* [9.53]	0	0	0	0	0	0	25 [7.62]	37 [11.28]	34 [10.36]	32 [9.75]	30 [9.14]	28 [8.53]
-30	3/8" [9.53]	1/4 [6.35]	0	10 [3.05]	42 [12.80]	74 [22.56]	107 [32.61]	139 [42.37]	23 [7.01]	N/A	N/A	N/A	N/A	N/A
		5/16 [7.93]	0	0	0	0	0	0	25 [7.62]	39 [11.89]	31 [9.45]	22 [6.71]	14 [4.27]	N/A
		3/8* [9.53]	0	0	0	0	0	0	25 [7.62]	50 [15.24]	47 [14.33]	44 [13.41]	41 [12.50]	38 [11.58]
-36	3/8" [9.53]	5/16 [7.93]	0	0	0	0	6 [1.83]	18 [5.49]	25 [7.62]	30 [9.14]	18 [5.49]	N/A	N/A	N/A
		3/8* [9.53]	0	0	0	0	0	0	25 [7.62]	45 [13.72]	41 [12.50]	37 [11.28]	33 [10.06]	29 [8.84]
		1/2 [12.70]	0	0	0	0	0	0	25 [7.62]	50 [15.24]	51 [15.55]	50 [15.24]	49 [14.94]	48 [14.63]
-42	3/8" [9.53]	5/16 [7.93]	0	0	0	16 [4.88]	32 [9.75]	48 [14.63]	25 [7.62]	16 [4.88]	N/A	N/A	N/A	N/A
		3/8* [9.53]	0	0	0	0	0	0	25 [7.62]	37 [11.28]	31 [9.45]	26 [7.93]	20 [6.10]	15 [4.57]
		1/2 [12.70]	0	0	0	0	0	0	25 [7.62]	45 [13.72]	44 [13.41]	43 [13.11]	42 [12.80]	41 [12.50]
-48	3/8" [9.53]	5/16 [7.93]	0	0	7 [2.13]	27 [8.23]	48 [14.63]	69 [21.03]	25 [7.62]	14 [4.27]	N/A	N/A	N/A	N/A
		3/8* [9.53]	0	0	0	0	0	0	25 [7.62]	41 [12.50]	34 [10.36]	27 [8.23]	20 [6.10]	13 [3.96]
		1/2 [12.70]	0	0	0	0	0	0	25 [7.62]	50 [15.24]	51 [15.55]	49 [14.94]	48 [14.63]	46 [14.02]
-60	3/8" [9.53]	3/8* [9.53]	0	0	0	0	0	11 [3.35]	25 [7.62]	32 [9.75]	21 [6.40]	11 [3.35]	N/A	N/A
		1/2 [12.70]	0	0	0	0	0	0	25 [7.62]	49 [14.94]	47 [14.33]	45 [13.72]	43 [13.11]	41 [12.50]

NOTES: *Standard line size
N/A = Application not recommended.

Suction Line Length/Size versus Capacity Multiplier (R-410A)								
Unit Size	1 1/2 Ton	2 Ton	2 1/2 Ton	3 Ton	3 1/2 Ton	4 Ton	5 Ton	
Suction Line Connection Size	3/4" [19.05] I.D.				7/8" [22.23] I.D.			
Suction Line Run—Feet [m]	5/8" [15.88 mm] O.D. Optional 3/4" [19.05 mm] O.D. Standard*	5/8" [15.88 mm] O.D. Optional 3/4" [19.05 mm] O.D. Standard* 7/8" [22.23 mm] O.D. Optional	3/4" [19.05 mm] O.D. Optional 7/8" [22.23 mm] O.D. Standard*	3/4" [19.05 mm] O.D. Optional 7/8" [22.23 mm] O.D. Standard*	7/8" [22.23 mm] O.D. Optional 1 1/8" [28.58 mm] O.D. Standard*			
25' [7.62]	Optional Standard Optional	1.00 1.00 —	1.00 1.00 —	1.00 1.00 1.00	1.00 1.00 —	1.00 1.00 —	1.00 1.00 —	1.00 1.00 —
50' [15.24]	Optional Standard Optional	.98 .99 —	.98 .99 —	.96 .98 .99	.98 .99 —	.99 .99 —	.99 .99 —	.99 .99 —
100' [30.48]	Optional Standard Optional	.95 .96 —	.95 .96 —	.94 .96 .97	.96 .97 —	.96 .98 —	.96 .98 —	.97 .98 —
150' [45.72]	Optional Standard Optional	.92 .93 —	.92 .94 —	.91 .93 .95	.94 .95 —	.94 .96 —	.95 .96 —	.94 .97 —

NOTES: *Standard line size
Using suction line larger than shown in chart will result in poor oil return and is not recommended.
3 Ton Suction Line Connection is 3/4"

[] Designates Metric Conversions

Performance Data @ AHRI Standard Conditions—Cooling

High Sales Volume Tested Combination (HSVTC)								
Outdoor Unit	Indoor Coil or Air Handler	Total Capacity BTU/H [kW]	Net Sensible BTU/H [kW]	Net Latent BTU/H [kW]	SEER	EER	Indoor CFM [L/s]	AHRI#
WA1418WJ1	TCFL-H*2417+RXMD-C04	18000 [5.3]	13300 [3.9]	4700 [1.4]	14.00	12.20	600 [283.2]	8937990
WA1424WJ1	TCFL-H*2617+RXMD-C04	24000 [7.0]	17500 [5.1]	6500 [1.9]	14.00	12.20	800 [377.6]	8937992
WA1430WJ1	TCF3617STA+RXMD-C04	28600 [8.4]	20400 [6.0]	8200 [2.4]	14.00	12.20	975 [460.1]	8937994
WA1436WJ1	TCF3621STA+RXMD-C04	36000 [10.6]	26200 [7.7]	9800 [2.9]	14.00	12.20	1125 [530.9]	8937996
WA1442WJ1	TCF4821STA+RXMD-C04	40500 [11.9]	31000 [9.1]	9500 [2.8]	14.00	12.20	1350 [637.1]	8937998
WA1448WJ1	TCF4821STA+RXMD-C04	46500 [13.6]	34100 [10.0]	12400 [3.6]	14.00	11.70	1375 [648.9]	8937130
WA1460WJ1	TCFL-H*6024+RXMD-C04	59500 [17.4]	41000 [12.0]	18500 [5.4]	14.00	11.70	1600 [755.1]	8937999

[] Designates Metric Conversions

Performance Data @ AHRI Standard Conditions—Cooling (con't.)

Coil Only Ratings								
Outdoor Unit	Indoor Coil	Total Capacity BTU/H [kW]	Net Sensible BTU/H [kW]	Net Latent BTU/H [kW]	SEER	EER	Indoor CFM [L/s]	AHRI#
WA1418WJ1	TCF2414STA+RXMD-C04	18000 [5.3]	13300 [3.9]	4700 [1.4]	14.00	12.20	600 [283.2]	8937040
	TCF2417HTA+RXMD-C04	18000 [5.3]	13300 [3.9]	4700 [1.4]	14.00	12.20	600 [283.2]	8937041
	TCF2417MTA+RXMD-C04	18000 [5.3]	13300 [3.9]	4700 [1.4]	14.00	12.20	600 [283.2]	8937042
	TCF2417STA+RXMD-C04	18000 [5.3]	13300 [3.9]	4700 [1.4]	14.00	12.20	600 [283.2]	8937043
	TCF2421MTA+RXMD-C04	18000 [5.3]	13300 [3.9]	4700 [1.4]	14.00	12.20	600 [283.2]	8937045
	TCF2421HTA+RXMD-C04	18000 [5.3]	13300 [3.9]	4700 [1.4]	14.00	12.20	600 [283.2]	8937044
WA1424WJ1	TCF2414STA+RXMD-C04	24000 [7.0]	18000 [5.3]	6000 [1.8]	14.00	12.20	800 [377.6]	8937058
	TCF2417STA+RXMD-C04	23800 [7.0]	17700 [5.2]	6100 [1.8]	14.00	12.20	800 [377.6]	8937059
WA1430WJ1	TCF3621HTA+RXMD-C04	30000 [8.8]	21400 [6.3]	8600 [2.5]	14.00	12.20	1000 [471.9]	8937075
	TCF3621MTA+RXMD-C04	30000 [8.8]	21400 [6.3]	8600 [2.5]	14.00	12.20	1000 [471.9]	8937076
	TCF3621STA+RXMD-C04	28400 [8.3]	19100 [5.6]	9300 [2.7]	14.00	12.20	1000 [471.9]	8937077
	TCF3624HTA+RXMD-C04	30000 [8.8]	21400 [6.3]	8600 [2.5]	14.00	12.20	1000 [471.9]	8937078
	TCF3624MTA+RXMD-C04	30000 [8.8]	21400 [6.3]	8600 [2.5]	14.00	12.20	1000 [471.9]	8937079
WA1436WJ1	TCF3617STA+RXMD-C04	35400 [10.4]	24100 [7.1]	11300 [3.3]	14.00	12.20	1075 [507.3]	8937096
	TCF3621HTA+RXMD-C04	36000 [10.6]	26200 [7.7]	9800 [2.9]	14.00	12.20	1200 [566.3]	8937097
	TCF3621MTA+RXMD-C04	36000 [10.6]	26200 [7.7]	9800 [2.9]	14.00	12.20	1200 [566.3]	8937098
	TCF3624HTA+RXMD-C04	36000 [10.6]	26200 [7.7]	9800 [2.9]	14.00	12.20	1200 [566.3]	8937099
	TCF3624MTA+RXMD-C04	36000 [10.6]	26200 [7.7]	9800 [2.9]	14.00	12.20	1200 [566.3]	8937100
WA1442WJ1	TCF4821MTA+RXMD-C04	41500 [12.2]	30000 [8.8]	11500 [3.4]	14.00	12.20	1400 [660.7]	8937114
	TCF4824HTA+RXMD-C04	42000 [12.3]	30300 [8.9]	11700 [3.4]	14.00	12.20	1400 [660.7]	8937115
	TCF4824STA+RXMD-C04	40500 [11.9]	29600 [8.7]	10900 [3.2]	14.00	12.20	1375 [648.9]	8937116
WA1448WJ1	TCF4821MTA+RXMD-C04	48000 [14.1]	35000 [10.3]	13000 [3.8]	14.00	11.70	1550 [731.5]	8937129
	TCF4821STA+RXMD-C04	46500 [13.6]	34100 [10.0]	12400 [3.6]	14.00	11.70	1375 [648.9]	8937130
	TCF4824HTA+RXMD-C04	48000 [14.1]	34200 [10.0]	13800 [4.0]	14.00	11.70	1600 [755.1]	8937131
	TCF4824STA+RXMD-C04	46500 [13.6]	34100 [10.0]	12400 [3.6]	14.00	11.70	1375 [648.9]	8937132

[] Designates Metric Conversions

Performance Data @ AHRI Standard Conditions—Cooling

Air Handler Ratings								
Outdoor Unit	Air Handler	Total Capacity BTU/H [kW]	Net Sensible BTU/H [kW]	Net Latent BTU/H [kW]	SEER	EER	Indoor CFM [L/s]	AHRI#
WA1418WJ1	RF1P1821STAN	18000 [5.3]	13300 [3.9]	4700 [1.4]	14.00	12.20	550 [259.6]	8937046
	RF1T2421MTAN	18000 [5.3]	13300 [3.9]	4700 [1.4]	14.00	12.20	625 [295.0]	8937047
	WBHP-17	18000 [5.3]	13300 [3.9]	4700 [1.4]	14.00	12.20	600 [283.2]	8937039
	WH1P1817STAN	18000 [5.3]	13300 [3.9]	4700 [1.4]	14.00	12.20	600 [283.2]	8937048
	WH1T2417STAN	18000 [5.3]	13300 [3.9]	4700 [1.4]	14.00	12.20	600 [283.2]	8937049
WA1424WJ1	RF1P2421STAN	23800 [7.0]	17900 [5.2]	5900 [1.7]	14.00	12.20	800 [377.6]	8937060
	RF1T2421MTAN	23400 [6.9]	17100 [5.0]	6300 [1.8]	14.00	12.20	625 [295.0]	8937061
	WBHP-17	23800 [7.0]	16300 [4.8]	7500 [2.2]	14.00	12.20	800 [377.6]	8937057
	WH1P2417STAN	23800 [7.0]	17700 [5.2]	6100 [1.8]	14.00	12.20	800 [377.6]	8937062
	WH1T2417STAN	24000 [7.0]	17500 [5.1]	6500 [1.9]	14.00	12.20	800 [377.6]	8937063
WA1430WJ1	RF1T3624MTAN	30000 [8.8]	21400 [6.3]	8600 [2.5]	14.00	12.20	1025 [483.7]	8937080
	WBHP-21	29200 [8.6]	21400 [6.3]	7800 [2.3]	14.00	12.20	1000 [471.9]	8937074
	WH1T3617STAN	29200 [8.6]	21000 [6.2]	8200 [2.4]	14.00	12.20	1000 [471.9]	8937081
	WH1T3621HTAN	30000 [8.8]	21400 [6.3]	8600 [2.5]	14.00	12.20	1000 [471.9]	8937082
	WH1T3621MTAN	30000 [8.8]	21400 [6.3]	8600 [2.5]	14.00	12.20	975 [460.1]	8937083
WA1436WJ1	RF1T3624MTAN	36000 [10.6]	26200 [7.7]	9800 [2.9]	14.00	12.20	1025 [483.7]	8937101
	WBHP-21	36000 [10.6]	26200 [7.7]	9800 [2.9]	14.00	12.20	1200 [566.3]	8937095
	WH1T3617STAN	36000 [10.6]	26200 [7.7]	9800 [2.9]	14.00	12.20	1200 [566.3]	8937102
	WH1T3621HTAN	36000 [10.6]	26200 [7.7]	9800 [2.9]	14.00	12.20	1200 [566.3]	8937103
	WH1T3621MTAN	36000 [10.6]	26200 [7.7]	9800 [2.9]	14.00	12.20	975 [460.1]	8937104
WA1442WJ1	WBHP-24	40500 [11.9]	27900 [8.2]	12600 [3.7]	14.00	12.20	1400 [660.7]	8937113
	WH1T3621MTAN	40000 [11.7]	29400 [8.6]	10600 [3.1]	14.00	12.20	1150 [542.7]	8937117
	WH1T4821MTAN	42000 [12.3]	30900 [9.1]	11100 [3.3]	14.00	12.20	1400 [660.7]	8937118
	WH1T4821STAN	41000 [12.0]	31800 [9.3]	9200 [2.7]	14.00	12.20	1400 [660.7]	8937119
WA1448WJ1	WBHP-24	47500 [13.9]	32400 [9.5]	15100 [4.4]	14.00	11.70	1600 [755.1]	8937128
	WH1P4821STAN	47000 [13.8]	33600 [9.8]	13400 [3.9]	14.00	11.70	1500 [707.9]	8937133
	WH1T4821MTAN	48000 [14.1]	34200 [10.0]	13800 [4.0]	14.00	11.70	1600 [755.1]	8937134
	WH1T4821STAN	47500 [13.9]	33500 [9.8]	14000 [4.1]	14.00	11.70	1400 [660.7]	8937135
	WH1T4824STAN	48000 [14.1]	34900 [10.2]	13100 [3.8]	14.00	11.70	1550 [731.5]	8937136
WA1460WJ1	WH1T6021STAN	58000 [17.0]	38000 [11.1]	20000 [5.9]	14.00	11.70	1575 [743.3]	8937137
	WH1T6024STAN	60000 [17.6]	39400 [11.5]	20600 [6.0]	14.00	11.70	1600 [755.1]	8937138

[] Designates Metric Conversions

GENERAL TERMS OF LIMITED WARRANTY*

WeatherKing will furnish a replacement for any part of this product which fails in normal use and service within the applicable period stated, in accordance with the terms of the limited warranty.

***For complete details of the Limited and Conditional Warranties, including applicable terms and conditions, contact your local contractor or the Manufacturer for a copy of the product warranty certificate.**

Conditional Parts
(Registration Required)Five (5) Years

Before proceeding with installation, refer to installation instructions packaged with each model, as well as complying with all Federal, State, Provincial, and Local codes, regulations, and practices.



"In keeping with its policy of continuous progress and product improvement, WeatherKing reserves the right to make changes without notice."