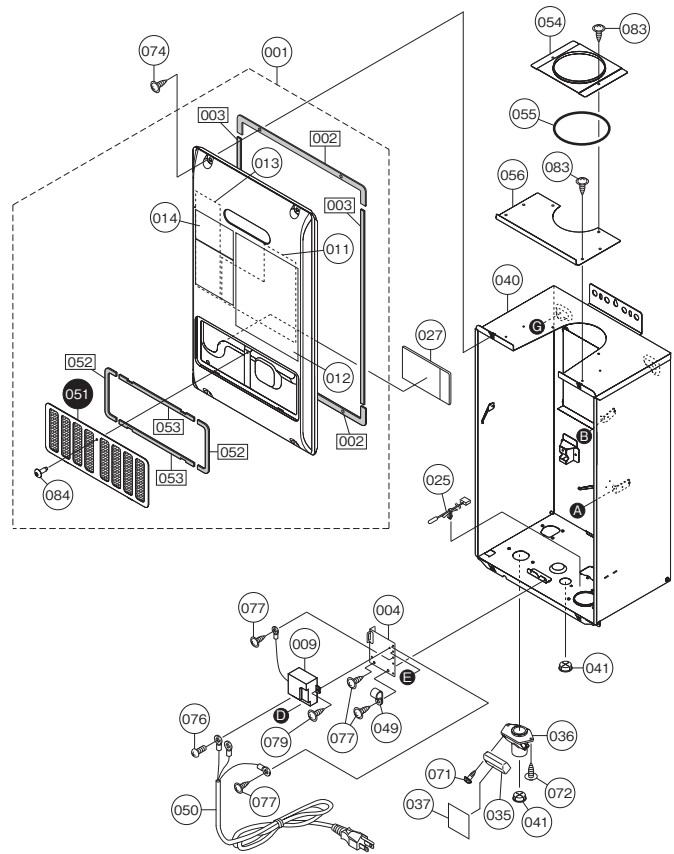


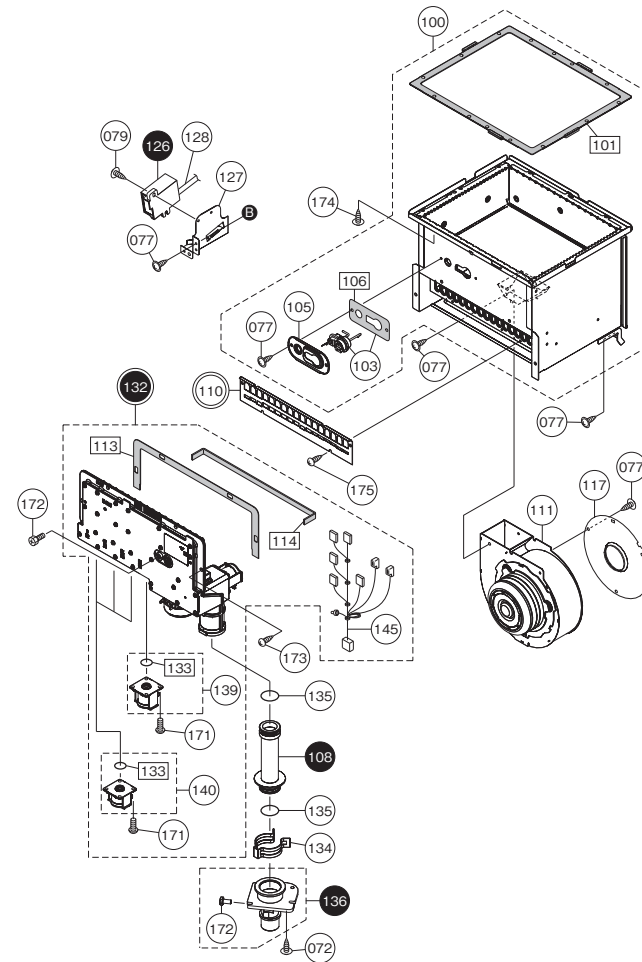
External outfitting NR98SV (GQ-2857WX-F US)



External outfitting NR98SV (GQ-2857WX-F US)

| Part Nos. | Part Names | Order Nos. | Q'ty/unit |
|-----------|---|------------|-----------|
| 001 | Front Cover - NR98SV(GQ-2857WX-F US) | SKJ71JP | 1 |
| 002 | Gasket - Front Cover Top and Bottom | EAL002 | 2 |
| 003 | Gasket - Front Cover Sides | AAPL017 | 2 |
| 004 | Mounting Plate - Terminal Block and/or GFCI | ESWA032 | 1 |
| 009 | Lightning Protection | ERD011 | 1 |
| 011 | Wiring Diagram | EYTK001 | 1 |
| 012 | Label - Outside Front Cover Caution Label | ELVK003 | 1 |
| 013 | Label - Inside Front Cover Caution Label | ESWK006 | 1 |
| 014 | Label - Name Plate | ESWK004 | 1 |
| 025 | Thermistor - Air | BWCH003 | 1 |
| 027 | Parts List/ Technical sheet | EYTK076 | 1 |
| 035 | Cover - External Remote Terminal Block | DNSA025 | 1 |
| 036 | External Remote Terminal Block | DNSA026 | 1 |
| 037 | Label - Remote Terminal Caution Label | ENJK002 | 1 |
| 040 | Case - NR98SV(GQ-2857WX-F US) | ESWA011 | 1 |
| 041 | Wire Grommet - Rubber | CXPA026 | 2 |
| 049 | Wire Clamp - Nylon | 7287909 | 1 |
| 050 | Power Supply Cord | ERD013 | 1 |
| 051 | Filter - Intake Air | DTGA015 | 1 |
| 052 | Gasket - Intake Air Filter Sides | DTGL012 | 2 |
| 053 | Gasket - Intake Air Filter Top and Bottom | DTGL013 | 2 |
| 054 | Cover - Around Flue | EDLA005 | 1 |
| 055 | Gasket - Exhaust Flue | EDLL002 | 1 |
| 056 | Cover - Top of Case | ELVA006 | 1 |
| 071 | Screw - Remote Terminal Cover M4X12 S410 | | |
| 072 | Screw - Long Machine M4X12 S410 | | |
| 074 | Screw - Front Cover with washer M4X12 S410 | | |
| 076 | Screw - GFCI M3.5X8 S430 | | |
| 077 | Screw - Short Tapping M4XB S410 | | |
| 079 | Screw - Long Tapping M4X12 S410 | | |
| 083 | Screw - Medium Tapping M4X10 S410 | | |
| 084 | Screw - Air Filter Screen | SAE6419 | 1 |

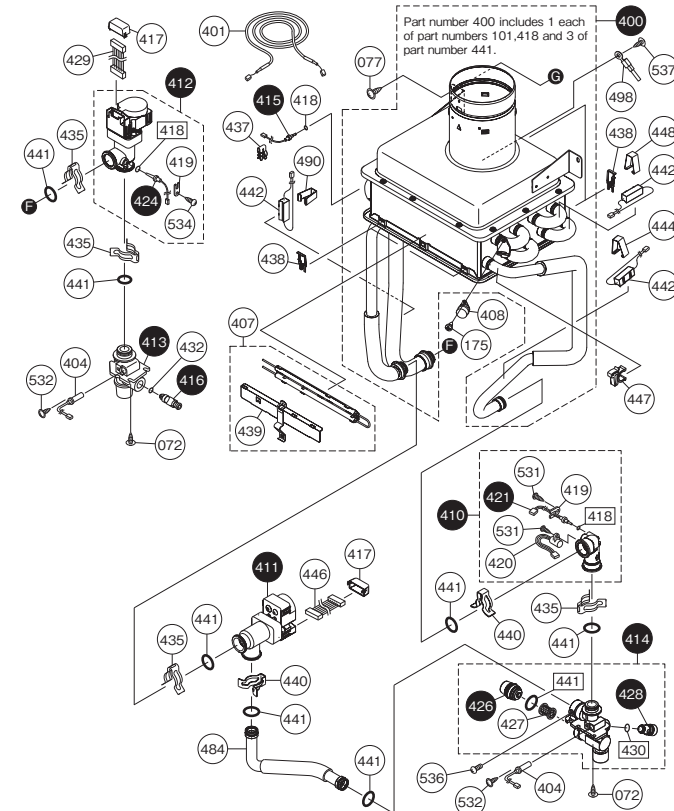
Combustion unit and gas route NR98SV (GQ-2857WX-F US)



Combustion unit and gas route NR98SV (GQ-2857WX-F US)

| Part Nos. | Part Names | Order Nos. | Q'ty/unit |
|-----------|--|------------|-----------|
| 100 | Burner w/ Gasket and Ignition Plug (SET) | SKH71B4 | 1 |
| 101 | Gasket - Burner | ESWL001 | 1 |
| 103 | Ignition Plug w/ Gasket | SKG7311 | 1 |
| 105 | Mounting Plate - Ignition Plug | ESWC011 | 1 |
| 106 | Gasket - Ignition Plug | EHL001 | 1 |
| 108 | Gas Pipe | ETPE011 | 1 |
| 110 | Burner Damper 17-13 | EFWC033 | 1<LP> |
| 111 | Burner Damper 17-14 | EFWC034 | 1<NG> |
| 111 | Fan Motor w/ Housing | SKC7683 | 1 |
| 113 | Gasket - Manifold Plate Top | ERDL007 | 1 |
| 114 | Gasket - Manifold Plate Bottom | ERDL009 | 1 |
| 117 | Fan Plate φ44 | CRUC045 | 1 |
| 126 | Igniter | ERD112 | 1 |
| 127 | Mounting Plate - Igniter | DTJA015 | 1 |
| 128 | High Voltage Igniter Wire | SAC1229 | 1 |
| 132 | Gas Valve w/ Manifold Plate 15 (SET) | SKH7203 | 1<LP> |
| 133 | Gas Valve w/ Manifold Plate 24 (SET) | SKH71B7 | 1<NG> |
| 133 | O-Ring - Gas Solenoid | SAAG044 | 5 |
| 134 | "C" Clamp - Gas Pipe 25.4 | 6340601 | 1 |
| 135 | O-Ring - Gas Pipe P25.5 | SAB1512 | 2 |
| 136 | Inlet Gas Connection w/ Screw (SET) | ELWE021 | 1 |
| 139 | Gas Manifold Solenoid 1 | SKG71B1 | 1 |
| 140 | Gas Manifold Solenoid 2 | SKG7316 | 3 |
| 145 | Wiring Harness - Gas Valve | ESWJ015 | 1 |
| 171 | Screw - Machine w/ guide M4X12 | | |
| 172 | Screw - Inlet and Manifold Gas M4XB | | |
| 173 | Screw - Large Manifold Plate M5X16 S410 | | |
| 174 | Screw - Medium Tapping M4X10 S410 | | |
| 175 | Screw - Small Tapping w/o collar M4XB S410 | SAC6082 | 2 |

Hot-water feed route NR98SV (GQ-2857WX-F US)

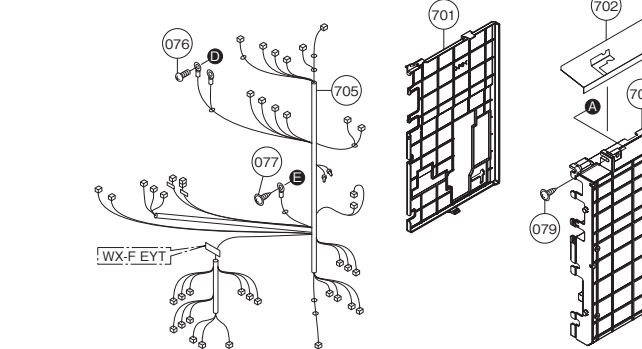


Hot-water feed route NR98SV (GQ-2857WX-F US)

| Part Nos. | Part Names | Order Nos. | Q'ty/unit |
|-----------|---|------------|-----------|
| 400 | Heat Exchanger Kit (SV) (SET) | SKJ71J8 | 1 |
| 401 | Thermal Fuse | SKH71B9 | 1 |
| 404 | Freeze Prevention Heater - Round Short | ERDH003 | 2 |
| 407 | Freeze Prevention Heater - Double Round (SET) | SKH71B2 | 1 |
| 408 | High Limit Switch | ELVK022 | 1 |
| 410 | Water Flow Sensor (SET) | ERD0011 | 1 |
| 411 | Water Servo - Bypass (SET) | ETFD010 | 1 |
| 412 | Water Servo -Main (SET) | ETFD011 | 1 |
| 413 | Outlet Water Connection | EHUD004 | 1 |
| 414 | Inlet Water Connection (SET) | EJMD002 | 1 |
| 415 | Thermistor - Hot Water | BWCD096 | 1 |
| 416 | Drain Cock | CRUD003 | 1 |
| 417 | Wire Cover - Servo | EBTD023 | 2 |
| 418 | O-Ring - Thermistor High Temp P4 | 1323709 | 3 |
| 419 | Thermistor Holding Plate | ALSD085 | 2 |
| 420 | Magnetic Sensor - Flow Sensor | BWCD090 | 1 |
| 421 | Thermistor - Cold Water | BWCD097 | 1 |
| 424 | Thermistor -Heat Exchanger | BWCD098 | 1 |
| 426 | Water Filter Cap | DTJD006 | 1 |
| 427 | Water Filter | EGBD032 | 1 |
| 428 | Safety Relief Valve | SAZ2811 | 1 |
| 429 | Wiring Harness - Main Water Servo | JBG024 | 1 |
| 430 | O-Ring - High Temp P9 | SAD6635 | 1 |
| 432 | O-Ring - High Temp P3 | SAD6633 | 1 |
| 435 | "C" Clamp - Water Pipe 16A | 6340300 | 4 |
| 437 | "C" Clamp - Thermistor | CRUD055 | 1 |
| 438 | Clamp - Thermal Fuse | EQLH002 | 4 |
| 439 | Clamp - Freeze Prevention | ERDH011 | 1 |
| 440 | "C" Clamp - Water Pipe 16-25 | SAD6593 | 2 |
| 441 | O-Ring - High Temp P16 | 3223302 | 8 |
| 442 | Freeze Prevention Heater -Rectangle | ERDH002 | 4 |
| 444 | Clamp -Freeze Prevention | AMML001 | 1 |
| 446 | Wiring Harness - Bypass Water Servo | ETF4033 | 1 |
| 447 | Clamp - Harness | SAB2775 | 1 |
| 448 | Clamp -Freeze Prevention | CPL002 | 2 |
| 484 | Pipe - Inlet to Bypass Servo | ESWD001 | 1 |
| 490 | Clamp - Freeze Prevention | ELVL011 | 1 |
| 498 | Thermistor -Scale Detection (SET) | SKJ71N1 | 1 |
| 531 | Screw - Round Head Medium Tapping M4X10 S305 | | |
| 532 | Screw - Short Machined M4XB S410 | | |
| 534 | Screw - Round Head Medium Tapping M4X10 S410 | | |
| 536 | Screw - Black Set M4XB S430 | | |
| 537 | Screw - Round Head Tapping 3x6 | | |

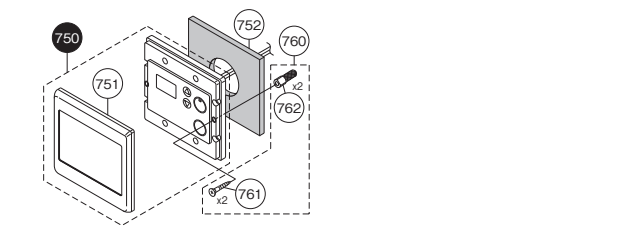
Electronic control unit, Remote controller and Attached set NR98SV (GQ-2857WX-F US)

Electronic control unit

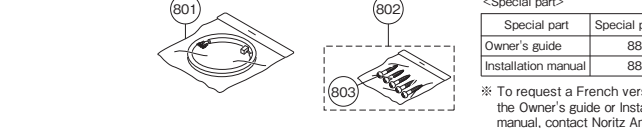


Remote controller

RC-7651M-ENG



Attached set



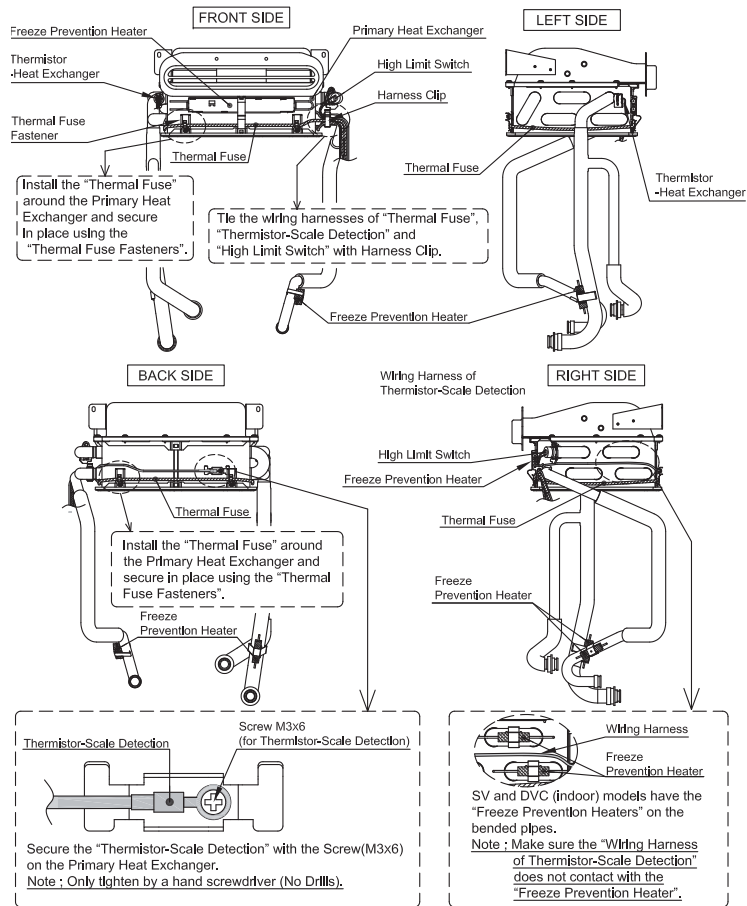
Electronic control unit, Remote controller and Attached set NR98SV (GQ-2857WX-F US)

| Part Nos. | Part Names | Order Nos. | Q'ty/unit |
|-----------|---|------------|-----------|
| 700 | Circuit Board | SKC70V4 | 1 |
| 701 | Cover - Circuit Board | ERD0008 | 1 |
| 702 | Cover - Circuit Board Water Resistant | ETHA023 | 1 |
| 705 | Wiring Harness - NR98SV(GQ-2857WX-F US) | EYTK031 | 1 |
| 750 | Remote Controller - RC-7651M (SET) | QXLU017 | 1 |
| 751 | Cover - Remote | QME4003 | 1 |
| 752 | Mounting Packing - Remote | QHUA115 | 1 |
| 760 | Screw Package - Remote(SET) | QQUA100 | 1 |
| 761 | Screw - Round Head Wood M4.1X25 S305 | | |
| 762 | Dry Wall Anchors6X25 | | |
| 800 | Box | SKH7200 | 1 |
| 801 | Remote Cord - 10 ft | ETHM001 | 1 |
| 802 | Wood Screw sets | SAF6007 | 1 |
| 803 | Screw - Round Head Wood 4.8X38 S305 | | |
| 888 | Owner's Guide | SBB80J3 | 1 |
| 889 | Installation Manual | SBB80U5 | 1 |

«Thermal Fuse Replacement Procedure»

Move the "Freeze Prevention Heaters", "High Limit Switch", "Thermistor-Scale Detection", "Thermistor-Heat Exchanger", "Thermal Fuse Fasteners", and "Harness Clip" from the old Primary Heat Exchanger to the new one.
(See 4 side view pictures below for location of each part.)

«Example ; OD(outdoor) model»



Procedure for Flushing the Heat Exchanger

This procedure is only intended for use by a qualified service professional or authorized Noritz Service Representative. Any unauthorized use of this procedure may result in voiding the warranty. Please contact Noritz America (866-766-7489) for additional support.

If the error code "C*#"-C*#" is flashing on the Remote Controller (or Operation Panel**), it means there is Scale Build-up in the Heat Exchanger. The Heat Exchanger needs to be flushed*** to remove the Scale Build-up.

Damage to the water heater due to Scale Build-up is not covered by the water heater's warranty. To clear the error code "C*#"-C*#", the Heat Exchanger must be flushed.

If the error code "C*#" is displayed and flashing on the Remote Controller (or Operation Panel**), please contact Noritz America (866-766-7489).

** * = 1, 2, 3, 4, F / # = 0, 1, 2, 3, 4, 5, 6, 7, 8, 9

** NR98DVC(GQ-2857WX-FFA US) and NR83DVC(GQ-2457WS-FFA US) only.

*** Connect the "blue connector for flushing" near the Circuit Board when flushing the Heat Exchanger.

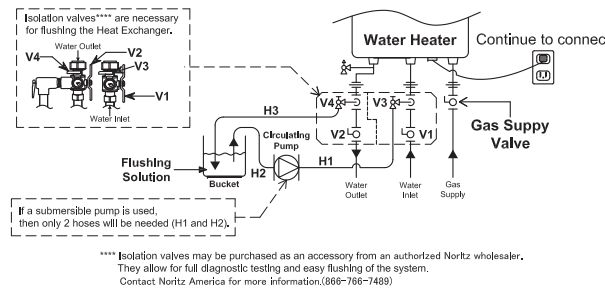
After connecting it, the water heater is set to "Flushing Mode".

The water heater must remain connected to electrical power when flushing the Heat Exchanger.

Basic Procedure

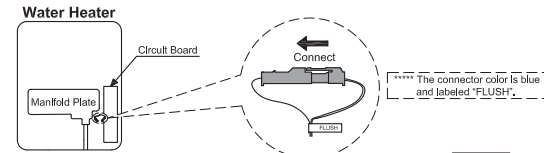
«Procedure 1. The preparation of the flushing system»

1. Close the gas supply valve.
2. Close the water inlet valve (V1) and the water outlet valve (V2).
3. Connect the one drain hose (H1) to the drain valve (V3), and then the other to the circulating pump.
4. Connect the drain hose (H2) to the circulating pump.
5. Connect the drain hose (H3) to the drain valve (V4).
6. Pour 1 gallon of "Calcium, Lime and Rust Removal Product" and 1 gallon water into the bucket. Noritz recommends "Calcium, Lime and Rust Removal Product" for flushing.
7. Place the both drain hoses (H2 and H3) into the bucket filled with the flushing solution.
8. Open the both drain valves (V3 and V4).



«Procedure 2. Flushing the Heat Exchanger»

1. Open the Front Cover.
2. Connect the "blue connector*****" for flushing" near the Circuit Board.

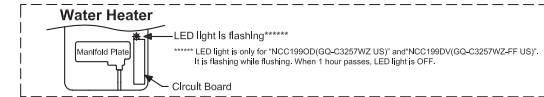


3. Then the code "CCC" is displayed on the Remote Controller.
4. Turn on the circulating pump to circulate the flushing solution through the water heater for 1 hour at a rate of 1.5 gallons per minute or more.
5. The code "C60" is displayed on the Remote Controller when the water heater detects the flow of the flushing solution.

When 1 minute passes, the code "C60" will change to "C59" on the Remote Controller.



Please check whether the reverse connection of the hose (H1) and (H3) If the display number will not change. In that case, the flow rate of the flushing solution may be under 1.5 gallons per minute.

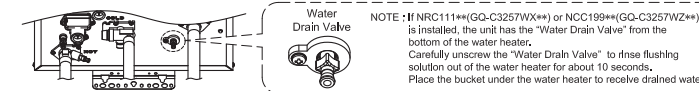


6. When 1 hour passes, the code "C00" is flashing on the Remote Controller. Do not disconnect the "blue connector for flushing".
7. Turn off the circulating pump.

«Procedure 3. Cleaning the Heat Exchanger»

The flushing solution needs to be rinsed and cleaned out of the water heater. Below is the way to rinse and clean the flushing solution.

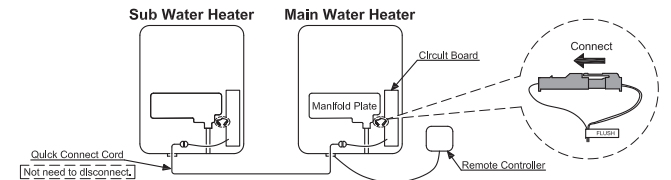
1. Remove both drain hoses (H2 and H3) from the bucket. And then place the drain hose (H3) into the sink or outside to drain.
2. Close the drain valve (V3) and then open the water inlet valve (V1). Do not open the fresh water outlet valve (V2).
3. Clean the water heater with fresh water for 3 minutes or more. (Needs to have enough time to clean the water heater.)



4. Close the drain valve (V4) and then remove the drain hose (H3) from the drain valve (V4).
5. Remove the drain hose (H1) from the drain valve (V3).
6. Disconnect the "blue connector for flushing" near the Circuit Board. The code "C00" goes out on the Remote Controller.
7. Close the Front Cover.
8. Open the gas supply valve and water outlet valve (V2).
9. Check for correct operation of the water heater.

In case of the "Quick Connect Multi System Procedure"

1. Connect the "blue connector for flushing" of need to be flushed. (The water heater is isolated from Quick Connect Multi system when the "blue connector for flushing" is connected. Not need to disconnect the Quick Connect Cord.)

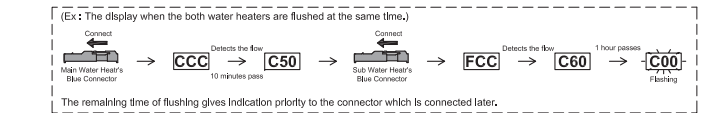


2. Then the code "CCC" or "FCC" is displayed on the Remote Controller.

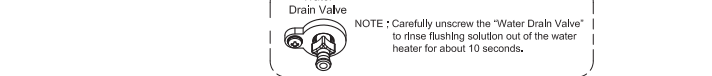
CCC is displayed when the Main Water Heater's blue connector is connected.

FCC is displayed when the Sub Water Heater's blue connector is connected.

2. Turn on the circulating pump to circulate the flushing solution through the water heater for 1 hour at a rate of 1.5 gallons per minute or more. (LED light is flashing while flushing the heat exchanger. See the "Procedure 2.5".)
3. When 1 hour passes, the code "C00" is flashing on the Remote Controller. Do not disconnect the "blue connector for flushing".



4. Turn off the circulation pump.
5. Rinse and clean the flushing solution out of the water heater in accordance with "Procedure 3". (See the "Procedure 3.1-3.5".)



6. Disconnect the "blue connector for flushing". The Code "C00" goes out on the Remote Controller.
7. Close the Front Cover.
8. Open the gas supply valve and water outlet valve.
9. Check for correct operation of the water heater.

See the Installation Manual in case of the "Multi System's Flushing Procedure".

Please contact Noritz America if more information is needed for flushing.
(Phone #: 866-766-7489)