



Penal-Ware® 1652FALRB Series
18" Lavatory with Rectangular Bowl - ADA 2010 Compliant - Front Access



1652FALRB-1-DMS-04-M

Fixture May Show Some Available Options

Please visit www.acorneng.com for most current specifications.

18" Lavatory with Rectangular Bowl - ADA 2010 Compliant - Front Access

Fixture is designed to be installed on a finished wall through a removable bottom secured with tamper-resistant screws. Features include an integral self-draining soap dish and mounting hardware. Wall anchors are by others. Optional Wall Sleeve is recommended to provide wall openings. Lavatory complies with ANSI, UFAS, CBC and ADA 2010 requirements for accessibility. Compliance is subject to the interpretation and requirements of the local code authority.

Cabinet is fabricated from 14 gage, type 304 stainless steel and is seamless welded construction with exposed surfaces polished to a satin finish. Cabinet interior is sound deadened with fire-resistant material.

Lavatory Rectangular Bowl is 14" x 12" x 4-1/2" deep and includes an integral fast drain. Standard P-trap waste outlet is 1-1/2" O.D. plain end and extends 3" beyond the rear of the fixture.

Optional Lavatory Valve is an pneumatically operated, pushbutton Air-Control valve using atmospheric air. Pushbutton is vandal-resistant and requires less than 5 pounds to activate valve. Valve is metering, non-hold open type. Valve timing is adjustable from 5 to 60 seconds. Valve includes a 0.5 GPM flow control and can be remotely located up to 10 feet from the operating pushbutton. Valve and Bubbler conforms with lead free requirements of NSF61, Section 9 and CHSC 116875.

Suffix Option -DMB, Deck Mounted Bubbler optionally available, provides a drinking bubbler that meets ADA requirements and lead free requirements of NSF61, Section 9 and CHSC 116875. This option also includes a separate pushbutton and non-metering Air-Control valve with .7 GPM flow control.

GUIDE SPECIFICATION

Provide and install an Acorn Penal-Ware, 18" wide ADA Compliant Lavatory with Rectangular Bowl, Front Access (specify model number and options). Unit shall conform with ANSI, UFAS, CBC and ADA 2010 requirements for accessibility. Fixture shall be fabricated from 14 gage, type 304 stainless steel. Construction shall be seamless welded and exposed surfaces shall have a satin finish. Provide Air-Control pneumatically operated, metering, non-hold open valve with ADA compliant pushbutton. Valve and Bubbler conform with lead free requirements of NSF61, Section 9 and CHSC 116875. Cabinet bottom shall be removable and secured with tamper-resistant screws. Cabinet interior shall be sound deadened with fire-resistant material. Fixture shall be furnished with necessary fasteners for proper installation.



Penal-Ware® 1652FALRB: 18" Lavatory with Lavy Rectangular Bowl - ADA Compliant - Front Access

WALL THICKNESS AND TYPE (Must Specify)

Thickness: _____ Type: Concrete Block Steel

MODEL AND OPTIONS SELECTION:

BASE MODEL NUMBER

1652FALRB 18" Lavy w/ Rectangular Bowl - ADA Compliant - Front Access

FIXTURE MOUNTING AND WASTE (Must Specify)

-1 Off-Floor, Wall Outlet

SPOUT SELECTION (Must Specify)

-DMB Deck Mounted Bubbler, Specify:
 -BP Penal Bubbler -BC Code Bubbler
 -DMS Deck Mounted Spout
 -BPH Hemispherical Penal Bubbler

VALVE SELECTION (Must Specify)

Air-Control (Pneumatic)

-03-M Single Temp, Metering
 -04-M Hot & Cold, Metering

Master-Trol® (Electronic)

-EVS1 Single Temp
 -EVS2 Hot & Cold
 -EVSP1 Single Temp, Piezo Button
 -EVSP2 Hot & Cold, Piezo Buttons

Master-Trol® PLUS (Electronic)

-MTP1 Single Temp
 -MTP2 Hot & Cold
 -MTPP1 Single Temp, Piezo Button
 -MTPP2 Hot & Cold, Piezo Buttons

-MTP VALVE OPTION

-PFB Power Failure Bypass (Provides drinking water in the event of power failure)

Time-Trol® (Electronic)

-MVC1 Single Temp
 -MVC1-BAT Single Temp Battery Powered (Batteries Not Included)
 -MVC2 Hot & Cold
 -MVC2-BAT Hot & Cold Battery Powered (Batteries Not Included)

Programmable (Electronic) w/9VDC Plug-In Transformer

-PPZ1 Single Temp Programmable Piezo Button
 -PPZ2 Hot & Cold Programmable Piezo Button

Valve By Others

-9 Punched for Valve by Others

DECK PUNCHING (1-5/16" Diameter)

-H1 Single Hole Centered
 -H24 Two Holes 4" Centerset
 -H28 Two Holes 8" Centerset (will eliminate soap depression)
 -H34 Three Holes 4" Centerset
 -H38 Three Holes 8" Centerset (will eliminate soap depression)

VALVE OPTIONS

-BRS Brass Body Valve
 -CI Cycle Interrupt for Time-Trol® Valves
 -PBH Hemispherical Pushbutton
 -TF Transformer, 120VAC to 24VAC (-MVC option only)

CABINET OPTIONS

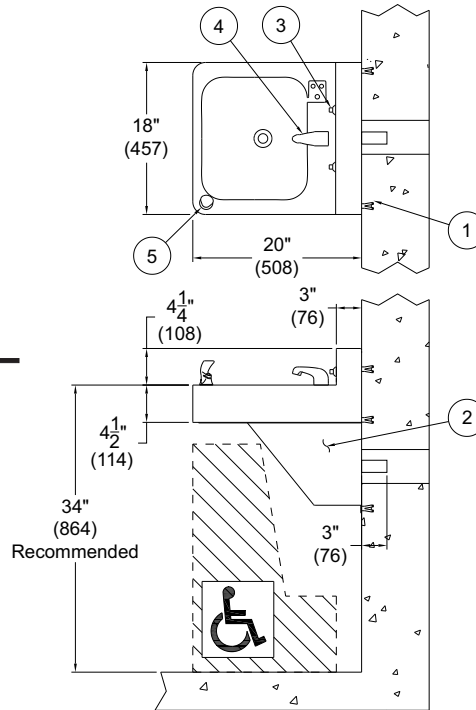
-FMT Fixture Mounted Trim
 -TB Toothbrush Holder Left Right
 -TG 12 Gage Cabinet
 -TH Towel Hook Single Double Left Right

LAVATORY WASTE OPTIONS

-LWE Lavy Waste Extension (3" Standard) Specify Length Beyond Fixture: _____
 -OF Lavatory Overflow

PRODUCT OPTIONS

-DMB Deck Mounted Drinking Bubbler (Cold water only) N/A with -03-M tempered supply
 -BP Penal Style -BC Code Style
 -BPH Penal Hemispherical Style
 -EG Enviro-Glaze, Specify Color: _____
 -MT Metal Template (Only 1 Required Per Project)
 -SW Wall Sleeve
 -VAC AcornVac System



1652FALRB-DMS-04-M-DMB-BC

Please visit www.acorneng.com for most current specifications.

WARNING: Cancer and Reproductive Harm - www.P65Warnings.ca.gov

<p>Important: Installation instructions and current rough-in are furnished with each fixture. Do not rough in without certified dimensions. Dimensions are subject to manufacturer's tolerance of plus or minus 1/4" and change without notice. Acorn assumes no responsibility for use of void or superseded data. © Copyright 2009 Acorn Engineering Company</p>	
<p>Selection Summary</p> <p>Model No. & Option _____</p> <p>Quantity _____</p>	<p>Approved for Manufacturing</p> <p>Company _____ Title _____</p> <p>Signature _____ Date _____</p>