



AFFINITY™ RESIDENTIAL PLASTIC TOILET SEAT

MODEL #

COLOR #

200E3

DESCRIPTION:

Closed front with cover, round, injection molded solid plastic toilet seat. Features two large, Super Grip Bumpers™, color-matched Whisper•Close® with Easy•Clean & Change® Precision Seat Fit™ Adjustable hinges and STA-TITE® Seat Fastening System™. Hinges adjust up to 1/2" forwards and backwards. This seat complies with IAPMO/ANSI Z124.5-2013 Plastic Toilet Seats as a class Residential.

SPECIFICATIONS:

| | |
|-------------------|--|
| Size: | Round |
| Material: | Plastic |
| Style: | Closed Front with Cover |
| Bumpers: | Two |
| Hinges: | Plastic Whisper•Close® with Easy•Clean & Change® Precision Seat Fit™ |
| Fastening System: | STA-TITE® Seat Fastening System™ |

FEATURES:

Precision Seat Fit™ Adjustable Hinges

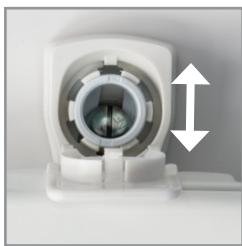
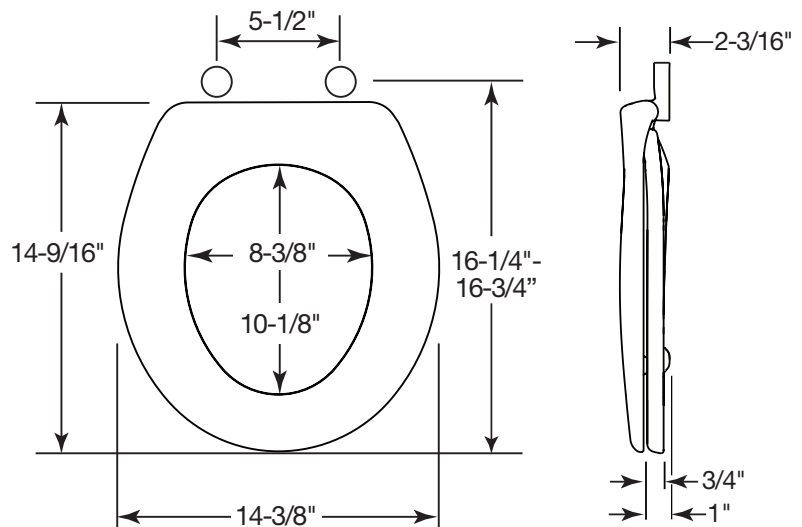
Whisper•Close®

Easy•Clean & Change®

STA-TITE® Seat Fastening System™

Super Grip Bumpers™

DIMENSIONS:



PRECISION SEAT FIT™
1/2" ADJUSTABLE HINGES



WHISPER•CLOSE®
FEATURE



EASY REMOVAL OF SEAT
FOR THOROUGH CLEANING



STA-TITE® SEAT
FASTENING SYSTEM™



SUPER GRIP BUMPERSTM



Bemis Manufacturing Co., Sheboygan Falls, WI 53085
www.BemisSeats.com

Phone: 800-558-7651 Fax: 800-292-3647
©2016 0B7012374