

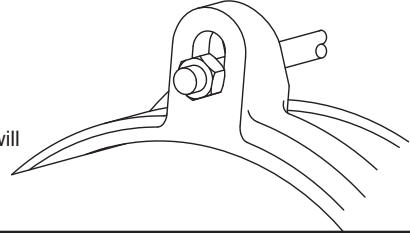
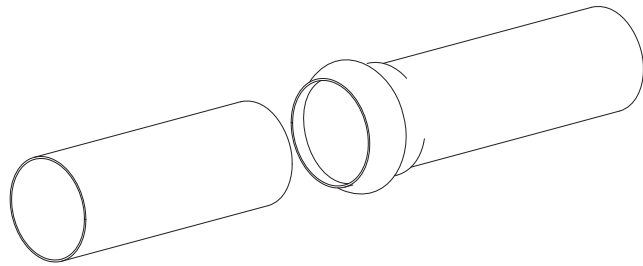
# ASSEMBLY INSTRUCTIONS

## for 4" - 12" SERIES 1355-x-DWB (ALSO 1369-10-C & 1369-12-C)

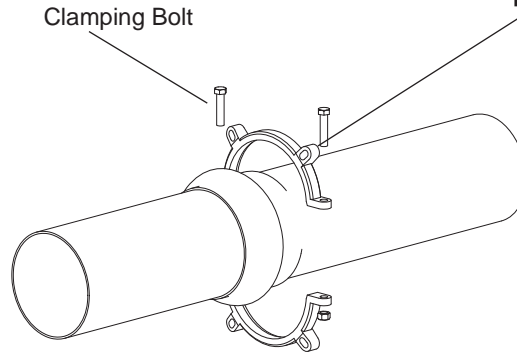
Standard restraint device for new or existing installations of Ductile Iron Pipe, C900 PVC Pipe Bell Joints, or C907 Pipe Fittings

**IMPORTANT**

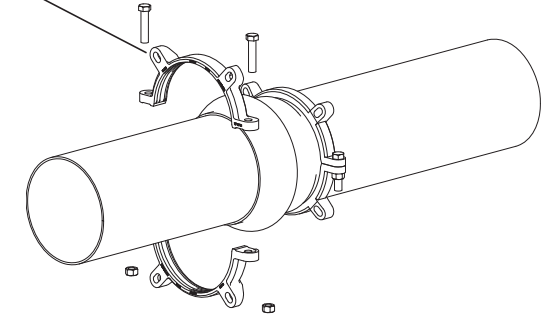
**Note:** Position the restraint and back-up ring so the nuts for the connecting rod contact the flat side of the ears. The restraint will not function properly if installed incorrectly.

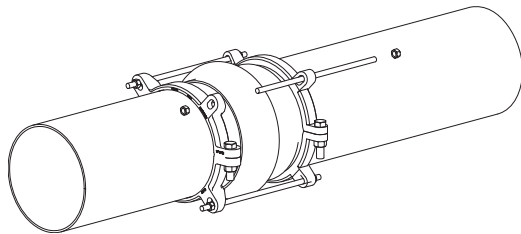
1. Assemble spigot pipe end to bell using standard procedure, following pipe manufacturer's recommendations.



2. Assemble split (non-serrated) back-up ring onto the pipe behind the pipe bell. Make sure beveled side of ring faces the pipe bell and is snug against the bell transition. Evenly tighten the clamping bolts to the recommended torque as shown in Table 1. A torque wrench is highly recommended and required to ensure proper torque. The restraint clamping pads will not touch when installed on ductile iron pipe.



3. Assemble Series 1300-x-DWB or 1309 serrated clamping ring onto spigot end of the pipe using the connecting rods as a guide for position. Evenly tighten clamping bolts to the recommended torque as shown in Table 1. A torque wrench is highly recommended and required to ensure proper torque. The restraint clamping pads will not touch when installed on ductile iron pipe.



4. Insert all supplied connecting rods into the slots and position as close to the pipe as possible. Snug connecting nuts hand tight. Using a wrench, tighten each connecting nut an additional 1/2 turn in order to firmly seat the back up ring against the bell. **Do not over-tighten the connecting nuts.**

Table 1

Recommended Clamping Bolt Torque		
	PVC	DIP
4" and 6"	100 ft-lb	100 ft-lb
8" and 10"	150 ft-lb	150 ft-lb
12"	150 ft-lb	200 ft-lb



**The Ford Meter Box Co., Inc.** 775 Manchester Avenue, P.O. Box 443, Wabash, Indiana, USA 46992-0443  
 Telephone: 260-563-3171 FAX: 800-826-3487 Overseas FAX: 260-563-0167 <http://www.fordmeterbox.com>

