
HDPE Fittings



ATLANTIC
IRRIGATION





MOLDED IPS BUTT FUSION FITTINGS

DR11



Tee

Part Number	Size
66-31100202	2" x 2"
66-31100303	3" x 3"
66-31100404	4" x 4"
66-31100606	6" x 6"
66-31100808	8" x 8"
66-31101010	10" x 10"



90° Bend

Part Number	Size
66-311902	2"
66-311903	3"
66-311904	4"
66-311906	6"
66-311908	8"
66-311910	10"



Reducer

Part Number	Size
66-311502E	2" x 1-1/2"
66-31150302	3" x 2"
66-31150402	4" x 2"
66-31150403	4" x 3"
66-31150603	6" x 3"
66-31150604	6" x 4"
66-31150804	8" x 4"
66-31150806	8" x 6"
66-31151008	10" x 8"



Cap

Part Number	Size
66-314902	2"
66-314903	3"
66-314904	4"
66-314906	6"
66-314908	8"
66-314910	10"



45° Bend

Part Number	Size
66-312202	2"
66-312203	3"
66-312204	4"
66-312206	6"
66-312208	8"
66-312210	10"

MOLDED IPS BUTT FUSION FITTINGS

DR11x DR13.5



Tee

Part Number	Size
66-32100202	2" x 2"
66-32100303	3" x 3"
66-32100404	4" x 4"
66-32100606	6" x 6"
66-32100808	8" x 8"
66-32101010	10" x 10"



90° Bend

Part Number	Size
66-321902	2"
66-321903	3"
66-321904	4"
66-321906	6"
66-321908	8"
66-321910	10"



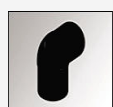
Reducer

Part Number	Size
66-3261502E	2" x 1-1/2"
66-32150302	3" x 2"
66-32150402	4" x 2"
66-32150403	4" x 3"
66-32150603	6" x 3"
66-32150604	6" x 4"
66-32150804	8" x 4"
66-32150806	8" x 6"
66-32151008	10" x 8"



Cap

Part Number	Size
66-324902	2"
66-324903	3"
66-324904	4"
66-324906	6"
66-324908	8"
66-324910	10"



45° Bend

Part Number	Size
66-322202	2"
66-322203	3"
66-322204	4"
66-322206	6"
66-322208	8"
66-322210	10"



IPS TRANSITION FITTINGS ADAPTERS & STIFFENERS

DR11



**316 Stainless Steel
Transition Fitting**
(MNPT x BUTT Fusion)

Part Number	Size
65-3132E	1½"
65-313202	2"
65-313203	3"
65-313204	4"



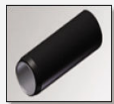
**304 Stainless Steel
Transition Fitting**
(MNPT x BUTT Fusion)

Part Number	Size
65-3133E	1½"
65-313302	2"
65-313303	3"
65-313304	4"



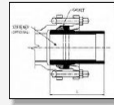
**Brass Transition
Fitting**
(MNPT x BUTT Fusion)

Part Number	Size
65-3135C	1"
65-3135D	1-1/4"
65-3135E	1-1/2"
65-313502	2"



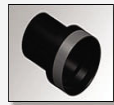
**MJ Adapter
w/ Stiffener**
(For Mechanical Joint)

Part Number	Size
65-314203	3"
65-314204	4"
65-314206	6"
65-314208	8"
65-314210	10"



**MJ Adapter
Accessories**
(For Mechanical Joint Valves)

Part Number	Size
65-904403	3" (4 Bolts) includes gland t-bolt & nut and transition gasket
65-904404	4" (4 Bolts) includes gland t-bolt & nut and transition gasket
65-904406	6" (6 Bolts) includes gland t-bolt & nut and transition gasket
65-904408	8" (6 Bolts) includes gland t-bolt & nut and transition gasket
65-904410	10" (8 Bolts) includes gland t-bolt & nut and transition gasket



**MJ Bell X HDPE Butt
Fusion Adapter**
(Includes Accessories)

Part Number	Size
65-314303	3"
65-314304	4"
65-314306	6"
65-314308	8"
65-314310	10"



**Wedge Style Restraint
for IPS PVC Pipe**
(Includes MJ Transition Gasket)

Part Number	Size
65-904503	3"
65-904504	4"
65-904506	6"
65-904508	8"
65-904510	10"



**Ductile Iron
Backup Ring**
(for use with Flange Valves)

Part Number	Size
65-077702	2" DR11
65-077703	3" DR11
65-077704	4" DR11
65-077706	6" DR11
65-077708	8" DR11
65-077710	10" DR11



IPS Flange Adapter

Part Number	Size
65-316002	2"
65-316003	3"
65-316004	4"
65-316006	6"
65-316008	8"
65-316010	10"



IPS Flange Adapter

DR11 X DR13.5	
Part Number	Size
65-326002	2"
65-326003	3"
65-326004	4"
65-326006	6"
65-326008	8"
65-326010	10"



Flange Accessory Kit
(For HDPE Flange x HDPE Flange)

Part Number	Size
65-077002	2" (DR11) includes Grade 5 Zinc Coated Bolts & Nuts 1/8" Neoprene Gaskets
65-077003	3" (DR11) includes Grade 5 Zinc Coated Bolts & Nuts 1/8" Neoprene Gaskets
65-077004	4" (DR11) includes Grade 5 Zinc Coated Bolts & Nuts 1/8" Neoprene Gaskets
65-077006	6" (DR11) includes Grade 5 Zinc Coated Bolts & Nuts 1/8" Neoprene Gaskets
65-077008	8" (DR11) includes Grade 5 Zinc Coated Bolts & Nuts 1/8" Neoprene Gaskets
65-077010	Zinc Coated Bolts & Nuts 1/8" Neoprene Gaskets



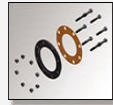
IPS TRANSITION FITTINGS ADAPTERS & STIFFENERS

DR11



Flange Accessory Kit
(For HDPE Flange x HARCO Flange)

Part Number	Size
65-077103	3" (DR11) includes Grade 5 Zinc Coated Bolts & Nuts 1/8" Neoprene Gaskets
65-077104	4" (DR11) includes Grade 5 Zinc Coated Bolts & Nuts 1/8" Neoprene Gaskets
65-077106	6" (DR11) includes Grade 5 Zinc Coated Bolts & Nuts 1/8" Neoprene Gaskets
65-077108	8" (DR11) includes Grade 5 Zinc Coated Bolts & Nuts 1/8" Neoprene Gaskets
65-077110	Zinc Coated Bolts & Nuts 1/8" Neoprene Gaskets



Flange Accessory Kit
(For HDPE Flange x Iron/Steel Flange)

Part Number	Size
65-077202	2" (DR11) includes Grade 5 Zinc Coated Bolts & Nuts 1/8" Neoprene Gaskets
65-077203	3" (DR11) includes Grade 5 Zinc Coated Bolts & Nuts 1/8" Neoprene Gaskets
65-077204	4" (DR11) includes Grade 5 Zinc Coated Bolts & Nuts 1/8" Neoprene Gaskets
65-077206	6" (DR11) includes Grade 5 Zinc Coated Bolts & Nuts 1/8" Neoprene Gaskets
65-077208	8" (DR11) includes Grade 5 Zinc Coated Bolts & Nuts 1/8" Neoprene Gaskets
65-077210	Zinc Coated Bolts & Nuts 1/8" Neoprene Gaskets



Stiffener
(For use with Harco Ductile Iron Fittings and Valves)

Part Number	Size
65-090481102	2" DR11
65-90481302	2" DR13.5
65-90481103	3" DR11
65-90481303	3" DR13.5
65-90481104	4" DR11
65-90481304	4" DR13.5



IPS Transition
(Butt Fusion x Spigot with Stiffener)

Part Number	Size
65-31340214	2" x 14" DR11
65-35340214	2" x 14" DR13.5
65-31340314	3" x 14" DR11
65-35340314	3" x 14" DR13.5

IPS MOLDED ELECTROFUSION FITTINGS



Coupling
(230 psi)

Part Number	Size
70-0902	2"
70-0903	3"
70-0904	4"
70-0906	6"
70-0908	8"
70-0910	10"



Coupling
(160 psi)

Part Number	Size
70-350908	8"
70-350910	10"



Tee
(230 psi)

Part Number	Size
70-100202	2"



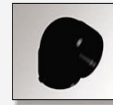
Reducer
(230 psi)

Part Number	Size
70-150302	3" x 2"



Coupling Cap
(230 psi)

Part Number	Size
70-4902	2"
70-4903	3"



90° Bend
(230 psi)

Part Number	Size
70-1902	2"
70-1903	3"



45° Bend
(230 psi)

Part Number	Size
70-2202	2"



IPS MOLDED ELECTROFUSION FITTINGS con't



Swivel Saddle
EF x Swivel
(Nupi Based)

Part Number	Size
70-5303	3"
70-5304	4"
70-5306	6"
70-5308	8"
70-5310	10"



Service Saddle
EF x FNPT
(Nupi Based)

Part Number	Size
70-540304	3" x 1"
70-540306	3" x 1-1/2"
70-540308	3" x 2"
70-540404	4" x 1"
70-540406	4" x 1-1/2"
70-540408	4" x 2"
70540604	6" x 1"
70-540606	6" x 1-1/2"
70-540608	6" x 2"
70-540804	8" x 1"
70-540806	8" x 1-1/2"
70-540808	8" x 2"
70-541004	10" x 1"
70-541006	10" x 1 1/2"
70-541008	10" x 2"



Branch Saddle
EF x Butt Fusion
(Nupi Based)

Part Number	Size
70-560202	2" x 2"
70-560302	3" x 2"
70-560402	4" x 2"
70-560403	4" x 3"
70-560602	6" x 2"
70-560603	6" x 3"
70-560802	8" x 2"
70-560803	8" x 3"
70-560604	6" x 4"
70-560804	8" x 4"
70-560806	8" x 6"
70-561002	10" x 2"
70-561003	10" x 3"
70-561004	10" x 4"
70-561006	10" x 6"



IPS x Female Acme
Service Fittings

Part Number	Size
70-610206	2"x1 1/2"
70-610306	3"x1 1/2"
70-610406	4"x1 1/2"

IPS VALVES FOR HDPE APPLICATIONS

DR11



Wrench Operated Full Bore Ball Valve
(Treated Water)

Part Number	Size
74-5102	2"
74-5103	3"
74-5104	4"
74-5106	6"
74-5108	8"



Wrench Operated Full Bore Ball Valve
(Natural Water)

Part Number	Size
74-5402	2"
74-5403	3"



Ductile Iron Resilient Wedge Gate Valve
w/PE Ends

Part Number	Size
74-315502	2"
74-315503	3"
74-315504	4"
74-315506	6"
74-315508	8"
74-315510	10"

IPS VALVES FOR HDPE APPLICATIONS

DR11 x DR13.5



Wrench Operated Full Bore Ball Valve
(Treated Water)

Part Number	Size
74-325102	2"
74-325103	3"
74-325104	4"
74-325106	6"
74-325108	8"



Wrench Operated Full Bore Ball Valve
(Natural Water)

Part Number	Size
74-325402	2"
74-325403	3"



Ductile Iron Resilient Wedge Gate Valve
w/PE Ends

Part Number	Size
74-325502	2"
74-325503	3"
74-325504	4"
74-325506	6"
74-325508	8"
74-325510	10"



LATERAL ISOLATION VALVES



Gasket x MSWL
(Cross Handle with
No Side Outlet)

Part Number	Size
841106L	2" x 6"
841112L	2" x 12"



Gasket x MSWL
(Cross Handle with
1" Side Outlet - Plugged)

Part Number	Size
8411062PL	2" x 6"
8411122PL	2" x 12"
8412062PL	2.5" x 6"



Gasket x MSWL
(Square Nut with
No Side Outlet)

Part Number	Size
841106N	2" x 6"
841112N	2" x 12"



Gasket x Gasket
(Cross Handle with
No Side Outlet)

Part Number	Size
8411GGL	2"



Gasket x Gasket
(Cross Handle with
1" Side Outlet - Plugged)

Part Number	Size
8411GG2PL	2"



Gasket x MSWL
(Square Nut with
1" Side Outlet - Plugged)

Part Number	Size
8411062PN	2" x 6"
8411122PN	2" x 12"
8412062PN	2.5" x 6"
8413062PN	"3" x 6
8414062PN	4" x 6"



Gasket x Gasket
(Square Nut with
No Side Outlet)

Part Number	Size
8411GGN	2"



Gasket x Gasket
(Square Nut with
1" Side Outlet Plugged)

Part Number	Size
8411GG2PN	2"

PHILMAC 3G FITTINGS



Coupling with Stop
Compression x
Compression

Part Number	Size
75-30866	1½"
75-30888	2"



Repair Coupling (no stop)
Compression x
Compression

Part Number	Size
75-30966	1½"
75-30988	2"



Reducer Coupling
Compression x
Compression

Part Number	Size
75-31765	1½" x 1¼"
75-31784	2" x 1"
75-31785	2" x 1¼"
75-31786	2" x 1½"



Male Adapter
Compression x MIPT

Part Number	Size
75-33066	1½"
75-33088	2"



Female Adapter
Compression x FIPT

Part Number	Size
75-33266	1½"
75-33288	2"



90° Elbow
Compression x
Compression

Part Number	Size
75-31866	1½"
75-31888	2"



90° Elbow
Compression x FIPT

Part Number	Size
75-32088	2"



Tee
Compression x
Compression

Part Number	Size
75-312666	1½" x 1½"
75-312888	2" x 2"



Reducing Tee
Compression x
Compression

Part Number	Size
75-33066	1½"
75-33088	2"



PHILMAC 3G FITTINGS con't



Reducing Tee
Compression x
Compression

Part Number	Size
75-313886	2" x 1½"



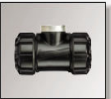
Service Tee
Compression x Compression x
FIPT

Part Number	Size
75-351666	1½" x 1½"
75-351888	2" x 2"



End Cap
Compression

Part Number	Size
75-3496	1½"
75-3498	2"



ACME Service Tee
Compression x
Compression x ACME

Part Number	Size
75-353886	2" x 1½"



ACME Service Ell
Compression x ACME

Part Number	Size
75-32386	2" x 1½"



ACME Service Adapter
Compression x ACME

Part Number	Size
75-33386	2" x 1½"