



# model 6700R

Mounting Plate

## FEATURES & BENEFITS

### MOUNTING

3/16" (.47 cm) steel pre-drilled and threaded mounting plate along with all-thread studs

### OPTIONS

For more information, visit [www.hawesco.com](http://www.hawesco.com) or call (888) 640-4297.



## SPECIFICATIONS

On-wall mounting plate, Model 6700R, designed for retrofit installations, provides additional support and facilitates the installation of the 1920 series bottle filler to a wall. Plate is to be mounted on the surface of a finished wall and is concealed behind optional back panel. Steel construction provides a solid support system for Haws 1920, 1920HPS & 1920FR. Measurements are 14" W x 7" H x 3/16" (35.6 x 17.8 x .47 cm).

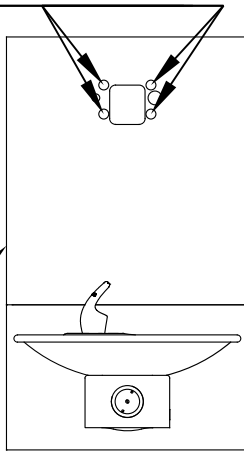
## APPLICATIONS

### STEP 1

PLACE BACKPLATE ON TOP OF INSTALLED DRINKING FOUNTAIN. MARK THE HOLE LOCATIONS ONTO THE WALL.

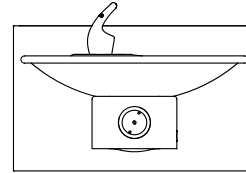
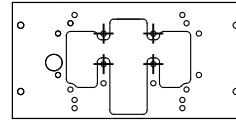
BP15 SHOWN

MARK THESE HOLE LOCATIONS



### STEP 2

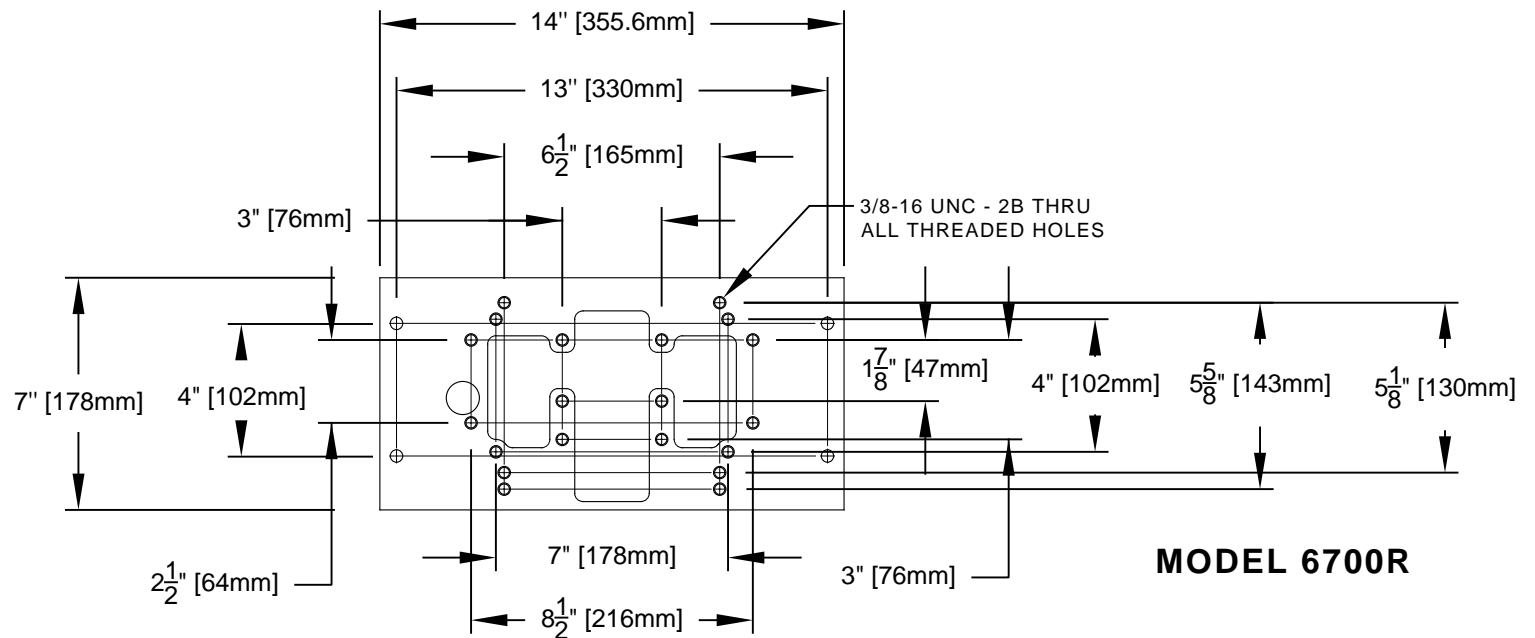
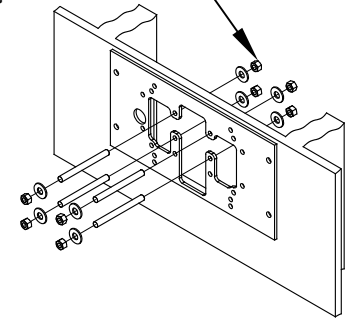
LINE UP THE 6700R MOUNTING PLATE OVER THE MARKED HOLES. ATTACHED THE PLATE TO THE WALL USING APPROPRIATE ANCHORS.



### STEP 3


INSTALL THE STUDS IN THE MOUNTING PLATE BY SECURING WITH NUTS AND WASHERS. RECESS FOR THE REAR NUTS MAY BE REQUIRED.

FULLY TIGHTEN NUTS TO SECURE STUDS IN PLACE.



### NOTES:

1. WHEN INSTALLING THIS UNIT, LOCAL, STATE OR FEDERAL CODES SHOULD BE ADHERED TO.
2. FOR CONCRETE/MASONRY WALLS, DO NOT INSTALL THE MOUNTING PLATE ON THE SAME SIDE OF WALL AS FOUNTAIN/BOTTLE FILLER. CALL TECHNICAL SUPPORT IF THERE ARE ANY QUESTIONS AS TO HOW TO OBTAIN A PROPER ANCHOR IN CONCRETE/MASONRY WALL. 1-800-766-5612

		<b>Haws®</b>		1455 KLEPPE LANE SPARKS, NEVADA 89431 (775) 359-4712 FAX (775) 359-7424 E-MAIL: HAWS@HAWS.CO.COM WEBSITE: WWW.HAWS.CO.COM	
ECN NO. 5081	REVISED PER ECN: 5172	BY: MJ	MODEL(S) MODEL 6700R INSTALLATION		PART NUMBER 0510000492.D
DRAWN: MJ	DATE: 06/27/16	CHK'D: FV			REVISION 2
APPROVED: FV	DATE: 02/27/17	SCALE: 1:1	DRAWING TYPE: INSTALLATION	SIZE: A	SHEET 1 OF 1