
INSERTA TEE FITTINGS ® INSTALLATION PROCEDURES



STEP 1

Make sure bit is perpendicular to mainline. Core the proper size hole. Feel inside hole and clear any remaining material.



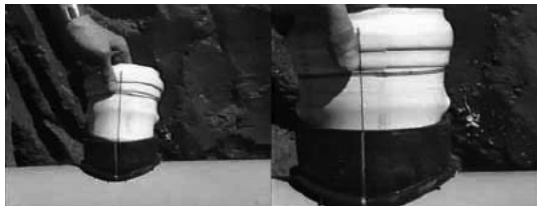
STEP 2

Insert the rubber sleeve into the cored hole with the **GOLD VERTICAL LINE ON THE SLEEVE** facing to the side of the mainline. The upper segment should be on top of the wall or rib and the lower segment (PVC Ribbed & Polyethylene pipe only) should be on the inside of the pipe. Feel inside to be sure lower segment is flat against inside wall.



STEP 3

Apply the Inserta Tee solution supplied, to the inside of the rubber sleeve and to the outside of the PVC hub adapter's spigot. **WARNING:** Using pipe lube may result in hub adapter popping out.



STEP 4

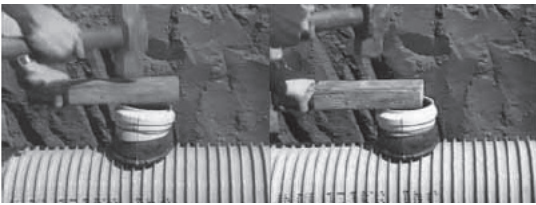
Place the PVC hub adapter into the rubber sleeve, Make sure that the **RED VERTICAL LINE ON THE PVC HUB ADAPTER IS IN LINE WITH THE GOLD VERTICAL LINE ON THE RUBBER SLEEVE**. Push hub adapter in as far as possible by hand. Make sure hub adapter is perpendicular to mainline. Forcing hub adapter through at an angle may cause damage to the rubber sleeve or hub adapter.

INSERTA TEE FITTINGS ® INSTALLATION PROCEDURE



STEP 5

Place the 2x4 board onto the top of the PVC hub adapter



STEP 6

The RED HORIZONTAL LINE AT THE TOP OF THE HUB ADAPTER

is a depth mark. This tells the installer just how far to drive the adapter into the rubber sleeve. Using the board and hammer drive the PVC hub adapter into the rubber sleeve to where the HORIZONTAL RED LINE ON THE PVC HUB ADAPTER MEETS THE TOP OF THE RUBBER SLEEVE.



STEP 7

Place the stainless steel band around the top of the rubber sleeve and tighten down.



STEP 8

Install side service pipe in normal manner.



12487-82nd Avenue, Surrey B.C. V3W 3E8

T: 604-531-8408 / 1- 877-531-8478

F: 604-531-8468 / 1- 877-531-8468

info@pro-linefittings.com