

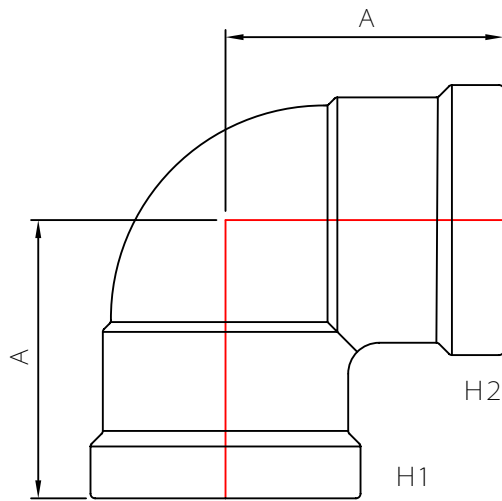


MULTI FITTINGS

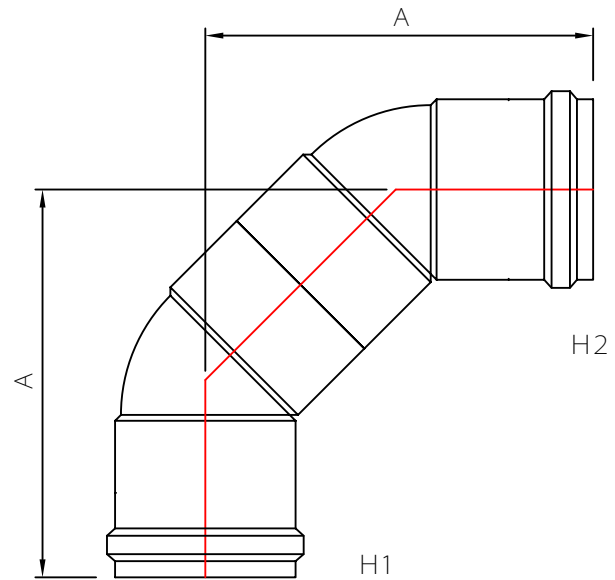
LAYING LENGTH

ISSUE DATE: 2017 11 30
SUPERCEDES: 2005 08 05

90 ° ELBOW (BxB)



INJECTION MOLDED FITTING(M)



FABRICATED FITTING(F)

	SIZE H1xH2	PART NUMBER	A REF
M=	4x4	274013	7.000
M=	6x6	274014	9.000
M=	8x8	274015	10.875
F@	10x10	532572	22.375
F@	12x12	532574	-

Note: = Refer to Page C9S4 for Hub Detail
@ Refer to Page C9S5 for Hub Detail