

NOW FEATURING MOLDED CIOD FITTINGS



MULTI FITTINGS DR18 CIOD NON-PRESSURE SEWER FITTINGS

- Molded White in 4" - 8" sizes
- Fabricated (green or blue) in larger diameters

APPLICATIONS

- Gravity sewer drainage applications
- Non-pressure applications
- Seismic applications
- Under roadbeds and higher road load applications
- Transitions from CIOD to sewer

FEATURES & BENEFITS

- White in color molded
- Molded in 4"-8" configurations
- Long-term reliability
- Easy to install
- High impact strength
- Corrosion resistant

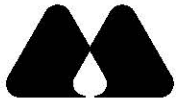
SIZES

Molded: 4" - 8"
Fabricated: 4" - 12"

MULTI FITTINGS

Telephone: 519 681-2140
Toll Free: 800 265-1815
Fax: 519 681-2156



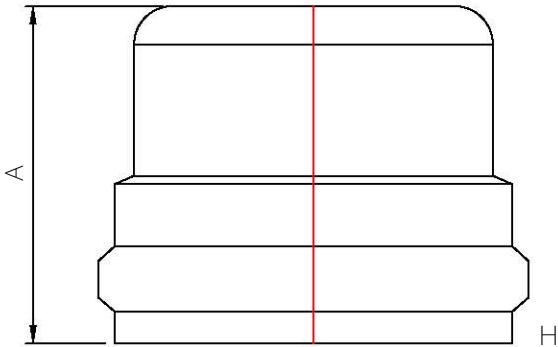


MULTI FITTINGS

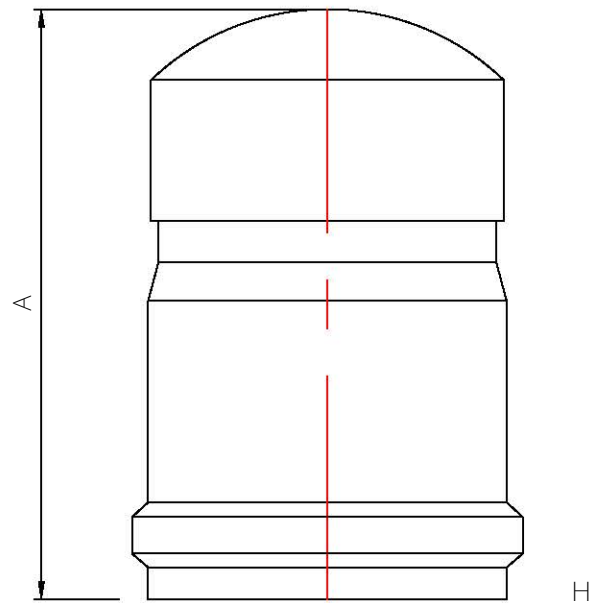
LAYING LENGTH

ISSUE DATE: 2017 11 30
SUPERCEDES: 2005 08 05

CAP (B)



INJECTION MOLDED FITTING (M)



FABRICATED FITTING (F)

	SIZE H	PART NUMBER	A REF
M+	4	274046	5.500
M+	6	274047	5.625
F@	8	532783	-
F@	10	532784	-
F@	12	532785	-

Note: + Refer to Page C9S4 -1 for Hub Detail
@ Refer to Page C9S5 for Hub Detail