

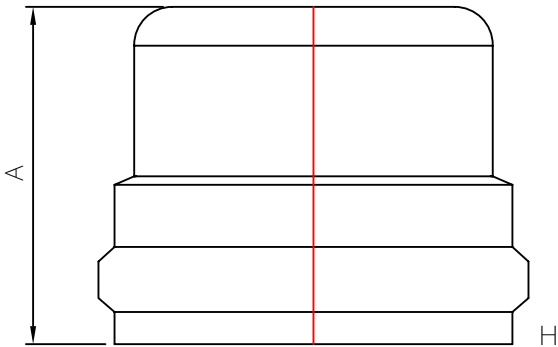


MULTI FITTINGS

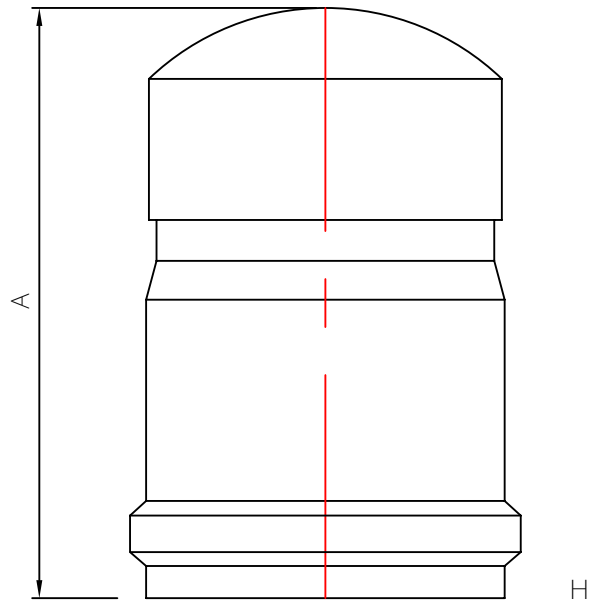
# LAYING LENGTH

ISSUE DATE: 2017 11 30  
SUPERCEDES: 2005 08 05

## CAP (B)



INJECTION MOLDED FITTING (M)



FABRICATED FITTING (F)

	SIZE H	PART NUMBER	A REF
M+	4	274046	5.500
M+	6	274047	5.625
F@	8	532783	-
F@	10	532784	-
F@	12	532785	-

Note: + Refer to Page C9S4 -1 for Hub Detail  
@ Refer to Page C9S5 for Hub Detail