

## PRODUCT SPECIFICATIONS

Elkay Single Hole with Concealed Deck Laminar Flow Faucet with 5" Gooseneck Spout 6" Wristblade Handles Chrome. Faucet has a flow rate of 1.5 GPM, and is made of Chrome Plated Brass material, with a Quarter Turn Ceramic Disc valve. Faucet requires 1 faucet holes.

|                          |   |
|--------------------------|---|
| <b>Mounting Type:</b>    | Deck Mount                                      |
| <b>Special Features:</b> | Low Flow<br>Solid Brass Construction            |
| <b>Finish:</b>           | Chrome (CR)                                     |
| <b>Handle Type:</b>      | 6" Wristblade Handle                            |
| <b>Deck Clearance:</b>   | 10"   |
| <b>Spout Reach:</b>      | 5"  |
| <b>Spout Height:</b>     | 13-5/16"  |
| <b>Hole Drillings:</b>   | 1   |
| <b>Material:</b>         | Chrome Plated Brass                             |
| <b>Valve Type:</b>       | Quarter Turn Ceramic Disc                       |
| <b>Valve Connection:</b> | 1 1/8" Unified Screw Thread,<br>Standard Series |
| <b>Flow Rate:</b>        | 1.5 GPM   |
| <b>Spout Type:</b>       | Gooseneck                                       |

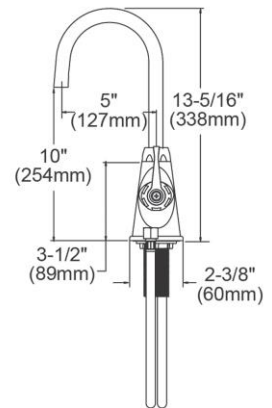
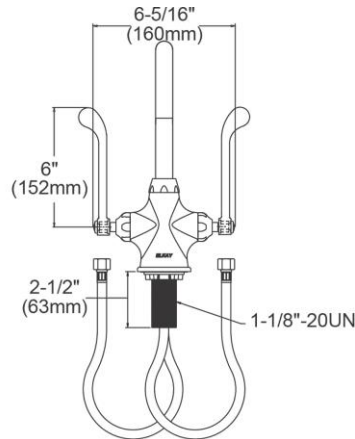


AMERICAN PRIDE. A LIFETIME TRADITION.  
Like your family, the Elkay family has values and traditions that endure. For almost a century, Elkay has been a family-owned and operated company, providing thousands of jobs that support our families and communities.



**Product Compliance:** ADA & ICC A117.1  
ASME A112.18.1/CSA B125.1  
NSF 61  
NSF 372 (lead free)

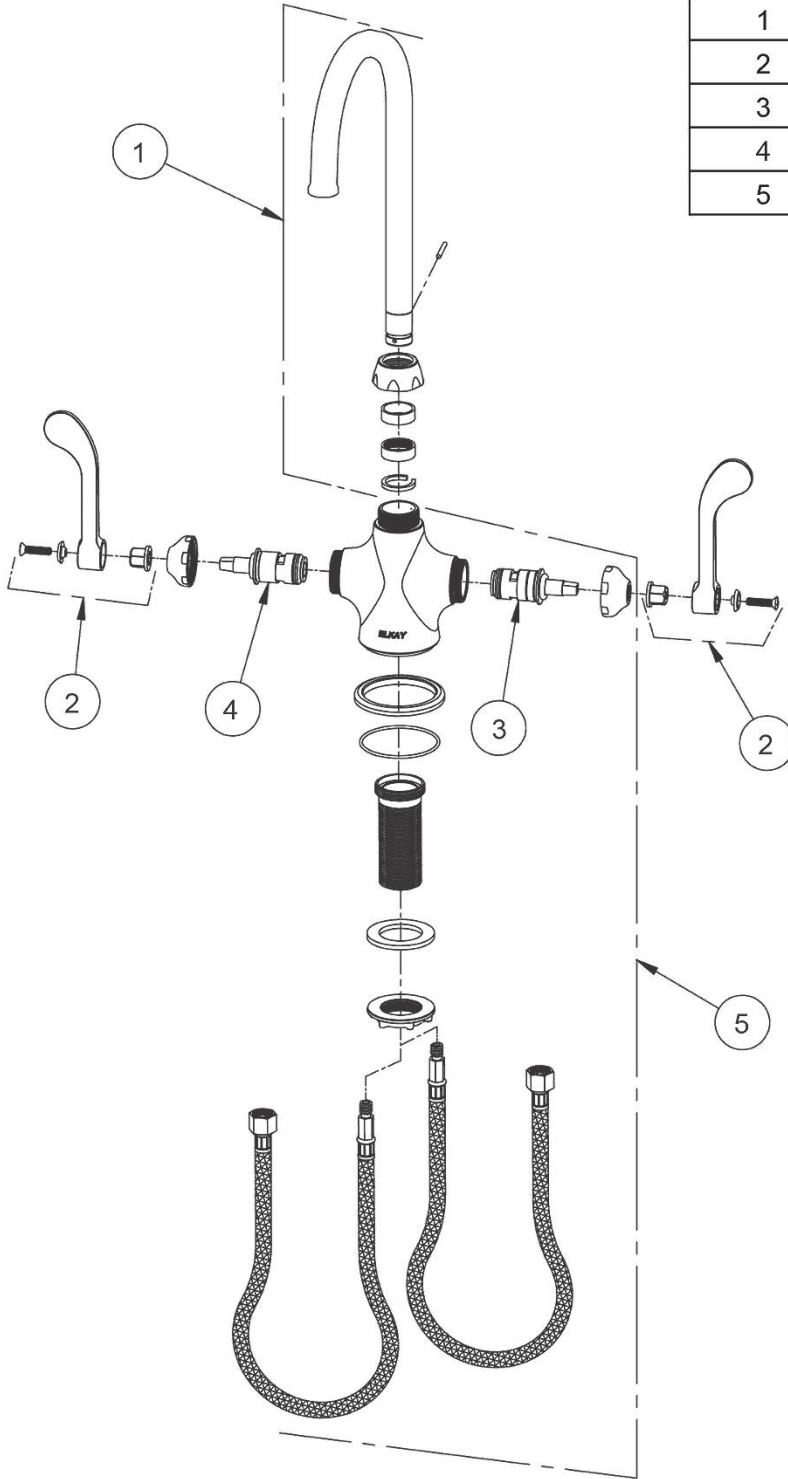
[Clean and Care Manual \(PDF\)](#)  
[Installation Instructions \(PDF\)](#)  
[Limited Warranty \(PDF\)](#)



PART: \_\_\_\_\_ QTY: \_\_\_\_\_  
PROJECT: \_\_\_\_\_  
CONTACT: \_\_\_\_\_  
DATE: \_\_\_\_\_  
NOTES: \_\_\_\_\_  
APPROVAL: \_\_\_\_\_

*In keeping with our policy of continuing product improvement, Elkay reserves the right to change product specifications without notice. Please visit [elkay.com](http://elkay.com) for the most current version of Elkay product specification sheets. This specification describes an Elkay product with design, quality, and functional benefits to the user. When making a comparison of other producers' offerings, be certain these features are not overlooked.*

| ITEM | IND. PART  | DESCRIPTION          |
|------|------------|----------------------|
| 1    | 1000002619 | Spout                |
| 2    | 45920C     | Handle, 6"           |
| 3    | 45923C     | Right Cold Cartridge |
| 4    | 45924C     | Left Hot Cartridge   |
| 5    | 45915C     | Body                 |



*In keeping with our policy of continuing product improvement, Elkay reserves the right to change product specifications without notice. Please visit [elkay.com](http://elkay.com) for the most current version of Elkay product specification sheets. This specification describes an Elkay product with design, quality, and functional benefits to the user. When making a comparison of other producers' offerings, be certain these features are not overlooked.*