

## PRODUCT SPECIFICATIONS

Elkay 8" Centerset Deck Mount Laminar Flow Faucet w/5"  
Gooseneck Spout 4" Wristblade Handles 1/2 Offset Inlets+Stop.  
Faucet has a flow rate of 1.5 GPM, and is made of Chrome Plated  
Brass material, with a Quarter Turn Ceramic Disc valve. Faucet  
requires 2 faucet holes.

|                            |   |
|----------------------------|---|
| <b>Mounting Type:</b>      | Wall Mount  |
| <b>Special Features:</b>   | Low Flow<br>Solid Brass Construction<br>Spout swing restriction pin<br>1/2" adjustable inlets with integral stops |
| <b>Finish:</b>             | Chrome (CR)   |
| <b>Handle Type:</b>        | 4" Wristblade Handle  |
| <b>Deck Clearance:</b>     | 7-3/8"  |
| <b>Spout Reach:</b>        | 5-1/8"  |
| <b>Spout Height:</b>       | 11"   |
| <b>Hole Drillings:</b>     | 2   |
| <b>Material:</b>           | Chrome Plated Brass   |
| <b>Valve Type:</b>         | Quarter Turn Ceramic Disc   |
| <b>Valve Connection:</b>   | ShutOff Valve 1/2" NPT FM Inlt  |
| <b>Flow Rate:</b>          | 1.5 GPM   |
| <b>Faucet Hole Spread:</b> | 8   |
| <b>Spout Type:</b>         | Gooseneck   |

**Special Note:** 1.5 GPM VR aerator installed with 2.2 and .5 GPM inserts included



Chrome  
(CR)



### Included with Product: Shut-off

AMERICAN PRIDE. A LIFETIME TRADITION.  
Like your family, the Elkay family has values and traditions that endure. For almost a century, Elkay has been a family-owned and operated company, providing thousands of jobs that support our families and communities.



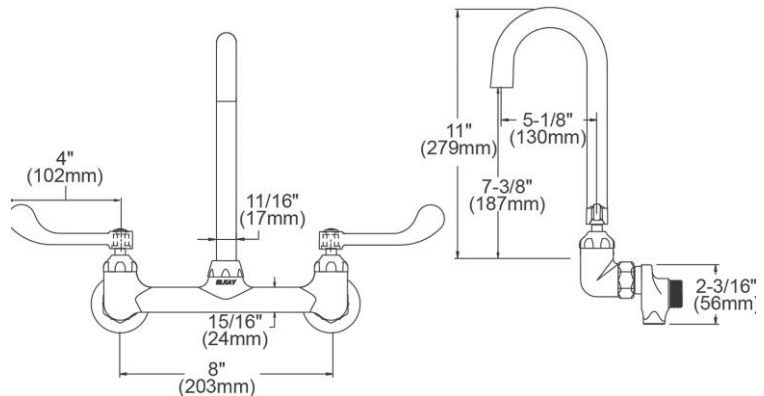
### Product Compliance:

ADA & ICC A117.1  
ASME A112.18.1/CSA B125.1  
NSF 61  
NSF 372 (lead free)

[Clean and Care Manual \(PDF\)](#)

[Installation Instructions \(PDF\)](#)

[Limited Warranty \(PDF\)](#)



PART: \_\_\_\_\_ QTY: \_\_\_\_\_

PROJECT: \_\_\_\_\_

CONTACT: \_\_\_\_\_

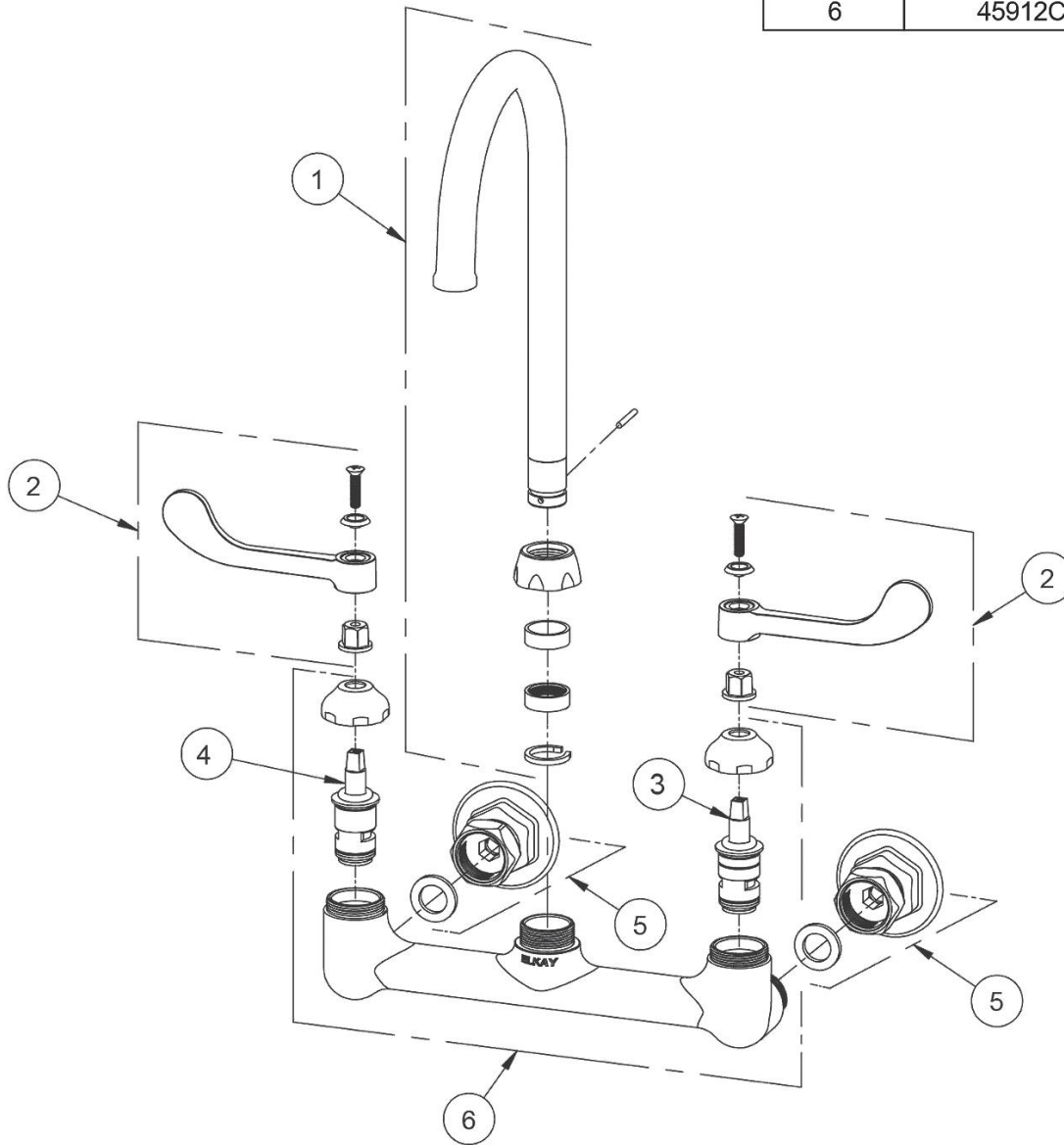
DATE: \_\_\_\_\_

NOTES: \_\_\_\_\_

APPROVAL: \_\_\_\_\_

*In keeping with our policy of continuing product improvement, Elkay reserves the right to change product specifications without notice. Please visit [elkay.com](http://elkay.com) for the most current version of Elkay product specification sheets. This specification describes an Elkay product with design, quality, and functional benefits to the user. When making a comparison of other producers' offerings, be certain these features are not overlooked.*

| ITEM | IND. PART  | DESCRIPTION           |
|------|------------|-----------------------|
| 1    | 1000002619 | Spout                 |
| 2    | 45919C     | Handle, 4"            |
| 3    | 45923C     | Right Cold Cartridge  |
| 4    | 45924C     | Left Hot Cartridge    |
| 5    | A55414     | 1/2" Adjustable Inlet |
| 6    | 45912C     | Body                  |



*In keeping with our policy of continuing product improvement, Elkay reserves the right to change product specifications without notice. Please visit [elkay.com](http://elkay.com) for the most current version of Elkay product specification sheets. This specification describes an Elkay product with design, quality, and functional benefits to the user. When making a comparison of other producers' offerings, be certain these features are not overlooked.*