



Garage Door Replacement Hardware





WHO WE ARE

Headquartered in Redlands, California, Prime-Line Products was established in 1978 as a supplier of Window and Door Replacement Hardware. What started as an initial offering of 300 parts, has now grown to an assortment of thousands of items in a variety of categories within the Home Improvement space.

Prime-Line's growth is enhanced by our proprietary regional assortment data that takes the guesswork out of a business as SKU intensive as replacement hardware and answers the question 'What sells where?' Our relentless focus on innovation, customer service, attention to detail and accurate order processing have been instrumental in developing Prime-Line's leading position in the market for more than 40 years.

Today, with an ever-expanding product mix, Prime-Line is recognized as North America's largest supplier of window and door replacement hardware and is a leader in the Maintenance, Repair and Operations (MRO) industry.

Time and time again, we're the go-to brand for retailers, wholesalers, commercial companies and individual homeowners because of the 'one-stop shop' experience our item selection and in-house expertise provides.

Without a doubt, we offer thousands of replacement hardware parts... including the one you need.

Modified: Jul 9, 2025

What makes us different:

- Largest selection of current and hard-to-find hardware plus adjacent categories
- Competitive wholesale pricing
- Proprietary market data that provides guidance for regional assortments
- In stock, ready to ship inventory
- Personalized account management and technical support

How we can help:

- Global sourcing and manufacturing
- Private labeling
- Single-item drop ship and large warehouse order fulfillment
- Nationwide shipping from a centralized location
- Full EDI integrations developed in-house
- In-house eCommerce, content creation and Creative Services

Have questions?

Our Customer Experience team is made up of industry veterans, they are true experts and are here to help. If you have questions, need a quote or want to place an order, send an email to customerservice@primeline.net or call 1-800-255-3505 Monday thru Friday 6am to 5pm PST.

For further information, please contact us directly:

1980 Orange Tree Lane, Suite 100
Redlands, CA 92374
800.255.3505
primelineparts.com

GARAGE DOOR

Hardware



Keeping the hardware on your garage door in good condition ensures a long lasting and trouble free operation. We supply a complete line of garage door replacement parts & accessories that most often need replacing. Over 100 items are available to keep your door operating smoothly.

Section Table of Contents

[How To Use The Catalog](#)

[Hinges](#)

[Bottom Seals](#)

[Latches](#)

[Brackets](#)

[Rollers](#)

[Cables](#)

[Stops](#)

[Extension Springs](#)

[Torsion Springs](#)

[Handles](#)

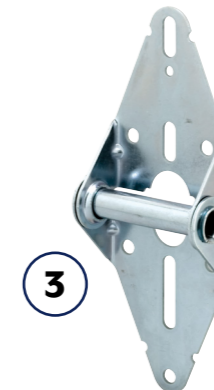
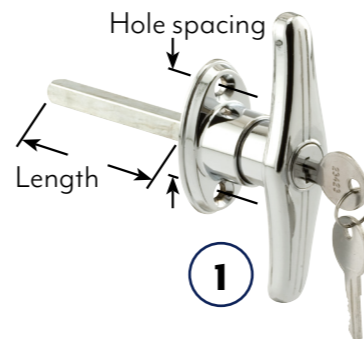


“Keeping the hardware on your garage door in good condition ensures long lasting and trouble free operation.”

Uses: There is a wide variety of door styles on the market and all require some type of hardware to function. Most of these hardware components wear out over time and require repair and replacement. It is important to have a properly functioning door for security and safety reasons.

Selection:

1. Review the handle for the spacing between the mounting holes and the shaft length.
2. Roller type, steel or plastic, and roller diameter are also important to ensure your door will operate properly.
3. Determine which hinge is needed by what position it mounts on the door. Bottom mount and center hinges are referred to as position #1.



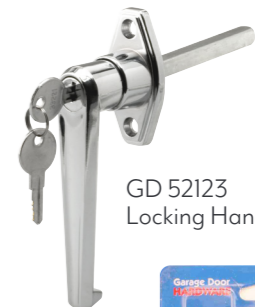
GD 52100
Extension Cable



GD 52108
Pulley with Strap



GD 52112
Roller



GD 52123
Locking Handle

Time required for installation: 1 to 2 hours for most replacements.

Tools required: Pliers or needle nose pliers, hammer, ratchet with various socket sizes.

Expected lifetime: Garage door hardware life can vary widely. Generally, if the item is properly installed, lubricated annually and cleaned, it will last for many years.

Why buy: Most purchases are the result of wear on hardware components or abuse, such as the door rollers failing. This can cause the rollers to freeze and grind on the track. It is important to have a properly functioning door for security and safety reasons.

Care and maintenance: Lubricate moving parts; including cable with a lightweight oil twice a year; do not use grease. Keep the track area clean of dirt and debris.



Get the most out of your interactive catalog



Qty: 1

Galvanized steel, 14 gauge, 3 in. overall width, roller tube accepts a standard 7/16 in. O.D. stem roller.

GD 52104 (# 1 position & center)

GD 52105 (# 2 position)

GD 52106 (# 3 position)

GD 52107 (# 4 position)

Clickable hyperlink launches internet browser, opening a new web page that redirects to the product page on the Prime-Line website.

Toggle between photo and dimensioned line drawing of product.

Additional product specifications.

The screenshot shows a web browser window displaying the product page for a garage door hinge. The browser address bar shows the URL: https://www.primelineparts.com/hinge-1-position-center/. The website header includes the Prime-Line logo, a search bar with 'GD 52104' entered, and links for 'ACCOUNT' and 'CART (0)'. A navigation menu lists 'REPAIR/REPLACEMENT PARTS', 'SAFETY AND SECURITY PRODUCTS', 'FASTENERS', 'CATALOGS', and 'PROJECTS'. The main content area features a large image of the hinge, a 'COMPARE' icon, and a 'Hinge (1# Position & Center)' title. Below the title is the SKU 'GD 52104' and a price of '\$11.00'. A list of product features is provided: 'Used by most garage door manufacturers', '14 ga. galvanized steel', and 'Easy to install'. An 'ADD TO CART' button is visible next to a quantity selector set to '1'. Below the main image is a 'PRODUCT DETAILS' section with a description: 'This is a heavy-duty 14 ga. galvanized steel hinge. The roller tube accepts a standard 7/16 in. diameter stem roller. Used by most garage door manufacturers. #1 position and center.' A 'SPECIFICATIONS' section follows, listing: 'Accepts 7/16 in. diameter stem roller' and 'Please refer to the line art drawing for dimensions and compare with your needs before purchasing'. A 'WARRANTIES & MANUALS' section is partially visible at the bottom. A 'Feedback' button is located on the right side of the page.

Descriptive title.

Product description.

Add to cart option

GARAGE DOOR

Cables, Stops & Accessories



Qty: 2
Galvanized carbon steel, 12 ft. length.
[GD 52100](#) (1/8 in. cable) [GD 52161](#) (5/32 in. cable)
[GD 52101](#) (3/32 in. cable)



Qty: 2 sets
Galvanized carbon steel, 8 ft. 8 in. length, 1/8 in. O.D., with cable clamps.
[GD 52102](#)



Qty: 2
Galvanized carbon steel, 8 ft. 8 in. length, with stops.
[GD 52183](#) (1/8 in. cable) [GD 52263](#) (3/32 in. cable)



Qty: 2
Galvanized carbon steel, 13 ft. 8 in. length, 1/8 in. O.D.
[GD 52262](#)



Qty: 2 sets.
Galvanized carbon steel, 12 ft. length, 3/32 in. O.D., with cable clamps and hooks.
[GD 52289](#)



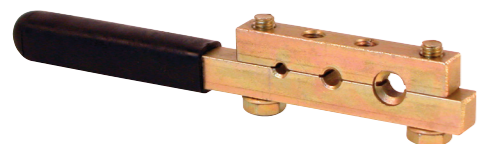
Qty: 2 sets.
Extruded aluminum.
[GD 12149](#) (1/16 in.) [GD 12152](#) (5/32 in.)
[GD 12150](#) (3/32 in.) [GD 12153](#) (3/16 in.)
[GD 12151](#) (1/8 in.) [GD 12154](#) (1/4 in.)



Qty: 20
Extruded aluminum.
[GD 12180](#) (1/4 in.)



Qty: 2
Steel bolt and nut, cast aluminum housing.
[GD 12251](#) (1/16 in.) [GD 12253](#) (3/8 in.)
[GD 12252](#) (5/16 in.) [GD 12254](#) (1/2 in.)



Qty: 1
Steel, 2 piece, rubber covered handle.
[GD 52215](#) (1/16 in. - 1/8 in.)



Qty: 1
Steel, 2 piece, rubber covered handle.
[GD 52216](#) (1/8 in. - 1/4 in.)



Galvanized steel pulley and strap, case hardened steel race with steel ball bearing roller, center grooved.

- [GD 52109](#) (3 in. O.D. – Qty. 1 set)
- [GD 52189](#) (3 in. O.D. – Qty. 2 sets)
- [GD 52108](#) (4 in. O.D. – Qty. 1 set)



Qty: 2
Steel ball bearing roller, steel inner race, 1-7/8 in. O.D., round edge, 7/16 in. O.D. stem, 3-7/8 in. stem length.

[GD 52110](#)



Heavy duty steel ball bearing roller, steel inner race, round edge, 7/16 in. O.D. stem.

- [GD 52212](#) (4-3/8 in. stem length – Qty. 2)
- [GD 52111](#) (6-13/16 in. stem length – Qty. 1)



Qty: 2
Plastic ball bearing roller, steel inner race, 1-7/8 in. O.D., round edge, 7/16 in. O.D. stem, 4-1/4 in. stem length.

[GD 52140](#)



Qty: 2
Plastic roller, 1-7/8 in. O.D., round edge, 7/16 in. O.D. stem, 4-1/8 in. stem length.

[GD 52203](#)



Qty: 2
Steel ball bearing roller, steel inner race, 1-5/16 in. O.D., flat edge, 5/16 in. O.D. stem, 2-7/8 in. stem length.

[GD 52112](#)



Qty: 2
Steel ball bearing roller, steel inner race, 1-7/8 in. O.D., round edge, 5/16 in. O.D. stem, 4-1/2 in. stem length.

[GD 52113](#)



Qty: 1, with fasteners.
Galvanized steel, 14 gauge, 3 in. overall width, roller tube accepts a standard 7/16 in. O.D. stem roller.

- [GD 52104](#) (#1 position & center - Qty: 1, with fasteners)
- [GD 52105](#) (#2 position - Qty: 1, with fasteners)
- [GD 52106](#) (#3 position - Qty: 1, with fasteners)
- [GD 52107](#) (#4 position - Qty: 1, with fasteners)
- [GD 52188](#) (#4 position - Qty: 2, without fasteners)



Qty: 1
Galvanized steel, heavy duty.

[GD 52167](#)



Qty: 1, with fasteners.
Galvanized steel, heavy duty, adjustable, roller tube accepts a standard 7/16 in. O.D. stem roller.

[GD 52117](#)



Qty: 1 set, with fasteners.
Steel, adjustable.

GD 52220



Qty: 1 set.
Galvanized steel, heavy duty, 13 gauge, roller tube accepts a standard 7/16 in. O.D. stem roller.

GD 52197



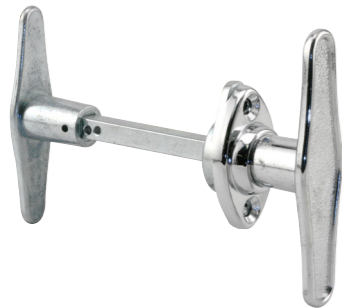
Diecast, keyed, 1-1/2 in. hole spacing, 5/16 in. square shaft, 3 in. long.

GD 52122 (Chrome – Qty. 1 handle, 2 keys, with fasteners)
GD 52200 (Chrome – Qty. 2 handles, 4 keys, with fasteners)



Qty: 1 handle, 2 keys, with fasteners.
Diecast, keyed, 1-1/2 in. hole spacing, 5/16 in. square shaft, 4-5/8 in. long.

GD 52169 (Chrome)



Qty: 1, with fasteners.
Diecast, 1-1/2 in. hole spacing, 5/16 in. square shaft, 3 in. long.

GD 52121 (Chrome)



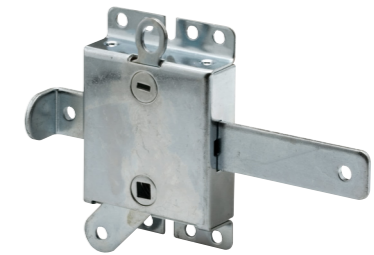
Qty: 1 handle, 2 keys, with fasteners.
Diecast, keyed with break-off spindle, 4-1/4 in. hole spacing, 5/16 in. square shaft, 3-1/8 in. long.

GD 52147 (Chrome)



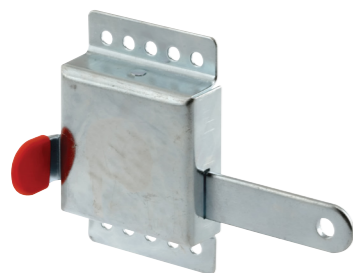
Qty: 1 handle, 2 keys, with fasteners.
Diecast, keyed, 1-3/4 in. hole spacing, 5/16 in. square shaft, 3 in. long.

GD 52123 (Chrome)



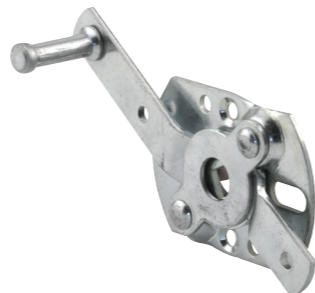
Qty: 1
Galvanized steel assembly, steel bolt, heavy duty, spring loaded.

GD 52138



Qty: 1, with fasteners.
Galvanized steel assembly, steel bolt, heavy duty.

GD 52118



Qty: 1, with fasteners.
Galvanized steel, heavy duty, accepts a 5/16 in. square shaft.

GD 52120



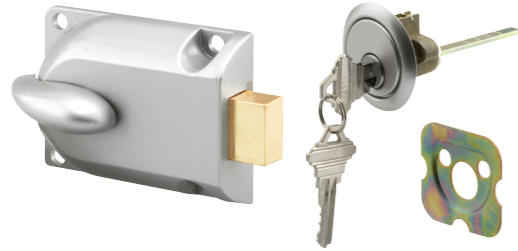
Qty: 1 set, with fasteners.
Heavy gauge steel, tamper-proof cover plate, with surface & mortise keepers.

GD 52241



Qty: 1 set, with fasteners.
Heavy gauge steel, with surface mounted keeper.

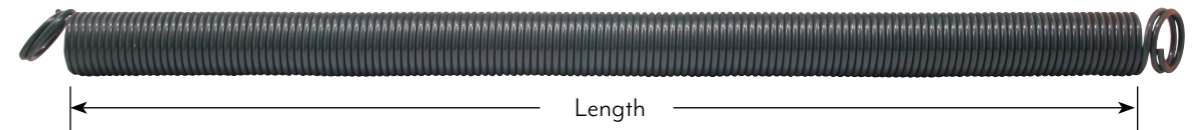
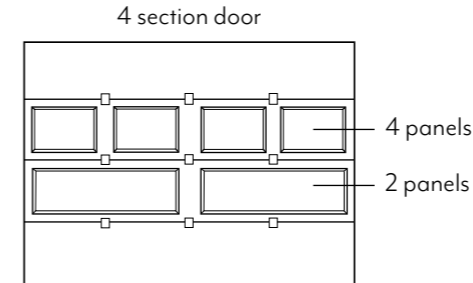
GD 52145



Qty: 1 set, 2 keys, with fasteners.
Diecast assembly, heavy duty steel spring bolt, aluminum face key cylinder, 5 pin tumbler.
[GD 52119](#) (Aluminum)



Qty: 1 lock, 2 keys, with fasteners.
Diecast, brass face, 5 pin tumbler.
[GD 52139](#)



Qty: 1 (CCGD 4 per box).
Heavy duty, rated at 10,000 cycles, galvanized carbon steel cable, 8 ft. 8 in. length, 1/8 in. O.D.



Qty: 1 lock, 2 keys, with fasteners.
Plastic housing and faceplate, exterior mounted.
[GD 52142](#)



Qty: 1 lock, 2 keys, with fasteners.
Diecast, 36 in. cable.
[GD 52143](#) (Brushed chrome)



Qty: 1 set.
Double loop, 16 in. length, galvanized carbon steel cable, with cable clamps.
[GD 12270](#)

[GD 12279](#)

[GD 12202](#)

[GD 12311](#)

[GD 12191](#)

[GD 12277](#)

[GD 12192](#)

[GD 12193](#)

[GD 12194](#)

[GD 12195](#)

[GD 12207](#)

[GD 12205-1](#)

[CCGD 12205](#)

[GD 12267](#)

Spring Size	Color Code	Door Size	Springs On Door	Springs On Each Side
50 lbs. / 25 in. long	Orange	Use on single car fiberglass doors	2	1
70 lbs. / 25 in. long	Yellow	Use on single car fiberglass door	2	1
90 lbs. / 25 in. long	Light Blue	Use on 2 car metal doors	2	1
110 lbs. / 25 in. long	Blue	Wood door, 8 ft. wide x up to 6 ft. 6 in. high; 2 panels; 4 sections Fiberglass door, 16 ft. wide x up to 7 ft. high; 4 sections	2	1
110 lbs. / 29 in. long	Blue	Use on Taylor® doors; for 2 car metal doors	2	1
120 lbs. / 25 in. long	Green	Wood door, 8 ft. wide x up to 7 ft. high; 2 panels; 4 sections Fiberglass door, 16 ft. wide x up to 7 ft. high; 4 sections	2	1
130 lbs. / 25 in. long	Black	Wood door, 8 ft. wide x up to 7 ft. high; 4 panels; 4 sections	2	1
140 lbs. / 25 in. long	Red	Wood door, 9 ft. wide x up to 7 ft. high; 2 panels; 4 sections Wood door, 16 ft. wide x up to 7 ft. high; 2 panels; 4 sections	2 4	1 2
150 lbs. / 25 in. long	Silver	Wood Door, 9 ft. Wide x up to 7 ft. High; 4 Panels; 4 Sections Wood Door, 16 ft. Wide x up to 7 ft. High; 4 Panels; 4 Sections	2 4	1 2
150 lbs. / 22 in. long	Silver	9 ft. wide x up to 7 ft. high; 4 panels; 4 sections 16 ft. wide x up to 7 ft. high; 4 panels; 4 sections	2 4	1 2
160 lbs. / 25 in. long	Brown	Wood door, 9 ft. wide x 7 ft. high; 4 panels; 4 sections Wood door, 16 ft. wide x 7 ft. high; 4 panels; 4 sections	2 4	1 2
160 lbs. / 25 in. long	Brown	Wood door, 9 ft. wide x 7 ft. high; 4 panels; 4 sections Wood door, 16 ft. wide x 7 ft. high; 4 panels; 4 sections	2 4	1 2
170 lbs. / 25 in. long	Yellow	Wood Door, 10 ft. wide x up to 7 ft. high; 4 panels; 4 sections Wood Door, 16 ft. wide x up to 7 ft. high; 8 panels; 4 sections	2 4	1 2

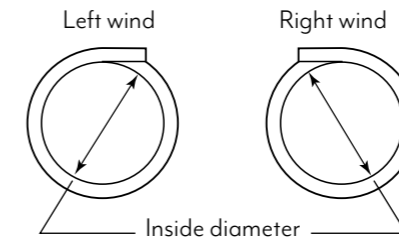
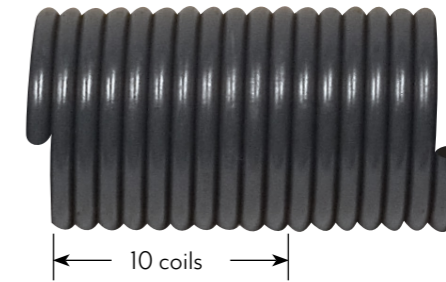
Qty: 1

Steel, heavy duty, with winding and anchor cone.

	Color Code	Wire Size	Inside Diameter	Overall Length	Wind
GD 12224	Silver	.207	1-3/4 in.	18 in.	Right
GD 12225	Silver	.207	1-3/4 in.	18 in.	Left
GD 12315	Light Green	.207	2 in.	20 in.	Right
GD 12316	Light Green	.207	2 in.	20 in.	Left
GD 12317	Tan	.207	2 in.	22 in.	Right
GD 12226	Blue	.218	1-3/4 in.	20 in.	Right
GD 12227	Blue	.218	1-3/4 in.	20 in.	Left
GD 12319	Light Blue	.218	2 in.	23 in.	Right
GD 12320	Light Blue	.218	2 in.	23 in.	Left
GD 12308	Orange	.218	2 in.	25 in.	Right
GD 12228	Red	.243	1-3/4 in.	32 in.	Right
GD 12229	Red	.243	1-3/4 in.	32 in.	Left
GD 12232	Yellow	.243	2 in.	32 in.	Right
GD 12233	Yellow	.243	2 in.	32 in.	Left
GD 12230	White	.250	1-3/4 in.	32 in.	Right
GD 12231	White	.250	1-3/4 in.	32 in.	Left
GD 12321	Gold	.250	2 in.	28 in.	Right
GD 12322	Gold	.250	2 in.	28 in.	Left
GD 12234	Green	.250	2 in.	32 in.	Right
GD 12235	Green	.250	2 in.	32 in.	Left

Measure 10 coils and refer to chart for wire size.

Wire Chart	Wire Size
	2-1/16 in. = .207
	2-3/16 in. = .218
	2-7/16 in. = .243
	2-1/2 in. = .250



Left hand shown

Qty: 1

Diecast, accepts cables up to 1/8 in. O.D., max weight load of 265 lbs.

[GD 12222](#) (Left hand) [GD 12223](#) (Right hand)



Qty: 2

Hard drawn wire, 1/2 in. O.D. x 16 in. long.

[GD 52238](#)

GARAGE DOOR

Accessories & Bottom Seals



Qty: 1
Vinyl, fits on fiberglass and metal doors.
[GD 12294](#) (16 ft.)



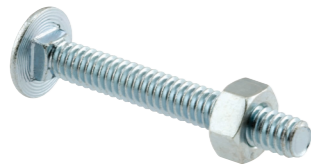
Vinyl, fits on fiberglass and metal doors.
[CCGD 12127](#) (9 ft. – Qty. 6 in cut case box)
[CCGD 12128](#) (16 ft. – Qty. 6 in cut case box)



Qty: 1, with fasteners.
Bright yellow rubber ball, 21 ft. nylon cord, contacts windshield when parking car in garage.
[GD 52286](#)



Qty: 2, with fasteners.
Galvanized steel.
[GD 52129](#) (5 in. hole spacing) [GD 52130](#) (6 in. hole spacing)



Qty: 12, with nuts.
Zinc plated, 1/4 in.-20 x 1-7/8 in.
[GD 52103](#)